

50X1

3. Leningrad — May 19, 1956
Statue of Ivan the Terrible
From Hotel window

4 " — Gov't Building

9 " UD street — afternoon

10 " UD PARK

11 " Street cleaner.

12 " UD Factory — nr a church.

13 " Apts at L ; Church, b'g now a

25 " Bldg UC ~ woman workers MUSEUM.

32 " Market square

35 " Interior of market square building
— selling cranberries.

37 " Market square.

38 " " Meat counter.

44 " Book store — unexpensive

48 " St. ISSACS under repair.

52 " Subway station

65 IL-12 — Leningrad to Moscow

cigarette smoking allowed. 21 passenger
non-pressurized.

VNUKOV0

66. Landing at VNUKOV0 Airport - mid May.

68 Plane like DC-3.

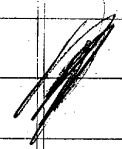
72 Moscow - UD street

73 " - State museum.

90 " - GUM

Government
Universal
Magazine

~~Bell~~ - 197 tons
in Kremlin



110 " Apts in left sq.

113 " VNUKOV0 Airport IL 12's & 14's

114 " " " MIG

115 Stalingrad IL-12 at airport ^{Moscow Station} by air 3 1/2 hrs
20-30 May.

134 " Head Doctor at a hospital with
cancer.

135 " Truce for changing street lights

142 " City on Volga R. - Deck
when a boat left on 2 1/2 day trip
to Rostov - on the Volga-Don Canal.

152 On River boat bet Stalingrad & Rostov -
Service men & Child.

later May -

158 Rostov - Entrance to Cart House

Woman judges.

161 " Opera house DC

162 " Apts DC in bg.
st. car tracks in fg.

163 " Home - estimated cost \$15,000.

169 " Factory - said to mfg violins.

172 " Airport ~~there~~

173 " leaving " 1-2 (DC-3 type)

175 Flight of Dnieper R valley
probably near Dnepropetrovsk

176 "

177 Dnepropetrovsk - Airport
Grass & Dirt runway

178 Flying over Dnieper R.
Between Stalino & Dnepropetrovsk.
Near approach to Dnieper.

179 Dnepropetrovsk - Airport
MiG's leaving.
Dirt runway.

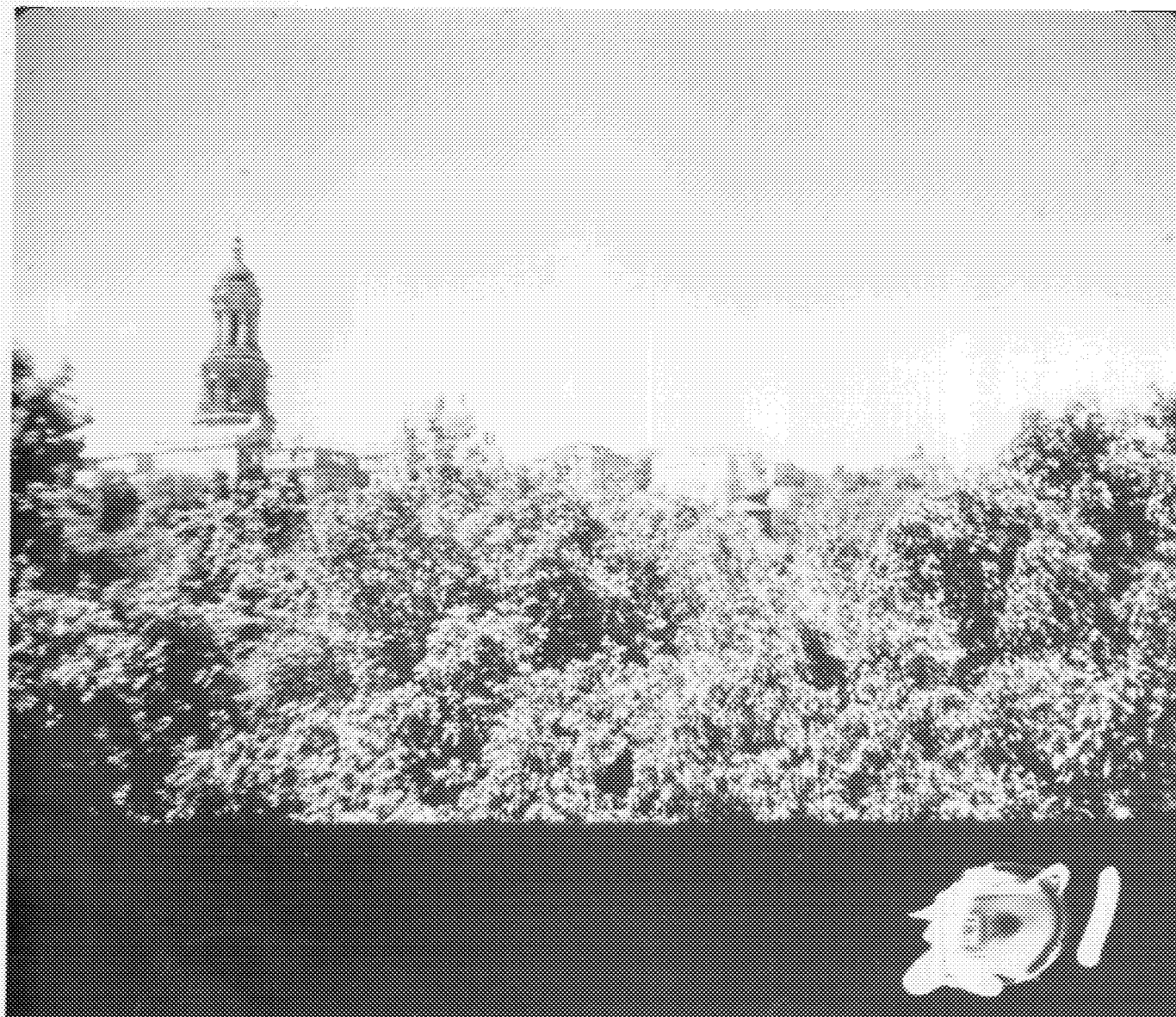
181 " ——— leaving — able MiG's } trunks along runway with

182 "

- 184 - Univ. of Kiev.
- 188 - Kiev - Kreschatie
Apt. - Post Office +
Office Bldg in bldg
- 193 - Radio + TV store -
- 194 - Entrance to large Dept Store -
Kiev.
- 195 - Kiev - Pajama counter at
Large dept store.
- 198 - " - Dept Store -
Pocketbook counter
- 199 - " - " " Perfume stand
- 200 - " " " " "Kapm" synthetic
steering.
- 201 " " " " TV sets -
- 202 " " " " Selling a washing
machine
- 203 " " " " Pots + pans.
- 204 " " " " Material Counter
- 205 " " " " Neckties.
- 206 " " " " Keichref + milk rack
- 207 " " " " Baby carriages
- 208 " " " " Material counter
- 209 " Industrial Office in Hotel
Typical counting machine
- 210 " Two new buildings
- 211 " TV antenna - Mr Kreschatie

212	Just off Kreschatik — Many little shops with clove.
214	Kiev —
218	" Kreschatik — toward end of s
221	Monastery near Kiev — "LAURA"
222	" " "
224	" " "
227	" " " Tomb in the catacombs.
231	" " " in the catacombs
233	" " "
238	Boat ride on Dnieper R. from Kiev
241	" " " " — a stop north of Kiev. Sign for boat stop
242	on Dnieper — approaching Kiev
243	Kiev — Dnieper on left
251	Beach area on Dnieper — on East side — rather south of
257	Kiev — ice cream parlor. Kiev.
269	Leaving Kiev by air.
270	From air enroute from Kiev to Lvov.
271	LVOV — airport
272	" " Helicopters Hangar in by cc. — to right of Airport Terminal

273 - Lvov - airstrip at Lvov Airfield
Just one runway.



17A USSR - N. EUROPEAN RSFSR Leningrad Oblast Leningrad
59 59 N 30 15 E STATUE OF IVAN THE TERRIBLE FROM A HOTEL
WINDOW. 19 MAY 1956. OFFICIAL USE ONLY CIA 240715



17N USSR N. EUROPEAN RSFSR LENINGRAD OBLAST LENINGRAD
59 55 N 30 15 E A GOVERNMENT BUILDING. 19 MAY 1956.
OFFICIAL USE ONLY CIA 280717



17N USSR N. EUROPEAN RSFSR LENINGRAD OBLAST LENINGRAD
59 55 N 30 15 E
19 MAY 1956.

NOTE: LACK OF ACTIVITY IN AFTERNOON.
OFFICIAL USE ONLY

CIA 210716



9



17N USSR N. EUROPEAN RSFSR Leningrad Oblast Leningrad
52 55 N 30 15 E WOMAN STREET CLEANER AT WORK.
19 May 1956. OFFICIAL USE ONLY

CIA 240713



17N USSR N. EUROPEAN RSFSR Leningrad Oblast Leningrad
59 55 N 30 15 E SMALL UNIDENTIFIED FACTORY. 19 MAY 1956.
OFFICIAL USE ONLY CIA 240712



12

17N USSR N. EUROPEAN RSFSR LENINGRAD OBLAST LENINGRAD
59 55 N 30 15 E BUILDING AT LEFT IS AN APARTMENT. CHURCH
IN BACKGROUND IS NOW A MUSEUM. NOTE EMPTY STREET. 19 MAY 1956.
OFFICIAL USE ONLY CIA 240711



13

17N USSR N. EUROPEAN RSFSR Leningrad Oblast Leningrad
59 55 N 30 15 E BUILDINGS IN MARKET SQUARE, 19 May 1956.
OFFICIAL USE ONLY

CIA 240711

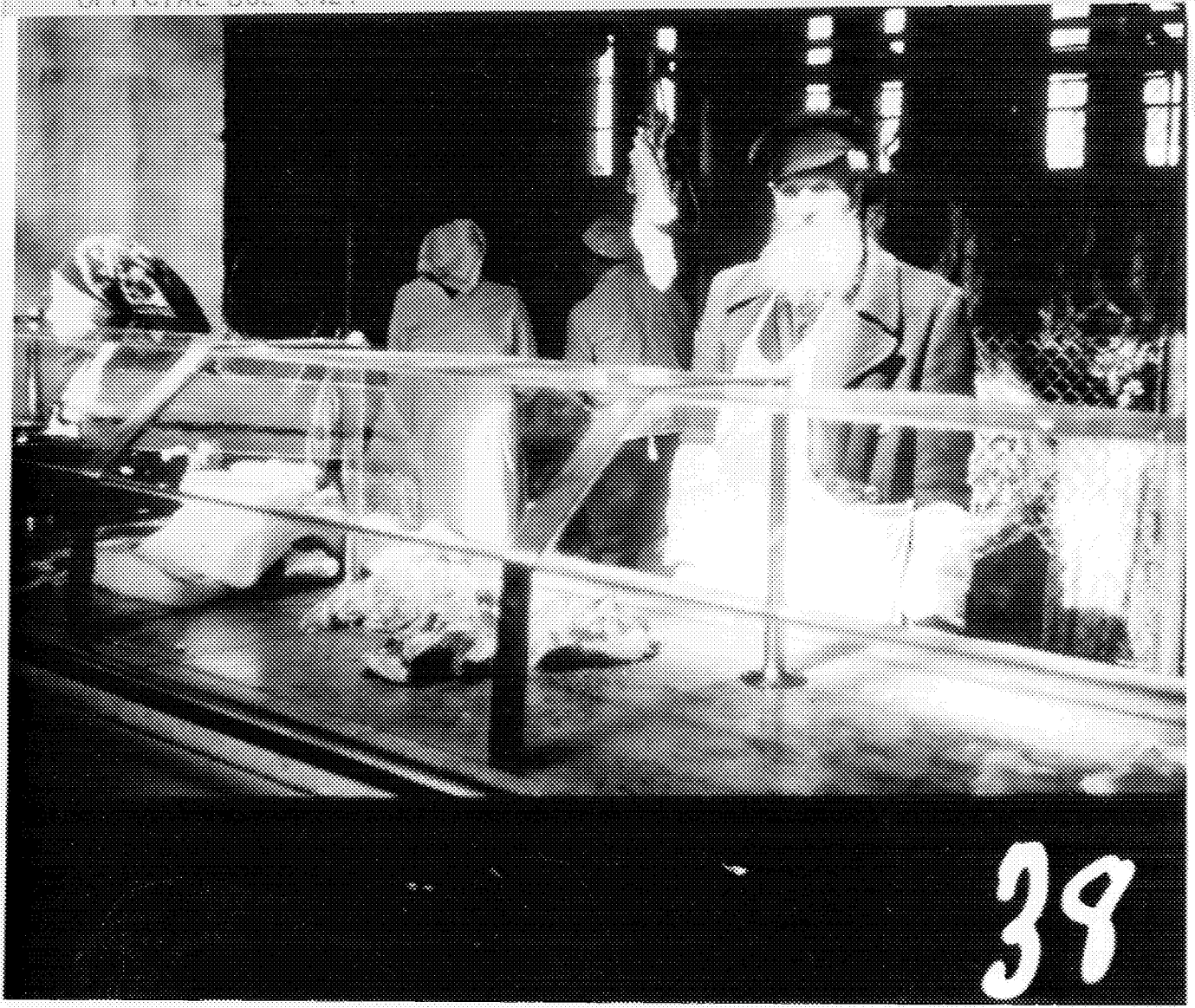


32





17N USSR, N. EUROPEAN RSFSR Leningrad Oblast Leningrad
59 55 N 30 15 E A MEAT COUNTER AT THE MARKET. 19 May 1956.
OFFICIAL USE ONLY CIA 210710



39



N. USSR

INTERIOR OF IL-12. MAY 1956.

OFFICIAL USE ONLY

CIA 240709





27N USSR N. EUROPEAN RSFSR MOSCOW OBLAST MOSCOW 55 45 N
37 35 E VNUKOVO AIRPORT. MAY 1956.
OFFICIAL USE ONLY

CIA 240708

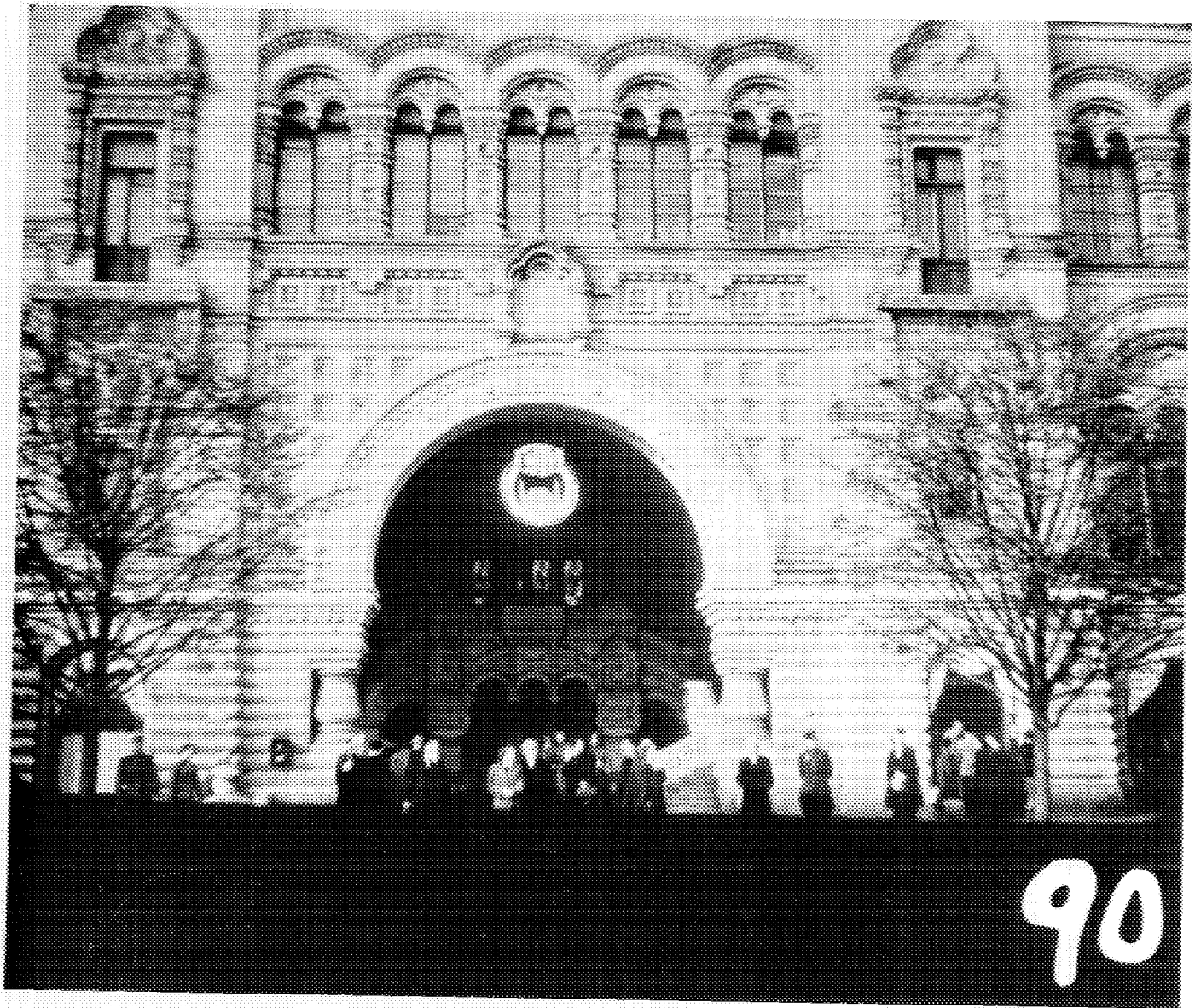


68

27N USSR N. EUROPEAN RSFSR MOSCOW OBLAST MOSCOW 55 45 N
37 35 E MAY 1956. OFFICIAL USE ONLY CIA 240707







ON USSR S. EUROPEAN RSFSR
ON RIVER BOAT BETWEEN STALINGRAD AND ROSTOV, MAY 1956.
OFFICIAL USE ONLY

CIA 240702



152



27N USSR N. EUROPEAN RSFSR MOSCOW OBLAST MOSCOW 55 15 N
37 35 E COMMERCIAL AIRPLANES AT VNUKOVO AIRPORT. MAY 1956.
OFFICIAL USE ONLY CIA 210706



113

27N USSR N. EUROPEAN RSFSR MOSCOW OBLAST MOSCOW 55 25 N
37 35 E CIVIL AND MILITARY AIRCRAFT AT VNUKOVO AIRFIELD.
NOTE: MIG. MAY 1956. OFFICIAL USE ONLY CIA 210705



114

25N USSR S. EUROPEAN RSFSR STALINGRAD OBLAST STALINGRAD
48 25 N 44 25 E COMMERCIAL PLANE IL-12 AT AIRPORT.
May 1956. OFFICIAL USE ONLY CIA 210708



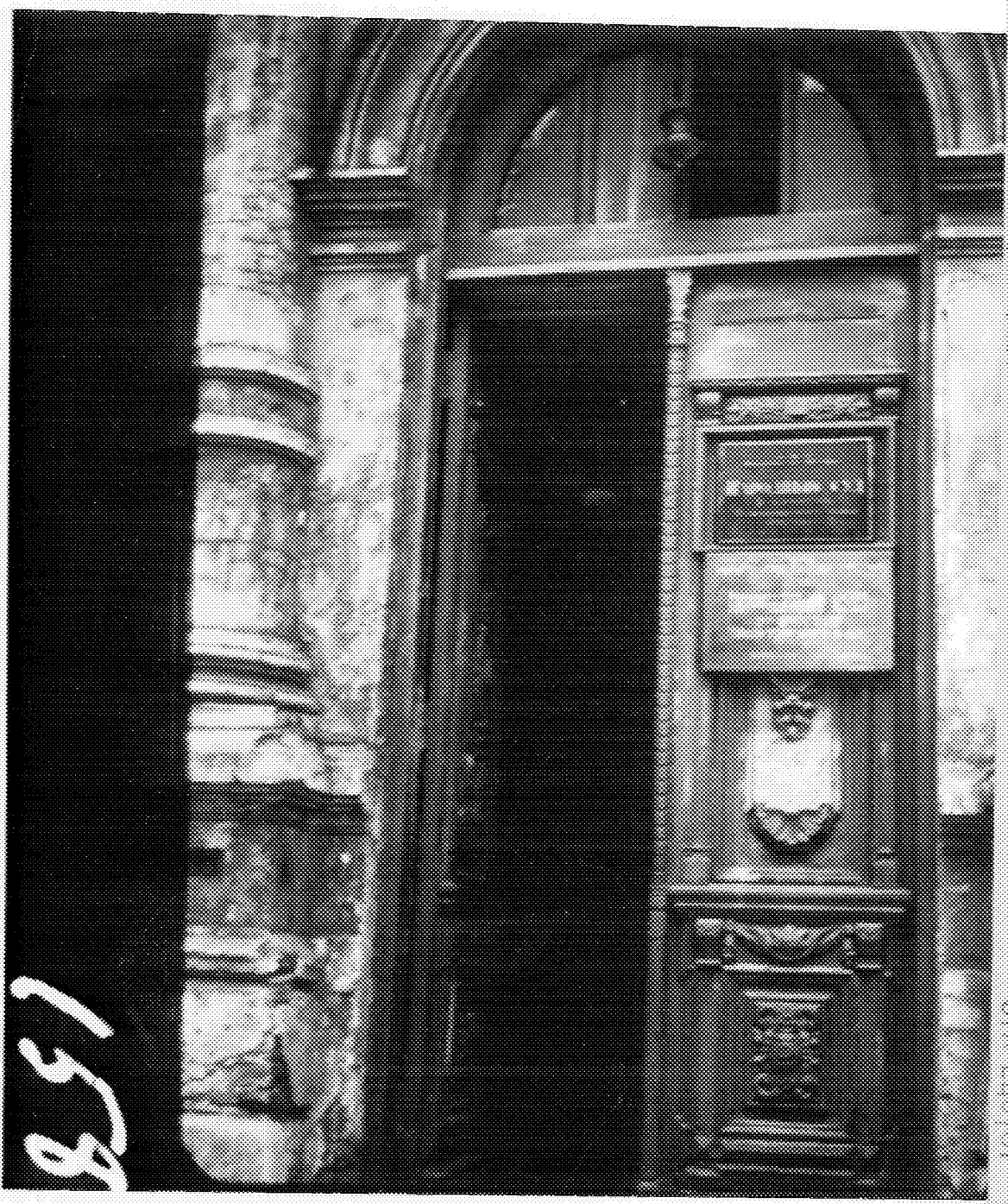


23N USSR S. EUROPEAN RSFSR STALINGRAD OBLAST STALINGRAD
N 15 N W 25 E CITY FROM RIVER BOAT. MAY 1956.
OFFICIAL USE ONLY

CIA 240703



142



158

23N USSR S. EUROPEAN ROSTOV OBLAST ROSTOV ON DON
47 15 N 39 53 E ENTRANCE TO A COURTHOUSE, MAY 1956.
OFFICIAL USE ONLY
CIA 210701



ZON USSR S. EUROPEAN RSFSR ROSTOV OBLAST ROSTOV ON DON
47 15 N 39 53 E APARTMENT BUILDINGS UNDER CONSTRUCTION.
MAY 1956. OFFICIAL USE ONLY CIA 240700



162

28N USSR - S. EUROPEAN RSFSR ROSTOV OBLAST ROSTOV ON DON
47 15 N 39 53 E PRIVATE HOME, ESTIMATED COST IS \$15,000.
MAY 1956. OFFICIAL USE ONLY CIA 210609



163

25N USSR S. EUROPEAN RSFSR ROSTOV OBLAST ROSTOV ON DON
47 15 N 39 53 E A FACTORY SAID TO BE MAKING VIOLINS.
MAY 1956. OFFICIAL USE ONLY CIA 2110698



169

ZON USSR S. EUROPEAN RSFSR ROSTOV OBLAST ROSTOV ON DON
47 15 N 39 53 E 2 PLANES AT AIRPORT. LI-2. MAY 1956.
OFFICIAL USE ONLY CIA 240697



172

20N USSR - S. EUROPEAN RSFSR ROSTOV OBLAST ROSTOV ON DON
47 15 N 39 53 E DURING TAKEOFF FROM AIRPORT. MAY 1956.
OFFICIAL USE ONLY CIA 240696



173

4N USSR UKRAINIAN SSR DNEPROPETROVSK (PROB.) 48 27 N 34 59 E
COAL PILES IN BACKGROUND, MAY 1956.
OFFICIAL USE ONLY

CIA 240695



175

IN USSR UKRAINIAN SSR DNEPROPETROVSK (PROB.) 48 27 N 34 59 E
COAL PILES IN BACKGROUND. MAY 1956.
OFFICIAL USE ONLY

CIA 210694

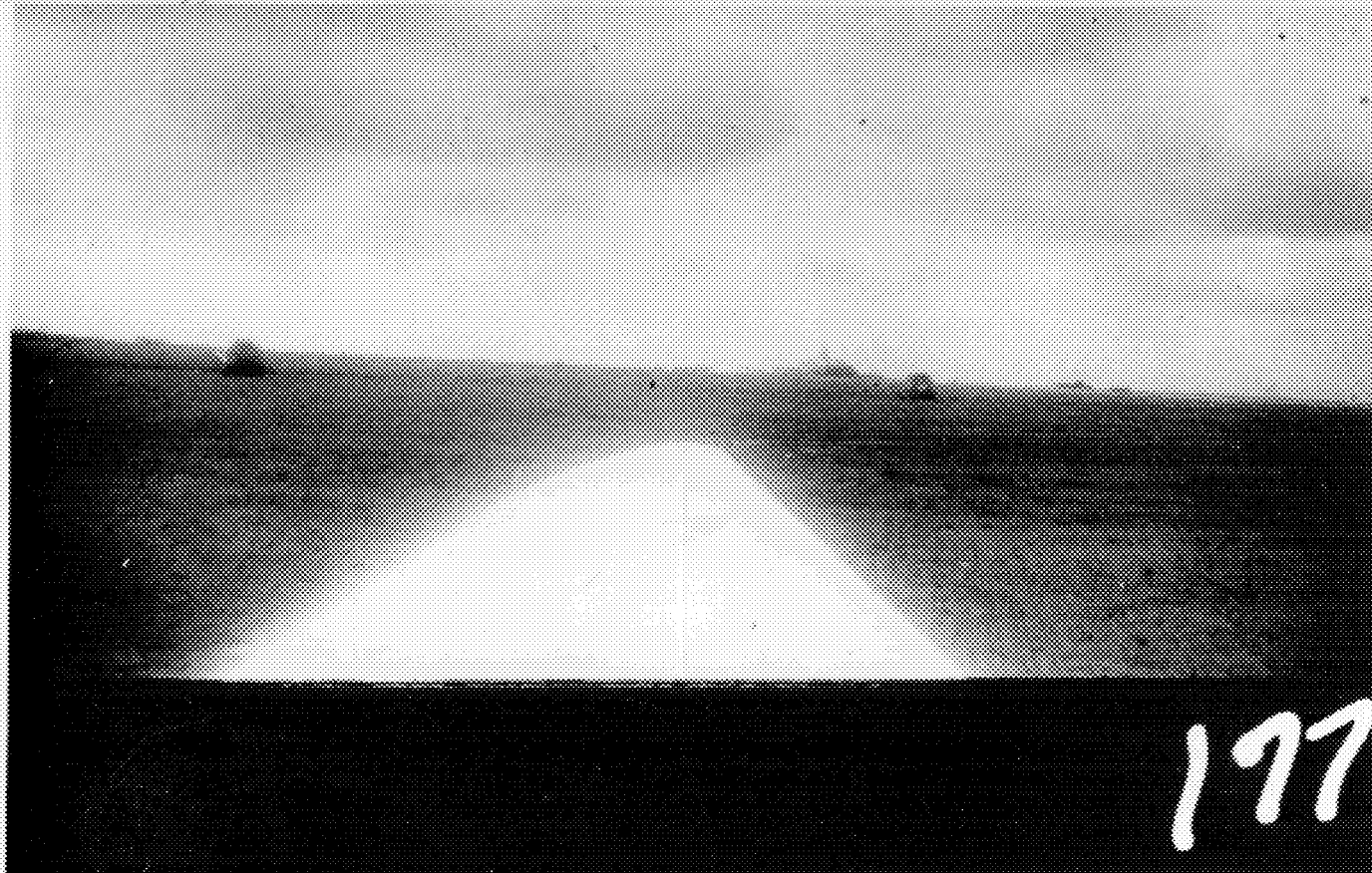


176

4N USSR UKRAINIAN SSR DNEPROPETROVSK 48 27 N 34 59 E
FROM PLANE LANDING AT AIRPORT. RUNWAY IS GRASS AND DIRT.
MAY 1956.

OFFICIAL USE ONLY

CIA 240693



177

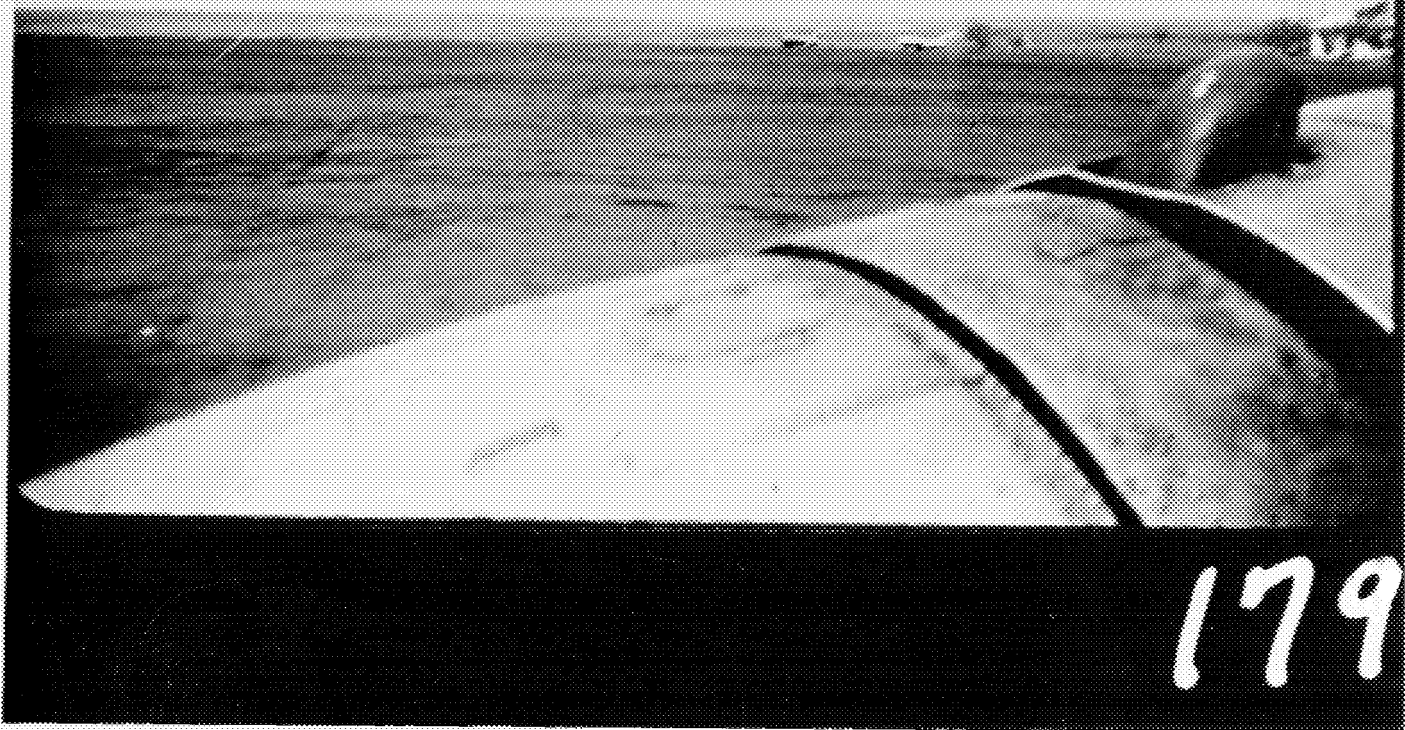
IN USSR, UKRAINIAN SSR, DNEPROPETROVSK (NR) 48 27 N 34 59 E
FROM PLANE OVER DNIEPER-RIVER, MAY 1956.
OFFICIAL USE ONLY

CIA 240692



IN USSR UKRAINIAN SSR ONEPROPETROVSK 48 27 N 34 59 E
FROM PLANE AT AIRPORT. MIGs IN BACKGROUND. MAY 1956.
OFFICIAL USE ONLY

CIA 240691



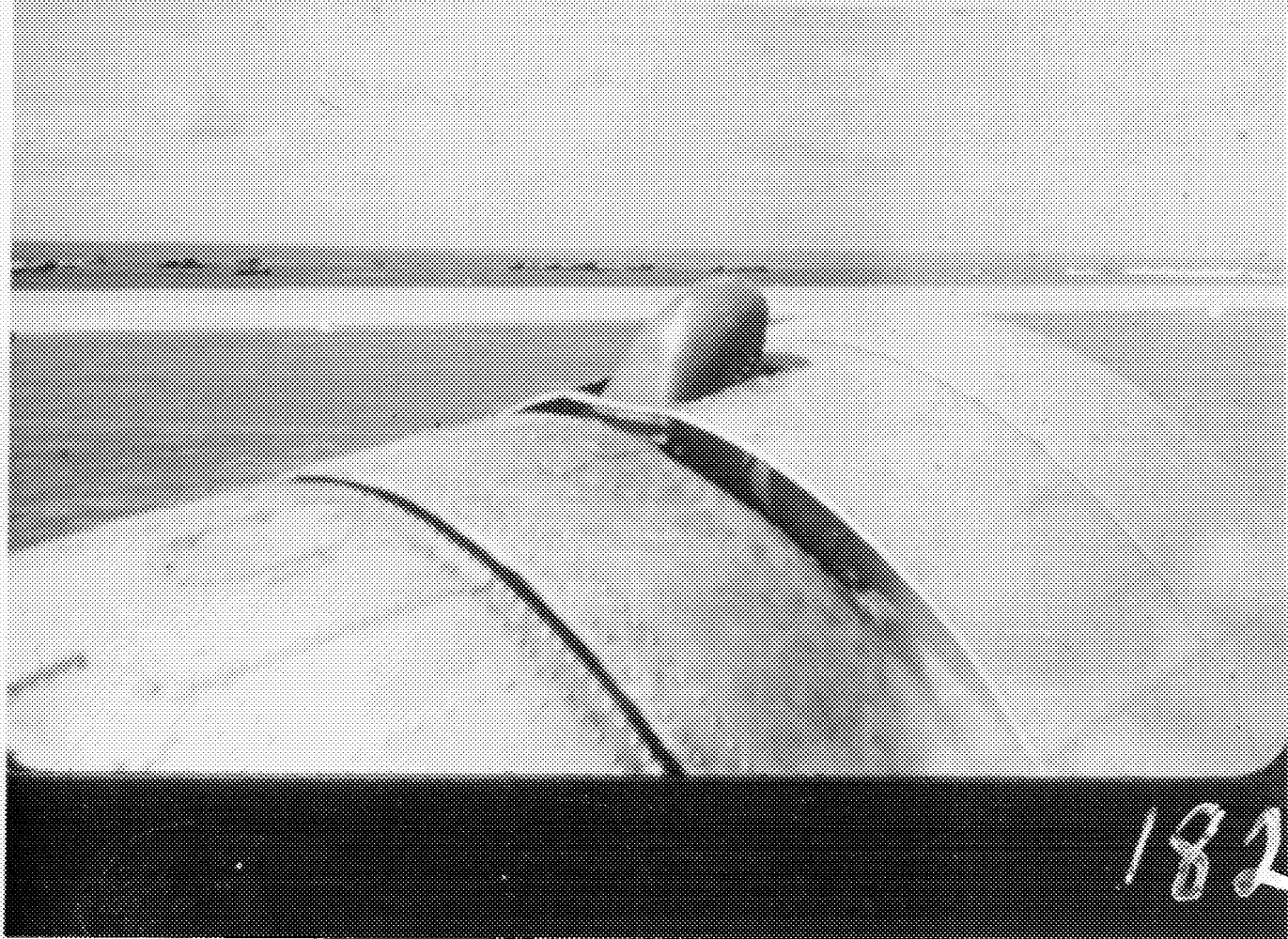
179

IN USSR - UKRAINIAN SSR DNEPROPETROVSK 49 27 N 34 59 E
FROM PLANE AT AIRPORT. MAY 1956. OFFICIAL USE ONLY CIA 280690

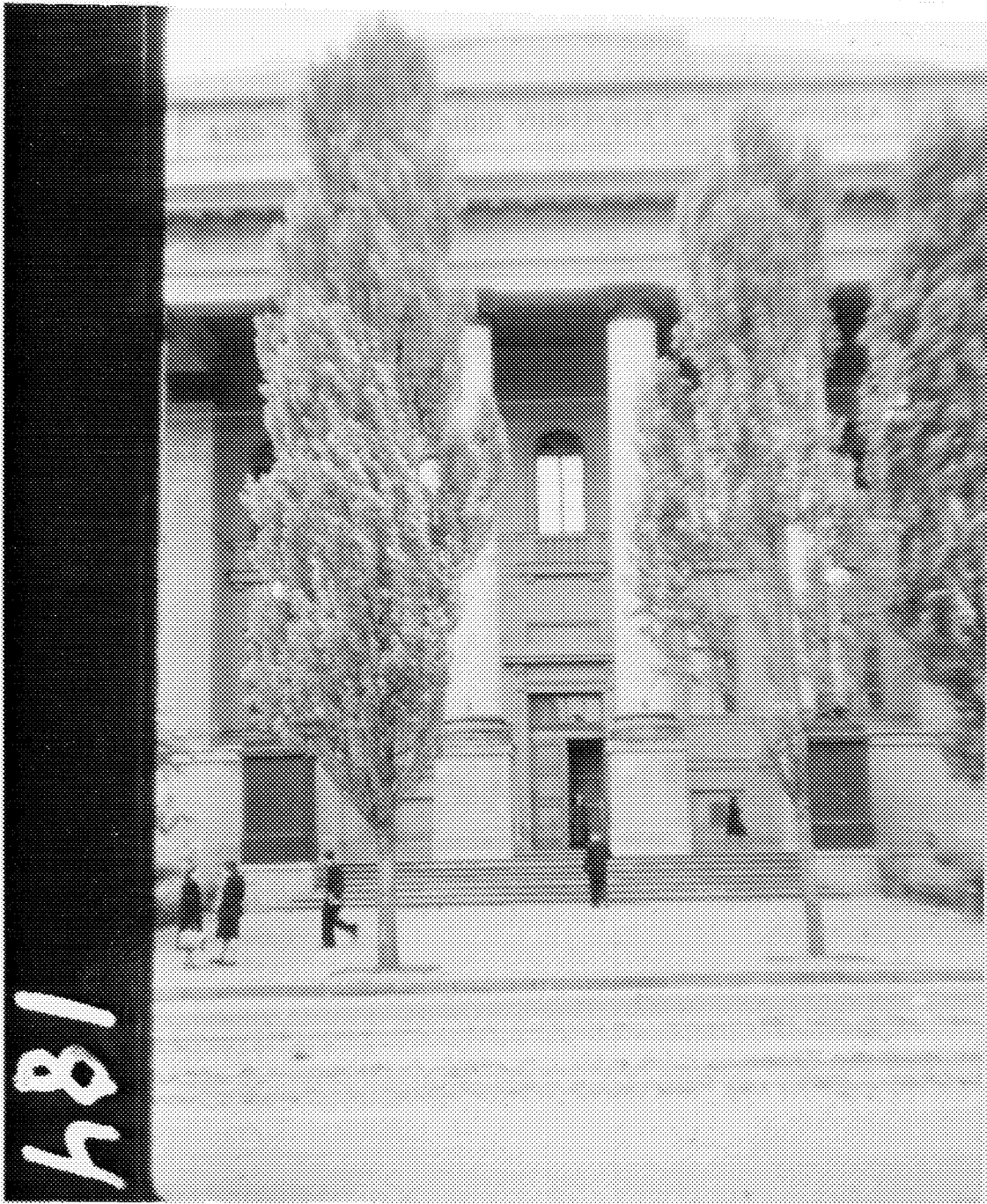


181

4N USSR UKRAINIAN SSR DNEPROPETROVSK 48 27 N 34 59 E
FROM PLANE AT AIRPORT. MAY 1956. OFFICIAL USE ONLY CIA 240689



182



184

2N USSR UKRAINIAN SSR KIEV 50 27 N 30 32 E
 ENTRANCE TO UNIVERSITY OF KIEV, MAY 1956,
 OFFICIAL USE ONLY

CIA 2100633

LN USSR UKRAINIAN SSR KIEV 50 27 N 30 32 E

POST OFFICE AND OFFICE BUILDING IN BACKGROUND, MAY 1956.

OFFICIAL USE ONLY

CIA 240637



189

IN USSR UKRAINIAN SSR KIEV 50 27 N 30 32 E
WINDOW OF RADIO AND TV STORE, MAY 1956.
OFFICIAL USE ONLY

CIA 240748



IN USSR UKRAINIAN SSR KIEV 50 27 N 30 32 E
ENTRANCE TO A LARGE DEPARTMENT STORE, MAY 1956.
OFFICIAL USE ONLY

CIA 2110717



LN USSR UKRAINIAN SSR KIEV 50 27 N 30 32 E
PAJAMA COUNTER AT LARGE DEPARTMENT STORE. MAY 1956.
OFFICIAL USE ONLY

CIA 210746



IN USSR UKRAINIAN SSR KIEV 50 27 N 30 32 E
POCKETBOOK COUNTER AT LARGE DEPARTMENT STORE. MAY 1956.
OFFICIAL USE ONLY CIA 210745



IN USSR UKRAINIAN SSR KIEV 50 27 N 30 32 E
PERFUME COUNTER AT LARGE DEPARTMENT STORE, MAY 1956.
OFFICIAL USE ONLY

CIA 240743



IN USSR UKRAINIAN SSR KIEV 50 27 N 30 32 E
STOCKING COUNTER AT LARGE DEPARTMENT STORE. STOCKINGS ARE
SYNTHETIC, "KAPON". MAY 1956. OFFICIAL USE ONLY CIA 2110712



IN USSR UKRAINIAN SSR KIEV 50 27 N 30 32 E
POT AND PAN COUNTER AT LARGE DEPARTMENT STORE, MAY 1956.
OFFICIAL USE ONLY

CIA 240741

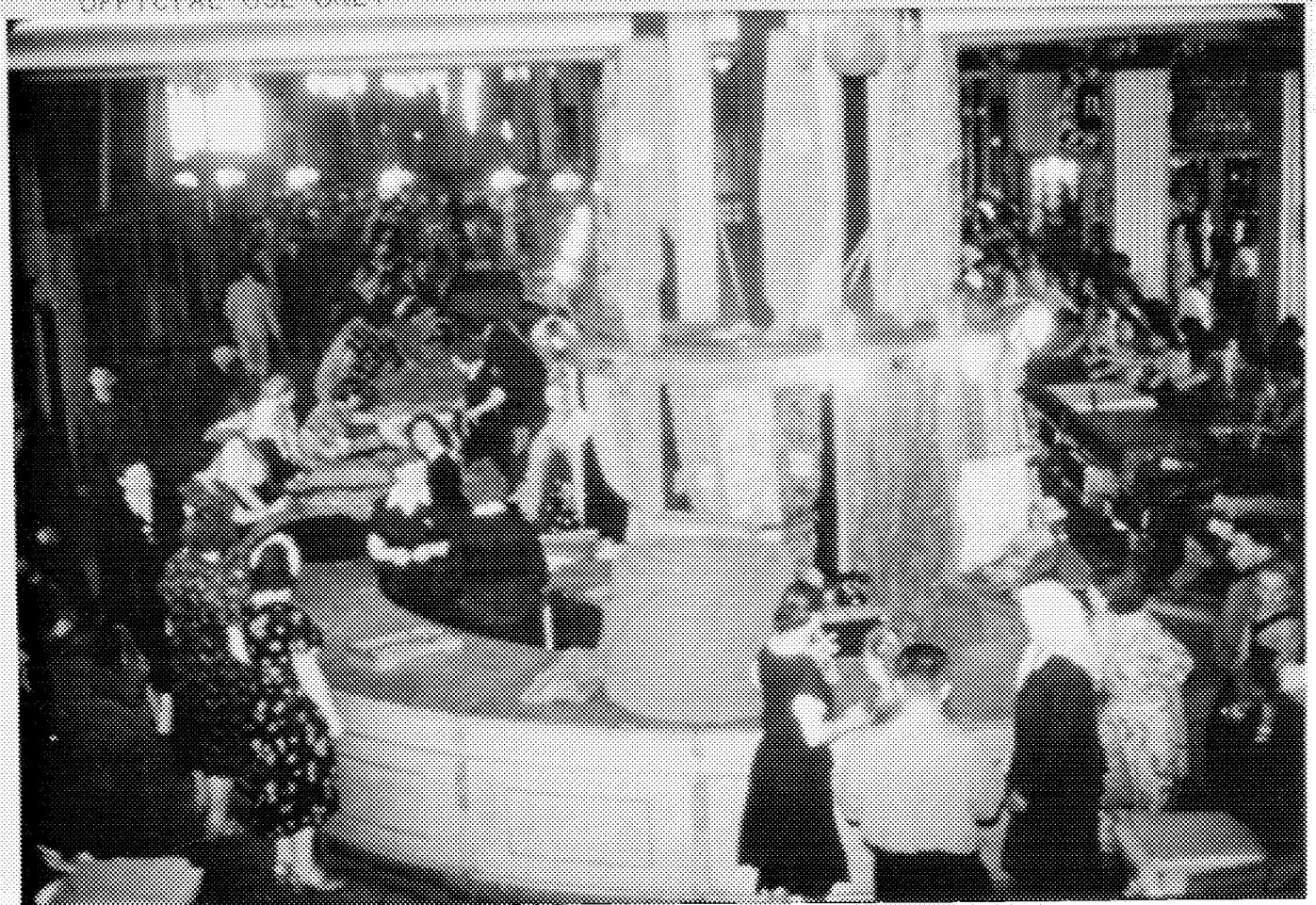


203

40

LN USSR UKRAINIAN SSR KIEV 50 27 N 30 32 E
YARD GOODS COUNTER AT LARGE DEPARTMENT STORE, MAY 1956.
OFFICIAL USE ONLY

CIA 280720



IN USSR UKRAINIAN SSR KIEV 50 27 N 30 32 E
NECKTIE COUNTER AT LARGE DEPARTMENT SOTE. MAY 1956.
OFFICIAL USE ONLY

CIA 2110739



205

IN USSR UKRAINIAN SSR KIEV 50 27 N 30 32 E
KERCHIEF COUNTER AT LARGE DEPARTMENT STORE. MAY 1956.
OFFICIAL USE ONLY

CIA 240733



206



IN USSR UKRAINIAN SSR KIEV 50 27 N 30 32 E
YARD GOODS COUNTER AT LARGE DEPARTMENT STORE. MAY 1956.
OFFICIAL USE ONLY

CIA 210737



IN USSR UKRAINIAN SSR KIEV 50 27 N 30 32 E
INTOURIST OFFICE IN A HOTEL. MAN USING ABACUS. MAY 1956.
OFFICIAL USE ONLY
CIA 240736



IN USSR UKRAINIAN SSR KIEV 50 27 N 30 32 E
TWO NEW BUILDINGS. MAY 1956. OFFICIAL USE ONLY

CIA 210735



210

IN USSR UKRAINIAN SSR KIEV 50 27 N 30 32 E
TV ANTENNA NEAR KRESCHATIK STREET, MAY 1956.
OFFICIAL USE ONLY

CIA 210744



115

USSR UKRAINIAN SSR KIEV 50 27 N 30 32 E
ARCHWAY AND BUILDINGS NEAR KRESHCHATIK STREET, MAY 1956.
OFFICIAL USE ONLY CIA 240734



IN USSR UKRAINIAN SSR KIEV 50 27 N 30 32 E
MAY 1956. OFFICIAL USE ONLY

CIA 210733



UN USSR UKRAINIAN SSR KIEV 50 27 N 30 32 E
KRESHCHATIK STREET NEAR ONE END. MAY 1956.
OFFICIAL USE ONLY

CIA 240732



218

IN USSR - UKRAINIAN SSR - KIEV (NR) 50 27 N 30 32 E
AT A MONASTERY. MAY 1956. OFFICIAL USE ONLY CIA 210731



221

IN USSR UKRAINIAN SSR KIEV (NR) 50 27 N 30 32 E
AT A MONASTERY. MAY 1956. OFFICIAL USE ONLY

CIA 240730



222

IN USSR - UKRAINIAN SSR KIEV (NR) 50 27 N 30 32 E
AT A MONASTERY, MAY 1955. OFFICIAL USE ONLY

CIA 240729



224



IN USSR UKRAINIAN SSR KIEV (NR) 50 27 N 30 32 E
IN CATACOMBS AT A MONASTERY, MAY 1956.
OFFICIAL USE ONLY

CIA 2110728





IN USSR UKRAINIAN SSR KIEV 50 27 N 30 32 E
A BOAT LANDING PLACE ON DNIEPER RIVER NORTH OF CITY. SIGN IS TO
SIGNAL BOATS. MAY 1956. OFFICIAL USE ONLY CIA 280727



IN USSR UKRAINIAN SSR KIEV 50 27 N 30 32 E
FROM BOAT ON DNIEPER RIVER, MAY 1956.
OFFICIAL USE ONLY

CIA 240726



2N USSR UKRAINIAN SSR KIEV 50 27 N 30 32 E
MAY 1976 OFFICIAL USE ONLY

CIA 210725



IN USSR UKRAINIAN SSR KIEV 50 27 N 30 32 E
EAST SIDE OF DNIEPER RIVER, SOUTH OF CITY. MAY 1956.
OFFICIAL USE ONLY

CIA 24072h



IN USSR UKRAINIAN SSR KIEV 50 27 N 30 32 E
FROM AN ICE CREAM PARLOR, MAY 1956.
OFFICIAL USE ONLY

CIA 240723



IN USSR UKRAINIAN SSR KIEV 50 27 N 30 32 E
FROM THE AIR, MAY 1956. OFFICIAL USE ONLY

CIA 260722



269

IN USSR UKRAINIAN

FROM PLANE FLYING FROM KIEV TO LVOV. FARM LANDS. MAY 1956.

OFFICIAL USE ONLY

CIA 240721



270

UN USSR UKRAINIAN SSR LVOV 49 50 N 24 00 E
LVOV AIRPORT FROM PLANE WHILE LANDING. MAY 1956.
OFFICIAL USE ONLY

CIA 210720



271

IN USSR UKRAINIAN SSR LVOV 49 50 N 24 00 E
LVOV AIRPORT, HANGER AND HELICOPTERS, MAY 1956.
OFFICIAL USE ONLY

CIA 240719



271

4N USSR UKRAINIAN SSR LVOV 49 50 N 24 00 E
LVOV AIRPORT. NOTE ONLY ONE RUNWAY. MAY 1956.
OFFICIAL USE ONLY

CIA 240713



278