

E-1229

Sanitized - Approved For Release CIA-RDP83-00423R000700280002-2

PRESENTATION FORM FOR GRAPHIC MATERIAL

18 June 1953

(Submit to HQ-00/C in triplicate with process sheet attached)

DIST: ORIG-GRAPHICS; DUPL-CASE FILE; TRIPL-SOURCE FILE; QUAD-FO RECORD

GIFT

LOAN

AREA

Finland

SUBJECT

Finnish Mines and Quarries

NUMBER OF ITEMS AND CATEGORY (Still photographs, negatives, or slides)

Four photos 1 1/2 x 1 1/2

DATE OF EXPOSURE April 1953

CHECK CLASSIFICATION OF PHOTOGRAPHS WHEN SEPARATED FROM THIS FORM. (The classification need not be the same.)

U. S. OFFICIALS ONLY

CIA OFFICIALS ONLY

SECRET

CONFIDENTIAL

RESTRICTED

UNCLASSIFIED

25X1X6

BRIEF SOURCE DESCRIPTION



IS SOURCE APT TO MAKE ADDITIONAL PHOTOGRAPHIC MATERIAL AVAILABLE? Yes No

MAY SOURCE'S NAME BE REVEALED TO GRAPHICS REGISTER, OCD, IF REQUIRED? Yes No

EXPEDITE

DESCRIPTION OF MATERIAL

Numbers correspond with numbers on back of photos

1. Feldspar quarry at Kaatiala, Owner: Suomen Mineraali Oy, Helsinki, Annual production about 10 thousand ton feldspar.
2. Asbestos Mine at Paakkila, Owner: Suomen Mineraali Oy, Helsinki Headframe for underground mining. Shaft 80 m deep, 2, 5x3, 0 m, 3-compartment, is now ready. Annual production of all grade of asbestos fibre is about 10 thousand tons.
3. Talc Mill at Paltamo Owner: Suomen Mineraali Oy, Helsinki. - oik -
4. Excavating of Diatomite at Komu-morass Owner: Suomen Mineraali Oy, Helsinki.

CIA-192421-192424

checked with HQ 20 Jan 54 for sub. promised

originals to repro. for 4x6 WP - 25 June - 25X1A9a

called [redacted] request additional identification for 1,2,+4. orig. ret - 30 June - (table 90 days)

GR CONTROL NO. 25X1A2g

DATE FORWARDED TO GR BY GMP

22 June 1953

RETURN DEADLINE (IF LOAN)

30 June 1953

25X1A9a

NITRATE FILM EXPLOSIVE-SHIP BY EXPRESS UNDER SPECIAL CARRIER REGULATIONS

Sanitized - Approved For Release : CIA-RDP83-00423R0007

FINLAND VAASA KAATIALA APPROX. 62 48 N
23 30 E SUOMEN MINERAALI OY.
FELDSPAR QUARRY. ANNUAL PRODUCTION ABOUT
10,000 TONS. 1953.
OFFICIAL USE ONLY CIA 192423

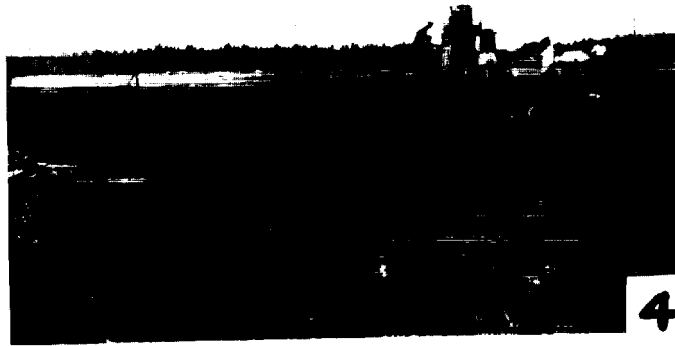


FINLAND OULU PALTAMO 64 18 N 27 39 E
SUOMEN MINERAALI OY. TALC MILL. 1953.
OFFICIAL USE ONLY CIA 192421



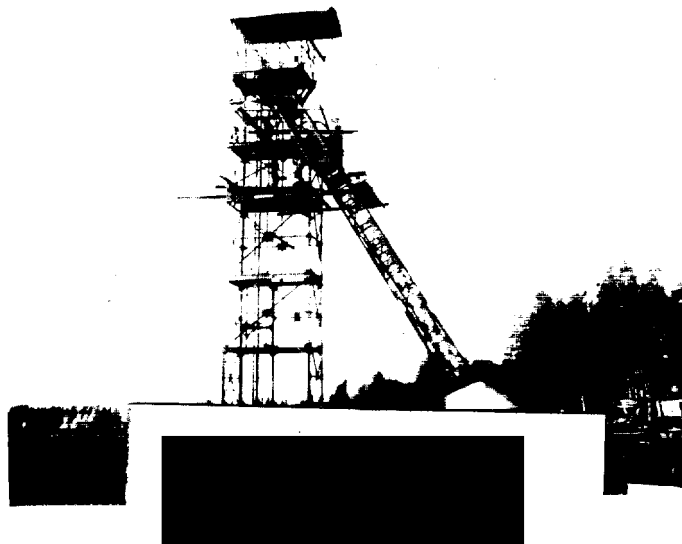
FINLAND OULU KOMU MORASS APPROX. 63 38 N
25 58 E SUOMEN MINERAALI. EXCAVATING
DIATOMITE. 1953.
OFFICIAL USE ONLY

CIA 192424



FINLAND OULU PAAKKOLA 66 00 N 24 41 E
SUOMEN MINERAALI OY. ASBESTOS MINE. HEAD-
FRAME FOR UNDERGROUND MINING. SHAFT, 80 FT.
DEEP; ANNUAL PRODUCTION, A1 GRADE ASBESTOS
FIBER, ABOUT 10,000 TONS. 1953.
OFFICIAL USE ONLY

CIA 192422



25X1A2g

File