

PROCESSED COPY

542970

CENTRAL INTELLIGENCE AGENCY  
INFORMATION REPORT

This material contains information affecting the National Defense of the United States within the meaning of the Espionage Laws, Title 18, U.S.C. Secs. 793 and 794, the transmission or revelation of which in any manner to an unauthorized person is prohibited by law.

S-E-C-R-E-T  
NOFORN

COUNTRY	Czechoslovakia	REPORT	
SUBJECT	Uranium Processing Plant of the IXth Inspectorate of the Jachymov Mines at Nejdek	DATE DISTR.	August 1, 1956
DATE OF INFO.		NO. OF PAGES	1
PLACE ACQUIRED		REQUIREMENT NO.	RD
		REFERENCES	

This is UNEVALUATED Information

THE SOURCE EVALUATIONS IN THIS REPORT ARE DEFINITIVE.  
THE APPRAISAL OF CONTENT IS TENTATIVE.  
(FOR KEY SEE REVERSE)

[Redacted]

[Redacted] report describing the location and layout of the plant and plant equipment of the uranium processing plant of the IXth Inspectorate of the Jachymov Mines at Nejdek (N 50-20, E 12-45). The report includes six sketches with legends.

[Redacted]

25X1

25X1

25X1

25X1

25X1

TO	RETAIN	DESTROY
		<i>[Handwritten mark]</i>

S-E-C-R-E-T  
NOFORN

25X1

STATE	X	ARMY	X	NAVY	X	AIR	X	FBI		AEC				
-------	---	------	---	------	---	-----	---	-----	--	-----	--	--	--	--

(NOTE: Washington distribution indicated by "X"; Field distribution by "#".)

25X1

# CENTRAL INTELLIGENCE AGENCY INFORMATION REPORT

This material contains information affecting the National Defense of the United States within the meaning of the Espionage Laws, Title 18, U.S.C. Secs. 793 and 794, the transmission or revelation of which in any manner to an unauthorized person is prohibited by law.

25X1

S-E-C-R-E-T  
NOFORN

COUNTRY	Czechoslovakia	REPORT	
SUBJECT	Uranium Processing Plant of the IXth Inspectorate of the Jachymov Mines at Nejdek	DATE DISTR.	August 1, 1956
DATE OF INFO.		NO. OF PAGES	1 25X1
PLACE ACQUIRED		REQUIREMENT NO.	RD
		REFERENCES	

This is UNEVALUATED  
Information

THE SOURCE EVALUATIONS IN THIS REPORT ARE DEFINITIVE.  
THE APPRAISAL OF CONTENT IS TENTATIVE.  
(FOR KEY SEE REVERSE)

[Redacted] report describing the location and layout of the plant and plant equipment of the uranium processing plant of the IXth Inspectorate of the Jachymov Mines at Nejdek (N 50-20, E 12-45). The report includes six sketches with legends.

25X1

25X1

25X1

25X1

S-E-C-R-E-T  
NOFORN

STATE	X	ARMY	X	NAVY	X	AIR	X	FBI		AEC					
-------	---	------	---	------	---	-----	---	-----	--	-----	--	--	--	--	--

(NOTE: Washington distribution indicated by "X"; Field distribution by "#".)

Approved For Release 2007/12/14 : CIA-RDP83-00418R005300420001-5

**Page Denied**

**SECRET**  
NOFORN

Approved For Release 2007/12/14 : CIA-RDP83-00418R005300420001-5

1. The IX. Inspectorate is situated northeast of Nejdek. The plant lies by the eastern side of the highway and the railroad line Nejdek - Neve Hamry and faces the Vysoka Pec railway stop. The main building of the plant is in the former paper-mill. The plant extends along the railroad line about 500 meters and is about 350 meters wide. Refuse material is being piled in the southern direction - towards Nejdek.

25X1

2. Legend to plan "A":

The plant is enclosed by double wire fence, approximately  $2\frac{1}{2}$  meters high. The space between each fence is about 150-180 centimeters.

1. Entrance and gatekeeper's ledge. Wooden building, 8 x 10 meters.
2. Railroad spur.
3. Receiving store for soda ( $\text{Na}_2\text{CO}_3$ ). Wooden building, 60 x 10 meters. From this store the soda is transferred into the Soda chamber.
4. Store for hydrochloric acid in bottles. Two wooden buildings, 10 x 12 meters.
5. Tank for hydrochloric acid. The tank is protruding above the ground approximately 3 meters and holds about 20,000 liters.
6. Pumps and conveyer belts. Groundfloor masonry building, L-shaped, 50 x 10, and 40 x 12 meters. In this building are located the water pumps and the manipulating machinery for conveyer belts.
7. Main building. Former paper-mill adapted to present purposes. The walls are 120 cm thick. The building is approximately 190 x 200 meters large. In this building all stages of processing of the uranium ore takes place.
8. Mixing basin. Wooden basin, 12 meters in diameter, about 5 meters high. The basin is hermetically closed. The material is being stirred by a revolving arm.
9. Diluting basin. This basin has the same measurements as the mixing basin. Here the material is diluted with clear water and then flown under pressure into the Soda chamber.
10. Three tanks containing liquid radioactive material. Metal tanks, each about 10 meters in diameter and 8-10 meters high. From these tanks the liquid material is pumped into the cistern-cars.
11. Stores for iron bars and steel. Two wooden buildings, 30 x 20 meters and 8 x 8 meters.

~~SECRET~~ NOFORN

Approved For Release 2007/12/14 : CIA-RDP83-00418R005300420001-5

NOFORN

25X1

12. Transformer.
13. Compressor hall. A groundfloor masonry building, 30 x 10 meters = 8 compressors are installed in this hall.
14. Water tower. There are two water towers in the plant, one is next to the compressor hall and the other is situated outside the plant's area.
15. Gateway. Two-winged gate, wooden, barbed wire on top. This gate is closed and is opened for driving out by a plant's guardman.
16. Store of empty sacks.
17. Observation towers. There are 6 wooden guard towers, about 5 meters high, 2½ x 2½ meters at the base. Each tower is manned by one VS (Interior guard) guard who carries <sup>sub</sup> machine gun. The towers are interconnected by telephone, and also with the plant and the barracks of the VS.
18. Stairs. Along the southern side of the plant, from the road, are stairs leading to the billets and kitchen.
19. Road along the southern side of the plant. Signs are displayed here "Pruchod pouze jen bez zastaveni" (thoroughfare only - no stopping allowed).
20. Coal store.
21. Pipes for refuse material. Metal pipes of about 60 cm in diameter, leading from main building outside to the heap.
22. Roofing to protect the pipes and repair shop for cast-iron boards. It is narrow wooden shed about 5 meters wide and 60 meters long.
23. Store for electrical material. A building adjoining #22, wooden, 8 x 8 meters. A few meters apart there is another wooden building housing electrical material.
24. Fence. Barbed-wire double fence. Space between the fences is covered with white sand. On the inside fence there are electric lamps placed, approx. 30 meters apart from one another.
25. Barracks for VS guards. A wooden building, 40 x 10 meters where are about 50 men billeted.
26. A wooden shed for parking of motorcycles and bicycles belonging to the plant's employees.
27. Time clock. At the entrance to the main building is the time clock used by all employees except the Russians. Two women are controlling the time. /sic/
28. Drafting hall. A two-storied building, about 16 x 10 meters.
29. Plant's first aid post. A groundfloor building, masonry, 12 x 10 meters.

NOFORN

NOFORN

0300

25X1

30. Water supply canal. From the brook which runs between the highway and the plant towards the western end of the plant, leads a concrete canal of about 8 meters width, 2 meters deep and about 80 meters long.
31. Water works.
32. Storehouse for carbide and soda. A wooden building, 100 x 20 meters.
33. Laboratory of the OTK. Only Russians are working in the laboratory. Entry is guarded by Militia men. It is a two-storeyed building (residence of the former owner of the paper-mill), about 10 x 15 meters.
34. Storehouse. A large wooden building, 50 x 40 meters, used for storage of wooden frames and boards for the filtrating presses Pionyr and Normal.
35. Storehouses. Four wooden huts, approx. 40 x 12 meters; storage for: motors, filtrating (silon) cloths, cabels, cast-iron frames and boards, working clothes and similar material.
36. Washroom for filtrating cloths. A wooden building adjoining the main building. There are two washing machines installed for washing out the filtrating cloths.
37. Chimney approx. 30 meters high, brick.
38. Billets for workers are in Hamry and in Vysoka Pec. One of the building is about 60 x 14 meters in which is accommodation for 65 persons.
39. Administrative section. A wooden building, 40 x 10 meters.
40. Garages and Fire station. A groundfloor building, masonry.
41. Brook.

Legend to plan "C": Description of the groundfloor of the main building.

1. Garage. Space for 3 trucks and one passenger car.
2. Repair shop for machines occupying 6 rooms.
3. Basin for special water. There 6 basins, each for 1,000 /liters ?/.
4. Storage of radioactive muddy material.
5. Compression chamber. There are 3 compressors.
6. Packing section and weighing of radioactive material.
7. Hall housing Ultrafiltr Special presses. There are 6 presses.
8. Boilerhouse. There 4 boilers in this room, (2 meters in diameter and 6 meters long. Purpose of these boilers is not known to Source.
9. Hall, where are 8-10 identical boilers as in #8 room. There are also 6 pumps in this hall. Purpose unknown to Source.

NOFORN

SECRET  
NOFORN

25X1

10. Mills. Here are 3 spheric mills equipped with electric motors.
11. Suction chamber.
12. "Sodna komora" (Soda chamber). Here are 18 basins, wooden filled with material which is being mixed with Soda. Each holding about 20,000 liters.
13. Chemical solutions section. Here are 9 basins, each for 2,000 liters. The basins are joined by pipes and contain the special water mixed with some chemicals unknown to Source. Here are also placed 3 electric motors of 1,000 HP, which drive the mills.
14. Pressure pumps and pipes.
15. Soda store. Here the soda is poured from the outside into the store and from the store the soda is forced through pressure pipes into individual basins.
16. Reservoirs. These supply with water the "blok h". It is not known to Source whether they contain special or ordinary water.
17. Pressure pumps. These pumps are used for tightening of the presses.
18. Boiler-house. Here are 4 boilers each of 12 atmosphere, type Siemens. From here steam is being supplied to the plant.
19. Chimney - used by boiler-house.
20. Boilers to supply high-pressured steam to the furnaces (Varny).
21. Motors repairing shop.

Legend to plan "D": Description of the 2nd floor of the main building.

1. Motors repairing shop. Here are 6 compressors for the Pionyr presses <sup>whose</sup> function is to close the presses.
2. Presses Pionyr, Norma and Normal. Here are 4 rows each consisting of 8 presses type Pionyr (36). These are used for the first stage of processing the uranium ore. Then there are 24 presses type Norma for the second stage of processing. For the third stage of processing are 4 presses type Normal. (Most of these presses were installed in June 1955.)
3. Press hall (Stara lisovna). Here are 38 presses: 16 Pionyr presses, 16 Norma presses and 4 Normal presses as well as 2 Ultrafiltr Special presses.
4. Varna I. (Furnace I). Here are 18 wooden basins, embedded in concrete, each for 2,000 liters. Here is being boiled the special water with ore which was previously mixed with some chemicals and soda and then the substance tested with litmus-paper. (The material is prepared for furnace II).
5. Varna II. (Furnace II). Here are 14 wooden basin (same measurements as in furnace I). Into each basin 1 1/2 - 2 barrels (one barrel contains 70 kgs) of Hydrochloric acid is added. The basins have underneath some heating devices (probably steam) and the mixture is heated to certain temperature unknown to Source.

SECRET  
NOFORN

6. Shifting basins. In this section are 21 basins belonging to the Furnace II. There are also 2 supplementary basins with special water, and one basin containing some chemicals for purpose to bring the mixture to proper liquid.
7. Basins with special water. Here are 9 basins containing special water.
8. Here are a few high-pressured boilers for unknown(to Source)purpose.
9. In this section are 7-9 basins for further mixing of the radioactive material.
10. Store of spare parts to the Normal and Norma presses.
11. Pressure pipes - not in use.
12. Transformer station.

Legend to plan "E": Description of the 3rd floor of the main building.

1. Offices.
2. Ventilation system. From here ventilation in furnaces, press halls and others is being manipulated.
3. Basins containing the material for processing in the presses.
4. Pressure pumps. These pumps transfer the mixture from furnace I. into the furnace II.
5. Suction turbines for presses Pionyr and Norma.
6. Boilers for the main boilerhouse. Here are also 6 automatic furnaces.
7. Boilers for Furnace II. There are 6 boilers of 12 atmosphere.
8. Motors of the ventilation system for Seda chamber and Furnace I.

Legend to plan "F": Description of the basement of the main building.

1. Pressure-chamber pumps. Here are located pumps for transferring the material into the mixing basins.
2. The rubbing mill base and suction system leads into the basement.
3. Special-water tanks. Here are 12 tanks each for 2,000 liters filled with special water.
4. Pressure chamber.
5. Carbide chamber.

x x x

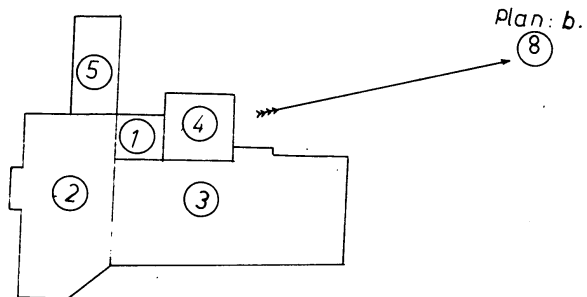
NOFORN





PLAN F
SCALE 1:2000

NOFORN



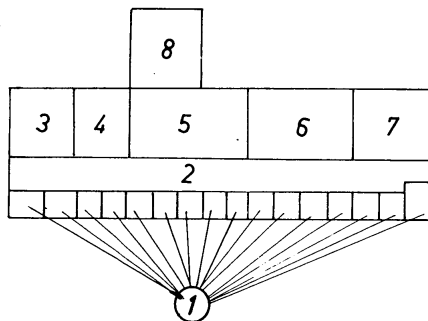
NOFORN



NOFORN

10  
25X1

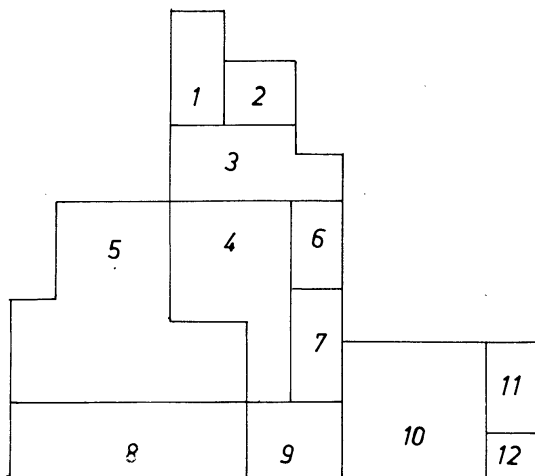
PLAN E
SCALE 1:2000



NOFORN



NOFORN

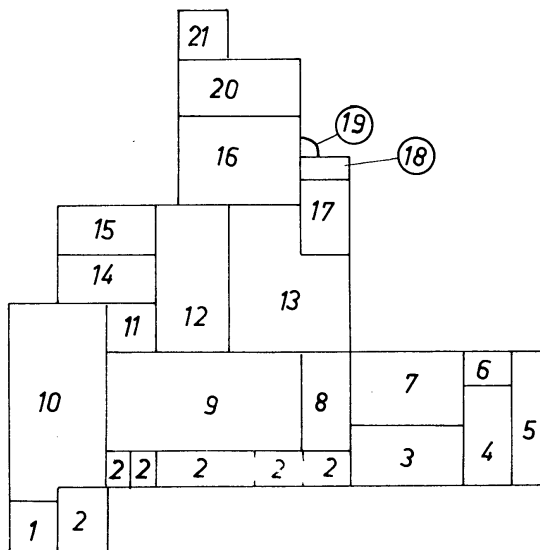


<i>PLAN D</i>
<i>SCALE 1:2000</i>

NOFORN



NOFORN

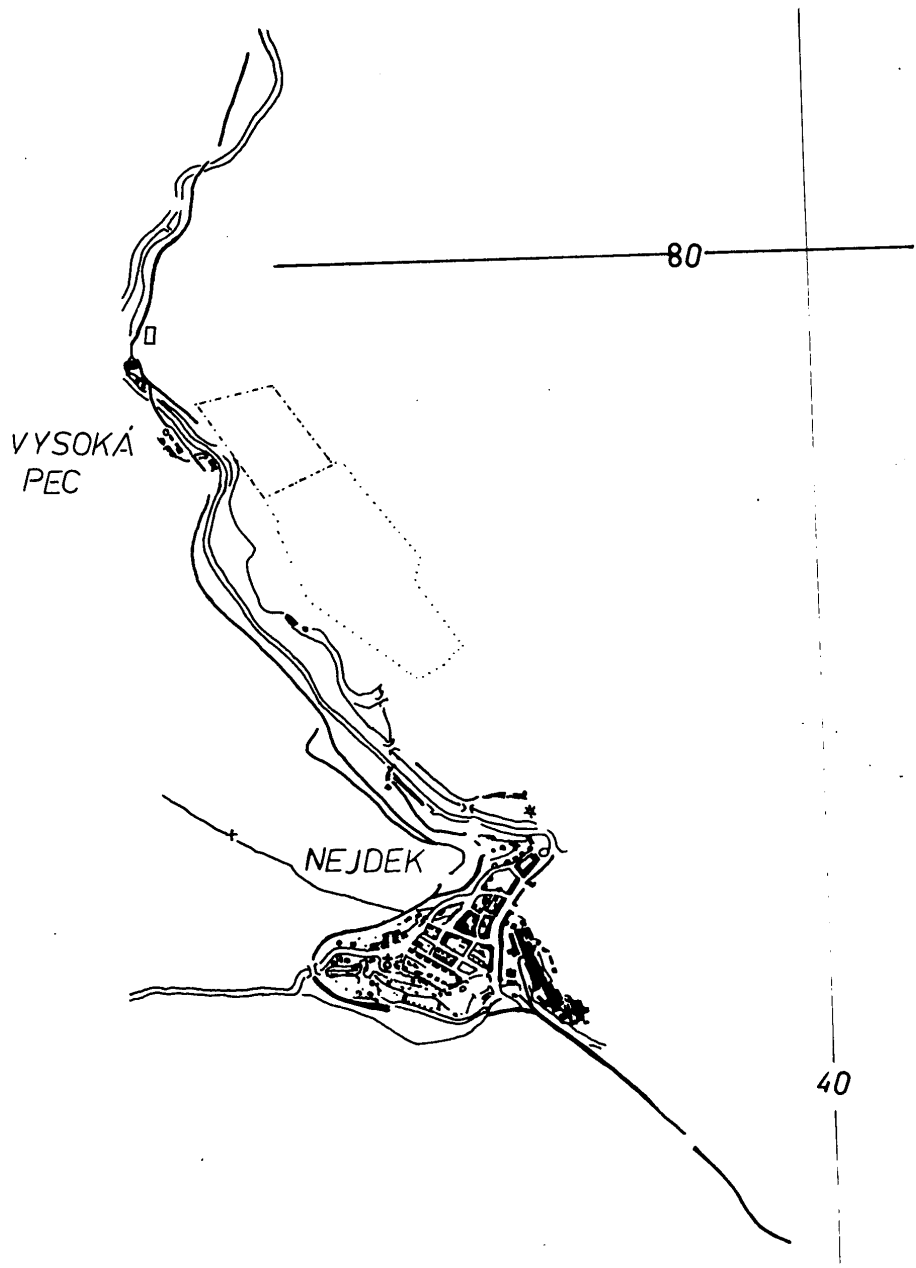


NOFORN

SECRET  
NOFORN

25X1

NOVÉ  
HAMRY



SCALE 1:25,000  
SHEET 3849/4E

SECRET  
NOFORN

