

25X1

PROCESSING COPY

*ER*

CENTRAL INTELLIGENCE AGENCY  
INFORMATION REPORT

0480485

This material contains information affecting the National Defense of the United States within the meaning of the Espionage Laws, Title 18, U.S.C. Secs. 793 and 794, the transmission or revelation of which in any manner to an unauthorized person is prohibited by law.

S-E-C-R-E-T

25X1

COUNTRY	Bulgaria	REPORT	
SUBJECT	Photographs of the Port of Burgas	DATE DISTR.	16 April 1956 25X1
DATE OF INFO.		NO. OF PAGES	1 25X1
PLACE ACQUIRED		REQUIREMENT	
DATE ACQUIRED		REFERENCES	

NOT  
This is UNEVALUATED Information

25X1

THE SOURCE EVALUATIONS IN THIS REPORT ARE DEFINITIVE.  
THE APPRAISAL OF CONTENT IS TENTATIVE.  
(FOR KEY SEE REVERSE)

Attached hereto are two dossiers containing extensive photographs of the Port of Burgas

25X1

25X1

S-E-C-R-E-T

25X1

STATE	X	ARMY	X	NAVY	X	AIR	X	FBI		AEC				
-------	---	------	---	------	---	-----	---	-----	--	-----	--	--	--	--

25X1

NOTE: Washington distribution indicated by "X"; Field distribution by "#".

Approved For Release 2008/12/02 : CIA-RDP83-00418R003900410001-2

**Page Denied**

25X1

Next 2 Page(s) In Document Denied

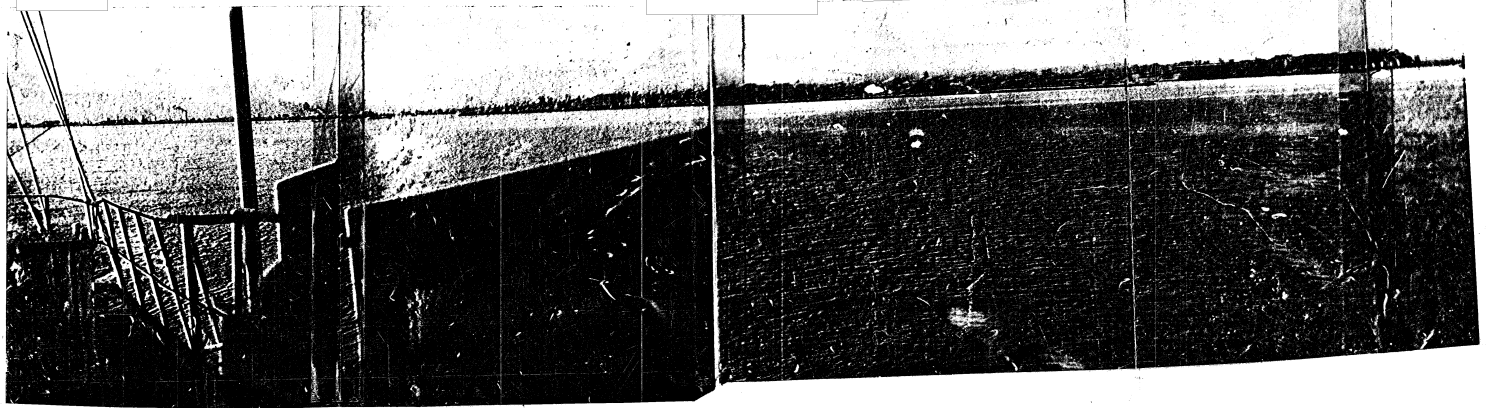
Approved For Release 2008/12/02 : CIA-RDP83-00418R003900410001-2

SECRET

A GENERAL VIEW OF THE DOCK

BULGARIA BURGAS BURGAS 42 30 N 27 30 E  
HARBOR

BULGARIA BURGAS BURGAS 42 30 N 27 30 E  
HARBOR PANORAMA



SECRET

25X1

25X1

25X1

25X1

25X1

25X1

25X1

25X1

25X1

25X1

**Page Denied**

25X1

SECRET

25X1

B' EAST BREAKWATER

1. The barrier of the port entrance, kept open by buoys.
2. Beacon outside the port.
3. Green beacon of the port entrance.
4. Small wooden patrol craft.

25X1

SECRET

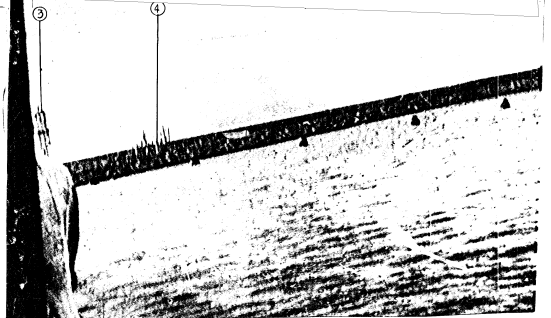
25X1

BULGARIA BURGAS BURGAS 42 30 N 27 30 E  
EAST BREAKWATER. 2. BEACON OUTSIDE PORT.

Approved For Release 2008/12/02 : CIA-RDP83-00418R003900410001-2  
BULGARIA BURGAS BURGAS 42 30 N 27 30 E  
EAST BREAKWATER. 1. BARRIER OF PORT ENTRANCE, KEPT OPEN BY BUOYS.



BULGARIA BURGAS BURGAS 42 30 N 27 30 E  
EAST BREAKWATER. 3. GREEN BEACON AT PORT ENTRANCE; 4. SMALL WOODEN SHIP.



25X1

25X1

25X1

25X1

**Page Denied**

25X1

SECRET

25X1

C' LANDING CRAFT INSIDE THE EAST BREAKWATER

1. Three Bulgarian landing craft inside the East Breakwater.

25X1

25X1

SECRET



Approved For Release 2008/12/02 : CIA-RDP83-00418R003900410001-2

25X1

**Page Denied**

Approved For Release 2008/12/02 : CIA-RDP83-00418R003900410001-2

25X1

BULGARIA BURGAS BURGAS 42 30 N 27 30 E  
LANDING CRAFT INSIDE EAST BREAKWATER.



Approved For Release 2008/12/02 : CIA-RDP83-00418R003900410001-2

BULGARIA BURGAS BURGAS 42 30 N 27 30 E

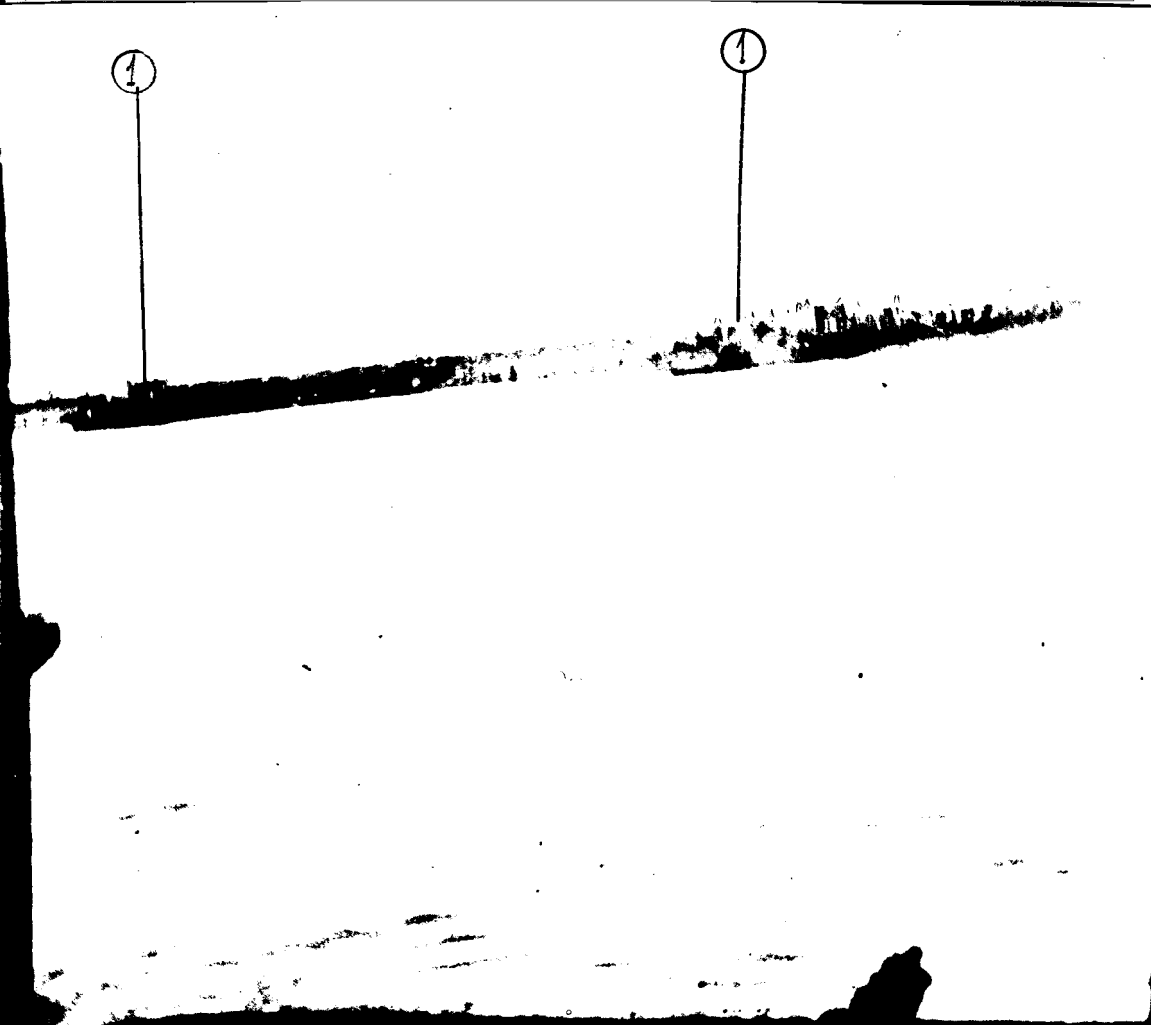
25X1

LANDING CRAFT INSIDE EAST BREAKWATER.

25X1

①

①



25X1

**Page Denied**

25X1

SECRET

25X1

D' NORTH QUAY OF THE PORT

1. Port warehouses.
2. Base of a crane of the port, under which passes a railway line.
3. Railroad cars for the transportation of fuel, each of 10 - 15 tons capacity. Each train has 30 such cars.
4. <sup>GUARD</sup> Outpost used by the police, the customs and the rest of the port authorities.
5. Small self-propelled crane.

25X1

25X1

Approved For Release 2008/12/02 : CIA-RDP83-00418R003900410001-2

BULGARIA BURGAS BURGAS 42 30 N 27 30 E  
NORTH QUAY OF PORT. GUARD OUTPOST USED BY POLICE,  
CUSTOMS AND PORT AUTHORITIES. 5.-SELF-PROPELLED 25X1  
CRANE. OCTOBER 1955.



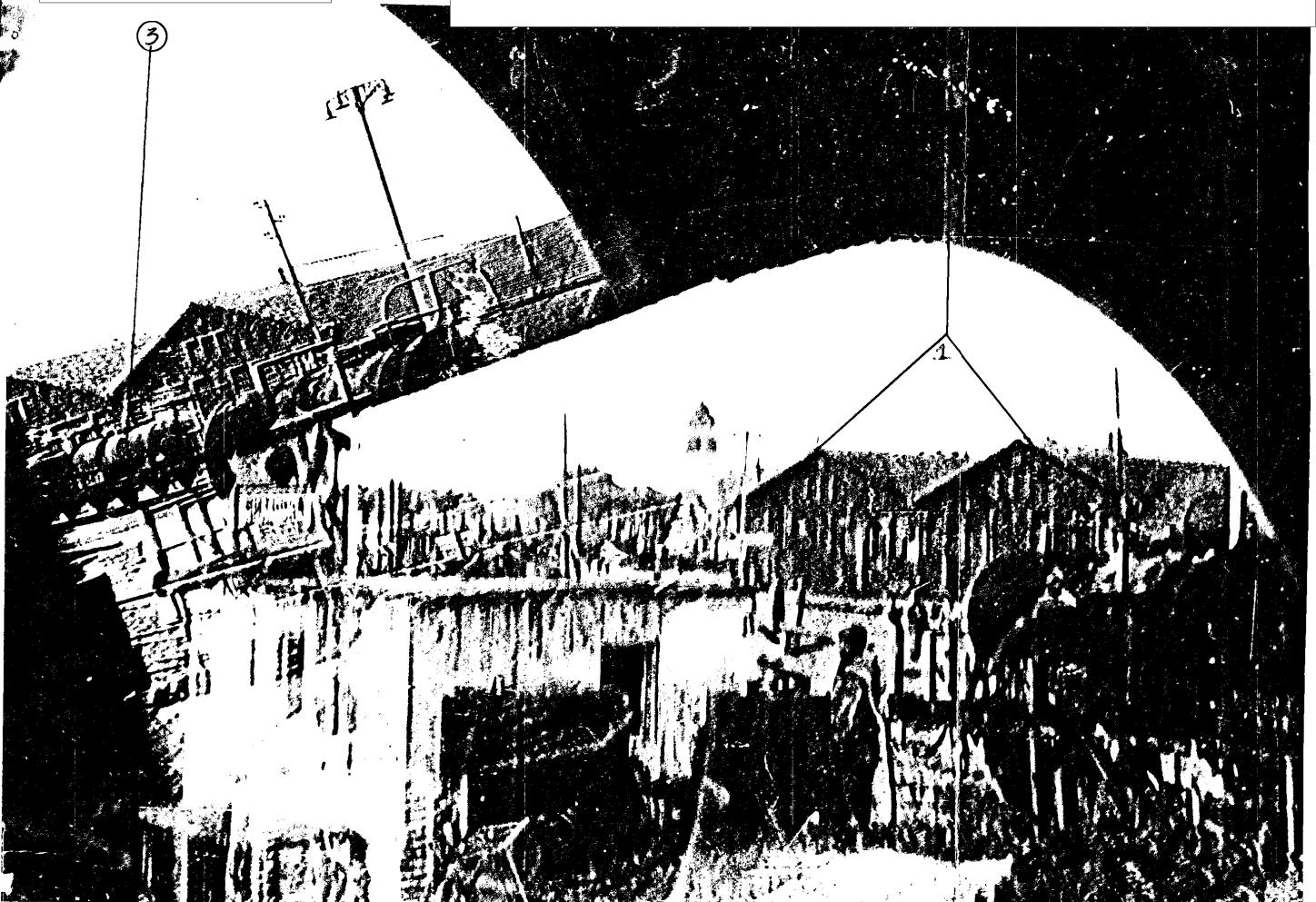
Approved For Release 2008/12/02 : CIA-RDP83-00418R003900410001-2

BULGARIA BURGAS BL Approved For Release 2008/12/02 : CIA-RDP83-00418R003900410001-2

25X1

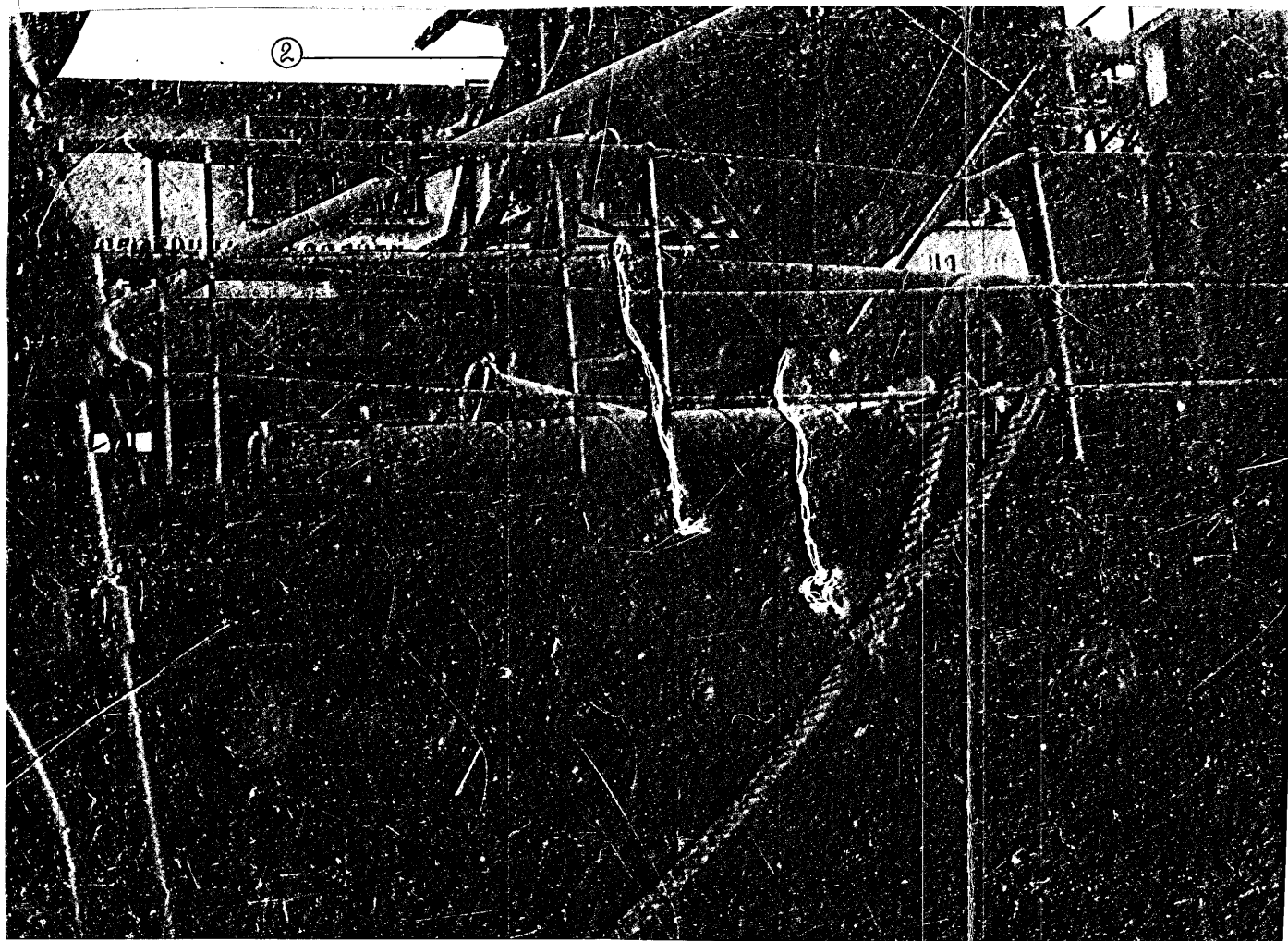
NORTH QUAY OF PORT 1. WAREHOUSES 3. TANK RAILROAD CARS. OCTOBER 1955

25X1



BULGARIA BURGAS B Approved For Release 2008/12/02 : CIA-RDP83-00418R003900410001-2  
NORTH QUAY OF PORT. BASE OF CRANE, UNDER WHICH PASSES A RAILWAY LINE. OCTOBER 1955.

25X1





25X1

**Page Denied**

SECRET

25X1

25X1

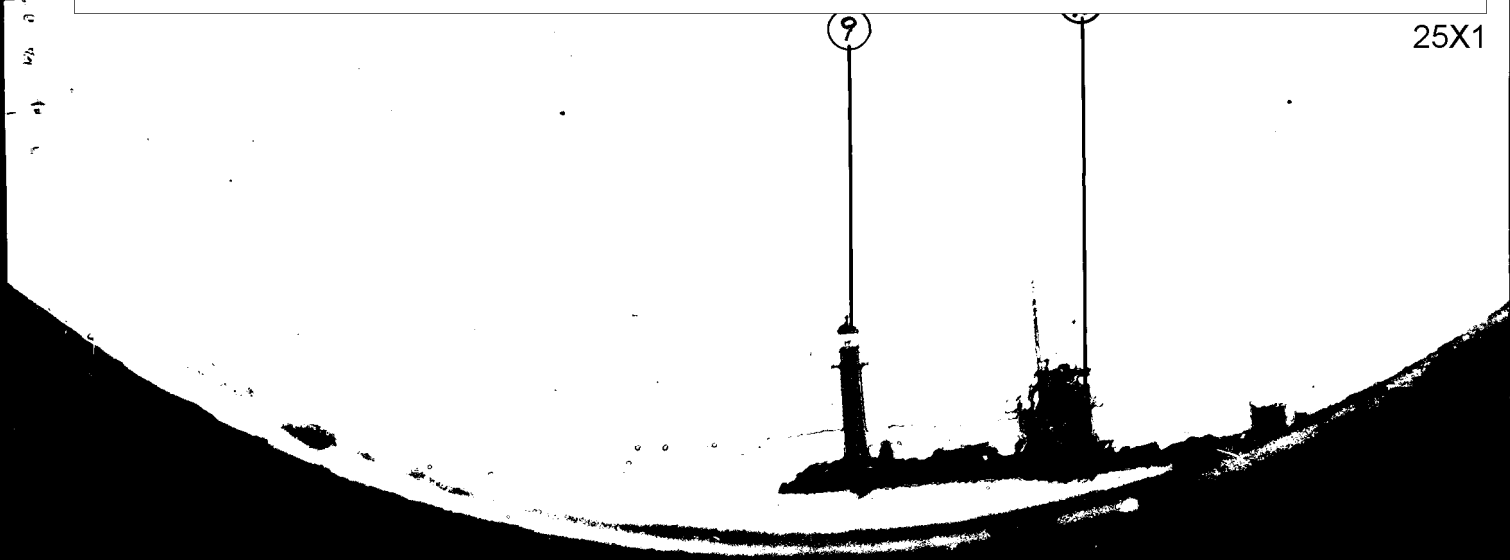
E' N.W. SIDE OF THE PORT

1. Building where the naval services are located.
2. Anchorage of small oil-driven vessels.
3. <sup>A</sup>60 to 70-meter long pier under construction in the center of the port.  
It begins from the north quay and goes towards the south.
4. Buoy marking the place up to which large blocks of rock have been placed into the water, for the construction of the new pier.
5. Naval units at their permanent anchorage.
6. S.W. Breakwater.
7. Various buildings of the naval base.
8. Patrol vessel of the navy.
9. Red beacon of the S.W. Breakwater.
10. Guard-post with <sup>SIGNAL</sup> semaphore station, on the S.W. Breakwater.

25X1

25X1

Approved For Release 2008/12/02 : CIA-RDP83-00418R003900410001-2  
BULGARIA BURGAS BURGAS 4< 20 IN 21 20 L  
NORTHWEST SIDE OF PORT. 9. RED BEACON OF SOUTHWEST BREAKWATER  
10. GUARD-POST WITH SIGNAL STATION ON SOUTHWEST BREAKWATER.

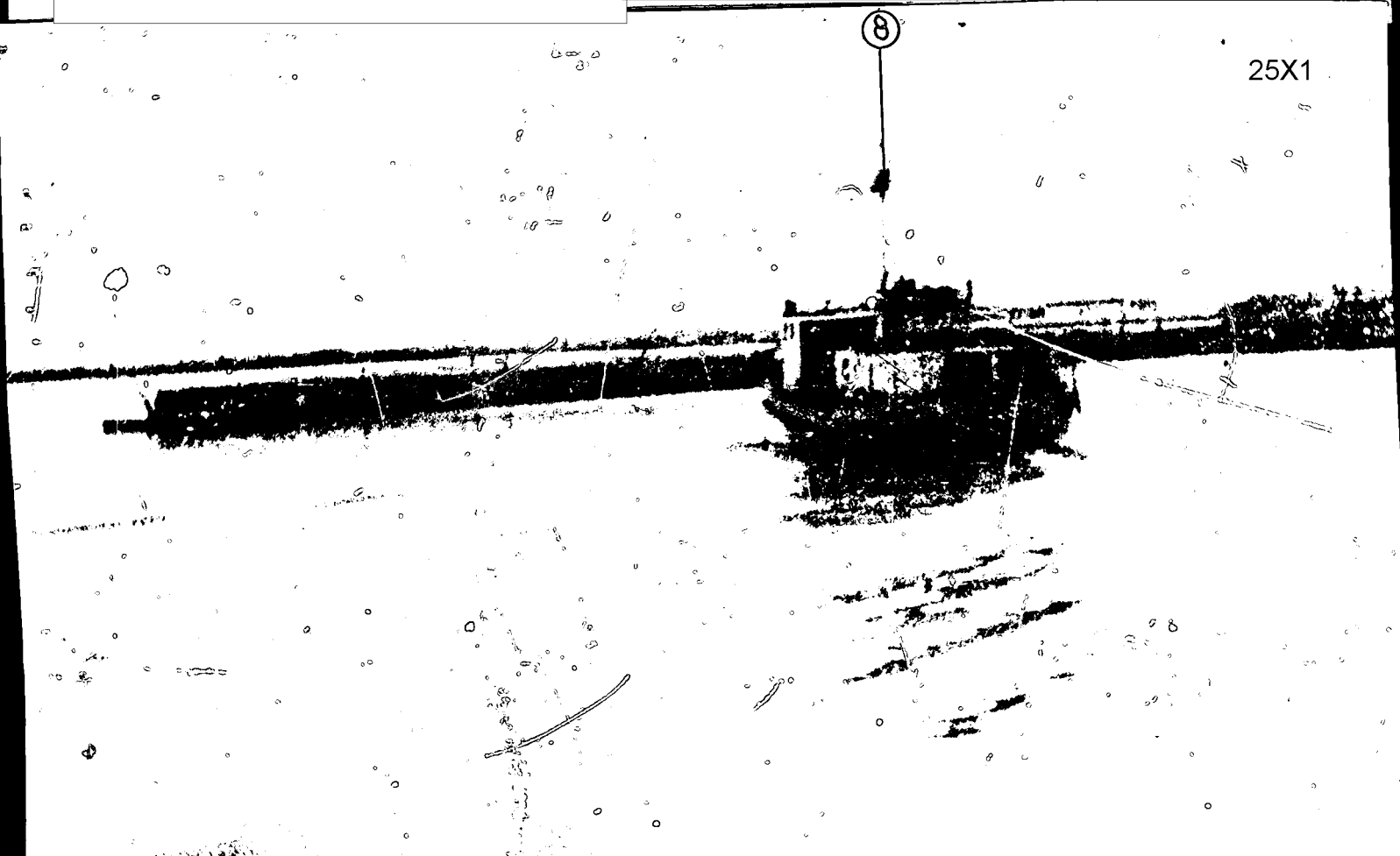


25X1

Approved For Release 2008/12/02 : CIA-RDP83-00418R003900410001-2

25X1

BULGARIA BURGAS BURGAS 42 30 N 27 30 E  
NORTHWEST SIDE OF PORT. NAVAL PATROL VESSEL. OCTOBER 1955.

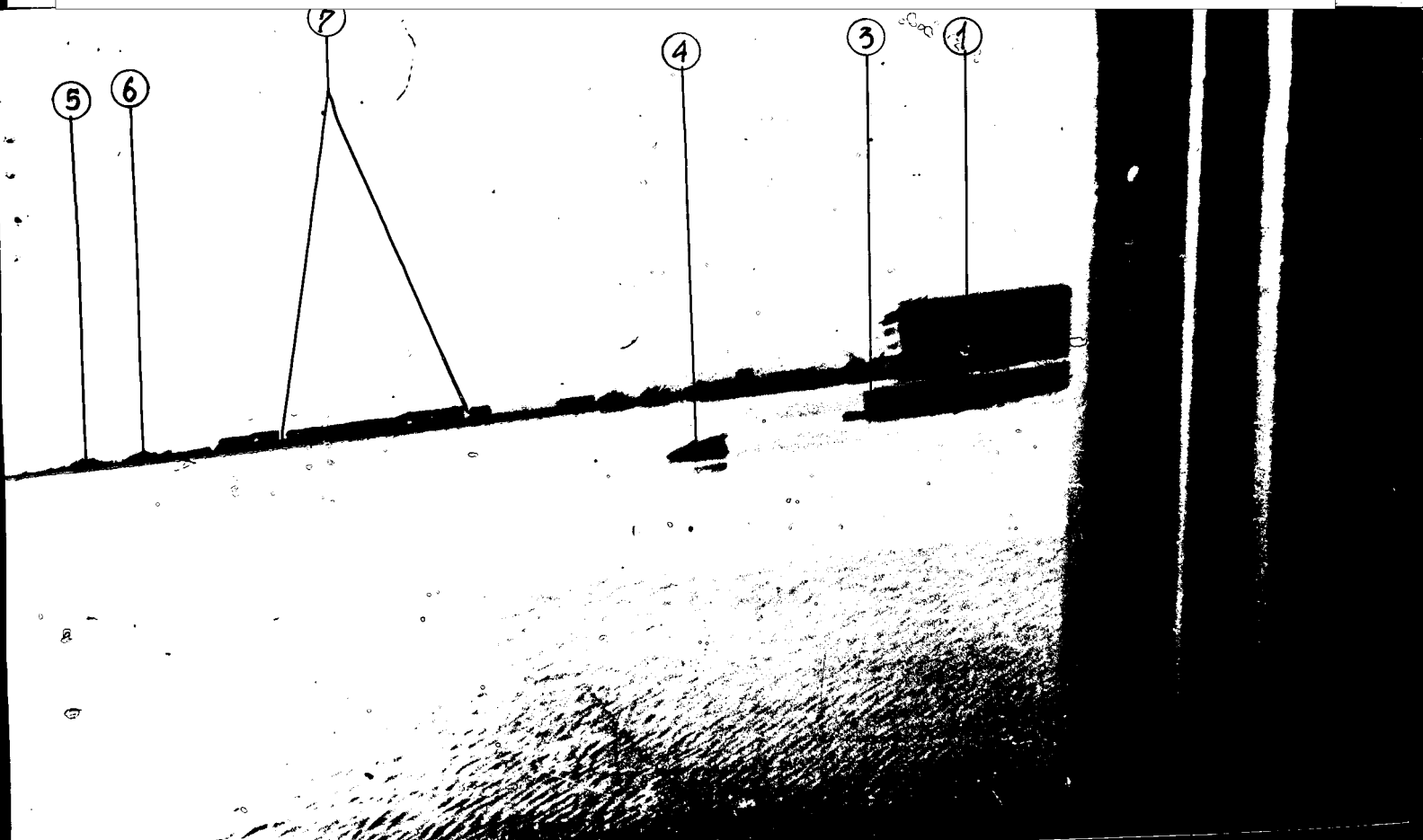


25X1

Approved For Release 2008/12/02 : CIA-RDP83-00418R003900410001-2

BULGARIA BL Approved For Release 2008/12/02 : CIA-RDP83-00418R003900410001-2  
NORTHWEST SIDE OF PORT. 1. NAVAL SERVICES BUILDING 3. 60-70 METER PIER  
(UNDER CONSTRUCTION) IN CENTER OF PORT. BEGINS AT NORTH QUAY AND GOES  
SOUTH 4. BUOY MARKING SITE OF ROCKS TO BE USED IN PIER CONSTRUCTION  
5. NAVAL UNITS AT PERMANENT ANCHORAGE 6. SOUTHWEST BREAKWATER. OCT. 1955.

25X1

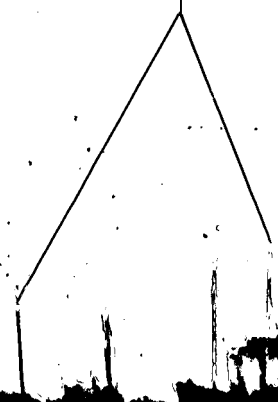


BULGARIA BURGAS BURGAS 42 30 N 27 30 E  
NORTHWEST SIDE OF PORT. 1. NAVAL SERVICES BUILDING 2. OIL-DRIVEN VESSELS.

25X1

② ①

25X1



25X1

**Page Denied**

SECRET

25X1

25X1

F' ANASTASIA ISLAND

SECRET

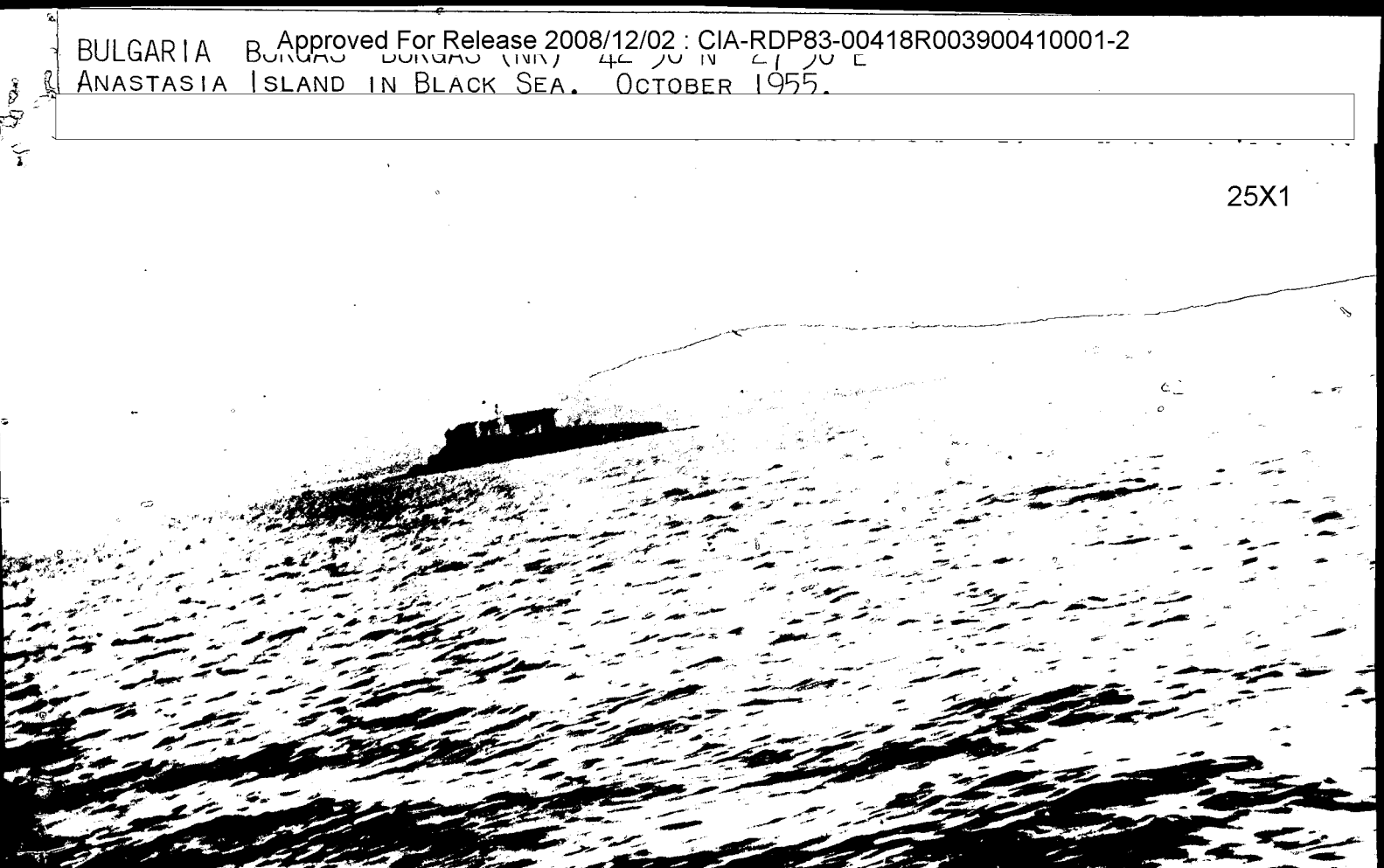
25X1

25X1



BULGARIA BULGARIA (IN) 44 30 IN 21 30 E  
ANASTASIA ISLAND IN BLACK SEA. OCTOBER 1955.

25X1



25X1

**Page Denied**

SECRET

25X1

25X1

G. HEGALONISI ISLAND

25X1

25X1

Approved For Release 2008/12/02 : CIA-RDP83-00418R003900410001-2  
BULGARIA BURGAS BURGAS (NR) 42 30 N 27 30 E  
MEGALONISI ISLAND IN BLACK SEA OCTOBER 1955

25X1



Approved For Release 2008/12/02 : CIA-RDP83-00418R003900410001-2

25X1

**Page Denied**

Next 2 Page(s) In Document Denied

SECRET

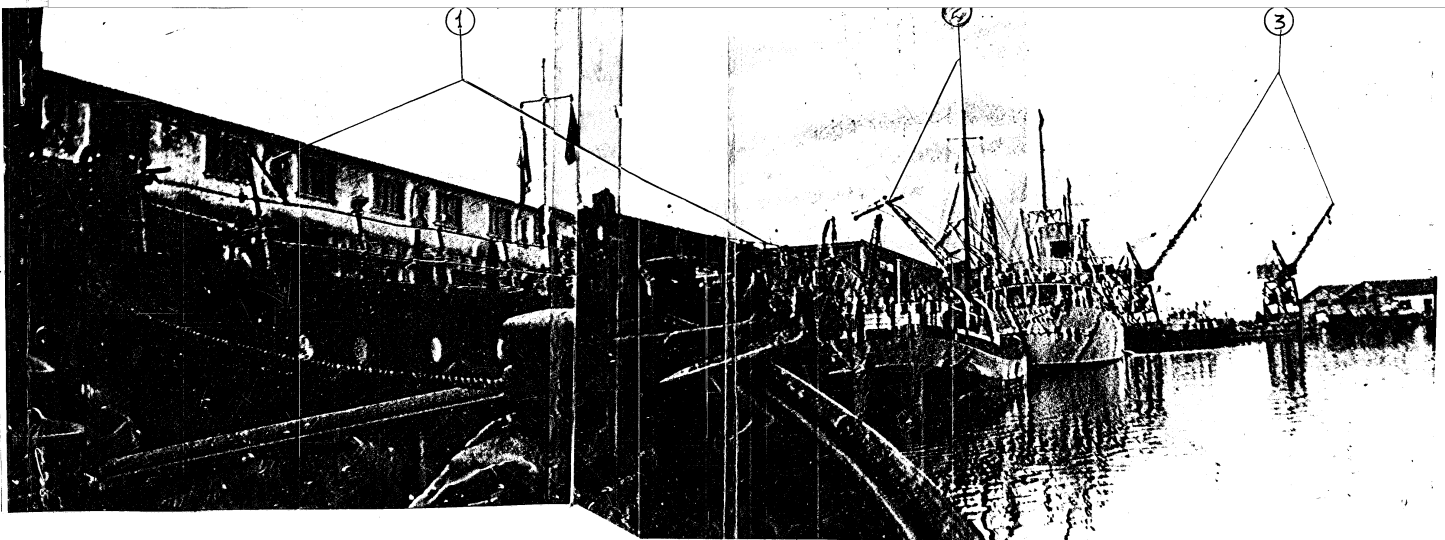
25X1

'A' VIEW OF NORTHERN DOCK

BULGARIA BURGAS BURGAS 42 30 N 27 30 E  
NORTHERN DOCK. 1. DEPOTS.

BULGARIA BURGAS BURGAS 43 30 N 27 30 E  
NORTHERN DOCK. 2. CRANES. 3. 2 CRANES ON NORTHEAST DOCK.

25X1



THE  
DEPOTS ON NORTHERN DOCK  
CRANES ON NORTHERN DOCK  
TWO CRANES ON NORTH-  
EAST DOCK

SECRET

25X1

25X1

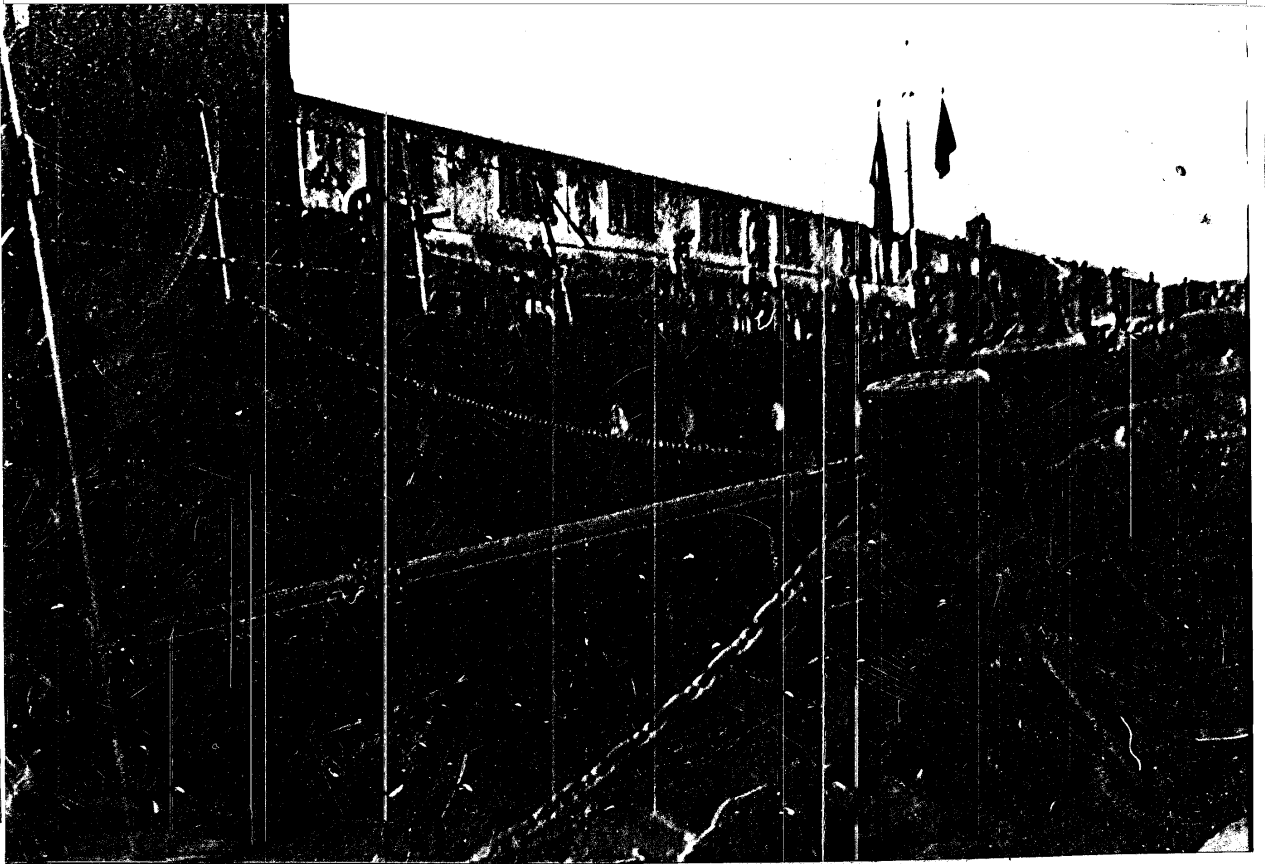
SECRET

25X1

'B'. DEPOTS ON NORTHERN DOCK.

25X1

BULGARIA BURGAS BURGAS 42 30 N 27 30 E  
DEPOTS ON NORTHERN DOCK.



SECRET

25X1

SECRET

25X1

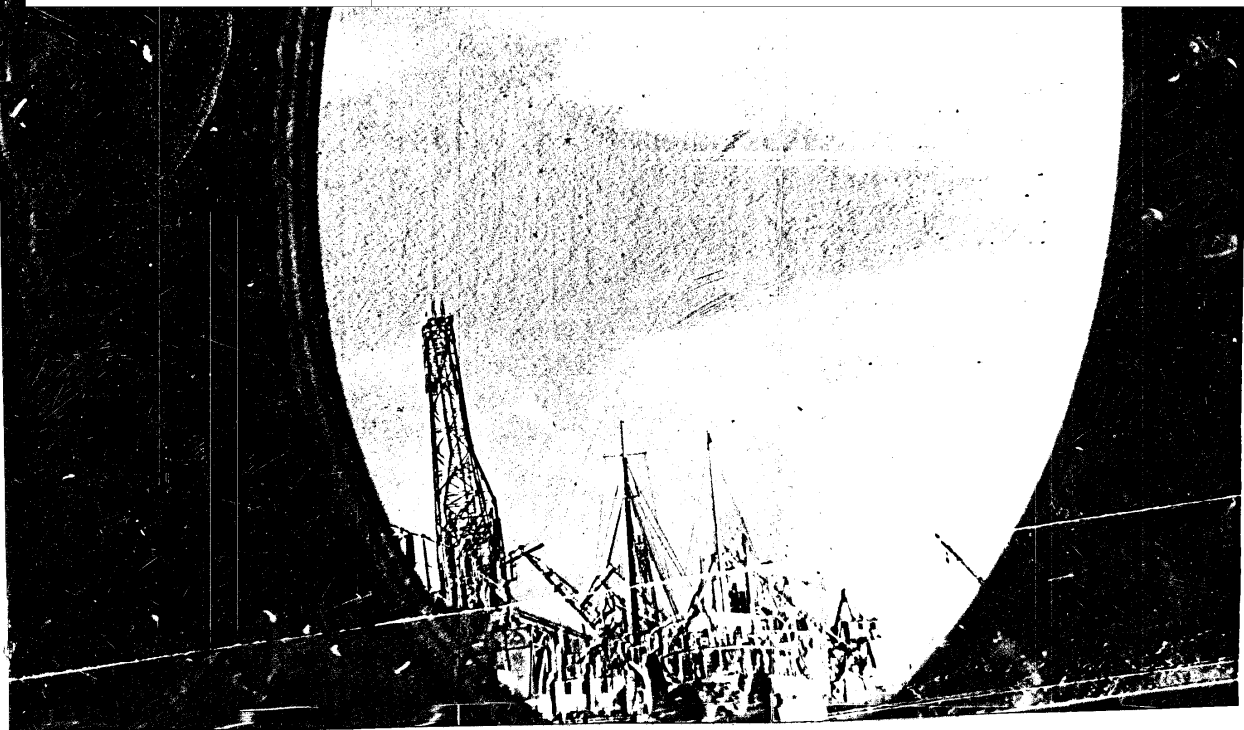
25X1

'C' CRANES ON NORTHERN DOCK.

BULGARIA BURGAS BURGAS 42 30 N 27 30 E  
CRANES ON NORTHERN DOCK.

25X1

25X1



25X1

SECRET

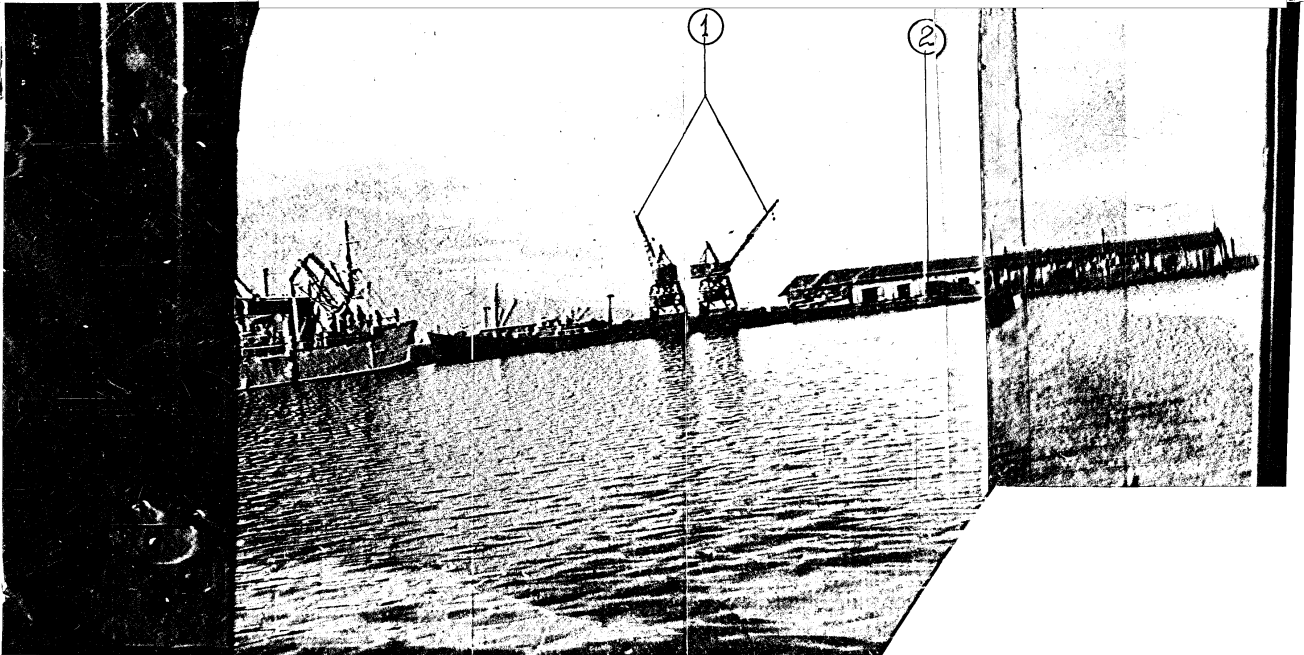
25X1



SECRET

'D' VIEW OF NORTH-EAST DOCK

BULGARIA BURGAS BURGAS 42 30 N 27 30 E  
NORTHEAST DOCK 1. ELECTRIC CRANES 2. WAREHOUSES. 15-30 OCTOBER 1955.



1. Two electric cranes moving along the dock
2. Two warehouses

SECRET

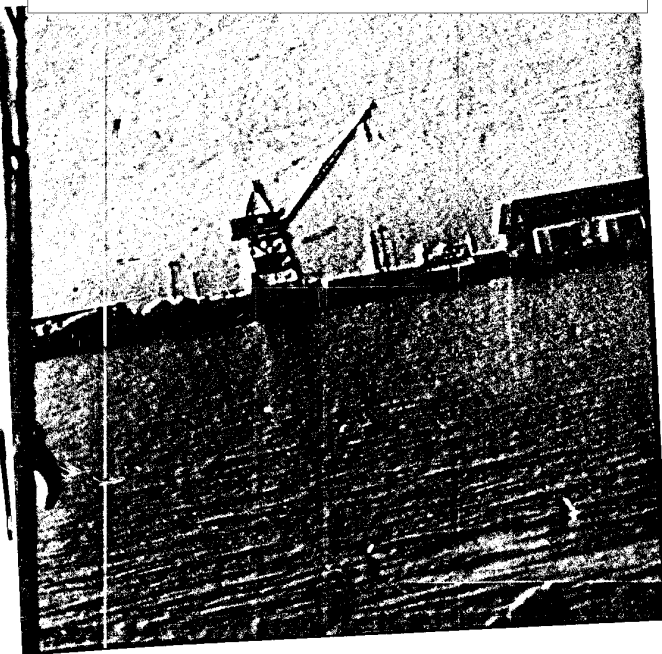
25X1

25X1

"E" CRANES ON NORTH-EAST DOCK

BULGARIA BURGAS BURGAS 42 30 N 27 30 E  
CRANES ON NORTH-EAST DOCK. 15-30 OCTOBER

25X1



SECRET

25X1

25X1

25X1

**Page Denied**