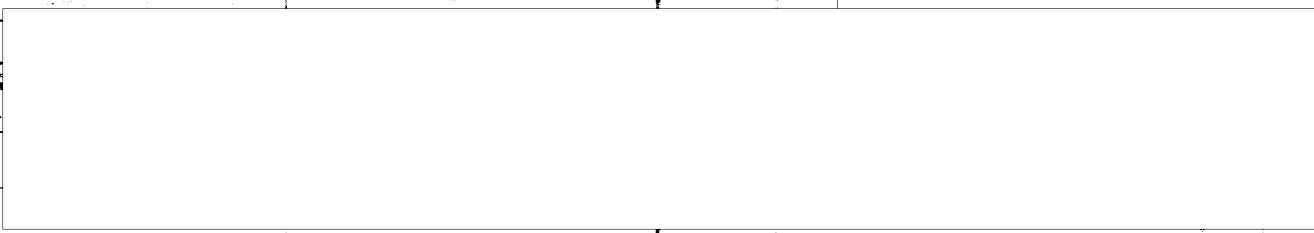


SECRET

U. S. OFFICIALS
SECURITY INFORMATION

SECRET



ATTACHMENTS 1 sheet

50X1-HUM

A) LAND FORCES

#) Russian Forces

50X1-HUM

a) Depots

50X1-HUM



Underground ammunition depot BRAILA



Located about 6 km southwest of

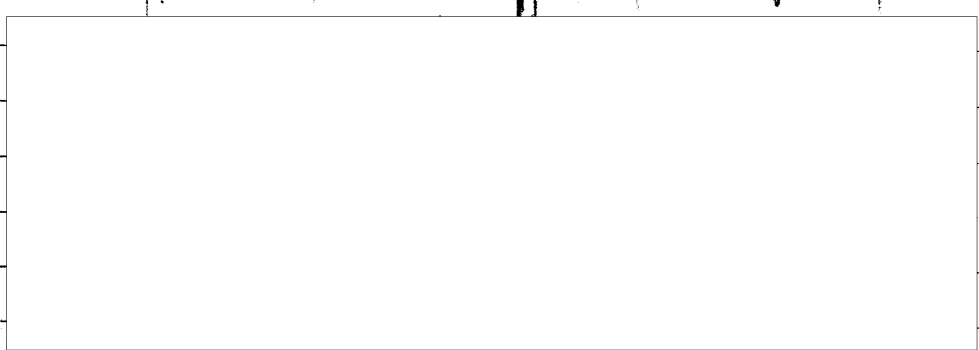
50X1-HUM

Braila in a wooded area between

the railroad and the road to Bucharest.

The depot, guarded by Russian sentries,

is surrounded by a wire fence.



50X1-HUM

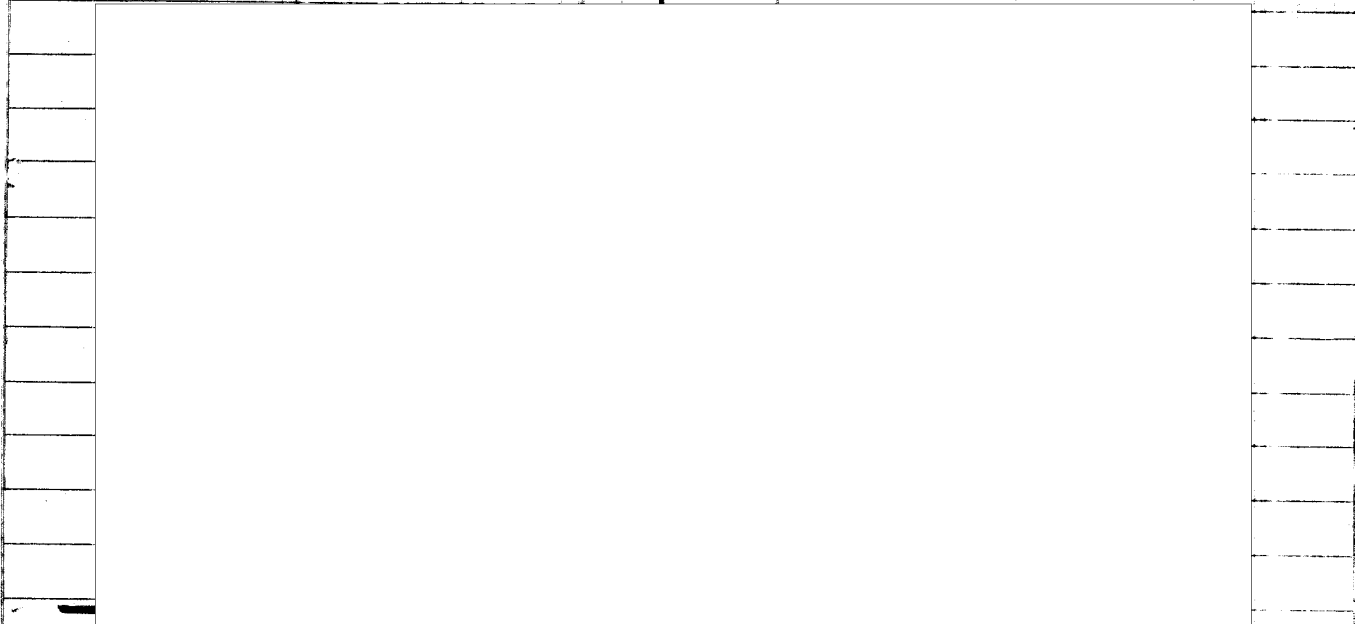
SECRET

U. S. OFFICIALS ONLY

①

SECRET
U. S. OFFICIALS ONLY

50X1-HUM



Open air fuel dump in BRILA

located about 500 m south of
the sports arena and about 200 m
west of the Normal School of Braila.

The dump is surrounded by a wire fence
about 250 m long on all sides

The fuel is contained in 200-liter
drums, stacked up.

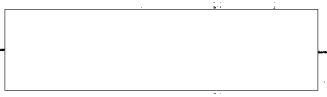
B) AVIATION

50X1-HUM

✓
IANCA

1) Air part of

JANCA



SECRET
U. S. OFFICIALS ONLY

50X1-HUM

SECRET**U. S. OFFICIALS ONLY**

2-3

General information

Newly installed airport

50X1-HUM

Work was begun in the spring of 1949 under management of "Sov. on Construction" with Russian managers, technical engineers, etc., and Rumanian workmen.

In September-October 1950, to speed up the work, a large number of prisoners, who had been assigned to work on the Danube-Black Sea Canal, were sent to the airport.

The total number now employed is not known.

Location

Directly north of the outskirts of Tanca.

Dimensions: unknown.

Hangers

(3)

SECRET**U. S. OFFICIALS ONLY**

U. S. OFFICIALS ONLY

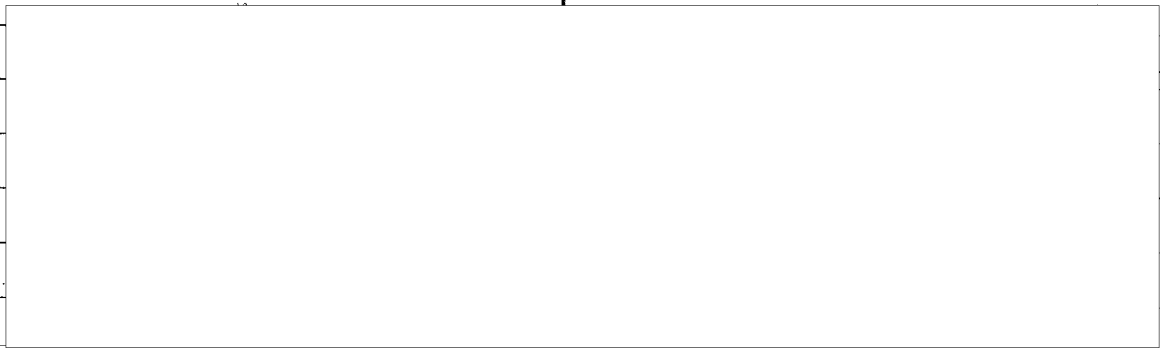
3-4

An undetermined number of underground hangars is being built. The area in which they will stand is covered with thick vegetation.

Miscellaneous

No further details available.

50X1-HUM



not even those who

work there can get any general idea

on the number, location, etc. of the hangars

or other ^{airport} equipment, because every workman

works at just one fixed point and is not

allowed to move around.

50X1-HUM

SECRET

U. S. OFFICIALS ONLY

SECRET

U. S. OFFICIALS ONLY

4-5

50X1-HUM

(C) INDUSTRIES

50X1-HUM

a) Navy Yard.

50X1-HUM

The May First Navy Yard (formerly Sovrom BRAILA

Top 17

Transport) under Russian control,

50X1-HUM

Organization:

50X1-HUM

General Manager: Codreanu

Assistant Manager (Vito Focner)

Chief engineer: Meliseatos

SECRET

U. S. OFFICIALS ONLY

SECRET

U. S. OFFICIALS ONLY

[Redacted]

5-6

50X1-HUM

Yard Chief: Engineer Timaru

Chief, Research and Drafting Office: Engineer Vagner

50X1-HUM

Chief, Planning Office: Engineer Melasa

Chief, Ship Repair Section: Engineer Manole, Kusnarian

50X1-HUM

Chief, Production Unit: Engineer Carbunaro

[Redacted]

[Large Redacted Area]

Personnel

About 1,800 persons

[Redacted]

(E)

SECRET

U. S. OFFICIALS ONLY

RECORDS

U. S. OFFICIALS ONLY

50X1-HUM

[Redacted]

work at the yard. Until the

end of 1950 the partisans were assigned exclusively to hard work.

At the beginning of 1950 they were assigned to ~~different~~ various units.

Work shifts

[Redacted]

there was only one

50X1-HUM

8-hour shift from 0700 to 1500. Since

[Redacted]

two shifts ^{have} been introduced;

50X1-HUM

- from 0700 to 1500 and

- from 1500 to 2300,

because of an anticipated rise in output.

Commission for the Inspection and Testing of Production

A Russian Commission with 3 members inspects and tests the Yard production.

(5)

SECRET

U. S. OFFICIALS ONLY

SECRET**U. S. OFFICIALS ONLY**

6-7

Only one of the three is in permanent residence at the Yard; the whole Commission meets only occasionally when tests are run.

Management - Offices and Units.

(The numbers correspond to those in the sketch, Attachment No 1)

1) - Management and Offices

Square 1-story building, about 20 x 20 m.

2) - Offices - Garage

1-story ^{masonry} ~~brick~~ building, about 100 x 7 m,

divided into 3 sections:

a-a) offices

b) garage

3) Offices and Drafting Room

1-story building, about 70 x 15 m,

divided into 2 sections

SECRET**U. S. OFFICIALS ONLY**

SECRET
U. S. OFFICIALS ONLY

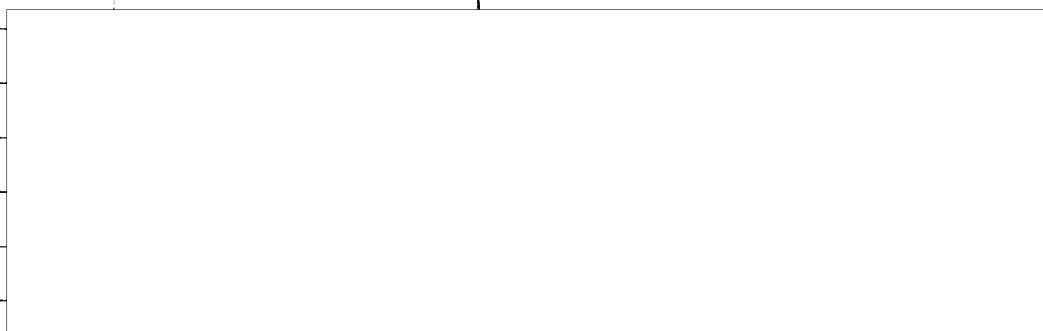
7-8

a) offices

b) drafting room

4) - Officers and apprentice school

4 2-story buildings, ^{of} undetermined dimensions.



50X1-HUM

5) Covered wharf.

Reinforced concrete building with

an arched roof, about 100 x 30 m. Con-

nectat with it there is a wooden building

of the same size.

- 20 fishing boats can be moored here

at the same time.

6) Machine shop

1-story building, maximum dimensions 35 x 30 m

7) ?

(9)

SECRET

U. S. OFFICIALS ONLY

SECRET
U. S. OFFICIALS ONLY

7) Smithy

Masonry building, about 10' x 15' m

8) - Carpentry shop

Wooden building, about 30 x 8 m

9) - Boiler shop

Reinforced concrete building, about 70 x 15' m

10) - Units

- boiler-makers

- a depot for miscellaneous material

- hydraulic engineers

are in a 1-story building, about

70 x 20 m, divided into 4 sections:

a - boiler-makers' unit

b - depots for miscellaneous material

for ship fittings

c - water works section

11) - Varnishing shop

10)

SECRET**U. S. OFFICIALS ONLY**

SECRET
U. S. OFFICIALS ONLY

9-10

1-story building, about 20 x 8 m

12) - Warehouse for materials

Wooden building, extension of

building No 2, about 40 x 10 m,

used for storing materials

13) - Steam-electric power plant.

Located in a 15 m square, 1-story building.

Has 2 250-hp Diesel engines ~~of~~

~~of~~ Skoda make.

The plant is connected by an underground passage to the centrifugal pumping plant

(No 14) from which it gets water to cool the engines.

14) - Centrifugal pumping plant to

cool the electric power plant ~~engines~~ (No 13)

(1)

SECRET**U. S. OFFICIALS ONLY**

SECRET

U. S. OFFICIALS ONLY

10

15) - Fuel dump

Reinforced concrete building, about
30x15 m. divided into 3 sections. The
fuel is contained in an undetermined number
of 3,000-liter, metal tanks

16) - Underground fuel dump

consisting of 2 buried ~~in~~ cylindrical tanks,
~~tanks~~ capacity 8 carloads each.

A low wall about 30 cm ^{high} surrounds

the area under which the ~~two~~ tanks
are located.

17) Compressor station

A wooden building, about 12x10 m.

containing 1 compressor, capacity 3 cu m
per minute

A second compressor with a capacity of

(13)

SECRET

U. S. OFFICIALS ONLY

SECRET**U. S. OFFICIALS ONLY**

10-11

15 cu. m. per minute is expected from
the industrial establishments of Recita

50X1-HUM

18) - Compressor Station

Masonry building, about 15 x 12 m with:

- 3 compressors, capacity 3 cu m per minute.

- 1 mobile compressor, capacity 10 cu m per minute

19) Compressed air tanks

Capacity 15 cu m each.

The 2 tanks are connected by underground
pipes.

20) - Fire house

A pump, operated by an electric

motor, is installed here to draw

water from the Danube in case of fire.

Delivery: about 20 cu m per minute.

19)

SECRET**U. S. OFFICIALS ONLY**

SECRET

U. S. OFFICIALS ONLY

11-12

21) - Firemen's depot

New building, finished in the fall of 1950.

Dimensions: about 10 x 7 m.

All fire extinguishing supplies for the yard are kept here.

22) - Workmen's mess hall

Wood and masonry building, about 25 x 8 m.

23) - Workmen's mess hall

A new building, unfinished. Its opening

is expected on 1 July 1951

Crane

The yard has only one crane, lifting power

3,000 kg, mounted on a ^{motor} truck.Motor vehicles

The yard has 4 motor trucks (2 Fiat, 1 Dodge

and one of unidentified make) and 2 motorcycles.

SECRET

U. S. OFFICIALS ONLY

(14)

SECRET

U. S. OFFICIALS ONLY

12-13

Railroad siding

A siding of undetermined length, connects the yard with the railroad.

Yard boundaries

The yard is bounded:

- on the north by buildings
- on the west by a wire fence
- on the south by the Danube
- on the east partly by a wall and partly by a wire fence.

Production

For the Rumanian Navy

The yard was engaged in converting a lighter into a river training ship

50X1-HUM

[Redacted]

Some time in

50X1-HUM

the early months of this year work was

15

SECRET

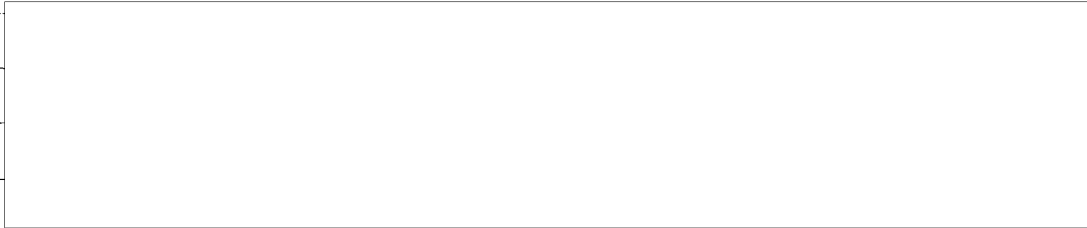
U. S. OFFICIALS ONLY

SECRET

U. S. OFFICIALS ONLY

13-14

suspended and the ship was transferred
to an unknown locality.



50X1-HUM

For the river merchant marine,

From 1948 to 1950 inclusive;

- 55 (approximate) wooden fishing boats:

Description:

- length - 20-22 m

- width - 4-6 "

- height - 2.50 "

- 1 250-hp motor

50X1-HUM



- 16 tankers

- 3 cargo lighters.

50X1-HUM



SECRET

U. S. OFFICIALS ONLY

SECRET

U. S. OFFICIALS ONLY

14-

Under construction in June 1951

- 8 wooden fishing boats

- 4 tankers

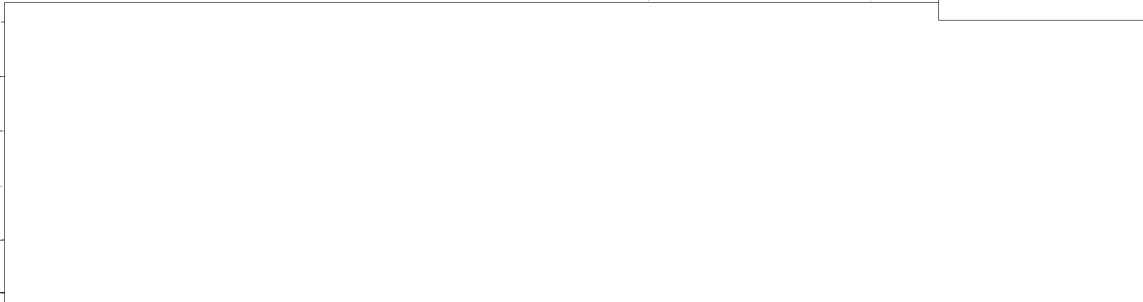
- 4 dredgers for the Danube-Black Sea Canal

No particulars available

Note - For particulars on these fishing

boats and tankers, see above.

50X1-HUM



"Stanca" Cement Works - - - BRAILA ←

Located close to the "I May" Yard

(for exact location see sketch, Attachment

1, No 24).

It comprises:

- Management and Offices

SECRET

U. S. OFFICIALS ONLY

17

SECRET

U. S. OFFICIALS ONLY

14-15

2-story building, about 30 x 8 m.

- Cement works ←

Reinforced concrete building, about 120 x 120 m.

- Warehouse

Reinforced concrete building, about 40 x 15 m.

- Railroad siding

The works are connected with the railroad by a single-track siding.

- Workers: about 600

- Shifts: 3 8-hour shifts

- Production: Portland cement, standard type ^{and} quick-setting.

- Unit of output: 36 car loads per 24 hours.

- Destination of output.

The output is sent partly to the USSR.

and partly to the Tanca airport (see paragraph on Aviation)

SECRET

(8)

U. S. OFFICIALS ONLY

U. S. OFFICIALS ONLY16Raw material depot

Directly south of the cement works there

is a stone and earthwork depot (No 25,

Attachment No 1) which ~~extends~~ ^{as far as} ~~to~~ the Danube.

At the northern edge of the depot along a

ridge separating the depot from the cement

works there is a Decauville railroad with

several sidings running to the shore of the

Danube.

Stone and dirt are transported to the cement

works by ~~the~~ hoists on which the decauville

~~car~~ ^{car} is placed.

Stone is brought from the Cernavoda quarries

to the depot by river.

50X1-HUM

SECRET**U. S. OFFICIALS ONLY**

SECRET

U. S. OFFICIALS ONLY

50X1-HUM

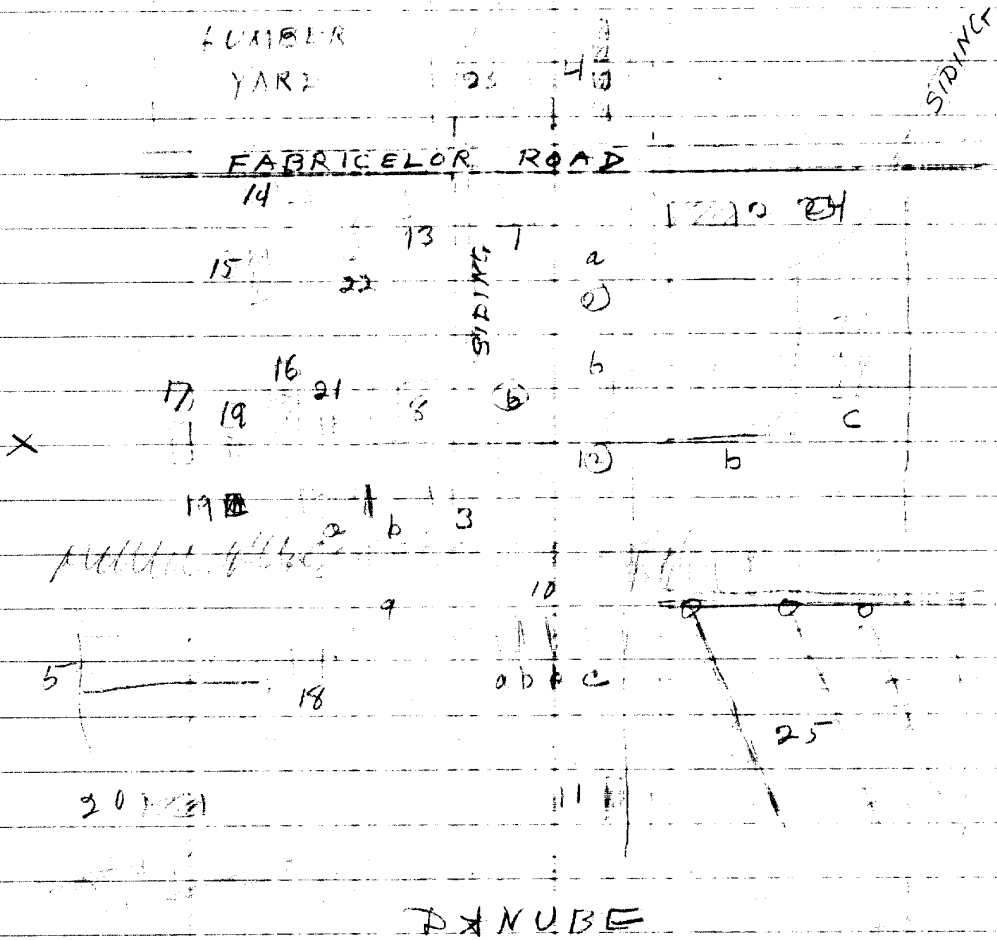
ATTACHMENT No 1

STANCA
NAVY YARD and CEMENT WORKS

←
50X1-HUM

BRAILA (ROMANIA)

50X1-HUM



Sketch is not in scale

LEGEND

TYPE

↓ D Management and Offices

SECRET

(20)

U. S. OFFICIALS ONLY

SECRET

U. S. OFFICIALS ONLY

- 2) Offices and garage
 - a) offices
 - b) garage
- 3) Offices and drafting room
 - a) offices
 - b) drafting room
- 4) Offices and apprentice school
- 5) Covered wharf
- 6) Machine shop
- 7) Smithy
- 8) Carpentry shop
- 9) Boiler shop
- 10) Boiler shop - depots - hydraulic unit
 - a) boiler-makers
 - b) depots for miscellaneous supplies
 - c) hydraulic engineers' unit
- 11) Paint shop
- 12) Supply depot
- 13) Heating and electric power plant
- 14) Centrifugal pump plant

SECRET

(21)

U. S. OFFICIALS ONLY

SECRET

U. S. OFFICIALS ONLY

✓ 15) Fuel dump

16) Underground fuel dump

17) Compressor plant

18) Compressor plant

19) Compressor air bottles

✓ 20) Fire house

21) Fire engine house

22) Workmen's mess

23) Workmen's mess (new building)

24) Stanca Cement Works

a) Management and offices

b) Cement works

c) Warehouse

25) Outdoor stone and dirt depot for the cement works.

END

(22)

SECRET

U. S. OFFICIALS ONLY