

25X1

Approved For Release 2006/03/10 : CIA-RDP82M00097R001900010008-3

Approved For Release 2006/03/10 : CIA-RDP82M00097R001900010008-3

TOP SECRET

Approved For Release 2006/03/10 : CIA-RDP82M00097R001900010008-3

25X1

25X1



Copy No. 64 of 78



25X1

USIB-D-41.18/117
(COMOR-D-25/177-71)
29 November 1966
Limited Distribution

UNITED STATES INTELLIGENCE BOARD

MEMORANDUM FOR THE UNITED STATES INTELLIGENCE BOARD

SUBJECT : South China/North Vietnam and Sino-Indian Border
Photographic Reconnaissance, 22 - 28 November 1966

- REFERENCES:
- a. USIB-D-41.14/223 (COMOR-D-25/144) Para. 12.b.
5 March 1965, Limited Distribution
 - b. USIB-D-41.14/283 (COMOR-D-25/207) 4 March 1966,
and Memorandum to Holders dated 8 March 1966,
Special Limited Distribution
 - c. USIB-D-41.14/288 (COMOR-D-25/212)
17 March 1966, Special Limited Distribution

1. The attached report on the subject by the Chairman, Committee on Overhead Reconnaissance (COMOR), is circulated for the information of the United States Intelligence Board (USIB).

2. It is not contemplated that the attached report will be placed on the USIB agenda unless a USIB Principal so requests prior to the close of business on Friday, 2 December 1966. In the absence of such a request, it will be considered for record purposes that USIB "noted" the subject report on that date.

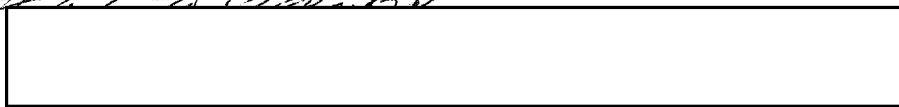
25X1

*No requests received.
Recorded in USIB-M-457
8 Dec 1966
Secretary's Note
Attachments
#11 to Comorb*



Executive Secretary

25X1



GROUP 1
Excluded from automatic
downgrading and
declassification

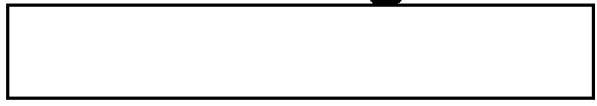
TOP SECRET

CENTRAL INTELLIGENCE AGENCY OFFICIAL ROUTING SLIP			
TO	NAME AND ADDRESS	DATE	INITIALS
1	EA/DCI		<i>ck</i>
2	Chairman, USIB		<i>DCI/ck</i>
3	ExSec/USIB		
4			
5			
6			
	ACTION	DIRECT REPLY	PREPARE REPLY
	APPROVAL	DISPATCH	RECOMMENDATION
	COMMENT	FILE	RETURN
	CONCURRENCE	INFORMATION	SIGNATURE
Remarks:			
<p>Attached is the weekly COMOR report on photographic reconnaissance of South China/ North Vietnam and the Sino-Indian border, which is being circulated to the USIB for information.</p> <p>Unless you or another member so request, the report will not be discussed at a meeting, and will be recorded as having been noted by the Board.</p>			
FOLD HERE TO RETURN TO SENDER			
FROM: NAME, ADDRESS AND PHONE NO.			DATE
<div style="border: 1px solid black; width: 100%; height: 20px;"></div> <p>ExSec/USIB</p>			30 Nov

25X1

~~TOP SECRET~~

25X1



USIB-D-41.18/117
(COMOR-D-25/177-71)
29 November 1966
Limited Distribution

Report to the United States Intelligence Board
by
Chairman, COMOR
on
South China/North Vietnam and Sino-Indian Border
Photographic Reconnaissance
22-28 November 1966

1. The following is a report on photographic coverage of:
 - a. 168 priority targets in South China and North Vietnam;
 - b. Targets in Laos adjacent to the South China border;
 - c. Targets in the Sino-Indian border area.

South China/North Vietnam

2. A BLUE SPRINGS and a [redacted] mission were flown against 25X1
 priority targets in North Vietnam during the reporting period. The BLUE
 SPRINGS mission [redacted] was over the Hanoi area, but readout is
 not yet available. According to field reporting, the [redacted] mission on 25X1
 [redacted] covered the Haiphong/Kien An and Cat Bi Airfields.

3. Six [redacted] missions flown in a previous reporting period
 acquired surveillance coverage of four priority targets in North Vietnam.
 No base line coverage was reported during this reporting period.

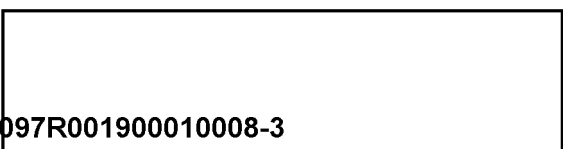
4. Tab A lists the 118 of 168 priority targets in South China and
 North Vietnam now covered by base line photography and shows total
 coverage as follows:

Column 4 - Base line coverage since 1 March 1966, shown
 by date.

Column 5 - The number of times surveillance coverage has
 been added to the base line photography.

Column 6 - Date of the most recent base line/surveillance 25X1
 quality coverage.

~~TOP SECRET~~



25X1



USIB-D-41.18/117
(COMOR-D-25/177-71)
29 November 1966
Limited Distribution

The map at Tab B shows the distribution of the 168 targets illustrating the primary area for lines of communication by shading. The 118 targets listed in Tab A which have been covered by base line quality photography since 1 March 1966 are shown by a black dot, the remainder of the 168 by a black circle. Arrows indicate base line/surveillance coverage added during the reporting period -- for the actual date of the photography see underlining in Tab A.

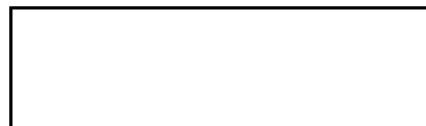
Laos Adjacent to the South China Border

5. None

Sino-Indian Border Area

6. None

7. The map at Tab C shows both high and low resolution coverage of targets in this area obtained since 1 November 1966.



25X1

Chairman

Committee on Overhead Reconnaissance

Attachments:

Tabs A, B, and C

25X1



25X1



Targets on which Satisfactory Base Line/Surveillance* Coverage
has been Reported since 1 March 1966

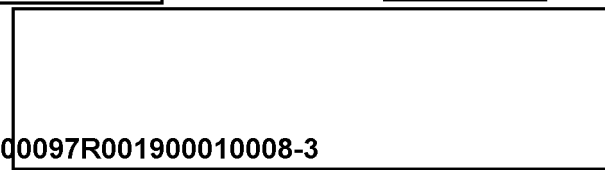
25X1



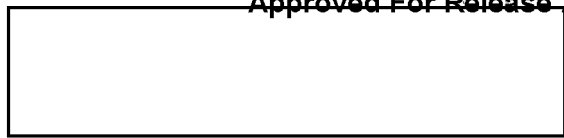
<u>Target Name</u>	<u>Ctry</u>	<u>Base Line Since 1 March</u>	<u>Surveillance Added to Base Line</u>	<u>Most Recent Coverage</u>
An Shun Airfield, U/C	Ch		1	
Chan Chiang Afld (Ft. Bayard)	Ch		0	
Hai Kou Airfield	Ch		1	
Hsin Cheng Airfield	Ch		0	
Hsing Ning Airfield	Ch		0	
Kuang Chou/Pai Yun Airfield	Ch		3	
Lei Yang Airfield	Ch		0	
Lien Cheng Airfield	Ch		0	
Ling Shui Airfield	Ch		1	
Liu Chou Airfield	Ch		0	
Meng Tzu Airfield, West	Ch		0	
Pao Shan Airfield	Ch		0	
Ssu Mao Airfield, North	Ch		1	
Pei Tun Airfield	Ch		0	
Yun Nan I Airfield	Ch		0	
Haiphong/Cat Bi Airfield	VN		6	
Haiphong/Kien An Airfield	VN		2	
Hanoi/Bac Mai Airfield	VN		2	
Hanoi/Gia Lam Airfield	VN		5	
Phuc Yen Airfield	VN		2	
Lang Son Airfield	VN		2	
Nan Ning Airfield, South	Ch		0	
Kun Ming Airfield	Ch		2	
Swatow A/F, NE (Shan Tou)	Ch		3	
Kep Airfield	VN		3	
Yai Hsien A/F (San Ya)	Ch		1	
Tien Yang Airfield	Ch		2	
<u>Yen Bai Suspect Afld (U/C)</u>	VN		14	
Hsu Pu Airfield, U/C	Ch		0	
Son Tay Suspect Airfield	VN		7	
<u>Bai Thuong Airfield</u>	VN		13	
Tsam Kong Naval Base (Chan Chiang)	Ch		1	
Yu Lin Naval Base	Ch		0	

25X1

X1



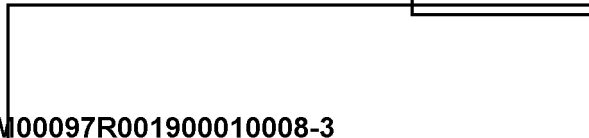
25X1



USIB-D-41.18/117
(COMOR-D-25/177-71)
29 November 1966
Limited Distribution

25X1

<u>Target Name</u>	<u>Ctry</u>	<u>Base Line Since 1 March</u>	<u>Surveillance Added to Base Line</u>	<u>Most Recent 25X1 Coverage</u>
Hai Kou Naval Base	Ch		2	
Shan Tou Naval Base	Ch		2	
Huang Pu Naval Base	Ch		0	
Pei Hai Naval Facility	Ch		0	
Hai Men Shipyard (Shan Tou)	Ch		0	
Haiphong Port Complex	VN		4	
Cam Pha Port Facilities	VN		11	
Hon Gay Port Facilities	VN		12	
Vinh/Ben Thuy Port Facilities	VN		30	
An Shun Susp Military Activity	Ch		1	
Shao Kuan Army Barracks Area	Ch		0	
Chang Ning/Hsin Hsu Army Bks, N	Ch		0	
Chang Chi Barracks Area	Ch		1	
Chao An Army Bks, N. W.	Ch		0	
Che Chiang Army Bks, S. E.	Ch		1	
Che Li Military Activity	Ch		0	
Che Tien Army Bks, South	Ch		0	
Che Kung Storage Area	Ch		0	
Chu Chou Ammunition Depot	Ch		1	
Chu Hsiung Military Area	Ch		0	
Heng Yang Ammo Depot, ENE	Ch		2	
Hsia Kuan Bks & Hq 42 Inf Division	Ch		2	
Huang Pu Army Supply Depot, E	Ch		0	
Hui Yang Training Area	Ch		0	
I Liang Army Bks, South #1	Ch		0	
Kai Yuan - Hq 13th Army	Ch		0	
Kan Chou Army Bks, S. W.	Ch		1	
Keng Ma Army Barracks	Ch		0	
Keng Wei Army Barracks, North	Ch		0	
Kuang Chou Military Storage Area	Ch		1	
Kuang Chou Storage, Sha Ho, NW	Ch		1	
Kuei Hsien Army Barracks	Ch		0	
Kuei Yang Army Barracks, S.	Ch		2	
Kuei Yang Storage Depot	Ch		2	
Kun Ming General Supply Depot	Ch		2	
Kun Ming Storage Area, SE	Ch		2	25X1



25X1

Approved For Release 2006/03/10 : CIA-RDP82M00097R001900010008-3

~~TOP SECRET~~

USIB-D-41. 18/117

(COMOR-D-25/177-71)

29 November 1966

Limited Distribution

25X1

<u>Target Name</u>	<u>Ctry</u>	<u>Base Line Since 1 March</u>	<u>Surveillance Added to Base Line</u>	<u>Most Recent Coverage</u>
Lei Yang Army Barracks, WSW	Ch		1	5X1
Lung Men Ammunition Depot	Ch		0	
Lung Men Military Activity	Ch		0	
Mang Shih Army Bks, S (Lu Hsi)	Ch		2	
Meng La Army Bks, West	Ch		1	
Meng Pan Military Camp	Ch		0	
Mi Tu Army Bks & Sp (Hsin Cheng)	Ch		0	
Ping Hsiang Ordnance Depot	Ch		1	
Po Hsi Chieh Army Bks (Pan Chi)	Ch		0	
Pu Erh Military Bks (Ning Erh)	Ch		0	
Pu Ning Army Barracks	Ch		0	
Shan Tou Army Bks (Lien Tang)	Ch		0	
Shu Chang Supply Depot (Hai Kou)	Ch		2	
Shuang Chiang Army Barracks	Ch		0	
Ssu Mao Military Area	Ch		0	
Ta Li Hq 14th Army	Ch		1	
Tang Chia Mil Install (Chung Shan)	Ch		0	
Teng Chun Army Bks, W	Ch		0	
Tsao Wu Storage Area	Ch		1	
Yung Ping Army Barracks	Ch		0	
Wen Shan Army Barracks, West	Ch		1	
Ho Kou Military Camp	Ch		1	
Chiu Weng Yuan Army Bks, SW	Ch		0	
I Chun Prob Military Bks Area	Ch		0	
Chu Tien Military Installation	Ch		0	
Lao Chiang Poss Military Areas	Ch		0	
Fan Cheng Army Barracks	Ch		0	
Yen Shan Mil Bks & Storage Area	Ch		0	
Lung Tang Army Bks, Tien Tun Yuan	Ch		0	
Hai Feng Military Complex	Ch		0	
Tien Yang Poss Military Installation	Ch		0	
Lu Liang Storage Area	Ch		1	
Hanoi Lao Cai RR, Segment 2	VN		1	
Hanoi Lao Cai RR, Segment 1	VN		1	
Hanoi Lao Cai RR, Segment 3	VN		1	
Hanoi Ping Hsiang RR, Segment 2	VN		2	5X1

Approved For Release 2006/03/10 : CIA-RDP82M00097R001900010008-3

~~TOP SECRET~~

25X1

Approved For Release 2006/03/10 : CIA-RDP82M00097R001900010008-3



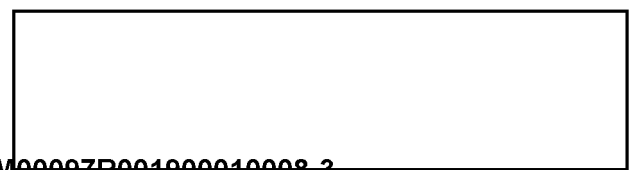
USIB-D-41.18/117
(COMOR-D-25/177-71)
29 November 1966
Limited Distribution

25X1

<u>Target Name</u>	<u>Ctry</u>	<u>Base Line Since 1 March</u>	<u>Surveillance Added to Base Line</u>	<u>Most Recent 25X1 Coverage</u>
Hanoi Ping Hsiang RR, Segment 1	VN		1	
Kep/Than Nguyen RR, U/C	VN		0	
Hanoi Ping Hsiang RR, Segment 4	Ch		1	
Kun Ming Complex	Ch		1	
Ping Hsiang Complex	Ch		2	
Dong Dang Complex	VN		1	
Phu Lang Thuong Complex	VN		6	
Liu Chou Complex	Ch		0	
Shan Tou Complex (Swatow)	Ch		1	
Tien Yen Complex	VN		1	
Binh Lu Complex	VN		0	
Lao Cai Railroad Yard	VN		2	

*Base Line photography must provide complete coverage of the objective adequate to determine OB status, while subsequent Surveillance must be adequate to detect changes.

25X1



Next 1 Page(s) In Document Exempt