

00D

FEB 1952 01-4AA

CENTRAL INTELLIGENCE AGENCY

50X1-HUM

CLASSIFICATION SECRET/CONTROL - U.S. OFFICIALS ONLY
SECURITY INFORMATION

INFORMATION REPORT

REPORT

[Redacted]

REFERENCE COPY

CD NO.

COUNTRY Poland

SUBJECT Vessels of the Polish Navy

DO NOT CIRCULATE

DATE DISTR. 23 January 1953

NO. OF PAGES 3

DATE OF INFO.

[Redacted]

NO. OF ENCLS. 3 sketches (LISTED BELOW)

PLACE ACQUIRED

SUPPLEMENT TO 50X1-HUM REPORT NO.

[Redacted]

THIS DOCUMENT CONTAINS INFORMATION AFFECTING THE NATIONAL DEFENSE OF THE UNITED STATES, WITHIN THE MEANING OF TITLE 18, SECTIONS 793 AND 794, OF THE U.S. CODE, AS AMENDED. ITS TRANSMISSION OR REVELATION OF ITS CONTENTS TO OR RECEIPT BY AN UNAUTHORIZED PERSON IS PROHIBITED BY LAW. THE REPRODUCTION OF THIS FORM IS PROHIBITED.

THIS IS UNEVALUATED INFORMATION

[Redacted]

50X1-HUM

- 1. The Polish Navy has two motor torpedo boats (scigacz torpedowy) and nine submarine chasers (scigacz okretow podwodnych); the latter are organized into three divisions.

50X1-HUM

The motor torpedo boats and the submarine chasers are all of Soviet origin and differ only in small details. In addition to the following armament, the motor torpedo boats have two torpedos, one on each side of the ship.

50X1-HUM

- a. The dimensions of these ships are as follows:

Length: 24 meters
 Beam : 4.5 meters
 Draft : 1 meter
 Speed : about 15 knots.

- b. These craft carry the following armament:

1 Universal 37 mm. gun
 2 Colt machine guns
 18 depth charges
 6 short infantry rifles
 6 machine pistols
 3 TT or Nagan pistols

- c. The crew consists of 16 to 22 men, but occasionally it is composed of as many as 28 to 32 men, depending on the degree of training of the sailors or on the maneuvers being performed. Among the crew are two signal specialists who are responsible for all communications aboard each ship and between the various ships.

CLASSIFICATION SECRET/CONTROL - U.S. OFFICIALS ONLY

STATE	X	NAVY	X	NSRB															
ARMY	X	AIR	X	FBI															

SECRET/CONTROL - U.S. OFFICIALS ONLY

50X1-HUM

- 2 -

2. These motor vessels are equipped with three Soviet-produced aircraft engines, which burn very high octane gasoline. Following the general overhaul, which was performed during the winter of 1951-1952, it was expected that these craft would be able to obtain a speed of 30 knots, but this goal has never been attained and their speed remains at about 15 knots. The report concerning the increased speed of these vessels was connected with a rumor to the effect that these vessels would be fitted out with new German aircraft engines which were stored in large quantities at Kamieniec Pomorski, east of Swinoujscie (Swinemünde), but this fitting out was not performed. These engines were taken over as spoils by the Poles following the war.¹

50X1-HUM

3. The Polish Navy has nine trawlers² organized into two divisions.

- a. The dimensions of these vessels are as follows:

Length: 38 meters
 Beam : 6 meters
 Draft : 1 meter
 Speed : 9 knots

- b. The trawlers carry the following armament:

2 guns, 45 mm. caliber
 2 Colt machine guns, 12.7 mm. caliber
 14 mines
 10 short infantry rifles
 4 TT pistols
 1 light Degtyariev machine gun of Soviet origin
 1 Schultz tral (sweeping gear)
 1 paravane tral

- c. The vessels are each equipped with two 400 horsepower diesel engines. Prior to the time these vessels were transferred by the Soviet Union to Poland, they were equipped with three such engines, but one engine was removed from each vessel by the Russians. The ships have 110 volts electrical power on board.

- d. The communications and navigation equipment aboard these vessels is as follows:

1 UHF shortwave radio set
 2 magnetic compasses
 1 liquid filled compass
 3 hand plummets
 1 echo plummet of Soviet origin
 1 LEFKI demagnetizing set

- e. The crew usually consists of 29 to 32 men, as follows:

<u>Rank</u>	<u>Position</u>
1 Lieutenant	Captain
1 Second Lieutenant	Second in command
1 Boatswain	Engineer
1 Boatswain	Second engineer
1 Boatswain	Gunner
1 Boatswain	Mine Officer
2 Boatswain's Mates	Electrical engineers

SECRET/CONTROL - U.S. OFFICIALS ONLY

SECRET/CONTROL - U.S. OFFICIALS ONLY

- 3 -

<u>Rank</u>	<u>Position</u>
1 Boatswain's Mate	Navigator
1 Boatswain's Mate	Helmsman
1 Boatswain's Mate	Cook
1 Sailor	Radio operator
2 Sailors	Signalmen
5 Sailors	Gunners
3 Sailors	Assistants to mine officer
4 Sailors	Machine gunners
3 Sailors	Motormen

- f. The overall armor plating of each ship is four millimeters thick, but the navigation room and the engine rooms have one centimeter armor.
4. All cannons and Colt machine guns on the above-described vessels are equipped with armor which is between 0.5 and 1 centimeter in thickness. The Colt machine guns have an effective range of up to 4,500 meters. The effective range of cannons on the submarine chasers and on the motor torpedo boats is about seven kilometers, but in 1951 their percentage of accuracy in simulated attacks on submarines was only seven percent. When engaged in simulated attacks at sea against submarines, using depth charges and gun fire, submarine positions are marked with buoys. The trawlers fairly frequently perform simulated laying and sweeping of mines, at which times mine positions are indicated by floating objects such as buoys. The trawlers cannot leave port if conditions at sea are the equivalent of four degrees Beaufort (i.e., wind velocity 13-18 miles per hour).

50X1-HUM

5. [redacted] nearly all of the above-described vessels were commanded by non-commissioned officers. Since that time, however, the commanders have been young lieutenants or second lieutenants; these officers are, for the most part, merchant marine officers commissioned as naval reserve officers who were forced to remain in the Navy.

50X1-HUM

6. [redacted] DELFINY class craft. These vessels are armed with 75 mm. Soviet guns; these guns are too heavy for these vessels which are built of wood. Firing of guns has caused much damage to the trawlers, particularly in the electrical firing system; as a result, an order was issued some time ago forbidding the trawlers to engage in firing.

1. [redacted] Comment: The aircraft engines stored in Kamieniec Pomorski are part of the lot of German Junker aircraft engines which Poland attempted to sell [redacted]. This sale did not take place because of a scandal which ensued from this attempted transaction.

50X1-HUM

2. [redacted]

50X1-HUM

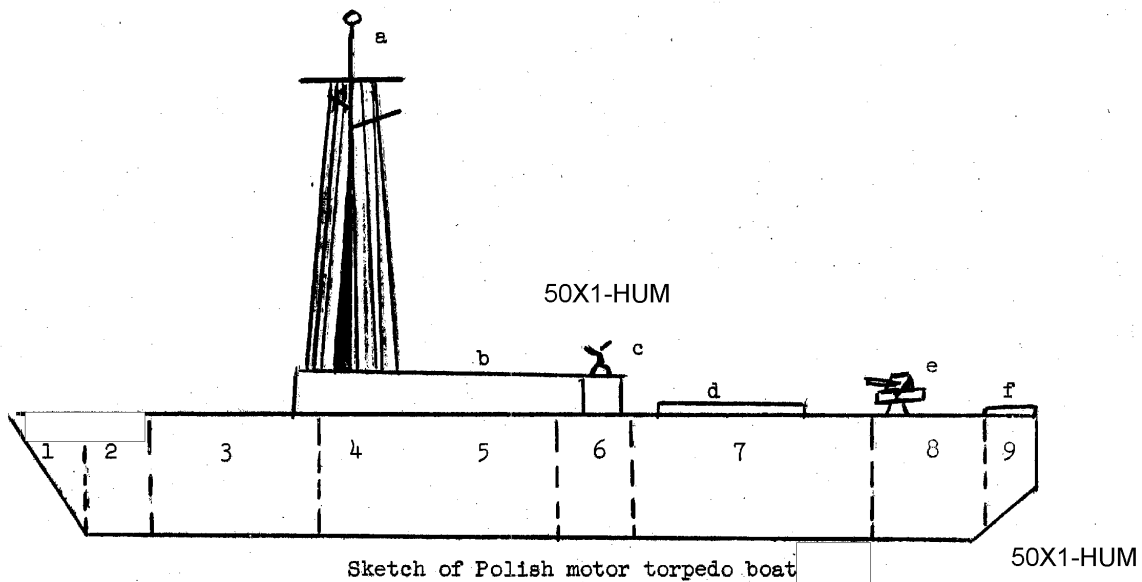
SECRET/CONTROL - U.S. OFFICIALS ONLY

SECRET/CONTROL - U.S. OFFICIALS ONLY



- 1 -

Attachment 1



LEGEND

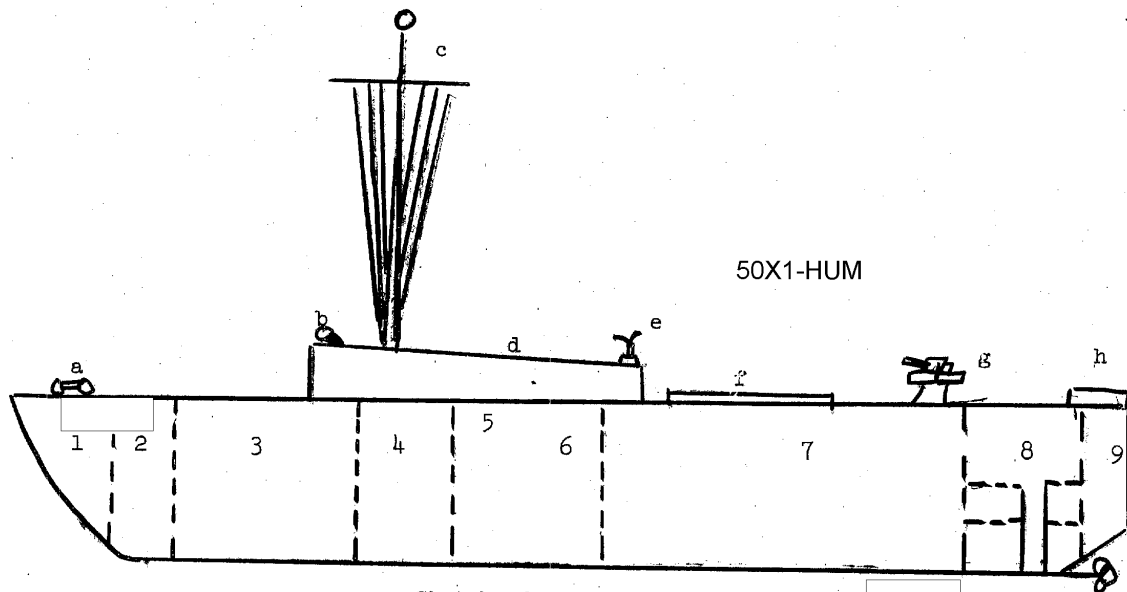
- a. Mast with radio antenna.
 - b. Navigating bridge.
 - c. Two colt machine guns, caliber 12.7 mm.
 - d. Depth charge storage racks.
 - e. 37 mm. gun.
 - f. Depth charge projectors (wyrzutnia min glebinowych).
-
- 1. Anchor room.
 - 2. Magazine.
 - 3. Crew berths.
 - 4. Navigation cabin (sic).
 - 5. Radio room.
 - 6. Captain's cabin and mess.
 - 7. Engine room.
 - 8. Fuel tanks.
 - 9. Steering engine room.

SECRET/CONTROL - U.S. OFFICIALS ONLY

SECRET/CONTROL - U.S. OFFICIALS ONLY



Attachment 2



Sketch of Polish motor torpedo boat

50X1-HUM

LEGEND

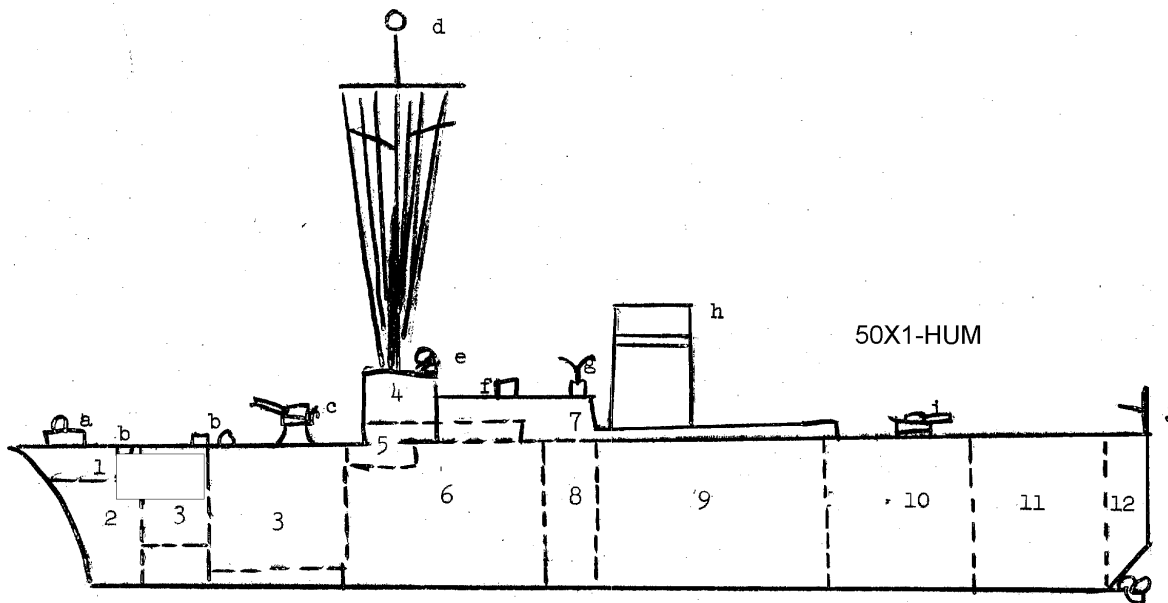
- a. Anchor winch.
 - b. Searchlight.
 - c. Mast with radio antenna.
 - d. Navigating bridge.
 - e. Two colt machine guns, caliber 12.7 mm.
 - f. Depth charge storage racks.
 - g. 37 mm. gun.
 - h. Depth charge projectors.
-
- 1. Anchor room.
 - 2. Magazine.
 - 3. Crew berths.
 - 4. Navigation cabin (sic).
 - 5. Radio room.
 - 6. Captain's cabin and mess.
 - 7. Engine room.
 - 8. Fuel tanks.
 - 9. Steering engine room.

SECRET/CONTROL - U.S. OFFICIALS ONLY

SECRET/CONTROL - U.S. OFFICIALS ONLY

Attachment 3

- 3 -



Sketch of Soviet trawler

50X1-HUM

LEGEND

- a. Anchor winch.
 - b. Hatches.
 - c. 45 mm. gun.
 - d. Mast with radio antenna and signal halyards.
 - e. Signal searchlights.
 - f. Main compass.
 - g. Two colt machine guns.
 - h. Stack (the horizontal stripes indicate the division to which ship is attached),
 - i. 45 mm. gun.
 - j. Crane for hoisting the sweeping gear on board ship.
- 1. Anchor room.
 - 2. Store-room for various tools and parts.
 - 3. Crew berths.
 - 4. Pilot house.
 - 5. Radio room.
 - 6. Officers' berths.
 - 7. Navigating bridge.
 - 8. Galley.
 - 9. Engine room.
 - 10. Fuel tanks (sic).
 - 11. Storage room for sweeping gear.
 - 12. Steering engine room.

SECRET/CONTROL - U.S. OFFICIALS ONLY