

00D

FEB 1952

CENTRAL INTELLIGENCE AGENCY

CLASSIFICATION SECRET/CONTROL - U.S. OFFICIALS ONLY  
SECURITY INFORMATION

25X1

**INFORMATION REPORT**

REPORT

CD NO.

COUNTRY Hungary

DATE DISTR: 10 September 1952

SUBJECT The Gráb Textile Works at Győr

NO. OF PAGES 2

DATE OF INFO.

25X1

NO. OF ENCLS. 1 (Sketch)  
(LISTED BELOW)

PLACE ACQUIRED

SUPPLEMENT TO REPORT NO.

**REFERENCE COPY**  
**DO NOT CIRCULATE**

THIS DOCUMENT CONTAINS INFORMATION AFFECTING THE NATIONAL DEFENSE OF THE UNITED STATES, WITHIN THE MEANING OF TITLE 18, SECTIONS 793 AND 794, OF THE U.S. CODE, AS AMENDED. ITS TRANSMISSION OR REVELATION OF ITS CONTENTS TO OR RECEIPT BY AN UNAUTHORIZED PERSON IS PROHIBITED BY LAW. THE REPRODUCTION OF THIS FORM IS PROHIBITED.

THIS IS UNEVALUATED INFORMATION

25X1 The mill utilizes wool that comes from the USSR. It manufactures various textiles, and also artificial leather goods. The first-quality products, about 75 percent of the total, go to the USSR whereas the remaining 25 percent, of inferior quality, stays in Hungary.

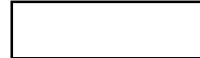
Legend to sketch No. 1. of the Gráb Works at Győr:

1. Main building, three stories, on the main floor are stored the manufactured goods. Six combing machines and 2 looms are also located here. The spinning mill is on the second floor; also 7 machines, 2 "Selfactors"- for starting the spinning mill, and 2 calendering machines. The third floor is taken up by the carding machine and 4 machines for preparing the wool. The "A" machine, located in the empty elevator shaft (see sketch No. 2), produces a material called "miner's sheet" (Bányászlepel) which is a war product. The ribbon, 1.5 meters wide, consists of wrinkled paper dipped in a green solution. It is believed that gas-preventative shrouds are made of this material.
2. Power plant: 1 steam engine, 1 dynamo, 1 boiler of 12 atmospheres and a second boiler of 25 atmospheres.
3. Machine repair shop: 4 lathes and 1 milling machine.
4. An artificial leather shop is located on the second floor. The dye plant is on the ground floor.
5. Administrative office.
6. Warehouse for the dyes.
7. Bath for films and textile bolts.

CLASSIFICATION SECRET/CONTROL - U.S. OFFICIALS ONLY

STATE	<input checked="" type="checkbox"/>	NAVY	<input checked="" type="checkbox"/>	NSRB	<input type="checkbox"/>	DISTRIBUTION											
ARMY	<input checked="" type="checkbox"/>	AIR	<input checked="" type="checkbox"/>	FBI	<input type="checkbox"/>	ORR	Ev										

SECRET/CONTROL - U.S. OFFICIALS ONLY



-2-

8. Main entrance. The kitchen of the mill is located on the ground floor. The foremen live on the second floor.
9. Garage for 4 cars.
10. Storage for electrical material, spare parts, etc.
11. Storage for metal parts.
- 12.) Employees' dwellings.
- 13.)
14. Worker's dwellings.
15. Entrance No. 2 : fire house (15 men).
16. Headquarters.
17. Spinning mill office.
18. Room where the materials are prepared (8 machines).
19. Dye plant.
20. Weaving plant, with about 350 to 400 looms.
21. Carpenter's shop.
22. Thread storage area.



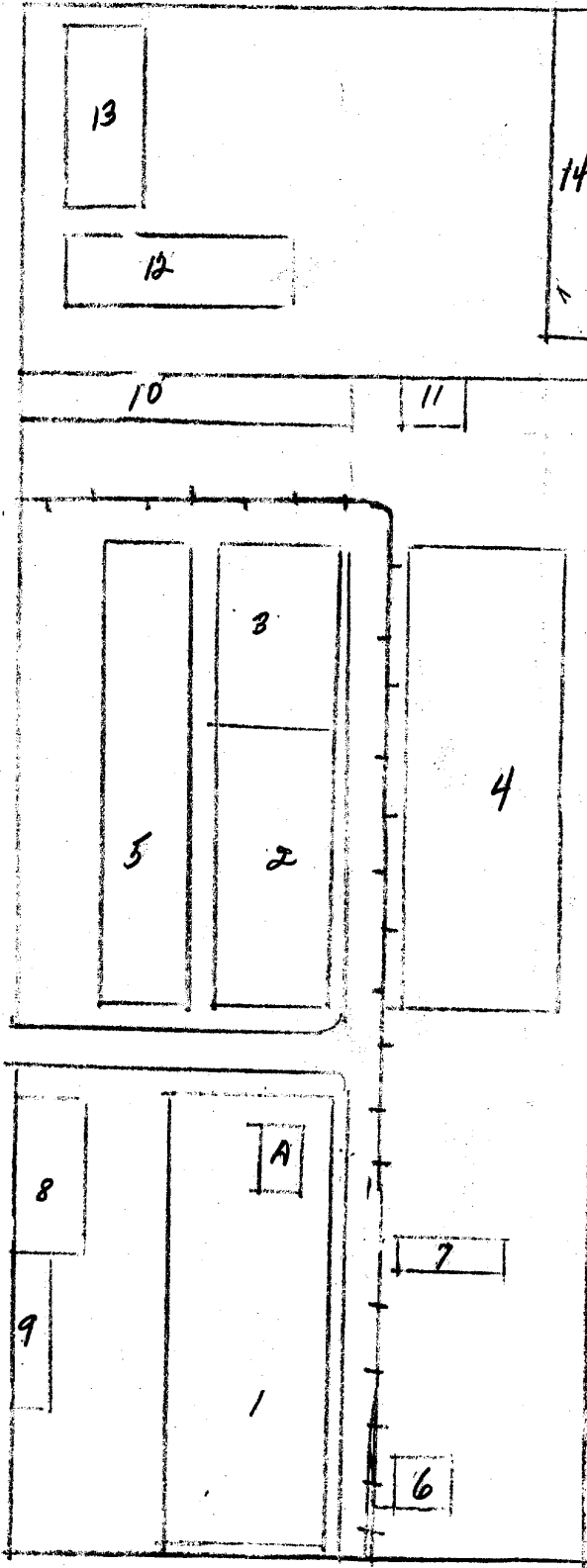
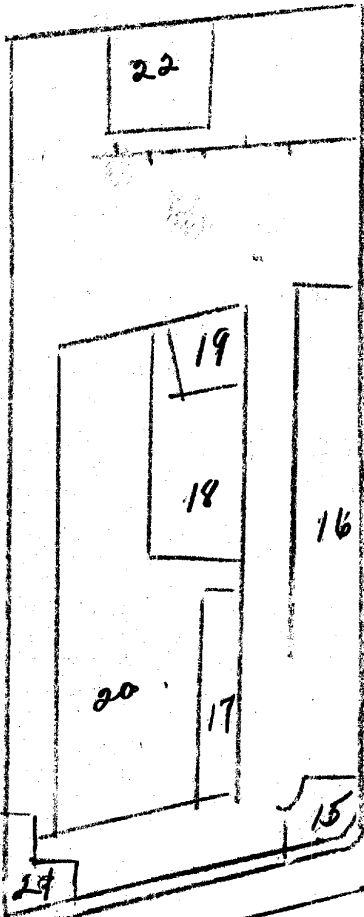
SECRET/CONTROL - U.S. OFFICIALS ONLY

SECRET/CONTROL - U.S. OFFICIALS ONLY.



Attachment I

The Grab Textile Works at Győr



SECRET/CONTROL - U.S. OFFICIALS ONLY