

**INFORMATION REPORT**

CD NO.

43

COUNTRY Germany (Russian Zone)

DATE DISTR. 14 March 1952

SUBJECT Radar Installation in Soviet Zone of Germany

NO. OF PAGES 3

PLACE ACQUIRED 25X1

NO. OF ENCLS. (LISTED BELOW) 6 sketches on ditto

DATE OF INFO. 25X1

SUPPLEMENT TO REPORT NO.

[Redacted]

THIS DOCUMENT CONTAINS INFORMATION AFFECTING THE NATIONAL DEFENSE OF THE UNITED STATES WITHIN THE MEANING OF THE ESPIONAGE ACT OF U.S.C. 51 AND 52, AS AMENDED. ITS TRANSMISSION OR THE REVELATION OF ITS CONTENTS IN ANY MANNER TO AN UNAUTHORIZED PERSON IS PROHIBITED BY LAW. REPRODUCTION OF THIS FORM IS PROHIBITED.

THIS IS UNEVALUATED INFORMATION  
\* as indicated

[Redacted]

25X1

1. During the period from 1 September to 23 November 1951, [redacted] no radar sets at the former radar installations near Binz, Gohren and Bug on Ruegen or Hiddensee Island. (1)

2. On 19 October 1951, [redacted] a radar set with a seven section antenna at building 15a on the arneuende-Markgrafenhede road in arneuende (L 50/0 82). [redacted] (2)

3. On 12 September 1951, [redacted] the Dumbo type radar set observed next to the Ellerholz-Rechlin railroad line prior to 28 September had been moved to a point about 200 meters north of the southern hangar of Rechlin airfield. (3) On 28 September, [redacted] two trucks parked near the radar set [redacted] A line extended from the trucks to the barracks installation in Rechlin. On 10 December, this set was no longer observed north of the southern hangar of the airfield. Only two shed-like structures, which were empty, were seen at the spot. On 12 December, [redacted] a new radar set on the blocked road west of the east-west runway. A bunker, about 10 meters long, protruding about 1.8 meters above the ground, was just north of the set. On the longer side the bunker had two light shafts; its roof was covered with roof paper. No wires were observed extending between the set and the bunker. (4)

4. On 12 December, a new radar set was being erected about 30 meters south of the west end of the runway at Rechlin airfield.

5. On 14 December, the Dumbo type radar set, which was previously located at Rechlin airfield, was observed south of the runway of Laerz (N 54/U 33) airfield, on the Laerz-Vietzen road.

6. During the period from 13 August to 9 December 1951, [redacted] two Dumbo type radar sets at Wittstock (N 54/U 11) airfield. The antenna of the set located south of the MVD building was always rotating. No personnel were observed there except for soldiers who carried food to the installation in a pail.

CLASSIFICATION

STATE	NAVY	NSRB	DISTRIBUTION																	
ARMY	AIR	FBI																		

**CONFIDENTIAL**

Document No. 3  
 No Change in Class.   
 Declassified  
 Class. Changed To: TS S (C) 25X1  
 Auth.: HR 70-2  
 Date: 82-00457R01000210003-9 By: [redacted]

SECRET/CONTROL/US OFFICIALS ONLY

- 3 -

25X1

25X1

13. In mid-November, [redacted] sketches of the radar installation observed on Hill 63.2 east of Gardelagen and of the lines extending to the installation. (10)

14. On 24 November, [redacted] Dumbo type radar set in the fenced-in billeting area west of Millersleben. The set was erected about 100 meters east of the Adcock DF station, 50 meters behind the wooden fence joining two houses. A radio truck was parked near the radar set. It was first observed [redacted] in September. (11)

15. On 1 October [redacted] radar set on Apollonsberg near Wittenberg (N 52/E 37) and a decimetric wave radio station near Trauhn. (12)

16. In August and early September, [redacted] Dumbo type radar set on a little hill covered with trees and bushes between the northern edge of Grossenhain (N 52/A 01) airfield and the Grosser Spittel Teich. The area of the radar installation was patrolled by sentries. (13)

25X1

25X1

25X1

Comments.

- (1) A radar set was last observed on 24 June 1951 on Fahrenberg Hill southwest of Binz (N 55/P 85). A RUG-2 type radar set was last observed on 25 and 26 June respectively on the hill southeast of Goehren (N 55/P 95) and near Hiddensee (N 55/P 47). No radar set was observed near Forsthaus Bug in May 1951. [redacted]
- (2) This is a RUG-2 type radar set. [redacted]
- (3) For previous and present locations of this set, see Annex 1.
- (4) The set is a Dumbo type radar set. For location of set, see Annex 2. The set is believed to be operated by the fighter division headquarters located in Wechlin/Laerz.
- (5) A radar school was previously reported located in Wittstock. The activities observed at the radar set west of the motor vehicle garages tend to support this assumption.
- (6) For new location of the set and layout sketch of buildings, see Annex 3. The layout sketch of buildings is an extract of Annex to [redacted]
- (7) For location of this set, see Annex 4.
- (8) Prior to 26 December 1951, Oranienburg airfield was occupied by a bomber regiment and a bomber division headquarters. The bomber regiment then moved to Priesen-Trend, while the division headquarters was observed in Kerneuchen. It is believed that the Dumbo type radar set previously observed in Oranienburg belongs to the division headquarters and will therefore probably be moved to Kerneuchen.
- (9) A Dumbo type radar set was located on Wachtberg Hill south of Thoeben near Lerdor. The radar set here, which is reported for the first time, is located just on the shore of the lake.
- (10) The set is a Dumbo type radar, [redacted] 25X1  
[redacted] for sketches of the set and lines extending to it, see Annexes 5 and 6.
- (11) The existence of this radar set was confirmed by another source. See [redacted] The presence of the Adcock DF station was also [redacted]. The barracks installation [redacted] in Millersdorf quarters an AAA unit.
- (12) The Dumbo type radar set and the decimetric wave radio station are believed to be operated by the fighter corps headquarters at [redacted]

25X1

25X1

25X1

25X1

25X1

25X1

25X1

25X1

25X1

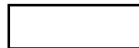
25X1

25X1

25X1

SECRET/CONTROL/US OFFICIALS ONLY

SECRET/CONTROL/US OFFICIALS ONLY



Annex to

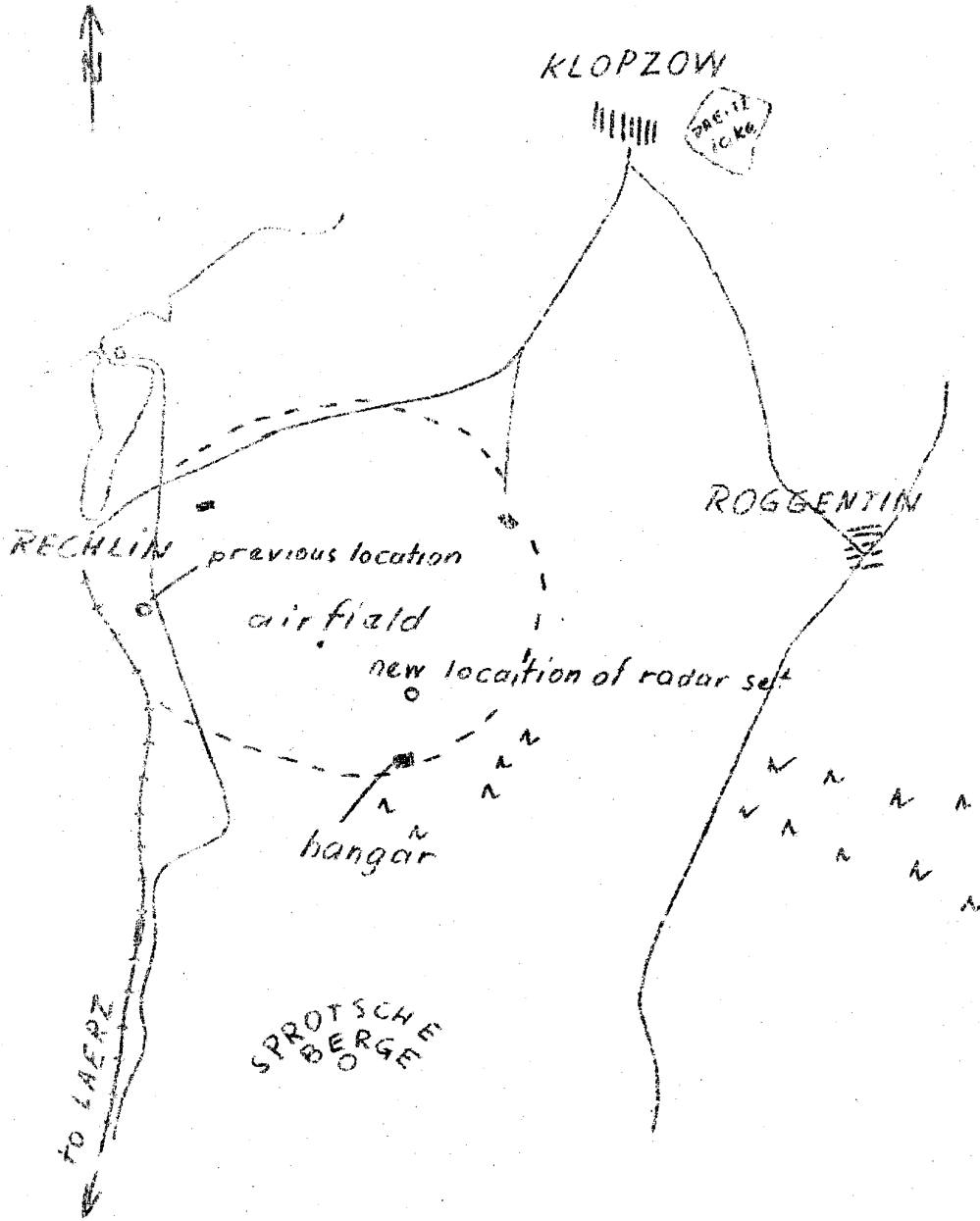
- a. Two-wire telephone line
- b. Two rubber cables
- c. One rubber cable
11. Motor vehicle garages
12. Headquarters
13. EM quarters
21. Hotel for officers and personnel who operate the radar set
22. Messhall and kitchen
23. Photographer, barber shop, ration storage
24. Hotel for officers, kitchen, quarters
25. Telephone switchboard
- 26, 28, 29. EM quarters
27. Offices
30. Hospital
31. Elevated stone bunker. A large door on its northern side gives access to a room in which four trucks can be parked.

SECRET/CONTROL/US OFFICIALS ONLY

ANNEX 1

SECRET/CONTROL/US OFFICIALS ONLY

Map of Rechlin Airfield

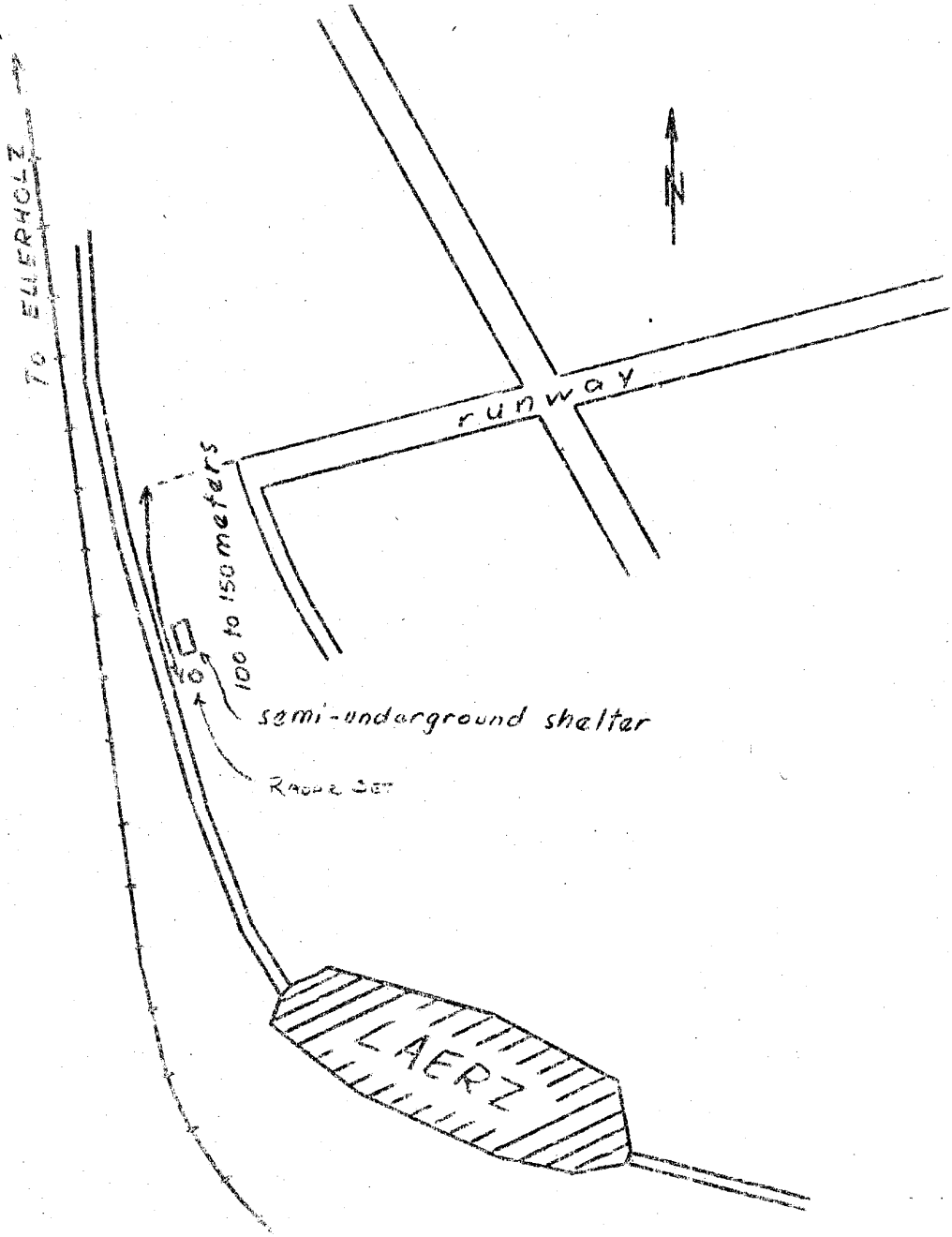


SECRET/CONTROL/US OFFICIALS ONLY



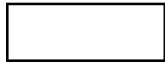
SECRET/CONTROL/US OFFICIALS ONLY

under set at laerz airfield.



SECRET/CONTROL/US OFFICIALS ONLY

25X1



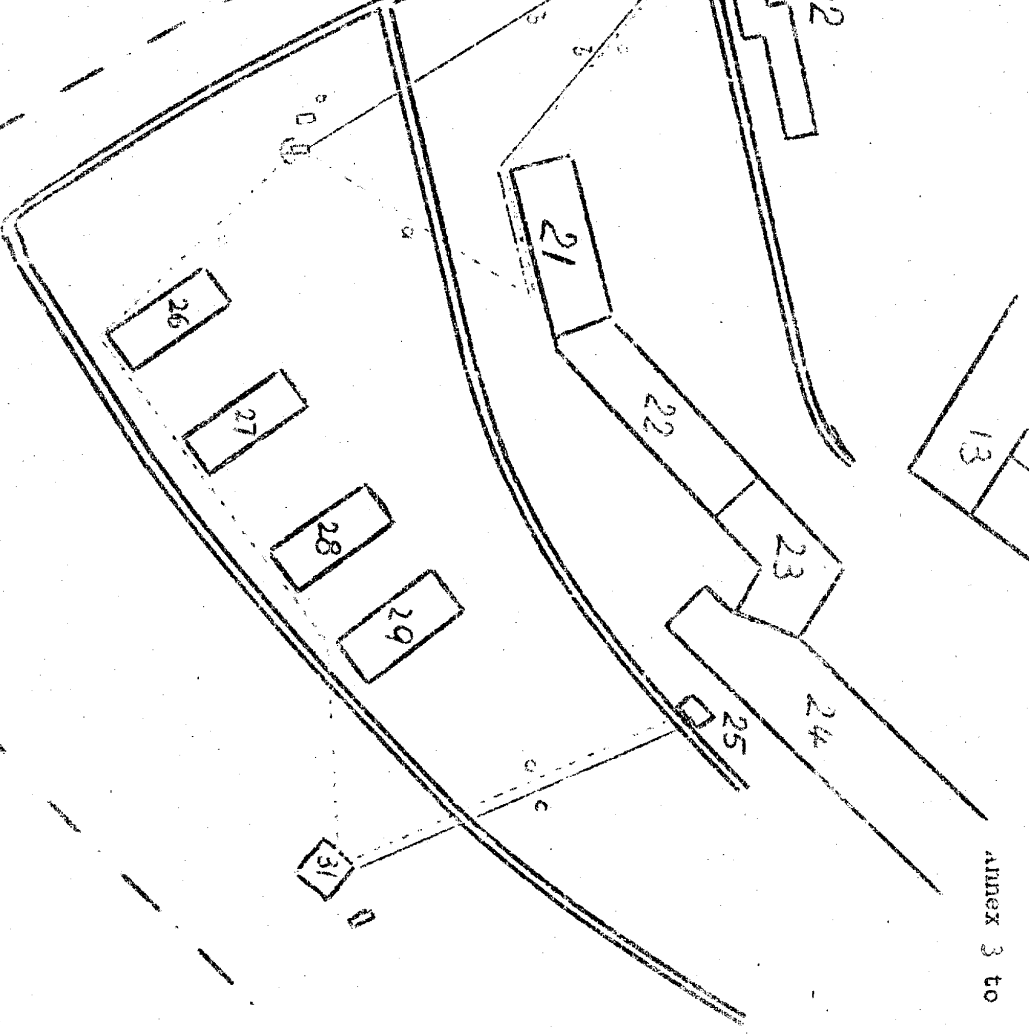
present location  
of radar set

Layout sketch of radar installation

Wurtsmith Airfield

Legend see next page

new location  
of radar set

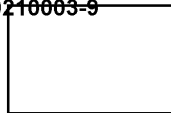


Annex 3 to

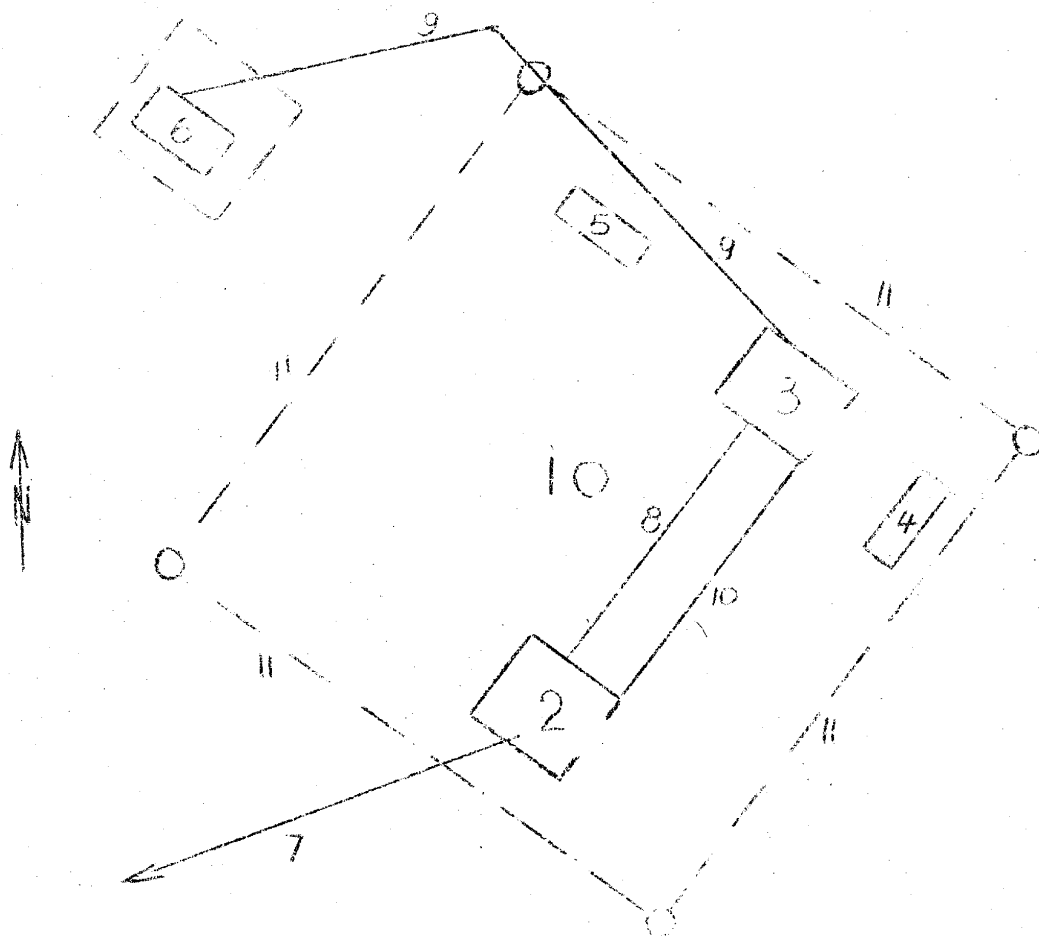
scale  
about 1:2,000

APPROX 2

SECRET/CONTROL/US OFFICIALS ONLY



Radar Set at Gardeloren.



Legend:

- 1 Radar set
- 2 and 3 Low wooden buildings, each about 4x3 meters, with a large door each
- 4 and 5 Log out with a wooden roof, three meters square, one meter extending above ground
- 6 Radio track
- 7 Line to the Remount Kaserne
- 8 Undetermined number of single wire lines
- 9 Double-wire lines
- 10 Antenna wire
- 11 Wooden fence with spotlights at its corners

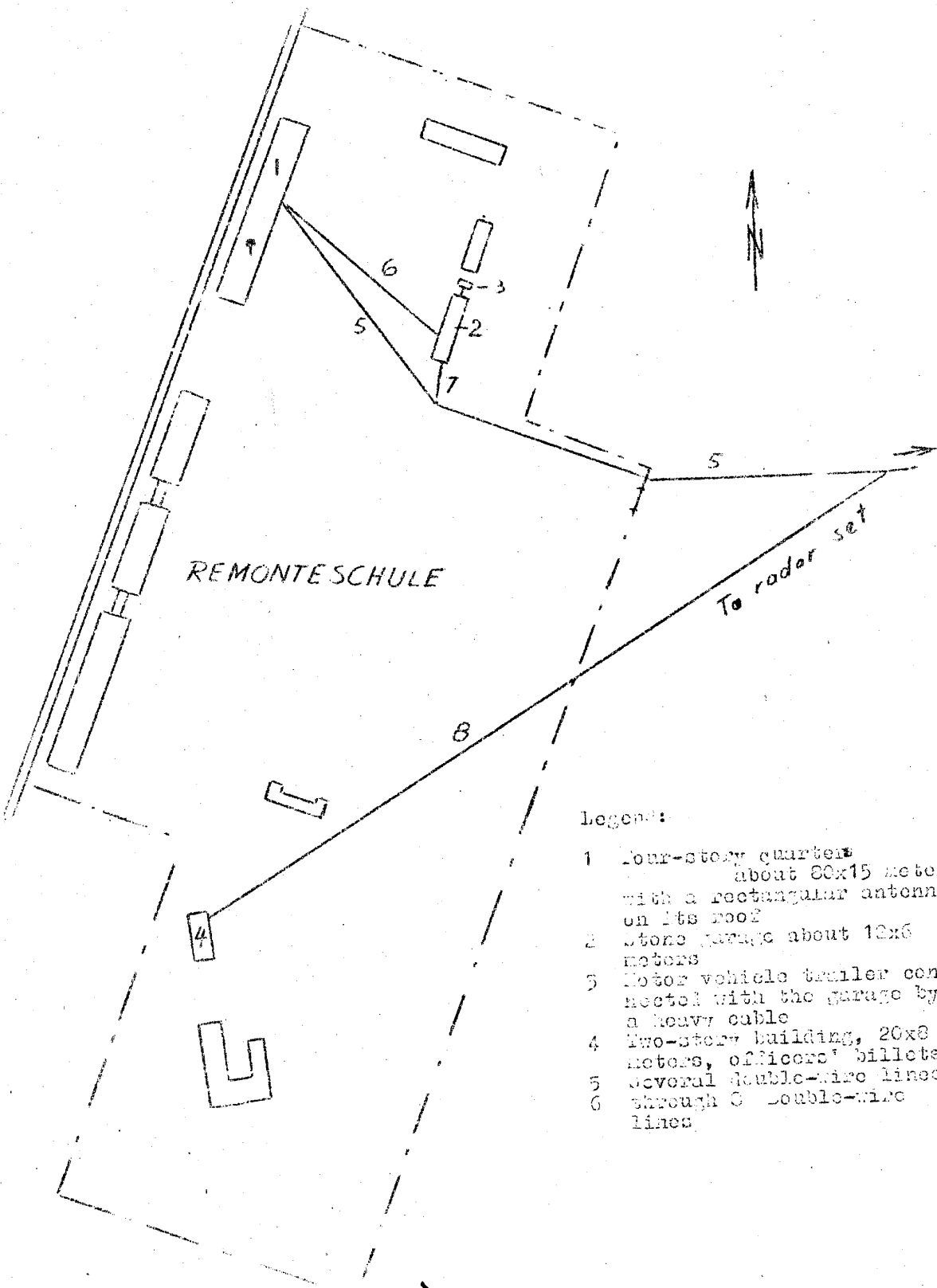
SECRET/CONT OL/US OFFICIALS ONLY



CONFIDENTIAL

SECRET/CONTROL/US OFFICIALS ONLY

radar set at Gardclowen.



Legend:

- 1 Four-story quarters about 80x15 meters with a rectangular antenna on its roof
- 2 Stone garage about 12x6 meters
- 3 Motor vehicle trailer connected with the garage by a heavy cable
- 4 Two-story building, 20x8 meters, officers' billets
- 5 Several double-wire lines
- 6 through 3 double-wire lines

CONFIDENTIAL

SECRET/CONTROL/US OFFICIALS ONLY