

INTELLIGENCE

INFORMATION REPORT

CD NO.

COUNTRY, USSR (Ukrainian SSR)

DATE DISTR. 26 Feb. 1952

SUBJECT Shipyard No. 532 near Kamysh Burun

NO. OF PAGES 2

25X1

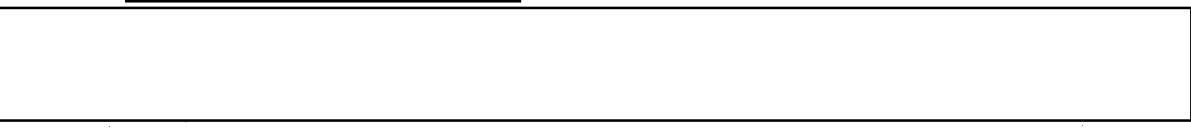
PLACE ACQUIRED

NO. OF ENCLS. 1 (2 pages)
(LISTED BELOW)

DATE OF INFO.

SUPPLEMENT TO REPORT NO.

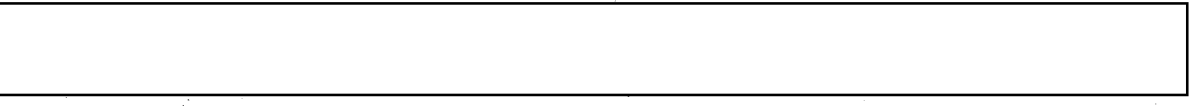
25X1



THIS DOCUMENT CONTAINS INFORMATION AFFECTING THE NATIONAL DEFENSE OF THE UNITED STATES WITHIN THE MEANING OF THE ESPIONAGE ACT 50 U.S.C. 31 AND 32, AS AMENDED. ITS TRANSMISSION OR THE REVELATION OF ITS CONTENTS IN ANY MANNER TO AN UNAUTHORIZED PERSON IS PROHIBITED BY LAW. REPRODUCTION OF THIS FORM IS FORBIDDEN.

THIS IS UNEVALUATED INFORMATION

25X1



1. The shipyard, designated Zavod No 532, is located near Kamysh Burun (45°17'N/36°24'E) and is 20 km south of Kerch (45°23'N/36°26'E) Ukrainian SSR, on a bight which is open to the north. *
2. The shipyard is a newly built yard. The main installations are a shipbuilding shop with modern equipment and an adjoining slip for series building. The slip has an overhead crane installation which came from the Neptun Shipyard in Rostock. Mechanical equipment and other installations of the shipyard also came from Rostock. The yard, which had been seriously damaged during the war, was almost entirely reconstructed and expanded by additional buildings by December 1948. **
3. Nine seagoing lighters, without their own power, were built during the period of reconstruction, from 1946 to May or June 1948. They had a length of 70 meters, beam of 15 meters, an overall height forward of 3.5 meters, an overall height amidships of 3 meters and a draft of 0.9 meters when empty. Three vessels for the Navy were laid down in May and June 1948. Their hulls were finished by September 1948. They had a length of 80 meters, beam of 5 meters, an overall height forward of 4 meters, an overall height amidships of 3 meters and an overall height aft of 2.5 meters. Their two sides tapered toward the stern. Guns were kept ready to arm the vessels. ***
4. A Soviet civilian, allegedly an expert, was manager of the shipyard. Subordinate to him were four or five Soviet engineers as section chiefs. The number of employees was estimated to be between 700 and 800, a large percentage of whom were women. A total of 300 PWs, who were employed as specialists, were dismissed in December 1948, after Soviet workers had been trained to replace them at the machines. Workmen said that the number of employees would be increased considerably.

25X1

Comment. The designation of the shipyard as Zavod 532 was confirmed by two other PWs while a third PW stated the number was 523. The shipyard is 12 km from the town of Kerch and a few hundred meters from Kamysh Burun.

25X1

Comment. For layout sketch of this shipyard, see Annex. The installations of the shipyard and the relative location of the workshops were largely confirmed by seven other PWs. It was already known from previous information, and was confirmed

25X1

CLASSIFICATION CONFIDENTIAL

STATE	<input checked="" type="checkbox"/>	NAVY	<input checked="" type="checkbox"/>	NSRB		DISTRIBUTION													
ARMY	<input checked="" type="checkbox"/>	AIR	<input checked="" type="checkbox"/>	FBI															

Document No. 3

No Change in Class.

Declassified

Class. Changed To: TS S C 25X1

Auth.: HR 70-2

Date: 8 SEP 1981

CONFIDENTIAL

25X1

CENTRAL INTELLIGENCE AGENCY

by five PWs, that the machines and other equipment, including the overhead crane installation, were dismantled and shipped from the Neptun Shipyard in Rostock. This report indicates that the shipyard is designed to build small vessels and has few, if any, facilities for repair work.

25X1

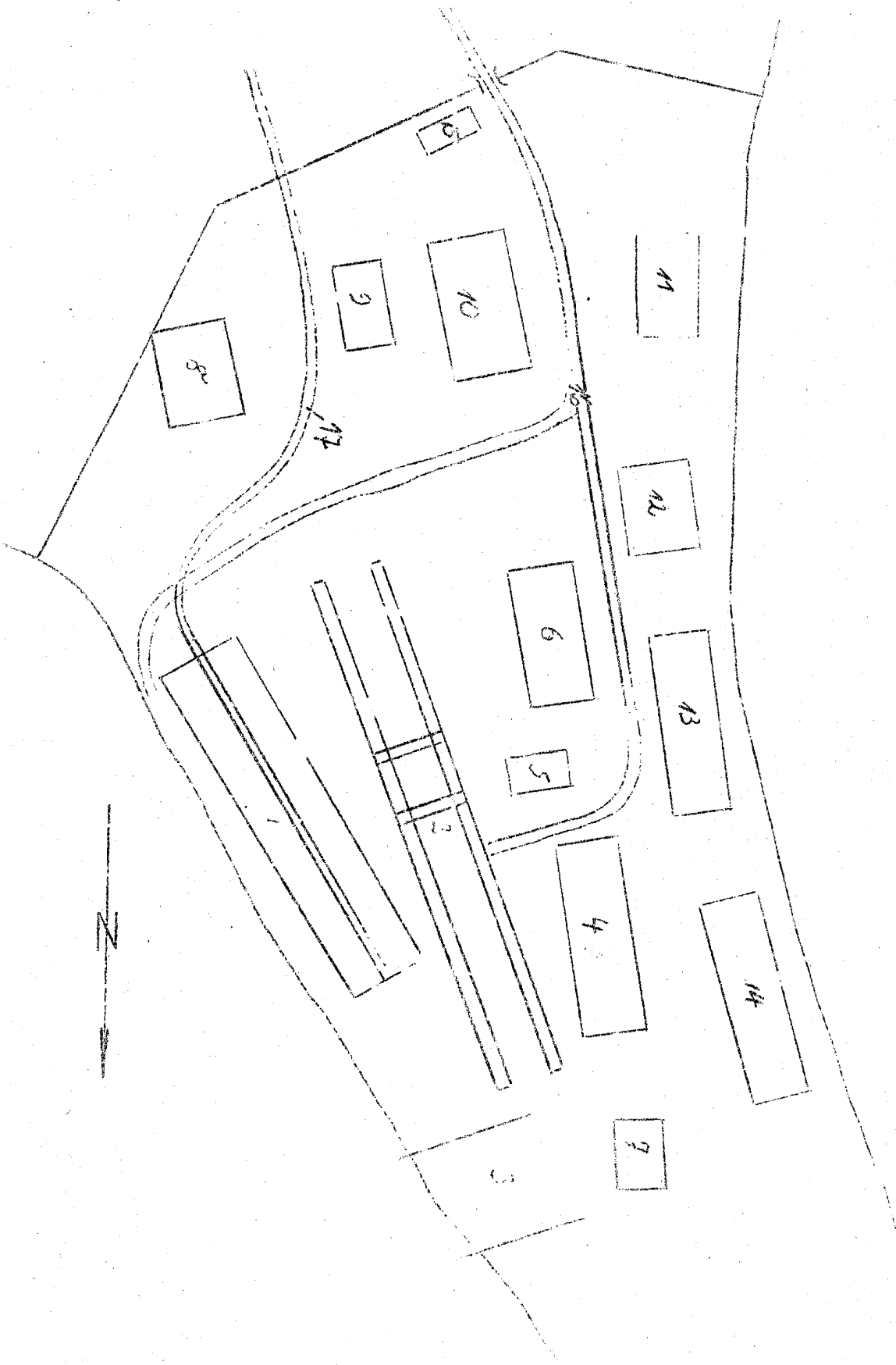
Comment. The construction of lighters was confirmed by six PWs, one of whom stated that ten lighters were built between 1946 and mid-1948. Another PW stated that dredges were also built and the construction of barges in this shipyard has been previously reported. It is believed that the dimensions of the lighters has been misestimated. According to previous information these lighters were 45 meters long, 7.5 meters wide and 3 meters deep, which would indicate a displacement of between 450 and 500 tons. The ships built for the Navy are steel vessels. The number of such ships under construction was confirmed by three PWs while one PW stated that four ships were laid down in May and June 1948. The dimensions, as well as other information, tend to indicate that these vessels are probably minesweepers of the Fuze-class, which are 57 meters long, 7 meters wide and 2.3 meters deep, or of a similar type.

Annex: Sketch of Shipyard No. 532 at Kamysk Burur with Legend

25X1

CONFIDENTIAL

Shipyard No. 532 near Kamysh Duzen



CONFIDENTIAL

25X1

CENTRAL INTELLIGENCE AGENCY

Legend:

1. Shipbuilding shop with welding plant.
2. Crane installation built above the slip, equipped with two bridge cranes and four revolving cranes.
3. Transverse slip used to launch the vessels which are built under the crane installation.
4. Machine shop and shipbuilding locksmith's shop (Schiffschlosserei).
5. Tool shed.
6. Forge equipped with three pneumatic hammers and three oil-fired hearths.
7. Copper forge and tube shop (Rohrschlosserei).
8. Reserve power plant with Diesel-generator and transformer station.
9. Oxygen plant.
10. Wood-working shops, including a sawmill, a carpentry shop and a finishing shop.
11. Garage with five yard-owned trucks and small workshop.
12. Foundry with auxiliary shops.
13. Newly-built workshop.
14. Newly-built workshop.
15. Guardhouse near gate.
16. Shipyard road, only partially indicated.
17. Railroad sidings, only partially indicated.

25X1

CONFIDENTIAL