

CENTRAL INTELLIGENCE AGENCY



3. Work Force

One hundred PWs, 40 Soviets including 10 foremen and women, working one shift.

25X1



Comment

25X1



- Three Annexes:
1. Location of the Power Plant in Baranovichi.
 2. Side View of the Power Plant in Baranovichi.
 3. Plant Layout of the Power Plant in Baranovichi.

*(54-02N, 32-39E)



25X1

CONFIDENTIAL

CENTRAL INTELLIGENCE AGENCY

25X1

Annex 3/1

Legend to Annex 3

- 1 Entrance and guard house
- 2 Storage of construction materials
- 3 Construction office, wooden building
- 4 Water tower under construction, excavations 4 meters deep, 20 meters in diameter; concreting did not start.
- 5 Coal bunker under construction, concrete structure, 50 x 12 x 3 meters
- 6 Conveyer belt to conveying tower under construction
- 7 Conveying tower, 10 x 10 x 12 meters, ferro-concrete bare structure completed
- 8 Projected conveyer belt between conveying tower and main plant building.
- 9 Fitting shop, brick building, 25 x 8 x 4 meters, constructed in 1947/48, working for plant requirements
- 10 Machine shop, brick building, 60 x 10 x 8 meters, bare structure completed, since December 1943 storage of valuable machines from Rostock
- 11 Power plant building, total dimensions will be 40 x 40 meters
 - a Turbine foundation
 - b Four-story section, 12 meters high, bare structure completed
 - c Four-story section, fourth floor alone 20 meters high, with narrow gauge railroad tracks on top for coal shipments. The third floor houses four ferro-concrete funnels, 8 meters high, intake opening 4 x 4 meters and outlet opening 2 x 2 meters.
 - d Section, 4 meters high, bare structure completed one additional story to be constructed.
 - e Basic walls, 8 meters high, with consoles for the installation of a traveling crane

25X1

CONFIDENTIAL

25X1

CONFIDENTIAL

2

CENTRAL INTELLIGENCE AGENCY

25X1

Annex/3/2

- 12 Surveyed area for the construction of an additional building similar to No. 11 and, according to Soviets, to be equipped with two turbines.
- 13 Storage area with machinery from Rostock packed in boxes
- 14 Railroad connection.

25X1

CONFIDENTIAL

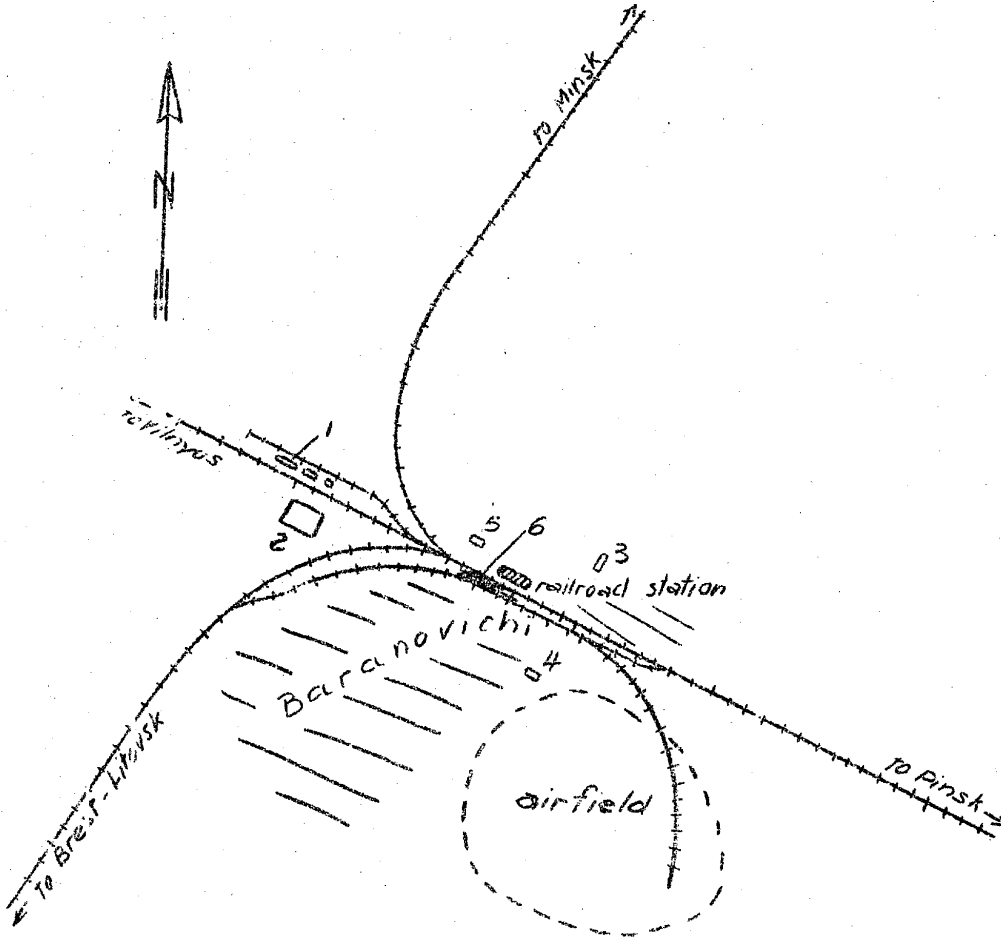
CONFIDENTIAL

CENTRAL INTELLIGENCE AGENCY

25X1

Annex I

Location of the Power Plant in Baranovichi



scale about 1:50,000

Legend:

- 1 Locomotive repair plant
- 2 Power plant
- 3 P. camp No. 7410/8
- 4 P. camp No. 7410/9
- 5 Railroad administration
- 6 Loading ramp, 400 m long

25X1

CONFIDENTIAL

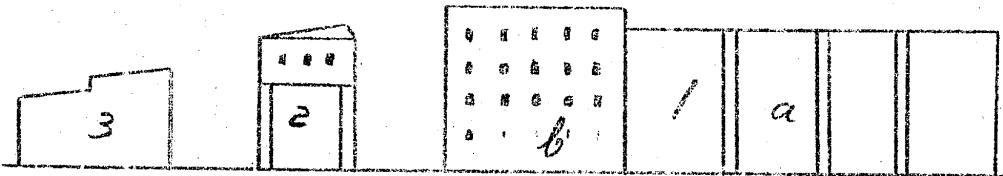
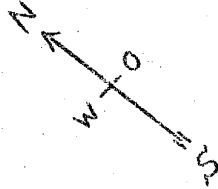
CONFIDENTIAL

25X1

CENTRAL INTELLIGENCE AGENCY

Side View of the Power Plant in Baranovichi

Annex 2



Legend:

- 1 Power plant building
- a Machine house
- b Administration
- 2 Building supported by concrete pillars
- 3 Semi-finished building

25X1

CONFIDENTIAL

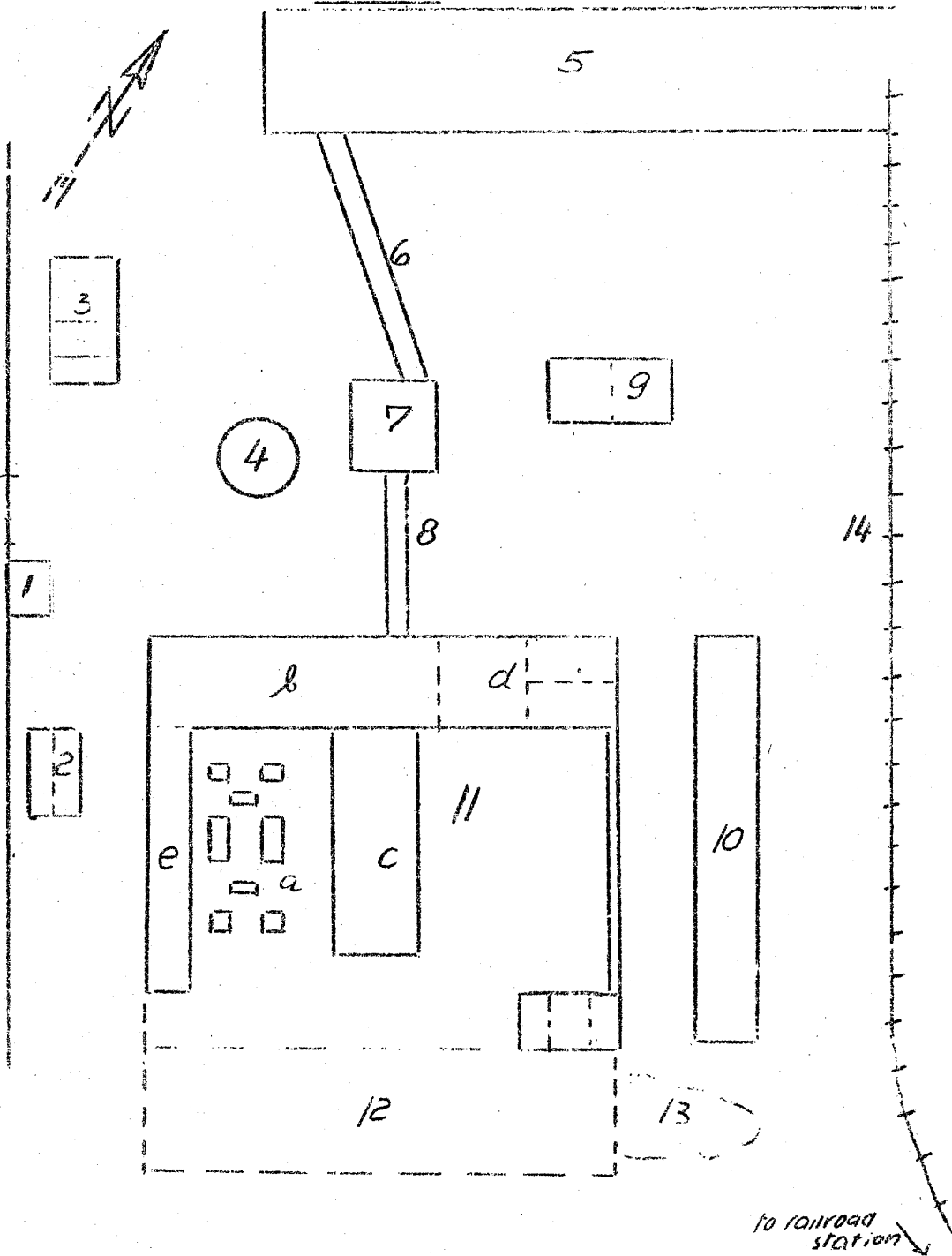
CONFIDENTIAL

CENTRAL INTELLIGENCE AGENCY

25X1

Annex 3

Plant layout of the lower plant in
Baranovich



not to scale

Legend: See report.

25X1

CONFIDENTIAL