

Sketch 1:

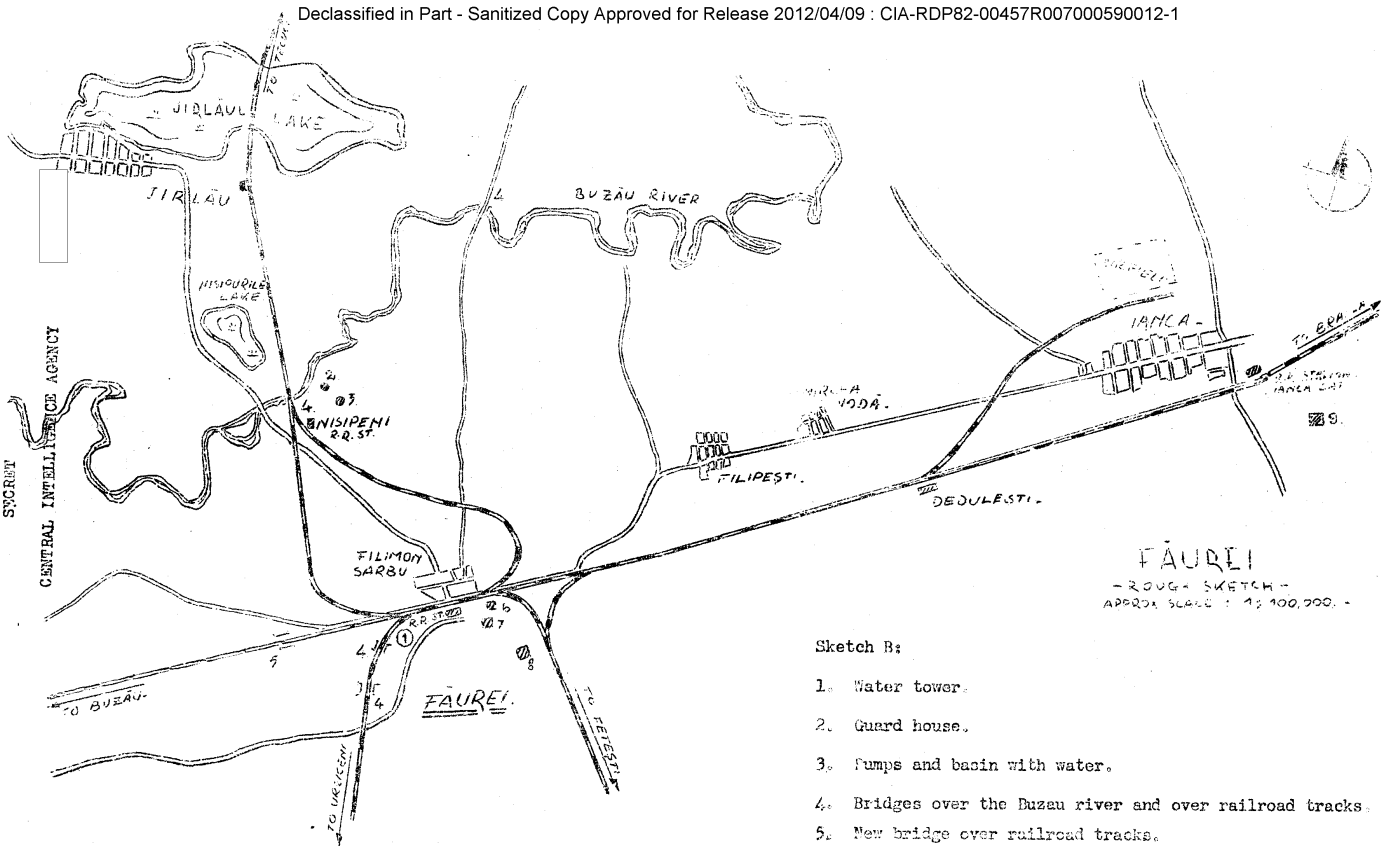
- 1. Grain warehouse.
- 2. New bridge over the Giurel River.

FAUREI - SURAI
RAILROAD -
-ROUGH SKETCH -

SECRET
CENTRAL INTELLIGENCE AGENCY

50X1-HUM

SECRET



SECRET
CENTRAL INTELLIGENCE AGENCY

50X1-HUM

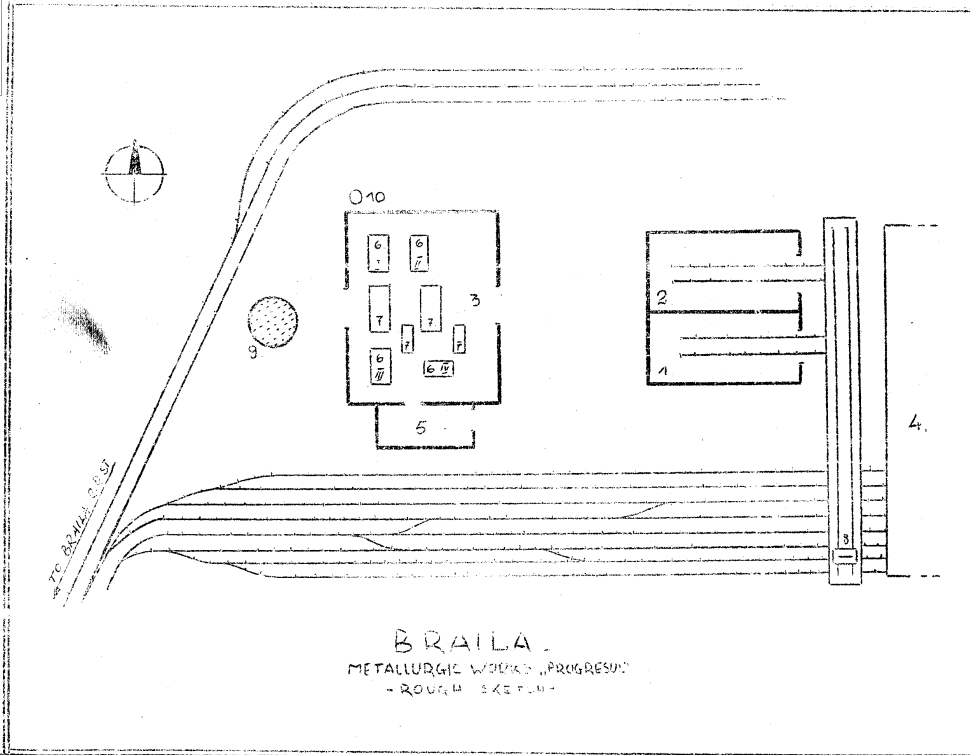
SECRET

FAUREI
- ROUGH SKETCH -
APPROX. SCALE : 1 : 100,000 -

Sketch B:

1. Water tower.
2. Guard house.
3. Pumps and basin with water.
4. Bridges over the Buzau river and over railroad tracks.
5. New bridge over railroad tracks.
6. Coal depot.
7. SMT (Station for Machines and Tractors) Filimon Sarbu.
8. GAS (Gospodariile Agricole de Stat) Filimon Sarbu.
9. SMT (Station for Machines and Tractors), Ianca.

CENTRAL INTELLIGENCE AGENCY

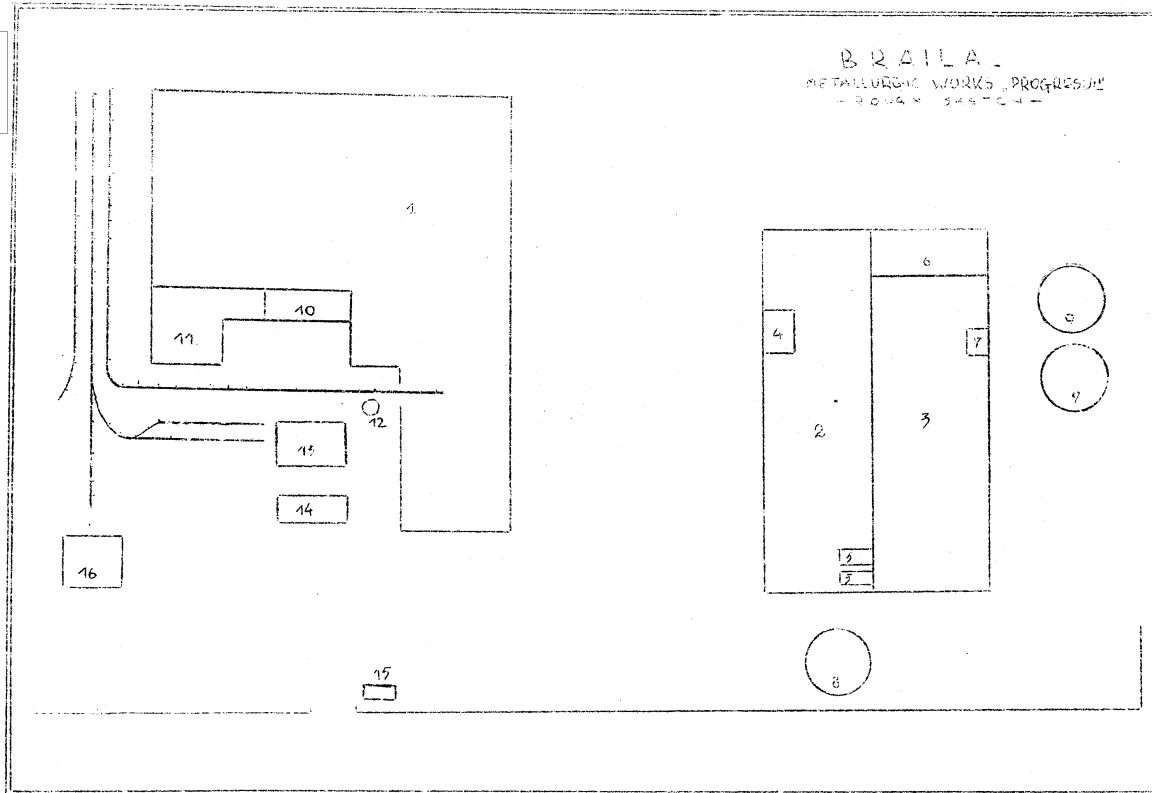


Sketch 6:

1. and 2. Warehouses.
3. New smelting furnace.
4. Chladron.
5. Sleeping quarters and washhouses for workers.
6. Numbers 1, 2, 3, and 4, smelting ovens.
7. Mechanical hammers.
8. Revolving bridge.
9. Underground oil depot.
10. Chimney.

SECRET

SECRET
CENTRAL INTELLIGENCE AGENCY



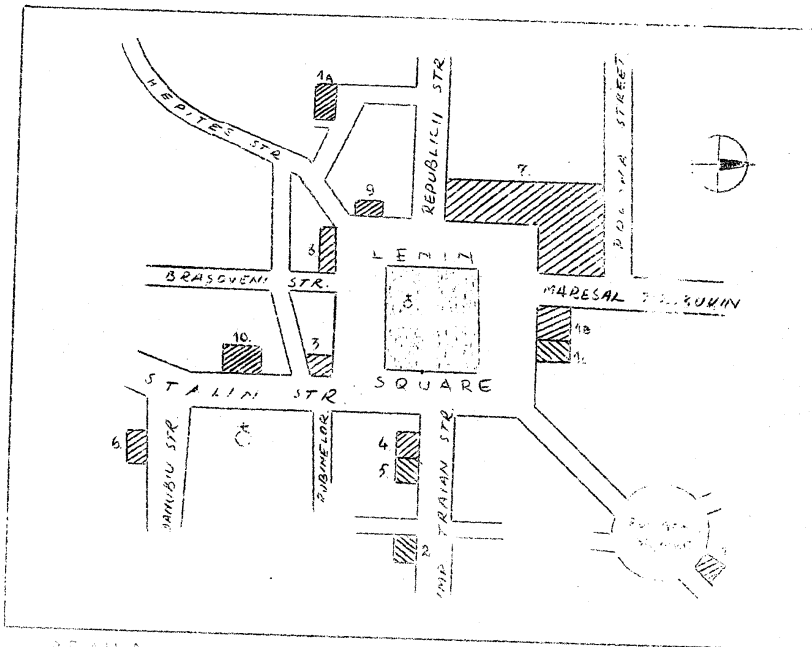
Sketch:

50X1-HUM

1. Foundry.
2. Casting area.
3. Hot steel manufacturing area.
4. Sleeping quarters and wash houses for workers.
- 5, and 6. Two re-baking ovens.
7. Siemens Martin oven.
8. Ten ton capacity underground oil depot.
9. Two 20-ton capacity each oil depot.
10. Offices.
11. Warehouse.
12. Water reservoir.
13. Offices for direction and administration.
14. Garage for vehicles.
15. Guard house and entrance gate.
16. Electrical workshop.

SECRET

SECRET



Sketch E:

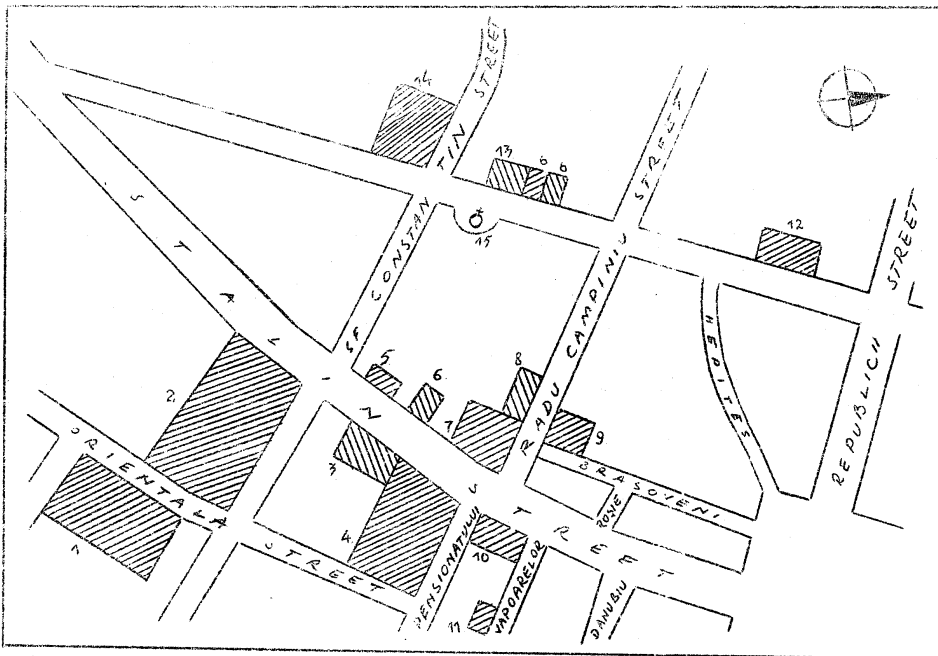
1. Soviet Army billet area.
 - a. Lyra cinema.
 - b. **Hotel Francez.**
 - c. Soviet Commandatura.
2. Rumanian Army, Palace Generala.
3. Rumanian Communist Party.
4. Credit bank.
5. Telephone company.
6. Post Office.
7. City Hall.
8. National Bank.
9. Militia School.
10. Building of the state bank, formerly the Soviet Commandatura.

CENTRAL INTELLIGENCE AGENCY

SECRET

50X1-HUM

SECRET
CENTRAL INTELLIGENCE AGENCY

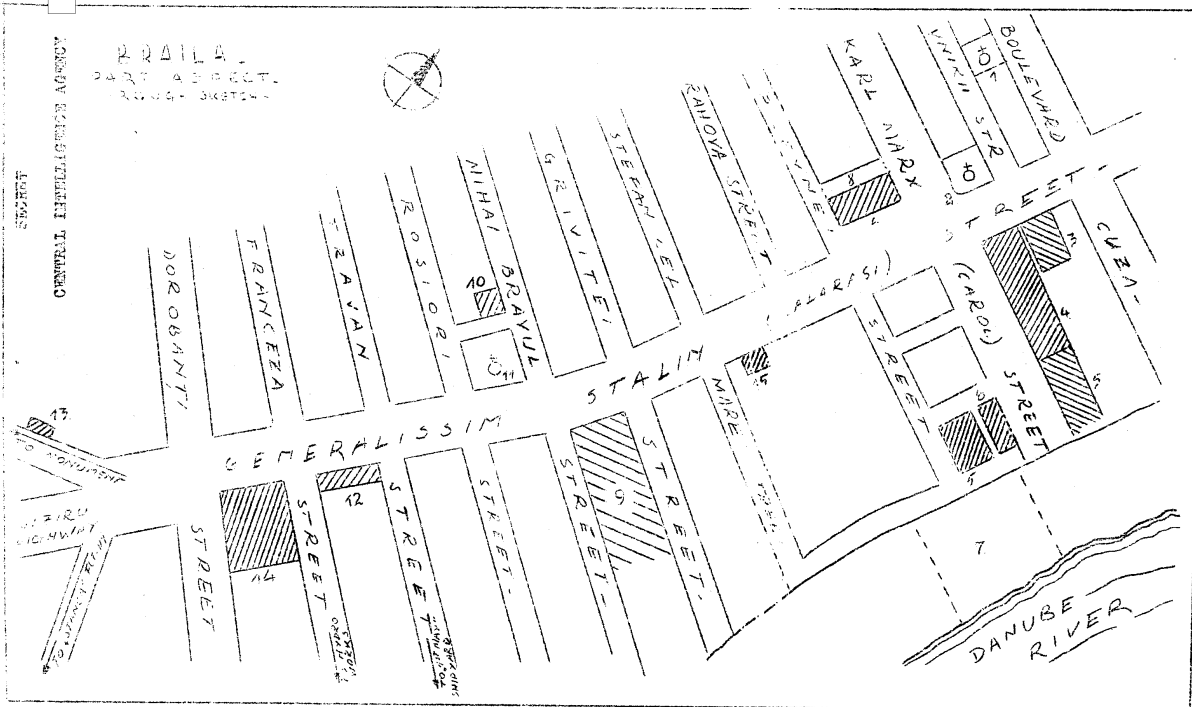


BRAILA
PART ASPECT -
ROUGH SKETCH -

Sketch P:

1. Fire station
2. Prefecture of the district.
3. A building. (no details).
4. Militia.
5. Public Courthouse.
6. Rumanian army.
7. Social Insurance building.
8. UFDR.
9. Boys high school.
10. Old post office.
11. Militia post.
12. Security.
13. Rumanian "Territorial Circle".
14. Soviet Army.
15. St. Nicholas Church.

SECRET

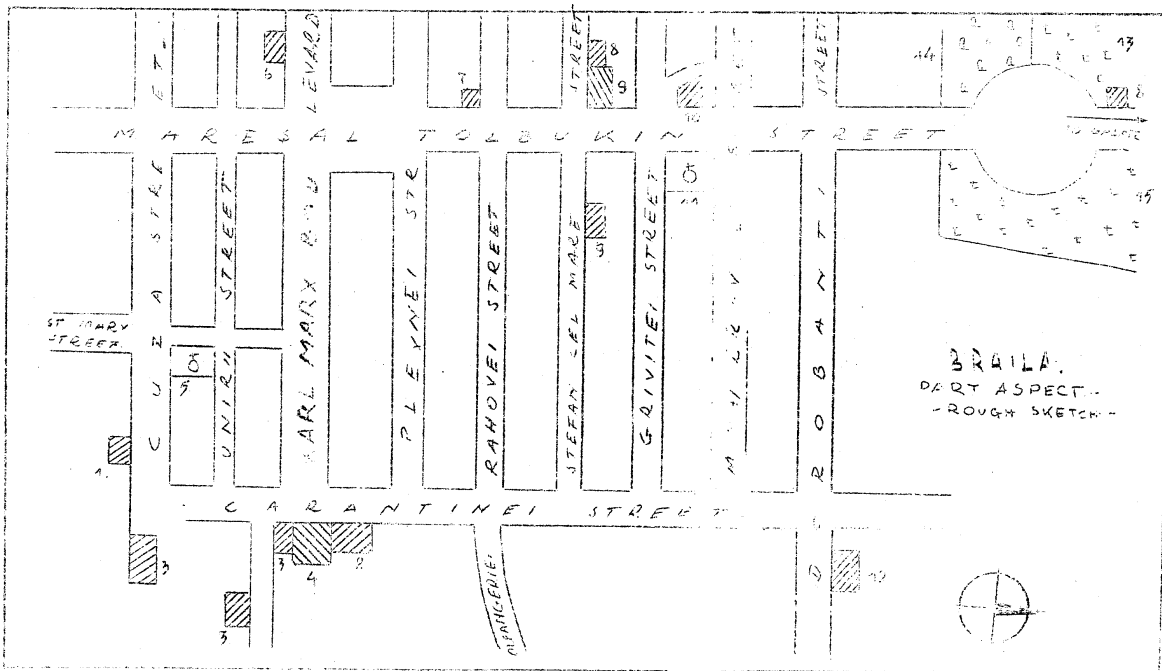


Sketch G:

1. Protestant Church.
2. St. Spiridon Church.
3. Electric Power station.
4. Technical High School for girls.
5. Offices of the Viitorul shipyard.
6. Soviet Army area.
7. Marshes.
8. Soviet trucks in this area enclosed with barbed wire.
9. State hospital.
10. Gospodaria Agricola de Stat (GAS), Braila.
11. St. Paraschiva Church.
12. Primary school no. 8.
13. Spiru Maret school.
14. Tramway depot.
15. Militia post.

CENTRAL INTELLIGENCE AGENCY

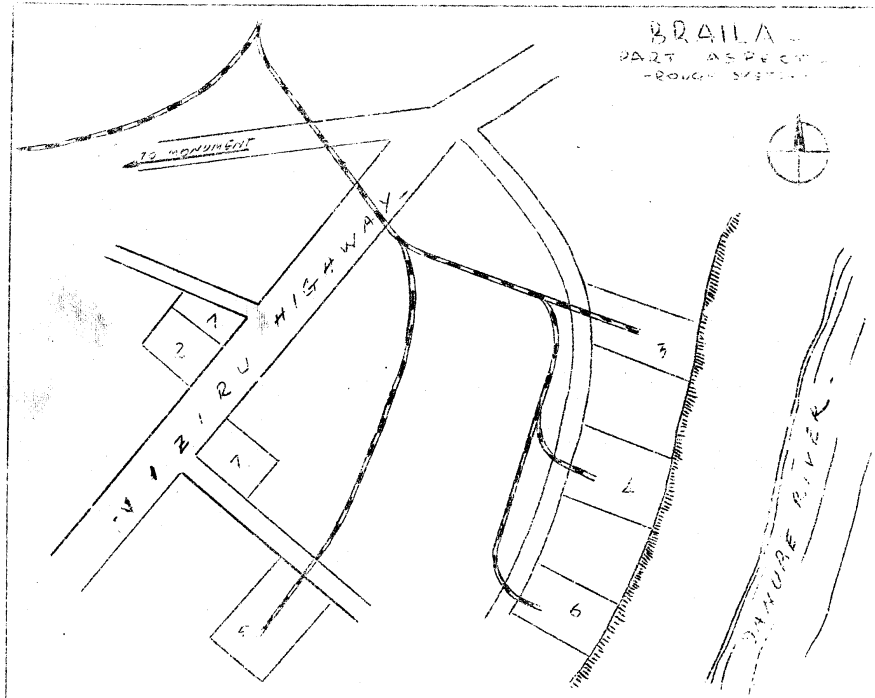
50X1-HUM



Sketch H.

1. Soviet Army.
2. Soviet Army and tanks.
3. Romanian Army.
4. Penitentiary.
5. Veterinary hospital.
6. St. Mary's Church.
7. Greek refugee Center.
8. Militia posts.
9. Primary school for boys and girls.
10. New industrial areas under construction.
11. St. John's church.
12. Slaughterhouse and ice factory.
13. Catholic cemetery.
14. Mohammedan cemetery.
15. Orthodox cemetery.

CENTRAL INTELLIGENCE AGENCY



SKETCH 1:

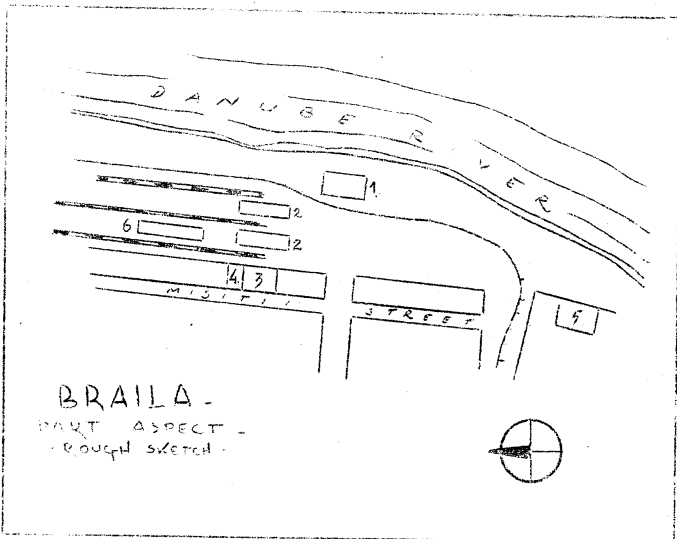
1. Soviet troops and tanks.
2. Romanian troops.
3. Factory "Orszul".
4. Cement factory "Stanca".
5. "Industrei Sarmei" (Wire factory).
6. Sovrom Shipyard.

50X1-HUM

SECRET

SECRET

CENTRAL INTELLIGENCE AGENCY

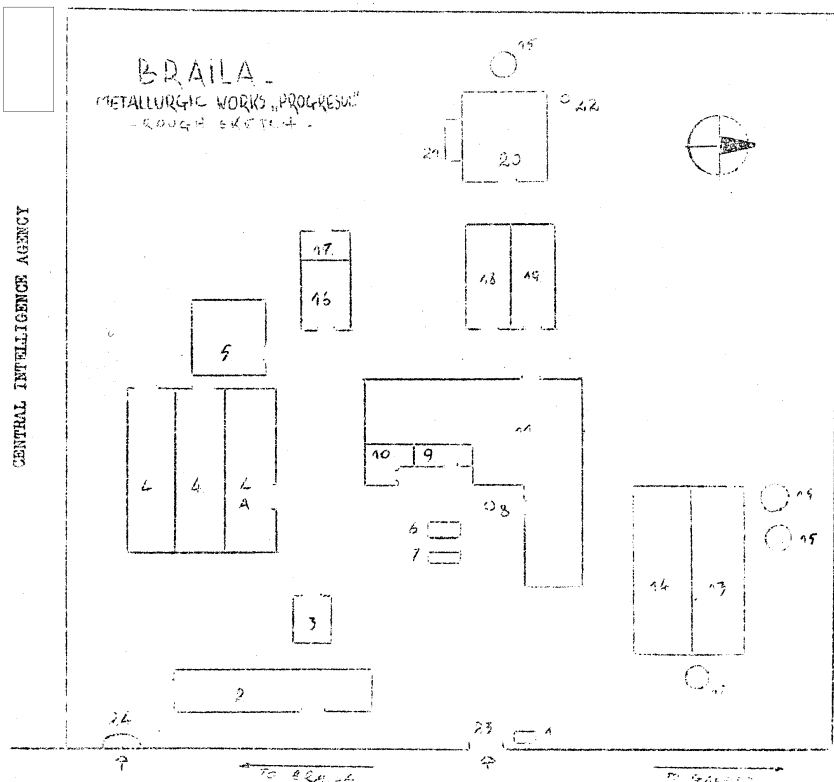


Sketch J:

1. Pier for ships.
2. New warehouses "ceremag" type.
3. Rumanian troop area.
4. Ammunition warehouses.
5. Violatos flour mill.
6. Soviet troops.

50X1-HUM

SECRET



Sketch N:

- | | |
|--|--------------------------------|
| 1. Security offices and gate. | 20. Smelting furnace |
| 2. Canteen. | 21. Social insurance building. |
| 3. Electric workshop. | 22. Chimney. |
| 4. Heavy Mechanical shop. a. industrial area. | 23. Gate for pedestrians. |
| 5. Offices. | 24. Gate for vehicles. |
| 6. Directorate. | |
| 7. Garages. | |
| 8. Water reservoir. | |
| 9. Offices. | |
| 10. Warehouses. | |
| 11. Cauldron. | |
| 12. Underground oil reservoir. | |
| 13. New steel manufacturing area. | |
| 14. Casting area. | |
| 15. Underground oil reservoirs. | |
| 16. Light mechanical workshop. | |
| 17. Offices. | |
| 18. Warehouses. | |
| 19. Warehouses. | |

50X1-HUM

SECRET