

CONFIDENTIAL not to scale

25X1

SECRET

CONFIDENTIAL

Rolling Mill (No. 22 of Annex 1)

Resista Works

25X1

Annex 2

Legend:

- a Three coke ovens
- b Two finishing machines
- c Two electric cranes on traveling bridges 24-ton carrying capacity each
- d Heavy plate rolling train five to six rolls
- e Sheet rolling train 4 rolls
- f Rolls for round iron exceeding 6 mm in diameter. 70 meters long
- g Six electric pumps (roll cooling water)
- h Six drilling machines
- i Office
- j Magnetic crane
- k Grab crane
- l Two circular saws
- m One crane on traveling bridge, 20 tons
- n Two smokestacks

25X1

SECRET

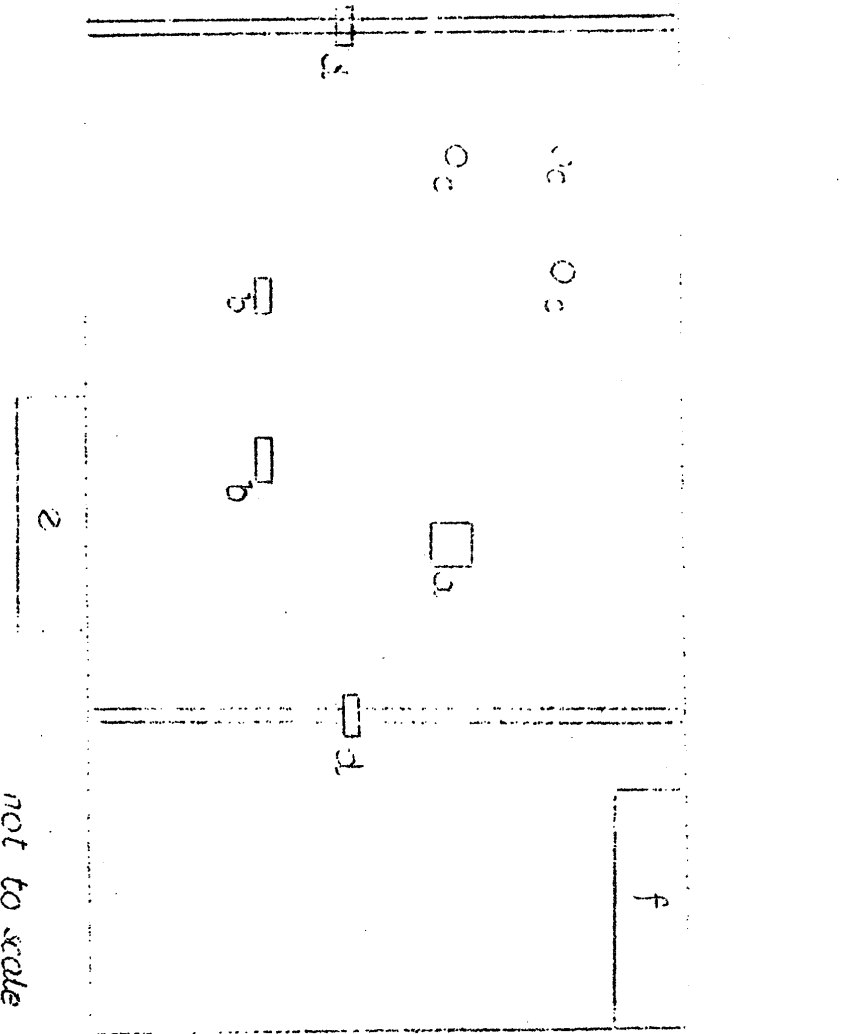
CONFIDENTIAL

Resista Works

Wheel Disk Rolling Mill (No. 20 of Annex 1)

25X1

Annex 3

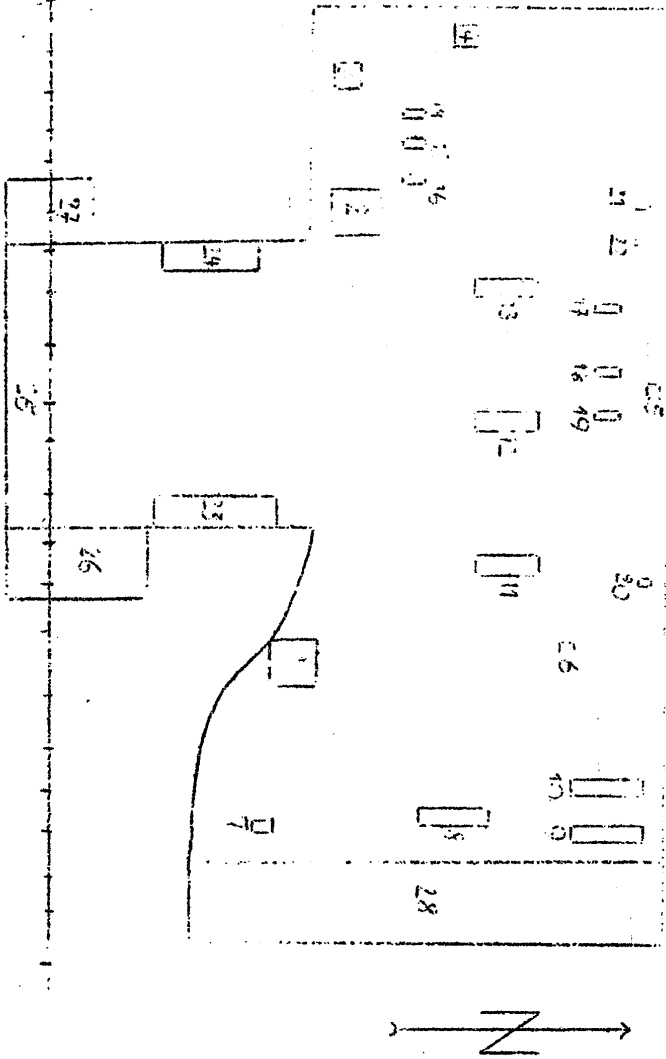


Legend:

- a Pneumatic hammer, 18 tons
- b Two smaller pneumatic hammers
- c Three vertical electric furnaces, 1.5 meters in diameter, 3 meters high
- d Two medium cranes
- e Electric compressor (in annex building 28x5 meters)
- f Office building

CONFIDENTIAL

not to scale



Legend:

- 1-2 Two gas furnaces for annealing work pieces which then are processed by the hydraulic presses or steam hammers
- 3-4 Two gas furnaces, 3x2 meters
- 5 One fuel oil furnace, 1x1 meters
- 6 One fuel oil furnace, 2x1 meters, for spring plates
- 7 Hydraulic presses, 24 tons, particularly for manufacturing oil-drilling implements
- 8 Three centrifugal presses
- 9-10 Three large steam hammers
- 11-12-13 Three electric hammers
- 14-15-16 Three small steam hammers
- 17-18-19 Special electric furnace, 9x2 meters, with three chambers (especially for weapon production)
- 20-21-22 Two gas furnaces, 6x2 meters and 15x4 meters
- 23 Two steam generator boilers, coal firing for the steam hammers, 6x6x6 meters
- 24-25 Locksmith's shop, 30x6 meters, three drilling machines etc.
- 26-27 Second floor: Office of the tool shop
- 28

not to scale
CONFIDENTIAL

25X1

SECRET

CONFIDENTIAL

Reshta Works

Tool Shop (No. 32 of Annex 1)

25X1

Annex 4

25X1

SECRET

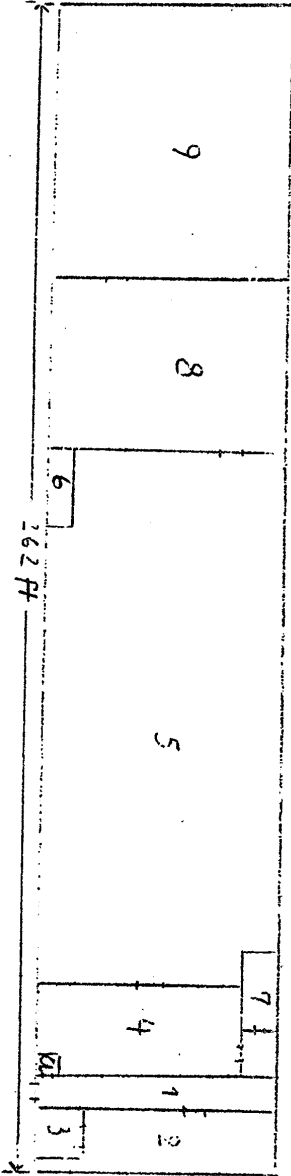
CONFIDENTIAL

Resita Works

Tool Factory (No. 36 of Annex 1)

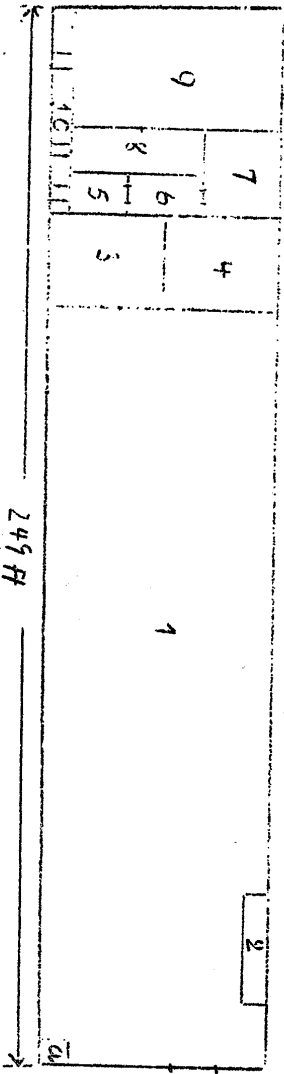
25X1

Annex 5



Legends:

- 1 Corridor and well of staircase, 15x2 meters
- 2 Laboratory, test station 11x 5 meters
- 3 Storage place of the laboratory
- 4 Grinding shop, 13x6 meters, one German precision grinding machine
- 5 Machine shop, 35x15 meters. 20 lathes, eight small grinding machines etc.
- 6 Cabin, 4x2x5 meters, with modern special machine and centering machine
- 7 Storage room for special steel, 8x2 meters
- 8 Test shop for finished products
- 9 Assembly shop with various special machines



- 1 Machine shop, 53x15 meters, 30 lathes, 10 drilling machines, milling machines
- 2 Tool store room, 6x15 meters
- 3 Office of the foremen, 8x6 meters
- 4 Store room for materials
- 5-6-7 Three office rooms
- 8 Technical office, 9x3 meters
- 9 Drafting room, 13x8x5 meters
- 10 Corridor

CONFIDENTIAL

not to scale

CONFIDENTIAL

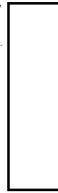
SECRET

25X1

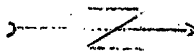
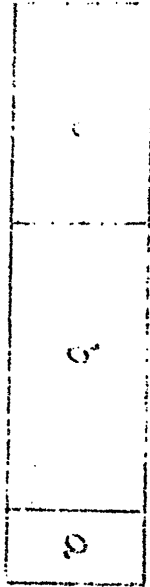
Resista Works

Technical Designing Office of the Bridge Building Department (No. 50 of Annex 1)
Bridge-Building Workshop (No. 35 of Annex 1)

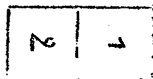
Annex 6



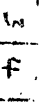
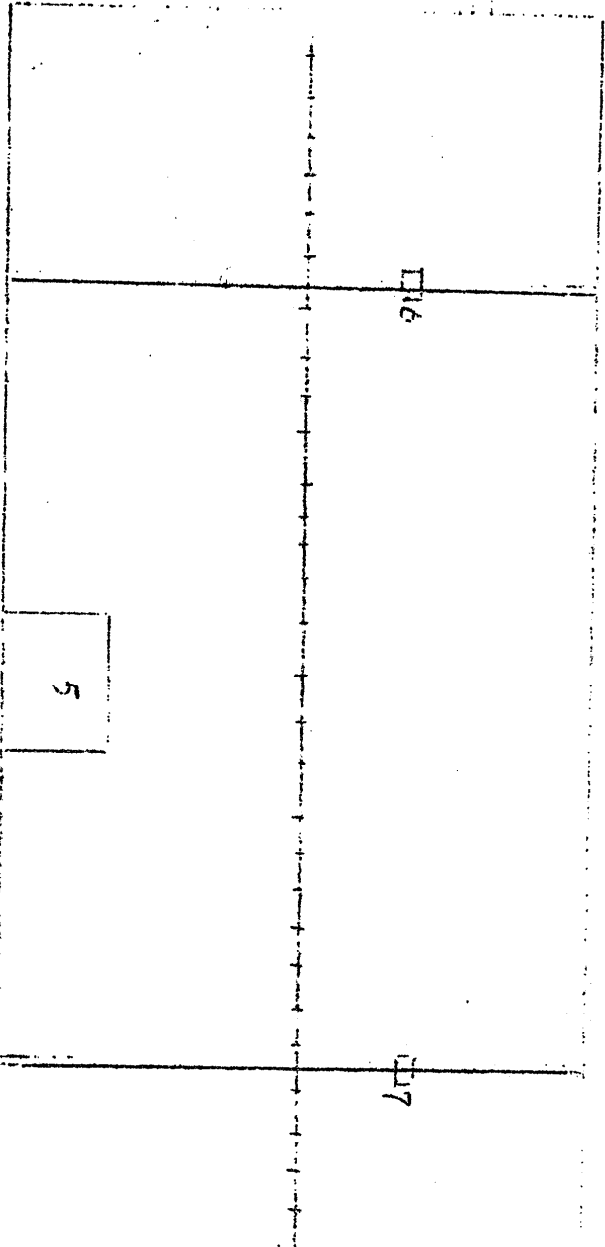
25X1



- Legend:
- a Office
 - b Drafting room
 - c Storage of material

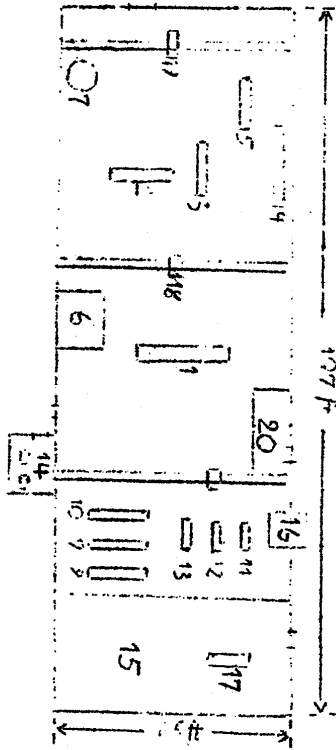
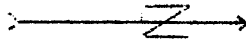


- Legend:
- 1 Office of the engineers
 - 2 Office of the engineers
 - 3-4 Office of the foremen
 - 5 Transformers
 - 6 Crane on traveling bridge 15 tons, manufactured by this department
 - 7 Crane on traveling bridge 25 tons



CONFIDENTIAL

SECRET



Scale 1:500

CONFIDENTIAL

- Legend:
- 1-4 Two hydraulic large presses
 - 2-3-5 Three medium size hydraulic presses
 - 6 Gas furnace, 5x4 meters
 - 7 One round open gas furnace, 3 meters in diameter
 - 8-13 Six hydraulic pumps
 - 14 Two ventilators
 - 15 Machine shop
 - 16 Water tank of the hydraulic presses
 - 17 Spring testing machine
 - 18-19 Two cranes, 5 tons, manufactured by the plant
 - 20 Office of the foremen

25X1

SECRET

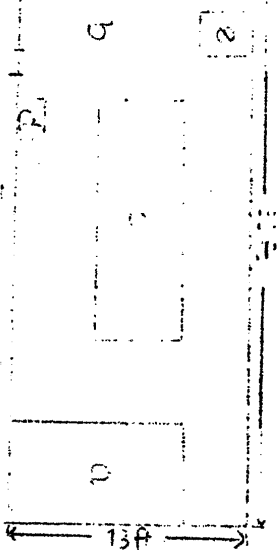
CONFIDENTIAL

Resista Works

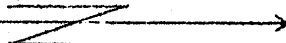
Pressing Shop (No. 68 of Annex 1)

25X1

Annex 7

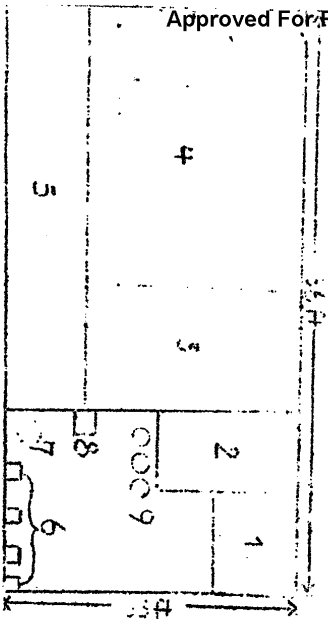


Scale 1:100



- Legend:
- a Office and storage place
 - b Workshop
 - c Table with two electric welding apparatuses
 - d Welding machine
 - e Dynamo and transformer
 - f Crane

tool factory



Scale 1:250

CONFIDENTIAL

old
engineering
works

- Legend:
- 1 Office
 - 2 Washroom
 - 3 Small forge
 - 4 File cutting shop
 - 5 Nickel bath
 - 6 Four gas furnaces
 - 7 Salt bath
 - 8 Electric furnace
 - 9 Petroleum-water-oil bath

SECRET
KESIDA WORKS

25X1

Annex 8



25X1

Welding Department (No. 71 of Annex 1)
Small Steel Hardening Installation (No. 72 of Annex 1)