

Legend to Annex 1

25X1

- A Market square
 B Street to road bridge
 C Aircraft Accessories Plant
- 1 Depot and final assembly
 - 2 Production shops
 - 3 Boilerhouse
 - 4 Lathe department
 - a Foundry
 - b Old forge. Production shops were on the second floor,
 - 5 Carpentry
 - 6 Transformer station
 - 7 Materials depot, offices
 - a Motor vehicle repair shop
 - 8 New forge under construction
 - 9 New workshop
 - 10 Kitchen
 - 11 Declivity
 - 12 Scrap dump

Note: Buildings 1, 2, 4, 4a, and 9 were two-story buildings with flat roofs.

Legend to Annex 2

- A Dwellings
 B Market square
 C To main railroad station
 D Krasnaya Armeiska Street
 E Aircraft Accessories Plant
- 1 and 2 Workshops
 - 3 New building
 - 4 Offices and construction bureaus
 - 5 Final assembly and shipping section
 - 6 Boilerhouse
 - 7 Transformer station
 - 8 New building
 - 9 Punching shop
 - 10 Carpentry
 - 11 Materials depot
 - 12 New forge

All the buildings except 6, 7, and 12 were two-story buildings with flat roofs.

25X1

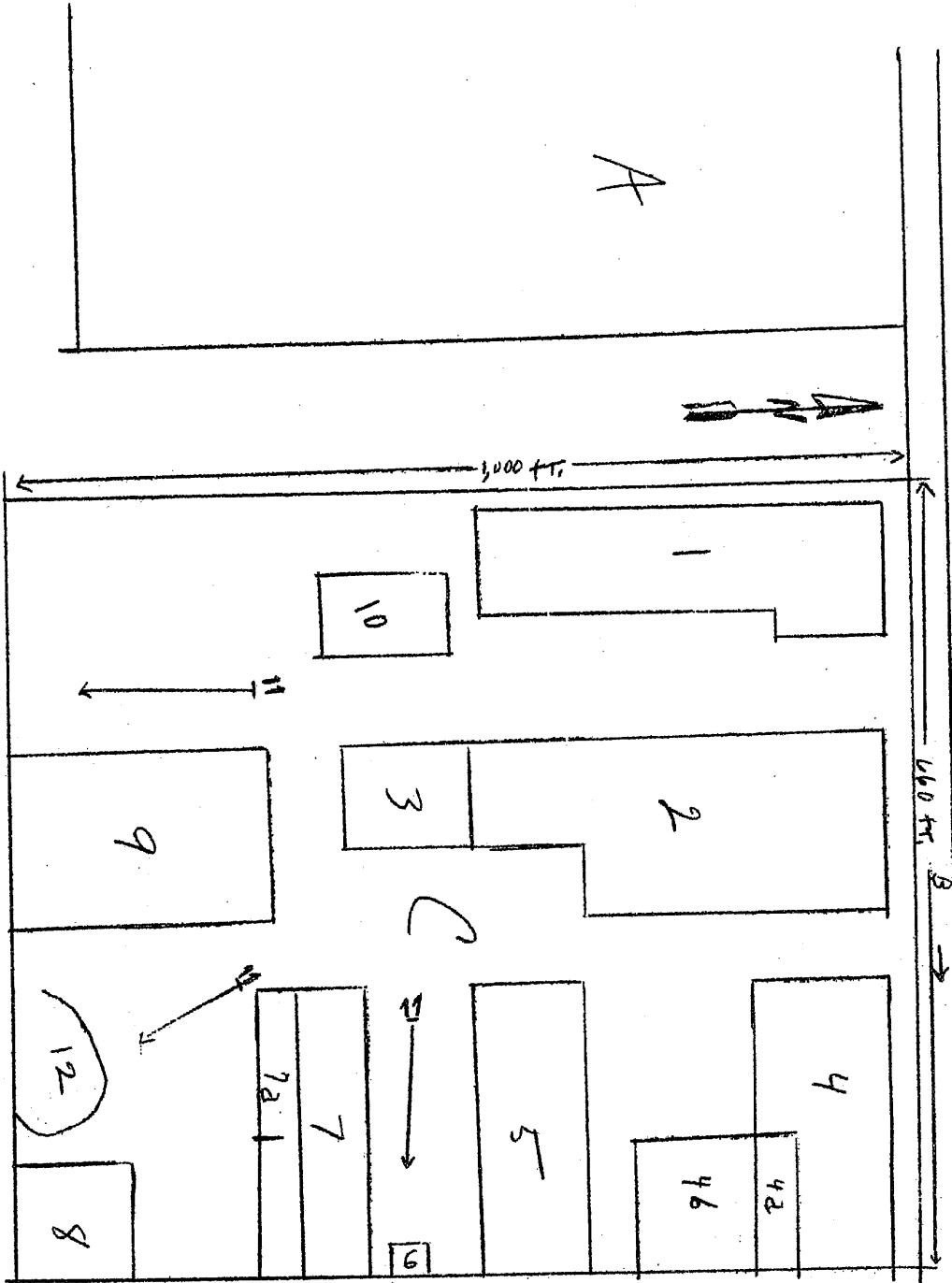
~~SECRET~~

SECRET

CENTRAL INTELLIGENCE AGENCY

Aircraft Accessories Plant in KIEV

Legend: See report



SECRET