

CONFIDENTIAL

REPORT

CD NO. 50X1

COUNTRY Czechoslovakia

DATE DISTR. *1 FEB* 1954

SUBJECT Vorosilov (formerly Skoda) Works/Military Airfield
At Trencianske Biskupice

NO. OF PAGES 12

PLACE
ACQUIRED

NO. OF ENCLS. 5
(LISTED BELOW)

DATE
ACQUIRED

SUPPLEMENT TO
REPORT NO. 50X1

DATE OF IN

THIS DOCUMENT CONTAINS INFORMATION AFFECTING THE NATIONAL DEFENSE OF THE UNITED STATES, WITHIN THE MEANING OF TITLE 18, SECTIONS 793 AND 794, OF THE U.S. CODE, AS AMENDED. ITS TRANSMISSION OR REVELATION OF ITS CONTENTS TO OR RECEIPT BY AN UNAUTHORIZED PERSON IS PROHIBITED BY LAW. THE REPRODUCTION OF THIS FORM IS PROHIBITED.

THIS IS UNEVALUATED INFORMATION

50X1

1. Until the end of 1951, this enterprise was known as the Skoda Works.
For exact location of the Works, see Enclosure B.
2. Production: The Vorosilov Works manufactures complete guns, anti-aircraft guns, complete aircraft and tractor motors, complete Skoda tractors, artillery ammunition, bombs, antitank projectiles, rifle ammunition, antitank mines, hand grenades, antitank rifles, Diesel driven mobile excavators, and iron bridge sections. All material used in this plant was shipped in by rail. The Kladno Iron Works and the Vitkovice Iron Works delivered bar steels ranging from 0.2 cm to 15 cm in diameter, non-ferrous bars of various diameters, miscellaneous plates made of light metal (about 3 by 3 meters, or 2 by 2 meters, or 50 by 50 cm, and about 1 to 2 cm thick). The Kladno Iron Works also delivered various castings and forgings, such as crank shafts for aircraft engines, etc. Each week approximately six carloads of bar steel and castings, and six carloads of other material were unloaded at the plant. The auxiliary material included such items as rubber tires by MATADOR, oxygen bombs, various acids, etc. Each week the enterprise received approximately 40 to 50 carloads of coal from the mines at Handlova, Moravska Ostrava and Most. Finished products were transported, by rail for the most part, from the factory, at the rate of about 60 carloads a week.
3. Completed aircraft engines, packed in special crates, were shipped in railroad cars, or by truck. [redacted], and 50X1 saw these aircraft engines being unloaded at an aircraft factory in Trencianske Biskupice, on the airfield. [redacted] Location of the factory is indicated by the circled number one, Enclosure D, and on Enclosure E. (I do not remember the exact number of aircraft engines produced.)

CONFIDENTIAL

DISTRIBUTION

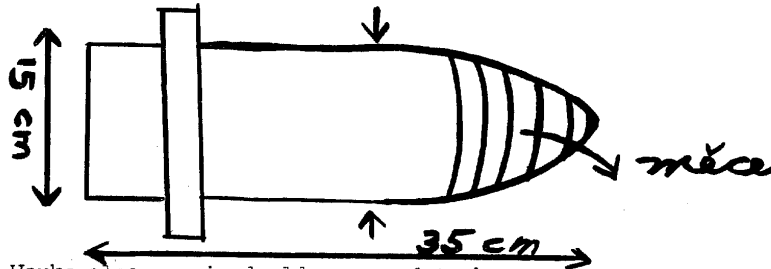
ORR EV

- 2 -
CONFIDENTIAL

50X1

Completed tank engines were crated specially, and shipped by rail to the KRIVAN tank manufacturing plant, the location of which I do not know. The Diesel driven Skoda tractors produced at the Vorosilov Works either have rubber tires, or are of the caterpillar type. Finished tractors are shipped by rail; I am not aware of their final destination, or of the number of tractors produced. The antitank rifles manufactured at the plant are 12 mm and have a magazine for 10 rounds and a collapsible steel bipod. Completed guns, 18.5 cm, 15 cm, and 10.5 cm caliber were shipped from the enterprise by caterpillar tractor to Trenchin, and some were loaded directly onto railroad cars.

I also saw guns loaded at this plant which resembled those pictured in the Russische Artillerie handbook, illustration eight. Artillery projectiles were shipped by rail in wooden crates. Each crate carried one projectile and weighed about 80 kilograms. These projectiles were shaped approximately thus:



The Vorosilov Works also repaired old guns and tanks. I observed four-barrelled 6 cm antiaircraft guns standing in the courtyard. The guns were mounted on a rubber tired gun mount, and could be dismounted from it at will. They had been shipped to the factory for repair.

Completed excavators were shipped, one a week, from the factory by rail.

4. Technical equipment: The entire enterprise is equipped along modern lines. Subterranean workshops have electric ventilators, elevators, and neon (fluorescent) lighting.

The workshops have mobile cranes and very good machinery. A public address system is installed in every room in the factory, and all telephone cables are buried in the ground. The enterprise has a branch railroad line, and the tracks are arranged so that each major assembly shop has the use of a separate track. Small battery-operated factory trucks, called "Jesterky", (salamanders), are used for transporting material from one shop to the other. The factory also owns trucks and buses for conveying workers to and from work. For description of buildings and installations see Enclosures A and C.

5. Personnel: The enterprise management is located directly within the factory. The entire enterprise employs about 9,000 workers, in addition to apprentices. They are divided approximately as follows: 3,000 skilled workers, 2,000 women, 600 clerks, and the remainder, auxiliary hands. There are also several Soviet engineers; two of them are (fnu) Krnov, and (fnu) Vasilovic.
6. Wages: An auxiliary worker received 3,500 crowns a month, a retrained worker about 5,000, and a skilled worker about 7,000 to 8,000 crowns "take-home" pay per month.
7. Political Affiliation: About 70 per cent of the personnel at the plant are Communist Party members; of these only about 30 per cent are "true" to the regime.
8. Shifts: The factory operates on a three-shift system.

CONFIDENTIAL

- 3 -
CONFIDENTIAL

50X1

9. Approaches to the factory: /See Enclosure A/.
10. Security: The enterprise has about 30 guards who are on duty at the gatehouse, wear green uniforms with red shoulder boards, and are armed with pistols. There is also a factory militia whose members wear dark blue overalls, and a red arm-band on the left sleeve. The militia is armed with rifles. I do not know the numerical strength of the militia. Militia members attend regular training sessions held in a training field near the factory (and belonging to it). In addition to the above security forces, there is a permanent military guard assigned to the factory. This unit commutes from Trancin and consists, in all, of one plus one plus 20 men /sic/. The soldiers guard the subterranean workshops and patrol the outside of the factory premises. There are, besides, six SNB members at the enterprise, whose function it is to guard the factory. The enterprise fire department consists of 30 men; its equipment consists of a motor pump.
11. Miscellaneous: Water used by the Vorosilov Works was supplied by the waterworks /sic/, and the hydroelectric plant supplied the motive power used throughout the enterprise.
12. Worker Morale: For the most part, the workers were dissatisfied, because, compared to the relatively heavy work load, their earnings were low. The Communist management tried very hard to disseminate Communist propaganda by use of the public address system, and during the weekly political training, attendance at which was compulsory. Communist Party members held special membership meetings at the factory.

Toward the end of March 1952, a serious explosion in the factory resulted in the death of about 150 people, and the injury of about 600 more. The cause of the explosion was not determined, though the State police held hearings throughout the factory, and several people were arrested. The site of the explosion was an underground workshop /see Enclosure A, circled number 39/. Damage to the shop was so great that it was still out of commission as late as [redacted] 50X1

Military Airfield in Trencianske Biskupice

50X1

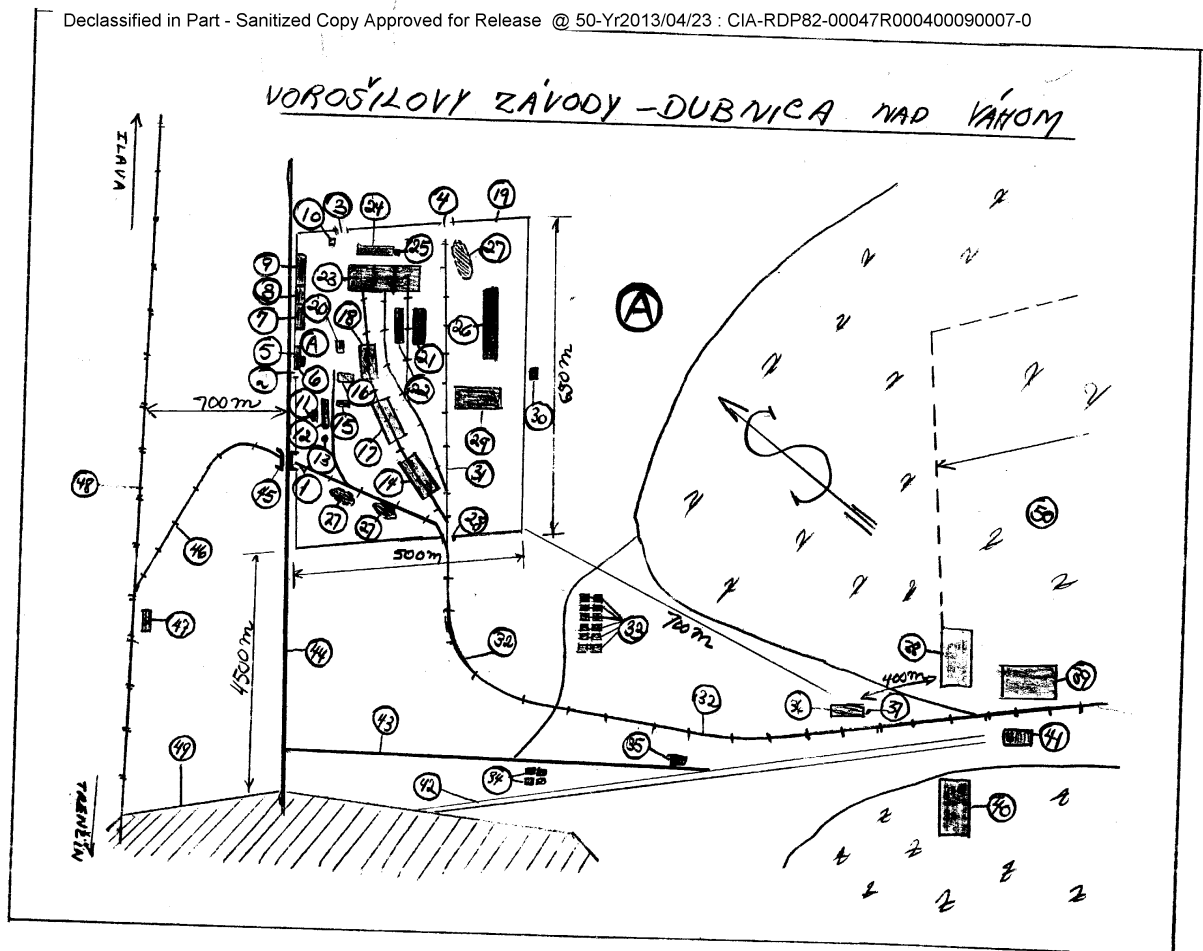
13. /For exact location of this airfield see Enclosure D./ [redacted] to this field, specifically to the factory which is part of the field /see Enclosure E/.

- end -

- ENCLOSURES: A: Detailed sketch-map of Vorosilov Works, with legend
B: Sketch-map of Trencin area, showing Vorosilov Works
C: Sketch-map of the underground shop of the Vorosilov Plant, three levels, with legend
D: Sketch-map of Trencin area showing Military Airfield, Trencianske Biskupice
E: Sketch-map showing details of Military Airfield, with legend.

742.13 27M
742.11 27M
743.281 27M
742.17 27M
742.14 27M
741.51 27M
9/742.1 27M
743.15 27M
741.15 27M
451 27M

CONFIDENTIAL



CONFIDENTIAL

CONFIDENTIAL

50X1

ENCLOSURE (A)

CONFIDENTIAL

Page -2-

Legend: Enclosure A: Vorosilov Plant in Dubnica nad Vahom

1. Factory branch line entrance: iron gate, constantly closed
2. Main entrance to the factory: iron gate. Above the portal there is a sign reading "Vorosilov Plant", and above the inscription a large red star is mounted.
3. Emergency entrance to the plant: constantly closed
4. Entrance to the factory proper: iron gate, constantly closed
5. Gatehouse near the main gate, brick, with level concrete roof. Three members of the enterprise guard and one SNB member are on permanent duty at this post
 - A. Firefighting tower, 20 meters high; together with the gatehouse, this building measured about 15 by 6 meters
6. Garage for factory automobiles: one-story brick building with flat concrete roof, 20 by 12 meters
7. Garage for trucks: same as above, but 40 by 12 meters
8. Enterprise kitchen, dining room and cultural rooms: one-story brick building with flat concrete roof, 40 by 12 meters
9. Administration building: two-story brick building with tile roof, 70 by 12 meters
10. Wooden sentry box, 2 by 2 meters
11. Offices of the building superintendent: one-story brick building with tile roof, 20 by 6 meters
12. Production shop: one-story steel and cinderblock structure, 70 by 20 by 20 meters. This shop has a mobile crane, and produces such items as warheads for artillery projectiles, steel outer covers for bombs, and other projectiles. All necessary machines for this type of operation are represented in this shop
13. Sheet metal chimney, about 30 meters high
14. Production shop: steel and concrete construction with a slightly sloping glass roof, 100 by 30 by 25 meters. This shop produces excavators, bridge sections, and mobile cranes
15. Brick production shop with a roof in the shape of several inverted "V"'s: 60 by 20 by 15 meters. This shop produces shell cases for artillery projectiles and small mines
16. Planning section: three-story brick building with tile roof, 80 by 15 meters
17. Production shop: steel and concrete construction, 100 by 40 by 30 meters. The roof is glass and is shaped as follows: [redacted]. This shop produces aircraft and tank engine parts, and other parts. The shop is equipped with lathes, milling machines, shapers, drills, presses and mobile cranes. A railroad branch line also passes through the shop
18. Production shop: steel and concrete construction with flat glass roof, 70 by 35 by 25 meters. This shop produces gun barrels and repairs guns. The shop has large lathes, milling machines, shapers, and mobile cranes.
19. Brick wall, 2 meters high, surrounding the enterprise. Barbed wire is strung along the top of the wall
20. Clothing warehouse (for blankets, bed linen, beds, etc.): two-story brick building with tile roof, 35 by 15 meters
21. Foundry: steel and concrete shop with glassed-in roof, 60 by 30 by 17 meters
22. Pattern shop: same as item 21
23. Concrete underground shop: [for detailed drawing see Enclosure (C)]. The shop has railroad tracks, and large electric elevators convey finished products to the surface. There is also a large electric ventilator.
 - A. This section, equipped with large presses, produces various types of wheels
 - B. In this section, where various metal-working machines are arranged in three parallel rows, aircraft and tank engine parts are produced
 - C. This section produces gun parts and special vehicles for transporting artillery ammunition
24. Boilerhouse: one-story brick building with sheet metal roof; 70 by 70 by 20 meters, housing four boilers with automatic stoking controls
25. Metal chimney, about 30 meters high
26. Reinforced concrete production shop, still under construction: 120 by 30 by 15 meters
27. Coal dump
28. Entrance for the factory railroad branch line: iron gates, constantly locked
29. Foundations of a new building, 100 by 30 meters
30. Transformer: brick building, 5 by 6 by 10 meters
31. Several railroad tracks traversing the factory premises
32. Railroad branch line leading to the underground production shops
33. Wooden barracks, covered with tarpaper, each about 25 by 8 meters. These buildings are the quarters for single workers (male and female)
34. Same as item 33, but 25 by 10 meters
35. SNB station: one-story brick building with tile roof, 12 by 8 meters
36. Boiler house: 70 by 20 by 20 meters; brick building with metal roof

CONFIDENTIAL

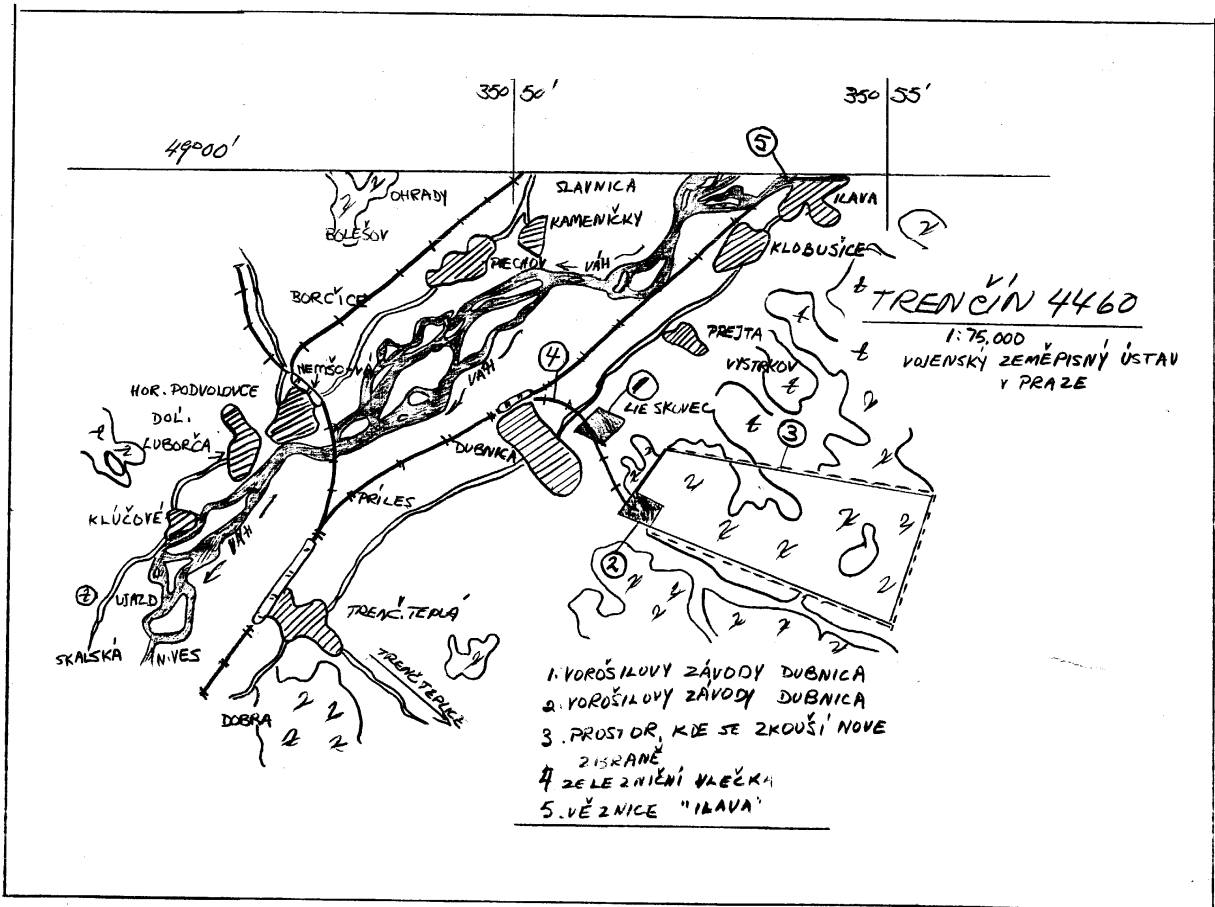
ENCLOSURE (A)
Page -3--

CONFIDENTIAL

37. Metal chimney, approximately 30 meters high
38. Production shop, concrete walls, located under [inside] a hill: 100 by 40 by 10 meters. A branch railroad line leads into the shop, the entrance to which has metal gates which slide back and forth on rollers. The interior of the shop is well equipped with machines, fluorescent lighting, and ventilation. The shop produces aircraft and tank engines
39. Production shop: same as item 38. This is the shop in which the explosion occurred. The shop produced artillery projectiles. Aircraft bombs were filled [loaded] here, as were antitank mines
40. Underground shop, same as item 38. This shop is used as a warehouse for all munitions
41. Two-story brick building with tile roof, 80 by 25 meters: offices, washrooms, and locker rooms
42. Rolled gravel road
43. Asphalt road
44. State asphalt highway
45. Concrete highway bridge
46. Railroad branch line, leading from the station in Dubnica nad Vahom
47. Station in Dubnica nad Vahom
48. Double track railroad line
49. Dubnica obec
50. Factory rifle [firing] range for the testing of new weapons. The range is 3 kilometers long and 2 kilometers wide. During firing, entrance to the range is prohibited.

CONFIDENTIAL

TRENČÍN AREA



ENCLOSURE (B)

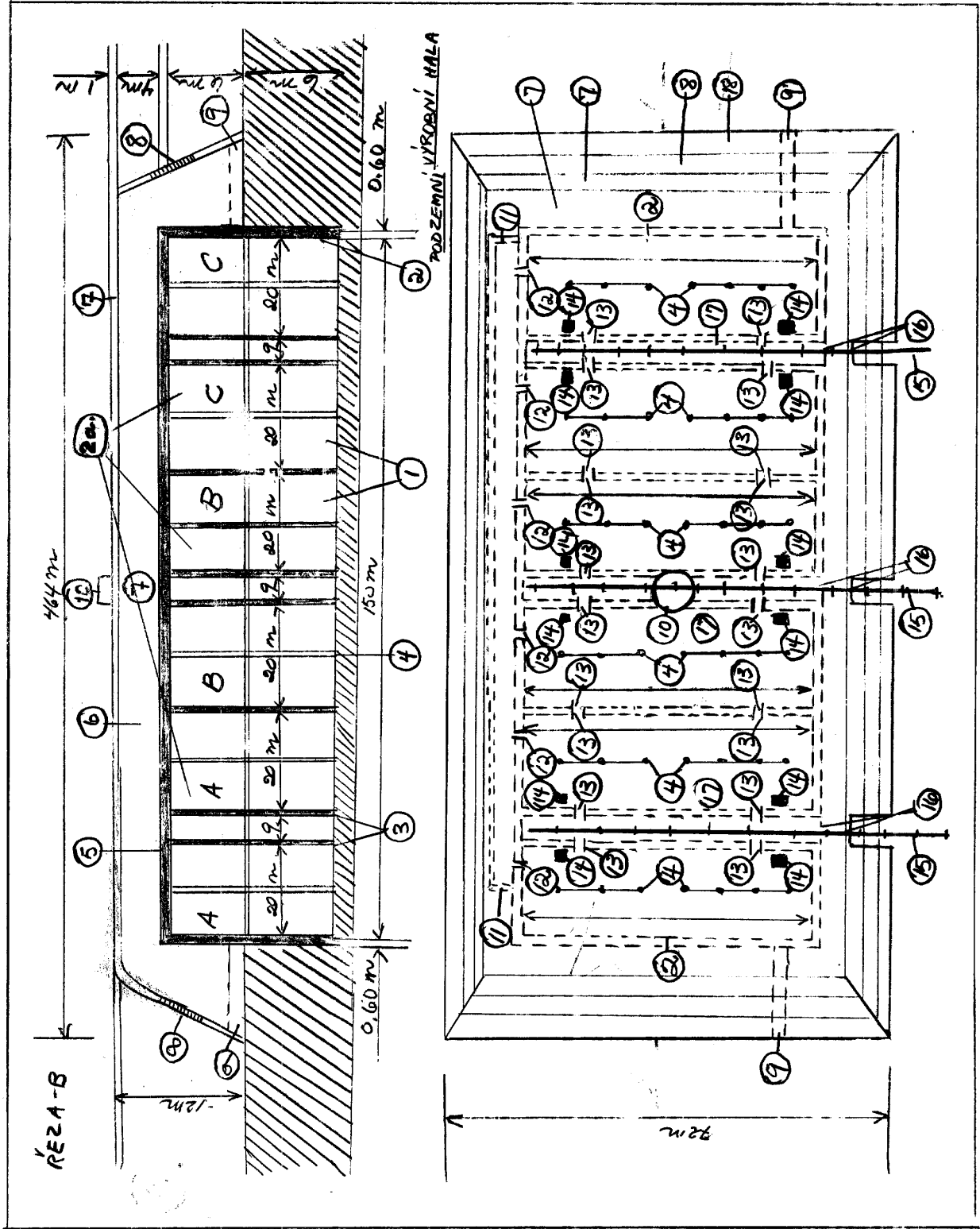
CONFIDENTIAL

50X1

ENCLOSURE (C)
Page -1-

CONFIDENTIAL

UNDERGROUND SHOP, VOROSILOV PLANT,
(THREE LEVELS)



CONFIDENTIAL

ENCLOSURE (C)

CONFIDENTIAL

Page - 2 -

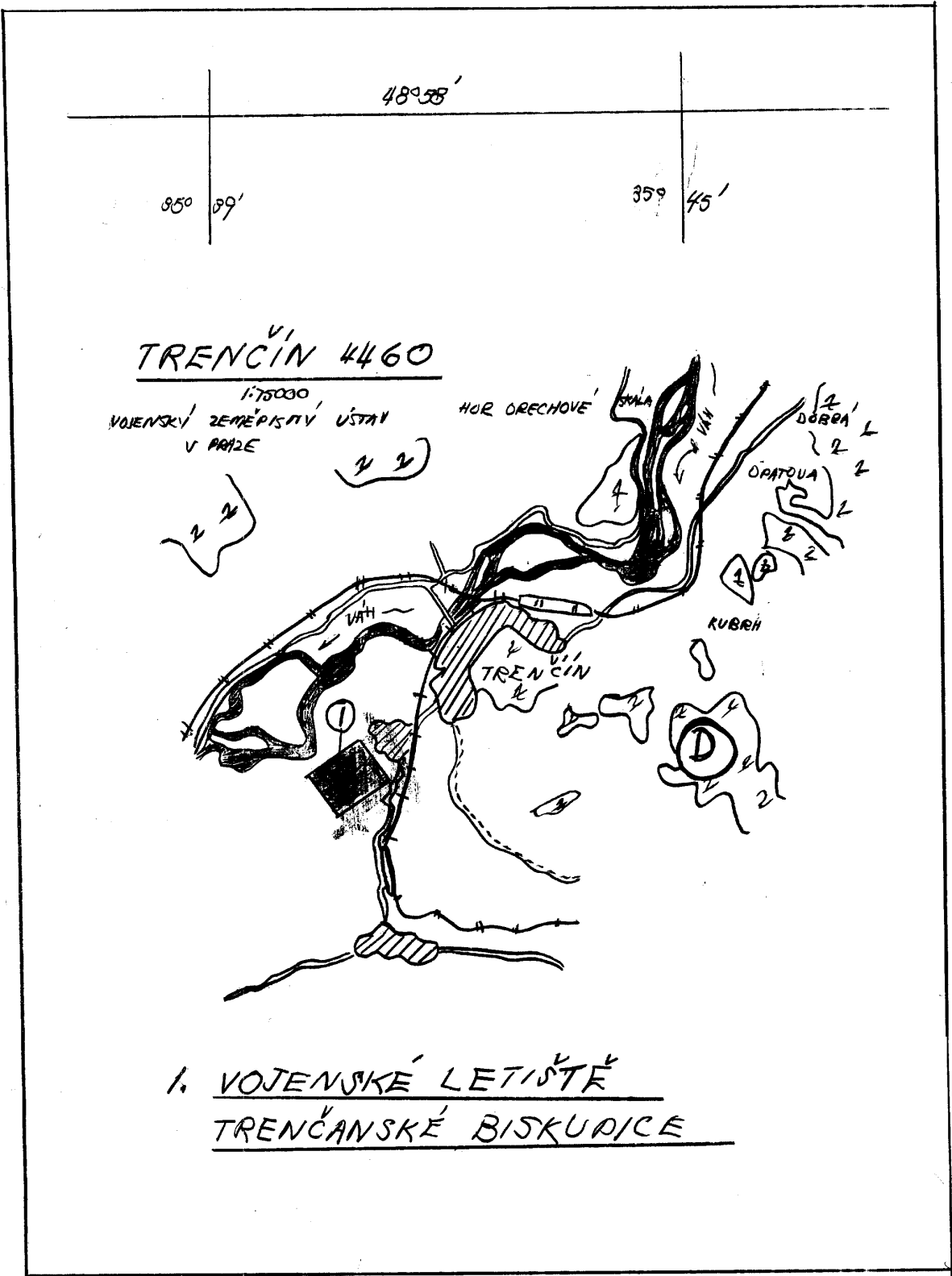
LEGEND: ENCLOSURE C: UNDERGROUND SHOP OF THE VOROSILOV PLANT (three levels)

1. Underground production section and warehouses
2. (a) Production space: metal-working machines, arranged in rows of two in all sections
2. Concrete walls, about 60 cm thick
3. Concrete walls about 50 cm thick; these walls divide the shop into sections
4. Concrete columns, 50 by 50 centimeters: each section has seven such columns
5. Roof of the shop: reinforced concrete, 1 meter thick
6. Earth mound on top of the shop, 4 meters high
7. Reinforced concrete layer, 1 meter thick
8. Area filled with mixture of rock and concrete
9. Concrete emergency exits from the shop, about 1 by 2 meters
10. Electric ventilator, about 2 meters in diameter
11. Passage connecting all sections of the shop, and also used for transporting material from one section to another, about 2 by 2 meters
12. Metal doors leading from each section into the passage
13. Entrances to individual sections: metal doors
14. Electric elevators
15. Railroad branch line
16. Iron gates on rollers
17. Passage for railroad tracks; each shop has mobile cranes
18. Concrete socle around the entire shop area

CONFIDENTIAL

ENCLOSURE (D)

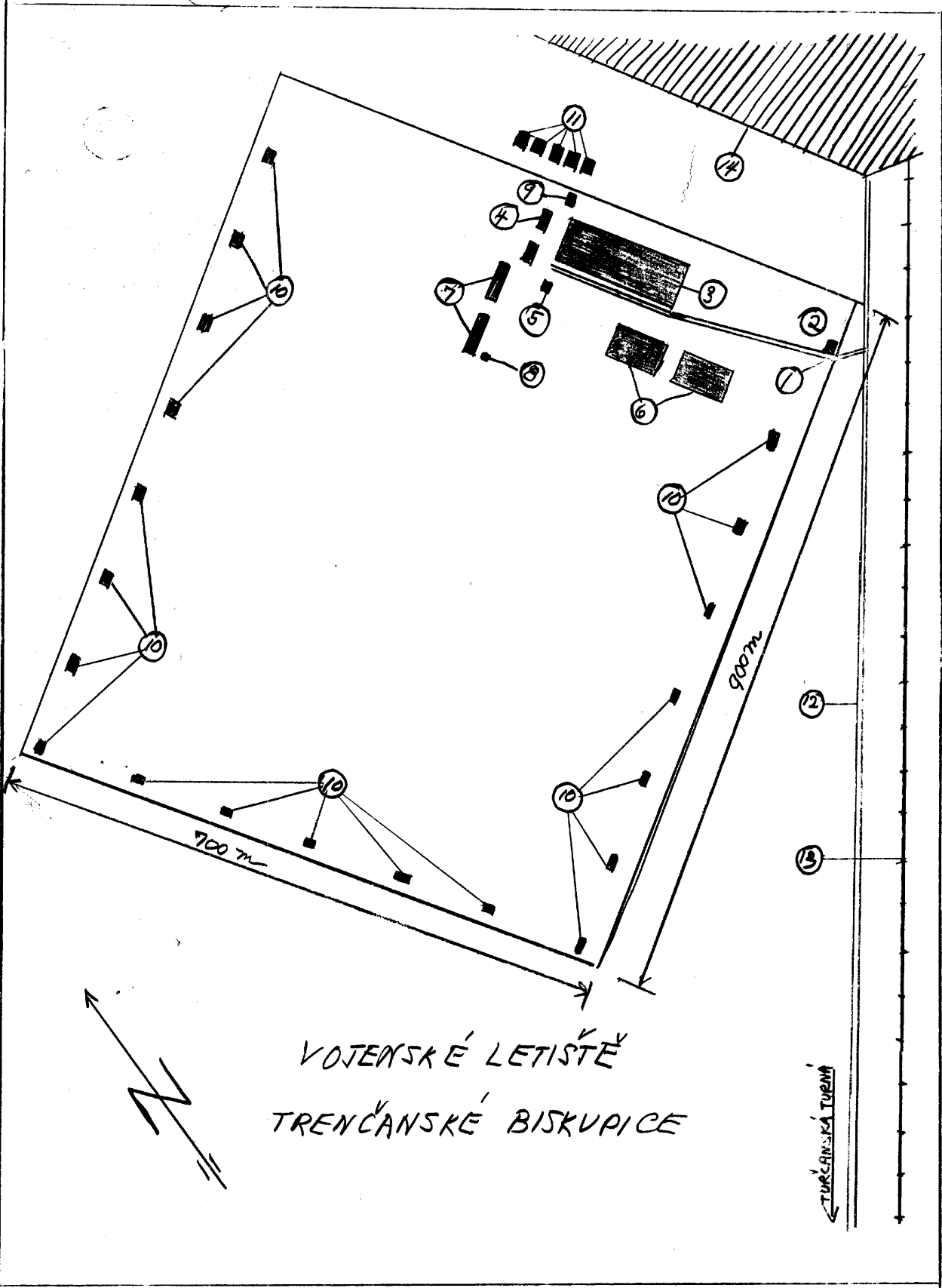
CONFIDENTIAL



1. VOJENSKÉ LETIŠTĚ
TREŇANSKÉ BISKUPICE

1. AIRCRAFT FACTORY ON THE AIRFIELD.

CONFIDENTIAL




MILITARY AIRFIELD

ENCLOSURE (E)

CONFIDENTIAL

Page -2-

Legend: Enclosure E: Military Airfield in Trencianske Biskupice

1. Main entrance to the airfield: iron gates
2. Wooden sentry box
3. Production building; steel and brick construction with inverted "v" shaped roof: 150 by 50 by 35 meters. The shop is equipped with modern milling machines, lathes, drills, grinding machines and planes. Aircraft parts are produced in the shop; (in addition aircraft are repaired, and new aircraft are assembled by this enterprise [sic]). The entire shop is divided into several sections. Civilian employees work here, although the enterprise is under military administration
4. One-story brick buildings with tile roofs, 20 by 8 meters each, housing the offices of the production shop
5. Small one-story building, 5 by 4 meters. I do not know what this building is used for
6. Two hangars with tarpaper roofs. The roofs are shaped like a right triangle ; each building measures 70 by 50 meters
7. Enlisted men's quarters; one-story brick buildings with tile roofs: 50 by 10 meters each
8. Wind direction indicator mounted on a wooden mast [sock?]
9. House with tile roof: about 6 by 6 meters
10. Red and white wooden posts marking the edge of the airfield
11. Residences for airfield employees
12. Rolled path
13. Single track railroad line
14. The obec of Trencianske Biskupice

CONFIDENTIAL