

CONFIDENTIAL

REPORT

50X1

COUNTRY Rumania

50X1

DATE DISTR. 26 Feb. 54

SUBJECT The Ministry of Chemical Industry

NO. OF PAGES 9

DATE OF INFORMATION

REFERENCES:

50X1

PLACE ACQUIRED

THIS IS UNEVALUATED INFORMATION

50X1

1. In November 1952 the Ministry of Chemical Industry (Ministerul Industriei Chimice) was set up as an independent ministry upon the separation of its functions from the Ministry of Metallurgical and Chemical Industry. Part of the former Ministry's personnel remained with the Ministry of Metallurgy and part was absorbed by the Ministry of Chemical Industry. The total number of employees in the new Ministry was about 300 persons.
2. Through control of the factories and enterprises subordinate to it, the Ministry of Chemical Industry controlled production in the chemical industry, cooperating with the Ministry of Defense in the production of strategic war materials.
3. The Ministry of Chemical Industry was located on C.A. Rosetti Street No. 25, in an old eight-story building which was formerly an apartment house. I recall that some of the offices of the Ministry were located on various stories of the building as follows:
 - a. Ground floor: Special Directorate (Directia Speciala)
Directorate of Cadres and Instruction
Cabinet Control Office (Oficiul de Control de Cabinet)

CONFIDENTIAL

- b. **First Floor:** Offices of the Minister
Office of one Deputy Minister (Ion VELEA)
Office of Soviet Advisers
 - c. **Second Floor:** General Directorate of Inorganic Chemistry
(Directia Generala Chimiei de Baza--anorganice)
 - d. **Third Floor:** Directorate of Organic Chemistry (Directia
Generala a Chimiei Organice)
 - e. **Fourth Floor:** General Directorate of Processing (Directia
Generala de Prelucratoare)
Directorate for Planning and Evidence (Directia
Plan si Evidenza)
 - f. **Fifth Floor:** Directorate of Mines Exploitation (Directia
Generala de Exploatare Miniere)
Labor Protection Office (Oficiul Pentru Protectia
Muncii)
 - g. **Sixth Floor:** Office of another Deputy Minister (Engineer
Dimitru CANILA)
Investments Directorate (Directia de Investitii)
Mechano-Energy Directorate (Directia Mecano-
Energetica)
 - h. **Seventh Floor:** Technical Directorate (Directia Tehnica)
 - i. **Eighth Floor:** Typewriter repair shop and storage
4. Until October 1953 the Ministry was guarded on the street by the militia and civilian agents. After that date the guard was abolished and entrance into the building was controlled by the porter-receptionist in the building. Visitors had to show their identity booklets (Buletin de Identitate), state the name of the person they wished to see and the purpose of the visit. While a visitor was in the building his identity booklet was retained by the porter-receptionist.

Organization

5. Executive power was vested in the Minister, Mihael FLORESCU, who was assisted by two Deputy Ministers, Ion VELEA and Eng. Dimitru CANILA, and two Soviet Advisers, KORSUNSCHI (Korsunski) and KAIMANACOV (Kaimanakov).

50X1

50X1

The Ministry was divided into two main parts: (a) Production Directorates (Directii Productive), each subdivided into various Services (Servicii) or departments, which controlled the factories and their production; and (b) Administrative Directorates (Directii Teoretice), also divided into Services, which took care of the administrative work in coordination with the Production Directorates.

50X1

Administratively all Directorates were organized on the same pattern, each with a General Director and a Technical Director, the latter being the most important official in the Directorate. The General Director had to be a CP member, but the Technical Director was not required to be. Because of the shortage of technicians, many specialists were used for their experience until their places could be taken over by Communist-educated experts.

PRODUCTION DIRECTORATES

The General Directorate of Inorganic Chemistry

6. The General Directorate of Inorganic Chemistry was headed by General Director Engineer Teodor SORIN and Technical Director Anton CONSTANTINESCU. The total number of persons working in this

CONFIDENTIAL

CONFIDENTIAL

-3-

Directorate was 30-35 men and women, including about 8-10 engineers (chemical, mechanical and electrical).

7. [redacted] following Services in the General Directorate of Inorganic Chemistry:

50X1

- a. Technical Production Service (Serviciul Tehnico-Productive). Chief of this Service was Engineer GEORGESCU, assisted by a female engineer, Maria STOIANESCU and Engineer Titus SBURLAN. This was one of the most important Services. Its functions consisted of promoting and supervising the production in factories subordinate to it, with a total staff of six to eight persons, mostly engineers specializing in the types of production in these factories.
- b. The Mechanical Service (Serviciul Mecanic - Sef) was concerned with the maintenance of the factory installations. Its staff consisted of three or four persons, headed by a chief engineer.
- c. The Investments Service (Serviciul Investitiilor) was concerned with capital investment, new construction, procurement and purchasing of materials, machines, and other factory installations. Next to the Technical Productive Service it was the most important Service in the Directorate. Its staff consisted of six to eight employees.
- d. The Planning and Evidence Service (Serviciul Plan si Evidenta), with a staff of six to seven, was concerned with planning for capital investment in factories, import and export of materials, machines, and products, as well as sales and circulation of factory products.
- e. The Personnel Service (Serviciul Cadre), staffed by four or five reliable Communists, took care of all personnel matters for this Directorate, such as keeping files of all personal employment and biographical data, and political reliability of the employees. It worked directly with the Director of the Directorate and the Ministry's personnel office.

8. The General Directorate of Inorganic Chemistry controlled the production in the factories subordinated to it, [redacted] the following:

50X1

- a. Metalo-Chemical Works (Combinatul Metalo-Chimic) in Tarnaveni N 46-40, E 24-307. [redacted]

50X1

50X1

50X1

50X1

50X1

50X1

[redacted] The Tarnaveni works occupied an area of about two square kilometers, enclosed by a simple wooden fence and guarded by civilian and uniformed security guards. This factory, which existed before World War II, produced "ohlor", sulphuric acid, nitrogen, and other products [redacted] The factory was one of the largest in Rumania, employing about 5,000 men and women, and operating 24 hours a day in three shifts. In 1953 construction was started on expansion of the factory for the purpose of installing an aluminum section (Sectia de Aluminiu) with a production capacity of 2,200 metric tons of aluminum per year. This section was to be completed by the end of 1954. [redacted] there were two Brown Boveri type 2,500 kw. converters in this part of the factory still unwrapped. These had been imported five or six years before from Switzerland, together with two other converters in operation in the Carbo-Chemical Works in Cluj [see below]. It was planned to transfer these two converters in Cluj to the works in Tarnaveni. These four converters were the only ones in the entire country.

CONFIDENTIAL

CONFIDENTIAL

-4-

- 50X1 b. Solvay Works in Turda N 44-59, E 28-377 (Uzinele Solvay, Turda).
 This was a large old factory producing mainly caustic soda. [redacted]
 50X1 [redacted] It employed about 2,000 to 3,000
 50X1 men and women, operating 24 hours a day in three shifts. The
 50X1 works was guarded by civilian factory guards and enclosed by a
 50X1 low cement fence. This factory wanted to get the converters
 50X1 from the works in Cluj, but the Ministry did not approve such a
 50X1 plan because they were needed for the new aluminum section in
 50X1 Tarnaveni (mentioned above). [redacted]
 50X1 [redacted]
- 50X1 c. Soda Works at Oena Muresului, near Turda (Uzinele Sodice). This
 50X1 factory produced caustic soda. [redacted]
- 50X1 d. Caustic Soda Factory in Valea Galugareasca, near Floesti
 50X1 (Uzinele Valea Galugareasca). This factory produced caustic
 50X1 soda and other materials. [redacted]
 50X1 [redacted]
- 50X1 e. [redacted] a new caustic soda factory constructed since World
 50X1 War II in Medgidia N 44-15, E 28-177.
- 50X1 f. Carbo-Chemical Factory at Cluj (Carbo-Chim). [redacted]
 50X1 [redacted] Chief
 50X1 Engineer was ILENI, who was very capable and not a Party member.
 50X1 The Factory employed 1,000-1,500 men and women in the production
 50X1 of grinding stones (Pietre de Polizor), silicon carbide (Carburo
 50X1 de siliciu), carbon electrodes (Electrozi din carbune), and
 50X1 other things [redacted] The factory worked 24 hours
 a day in three shifts.

The General Directorate of Organic Chemistry

- 50X1 9. The General Directorate of Organic Chemistry, organized on the same
 50X1 pattern as the one described above, controlled and was responsible
 50X1 for the direction of production, capital investment, procurement,
 50X1 sales and distribution of products of the following factories [redacted]
 50X1 [redacted]
- 50X1 a. Gheorghe Doja Factory (Fabrica Gheorghe Doja) in Timisoara.
 50X1 [redacted]
 50X1 [redacted] The factory produced paints and dyes. It employed about
 50X1 500 workers, and I think it operated 24 hours a day in three
 50X1 shifts.
- 50X1 b. Glue Factory in Marasesti N 45-53, E 27-147 (Fabrica Marasesti).
 50X1 This factory produced glue from animal bones. [redacted] several
 50X1 earloads of animal bones [redacted] used in this production [redacted]
 50X1 [redacted] Many accidents in this plant had been
 50X1 called to the attention of the Ministry. The factory employed
 50X1 about 600 to 700 men and women and possibly operated in three
 50X1 shifts 24 hours a day.
- 50X1 c. Factory Polychrom (Fabrica Polychrom) in Arad. This factory
 50X1 employed about 100 workers in the production of drugs, paints,
 50X1 and dyes. [redacted] aspirin, sulfathiazole, and ether were
 50X1 produced there. [redacted]
 50X1 [redacted] the factory did a thriving business and that most of
 50X1 its products were exported to China.

CONFIDENTIAL

CONFIDENTIAL

50X1

-5-

d. **Vesta Factory in Oradea (Fabrica Vesta).** [redacted]

50X1

50X1

50X1

50X1

50X1

50X1

The Factory produced lacquer, paints, dyes, and medicaments. It employed about 200 men and women, and may have operated in three shifts 24 hours a day, [redacted]

50X1

e. **May First Works (Uzinel* Intai Mai) in Bucharest.** [redacted]

[redacted] it produced lacquer, paints and dyes.

The General Directorate of Mine Exploitation**10. The General Directorate of Mine Exploitation controlled all salt mines** [redacted]

50X1

50X1

50X1

50X1

a. **Salt mine in Mures** $\angle N$ 46-33, E 24-337. [redacted]

[redacted] regular workers and forced labor were employed there in the mining of rock salt.

b. **The Slanic Salt Mines** $\angle N$ 45-15, E 25-567, near Prahova $\angle N$ 44-44, E 26-287 (Salinile Slanic) mined rock salt.c. **Salt mine in Targ Ocna** $\angle N$ 46-17, E 26-377 also mined rock salt.**The General Directorate of Processing****11. The General Directorate of Processing (Directia Generala de Prelucratoare) was a secret Directorate which controlled the production of strategic goods under this cover name. All factories under its control were secret projects** [redacted]

50X1

50X1

50X1

50X1

50X1

a. **Chemical Combine No. I (Combinatul Chimic No. 1).** This combine was located in Fagaras $\angle N$ 45-51, E 24-597, but its location was not generally known. It occupied an area about four kilometers square, enclosed by a low wooden fence, and camouflaged among trees. It was guarded by uniformed and civilian security guards. [redacted]

[redacted] This was one of the largest works in Rumania. It employed about 5,000 men and women in the production of gun powder, gases, and gas masks. In the fall of 1953 the director was one IORGA.

50X1

50X1

50X1

b. **Ucea Combine (Combinatul Ucea) at Fagaras.** [redacted] this, too, was a secret project, producing gases and other materials for war. It was controlled also by Sovromchim, which was directed by a Russian with a staff of Russian experts. [redacted]

50X1

50X1

50X1

50X1

c. [redacted] a secret chemical factory in Orastia $\angle N$ 45-49, E 23-127, in which a 1951 explosion was considered sabotage.

d. [redacted] a gas mask factory in Bucharest [redacted]

CONFIDENTIAL

CONFIDENTIAL

-6-

ADMINISTRATIVE DIRECTORATES

12. The following directorates and offices coordinated their administrative work with the various production directorates.
13. The Investments Directorate with a staff of 20 to 30 persons, coordinated production plans, controlled fulfillment of plans, and took care of capital investment in factories.
14. The Planning and Evidence Directorate handled planning for both quantity and quality of production, distribution of products, export of products, necessary imports, and sales. Its staff consisted of 20 to 30 persons.
15. The Technical Directorate had a staff of about 25 persons. The General Director was Dr. Eng. Iulie MOLDOVAN, and the Technical Director was Eng. LANDAU. The functions of the Directorate included the outlining of technical tasks, indicating the methods to be followed in accomplishing these tasks, seeking the best technical methods to be applied in production, elaborating technical norms and standards, promoting innovations, directing research and setting up new research projects. Like the other Directorates, it was subdivided into Services [redacted]
- 50X1 [redacted]
- 50X1 [redacted]
- 50X1 [redacted]
- a. The Inorganic Service (Serviciul Inorganic) collaborated with the General Directorate of Inorganic Chemistry in administration concerning production of factories under that Directorate. It had a staff of three persons: Chief Eng. IONESCU, who took the place in the fall of 1953 of Eng. Radu LECA; Eng. Victor MITROFANOVICI; and Eng. JUVARA, a woman.
- b. The Organic Service (Serviciul Organic) supervised administration concerning the production in factories under the General Directorate of Organic Chemistry. This Service had a staff of four specialists in chemistry. One of these specialists was Chief Eng. CZACU, named to that post in the fall of 1953 in place of Eng. SUESER, who was transferred to a research institute. The others were Eng. Mircea POP, Eng. Mircea LOEBEL, and Eng. MARINESCU, a woman.
- c. The Innovations Service (Serviciul Inovatie) elaborated technical norms and standards, and promoted inventions. It had a staff of four persons: Chief Eng. UNTER, Chemist KRAINDLER, and two clerks without technical qualifications.
- d. The Documentation, Technical Aid and Advice Service (Serviciul Documentatie si Ajutor Tehnic si Consiliul Tehnic) was headed by Eng. Dumitru TODERICIU, who replaced Eng. Victor LANDES. When he was transferred from the Ministry to the Institute of Siderurgic Research (Institutul de Cercetari Siderurgice). The other members of the staff were Eng. Haralambie GREGORIAN, Eng. PASCU, and myself. The functions of this Service consisted of directing production through scientific directives, supervision and direction in application of new technological processes.
- e. The Press Service (Serviciul de Presa), directed by former Journalist Constantin TACHE, was concerned with the editing of the Chemical Review (Revista Chimica), the monthly publication of the Ministry of Chemical Industry.
16. The Secretarial and Administrative Directorate (Directia Secretariat si Administrativ) handled matters for the Ministry, such as payroll, accounting, and personnel. The General Director was

CONFIDENTIAL

PANCEV, a Bulgarian, Secretary of the CP organization in the Ministry. The Deputy Director and chief accountant was one MIERLESCU. This directorate was divided into four Services:

- a. Personnel Service (Serviciul Personal)
- b. Accounting Service (Serviciul Contabilitati)
- c. Finance Service (Serviciul Financial)
- d. Payroll Service (Serviciul Salarii)

17. The Special Directorate (Directia Speciala) took care of all documents and correspondence, keeping secret correspondence and documents in special Fischer safes. It was in close contact with the Security Office. For delivery of classified documents and correspondence it had special couriers, who were members of the Security Service. There were three types of documents:

- (1) Official (Oficial)
- (2) Secret (Secret)
- (3) Very Secret (Foarte Secret)

Only directors and specialist engineers could see secret and very secret documents. The chief of this Directorate was Victor VICTOROVICI. The chief security agent was one ROMAN. Every factory had its own Special Service for the processing of classified documents.

18. The Mechano-Energy Directorate supervised and directed the maintenance and repair of factory installations. It had a staff of 12 persons. The Director used to be one RANCEV. A new Director was appointed in July 1953 [redacted]

50X1

19. The Office for Protection of Labor, with a staff of four, was concerned with the introduction of labor safety devices in factories, such as ventilation, protective clothing (gloves, masks, capes, etc.). The Director was a former worker named CHIVU.

20. The Legal Office (Oficiul Juridic) took care of legal problems, interpretation of ministerial decrees and decisions, and litigation. It had a staff of five or six persons. The director's name was DIMITRIU.

21. The Office for Organization of Work (Oficiul pentru organizarea Muncii) determined the number of persons needed for various jobs, the stabilizing of work norms, and checking on the fulfillment of norms. It had a staff of 10 to 15 persons. The Director's name was LEBNSHON.

22. The Directorate of Cadres and Instruction (Directia Cadre si Invatamant) was concerned with keeping biographies and personal data records for all employees. It also was concerned with the supervision of technical schools and training of young technicians. It had two services:

- a. Instruction Service (Serviciul Invatamant), concerned with schools for workers and training of technicians.
- b. Cadre Service (Serviciul Cadre), which kept personal data on all employees.

CONFIDENTIAL

CONFIDENTIAL

-8-

23. In addition to the above Directorates and offices, one of the most important offices in the Ministry was the Cabinet Control Corps (Corpul de Control al Cabinetului). This office, staffed by 6-10 agents, all reliable Communists, exerted control in all matters such as the carrying out of regulations, fulfilling of norms, finance, sabotage, etc. The members of the staff were seldom seen, and came and went as they pleased. The Director, one CATOIU, had the title of Councilor in the Ministry.

Independent Enterprises Directed by the Ministry of Chemical Industry

24. The following independent enterprises were directed by the Ministry of Chemical Industry through one of the Deputy Ministers [redacted]

- a. ICECHIM, Institute for Chemical Research (Institutul de Cercetari Chimice). This Institute had a laboratory at the Polytechnic Institute in Bucharest. It also had experimental factories in the Dudesti District of Bucharest. [redacted] another laboratory had been constructed in 1953 in the Cotroceni District of Bucharest. The administrative offices of ICECHIM were located on C.A. Rosetti Street in Bucharest.
- b. IPROCHIM, Planning Institute for Chemical Factories (Institutul de Proiectari pentru Fabrici Chimice). This Institute was concerned with the setting up of installations and planning for chemical factories. It was located on Bastiliei Street in Bucharest.
- c. MONCHIM, Enterprise for Installations for Chemical Industry (Interprindere de Montaj pentru Industria Chimica). This enterprise had offices located on Boulevard Nicolae Balcescu (formerly Bratianu Boulevard) in Bucharest.
- d. General Directorate for Procurement and Sales (Directia Generala de Provizionare si Desfacere). This had something to do with export and import [redacted] It was located on Dionisie Lupu Street near the US Legation in Bucharest.
- e. ROMACHIM, Rumanian Chemical Enterprise (Intreprindere Romaneasca de Chimie). This enterprise was set up for chemical research in Buciumeni, near Bucharest. In the fall of 1953 it was still in the planning stages.
- f. SOVROMGAZ, located in Medias, controlled a lamp black (Negru de Fum) factory. [redacted] this factory was working on an important research problem concerning methane gas (Chimizarea gazului metan). [redacted] the general director was a Russian who was aided by a staff of Russian experts. There was a regional representative in Bucharest named RAPAPORT.
- g. CTUM, Technical Collective for New Units (Colectivul Tehnic pentru Unitati Noi), located on C.A. Rosetti Street in Bucharest, was concerned with only the coordination of construction of new units and new factories.

ANNEX:

- A. Organizational Chart [redacted] of the Ministry of Chemical Industry (as of November 1953)

CONFIDENTIAL

CONFIDENTIAL

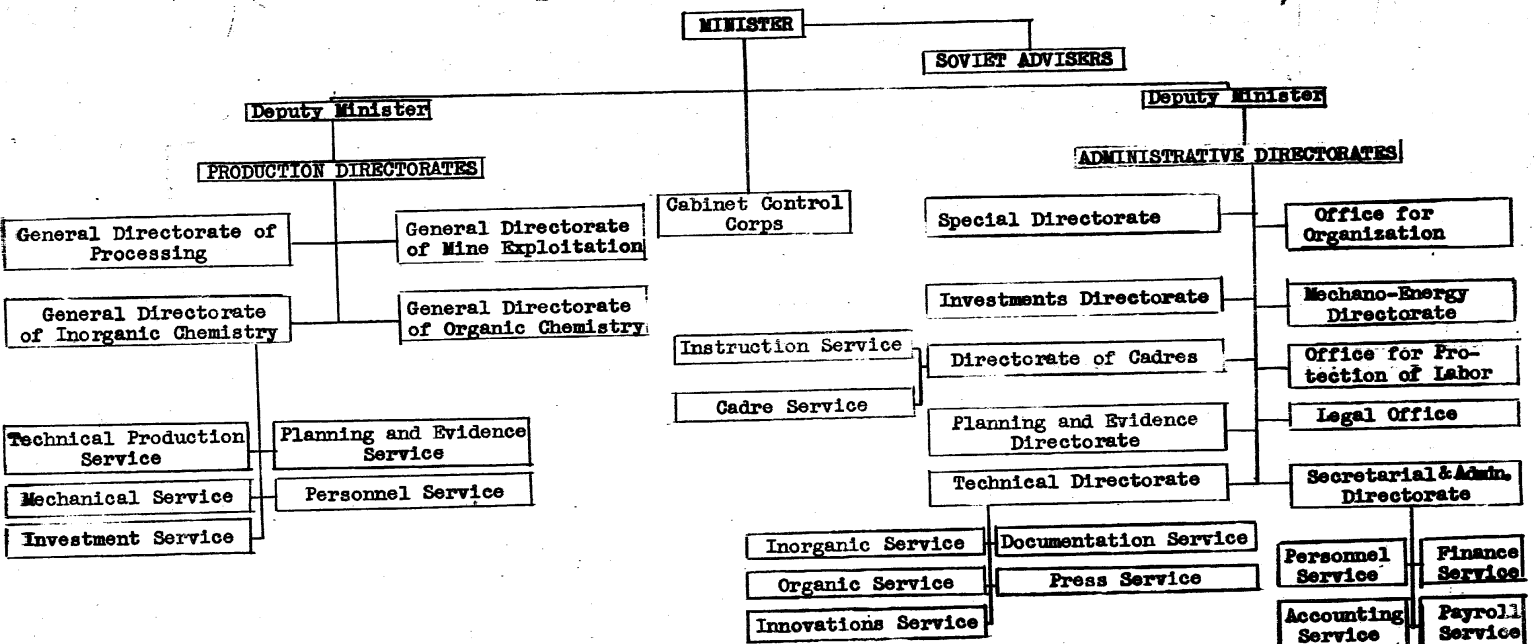
-9-

50X1

ANNEX A:

50X1

Organizational Chart of the Ministry of Chemical Industry (as of November 1953)



CONFIDENTIAL