

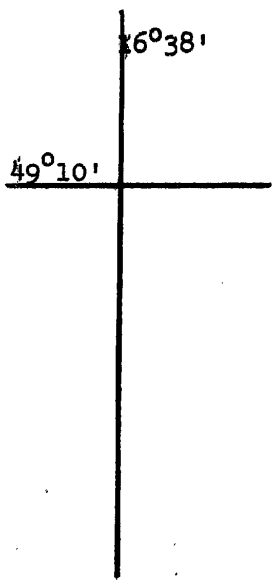
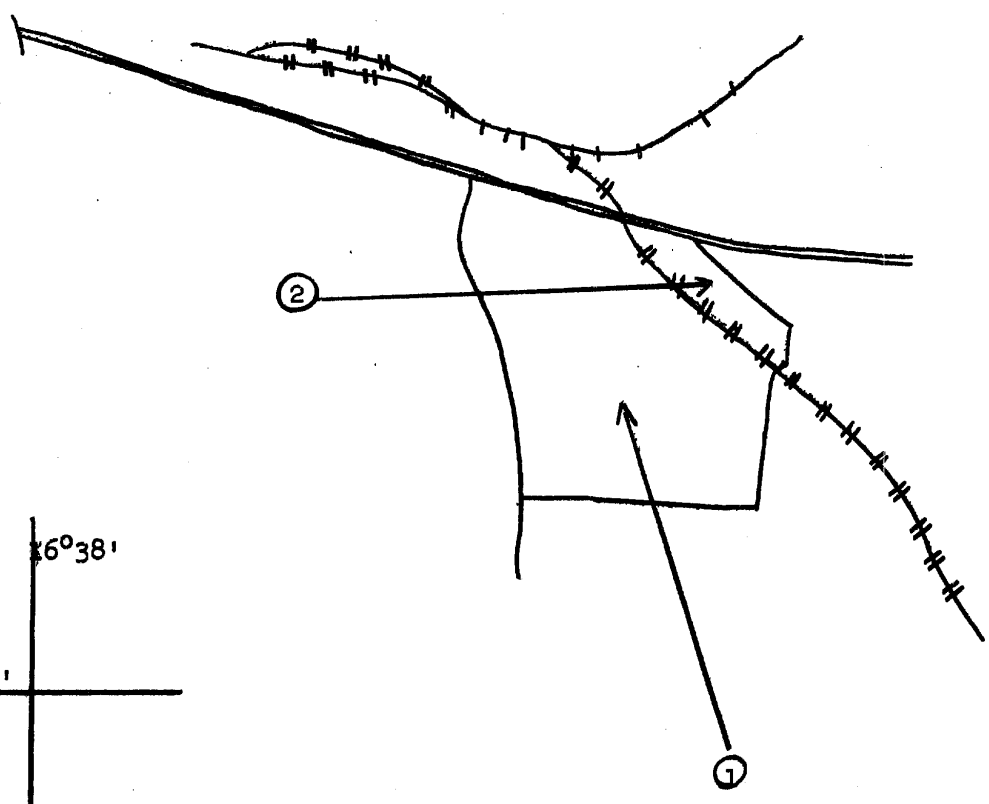
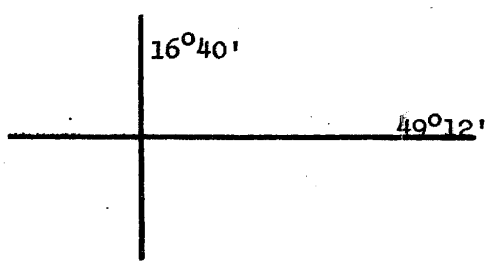
JUN 1

SECRET/SECURITY INFORMATION



ENCLOSURE A:

Pinpoint Location of Brno Airfield and Air Force Military Caserne
Overlay of US Target Complex Mosaic-Series 25, 0232-9954-25M (Tab No.
A310) Scale 1:25,000, Brno



LEGEND

- Point # 1. Brno-Slatina Airfield.
- # 2. Air Force Military Caserne.

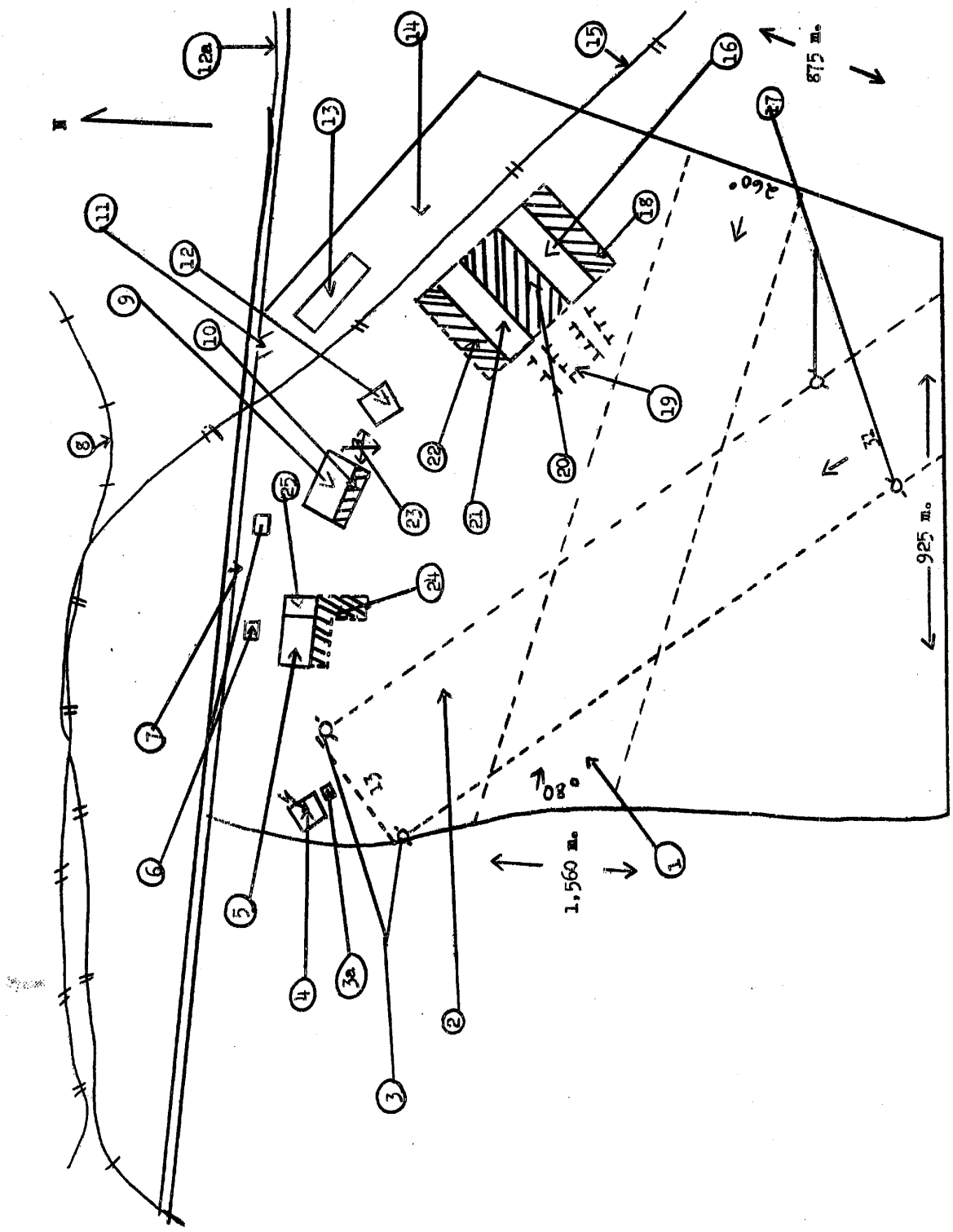
SECRET

SECRET/SECURITY INFORMATION



ENCLOSURE B:

Memory Sketch of Brno Airfield and Caserne



SECRET

SECRET/SECURITY INFORMATION

-2-

ENCLOSURE B: (CONT'D)

LEGEND

- Point # 1. Runway: grass; 26° - 08°; 970 m. x 150 m.; accommodated DC-3's.
- # 2. Runway: grass; 31° - 13°; 1,330 m. x 150 m.; accommodated IL-12's, also presumed able to accommodate jet aircraft in emergency. [redacted] one YAK and one MIG-12 on the airfield. He assumed the MIG-15 to have landed here.
- # 3. Runway Lights: stationary, white lights; approximately 3/4 m. in height. Utilized during bad weather and nights. Portable white lights, about 1/2 m. above ground, were placed along the runway at intervals of 50 - 100 m. at night and during inclement weather.
- # 3a. Lorenz Unit: [redacted] Enclosure C, Memory Sketch of Lorenz Unit, [redacted] gray wooden building; approximately three x three x three meters; flat roof [redacted] construction and color unknown to him; [redacted] antenna mounted on roof; overall height 7 1/2 m.; located approximately 50 m. northwest of runway at Point No. 2. The Lorenz Unit was utilized for aircraft let-down procedure.
- # 4. D/F Building: one-story; gray; stuccoed brick; approximately five x five x three meters; tar papered flat roof; round loop antenna on top of roof utilized for let-down procedure. ME/DF was utilized by civilian and military aircraft [redacted] Enclosure C Memory Sketch of the DF Loop Antenna [redacted].
- # 5. CSA Hangar: dark green; stuccoed brick; approximately 40 x 20 x 15 m.; dark-colored shed roof; corrugated tin; accordion-type folding doors across south entrance of hangar; utilized for overnight housing of a CSA DC-3 during winter months. It also housed 5 - 10 Doslet Club planes (Sokol, Bucker C-106, Aero-45, a Fairchild utilized by CSA for light repairs).
- # 6. Apartments: two-story, dirty, rose, stuccoed brick; approximately 15 x 15 x 15 m.; flat roof (color and construction unknown [redacted]); utilized by Brno CSA employees.
- # 7. Civilian Entrance: iron gates; approximately four meters wide and two meters high, which branched off the Brno-Slavkov [redacted] 4909N-1652E [redacted] highway; used for passengers and CSA employees; gate unguarded.
- # 8. Railroad: Brno-Lisen [redacted] 4912N-1642E [redacted]; single-track; normal gauge; located approximately one kilometer north of airfield.
- # 9. Military Hangar: dark green; stuccoed brick; approximately 40 x 20 x 10 - 12 m.; folding accordion door on southwest side of hangar. In the Winter of 1953, [redacted] one YAK (jet), one MIG-15, one Messerschmitt-262, one IL-10, one IL-2, one Arodo, one Messerschmitt-109, one Bucker C-106, one Bucker C-104, and one Trener C-105, parked in this hangar. It was utilized for teaching cadets of the Military Technical Academy. He observed approximately 30 students working here on aircraft.
- # 10. Apron: cement; approximately 40 x 10 m.

SECRET

SECRET/SECURITY INFORMATION

-3-

ENCLOSURE B: (CONT'D)

- 50X1 # 11. Caserne Military Entrance: branched off the Brno-Slavkov highway; iron gate approximately 4 x 2 m.; guarded by Air Force guard armed with nine millimeter submachine gun of a model unknown [redacted]; perimeter surrounded by steel mesh fence approximately two meters high; area restricted to civilians. Painted dark green.
- # 12. Military Control Tower: two-story; dark green; stuccoed brick; approximately 15 - 20 x 10 x 10 m.; flat glass roof [Enclosure D, Memory Sketch of Military Control Tower]. This type of tower was used most commonly on military airfields.
- 50X1 # 12a. Highway: Brno-Slavkov; two lanes; cement; approximately five to six meters wide. Highway was kept in good condition.
- 50X1 # 13. Building: three-story; stuccoed brick; dimensions and color are unknown [redacted]; utilized by Air Force airfield personnel for sleeping and eating.
- # 14. Caserne [dimensions and description unknown [redacted], but he stated there were more buildings than the one indicated--Point No. 13]. Utilized by Brno Airfield military personnel.
- # 15. Railroad: Brno-Slatina [4911N-1641E]; double-track; normal gauge.
- # 16. Military Hangar: dark green; corrugated tin; approximately 60 x 30 x 8 - 10 m.; dark green corrugated tin, shed-type roof; utilized for housing military aircraft and for major and minor maintenance including changing of motors.
- # 17. Runway Lights: same as Point No. 3.
- # 18. Apron: cement; approximately 60 x 10 m.; for engine run up, fueling, and light maintenance.
- # 19. Parking Area: grass surface for military aircraft which could not be accommodated by the hangars. Military aircraft were always observed at this location. Fueling, light maintenance and checking of aircraft was done in this area.
- # 20. Apron: cement; approximately 60 x 20 m.; light maintenance, aircraft warm-up done here.
- # 21. Military Hangar: same as Point No. 16.
- # 22. Apron: same as Point No. 18.
- 50X1 # 23. Mobile Radar Unit: first observed in Summer of 1952 and observed about twice weekly until March 1953, from approximately 500 m. distance. Always in the same location [Enclosure E, Memory Sketch of Radar Mobile Unit]. Air Force personnel were seen near unit. [redacted] never observed antenna rotating; fixed in north and south position; appeared as though it had a screen. [redacted] overheard from CSA pilots that it was of Russian origin.
- 50X1 # 24. Apron: cement, L-shaped; north side approximately 60 - 70 m.; east side 60 m.; southeast extension 30 - 40 m. wide; west side approximately 15 m. Utilized by CSA for parking, fueling, and light repair of aircraft.

SECRET

SECRET/SECURITY INFORMATION

-4-



ENCLOSURE B: (CONT'D)

50X1

25. CSA Offices: two-story, natural, sand-colored stuccoed brick; approximately 20 x 30 x 10 - 15 m.; top 1½ m. was of glass construction; tar-papered flat roof; top of roof had antennas of a type unknown [redacted]. This building contained the weather station, passenger waiting room, CSA air crew recreation room, a communication room that contained a teletype machine, an HF set (US origin) for A/G and G/A communication and other radio equipment unknown [redacted] and a guard room for the CSA guards (Zavodni Milice).

50X1

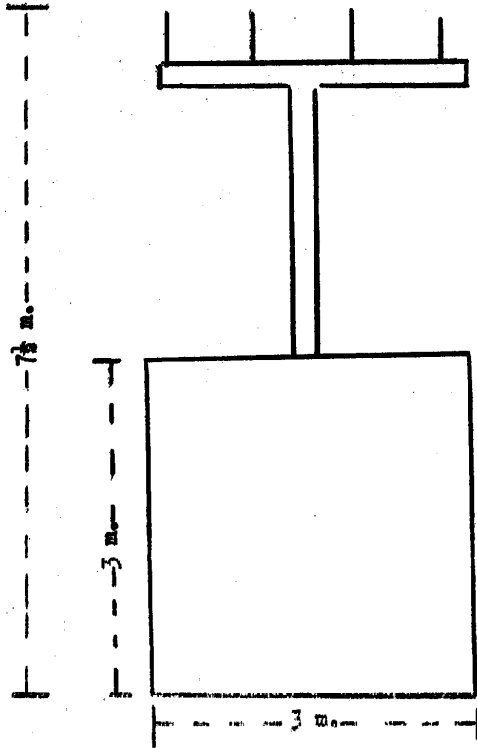
SECRET

SECRET/SECURITY INFORMATION

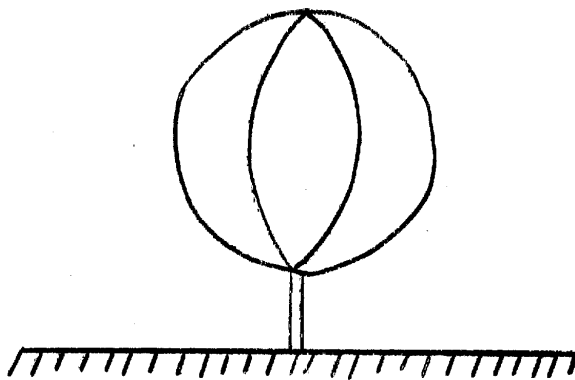


ENCLOSURE C:

Memory Sketch of Lorenz Unit and DF Loop Antenna



LORENZ UNIT



DF LOOP ANTENNA

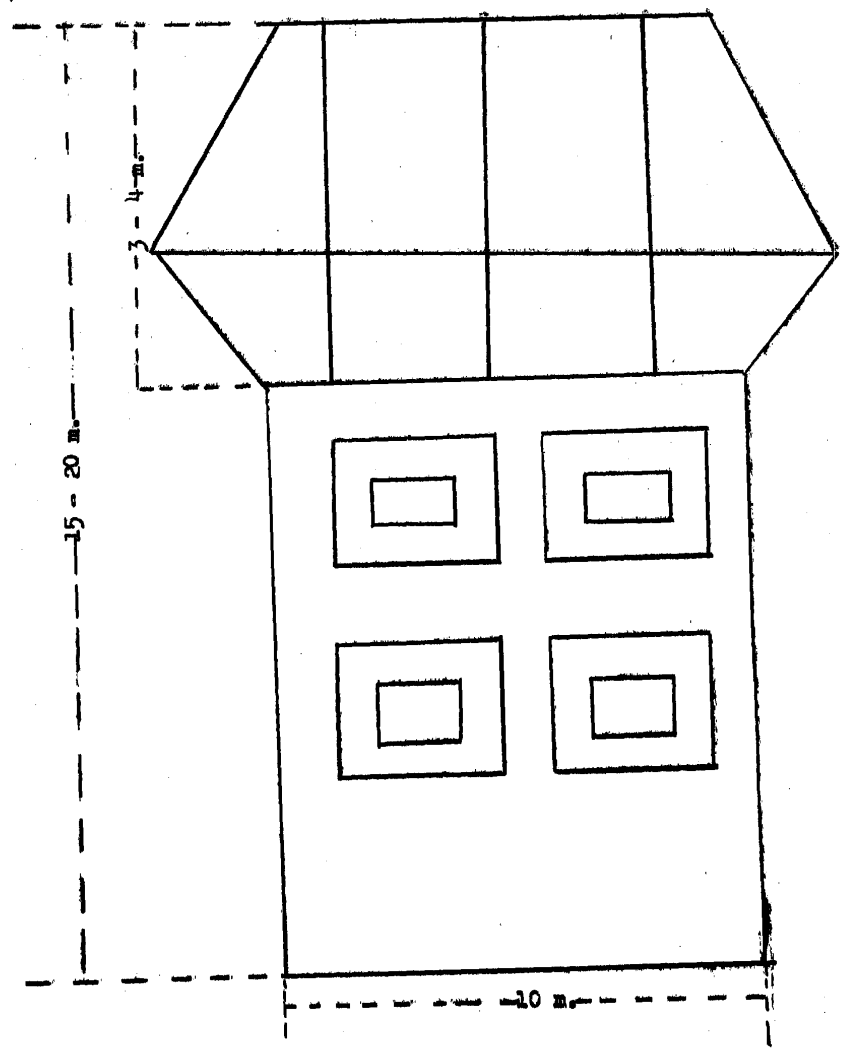
SECRET

SECRET/SECURITY INFORMATION



ENCLOSURE D:

Memory Sketch of Military Control Tower



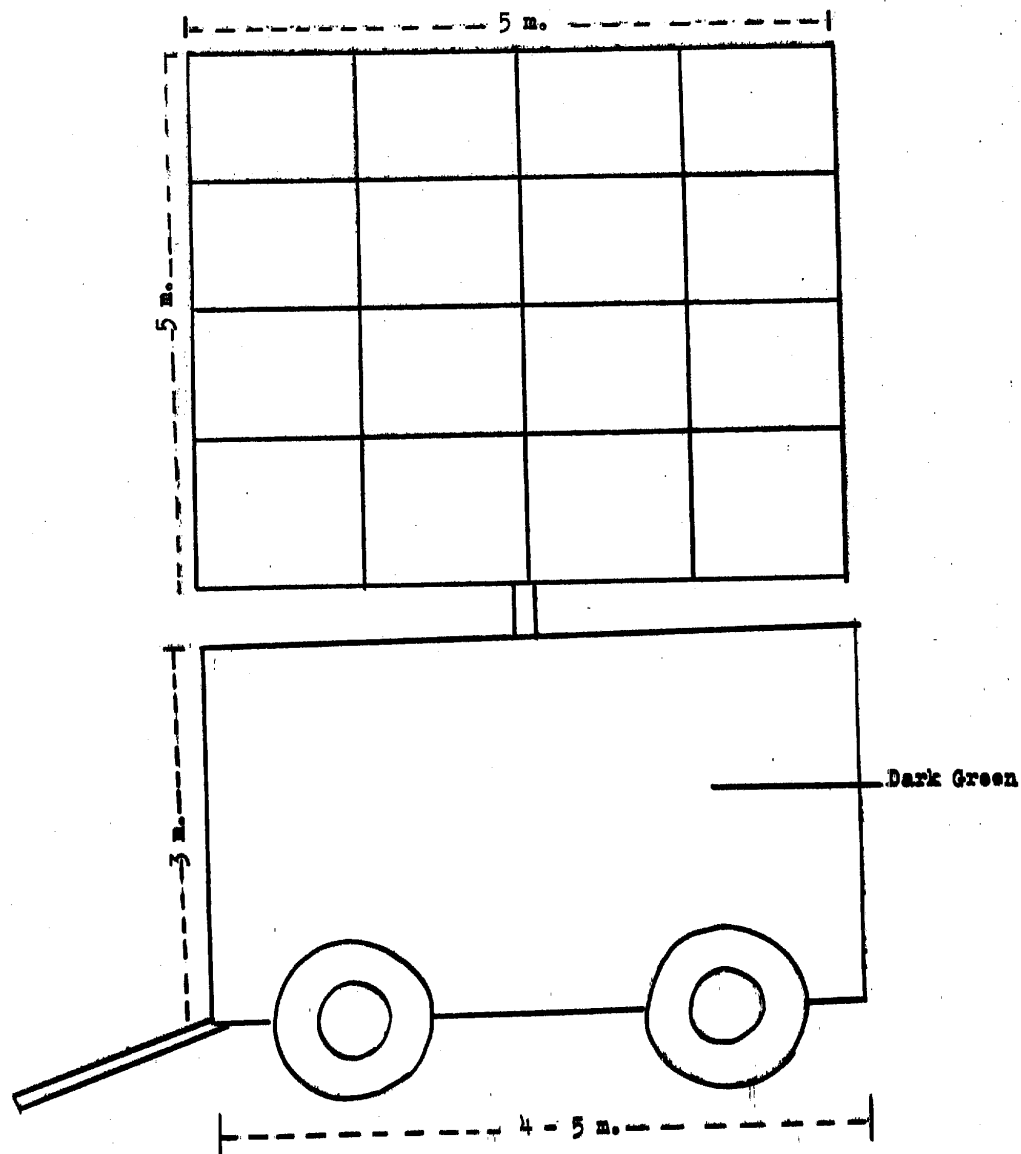
SECRET

SECRET/SECURITY INFORMATION



ENCLOSURE E:

Memory Sketch of Mobile Radar Unit



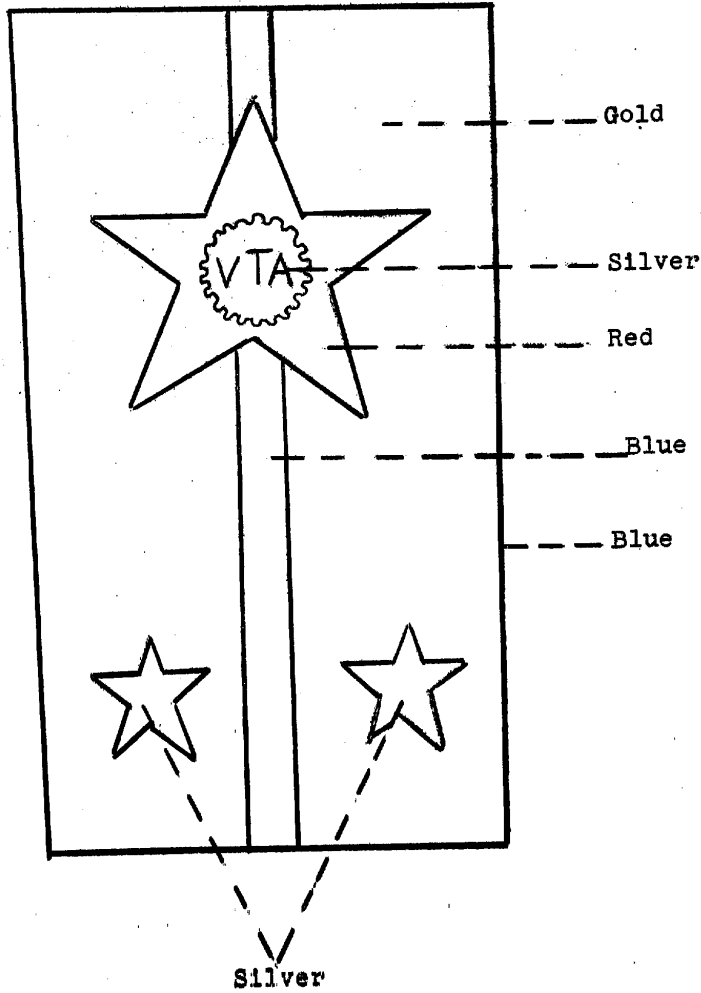
SECRET

SECRET/SECURITY INFORMATION

50X1

ENCLOSURE F:

Memory Sketch of Shoulder Board worn by VTA



SECRET

1-8-125