

50X1-HUM

~~CONFIDENTIAL~~
CLASSIFICATION

(3)

AIR INTELLIGENCE INFORMATION REPORT

COUNTRY OR AREA REPORT CONCERNS

Communist China

SUBJECT (Descriptive title. Use individual reports for separate subjects)

Urban Area Report of Chi-Nan, Shan-Tung Province, Communist China

SUMMARY (Give summary which highlights the salient factors of narrative report. Begin narrative text on AF Form 112a unless report can be fully stated on AF Form 112. List inclosures, including number of copies)

This report contains identification, observation, location, and description pertinent to a urban area report of Chi-Nan, Shan-Tung Province, Communist China.

50X1-HUM

WARNING: This document contains information affecting the national defense of the United States within the meaning of the Espionage Laws, Title 18, U.S.C., Section 793 and 794. The transmission or the revelation of its contents in any manner to an unauthorized person is prohibited by law.

50X1-HUM

AF FORM 112 REPLACES AF FORM 112, 1 OCT 52, WHICH MAY BE USED

~~CONFIDENTIAL~~
CLASSIFICATION

AF FORM 112-PART II
APPROVED 1 JUNE 1948CONFIDENTIAL
(CLASSIFICATION)

50X1-HUM

AIR INTELLIGENCE INFORMATION REPORT

PAGE 2 OF 11 PAGES

Urban Area Report of Chi-Nan, Shan-Tung Province, Communist China

Identification: Chi-Nan City, China

50X1-HUM

Location: 36°41'N/117°00'E

50X1-HUM

Description: (Refer to Incl. 7 of 7)

- Point #1: Hwang-T'ae (phonetic) Tobacco Manufacturing Plant: 1-and-2-story, brick buildings, with gable and hipped roofs.
- Point #2-1: Spinning-mill (Government-operated): 1-and-2-story, brick buildings, with saw-tooth, gable, and hipped roof construction.
- Point #2-2: Residential Area (Spinning-mill personnel): Numerous 1-story, brick buildings, with tile hipped roofs.
- Point #3-1: Ta-Ming-Hu (phonetic) Park
- Point #3-2: Ta-Ming-Hu (phonetic) Lake (artificial)
- Point #4: Shan-Tung Provincial Library
- Point #5: 3rd City Hospital
- Point #6: Flour Mill: "L"-shaped, concrete-coated, 3-story building.
- Point #7: Paper Mill: 1-or-2-story building.
- Point #8: Provincial Prosecutor's Office.
- Point #9: Flour Mill: This area contained at least one 3-story, brick building.

NOTE: THIS DOCUMENT CONTAINS INFORMATION AFFECTING THE NATIONAL DEFENSE OF THE UNITED STATES WITHIN THE MEANING OF THE ESPIONAGE ACT, 50 U.S.C. 31 AND 32, AS AMENDED. ITS TRANSMISSION OR THE REVELATION OF ITS CONTENTS IN ANY MANNER TO AN UNAUTHORIZED PERSON IS PROHIBITED BY LAW. IT MAY NOT BE REPRODUCED IN WHOLE OR IN PART, BY OTHER THAN UNITED STATES AIR FORCE AGENCIES, EXCEPT BY PERMISSION OF THE DIRECTOR OF INTELLIGENCE, USAF.

CONFIDENTIAL
(CLASSIFICATION)

45-600-Army-AG Admin Cen-APPE-50M

CONFIDENTIAL
(CLASSIFICATION)

AIR INTELLIGENCE INFORMATION REPORT

50X1-HUM

PAGE 3 OF 11 PAGES

Point #10: Thermo-electric Power Plant (Refer to Incl. 1 of 7). The area was "L"-shaped, 300 meters long, 150 meters wide, with wing 50 meters wide; length was unknown. North, west, and south sides were bounded by a brick wall, 1 meter high, topped by a barbed wire fence, 70 centimeters high. The following describes points in Inclosure 1 of 7.

- a. Power House: Unknown type construction, 130 meters long, 60 meters wide, with varying height.
- b. Chimney: 4 or 5 chimneys, 70 centimeters in diameter, protruding 2 meters above the roof.
- c. Water Pipes: 2 pipes, each 50 centimeters in diameter, ran underground between the power house and the nearby river.
- d. Conveyor: 2 or 3 bucket-type conveyors, used to transport coal from hopper cars into power house.
- e. Coal Storage Yard.
- f. Rail Tracks: Extending between Points "d" and "e", with hopper cars used to transport coal from storage yard to conveyors.
- g. Transformer Station: Details not remembered.
- h. Building: 2-story, brick construction, 30 meters long, 8 meters wide, with tile hipped roof.
- i. Building: 2-story, brick construction, 20 meters long, 8 meters wide, with tile hipped roof.
- j. Building: 1-story, brick construction, 20 meters long, 6 meters wide, with tile gable roof.
- k. Main Gate
- l. Rear Gate
- m. File of Poles

Point #11: Shan-Tung Provincial Government Office

Point #12: Conference Hall, Provincial Government

Point #13: Provincial Police Staff School

Point #14: Military Police Station: 2 buildings: one, concrete, 2-story, 15 meters long, 8 meters wide, with tile hipped roof; the other, brick, 3-story, "L"-shaped, 30 meters long, 8 meters wide, and with a wing 4 meters long, 8 meters wide, and 12 meters high, with tile hipped roof.

Point #15: Shan-Tung Provincial Department Store

NOTE: THIS DOCUMENT CONTAINS INFORMATION AFFECTING THE NATIONAL DEFENSE OF THE UNITED STATES WITHIN THE MEANING OF THE ESPIONAGE ACT, 50 U. S. C. 31 AND 32, AS AMENDED. ITS TRANSMISSION OR THE REVELATION OF ITS CONTENTS IN ANY MANNER TO AN UNAUTHORIZED PERSON IS PROHIBITED BY LAW. IT MAY NOT BE REPRODUCED IN WHOLE OR IN PART, BY OTHER THAN UNITED STATES AIR FORCE AGENCIES, EXCEPT BY PERMISSION OF THE DIRECTOR, INTELLIGENCE, USAF.

CONFIDENTIAL
(CLASSIFICATION)

AF FORM 112—PART II
APPROVED 1 JUNE 1948

~~CONFIDENTIAL~~
(CLASSIFICATION)

50X1-HUM

AIR INTELLIGENCE INFORMATION REPORT

PAGE 4 OF 11 PAGES

- Point #16: Children's Hospital 50X1-HUM
- Point #17: Diesel Engine Manufacturing Plant: An area 200 meters long, 80 meters wide, surrounded by a stone wall, 3 meters high. [redacted] many (number unknown) 1-and-2-story buildings of various dimensions; some were of brick construction and others, an unknown type. Largest was a 1-story, "monitor-roofed" building, 50 meters long, 20 meters wide, 8 meters high, construction material unknown. [redacted] 2 furnaces. [redacted] this plant manufactured diesel engines of 5HP to 200HP (1 to 4 cylinders). 50X1-HUM
- Point #18: Official Residential Area 50X1-HUM
- Point #19: Artillery Emplacement: 3 guns, each covered with canvas, located in an old castle. [redacted] each gun emplaced in a rock revetment, each spaced at 2- or 3-meter intervals. [redacted] a permanent artillery site. 50X1-HUM
- Point #20: Chien-Fo-Ssu (phonetic) Temple 50X1-HUM
- Point #21: Prison (long-term)
- Point #22: 2nd City Hospital
- Point #23: Artesian Well (City Water Pumping Station): 3 two-story, brick buildings, with tile hipped roofs. There were 2 wells, one estimated to be 8 meters square and the other, 6 meters square; depth unknown.
- Point #24: 2nd Provincial Hospital
- Point #25: Shan-Tung Medical College
- Point #26: Government Residential Area (under construction)
- Point #27: Shan-Tung Provincial Museum
- Point #28: Railroad Hospital
- Point #29: Match Factory: 1-story, brick buildings, with tile gabled and hipped roofs.
- Point #30: District Court and Detention Hall
- Point #31: People's Market
- Point #32: Middle School
- Point #33: Provincial Headquarters, Communist Party Committee
- Point #34: Residential Area of the City Post Office
- Point #35-1: Military Barracks: numerous 2-story brick buildings.

NOTE: THIS DOCUMENT CONTAINS INFORMATION AFFECTING THE NATIONAL DEFENSE OF THE UNITED STATES WITHIN THE MEANING OF THE ESPIONAGE ACT, U.S.C. 31 AND 32, AS AMENDED. ITS TRANSMISSION OR THE REVELATION OF ITS CONTENTS IN ANY MANNER TO AN UNAUTHORIZED PERSON IS PROHIBITED BY LAW. IT MAY NOT BE REPRODUCED IN WHOLE OR IN PART, BY OTHER THAN UNITED STATES AIR FORCE AGENCIES, EXCEPT BY PERMISSION OF THE DIRECTOR, AIR INTELLIGENCE USAF.

~~CONFIDENTIAL~~
(CLASSIFICATION)

45-990-Army-AG Admin Cén-AFFE-50M

~~CONFIDENTIAL~~
(CLASSIFICATION)

AIR INTELLIGENCE INFORMATION REPORT

50X1-HUM

PAGE 5 OF 11 PAGES

Point #35-2: Military Barracks: same as Point #35-1.

Point #36: Artillery Emplacement: located in old temple (watch tower) in Ssurin Shan Park; constructed of stone; and used as a temporary site for public display purposes on special occasions, such as Liberation Day; size and type of weapons unknown.

Point #37-1: Army Security Unit Barracks: 4 one-story, wooden buildings with hipped roofs; personnel strength unknown.

Point #37-2-3: Army Security Unit Barracks: each point contained one 1-story, brick building, with gable roof; personnel strength unknown.

Point #38-1: (Refer to Incl. 2 of 7) Army Signal Unit: 3 one-story, brick buildings, each approximately 20 meters long and 7 meters wide; Source observed an antenna array located in this area. In the sketch are several times marked "A", "B" and "C"; Source stated each of these was in greater number than shown in his sketch.

Point #38-2: (Refer to Incl. 3 of 7) Army Signal Unit: newly constructed area, 100 meters long, 70 meters wide, bounded on the south and west by a brick wall. Personnel stationed here were formerly from the area described in Point #38-1 (unknown whether entire unit was transferred here). The following describes points in the area.

- A. Two-story, brick building, 60 meters long, 8 meters wide, with tile hipped roof.
- B. Three-story, brick building, 10 meters long, 10 meters wide, with 2 wings (each 2-story) 20 meters long, 8 meters wide, with tile hipped roofs.
- C. One-story, brick building, 40 meters long, 8 meters wide, with tile gable roof.
- D. Same as building "A" (above).
- E. (Refer to Incl. 4 of 7) An antenna array consisting of wires strung in a crisscross pattern, approximately 8 meters above ground, between 4 masts (height and interval between masts unknown). On top of each mast was a metal wheel with wire spokes, standing in an upright position. No lead-in wires were observed extending to any of the buildings. Points "A" are in greater number than shown in the sketch.

Point #39: Provincial Headquarters, Democratic Youth League

Point #40: Military Recreation Area: open area 200 meters long, 100 meters wide, containing various gym equipment.

THIS DOCUMENT CONTAINS INFORMATION AFFECTING THE NATIONAL DEFENSE OF THE UNITED STATES WITHIN THE MEANING OF THE
SPY AND SEDITIOUS LAWS, AS AMENDED. ITS TRANSMISSION OR THE REVELATION OF ITS CONTENTS IN ANY MANNER TO AN UNAUTHORIZED PERSON
IT MAY NOT BE REPRODUCED IN WHOLE OR IN PART, BY OTHER THAN UNITED STATES AIR FORCE AGENCIES, EXCEPT BY PERMISSIBLE
INTELLIGENCE, USAF.

~~CONFIDENTIAL~~
(CLASSIFICATION)

45-800-A1

AF FORM 112—PART II
APPROVED 1 JUNE 1948

CONFIDENTIAL
(CLASSIFICATION)

AIR INTELLIGENCE INFORMATION REPORT

50X1-HUM

PAGE 6 OF 11 PAGES

- Point #41: *Pai-Tai-T'ang* (phonetic): [redacted] this was a Military Conference Hall. It consisted of 1 building (believed to be of concrete construction), 70 meters long, 40 meters wide, and 20 meters high, with a recessed, hipped roof. Source estimated seating capacity of this hall at 2,000. 50X1-HUM
- Point #42: Dependents' Quarters for Communist Party Staff Personnel and Field Grade Army Officers: This area was surrounded by a stone wall 2 meters high, and contained many (number unknown) 1-and-2-story buildings of various sizes and construction, including brick. All of the buildings had tile roofs. Some of the buildings were newly constructed in the summer of 1956, while others were built during Japanese occupation.
- Point #43: (Refer to Incl. 5 of 7) An area approximately 1,000 meters long, 800 meters wide, bounded on south, west and east sides by a brick wall topped with barbed wire fence. [redacted] this area was designated as Chi-Nan Military Region Headquarters. [redacted] many (number unknown) 2-or-3-story brick buildings (dimensions unknown) within the area. Similar buildings were under construction in the northern quarter and southeast corner of the area. 50X1-HUM
- Point #44: Gasoline Distribution Station; Consisted of 1 gasoline pump and a small shack. One person operated this station (hours of operation unknown); it serviced only military vehicles.
- Point #45: Residential Area (railroad employees)
- Point #46: Chi-Nan Juvenile Prison
- Point #47: Barracks for CGAF Personnel
- Point #48-1: Number 1 Brick Factory, Chi-Nan Prison: 1-story, stone and brick buildings, with gable and hipped roofs. A brick smoke stack, 25 meters high and 3 meters in diameter, was located on the south side of the area. Approximately 145 ex-prisoners, including Source, "who had completed their sentence," but were forced to work for the prison, labored at the factory and produced 50,000 bricks and 10,000 tiles daily. Some sections of the factory operated on a 3 eight-hour shift basis, while other sections operated 1 eight-hour shift. Raw material was obtained from a nearby quarry.
- Point #48-2,3: Brick Factories, Chi-Nan Prison; description similar to Point #48-1.
- Point #49-1,2,3,4: Chi-Nan City Brick Factories: description similar to Point #48-1.
- Point #50: Chi-Nan Prison
- Point #51: Chi-Nan Cement Plant; Source described this plant as having 1 very large building of many different stories (type construction unknown). Also in the area were numerous, 1-story, brick buildings with tile gable, hipped and "monitor roofs."

NOTE: THIS DOCUMENT CONTAINS INFORMATION AFFECTING THE NATIONAL DEFENSE OF THE UNITED STATES WITHIN THE MEANING OF THE ESPIONAGE ACT, 50 U. S. C. 31 AND 32, AS AMENDED. ITS TRANSMISSION OR THE REVELATION OF ITS CONTENTS IN ANY MANNER TO AN UNAUTHORIZED PERSON IS PROHIBITED BY LAW. IT MAY NOT BE REPRODUCED IN WHOLE OR IN PART, BY OTHER THAN UNITED STATES AIR FORCE AGENCIES, EXCEPT BY PERMISSION OF THE DIRECTOR OF INTELLIGENCE, USAF.

CONFIDENTIAL
(CLASSIFICATION)

45-980-Army-AG Admin Cer-AFFE-50M

AF FORM 112—PART II
APPROVED 1 JUNE 1948**CONFIDENTIAL**
(CLASSIFICATION)**AIR INTELLIGENCE INFORMATION REPORT**

50X1-HUM

PAGE 7 OF 11 PAGES

Point #52: Chi-Nan City First Aid Station

Point #53: Middle School

Point #54-1: 1st Machine Manufacturing Plant: An area 200 meters long, 150 meters wide. The plant was composed of 11 buildings; 5 were constructed of galvanized iron, 1-story, with galvanized iron roofs (monitor-type); remaining were 1-and-2-story, brick construction, with tile gable and monitor roofs. These buildings included; casting shop, 30 meters long, 20 meters wide, 6 meters high (Source observed many lathes in these buildings); finishing (grinding) shop, 30 meters long, 6 meters wide, and 7 meters high; shipping department, 40 meters long, 20 meters wide, 6 meters high; 2 office buildings, 30 meters long, 6 meters wide, and 7 meters high; and an unidentified building, 15 meters long, 5 meters wide, and 4 meters high. [redacted] the area also contained a foundry [redacted]

[redacted] An armed guard was posted at the plant's main entrance. [redacted] number of employees

[redacted] approximately 2,000. [redacted]

[redacted] every year many North Koreans were trained at this factory. The training period was 1 year. [redacted] the plant produced

machinery; [redacted]

[redacted] small arms and artillery shells.

Point #54-2: 1st Machine Manufacturing Plant Residential Area: Many 1-and-2-story, brick buildings, with gable and monitor tile roofs.

Point #55: TB Hospital

Point #56: Chi-Nan Jih-Pao (Daily) Building

Point #57: Army Band School: Two 2-story, brick buildings

Point #58: People's Bank

Point #59: Chi-Nan Prosecutor's Office

Point #60: Parcel Post Office

Point #61: City Police Bureau

Point #62: Chinese-Soviet Society

Point #63: City People's Committee

Point #64: Tah-Chung (People's) Jih-Pao (Daily) Building

Point #65: People's Bank

Point #66: City Cultural Bureau

Point #67: Provincial Police Headquarters

THIS DOCUMENT CONTAINS INFORMATION AFFECTING THE NATIONAL DEFENSE OF THE UNITED STATES WITHIN THE MEANING OF THE ESPIONAGE
 31 AND 32 AS AMENDED. ITS TRANSMISSION OR THE REVELATION OF ITS CONTENTS IN ANY MANNER TO AN UNAUTHORIZED PERSON IS PROHIBITED
 IT MAY NOT BE REPRODUCED IN WHOLE OR IN PART, BY OTHER THAN UNITED STATES AIR FORCE AGENCIES, EXCEPT BY PERMISSION OF THE
 INTELLIGENCE, USAF.

CONFIDENTIAL
(CLASSIFICATION)

45-880-Army-AG Ad

AF FORM 112—PART II
APPROVED 1 JUNE 1948

~~CONFIDENTIAL~~
(CLASSIFICATION)

AIR INTELLIGENCE INFORMATION REPORT

50X1-HUM

PAGE 8 OF 11 PAGES

- Point #68: Agricultural Department, Shan-Tung Provincial Government
- Point #69: Shan-Tung Hotel
- Point #70: Chi-Nan Railroad Police Headquarters
- Point #71: Chi-Nan Railroad Station Area: 2 buildings, size and construction unknown.
- Point #72: Vehicle Repair Shop: This was commonly called "Tien-Chio (phonetic) Automobile Shop" by local residents. The area was 170 meters long, 30 meters wide, surrounded on north, west, and south sides by a brick and stone wall, 2 meters high. The repair shop was composed of 10 one-story, brick buildings with tile gable roofs, and included: 2 maintenance and repair shops: one, 50 meters long, 7 meters wide, and 6 meters high; the other, 45 meters long, 15 meters wide, 6 meters high. Many trucks (type unknown) were observed parked in the open. Source heard from a long-time resident of Chi-Nan that this was the largest vehicle repair shop in the city.
- Point #73: Ice Plant: 1-and-2-story, brick buildings with gable tile roofs.
- Point #74: Flour Mill
- Point #75: Theater
- Point #76: Automotive Parts Manufacturing Plant
- Point #77: Army (Infantry) NCO School: An area 300 meters long, 200 meters wide, enclosed by a brick wall, 2 meters high. It included one 3-story, brick building, 150 meters long, 12 meters wide, with hipped, tile roof and 3 or 4 other 2-story, brick buildings, roof type, dimensions, and personnel strength unknown.
- Point #78: Dye Factory
- Point #79: Housing Area for Laborers
- Point #80: Broadcasting Station
- Point #81: 1st City Hospital
- Point #82: City Transportation Office
- Point #83: City Hall
- Point #84: Main Post Office
- Point #85: Flour Mill
- Point #86-1: 1st Provincial Hospital
- Point #86-2: 1st Provincial Hospital Residential Area

NOTE: THIS DOCUMENT CONTAINS INFORMATION AFFECTING THE NATIONAL DEFENSE OF THE UNITED STATES WITHIN THE MEANING OF THE ESPIONAGE ACT AND IS CLASSIFIED AS A MANDATORY CONTROL. ITS TRANSMISSION OR THE REVELATION OF ITS CONTENTS IN ANY MANNER TO AN UNAUTHORIZED PERSON IS PROHIBITED. IT MAY NOT BE REPRODUCED IN WHOLE OR IN PART, BY OTHER THAN UNITED STATES AIR FORCE AGENCIES, EXCEPT BY PERMISSION OF THE DIRECTOR, AIR FORCE INTELLIGENCE, USAF.

~~CONFIDENTIAL~~
(CLASSIFICATION)

44-900-Army-AQ Admin C

AF FORM 112—PART II
APPROVED 1 JUNE 1948

~~CONFIDENTIAL~~
(CLASSIFICATION)

(39)

AIR INTELLIGENCE INFORMATION REPORT

50X1-HUM

PAGE 9 OF 11 PAGES

- Point #87: Unidentified Government Staff School
- Point #88: Unidentified Military Installation
- Point #89: Iron Works: An area 200 meters long, 150 meters wide, surrounded by a brick wall 2 meters high. The iron works was composed of 9 one-story brick buildings with gable tile roofs, and included: 1 factory building, 70 meters long, 25 meters wide, 6 meters high; 4 factory buildings, each 30 meters long, 5 meters wide, 5 meters high; and an office building. Source observed cases of nuts and bolts being loaded into trucks at the warehouses. In one of the buildings, he saw workmen constructing metal tanks 1.5 meters high and 4 to 5 meters in diameter.
- Point #90: Oil Factory (edible)
- Point #91: Bone Factory
- Point #92: Technical School
- Point #93: Small Arms Firing Range
- Point #94: Ammunition Dump: (Refer to Incl 6 of 7) at least 10 half-moon-shaped caves, each 6 meters long, 6 meters wide, depth unknown, spaced at 20-meter intervals, dug into the east side of a hill 80 meters high. A dirt road extended north to south along the east side of the hill. The area was restricted and [redacted] a barbed wire fence around the east side of the area; [redacted] the fence surrounded the entire area. [redacted] this site was an ammunition dump, and that another road ran parallel to the eastern road on the western side of the hill. [redacted]
- Point #95: Military Barracks: numerous 2-story, brick buildings, each with hipped tile roofs, arranged in 2 rows.
- Point #96: Food Warehouse
- Point #97: 2nd Machine Manufacturing Plant: [redacted] A stream 3 meters wide divided the plant into 2 areas. Area on the north side of the stream was 200 meters square and surrounded by a brick wall 2 meters high; area on the south side was 170 meters wide (Source was never in this area, thus, was unable to give length), and was surrounded by a concrete-surfaced wall 2 meters high. The plant consisted of 6 one-story buildings with brick walls and "M"-type, galvanized iron roofs; one of these buildings had many "I"-shaped, metal pillars, which ran the length of the building interior and supported 2 overhead type cranes.
- There were also 1 three-story, 8 two-story, and many one-story brick buildings, with hipped tile roofs, at this location. [redacted] many unfinished lathe casts piled in front of the buildings, and several groups of finished lathe [redacted]

50X1-HUM

50X1-HUM

50X1-HUM

NOTE: THIS DOCUMENT CONTAINS INFORMATION AFFECTING THE NATIONAL DEFENSE OF THE UNITED STATES WITHIN THE MEANING OF THE ESPIONAGE ACTS 51 AND 52, AS AMENDED. ITS TRANSMISSION OR THE REVELATION OF ITS CONTENTS IN ANY MANNER TO AN UNAUTHORIZED PERSON IS PROHIBITED. IT MAY NOT BE REPRODUCED IN WHOLE OR IN PART, BY OTHER THAN UNITED STATES AIR FORCE AGENCIES, EXCEPT BY PERMISSION OF THE DIRECTOR, AIR FORCE INTELLIGENCE, USAF.

~~CONFIDENTIAL~~
(CLASSIFICATION)

45-490-Army-AG Adm

AF FORM 112—PART II
APPROVED 1 JUNE 1948~~CONFIDENTIAL~~
(CLASSIFICATION)

AIR INTELLIGENCE INFORMATION REPORT

50X1-HUM

PAGE 10 OF 11 PAGES

parts stacked beside another building. Source could not estimate number of personnel employed at this plant.

Point #98: Residential Area (unidentified organization)

Point #99: Army Barracks

Point #100: RR Passenger Car Manufacturing Plant: The area was approximately 300 meters long, and 150 meters wide. The plant was composed of 6 long, one-story buildings, with barrel-shell and monitor-type roofs (construction material unknown, but color was similar to concrete), and many other brick buildings with tile roofs. Three to 4 rows of passenger cars (approximately 6 to 7 cars per row) were located on the north side of the area, parallel to RR tracks between Shanghai and Tienchin.

50X1-HUM

Point #101: Military Barracks Area (under construction). [redacted]

[redacted] upon completion, would quarter military personnel (unit designation and strength unknown). Building materials included lumber, brick and stone, which were stacked in the area. [redacted]

50X1-HUM

Point #102-1: Soy-bean Sauce Plant

Point #102-2: Vegetable Market

Point #103: Provincial Warehouse for Daily Necessities

Point #104: Coal Storage Yard

Point #105: Lumber Mill

Point #106: Chi-Nan Airfield: In May 1955, inhabitants of a village situated 1.5 kilometers northwest of the airfield and along a dirt road leading toward the Yellow River, were given relocation orders by Chinese Communist authorities. This move was to facilitate expansion work of Chi-Nan Airfield. The village, name unknown, consisted of 70 or 80 houses, whose occupants were engaged mainly in farming. The government announced that assistance would be given to those evicted.

50X1-HUM

In [redacted] 1957, [redacted] only 10 of the original 70 to 80 houses remained. At this date construction work at the airfield was under way. [redacted] the area east of the runway was being leveled by 4 bulldozers, and trucks were being used to haul sand from the Yellow River to the expansion site. Foundations for an unknown number of buildings were also being constructed.

50X1-HUM

NOTE: THIS DOCUMENT CONTAINS INFORMATION AFFECTING THE NATIONAL DEFENSE OF THE UNITED STATES WITHIN THE MEANING OF THE ESPIONAGE ACT, 50 U.S.C. 31 AND 32, AS AMENDED. ITS TRANSMISSION OR THE REVELATION OF ITS CONTENTS IN ANY MANNER TO AN UNAUTHORIZED PERSON IS PROHIBITED BY LAW. IT MAY NOT BE REPRODUCED IN WHOLE OR IN PART, BY OTHER THAN UNITED STATES AIR FORCE AGENCIES, EXCEPT BY PERMISSION OF THE DIRECTOR OF INTELLIGENCE, USAF.

~~CONFIDENTIAL~~
(CLASSIFICATION)

45-680-Array-AQ Admin Con-AFFE-50M

AF FORM 112—PART II
APPROVED 1 JUNE 1948

CONFIDENTIAL
(CLASSIFICATION)

(91)

AIR INTELLIGENCE INFORMATION REPORT

50X1-HUM

	PAGE 11 OF 11 PAGES
--	---------------------

	50X1-HUM
--	----------

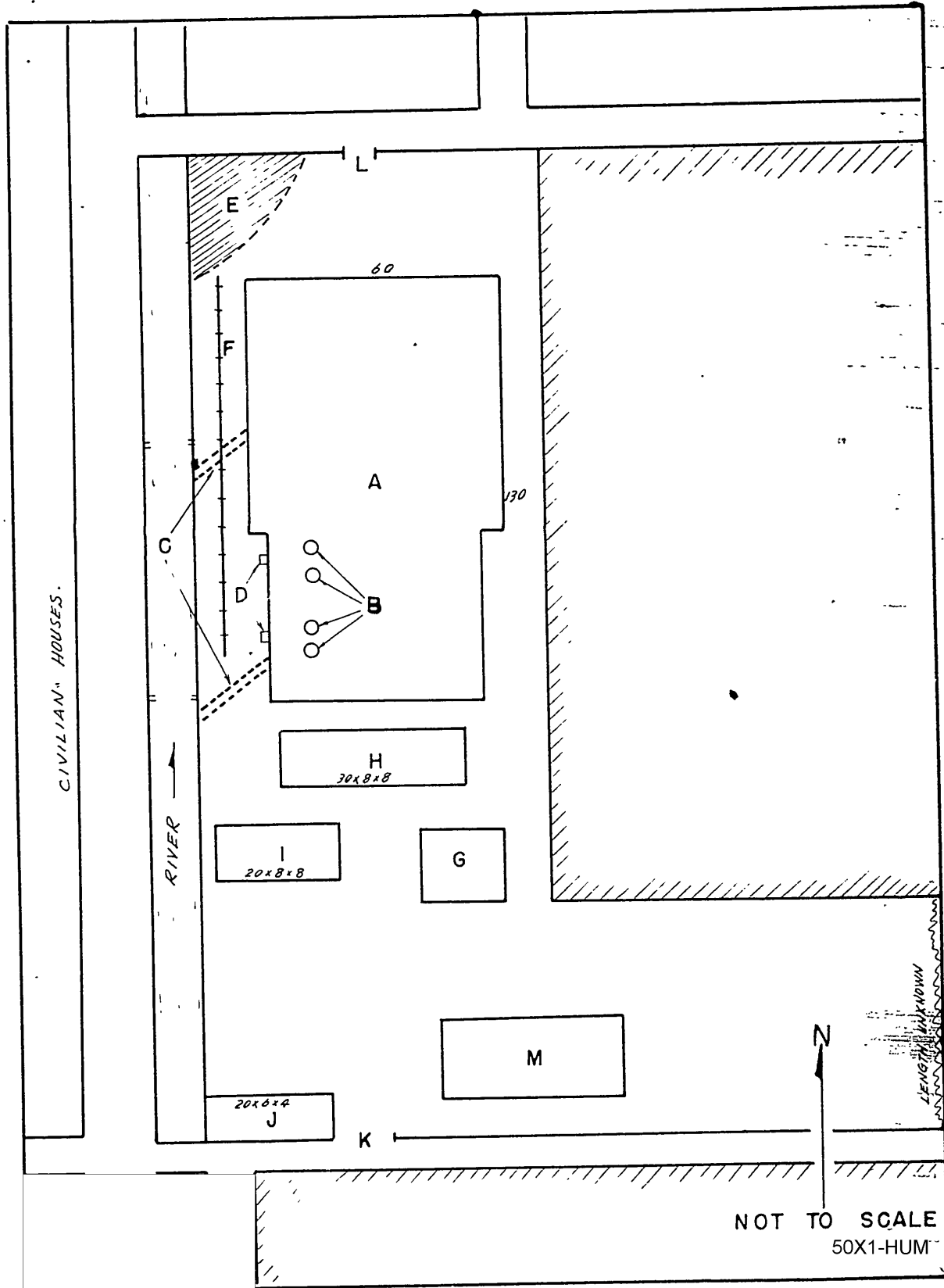
Point #107-1,2,3,4,5,6,7: Transformer Stations: Each station was identical, and was 7 meters square and 8 meters high, with tile roof. 50X1-HUM

NOTE: THIS DOCUMENT CONTAINS INFORMATION AFFECTING THE NATIONAL DEFENSE OF THE UNITED STATES WITHIN THE MEANING OF THE ESPIONAGE ACT, 50 U. S. C.—31 AND 32, AS AMENDED. ITS TRANSMISSION OR THE REVELATION OF ITS CONTENTS IN ANY MANNER TO AN UNAUTHORIZED PERSON IS PROHIBITED BY LAW. IT MAY NOT BE REPRODUCED IN WHOLE OR IN PART, BY OTHER THAN UNITED STATES AIR FORCE AGENCIES, EXCEPT BY PERMISSION OF THE DIRECTOR OF INTELLIGENCE, USAF.

CONFIDENTIAL
(CLASSIFICATION)

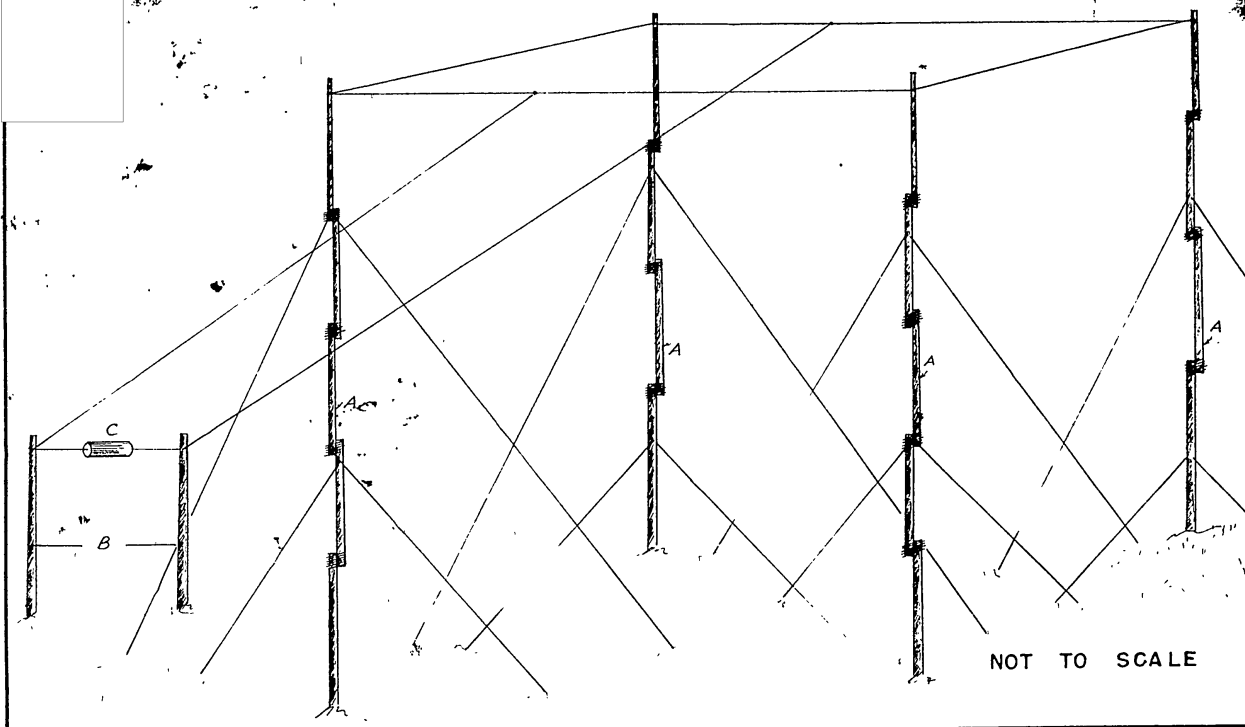
45-000 Army AG Admin Cen-AFFE-50M

42



SIGNAL UNIT ANTENNA

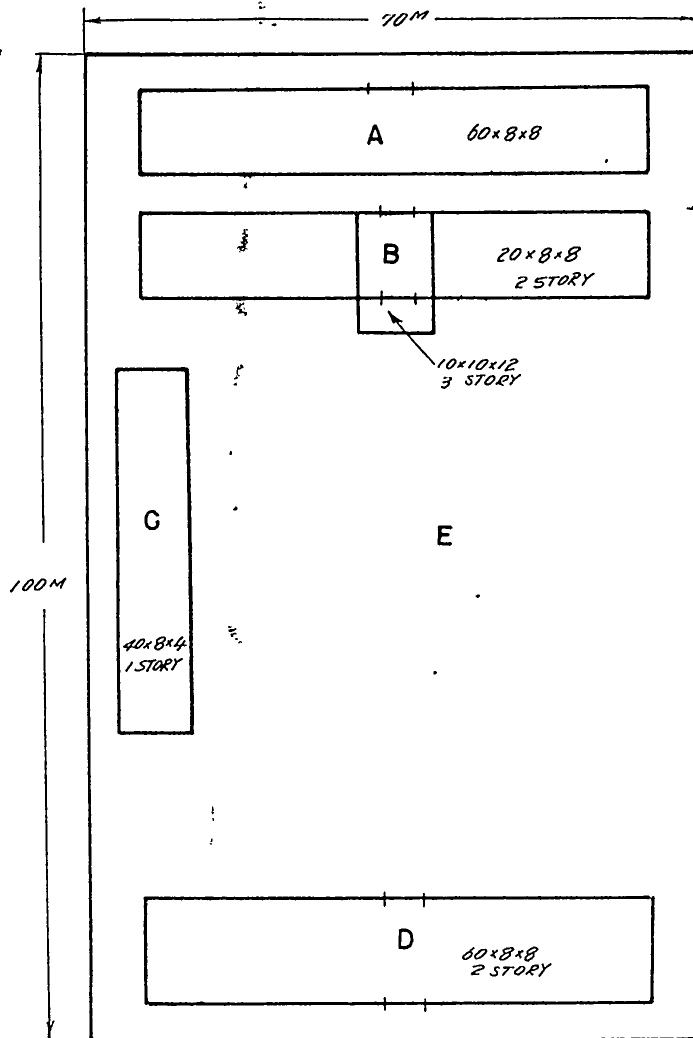
50X1-HUM



44

CONFIDENTIAL

LAYOUT OF ARMY SIGNAL UNIT



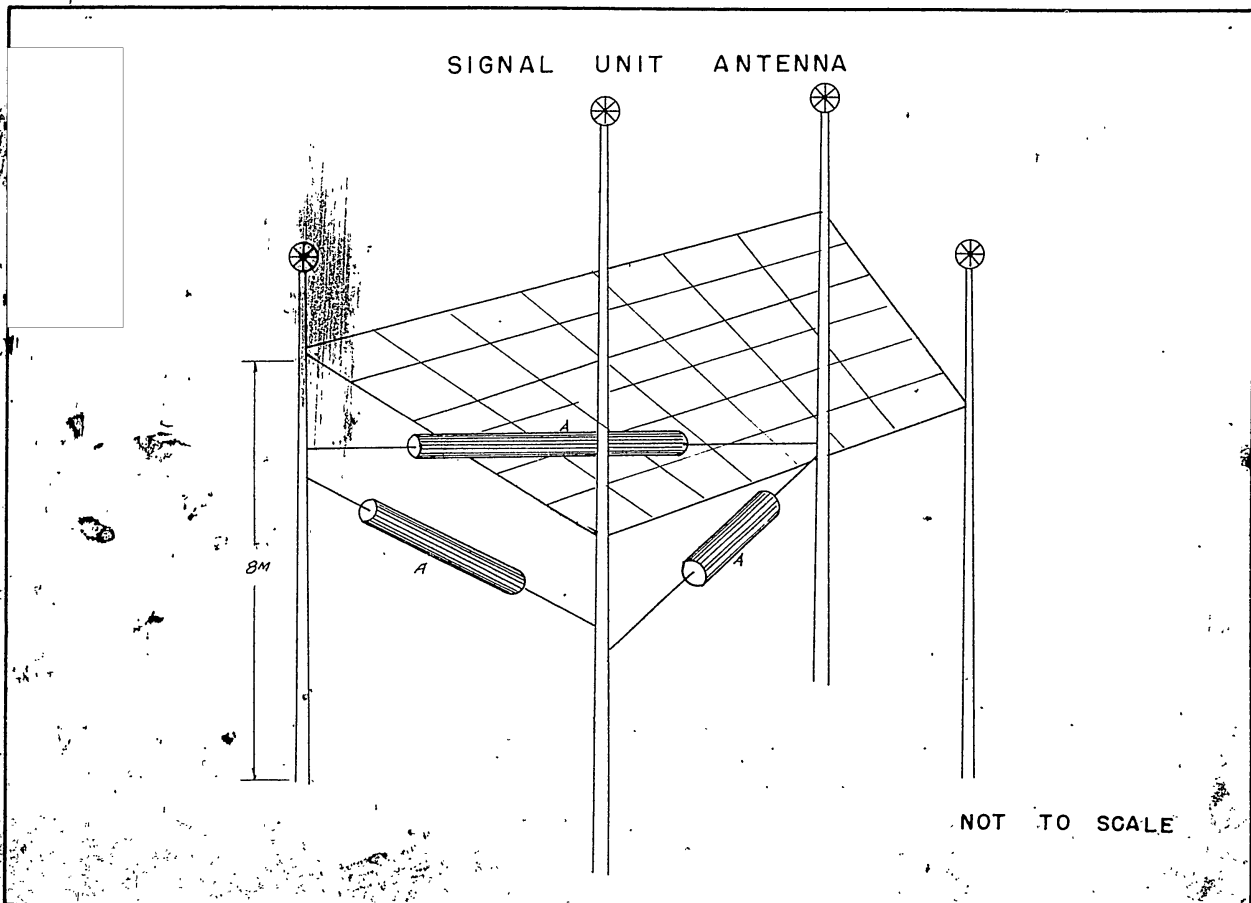
NOT TO SCALE

50X1-HUM

CONFIDENTIAL

SIGNAL UNIT ANTENNA

50X1-HUM

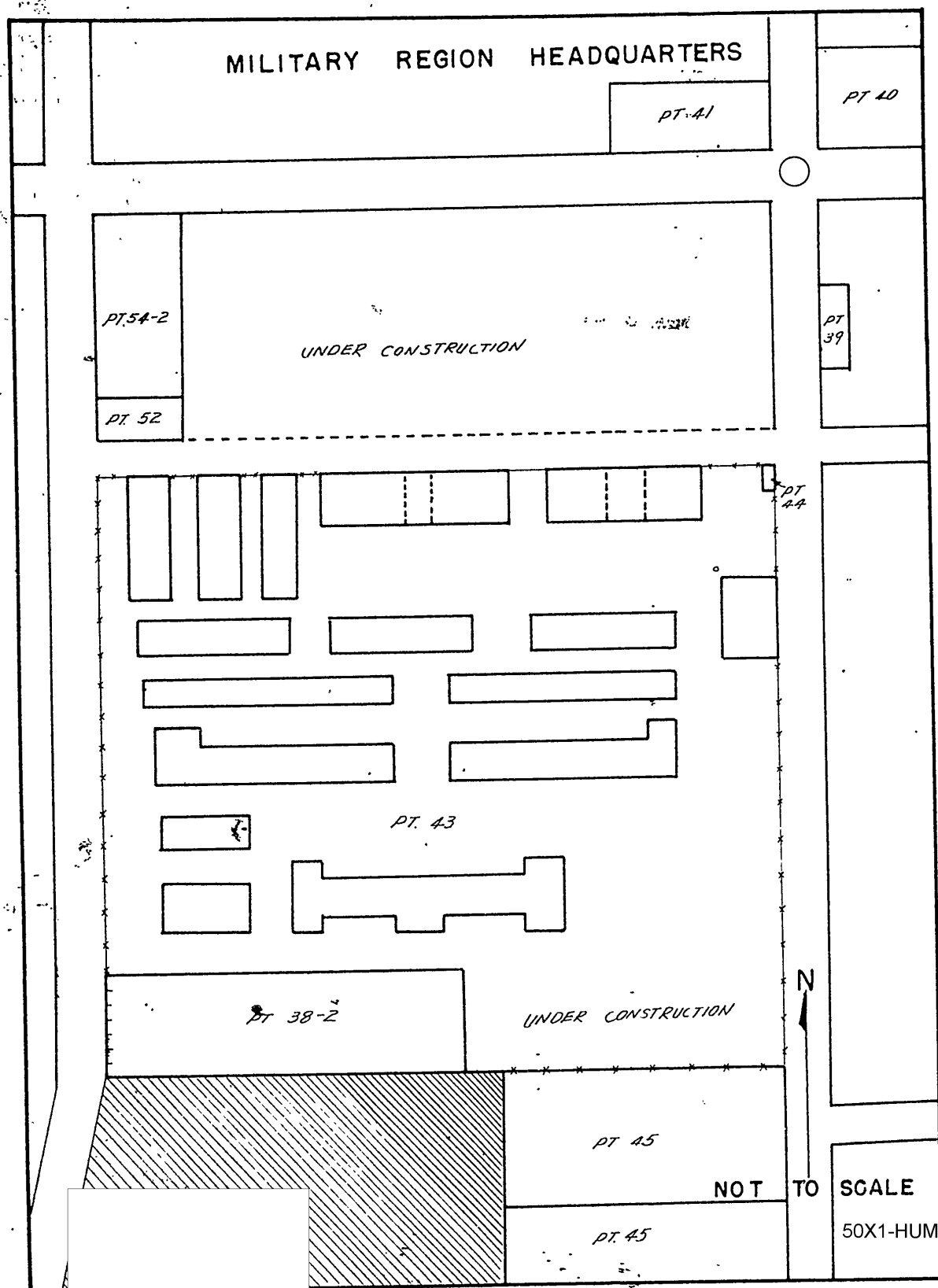


(SAME IDENTICAL)

(SAME IDENTICAL)

46

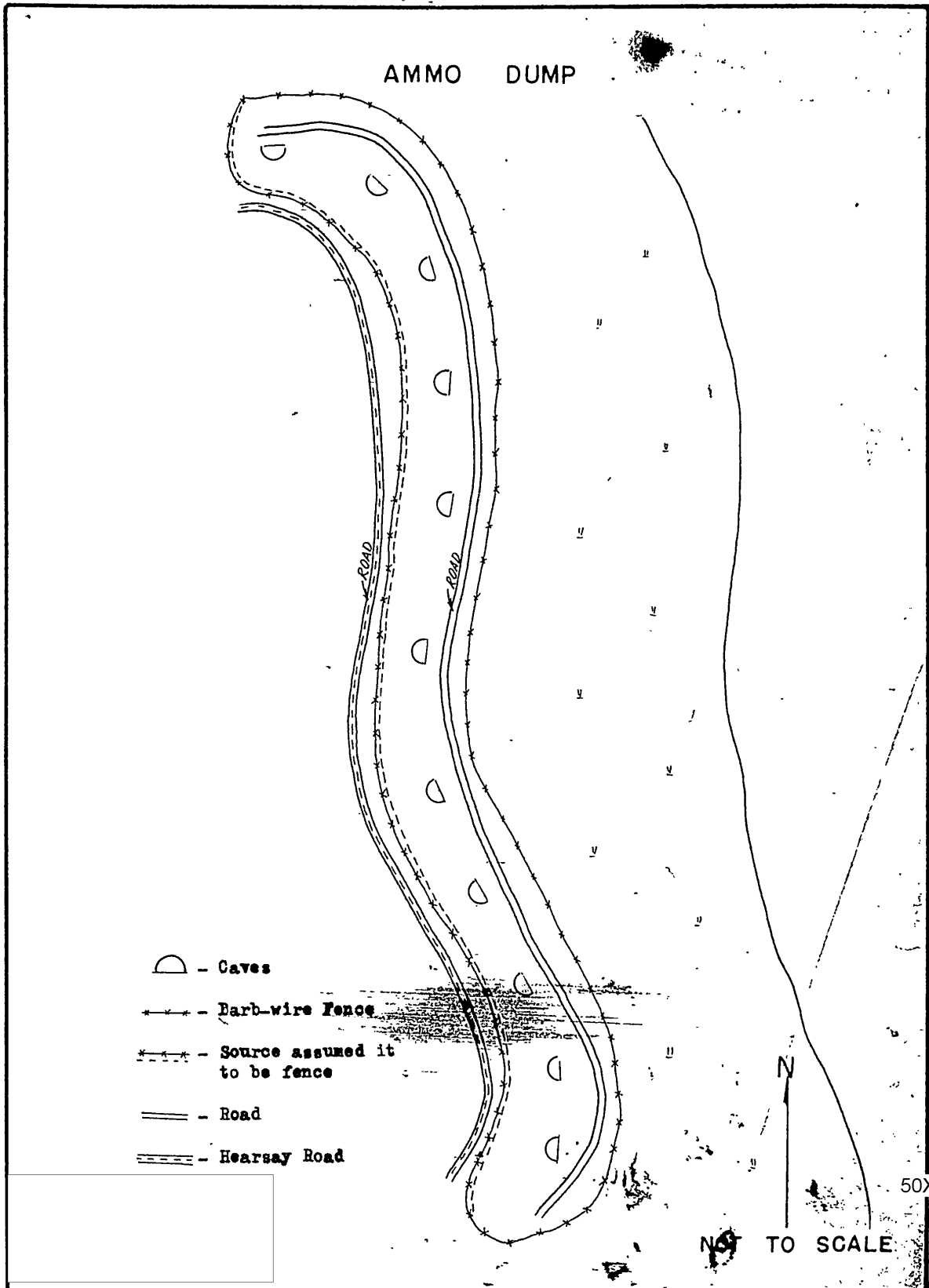
CONFIDENTIAL



CONFIDENTIAL

47

CONFIDENTIAL



- ◐ - Caves
- x—x— - Barb-wire Fence
- x-x- - Source assumed it to be fence
- == - Road
- === - Hearsay Road



NOT TO SCALE

50X1-HUM

CONFIDENTIAL

POOR ORIGINAL





POOR ORIGINAL