

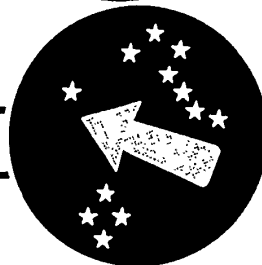
~~CONFIDENTIAL~~

C 1A

HEADQUARTERS
UNITED STATES ARMY, PACIFIC
Office of the Assistant Chief of Staff, G2

20

50X1-HUM



50X1-HUM

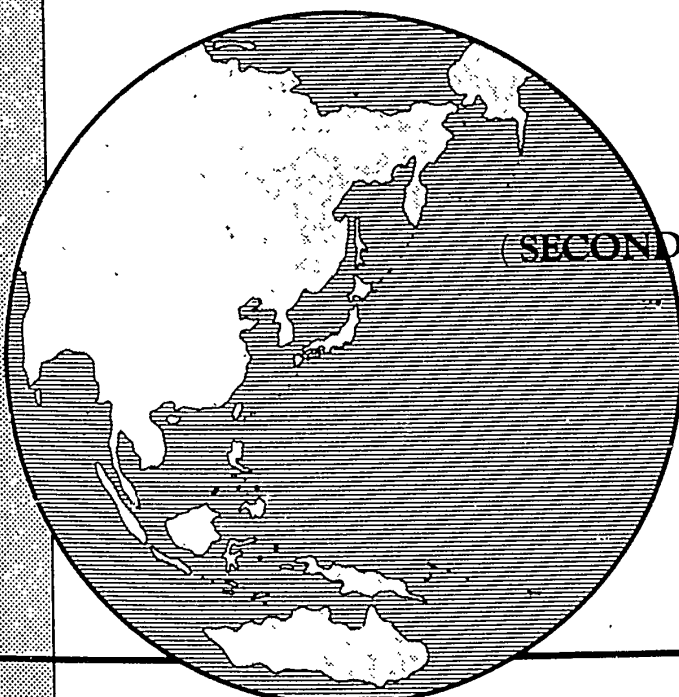
SPECIAL REPORT NR 316

URBAN INTELLIGENCE REPORT SERIES

SOVETSKAYA GAVAN' (U)

KHABAROVSKIY KRAY

USSR



(SECOND EDITION)

COPY NR 013

REGRADING DATA CANNOT BE PREDETERMINED

~~CONFIDENTIAL~~

WARNING

This publication has been prepared by the United States Army Intelligence Support Center; any queries or recommendations concerning the publication should be addressed USARISC, APO 343.

This material contains information affecting the national defense of the United States within the meaning of the Espionage Laws, Title 18, U.S.C., Secs. 793 and 794, the transmission or revelation of which in any manner to an unauthorized person is prohibited by law.

CONFIDENTIAL

**HEADQUARTERS
UNITED STATES ARMY, PACIFIC
Office of the Assistant Chief of Staff, G2**



50X1-HUM

SPECIAL REPORT NR 316

URBAN INTELLIGENCE REPORT SERIES

SOVETSKAYA GAVAN' (U)

KHABAROVSKIY KRAY

USSR

(SECOND EDITION)

CONFIDENTIAL

CONFIDENTIAL

HEADQUARTERS
UNITED STATES ARMY, PACIFIC
Office of the Assistant Chief of Staff, G2

50X1-HUM

3 March 1958

SPECIAL REPORT NR. 316
Urban Intelligence Report Series
SOVETSKAYA GAVAN'
Khabarovskiy Kray
USSR
(Second Edition)

An Urban Intelligence Study of Sovetskaya Gavan', a major Soviet Naval base and commercial port on the Gulf of Tatory, is published herewith. This report is one of a series of intelligence studies published by this Headquarters covering urban areas in the Far East.

This edition is a revision of, and supersedes that portion of Special Report Nr. 41 (GHQ, FEC, 1 Nov 50) pertaining to Sovetskaya Gavan'. Contents have been fully evaluated and can be regarded as finished intelligence.

It is requested that users having additional or conflicting information forward it with comments as to the usability and format of this report to: USARISC APO 343.

50X1-HUM

CONFIDENTIAL

Army-Monitor Copy Report

CONFIDENTIAL

CONFIDENTIAL

SOURCE OF INFORMATION

SPECIAL REPORT NR 316

Urban Intelligence Report Series

SOVETSKAYA GAVAN'

Khabarovskiy Kray
USSR

(Second Edition)

1. Japanese General Staff Map 1:25,000 (Sovgavan'), compiled 1941
2. Japanese General Staff Map 1:100,000 (Sovgavan' and Patta), compiled 1941
3. USHO Chart Nr. 1972, Sovetskaya Gavan', Oct 1939
4. USHO Chart Nr. 2067, Sovetskaya Gavan', Nov 1950
5. AMS N504 1:250,000, Sheet Nrs. NM54-8, NM54-11, 1950
6. Aerial Photograph: 91RS, R-30-27, L0232-257, 21 Sep 1951
7. Intelligence data (1946-1948) obtained through interrogation of 367 selected repatriates
8. Hq, FEC, MIS, GS, Geographic Br, Special Report Nr. 41, 1 Nov 1950
9. ONI Port Series, Apr 1956
10. 500 MIG, PB Reports, 1957
11. USACRAPAC Reports, 1957
12. FBIS Reports, 1955-1957
13. Soviet Periodicals, 1954-1957

CONFIDENTIAL

CONFIDENTIAL

Army Admin Ctr-Japan

CONFIDENTIAL**CONFIDENTIAL**

Sovetskaya Gavan' (48°58'N, 140°18'E)

1956 Population: 60,000 (Official Soviet figure)

<u>Installation</u>	<u>Construction</u>	<u>Roof</u>
1. Military barracks	Wood, 1-story	n/a
2. Ammunition depot	Wood, 1-story	n/a
A. Fire station	Wood, 1-story	Galvanized sheet iron
3. Ammunition and explosives storage	Wood, 1-story	n/a
4. Telephone exchange	Wood, 1-story	n/a
5. De-humidifier station	Wood, 1-story	Galvanized sheet iron
6. Railroad yard		
A. Locomotive shed	Concrete, 1-story	n/a
7. Guard unit barracks	Wood, 1-story	n/a
8. Possible storage area		
9. Coastal defense position		
A. Naval barracks	Wood, 1-story	n/a
B. Weapon site		
10. Coastal defense position (6-guns, searchlights, MG pillboxes, trenches)		
11. Naval barracks	Wood, 1-story	n/a
12. Military warehouses	Wood, 1-story	n/a
13. Military ordnance depot	Wood, 1-story	n/a
14. Camp area (former PW camp)	n/a	n/a
15. Military camp	Wood, 1-story	Galvanized sheet iron

I

CONFIDENTIAL

Army Admin Civ Japan

CONFIDENTIAL

CONFIDENTIAL

<u>Installation</u>	<u>Construction</u>	<u>Roof</u>
16. Possible labor unit barracks	Wood, 1-story	n/a
17. Probable warehouses	Wood, 1-story	n/a
18. Toki Railroad Station and Yard	Wood, 1-story	n/a
19. Wooden pier (ammunition and explosives)		
20. Wharf area		
A. Pier	Concrete (Possible)	
21. Coastal defense position		
A. Barracks	Wood, 1-story	n/a
B. Radio station (naval)	Wood, 1-story	n/a
C. Barracks	Wood, 1-story	n/a
22. Railroad bridges	n/a	
23. Coastal defense position		
24. Camp area (former PW camp)	Wood, 1-story	n/a
25. POL storage area	n/a	
26. Military gasoline supply depot	n/a	
27. Warehouses	Wood, 1-story	n/a
28. Possible warehouses	Wood, 1-story	n/a
29. Military radio station	Wood, 1-story	n/a
30. Medical supply warehouses	Wood, 1-story	n/a
31. Military open storage area		
32. Naval radio station	Wood, semi-underground	n/a
33. Naval barracks and officers' quarters	Wood, 1-story	n/a
34. Possible military barracks	Wood, 1-story	Galvanized sheet iron
35. Warehouses	n/a	n/a

CONFIDENTIAL

CONFIDENTIAL

<u>Installation</u>	<u>Construction</u>	<u>Roof</u>
36. Military sawmill	Wood, 1-story	n/a
37. Security agency office	Wood, 1-story	n/a
38. Auto repair shop	Galvanized sheet iron, 1-story	Galvanized sheet iron
39. Hospital	Wood, 1-story	n/a
40. Vanino Garrison headquarters and officers' quarters	Wood, 1- and 2-story	n/a
A. Motor pool		
41. Primary school	Wood, 1-story	n/a
42. Possible school building	Concrete, 3-story	n/a
43. Possible camp construction site		
44. Explosives warehouses	Wood, 1-story	n/a
45. Military barracks and officers' quarters	Wood, 1-story	n/a
46. Warehouses	Wood, 1-story	n/a
47. Military barracks	Wood, 1-story	n/a
48. Vegetable storage	Wood, semi-underground	n/a
49. Civil food warehouses	Wood, 1- and 2-story	n/a
50. Hospital	Wood, 1-story	n/a
51. Woodworking shop	Wood, 1-story	n/a
52. Hotel	n/a	n/a
53. Vanino port area		
A. Port control office	Wood, 2-story	n/a
B. Railroad freight yard		
C. Auto parts and provisions warehouses	Steel frame, 1-story	Galvanized sheet iron
D. Medical supply warehouses	Steel frame, 1-story	Galvanized sheet iron

CONFIDENTIAL

Army Admin Con-Japan

CONFIDENTIAL

<u>Installation</u>	<u>Construction</u>	<u>Roof</u>
E. Locomotive shed	Wood, 1-story	n/a
F. Military clothing warehouses	Steel frame, 1-story	Galvanized sheet iron
G. Clothing warehouse	n/a	n/a
H. Nr. 2 pier	Concrete	
I. Nr. 1 pier	Concrete	
J. Nr. 3 pier	Concrete	
K. POL tanks	n/a	n/a
54. Auto repair shop	Wood, 1-story	n/a
55. Post office	Wood, 1-story	n/a
56. POL storage area	n/a	n/a
57. Vehicle and machine repair shop	Brick, 1-story	n/a
58. Penal camp (Transient)	Wood, 1-story	n/a
59. Warehouses and open storage	Wood, 1-story	n/a
60. Probable camp area	Wood, 1-story	n/a
61. Auto transportation unit and motor pool	Wood, 1-story	n/a
62. Camp or storage facilities under construction		
63. Vanino Railroad Station and Yard	Wood, 1-story	n/a
64. Railroad bridge	Concrete	
65. Highway bridge	Wood	
66. Camp area (former Nr. 3475 Hospital)	Wood, 1-story	n/a
67. Water pump station	Wood, 2-story	n/a
68. Probable deactivated boatyard	Wood, 1-story	n/a
69. Causeway	n/a	

CONFIDENTIAL**CONFIDENTIAL**

<u>Installation</u>	<u>Construction</u>	<u>Roof</u>
70. Coastal defense position and naval barracks	Wood, 1-story	n/a
71. Naval radio station	Wood, 1-story	n/a
72. Coast guard observation post	n/a	n/a
73. Camp area (former PW camp)	Wood, 1-story	n/a
74. Military barracks.	Wood, 1-story	n/a
75. Camp area (former PW camp)	Wood, 1-story	n/a
76. Military warehouses (clothing and provisions)	Wood, 1-story	n/a
77. Sovetskaya Gavan' Sortirovochnaya Railroad Yard		
A. Railroad employees' quarters	Wood, 1-story	n/a
B. Railroad station	Wood, 2-story	n/a
C. Railroad warehouses	Wood, 1-story	n/a
D. Military warehouses	Wood, 1-story	n/a
E. Locomotive shed	Steel frame and stucco, 1-story	n/a
F. Locomotive maintenance shop	Stucco, 1-story	n/a
G. Freight car repair shop	Steel frame and stucco, 1-story	n/a
H. Boilerhouse	Concrete, 1-story	n/a
I. Water tower	Concrete, 90 feet high	
J. Railroad material warehouses	Wood, 1-story	n/a
78. Camp area (former PW camp)	Wood, 1-story	n/a
79. National Dining Hall	Brick and concrete, 2-story	n/a
80. Auto repair shop	Wood, 1-story	n/a
81. Public library	Wood, 1-story	n/a

CONFIDENTIAL

Army-Admin Cus-Japan

CONFIDENTIAL

<u>Installation</u>	<u>Construction</u>	<u>Roof</u>
82. Administration office	Wood, 2-story	n/a
83. Telephone exchange and maintenance station	Concrete and wood, 1-story	n/a
84. Security agency office	Wood, 1-story	n/a
85. Jail	Wood, 1-story	n/a
86. School	Wood, 2-story	n/a
87. Transformer station	Concrete, 1-story	n/a
88. Theater	Wood, 2-story	n/a
89. National clinic	Wood, 1-story	n/a
90. Apartments	Wood, 2-story	n/a
91. Fire station	Brick, 1-story	n/a
92. Guard unit barracks	Wood, 1-story	n/a
93. Warehouses	Wood, 1-story	n/a
94. Penal camp	Wood, 1-story	n/a
95. Vegetable storage	Wood, 1-story	n/a
96. Penal camp	Wood, 1-story	n/a
97. Machine repair shop	Wood, 1-story	n/a
98. Naval auto repair shop and motor pool	Wood, 1-story	n/a
99. Naval construction material warehouses	Wood, 1-story	n/a
100. Military warehouses	Wood, 1-story	n/a
101. Construction unit barracks	Wood, 1-story	n/a
102. Possible military storage area		
A. Barracks	Wood, 2-story	n/a
103. Probable military barracks	Wood, 1-story	n/a

CONFIDENTIAL

CONFIDENTIAL

<u>Installation</u>	<u>Construction</u>	<u>Roof</u>
104. Naval defense position and barracks	n/a	n/a
105. Probable coast artillery gun emplacement		
106. Coastal defense position and communication hut	Underground	n/a
107. Naval radio station	Wood, 1-story	n/a
108. Military barracks and officers' quarters	Wood, 1-story	n/a
109. Possible railroad station and warehouse construction area	n/a	n/a
110. Probable military warehouse construction site		
111. Coastal defense position and military camp		
A. Naval barracks	Wood, 1-story	n/a
B. Coast artillery gun emplacement		
112. Military barracks and officers' quarters	Wood, 2-story	
113. Naval barracks	Concrete and brick, 3-story	n/a
114. Seaplane station		
115. Officers' club	Concrete, 1-story	n/a
116. Naval officers' quarters	Wood, 2-story	n/a
117. Possible naval warehouses	Wood, 1-story	n/a
118. Torpedo boat base headquarters	Wood, 1-story	Slate
119. Proposed new wharf construction area		
120. POL storage		
121. Naval barracks	Stucco, 1-story	Galvanized sheet iron

CONFIDENTIAL

Army - Admin Corp-Japan

CONFIDENTIAL

<u>Installation</u>	<u>Construction</u>	<u>Roof</u>
122. Naval warehouses	Wood, 1-story	Galvanized sheet iron
123. Naval barracks and officers' quarters	Concrete and wood, 1-story	Galvanized sheet iron
124. Air force officers' quarters	Wood, 1-story	n/a
125. Naval barracks	Concrete and wood, 1- and 2-story	n/a
A. Motor pool		
126. Naval radio station	Brick and wood, 1-story	n/a
127. Possible school building	Concrete, 3-story	n/a
128. Civil warehouses	Wood, 1-story	n/a
129. Naval wharf		
A. Navy club	Stucco, 1-story	n/a
130. Commercial pier	Concrete	
131. Unidentified industrial plant	Wood, 1-story	n/a
132. Theater	Wood, 2-story	n/a
133. Naval meteorological station	Concrete, 1- and 2-story	n/a
134. Apartments	Concrete and brick, 2-story	n/a
135. Camp area (former PW camp)	Wood, 1-story	n/a
136. Naval radio station	Concrete, 1-story	n/a
137. Theater and naval club	Stucco, 1-story	Galvanized sheet iron
138. Naval communication unit barracks	Wood, 1-story	n/a
139. Possible military installation	n/a	n/a
140. Possible radar or radio installation	n/a	n/a

CONFIDENTIAL

CONFIDENTIAL

<u>Installation</u>	<u>Construction</u>	<u>Roof</u>
141. Naval officers' and dependents' quarters	Concrete and wood, 1- and 2-story	n/a
142. Naval hospital	Concrete, 2-story	n/a
143. Probable naval barracks and officers' quarters	Concrete, 2- and 3-story	Galvanized sheet iron
144. Naval barracks	Stucco, 1-story	n/a
145. Submarine base and fleet headquarters		
A. Wharf area		
B. Barracks	Concrete, 3-story	n/a
C. Repair shop	Concrete, 2-story	n/a
D. Frigate anchorage area		
146. Naval barracks	Wood, 1-story	n/a
147. Naval barracks and officers' club	Wood, 2-story	n/a
148. Army barracks	Wood, 1-story	n/a
149. Naval dependents' quarters	Wood, 1-story	n/a
150. Naval athletic field		
151. Naval radio station	Wood, 1-story	n/a
152. Air force transportation unit headquarters and barracks	Wood, 1-story	n/a
A. Motor pool		
153. Auto repair shop	Wood, 1-story	n/a
154. Army barracks	Wood, 1-story	n/a
155. Air force fighter unit headquarters and barracks	Wood, 1-story	n/a
156. Sovetskaya Gavan'/Vanino Military Airfield		
157. Air force barracks and gasoline station	Wood, 1-story	n/a

CONFIDENTIAL

Army-Admin Cens-Japan

CONFIDENTIAL

<u>Installation</u>	<u>Construction</u>	<u>Roof</u>
158. Airfield guard unit barracks	Wood, 1-story	n/a
159. POL tanks	n/a	n/a
160. Torpedo warehouses	Wood, 1-story	n/a
161. Naval bakery	Wood, 1-story	n/a
162. Probable military barracks	Wood, 1-story	n/a
163. Possible POL storage area	n/a	n/a
164. POL tanks	n/a	n/a
165. Transformer station	Concrete, 1-story	n/a
166. Naval warehouses	Wood, 1-story	n/a
167. Naval hospital		
A. Main building	Brick, 3-story	n/a
168. Ammunition depot	Wood, 1-story	n/a
169. Highway bridge	n/a	n/a
170. Military barracks	Wood, 1-story	n/a
171. Apartments	Wood, 2-story	n/a
172. Water supply office and heating plant	Concrete, 1-story	n/a
173. Primary schools	Wood	n/a
174. Theater	Wood, 1-story	n/a
175. National clinic	Wood, 1-story	n/a
176. Civil administration office	Wood, 1-story	n/a
177. Thermoelectric powerplant		
A. Pier	Wood	
B. Sawmill	Wood, 1-story	n/a
C. Powerplant with 4 smoke-stacks	Concrete, 4-story	n/a

10
CONFIDENTIAL

CONFIDENTIAL

<u>Installation</u>	<u>Construction</u>	<u>Roof</u>
D. Sub-station	Concrete, 1-story	n/a
E. Engineering work shop	Wood, 1-story	n/a
F. Warehouse	Wood, 1-story	n/a
G. Guard house	Wood, 1-story	n/a
178. Sovetskaya Gavan' /Byaude Military Landing Strip		
179. POL tanks	n/a	n/a
180. Coal pier (naval)	n/a	n/a
181. Naval wharves	n/a	
182. Naval warehouses	Wood, 1-story	n/a
183. Naval food warehouses	Wood, 1-story	n/a
184. Signal station	Wood, 1-story	n/a
185. Sovetskaya Gavan' Seaplane Station (military and civilian)		
A. Hangar	n/a	
B. Probable operations and control tower	n/a	
186. Fleet Air Arm Headquarters Byaude	Concrete and wood, 1- and 2-story	n/a
187. Military athletic field		
188. Possible military warehouses	Wood, 1-story	n/a
189. Naval officers' quarters	Wood, 2-story	n/a
190. POL storage area		
A. Underground storage area		
B. Offshore pipeline berth		
191. Water supply and ferry boat pier		
192. Military warehouses	Wood, 1-story	n/a

CONFIDENTIAL

CONFIDENTIAL

<u>Installation</u>	<u>Construction</u>	<u>Roof</u>
193. Military barracks	Wood, 1-story	n/a
194. Naval munitions storage area	Wood, 1-story	n/a
195. Military barracks	Wood, 1-story	n/a
196. Ammunition storage area	Wood, semi-under-ground	n/a
197. Water pump station	Wood, 2-story	n/a
198. Water pump station	Concrete, 1-story	n/a
199. Camp area (former PW camp)	Wood, 2-story	n/a
200. Primary school	Wood, 1-story	n/a
201. Possible penal camp	Wood, 1-story	n/a
202. Telephone exchange and fire station	Wood, 1-story	n/a
203. Nr. 20 Sawmill		
A. Nr. 1 workshop	Wood, 1-story	n/a
B. Nr. 2 workshop	Wood, 1-story	n/a
C. Nr. 3 workshop	Wood, 1-story	n/a
D. Nr. 4 workshop	Wood, 1-story	n/a
E. Boilerhouse	Brick and wood, 1-story	n/a
F. Electric sub-station	Concrete, 1-story	n/a
204. Lumber loading pier		
205. Patrol boat base		
A. Repair shops	Wood, 1-story	n/a
B. POL storage area		
C. Provisions warehouse	Wood, 1-story	n/a
D. Headquarters	Wood, 1-story	n/a

CONFIDENTIAL

CONFIDENTIAL

<u>Installation</u>	<u>Construction</u>	<u>Roof</u>
E. Radio station	Wood, 1-story	n/a
F. Barracks	Wood, 1-story	n/a
G. Battery shop	Wood, 1-story	n/a
H. Ammunition storage	Wood, 1-story	n/a
I. Warehouse	Wood, 1-story	n/a
206. POL storage area		
207. Possible POL storage area		
208. Fish cannery (Sovetskaya Gavan' Fishing Combine)		
A. Cold storage building	Concrete, 1-story	n/a
B. Cannery	Brick and wood, 1-story	n/a
C. Main office	Wood, 1-story	n/a
D. Warehouses	Wood, 1-story	n/a
E. Machine shop	Wood, 1-story	n/a
F. Salting plant	Wood, 1-story	n/a
G. Woodworking shops	Wood, 1-story	n/a
H. Fishing boat repair shop	Wood, 1-story	n/a
209. Fire station	Wood, 2-story	n/a
210. Primary school	Wood, 2-story	n/a
211. Naval pier and seaplane anchorage area		
212. Coastal defense position (4 guns)		
213. Probable coastal defense position		
214. Military barracks		n/a
215. Military camp		

CONFIDENTIAL

CONFIDENTIAL

<u>Installation</u>	<u>Construction</u>	<u>Roof</u>
A. Barracks	Wood, 1-story	n/a
B. Possible storage area	Wood, 1-story	n/a
C. Officers' quarters	Wood, 1-story	n/a
216. Sovetskaya Gavan' Airfield (military and civilian)		
A. POL storage area		
B. Auto repair shop and motor pool	Wood, 1-story	n/a
C. Repair and maintenance shops	Steel frame, 1-story	n/a
217. Air force unit headquarters and garrison		
A. Officers' quarters	Brick and wood, 2- and 3-story	n/a
B. Blacksmith shop	Wood, 1-story and semi-underground	n/a
C. Welding shop	Wood, 1-story and semi-underground	n/a
D. Machine shop	Wood, 1-story and semi-underground	n/a
E. Headquarters	Wood, 2-story	n/a
F. Barracks	Wood, 1-story	n/a
G. Radio station	Wood, 1-story	n/a
218. Aircraft engine testing shop	Wood, 1-story	n/a
219. Possible naval barracks	Wood, 1-story	n/a
220. Air force POL storage area	Wood, 1-story	n/a
221. Flour mill		
A. Mill	Concrete, 4-story	n/a
B. Products warehouses	Wood, 1-story	n/a
C. Grain warehouses	Wood, 1-story	n/a

CONFIDENTIAL

CONFIDENTIAL

<u>Installation</u>	<u>Construction</u>	<u>Roof</u>
222. Naval dispensary	Wood, 1-story	n/a
223. Possible defense position		
224. Military radio station	Wood, 1-story	n/a
225. Naval barracks	Wood, 1-story	n/a
226. Icebreaker anchorage point		
227. Nr. 1 Shipyard		
A. Lumber warehouse	Wood, 1-story	n/a
B. Woodworking shop	Brick and wood, 2-story	n/a
C. Material warehouses	Wood, 1-story	n/a
D. Boilerhouse	Brick, 2-story	n/a
E. Forge shop	Brick, 1-story	n/a
F. Plate and welding shop	Brick, 2-story	n/a
G. Electrical machine shop	Brick	n/a
H. Administration building	Wood, 2-story	n/a
I. POL warehouse	n/a	
J. Foundry	Brick, 1-story	n/a
K. Material warehouse	Wood, 1-story	n/a
L. Parts and clothing warehouse	Wood, 1-story	
M. Sawmill	Wood, 1-story	n/a
N. POL tanks	n/a	
228. Transformer station	Concrete, 1-story	n/a
229. Food warehouses	Wood, 1-story	n/a
230. Camp area (former PW camp)	Wood, 1-story	n/a
231. Theater and club	Brick, 3-story	n/a

CONFIDENTIAL

Army Admin Civ Assist

CONFIDENTIAL

<u>Installation</u>	<u>Construction</u>	<u>Roof</u>
232. Military and civil apartments	Concrete and brick, 2-story	n/a
233. Water pump station	Wood, 2-story	n/a
234. Water tower	Concrete, 90 feet high	n/a
235. School building	Concrete, 3-story	n/a
236. Apartment and office buildings	Concrete and brick, 2- and 3-story	n/a
237. Civil hospital	Concrete, 2- and 3-story	n/a
238. Radio telegraph office	Wood, 1-story	n/a
239. MVD Unit headquarters	Wood, 2-story	n/a
240. Sovetskaya Gavan' Commercial Wharf		
A. Port control office	Wood, 2-story	n/a
241. Security agency office	Wood, 1-story	n/a
242. Newspaper office	Wood, 1-story	n/a
243. Machine tools manufacturing shop	Wood, 1-story	n/a
244. Political and administrative office	Brick and wood, 2-story	n/a
245. Theater	Wood, 2-story	n/a
246. Civil hospital	Wood, 2-story	n/a
247. Nr. 263 Naval Shipyard		
A. Air compressor and electric sub-station	Concrete, 1-story	n/a
B. Warehouse	Wood, 1-story	n/a
C. Machine shop	Concrete, 2-story	n/a
D. Foundry and electrical shop	Concrete, 2-story	n/a
E. Fabricating and welding shop	Concrete, 1-story	n/a
F. Woodworking shop, warehouse and billets	Concrete, 3-story	n/a

CONFIDENTIAL**CONFIDENTIAL**

<u>Installation</u>	<u>Construction</u>	<u>Roof</u>
G. Office and guard house	Wood, 2-story	n/a
H. Boilerhouse	Concrete, 2-story	n/a
I. Fire engine shed	Wood, 1-story	n/a
J. Quay		
248. Transformer station	Brick, 1-story	n/a
249. Medical supply warehouse	Wood, 1-story	n/a
250. Auto repair shop	Wood, 1-story	n/a
251. Provisions warehouses	Wood, 1-story	n/a
252. Camp area (former PW camp)	Wood, 1-story	n/a
253. Naval radio station	Wood, 1-story	n/a

CONFIDENTIAL

Army-Admin Ctr-Japan

CONFIDENTIALBREAKDOWN OF SELECTED IDENTIFIED INSTALLATIONS BY FUNCTION

1. Communications

A. Telecommunications and Postal Installations

- (21-B), (71), (126), (136), (151) & (253) Naval radio stations
- (29), (32) & (224) Military radio stations
- (55) Post office
- (83) Telephone exchange and maintenance station
- (133) Naval meteorological station
- (138) Naval communication unit barracks
- (140) Possible radar or radio installation
- (184) Signal station
- (253) Radio telegraph office

B. Transportation Installations

a. Rail

- (6) Railroad yard
- (18) Toki Railroad Station and Yard
- (63) Vanino Railroad Station and Yard
- (77) Sovetskaya Gavan' Sortirovochnaya' Railroad Yard
- (109) Possible railroad station and warehouse construction site

b. Road

- (61) Auto transportation unit and motor pool
- (152-A) Air force unit motor pool

c. Water

- (19) Wooden pier (ammunition and explosives)
- (20) & (211) Wharf areas
- (53) Vanino port area
- (119) Proposed new wharf construction area
- (129), (145-A) & (181) Naval wharves
- (130) Commercial pier
- (180) Naval coal pier
- (240) Sovetskaya Gavan' commercial wharf
- (247-J) Nr. 263 Naval Shipyard Wharf

d. Air

- (114) Seaplane station
- (156) Sovetskaya Gavan'/Vanino Military Airfield
- (178) Sovetskaya Gavan'/Byaude Military Landing Strip
- (185) Sovetskaya Gavan'/Seaplane Station (Mil & Civ)
- (216) Sovetskaya Gavan' Airfield (Mil & Civ)

CONFIDENTIAL**CONFIDENTIAL**

2. Industries

A. Repair and Construction Facilities

- (36) Military sawmill
- (38), (54) & (250) Auto repair shops
- (57) Vehicle and machine repair shop
- (77-F & G) Locomotive maintenance shop and freight car repair shop
- (97) Machine repair shop
- (98) Naval auto repair shop and motor pool
- (131) Unidentified industrial plant
- (145-C) Repair shop (submarine and frigate)
- (203) Nr. 20 Sawmill
- (216-C) Aircraft repair and maintenance shops
- (217-B, C & D) Blacksmith, welding and machine shops
- (218) Aircraft engine testing shop
- (227) Nr. 1 Shipyard
- (243) Machine tools manufacturing shop
- (247) Nr. 263 Naval Shipyard

B. Food Processing Industries

- (208) Sovetskaya Gavan' Fishing Combine
- (221) Flour mill

C. Electric Power Industry

- (87), (165), (228) & (248) Transformer stations
- (177) Thermoelectric powerplant
- (203-F) Electric sub-station

3. Storage Facilities

A. Military

- (2) & (168) Ammunition depots
- (3) Ammunition and explosives storage
- (8) Possible storage area
- (12), (27), (76), (100) & (192) Military warehouses
- (13) Military ordnance depot
- (26) Military gasoline supply depot
- (28) & (188) Possible warehouses
- (30) Medical supply warehouses
- (31) Military open storage area
- (99) Naval construction material warehouses
- (120), (159), (164), (179) & (190) POL storages
- (160) Torpedo warehouses
- (163) Possible POL storage area
- (166) & (182) Naval warehouses
- (183) Naval food warehouses

CONFIDENTIAL

CONFIDENTIAL

- (194) Naval munition storage area
- (196) Ammunition storage area
- (220) Air force POL storage area

B. Non-military

- (25) (206) POL storage area
- (35), (93) & (128) Warehouses
- (44) Explosives warehouses
- (48) & (95) Vegetable storages
- (49) & (229) Civil food warehouses
- (53-C, D & G) Auto parts and provisions, medical supply, and clothing warehouses
- (207) Possible POL storage area
- (208-A & D) Cold storage and warehouses
- (221-B & C) Flour and grain warehouses
- (240) Sovetskaya Gavan' commercial wharf warehouses
- (251) Provisions warehouses

4. Military Headquarters

- (40) Vanino garrison headquarters and officers' quarters
- (118) Torpedo boat base headquarters
- (145) Submarine base and fleet headquarters
- (152) Air force transportation unit headquarters and barracks
- (155) Air force fighter unit headquarters and barracks
- (186) Fleet Air Arm Headquarters Byaude
- (205-D) Patrol boat base headquarters
- (217) Air force unit headquarters
- (239) MVD unit headquarters

5. Government and Political offices

- (37), (84) & (241) Security agency offices
- (58) Penal camp (transient)
- (60) Probable camp area
- (82) & (176) Administration offices
- (85) Jail
- (94) & (96) Penal camps
- (135), (230) & (252) Camp areas (former PW camps)
- (201) Possible penal camp
- (242) Newspaper office
- (244) Political and administration offices

6. Hospital

A. Military

- (142) & (167) Naval hospital
- (222) Naval dispensary

CONFIDENTIAL**CONFIDENTIAL**

B. Non-military

- (39), (50), (237) & (246) Hospital
- (89) & (175) National clinics

7. Schools and Public buildings

A. Schools

- (42) & (127) Possible school buildings
- (86) & (235) Schools

B. Public Buildings

- (79) National Dining Hall
- (88), (132), (137), (231) & (245) Theaters

8. Billeting facilities

A. Military

- (7) Guard unit barracks
- (15) & (215) Military camps
- (34) & (162) Possible military barracks
- (45), (108) & (112) Military barracks and officers' quarters
- (47), (74) & (170) Military barracks
- (103) Probable military barracks
- (111-A), (113), (121), (125), (145-B) & (225) Naval barracks
- (123) Naval barracks and officers' quarters
- (139) Possible military installation
- (141) Naval officers' and dependents' quarters
- (143) Probable naval barracks and officers' quarters
- (149) Naval dependents' quarters
- (152) & (155) Air force unit barracks
- (189) Naval officers' quarters
- (217-A) Air force officers' quarters

B. Non-military

- (90), (134) & (171) Apartments
- (232) Military and civilian apartments
- (236) Apartments and office buildings

9. Defense Positions

- (9), (10), (21), (23), (70), (106) & (212) Coastal defense positions
- (72) Coast guard observation post
- (104) Naval defense position
- (105) Probable coast artillery gun emplacement

CONFIDENTIAL

CONFIDENTIAL

- (111-11) Coast artillery gun emplacement
- (213) Probable coastal defense position
- (223) Possible defense position

CONFIDENTIAL

CONFIDENTIAL

Further Information Required:

General

1. Changes, confirmation, and current information of installations identified on accompanying maps.
2. Detailed description of all military activities, especially naval.
3. Detailed account of cargo movement to include full description of transport carriers, facilities, and type, amount, markings, origin, and destination of goods in transit.
4. Detailed description of war-supporting industries, POL facilities, and all types of storage to include type, amount, markings, origin, and destination of goods in storage.
5. Discussion of degree and duration of obstruction to navigation caused by ice formation in the various bays.
6. Determination of dissidence potential among local population.
7. Maps, photos, publications such as telephone books, census data, etc. dealing with the city and its environs.

Specific

1. Details concerning an expected southward extension of the railroad (77 and/or 119).
2. Full description of reported large-scale improvements in the commercial vanino port area (53).
3. Description of causeway (69) with possible accommodation of railroad extension.
4. Description, location, and function of floating drydock reportedly sent from European USSR.
5. Description and capacity of POL storage area reported east of naval wharves (181).
6. Street names, house numbering system, and construction data of structures.
7. Location and description of following installations reportedly in Sovetskaya Gavan' area:
 - a. Television center
 - b. Stone-block factory
 - c. Brick factory

CONFIDENTIAL

CONFIDENTIAL

- d. Asphalt plant
- e. Ferroconcrete component plant
- f. Higher technical school
- g. Hospitals under construction

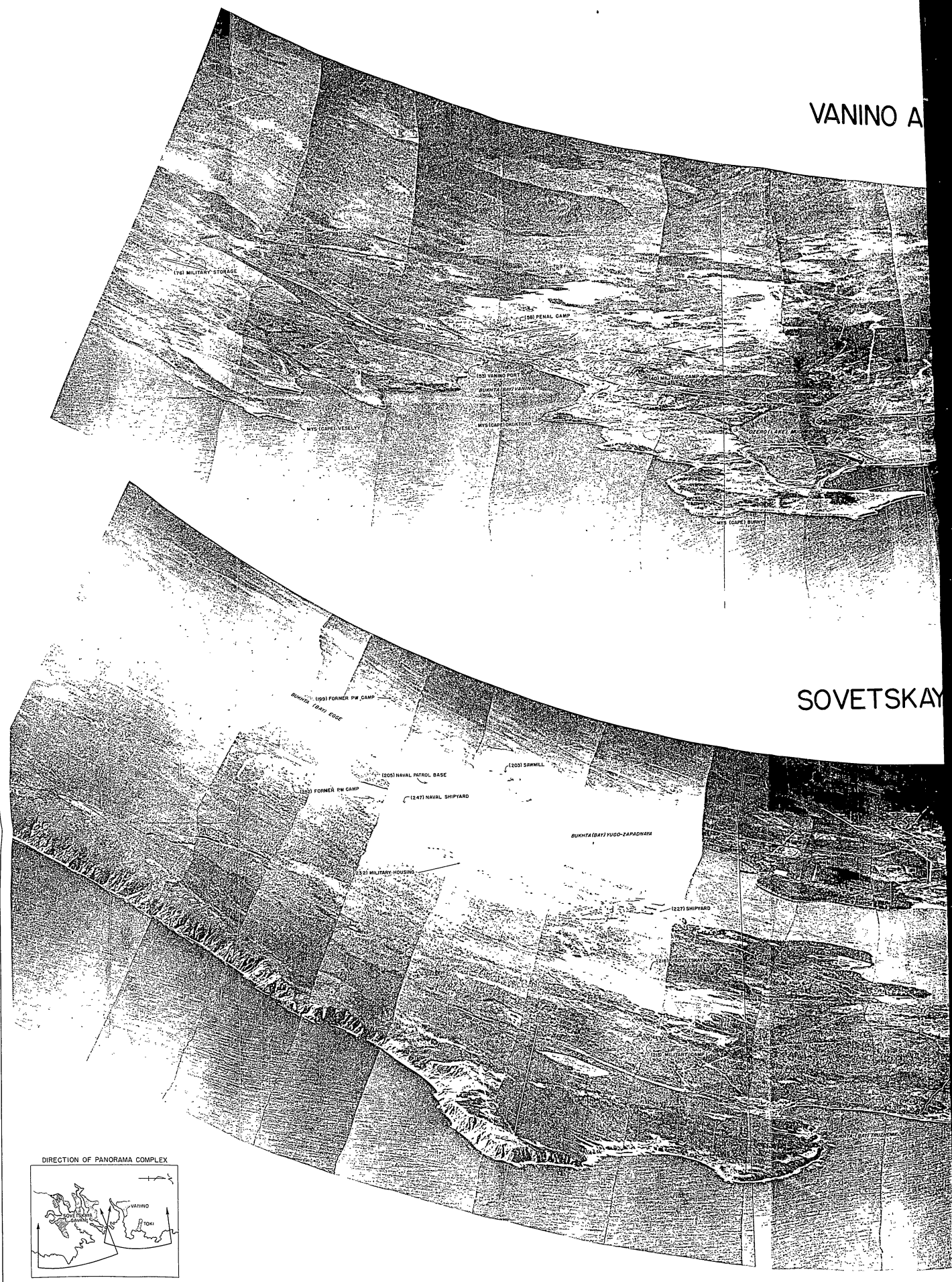
Recipients having additional information or comments on any aspect of this study are requested to forward such information to USARPAC, Intelligence Support Center, APO 343, for use in future revisions.

CONFIDENTIAL

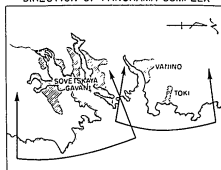
CONFIDENTIAL

VANINO A

SOVETSKAY



DIRECTION OF PANORAMA COMPLEX

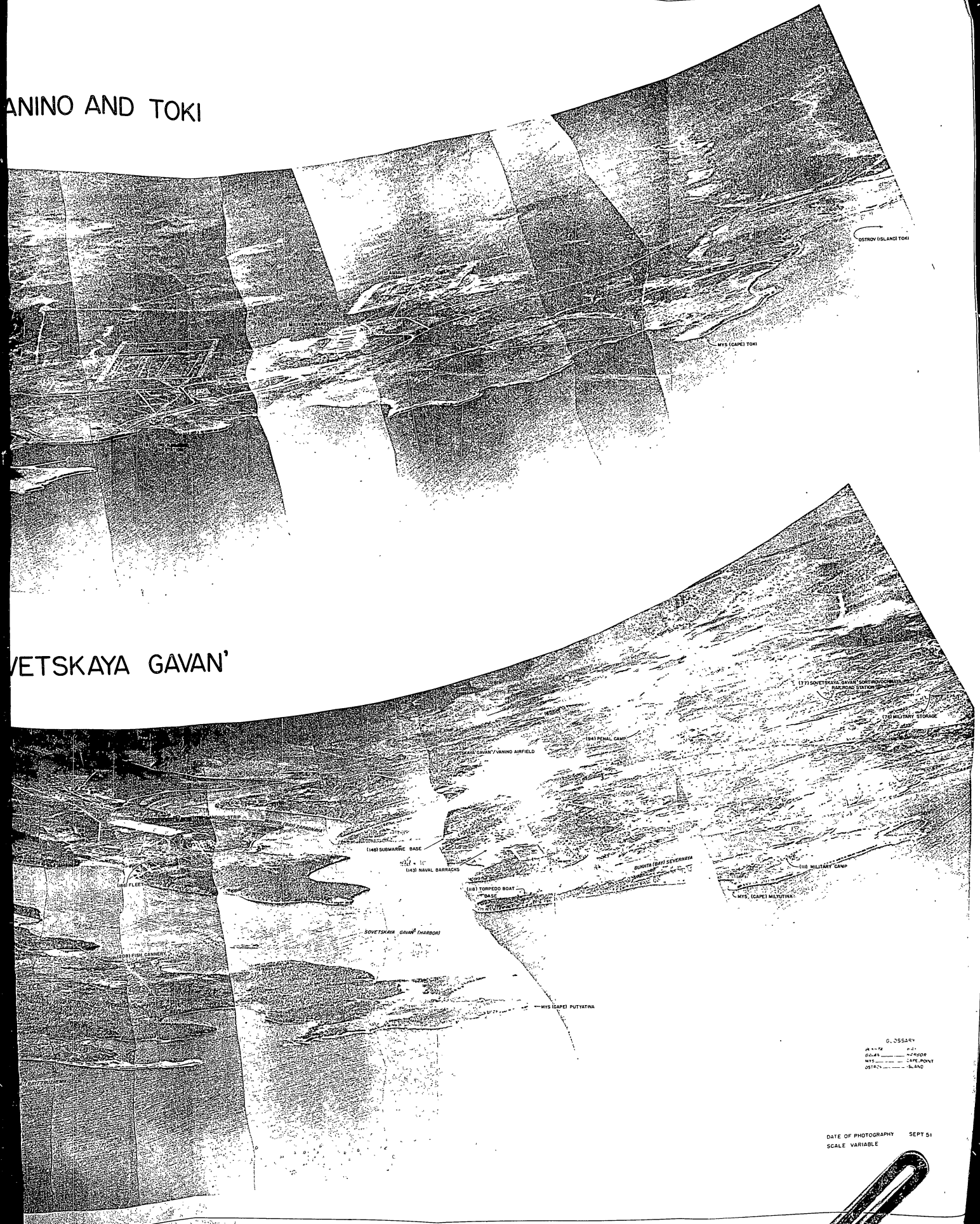


CONFIDENTIAL

CONFIDENTIAL

ANINO AND TOKI

VETSKAYA GAVAN'



OSTROV (ISLAND) TOKI

MYS (CAPE) TOKI

1711 SOVetskaya Gavan' Sortirovочnyy Sledovoye Sostoyaniye

170 MILITARY STORAGE

171 PENAL CAMP

1711 SOVetskaya Gavan' Airfield

140 SUBMARINE BASE

142 NAVAL BARRACKS

118 TORPEDO BOAT BASE

DUMITA (BAY) SEVERNAYA

118 MILITARY CAMP

MYS (CAPE) MILYUTINA

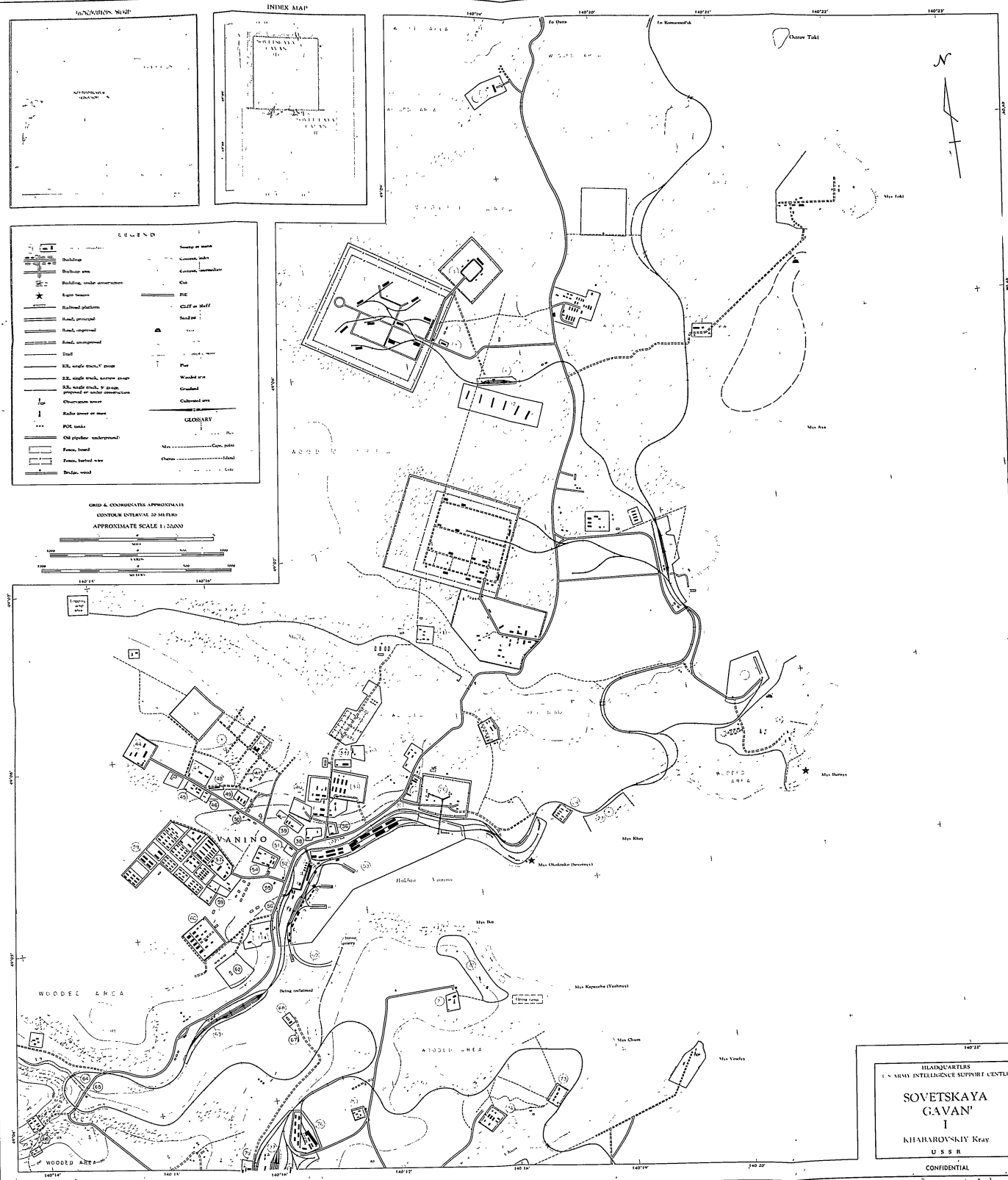
SOVetskaya Gavan' (Harbor)

MYS (CAPE) PUTYATINA

GLOSSARY
 A-1-72 1-2
 OSLAN 1-10000
 MYS 1- CAPE POINT
 OSTROV 1- ISLAND

DATE OF PHOTOGRAPHY SEPT 51
 SCALE VARIABLE

CONFIDENTIAL



LEGEND

[Symbol]	Building	[Symbol]	Island or marsh
[Symbol]	Building, under construction	[Symbol]	Canal, lock
[Symbol]	Railroad platform	[Symbol]	Canal, dam
[Symbol]	Road, principal	[Symbol]	Cliff or shelf
[Symbol]	Road, unimproved	[Symbol]	Sand pit
[Symbol]	Dike	[Symbol]	Well
[Symbol]	R.R. single track, 1st class	[Symbol]	Power
[Symbol]	R.R. single track, narrow gauge	[Symbol]	Wooded area
[Symbol]	R.R. double track, 2d class, principal or under construction	[Symbol]	Gravel
[Symbol]	Charcoal tower	[Symbol]	Cultural site
[Symbol]	Rake tower or mast	[Symbol]	Capo, point
[Symbol]	POW camp	[Symbol]	Island
[Symbol]	Old pipeline underground	[Symbol]	Islet
[Symbol]	Fence, board	[Symbol]	
[Symbol]	Fence, barbed wire	[Symbol]	
[Symbol]	Bridge, wood	[Symbol]	

GRID & COORDINATES APPROXIMATE
 CONTOUR INTERVAL 20 METERS
 APPROXIMATE SCALE 1:20,000

HEADQUARTERS
 U.S. ARMY INTELLIGENCE SUPPORT CENTER
**SOVETSKAYA
 GAVAN'**
 I
 KHABAROVSKIY Krai
 U.S.S.R.
 CONFIDENTIAL

CONFIDENTIAL

50X1-HUM

Page Denied