

CONFIDENTIAL

(c) NATIONAL PHOTOGRAPHIC INTERPRETATION CENTER

REFERENCE:



ATTACHMENT TO K-9791 25X1
07 JUNE 1966
PAGE 1

ROUTE 914
PANHANDLE AREA, LAOS

(SEE NPIC BRIEFING BOARDS K-7379 AND K-7801 FOR COMPARISON)

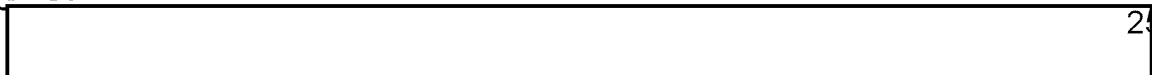
1. SIGNIFICANCE:

THIS BRIEFING BOARD DEPICTS THE ALIGNMENT AND STATUS OF ROUTE 914 IN THE LAOTIAN PANHANDLE.

2. REMARKS:

ROUTE 914 WAS FIRST OBSERVED UNDER CONSTRUCTION IN DECEMBER 1965; BY MID-MARCH 1966 THE ALIGNMENT OF THE ROAD WAS EVIDENT WITH THE EXCEPTION OF AN 8.5 NM CENTER SEGMENT, AND BY LATE MARCH ONLY 0.5 NM SEPARATED THE TWO SEGMENTS OF ROAD. THE COMPLETED ROAD EXTENDS BETWEEN ROUTES 91 AND 92 AND BY-PASSES ROUTE 9 THROUGH SEPONE AND BAN DONG.

3. MISSION READOUT:



25X1

REVEAL THE FOLLOWING INFORMATION ON THE STATUS OF ROUTE 914:

A. ROUTE 914, FROM ITS JUNCTION WITH ROUTE 91 AT 1645N 10608E TO ITS JUNCTION WITH ROUTE 9 AT 1641N 10608E, APPEARS IN DISUSE. BY-PASSING THIS SEGMENT OF ROAD, TRAFFIC MOVING SOUTH FROM ROUTE 911 COULD CONTINUE ON ROUTE 91, SOUTHWEST ON ROUTE 9, THEN SOUTHEAST ONTO THE MORE USED PORTION OF ROUTE 914. ROUTE 914 SOUTH AND SOUTHEAST OF ROUTE 9 SHOWS MEDIUM USAGE (NOT SHOWN ON GRAPHIC). RECENT RAINS APPARENTLY HAVE NOT INTERRUPTED THE FLOW OF TRAFFIC.

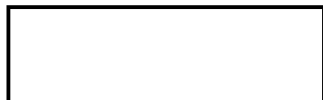
These notes have been prepared for briefing purposes only and should not be used for detailed analytical work. Their use should be restricted to the particular briefing board(s) they were prepared for and must be considered valid only for the reporting period as indicated by the date of issue. For information concerning these notes contact Chief, Collateral Support Division, NPIC.

GROUP 1
Excluded from automatic
downgrading and declassification

CONFIDENTIAL

CONFIDENTIAL**(c) NATIONAL PHOTOGRAPHIC INTERPRETATION CENTER**

REFERENCE:

ATTACHMENT TO K-9791 25X1
07 JUNE 1966
PAGE 2

B. THE PREVIOUSLY REPORTED FORD ON ROUTE 914 ACROSS THE SE BANG HIENG (RIVER) AT 1638N 10612E (UTM XD282405) IS UNSERVICEABLE DUE TO HIGH WATER AND RECENT AIR STRIKES. NO ATTEMPT HAS BEEN MADE TO FILL OR BY-PASS THE BOMB CRATERS ON THE SOUTHERN APPROACH. A NEWLY OBSERVED FERRY CROSSING IS LOCATED 0.3 NM EAST OF THE FORD AT UTM XD286406. THE APPROACHES TO THIS FERRY CROSSING HAVE BEEN KEPT IN REPAIR AFTER RECENT AIR STRIKES. A POSSIBLE FERRY BOAT IS OBSERVED JUST EAST OF THE FERRY CROSSING MOORED ADJACENT TO THE SOUTH RIVER BANK AT UTM XD287406. LOCATED NORTH OF THE FERRY CROSSING AT UTM XD285408 IS AN UNOCCUPIED FOUR-GUN HMGAA SITE.

C. VEHICLE TRACKS ARE OBSERVED ALONG A PORTION OF ROUTE 914 AT 1634N 10614E.

D. A FORD IS OBSERVED ON ROUTE 914 AT 1630N 10624E.

E. VEHICLE TRACKS ARE OBSERVED ALONG A PREVIOUSLY EXISTING TRAIL CONNECTING ROUTE 914 WITH ROUTE 92. TRACKS EXTEND FROM ROUTE 914 AT 1627N 10628E (UTM XD568197) EAST-NORTHEAST TO ROUTE 92 AT 1627N 10629E (UTM XD589204), 10.7 NM SOUTH OF BAN DONG. THIS NEW ACCESS ROAD IS LOCATED 1.3 NM NORTH OF THE ORIGINAL JUNCTION OF THESE TWO ROUTES.



25X1

ALL UTM COORDINATES ARE TAKEN FROM AMS SERIES L7012, SHEETS 6260 I, II, IV AND 6261 III.

These notes have been prepared for briefing purposes only and should not be used for detailed analytical work. Their use should be restricted to the particular briefing board(s) they were prepared for and must be considered valid only for the reporting period as indicated by the date of issue. For information concerning these notes contact Chief, Collateral Support Division, NPIC.

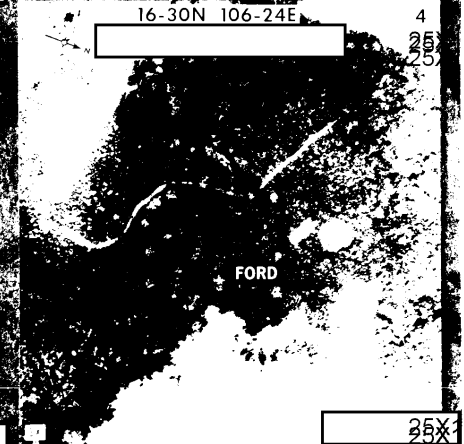
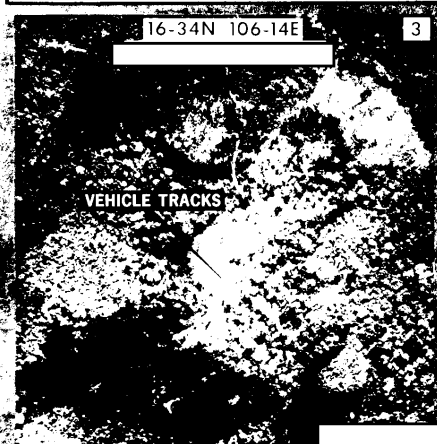
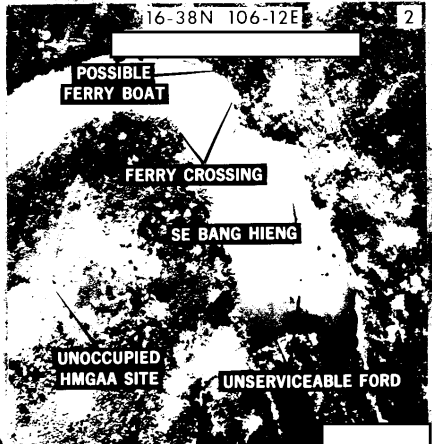
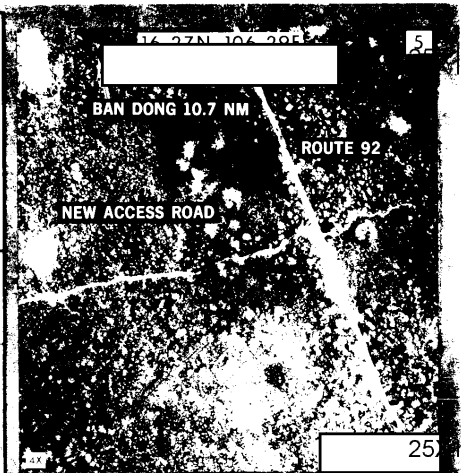
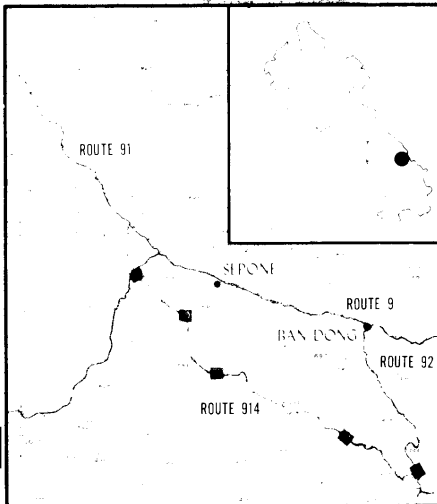
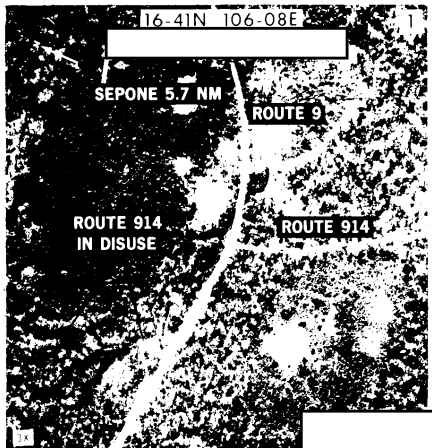
CONFIDENTIAL

CONFIDENTIAL

NATIONAL PHOTOGRAPHIC INTERPRETATION CENTER



ROUTE 914 PANHANDLE AREA, LAOS



25X