

25X1

CONFIDENTIAL

K-7883
TROJAN HORSE

NPIC/CSD-207/66
5 APRIL 1966
PAGE 2 OF 5

25X1

25X1

TRUCK PARK AND STORAGE AREA
ROUTE 92 ALTERNATE, LAOS
1550N 10644E

1. SIGNIFICANCE:

THIS BRIEFING BOARD DEPICTS A LARGE AREA CONTAINING A TRUCK PARK AND PROBABLE STORAGE AREA.

2. LOCATION:

THE FACILITIES ARE LOCATED ALONG ALTERNATE ROUTE 92 IN THE VICINITY OF BAN BAC WHICH IS LOCATED IN THE SOUTHERN LAOTIAN PANHANDLE, APPROXIMATELY TWENTY-EIGHT NM NORTHWEST OF SARAVANE.

3. MISSION READOUT:

TROJAN HORSE [REDACTED] REVEALS THE FOLLOWING FACILITIES ON LAOS ROUTE 92 ALTERNATE:

25X1

A. A TRUCK PARK IS LOCATED AT 1550N 10644E (UTM XC873525). A NEW ROAD EXTENDS EAST INTO THE AREA FROM ROUTE 92 AT UTM XC862528 TO A VEHICLE PARKING LOOP AT UTM XC873525, WHICH CONTAINS AT LEAST FOUR PARKING SLOTS. TWO ACCESS ROADS EXTEND GENERALLY SOUTH-SOUTHEAST FROM THIS AREA AND REJOIN ROUTE 92 ALTERNATE AT UTMS XC874517 AND XC875520. ROW CROPS ARE OBSERVED IMMEDIATELY NORTH OF ROUTE 92 ALTERNATE AT UTM XC878523.

B. A PROBABLE STORAGE AREA IS LOCATED NORTH OF ROUTE 92 ALTERNATE AT 1551N 10644E (UTM XC857534). A LOOP ROAD IS OBSERVED TO FOLLOW THE

GROUP 1
Excluded from automatic
downgrading and
declassification

These notes have been prepared for briefing purposes only and should not be used for detailed analytical work. Their use should be restricted to the particular briefing board(s) they were prepared for and must be considered valid only for the reporting period as indicated by the date of issue.

CONFIDENTIAL

25X1

25X1

CONFIDENTIAL

25X1

K-7883
TROJAN HORSE

NPIC/CSD-207/66
5 APRIL 1966
PAGE 3 OF 5

25X1

25X1

PERIMETER OF A HEAVILY WOODED AREA, FROM WHICH A SHORT ACCESS ROAD
EXTENDS NORTH TO PROBABLE CAVE STORAGE AT UTM XC859535.

TROJAN HORSE

25X1

ALL UTM COORDINATES ARE TAKEN FROM AMS SERIES L7012, SHEETS 6358 I, IV.

CONFIDENTIAL

25X1

25X1

These notes have been prepared for briefing purposes only and should not be used for detailed analytical work. Their use should be restricted to the particular briefing board(s) they were prepared for and must be considered valid only for the reporting period as indicated by the date of issue.

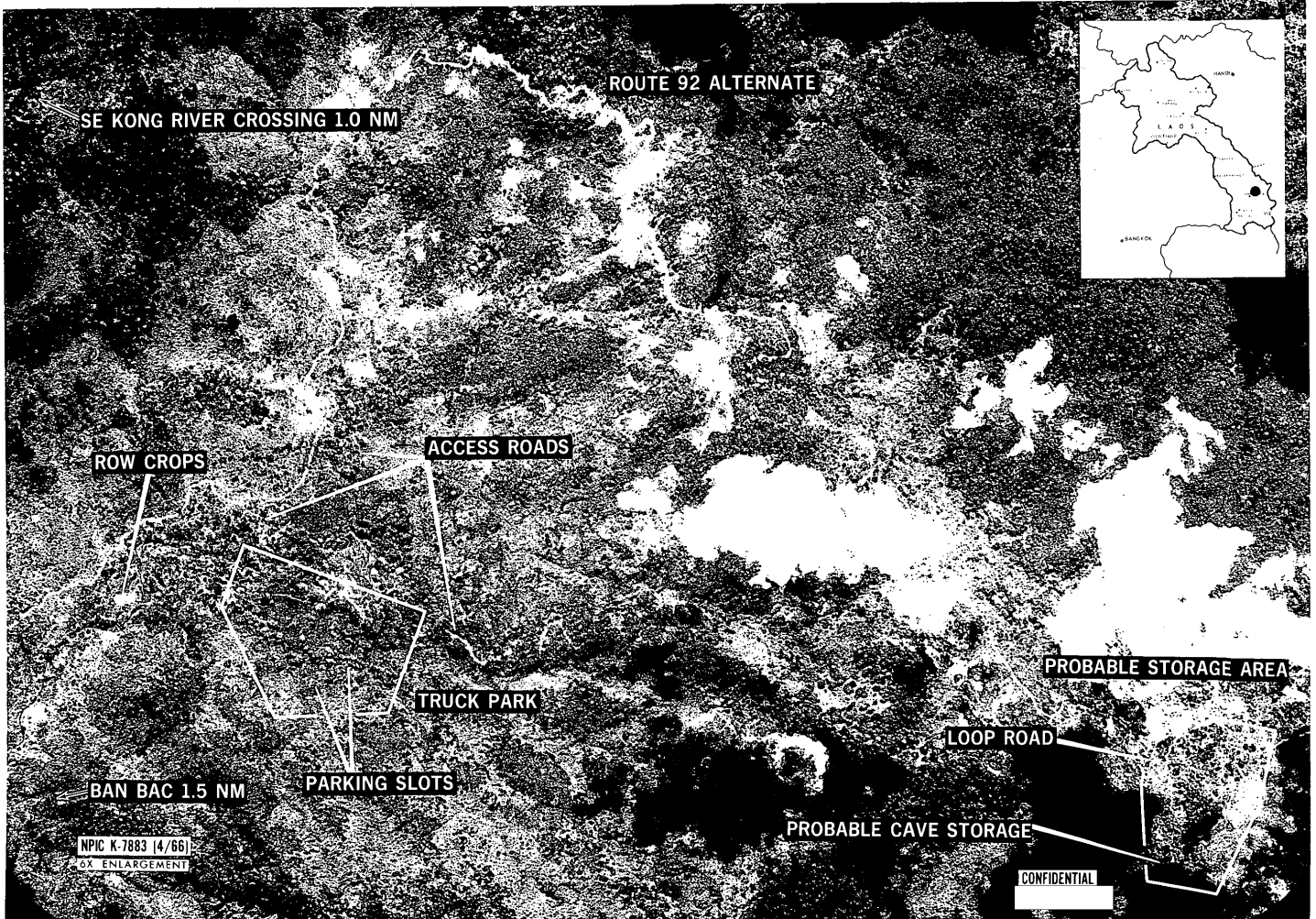
CONFIDENTIAL



TRUCK PARK AND PROBABLE STORAGE AREA ROUTE 92 ALTERNATE, LAOS 15-50N 106-44E



25X1
25X1



NPIC K-7883 (4/66)
6X ENLARGEMENT

CONFIDENTIAL

25X1

Approved For Release 2007/11/26 : CIA-RDP80T01471R001600120021-0

Proj 11525 - G
Cont # 210121
Ser # 66-I-1435 M

REPRODUCTION OF THIS DOCUMENT IN
WHOLE OR IN PART IS PROHIBITED
EXCEPT WITH THE PERMISSION OF THE
OFFICE OF ORIGIN.

Approved For Release 2007/11/26 : CIA-RDP80T01471R001600120021-0