

TOP SECRET

K-0268

TROJAN HORSE

28 APRIL 1965  
PAGE 3

25X1  
25X1

CONSTRUCTION ACTIVITY  
HAIPHONG/CAT BI AIRFIELD, NORTH VIETNAM  
2049N 10643E

1. COLLATERAL REPORTS HAIPHONG/CAT BI AIRFIELD, LOCATED 3.5 NM SOUTHEAST OF HAIPHONG, WAS BUILT BY THE FRENCH IN 1939 AND DEVELOPED AND USED BY THE JAPANESE IN WORLD WAR II. AIRFIELD WAS REHABILITATED BY THE FRENCH IN THE EARLY 1950'S AND WAS THE PRINCIPAL FRENCH AIR FORCE BASE IN NORTH VIETNAM. HOWEVER, MOST OF THE FACILITIES WERE DISMANTLED BY THE FRENCH AIR FORCE BEFORE THEIR WITHDRAWAL IN MAY 1955. HAIPHONG/CAT BI AIRFIELD, PLUS OTHERS IN THE HAIPHONG/HANOI AREA ARE BELIEVED TO HAVE BEEN USED BY THE SOVIETS IN THEIR AIRLIFT OF MILITARY MATERIEL IN SUPPORT OF REBEL FORCES IN LAOS.

2. [REDACTED] REVEALS A 7,700 X 190 FT. ENE/WSW CONCRETE/ASPHALT SERVICEABLE RUNWAY, AND A PARALLEL TAXIWAY WITH TWO END-CONNECTING AND THREE CROSSOVER LINKS. A PARKING APRON IS LOCATED NORTH OF THE RUNWAY; FORMER NNW/SSE CONCRETE RUNWAY NOW PROBABLY BEING USED AS A PARKING APRON. FACILITIES INCLUDE TWO LARGE HANGARS, ONE SMALL HANGAR, A CONTROL/OPERATIONS BUILDING, APPROXIMATELY FORTY ASSOCIATED SUPPORT/MAINTENANCE BUILDINGS, AND AT LEAST TWENTY-FIVE AIRCRAFT REVEITEMENTS. AIRCRAFT OBSERVED -- 6 COLT, 3 PROBABLE MAX, ONE PROBABLE MOOSE, AND 2 HOUND.

25X1

3. TROJAN HORSE [REDACTED] REVEALS THE ADDITION OF A POL STORAGE AREA AND EIGHT NEWLY-CONSTRUCTED AIRCRAFT REVEITEMENTS.

25X1

These notes have been prepared for briefing purposes only and should not be used for detailed analytical work. Their use should be restricted to the particular briefing board(s) they were prepared for and must be considered valid only for the reporting period as indicated by the date of issue.

25X1

TOP SECRET

TOP SECRET

K-0268

28 APRIL 1965

PAGE 4

THESE REVEITEMENTS, LOCATED AT THE WEST END OF THE RUNWAY, ARE APPROXIMATELY [ ] WIDE AND 40 FT. LONG AND ARE OBSERVED TO HAVE THE SLIT CONFIGURATION FOR EXHAUST VENTS/PERSONNEL EXIT PURPOSES. AIRCRAFT OBSERVED -- 2 COLT, 9 PROBABLE MAX, 5 PROBABLE MOOSE, AND ONE U/I STRAIGHT-WING.

25X1

4. AREA HAS BEEN PREVIOUSLY COVERED BY TALENT, [ ] LUCKY DRAGON, AND TROJAN HORSE PHOTOGRAPHY.

25X1

These notes have been prepared for briefing purposes only and should not be used for detailed analytical work. Their use should be restricted to the particular briefing board(s) they were prepared for and must be considered valid only for the reporting period as indicated by the date of issue.

25X1

TOP SECRET

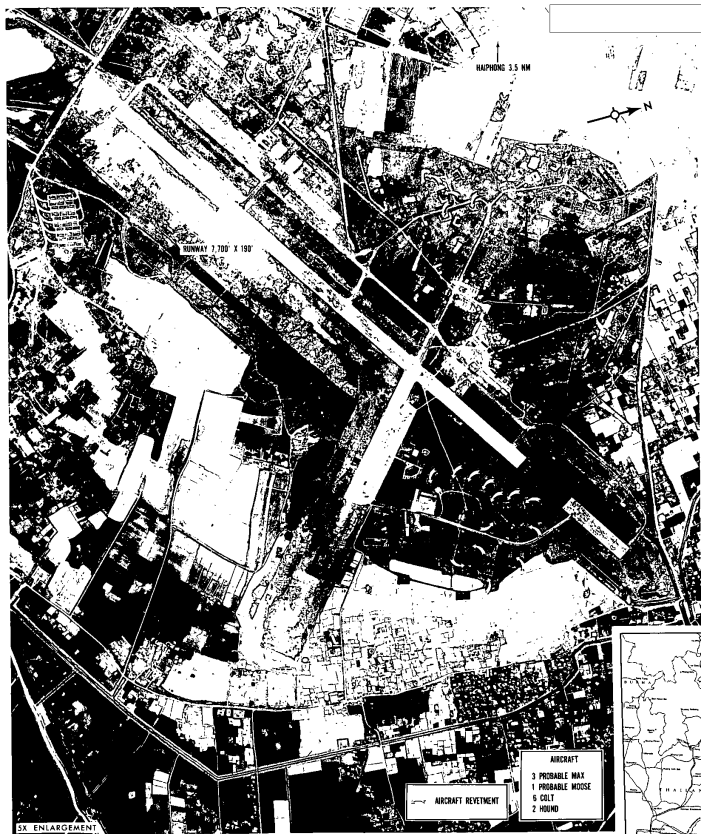
W

SECRET

NATIONAL PHOTOGRAPHIC INTERPRETATION CENTER

25X1

### CONSTRUCTION ACTIVITY HAIPHONG/CAT BI AIRFIELD, NORTH VIETNAM 20-49N 106-43E



25X1

SECRET

25X1

**Page Denied**