

INFORMATION REPORT INFORMATION REPORT

CENTRAL INTELLIGENCE AGENCY

50X1-HUM

This material contains information affecting the National Defense of the United States within the meaning of the Espionage Laws, Title 18, U.S.C. Secs. 793 and 794, the transmission or revelation of which in any manner to an unauthorized person is prohibited by law.

C-O-N-F-I-D-E-N-T-I-A-L

COUNTRY USSR (Leningrad Oblast)

REPORT

SUBJECT Photographs and Observations in the Baltic Sea and at Leningrad, Including Two Submarine Hulls at the Baltic Shipyard

DATE DISTR. 6 April 1962

NO. PAGES 2

DATE OF INFO.

50X1-HUM

PLACE & DATE ACQ.

50X1-HUM

THIS IS UNEVALUATED INFORMATION. SOURCE GRADINGS ARE DEFINITIVE. APPRAISAL OF CONTENT IS TENTATIVE.

1. [redacted] observed two KRUPNYY-class guided missile destroyers [redacted] southbound in the Baltic Sea at the approximate position N 59-10, E 22-00. [redacted]

2. [redacted] about 33 miles south of the point where the two above-mentioned destroyers were sighted, [redacted] a drifting mine [redacted]

50X1-HUM

3. [redacted]

4. The two photographs [redacted] mentioned in paragraph 1 above, [redacted] and the following 17 photographs [redacted] taken from the Customs Quay at Leningrad [redacted]

The photographs include a six-part panorama of two probable W-class submarine hulls on transverse launching ways at the south side of the Baltic Shipyard and a ten-part panorama of the south side of Ostrov Vasilyevskiy from the Grebnoy Port boat basin to the Admiralty Shipyard. The descriptions on page 2 are keyed to numbers and letters marked on the photographs.

C-O-N-F-I-D-E-N-T-I-A-L

50X1-HUM

STATE	X	ARMY	X	NAVY	#X	AIR	X	NSA	X	OCR	X	NIC	X	DIA	X
-------	---	------	---	------	----	-----	---	-----	---	-----	---	-----	---	-----	---

(Note: Washington distribution indicated by "X"; Field distribution by "#").

INFORMATION REPORT INFORMATION REPORT

C-O-N-F-I-D-E-N-T-I-A-L

-2-

50X1-HUM

Subject

Grebnoy Seaplane Base. Hangar (c) and MADGE seaplanes (d) on shore.

Six-part panorama. Two probable W-class submarine hulls on transverse launching ways at the south side of the Baltic Shipyard.

Part one of ten-part panorama. Entrance (a) to Grebnoy Port basin.

Part two of ten-part panorama. Grebnoy Seaplane Base (b); hangar (c); MADGE seaplanes (d).

Part three of ten-part panorama. Sevkabel Telephone Cable Plant, at right.

Part four of ten-part panorama. Sevkabel Telephone Cable Plant; Slutskaya Textile Plant, at right.

Part five of ten-part panorama. Slutskaya Textile Plant with heat and power plant GRES TETS 7, behind it.

50X1-HUM

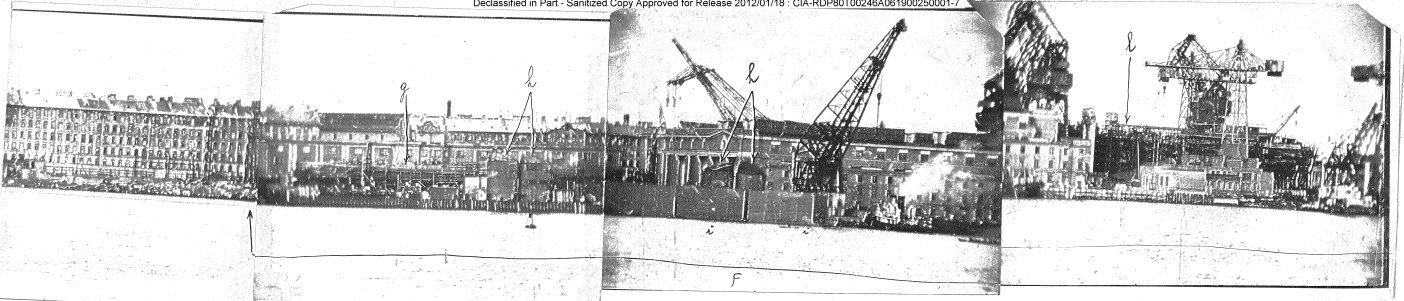
Parts six and seven of ten-part panorama. Radishchev Leather Plant.

Part eight of ten-part panorama. Two probable W-class submarine hulls (g) on transverse launching ways at the south side of the Baltic Shipyard; cruiser stacks (h).

Part nine of ten-part panorama. South side of Baltic Shipyard (f); cruiser stacks (h); wood and fabric screens (i); cargo vessel under construction (l).

Part ten of ten-part panorama. Baltic Shipyard with Admiralty Shipyard in right background. Two new vessels (m) being fitted out at Admiralty Shipyard.

C-O-N-F-I-D-E-N-T-I-A-L
NOFORN/CONTINUED CONTROL



USSR 59 55 N 30 15 E
SHEPARD AT RIGHT BACKGROUND. (M) TWO NEW VESSELS
SHEPARD. PT 10 OF 10 PT PAN.

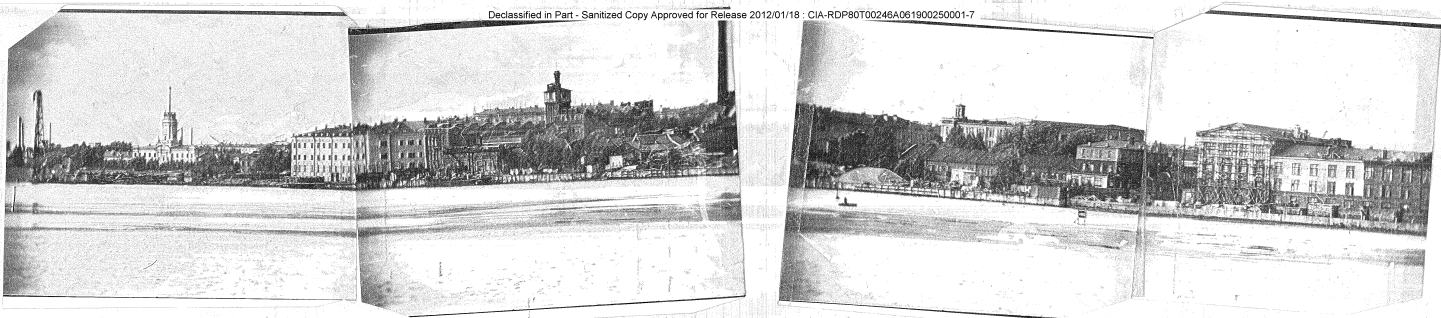
USSR 59 55 N 30 15 E
SHEPARD. (M) CRUISER STACKS, (L) WOOD AND FABRIC SCREENS. (R) SOUTH SIDE OF
SHEPARD. (M) CRUISER STACKS UNDER CONSTRUCTION. PT 9 OF 10 PT PAN.

CONFIDENTIAL

USSR 59 55 N 30 15 E
SHEPARD. (M) CRUISER STACKS, (L) WOOD AND FABRIC SCREENS. (R) SOUTH SIDE OF
SHEPARD. (M) CRUISER STACKS UNDER CONSTRUCTION. PT 9 OF 10 PT PAN.

50X1-HUM
50X1-HUM
50X1-HUM
50X1-HUM
50X1-HUM

Declassified in Part - Sanitized Copy Approved for Release 2012/01/18 : CIA-RDP80T00246A061900250001-7



Declassified in Part - Sanitized Copy Approved for Release 2012/01/18 : CIA-RDP80T00246A061900250001-7

CONFIDENTIAL

CONFIDENTIAL

CONFIDENTIAL

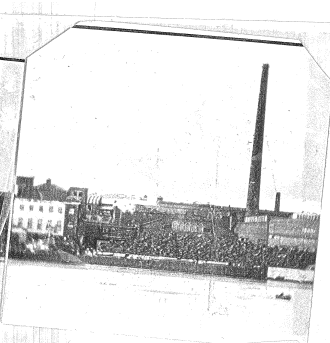
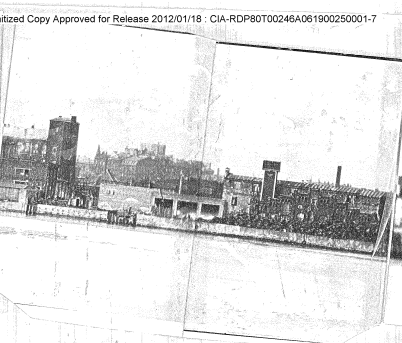
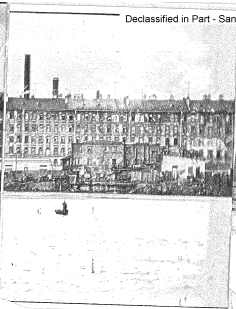
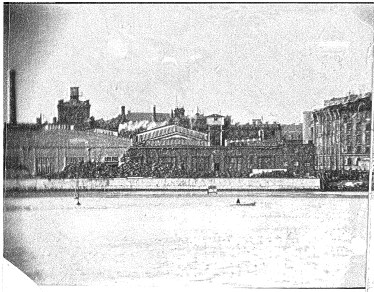
CONFIDENTIAL

USSR MAG 153B LENINGRAD 59 55 N 30 15 E
SEVKADEL TELEPHONE CABLE PLANT. SLUTSKAYA TEXTILE PLANT AT RIGHT. FROM CUSTOMS
QUAY. Pt 2 of 10 pt PAN.

USSR MAG 153B LENINGRAD 59 55 N 30 15 E
SEVKADEL TELEPHONE CABLE PLANT AT RIGHT. FROM CUSTOMS QUAY. Pt 3 of 10 pt PAN.

50X1-HUM
50X1-HUM
50X1-HUM
50X1-HUM
50X1-HUM
50X1-HUM
50X1-HUM

Declassified in Part - Sanitized Copy Approved for Release 2012/01/18 : CIA-RDP80T00246A061900250001-7



Declassified in Part - Sanitized Copy Approved for Release 2012/01/18 : CIA-RDP80T00246A061900250001-7

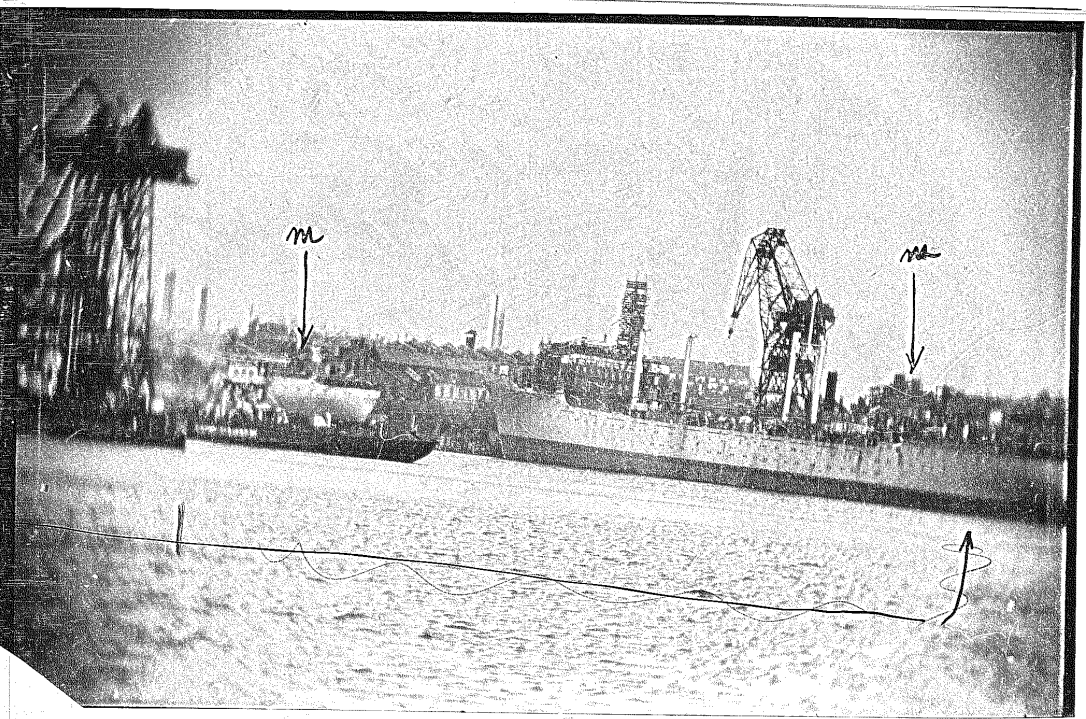
CONFIDENTIAL

USSR, MIC 1558 Leningrad, 59 55 N 30 15 E
/ 7ABISHOV LEATHER PLANTS / FROM CUSTOMS QUAY. Pt 6 of 10 pt PAN.

CONFIDENTIAL

USSR, MIC 1558 Leningrad, 59 55 N 30 15 E
/ 7ABISHOV LEATHER PLANTS / FROM CUSTOMS QUAY. Pt 7 of 10 pt PAN.

50X1-HUM
50X1-HUM
50X1-HUM
50X1-HUM



[REDACTED]

50X1-HUM

USSR WAG 153B LENINGRAD 59 55 N 30 15 E
BAL TIC SHIPYARD. SOUTH SIDE: TWO PROBABLE W-CLASS SUBMARINE HULLS ON TRANSVERSE
LAUCHING WAYS. PT 5 OF 6 PT PAN.

50X1-HUM

9

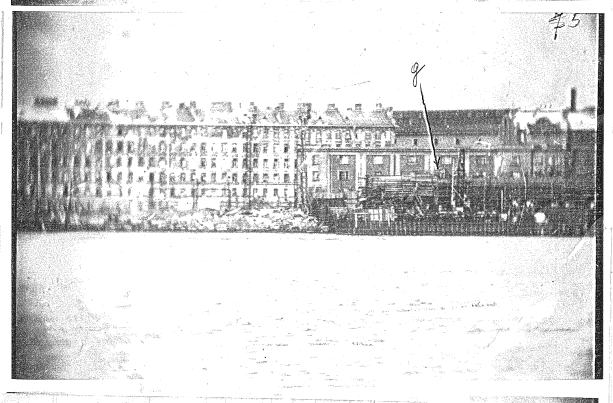
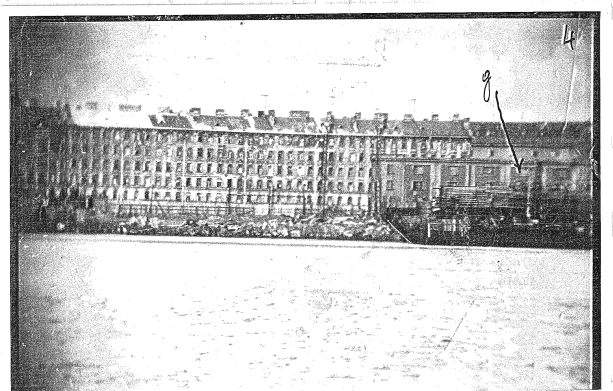
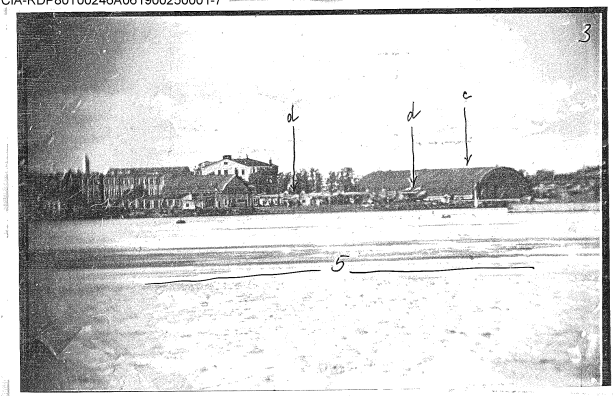
CONFIDENTIAL

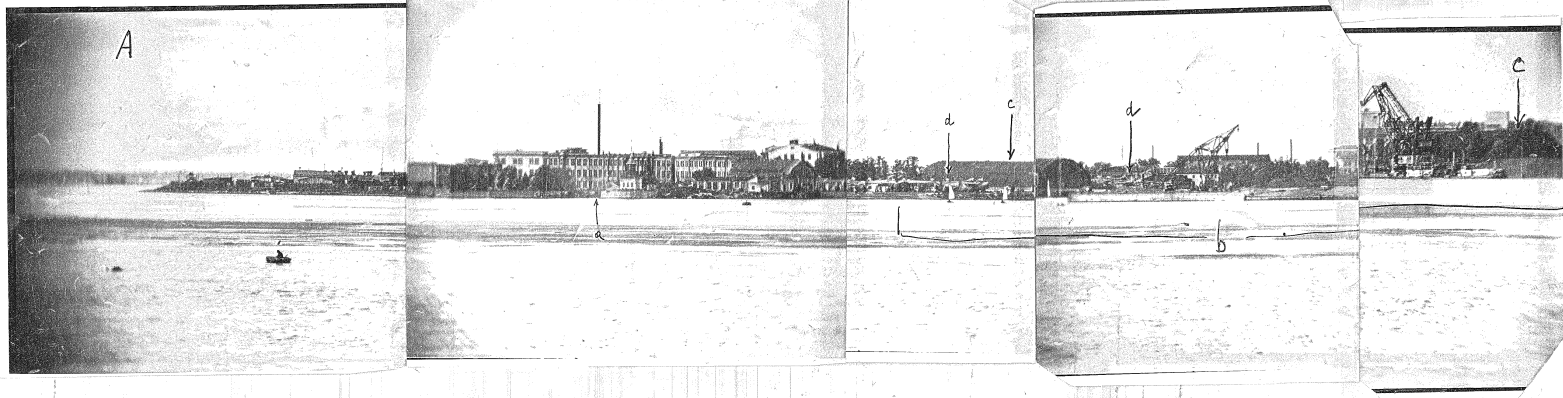
[REDACTED]

50X1-HUM

[REDACTED]

9



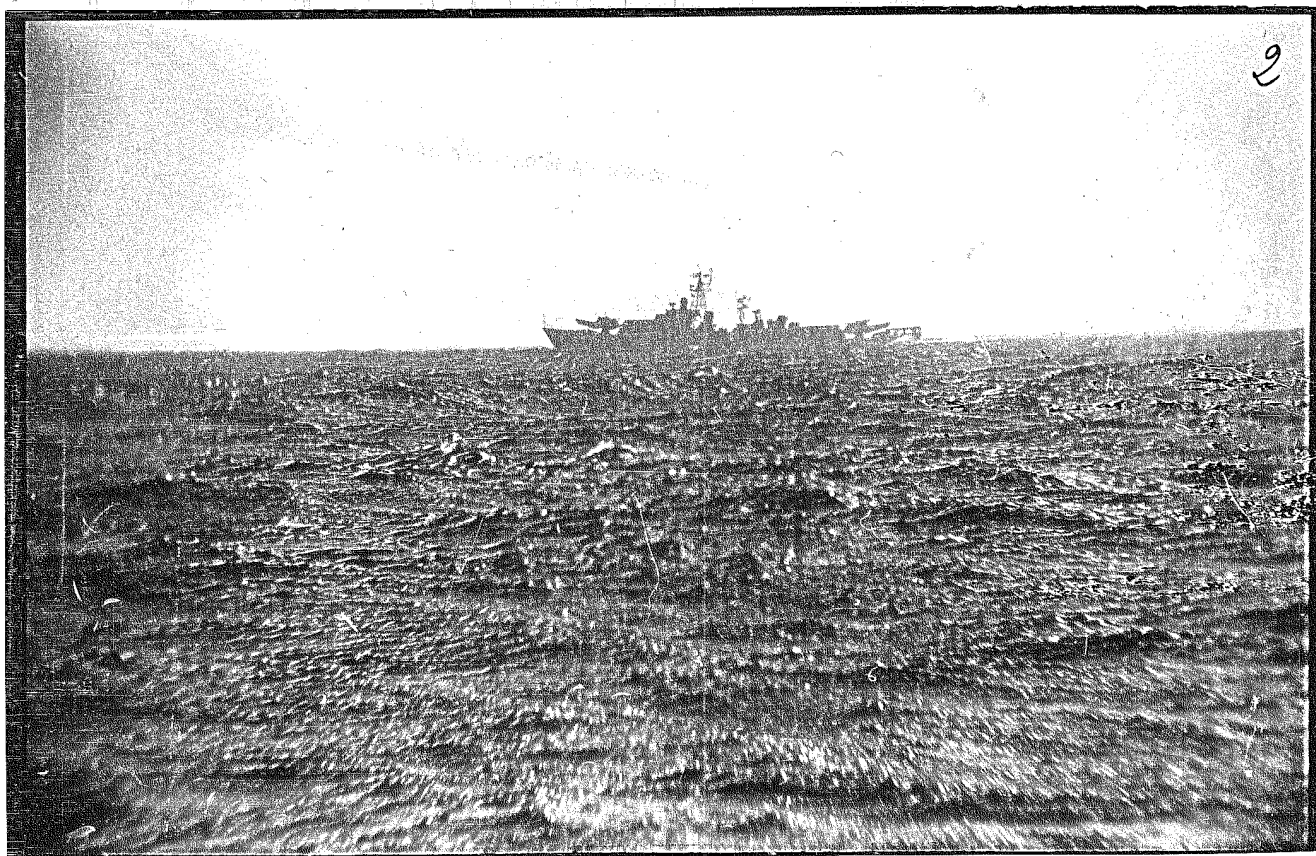
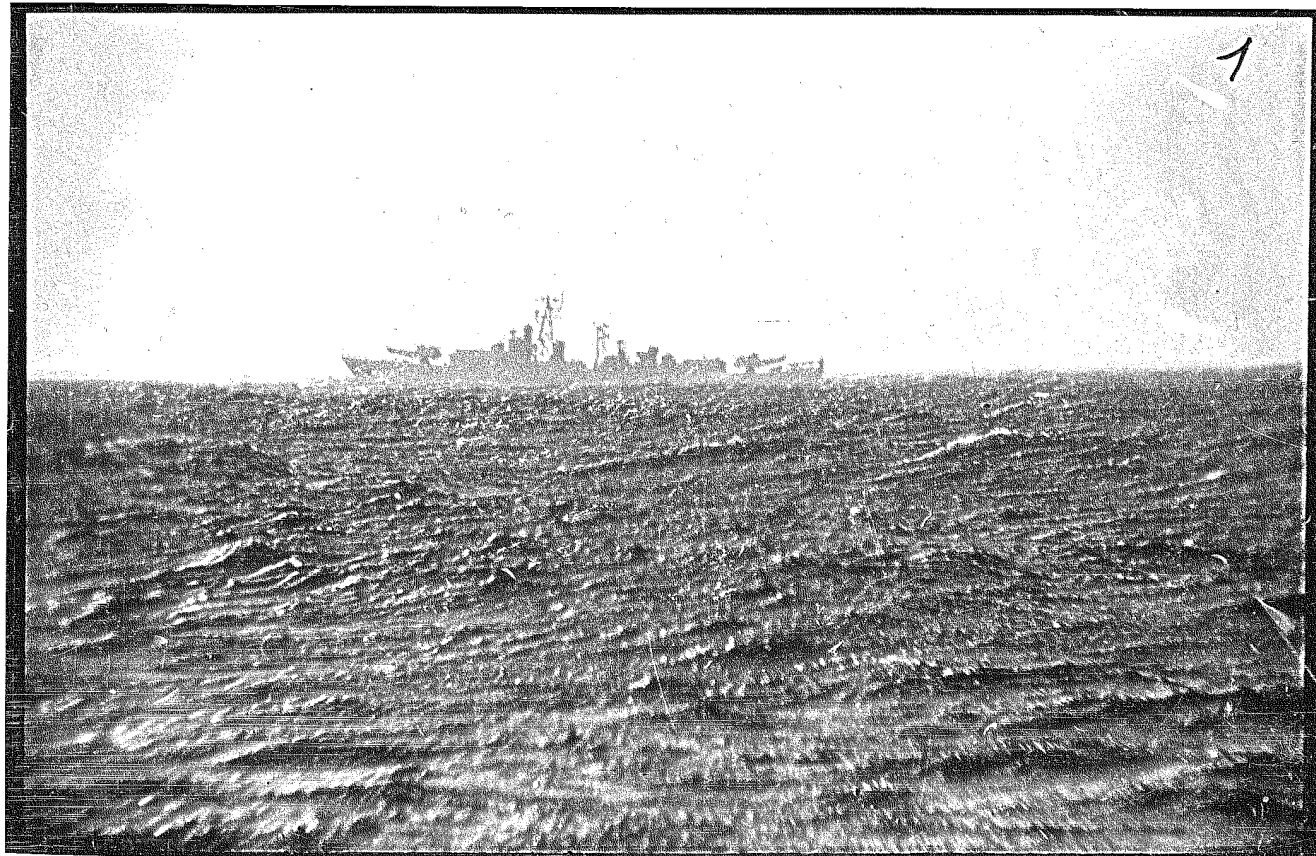


USSR / MAC 153B Leningrad 59 55 N 39 15 E
(A) ENTRANCE TO GREBNOY PORT BOAT BASIN. FROM CUSTOMS QUAY. Pt 1 of 10 pt PAN.

USSR / MAC 153B Leningrad 59 55 N 39 15 E
(A) ENTRANCE TO GREBNOY PORT BOAT BASIN. FROM CUSTOMS QUAY. Pt 1 of 10 pt PAN.

50X1-HUM

50X1-HUM

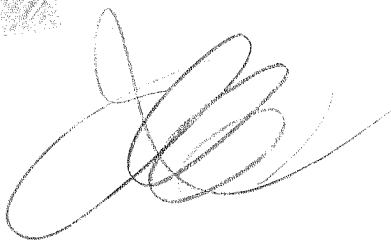


CONFIDENTIAL

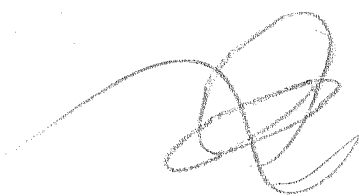
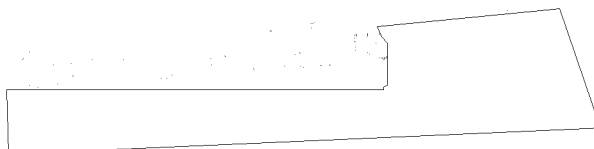
50X1-HUM

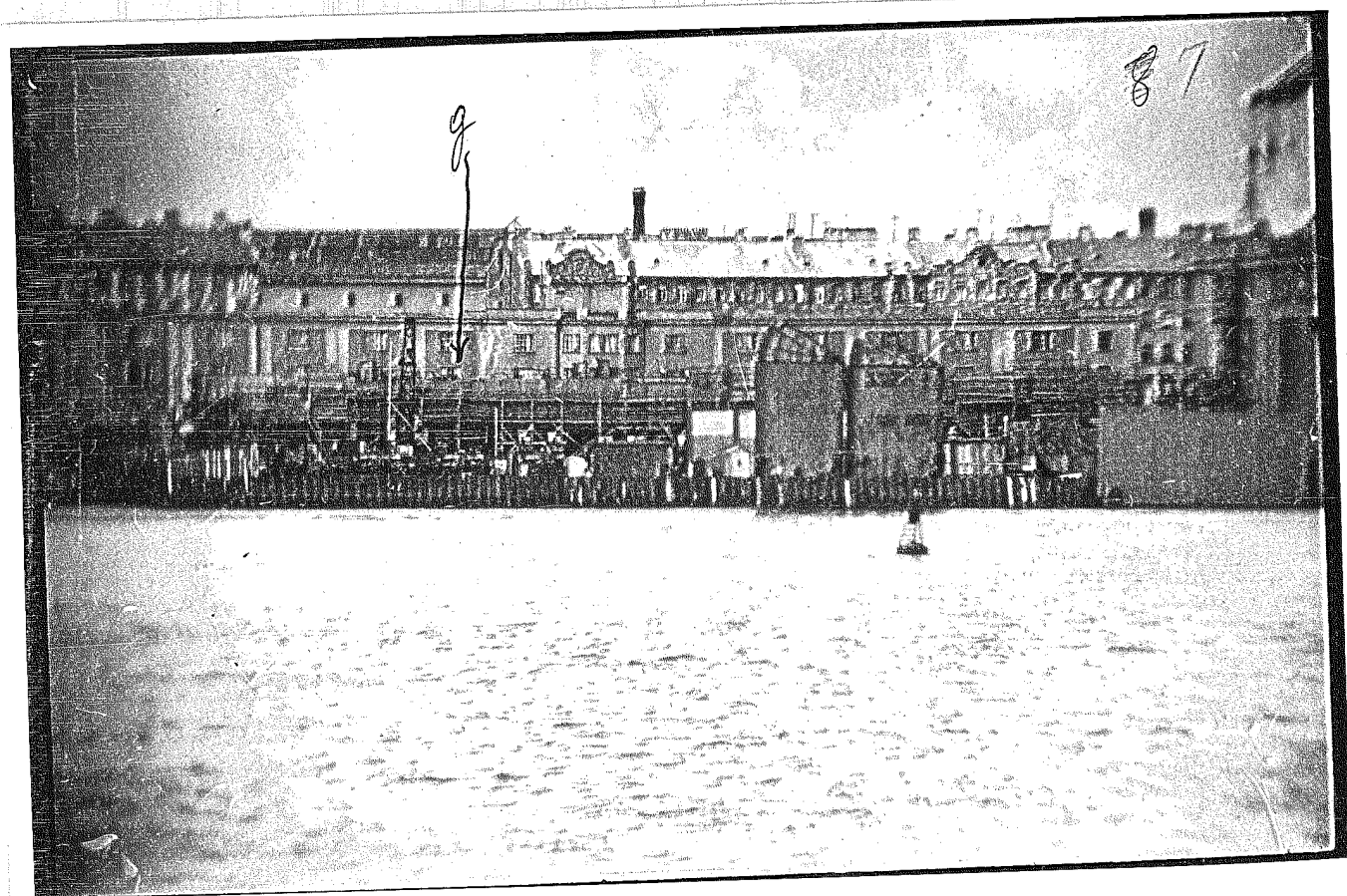
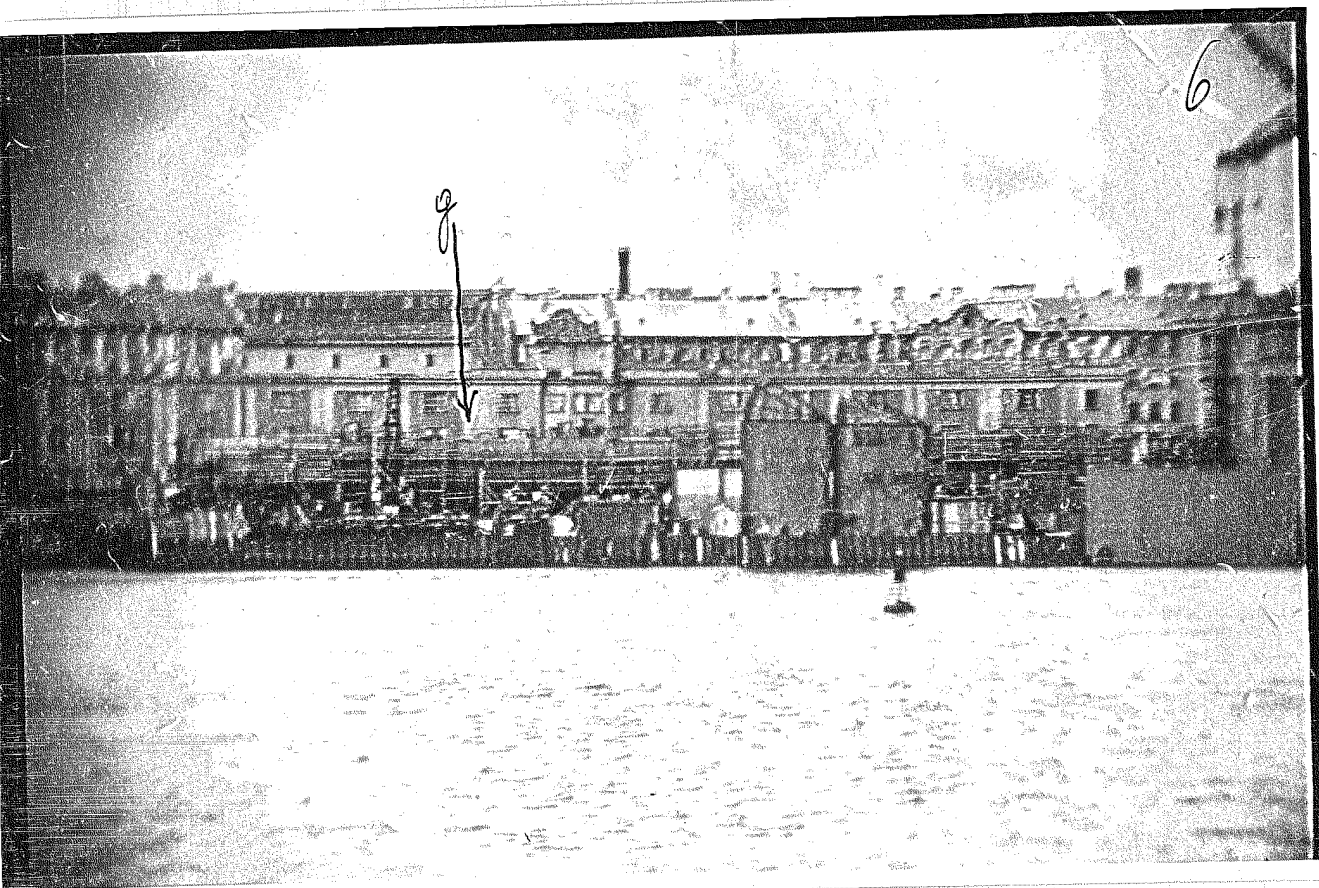
USSR
KRUPNYI-CLASS GUIDED MISSILE DESTROYER SOUTHBOUND IN BALTIC SEA AT ABOUT
59 10 N, 22 00 E.

50X1-HUM



50X1-HUM





CONFIDENTIAL

50X1-HUM

USSR WAC 153B LENINGRAD 59 55 N 30 15 E
BAL TIC SHIPYARD. SOUTH SIDE. TWO PROBABLE W-CLASS SUBMARINE HULLS ON TRANSVERSE
LAUCHING WAYS. PT 3 OF 6 PT PAN.

50X1-HUM

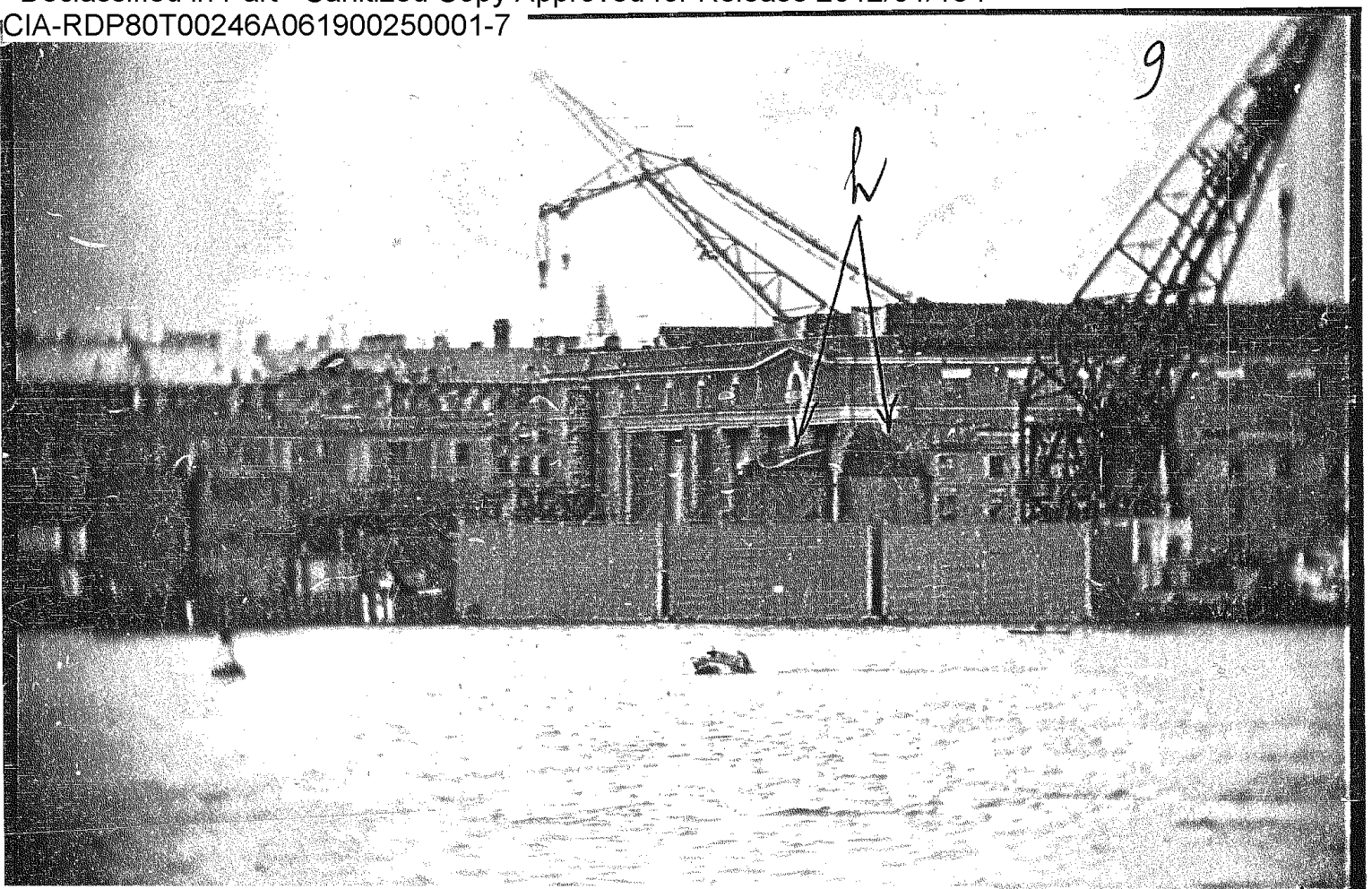
CONFIDENTIAL

50X1-HUM

USSR WAC 153B LENINGRAD 59 55 N 30 15 E
BAL TIC SHIPYARD. SOUTH SIDE. TWO PROBABLE W-CLASS SUBMARINE HULLS ON TRANSVERSE
LAUCHING WAYS. PT 4 OF 6 PT PAN.

50X1-HUM

Declassified in Part - Sanitized Copy Approved for Release 2012/01/18 :
CIA-RDP80T00246A061900250001-7



Declassified in Part - Sanitized Copy Approved for Release 2012/01/18 :
CIA-RDP80T00246A061900250001-7

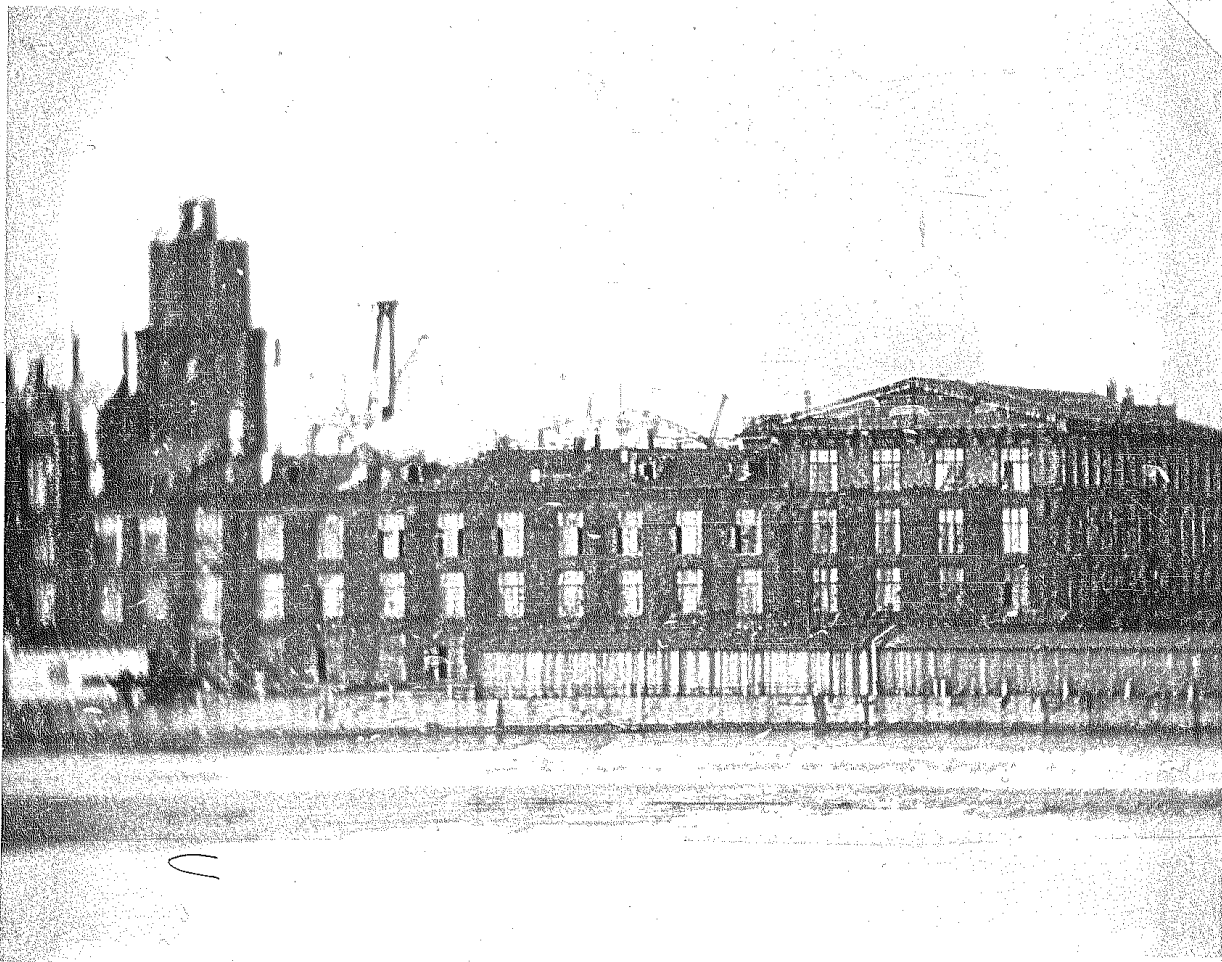
Declassified in Part - Sanitized Copy Approved for Release 2012/01/18 :
CIA-RDP80T00246A061900250001-7

USSR WAC 153B Leningrad 59 55 N 30 15 E
Baltic Shipyard. South Side. Two Probable W-Class Submarine Hulls on Transverse
Launching Ways. Pt 6 of 6 Pt Pan.

50X1-HUM

Declassified in Part - Sanitized Copy Approved for Release 2012/01/18 :
CIA-RDP80T00246A061900250001-7

Declassified in Part - Sanitized Copy Approved for Release 2012/01/18 :
CIA-RDP80T00246A061900250001-7



Declassified in Part - Sanitized Copy Approved for Release 2012/01/18 :
CIA-RDP80T00246A061900250001-7

Declassified in Part - Sanitized Copy Approved for Release 2012/01/18 :
CIA-RDP80T00246A061900250001-7

CONFIDENTIAL

50X1-HUM

USSR WAC 153B Leningrad 59 55 N 30 15 E
SLUTSKAYA TEXTILE PLANT WITH HEAT AND POWER PLANT GRES TETS 7 BEHIND 7 FROM CUSTOMS
QUAY. PT 5 OF 10 PT PAN.

50X1-HUM

Declassified in Part - Sanitized Copy Approved for Release 2012/01/18 :
CIA-RDP80T00246A061900250001-7

