

50X1-HUM

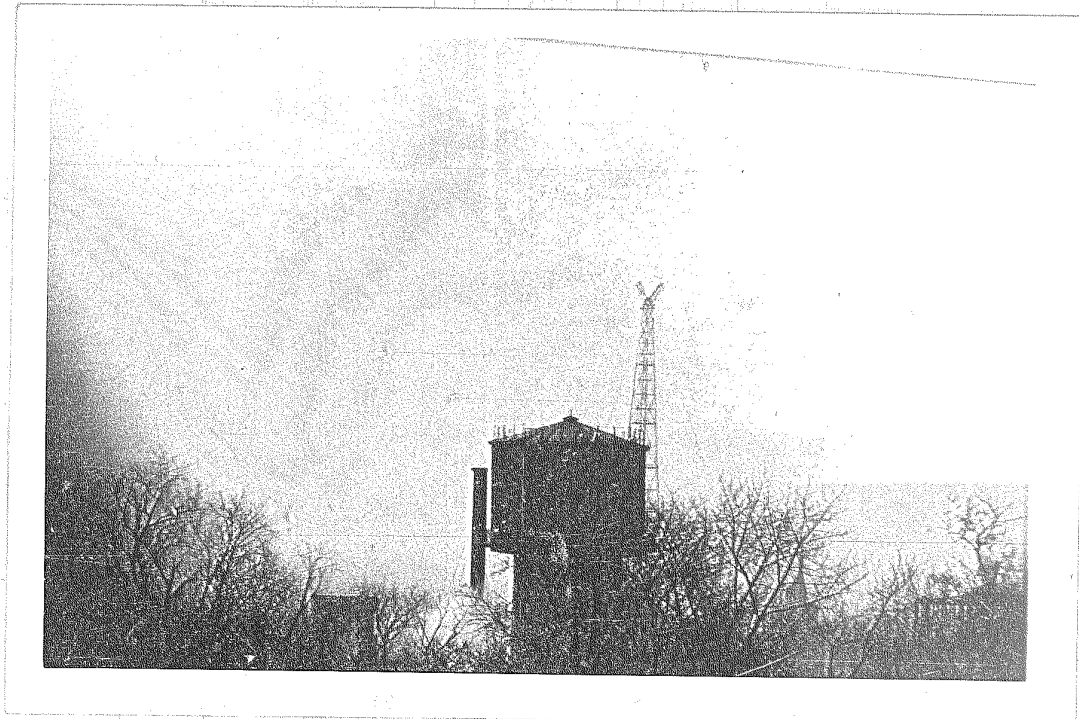
**Page Denied**

Next 1 Page(s) In Document Denied



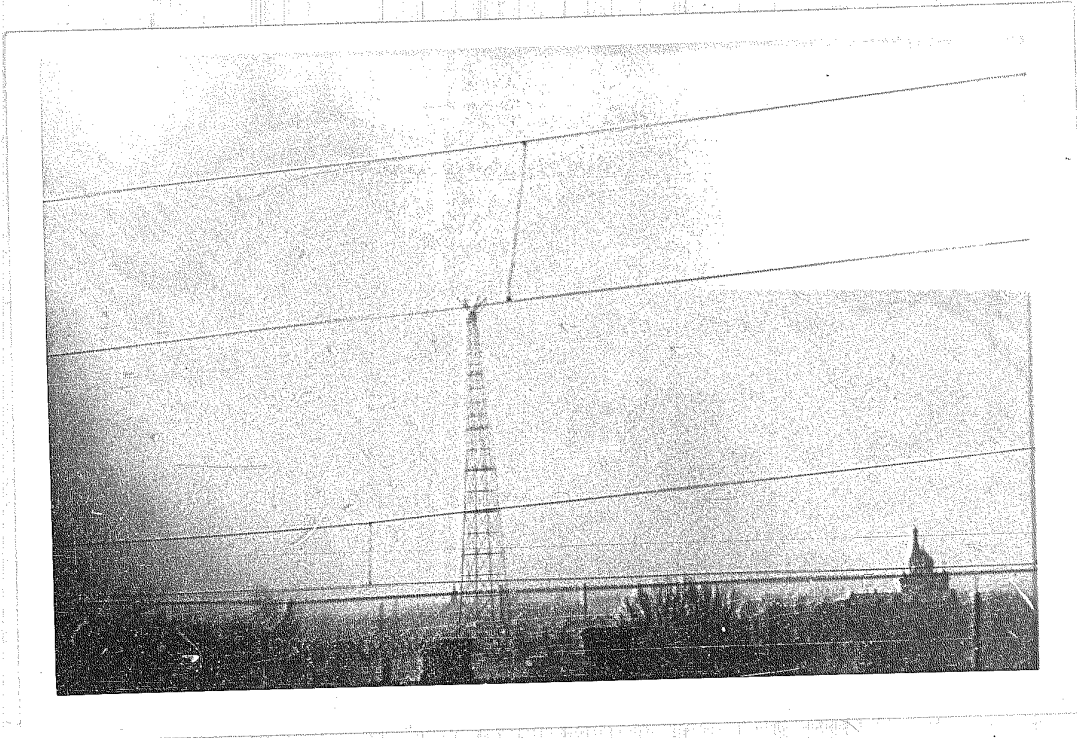
USSR WAC 234D KHARKOV 50 00 N 36 15 E  
/PALM TREE RADIO JAMMING TOWER/

50X1-HUM  
50X1-HUM



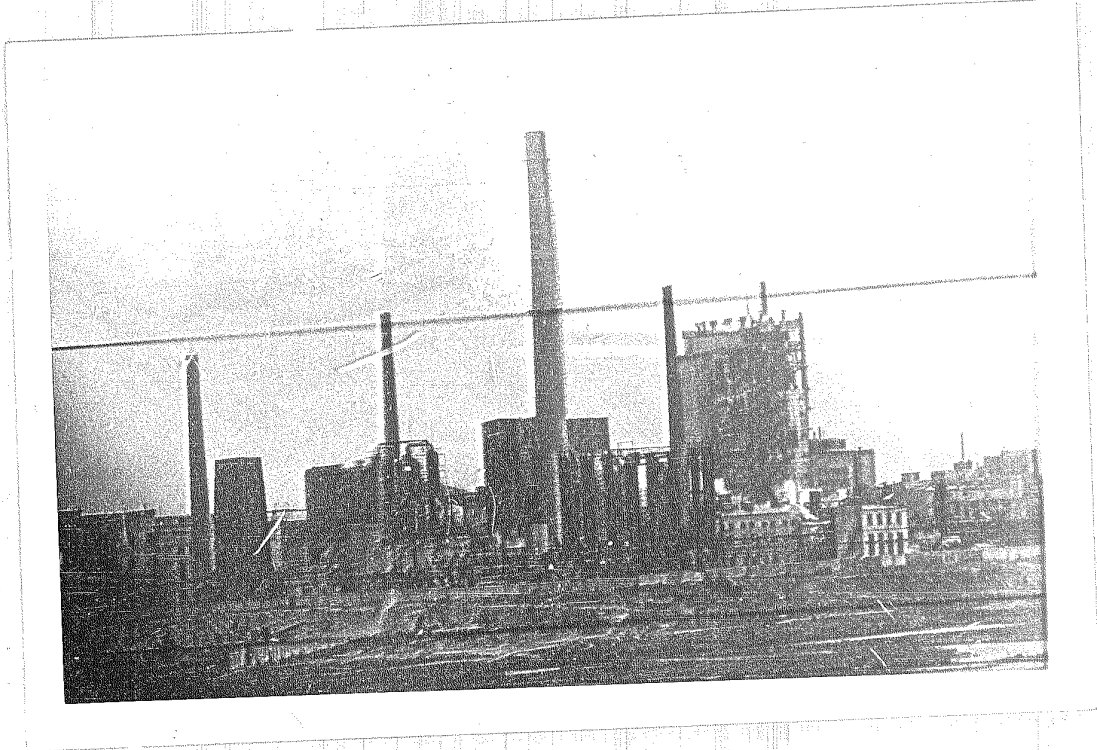
USSR WAC 234D KHARKOV 50 00 N 36 15 E  
/ PALM TREE RADIO JAMMING TOWER /

50X1-HUM



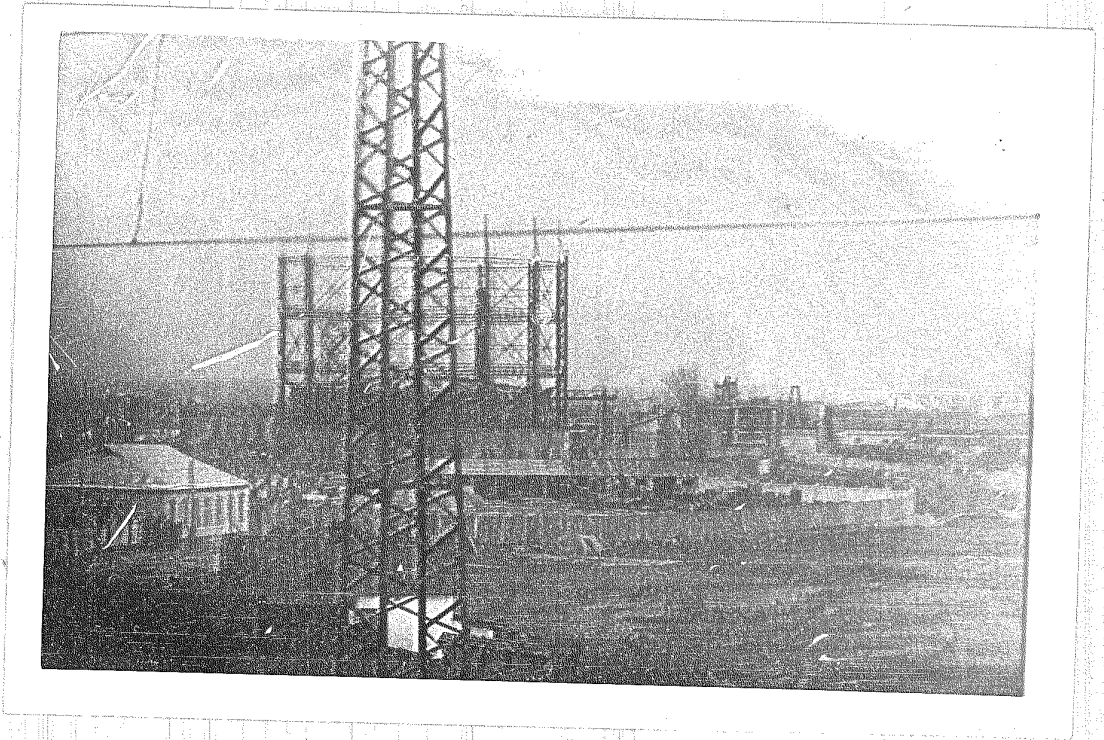
USSR WAC 234D KHARKOV 50 00 N 06 15 E  
/PALM TREE RADIO JAMMING TOWER/

50X1-HUM



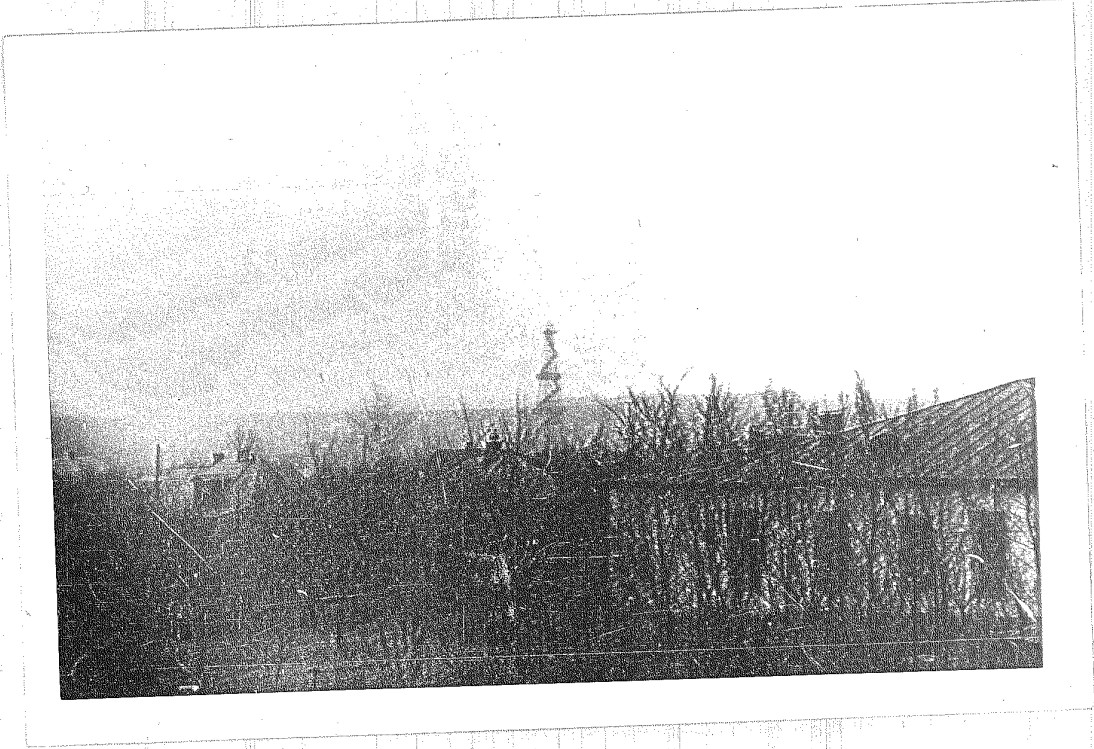
USSR WAC 234D KHARKOV  
RAILROAD SPUR AND FACTORY

50X1-HUM



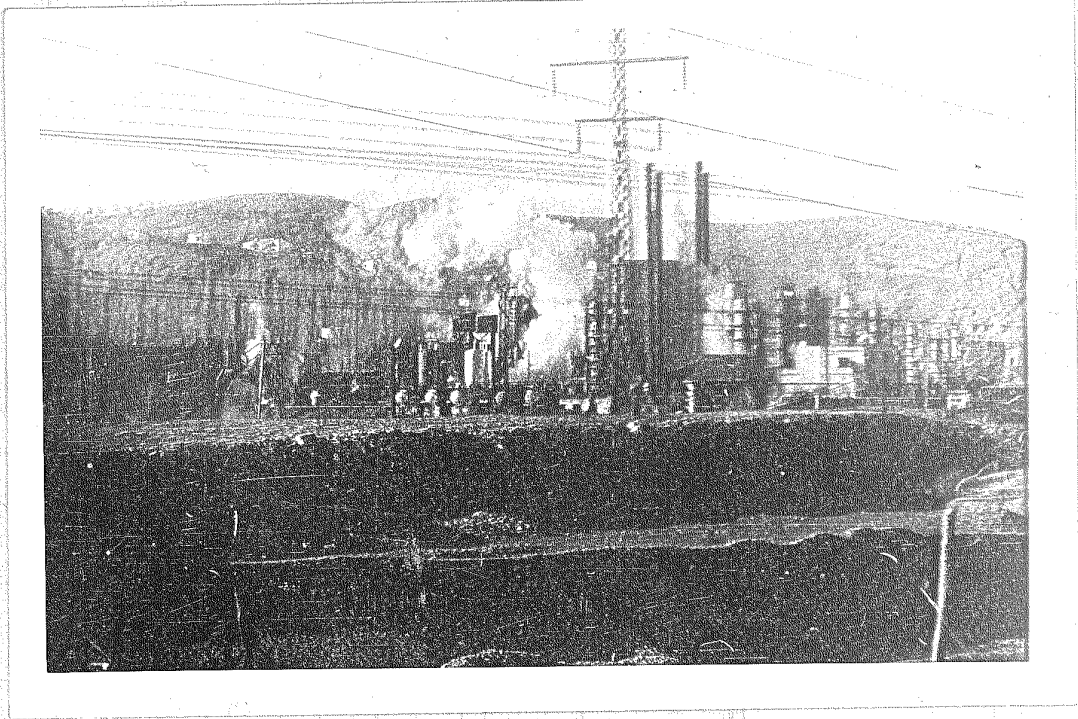
USSR WAC 234D KHARKOV

50X1-HUM



USSR WAC 234D KHARKOV

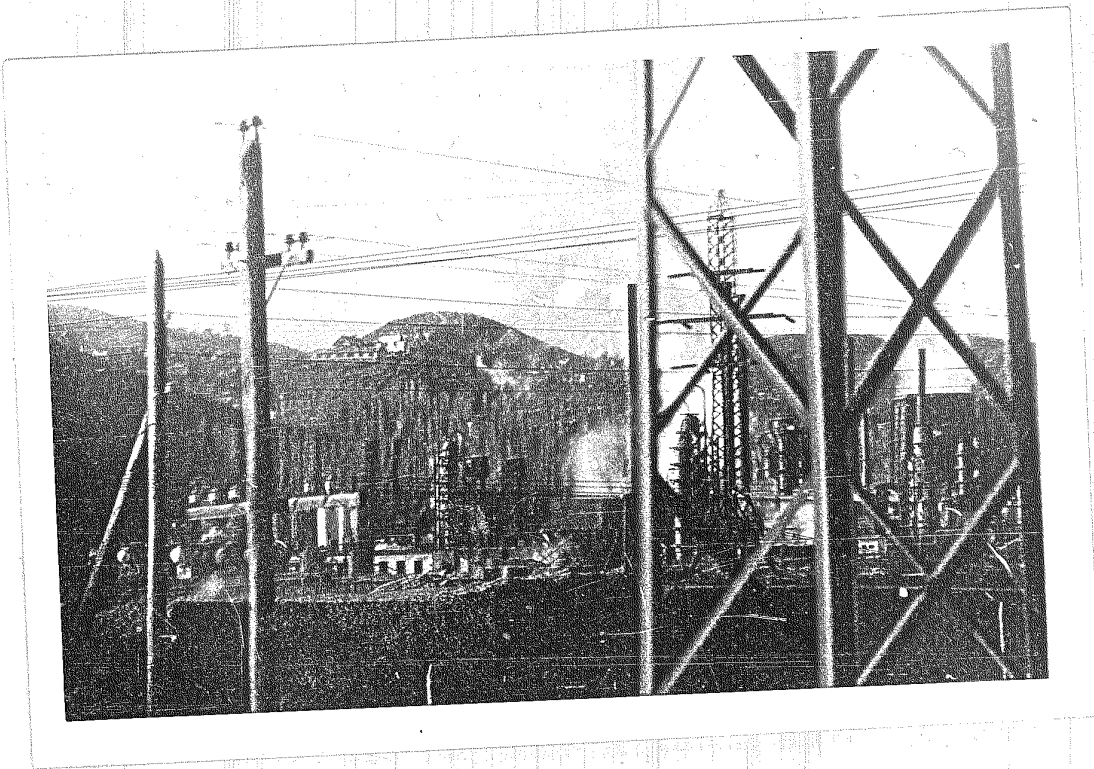
50X1-HUM



USSR WAC 249C TUAPSE 44 05 N 39 06 E  
/ORDZHONIKIDZE OIL REFINERY/

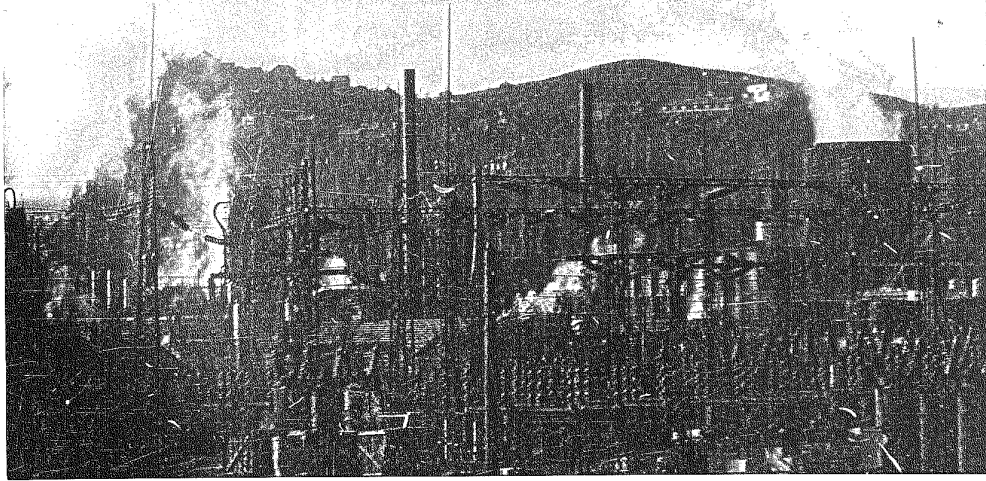
50X1-HUM





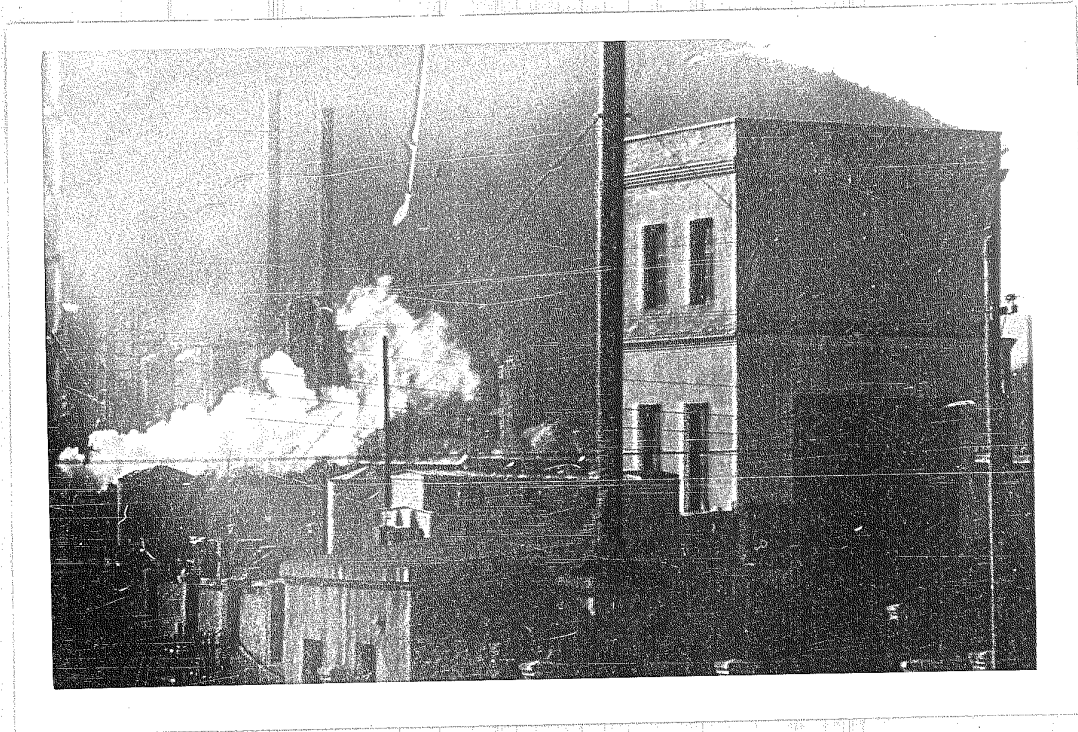
USSR WAC 249C TUAPSE 44 05  
/ORDZHONIKIDZE OIL REFINERY/

50X1-HUM



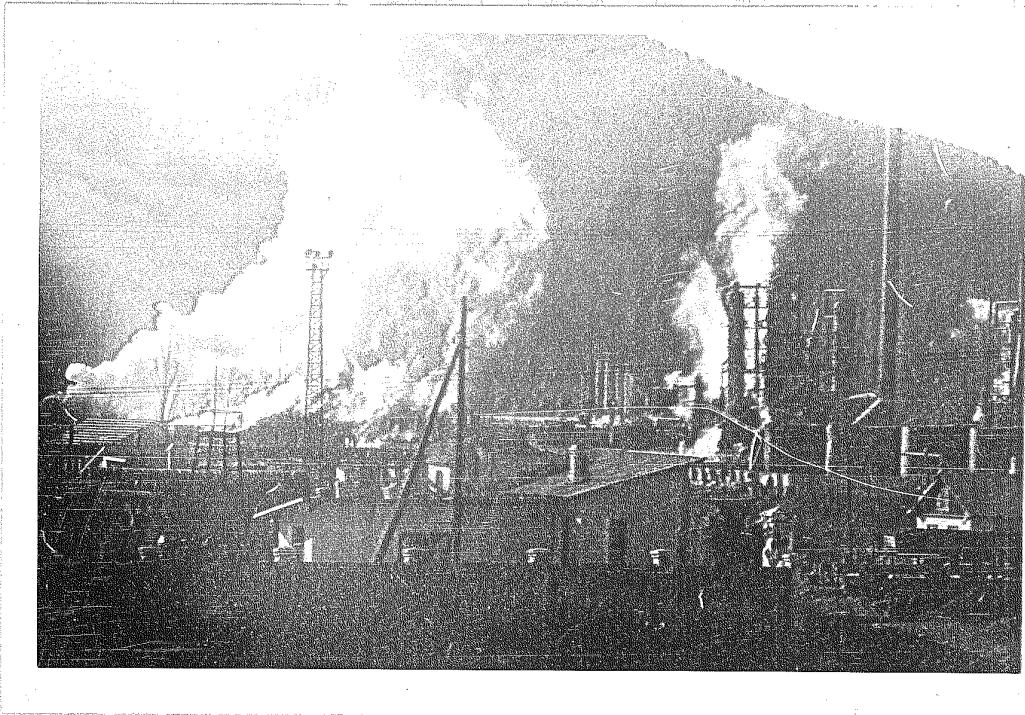
USSR WAC 249C TUAPSE 44 05 N 39 06 E  
/ORDZHONIKIDZE OIL REFINERY/

50X1-HUM



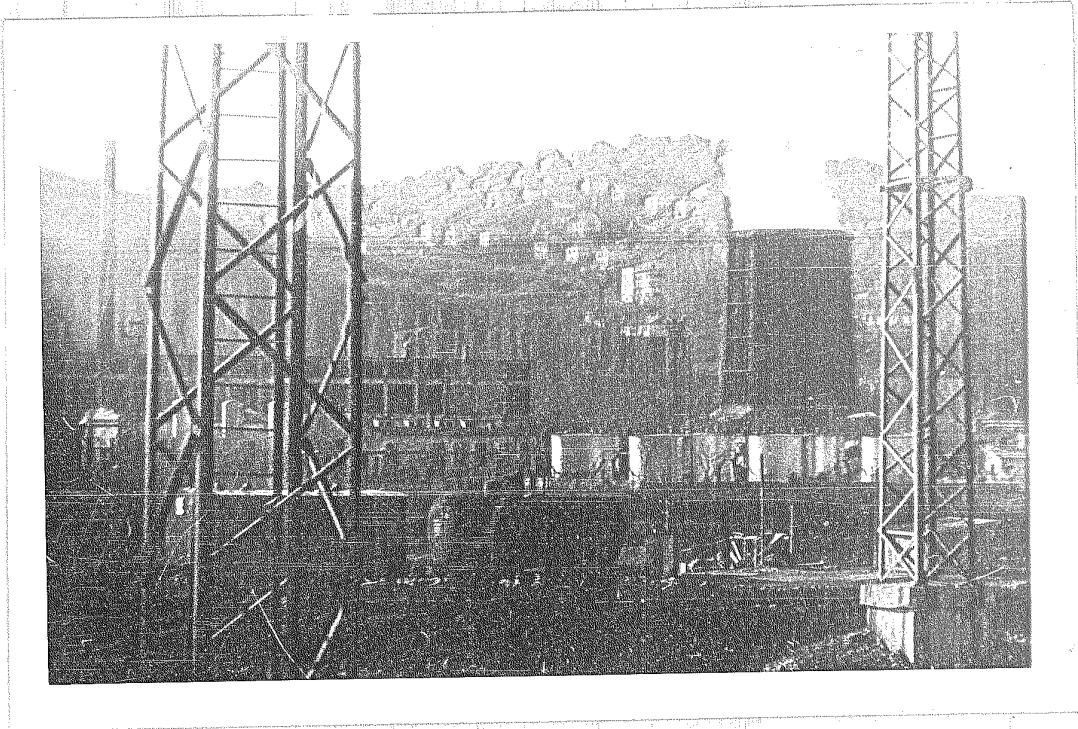
USSR WAC 249C TUAPSE 44 05 N 39 06 E  
/ORDZHONIKIDZE OIL REFINERY/

50X1-HUM



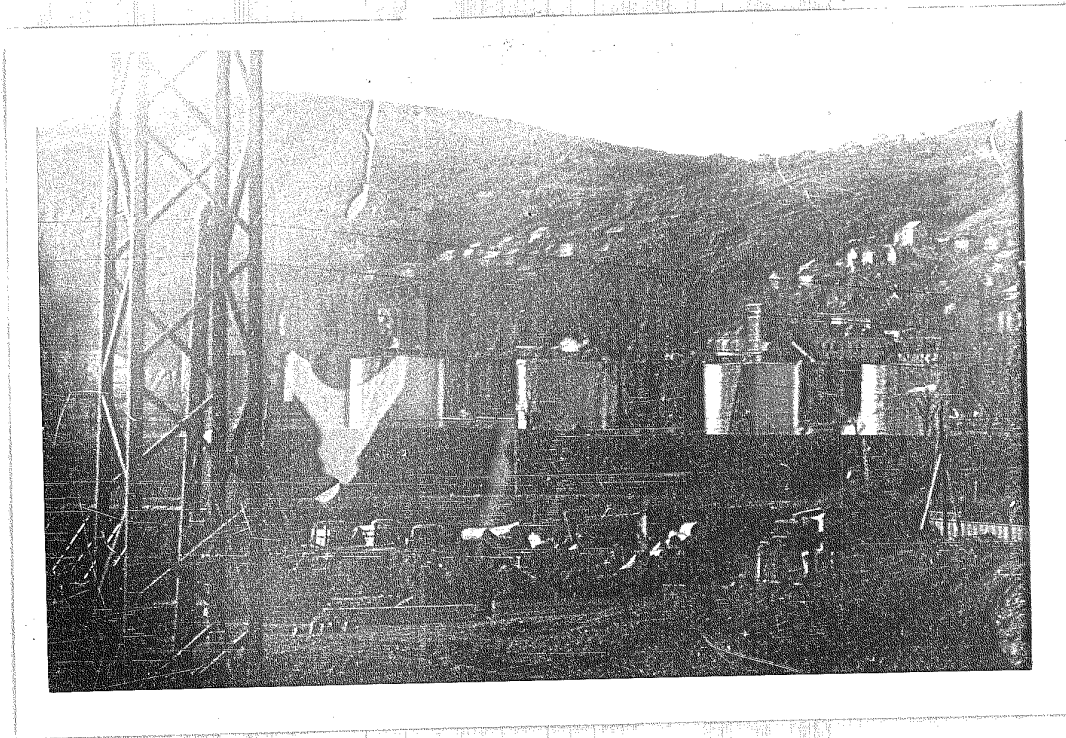
USSR WAC 249C TUAPSE 44 05 N 39 06 E  
ORDZHONIKIDZE OIL REFINERY

50X1-HUM



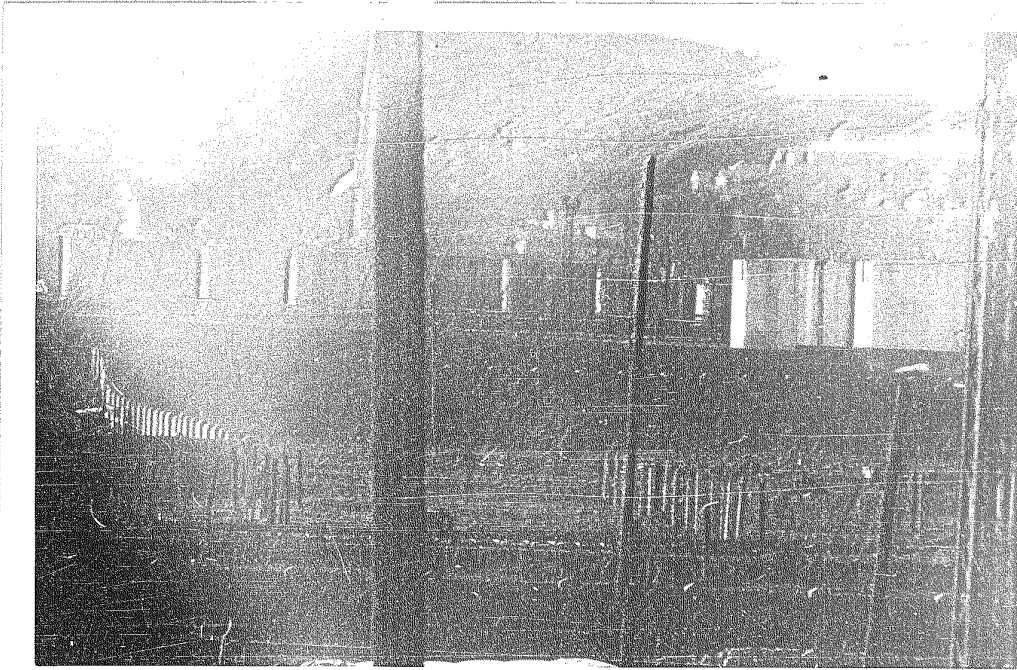
USSR WAC 249C TUAPSE 44 05 N 39 06 E  
/ORDZHONIKIDZE OIL REFINERY/

50X1-HUM



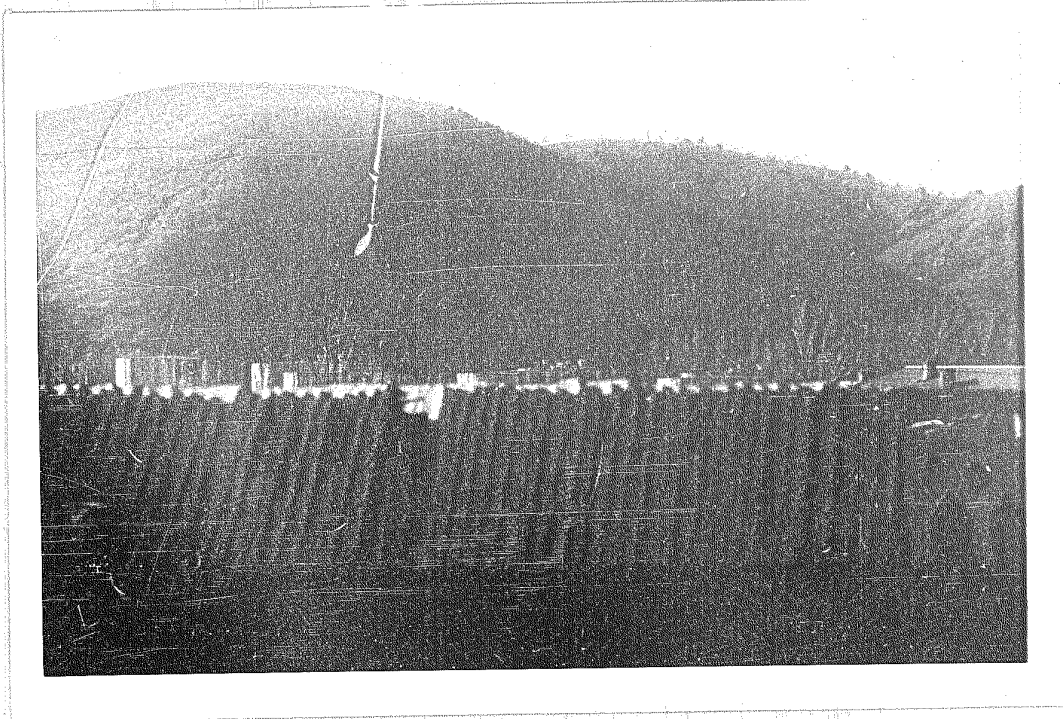
USSR WAC 249C TUAPSE 44 05 N 29 06 E  
ORDZHONIKIDZE OIL REFINERY

50X1-HUM



USSR WAC 249C TUAPSE' 44 05 N 39 06 E  
ORDZHONIKIDZE OIL REFINERY

50X1-HUM



USSR WAC 249C TUAPSE 44 05 N 29 06 E  
ORDZHONIKIDZE OIL REFINERY

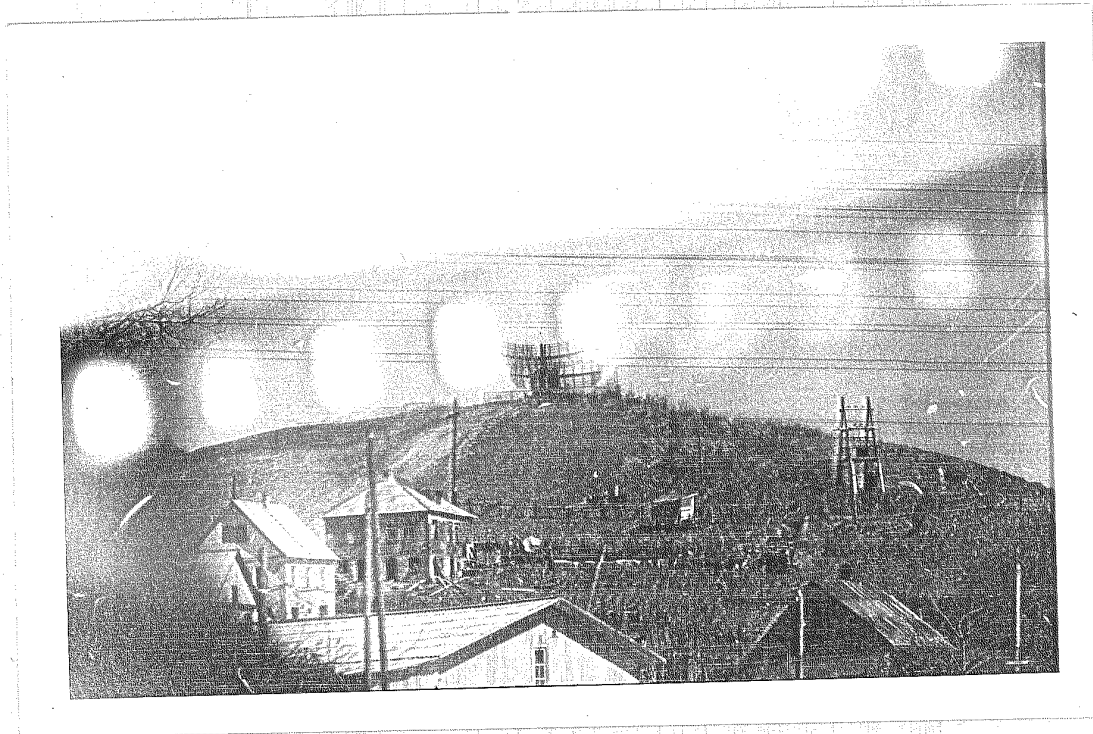
50X1-HUM





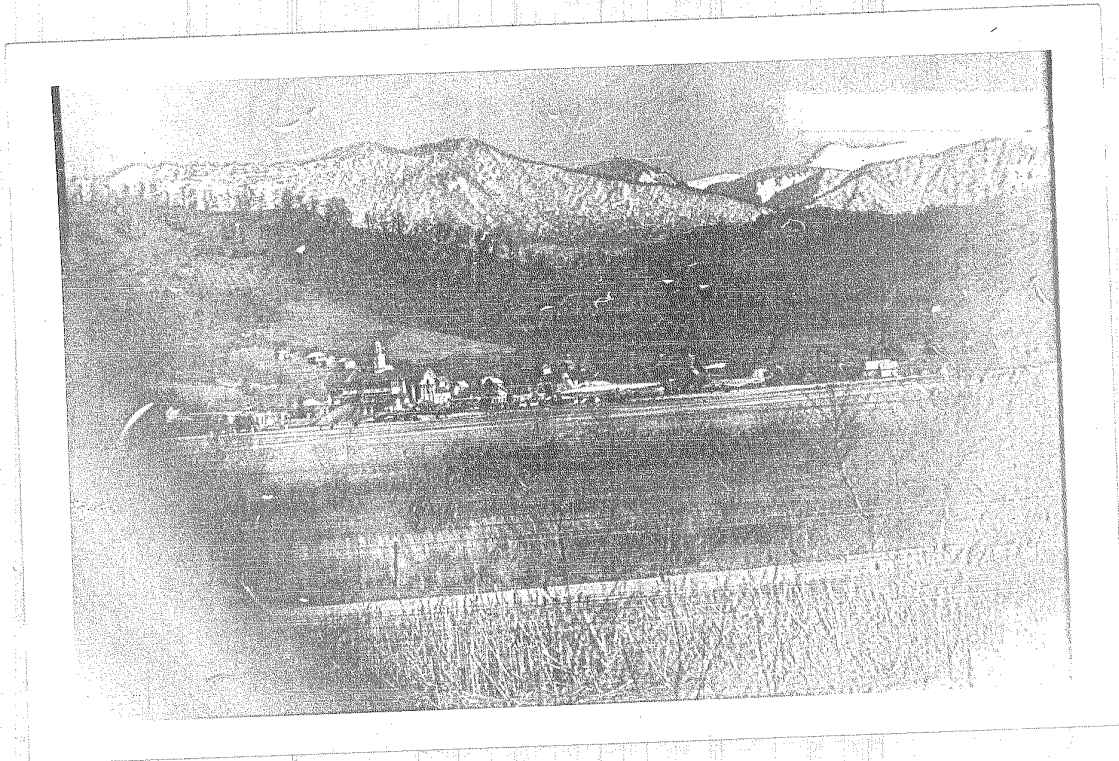
USSR WAC 324B ADLER  
AIRFIELD, RADAR.

50X1-HUM



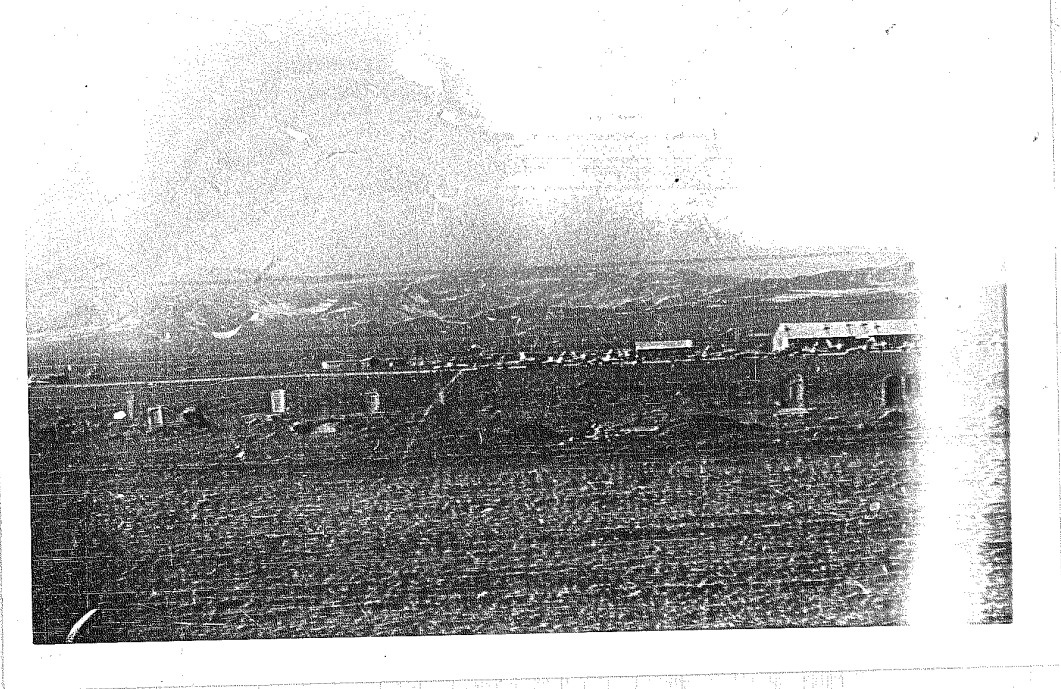
USSR WAC 324B ADLER  
AIRFIELD. RADAR.

50X1-HUM



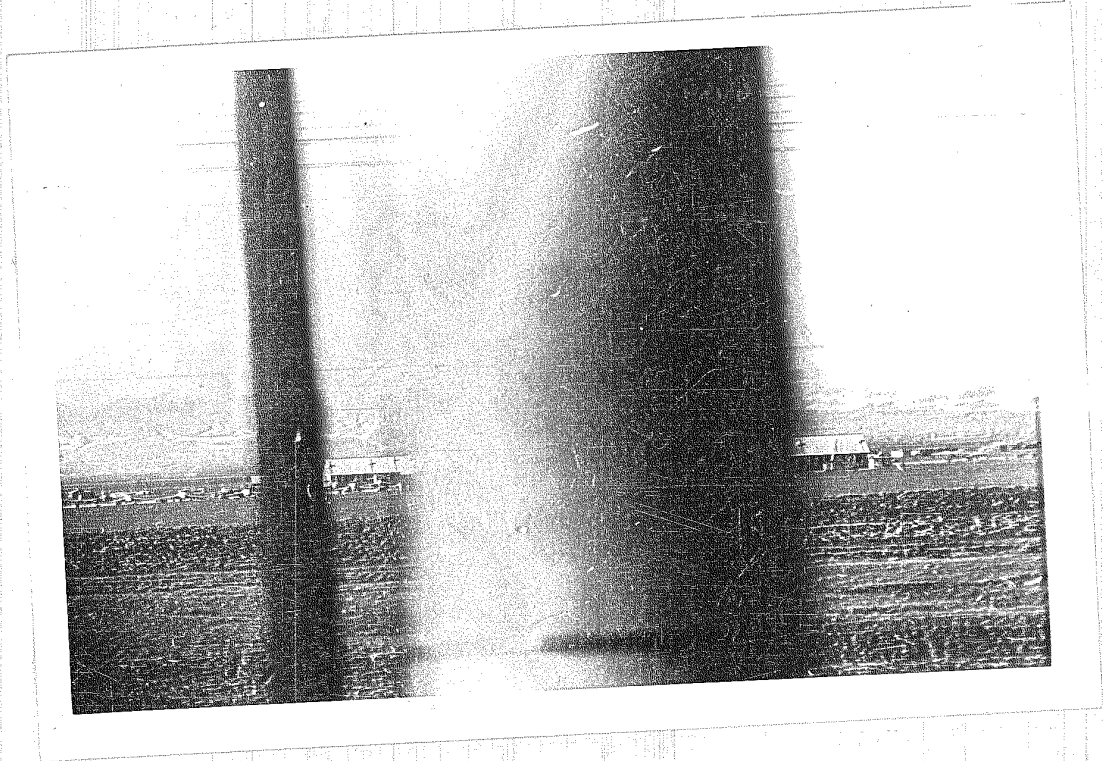
USSR WAC 324B ADLER  
AIRFIELD.

50X1-HUM



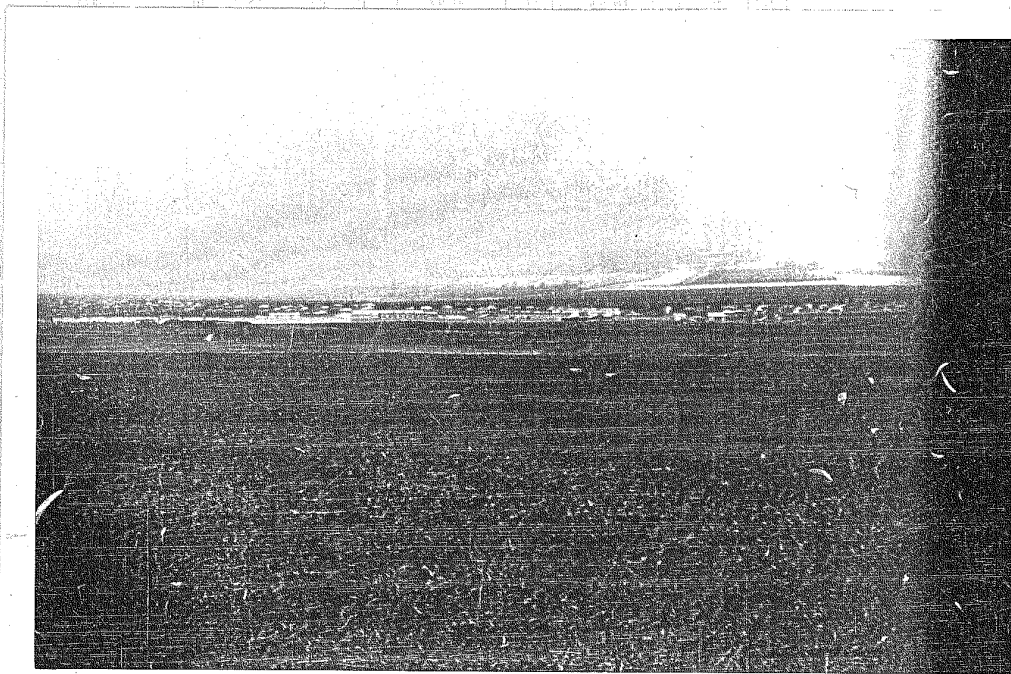
USSR WAC 325D TBILISI (NR) 41 42 N 44 45 E

50X1-HUM



USSR WAC 325D TBILISI 41 42 N 44 45 E

50X1-HUM



USSR WAC 325D TBILISI 41 42 N 44 45 E

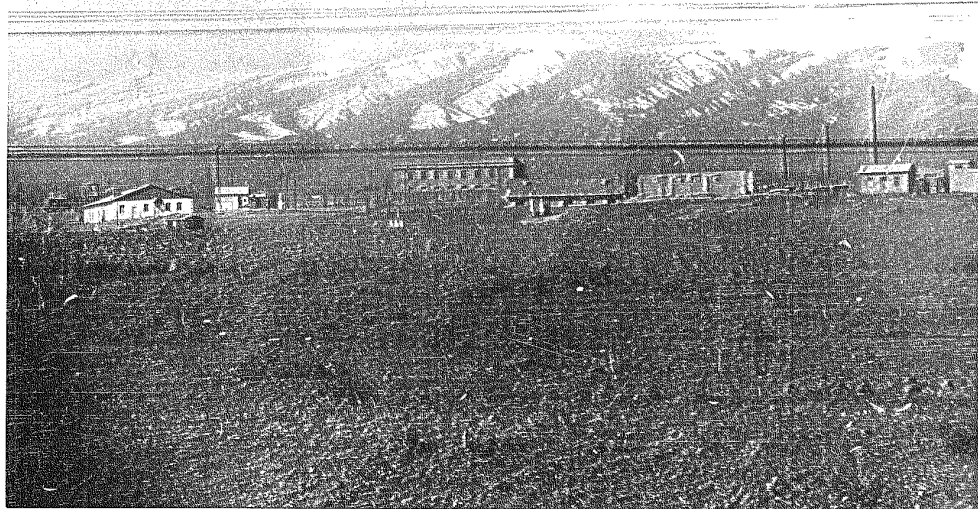
50X1-HUM



50X1-HUM

USSR WAC 325D TBILISI 41 42 N 44 45 E

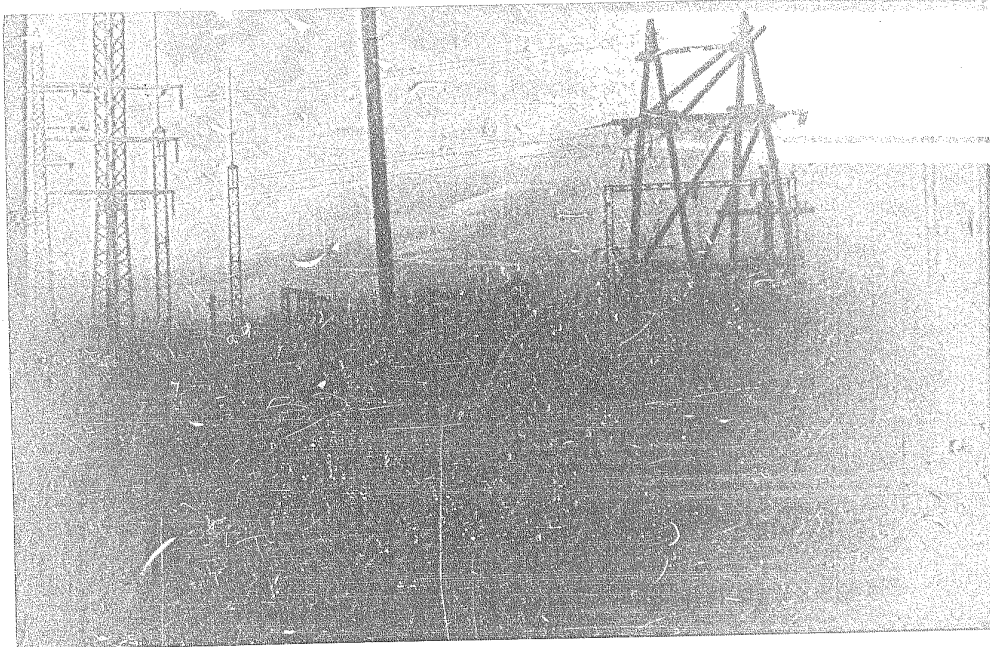




USSR WAC 325D TBILISI 41 42 N 44 45 E

50X1-HUM





USSR WAC 249C BELORECHENSK 44 46 N 39 52 E

50X1-HUM



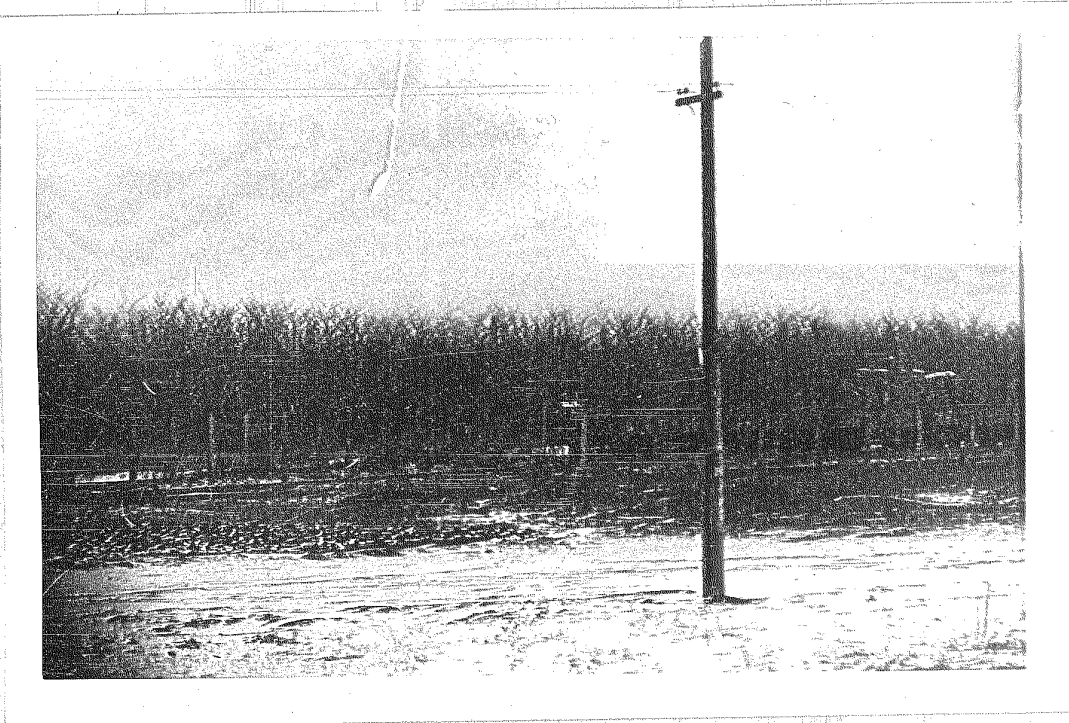
USSR WAC 249C BELORECHENSK 44 46 N 20 52 E

50X1-HUM



USSR WAC 249C ARMAVIR (NR) 45 00 N 41 08 E

50X1-HUM



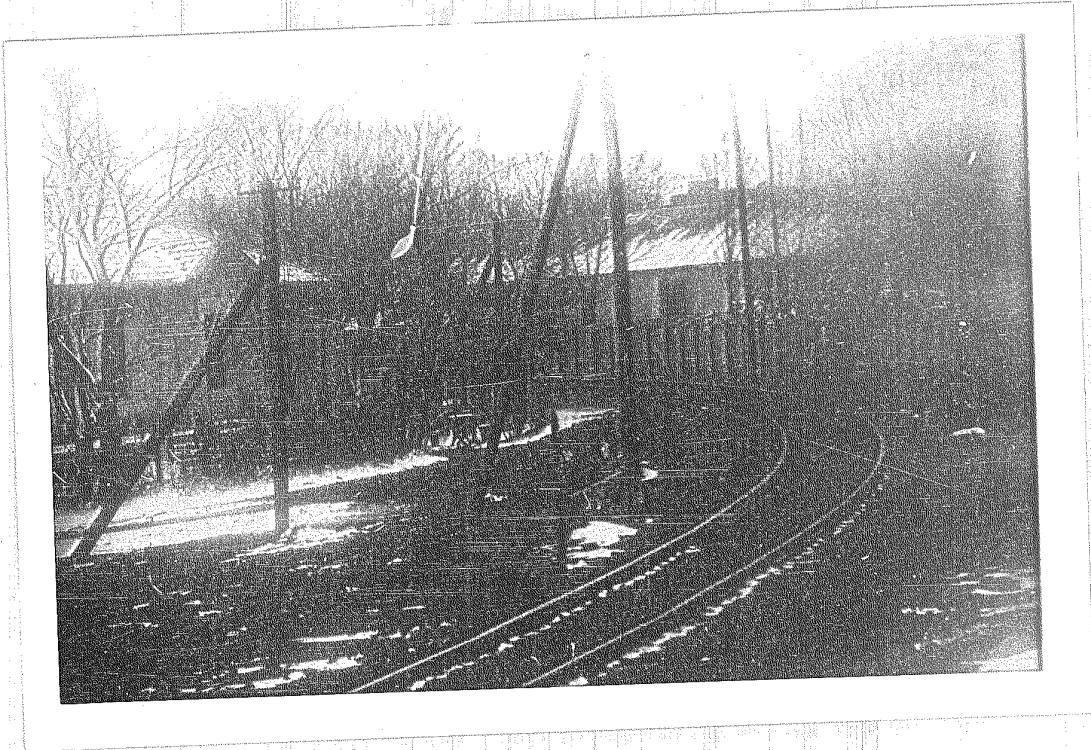
USSR WAC 249C ARMAVIR (NR) 45 00 N 41 08 E

50X1-HUM



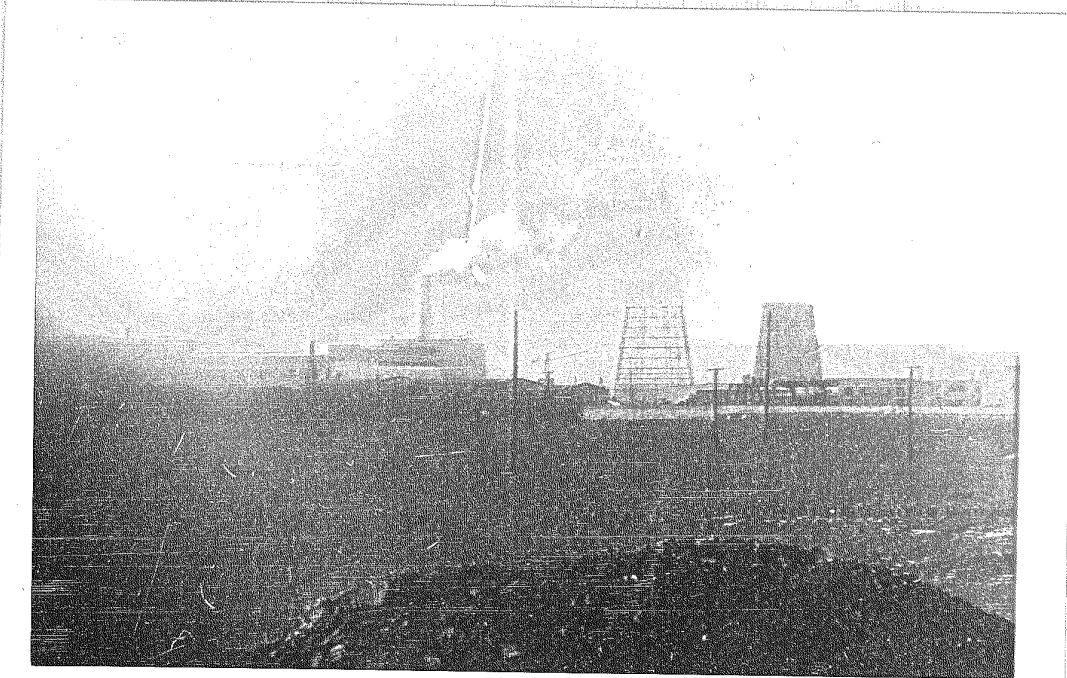
USSR WAC 249C ARMAVIR 45 00 N 41 08 E

50X1-HUM



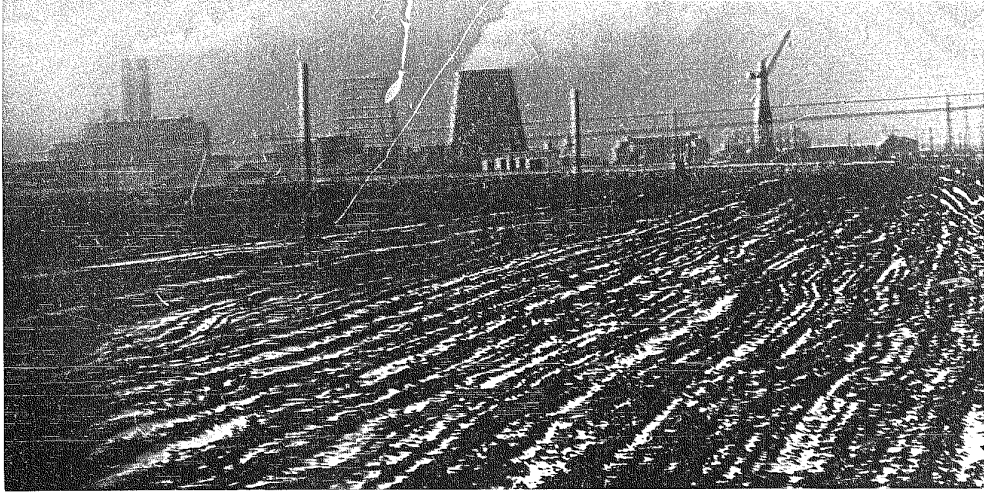
USSR WAC 249C ARMAVIR 45 00 N 41 08 E

50X1-HUM



USSR WAC 249C ARMAVIR 45 00 N 41 08 E

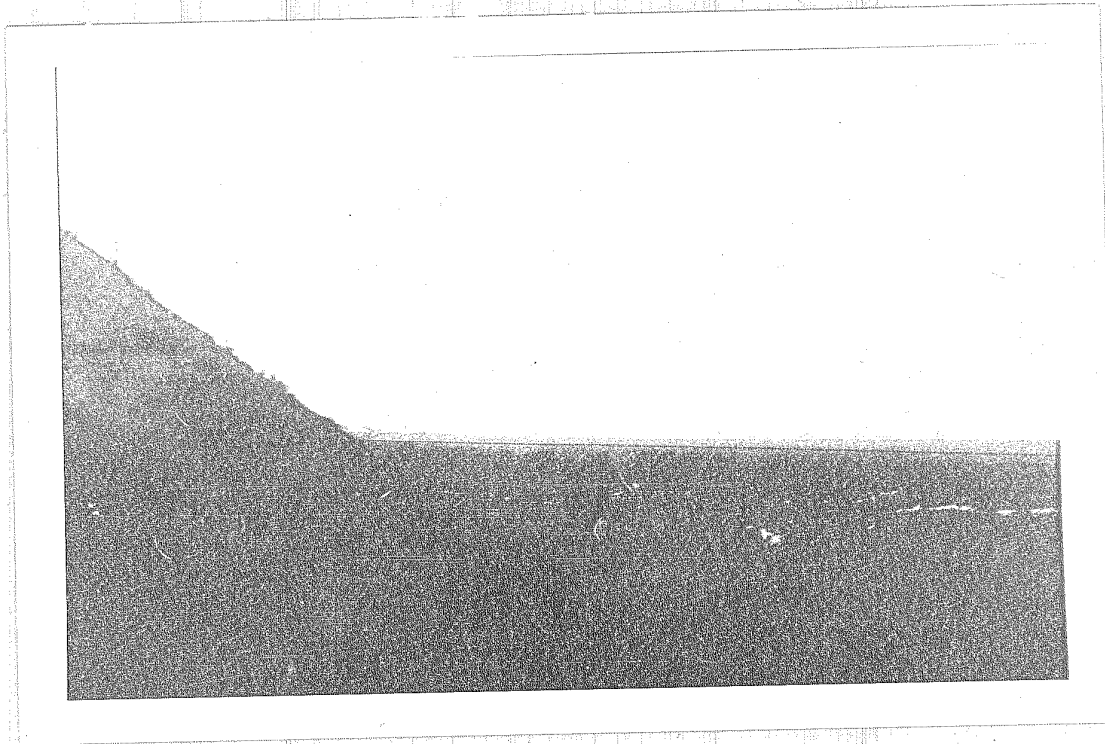
50X1-HUM



USSR WAC 249C ARMAVIR 45 00 N 41 08 E

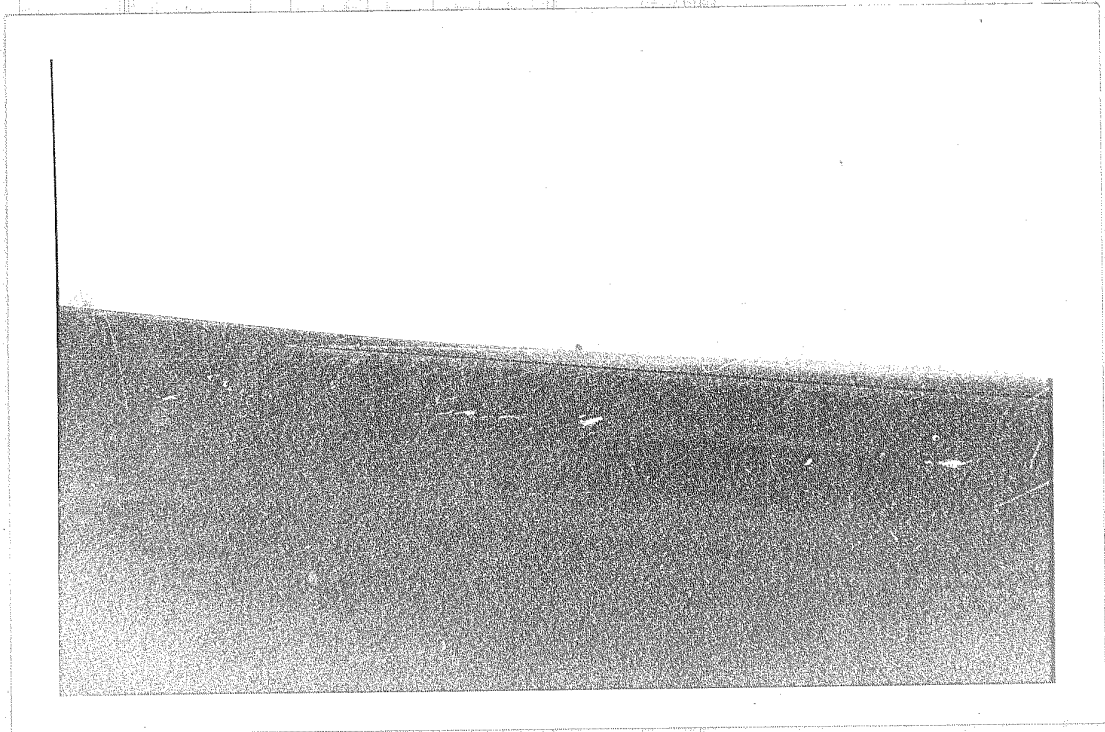
50X1-HUM





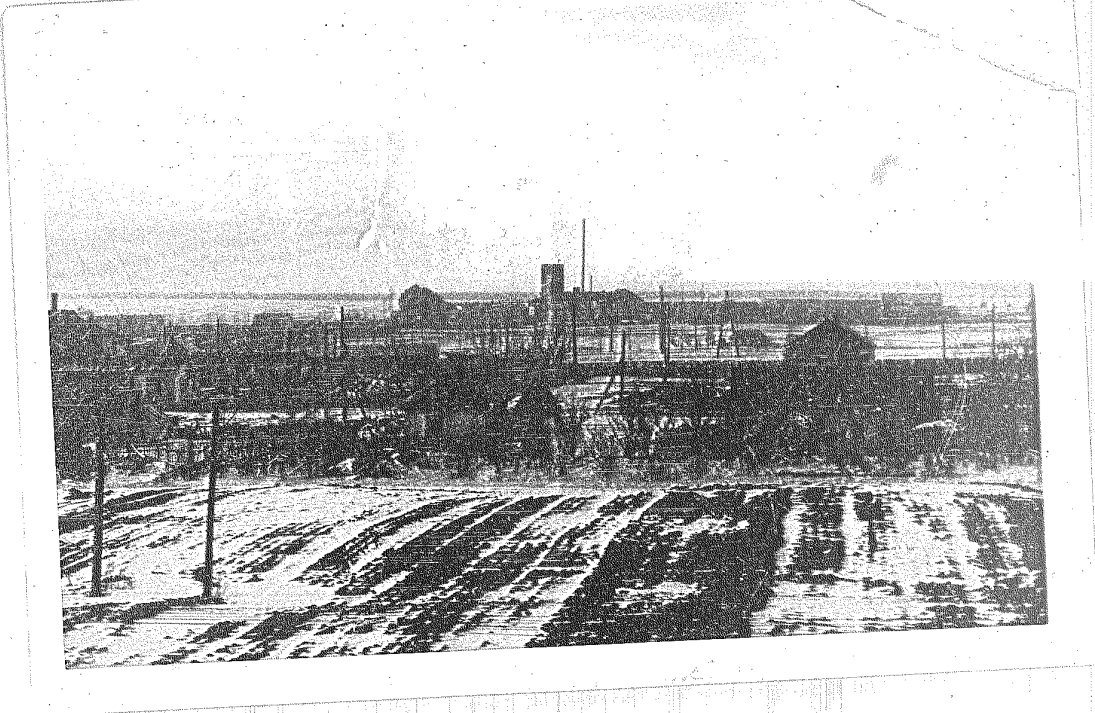
USSR WAC 234A KURSK 51 42 N 36 12 E

50X1-HUM



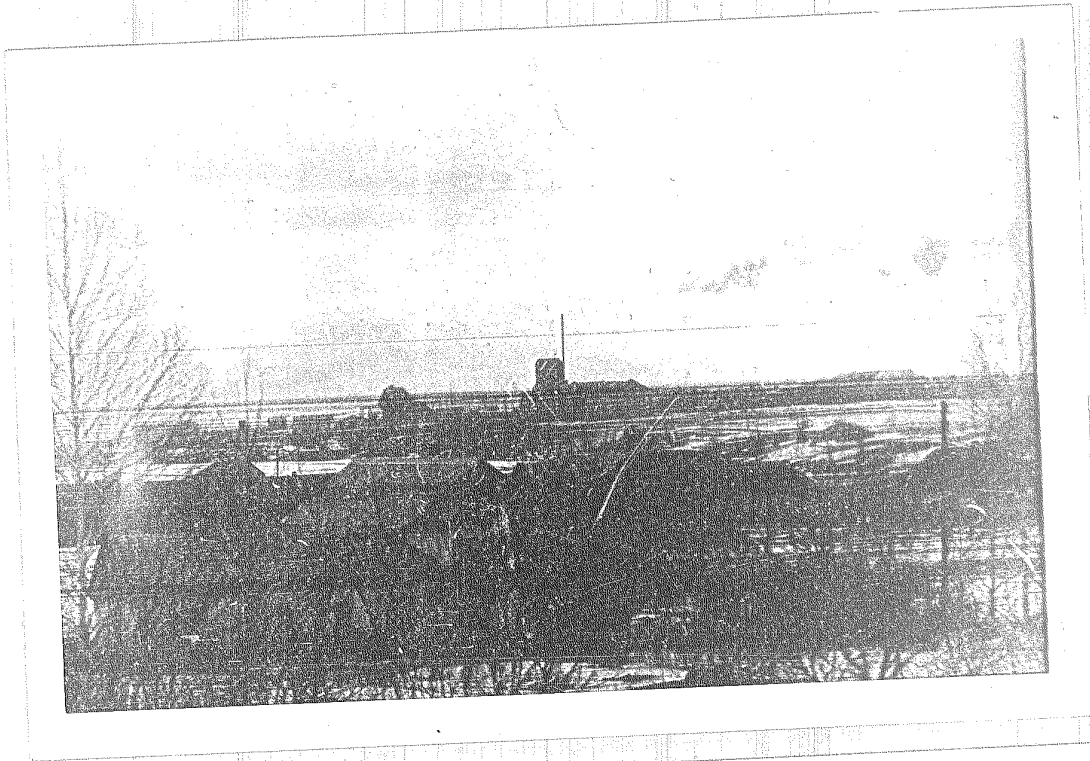
USSR WAC 23<sup>4</sup>A KURSK 51 42 N 36 12 E

50X1-HUM



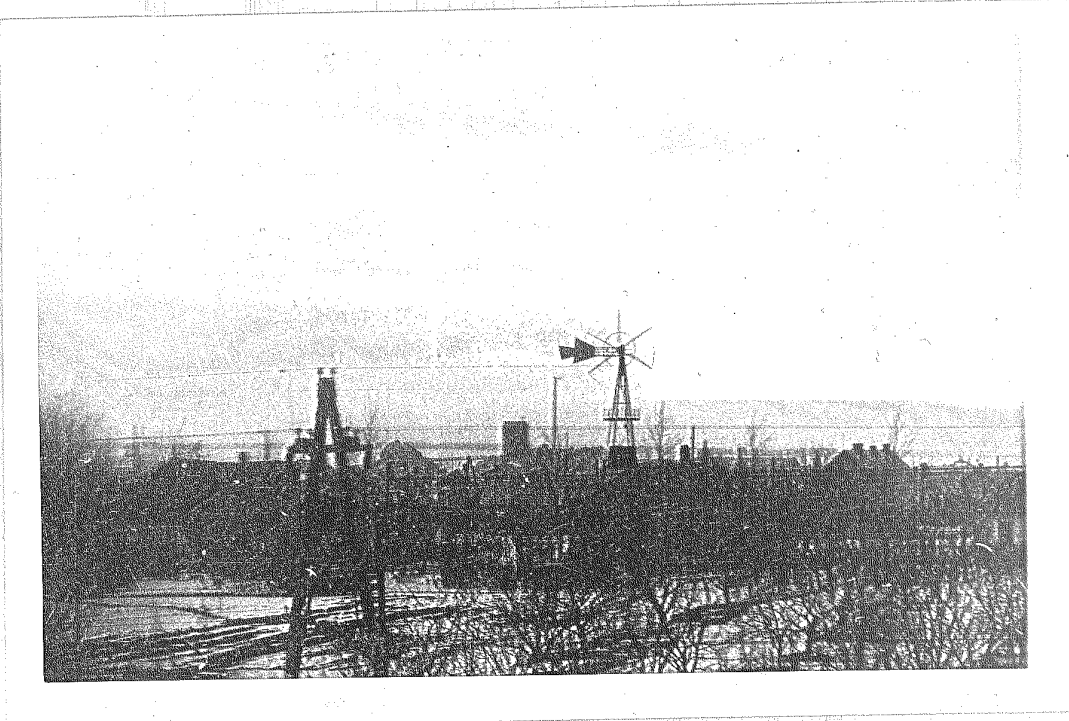
USSR WAC 167C  
FACTORY BETWEEN KURSK AND OREL

50X1-HUM



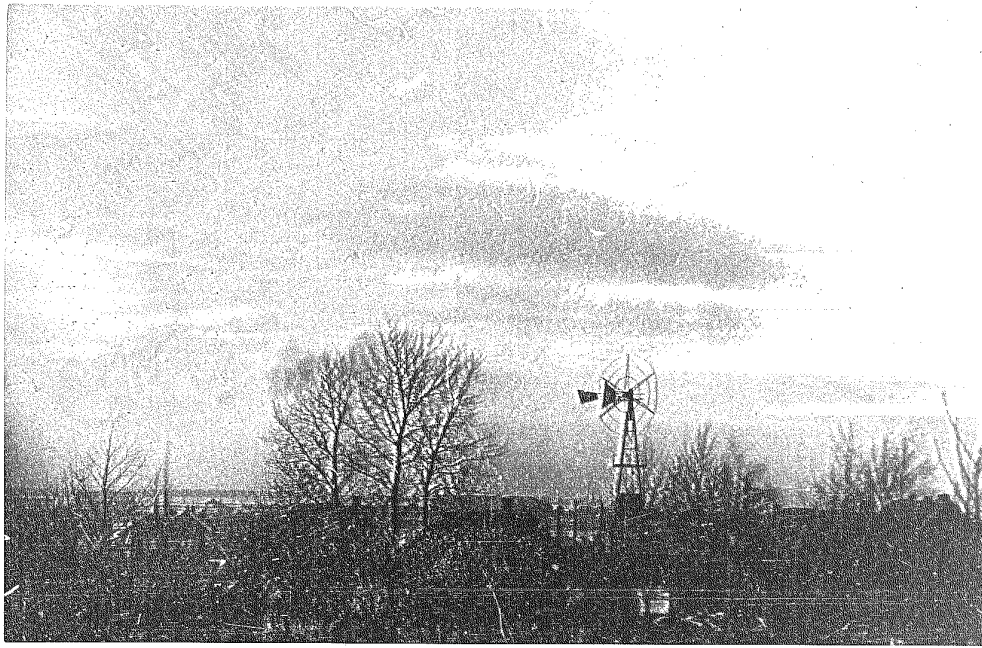
USSR WAC 167C  
FACTORY BETWEEN KURSK AND OREL

50X1-HUM



USSR WAC 167C

50X1-HUM



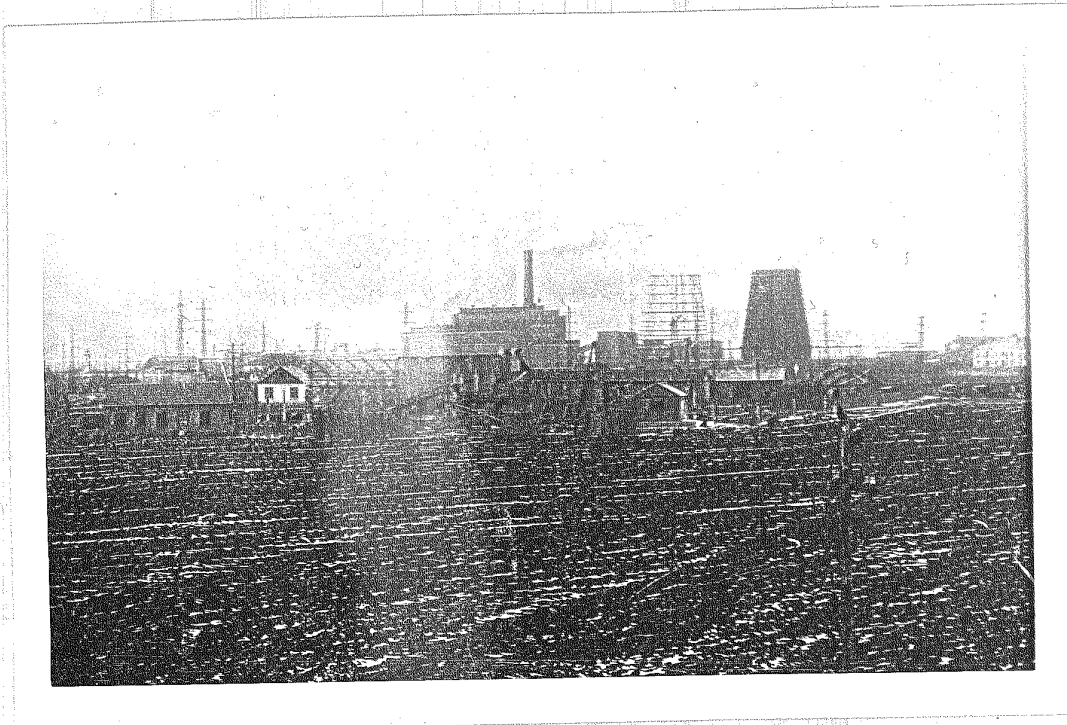
USSR WAC 167C

50X1-HUM



USSR WAC 249C ARMAVIR 4E 00 N 01 08 E

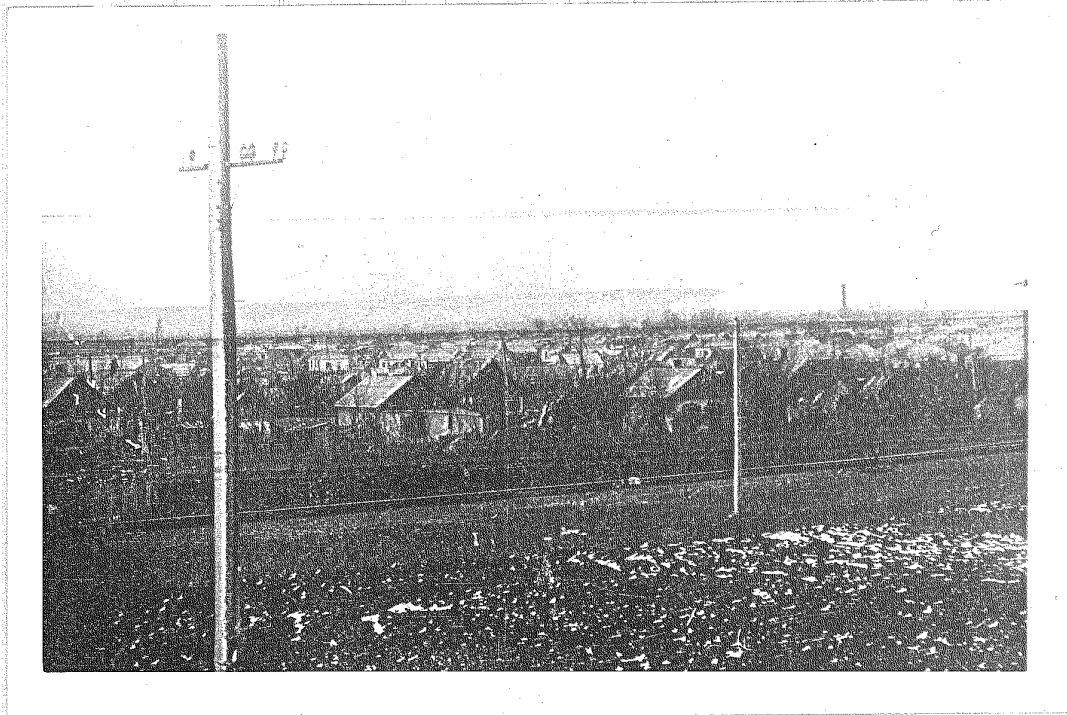
50X1-HUM



USSR WAC 249C ARMAVIR 45 00 N 41 08 E

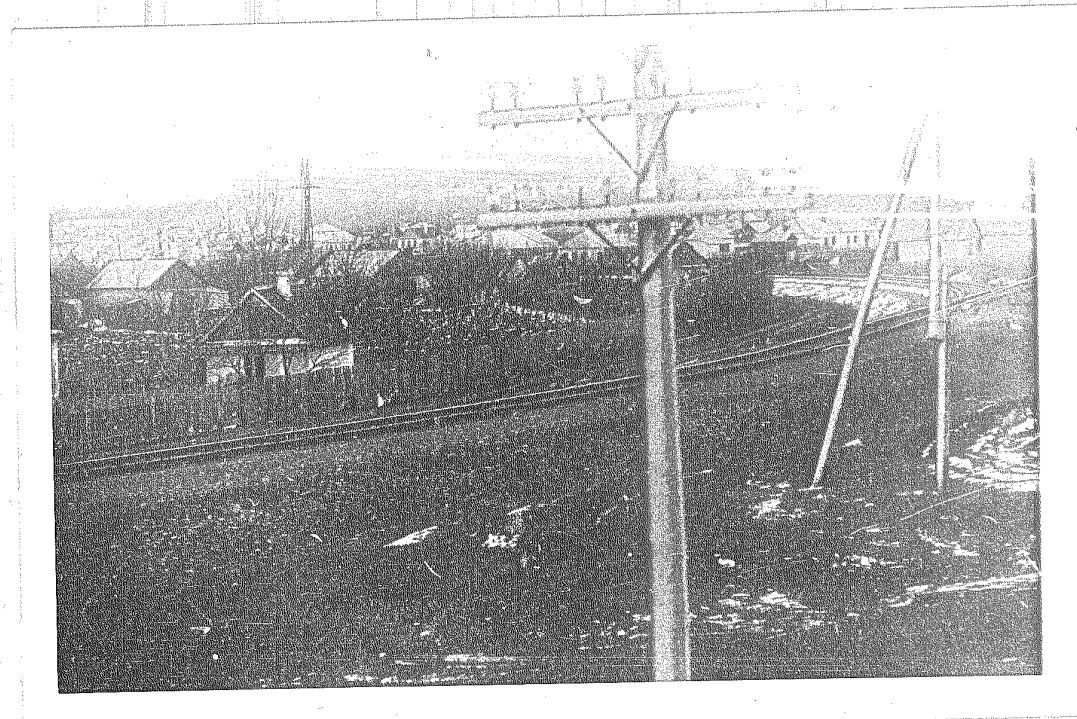
50X1-HUM





USSR WAC 249C NOVO KUBANSKAYA 45 06 N 41 03 E

50X1-HUM



USSR WAC 249C NOVO KUBANSKAYA 45 06 N 41 03 E

50X1-HUM



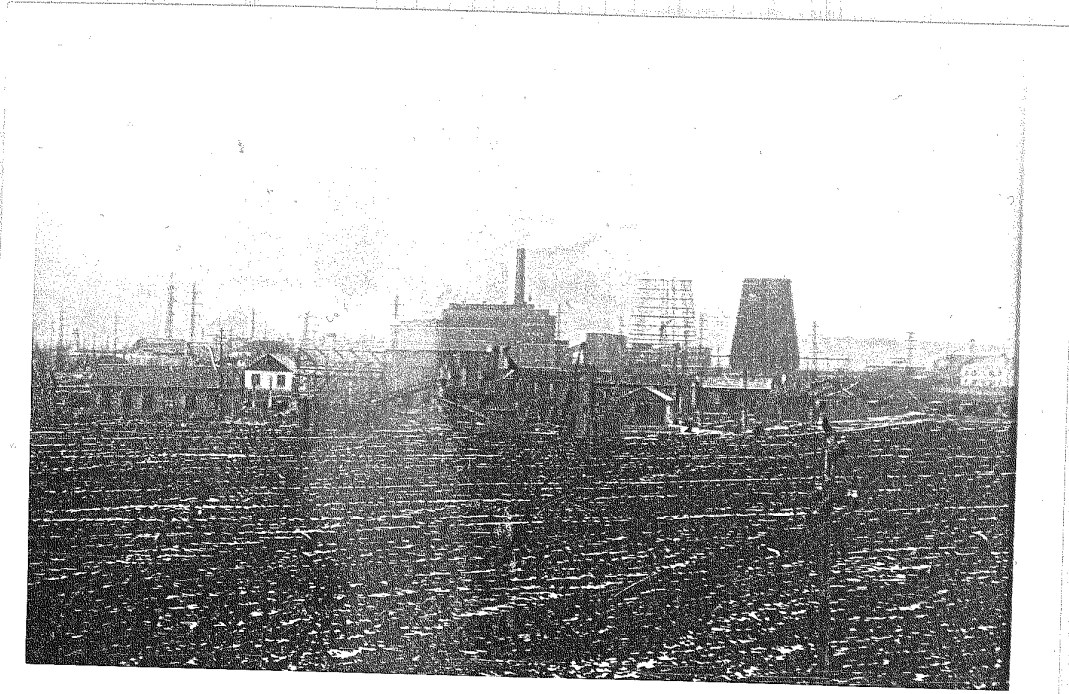
USSR WAC 249C NOVO KUBANSKAYA 45 06 N 41 03 E

50X1-HUM



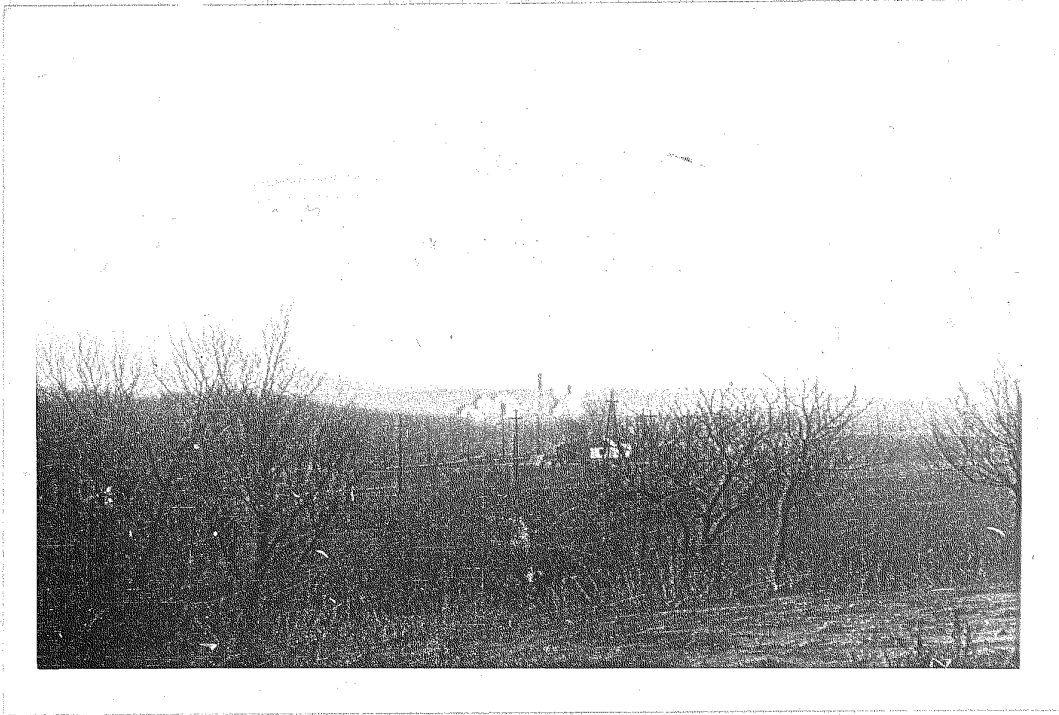
USSR WAC 249C KAVKAZSKAYA (NR) 45 26 N 40 40 E

50X1-HUM



USSR WAC 249C ARMAVIR 45 00 N 41 08 E

50X1-HUM



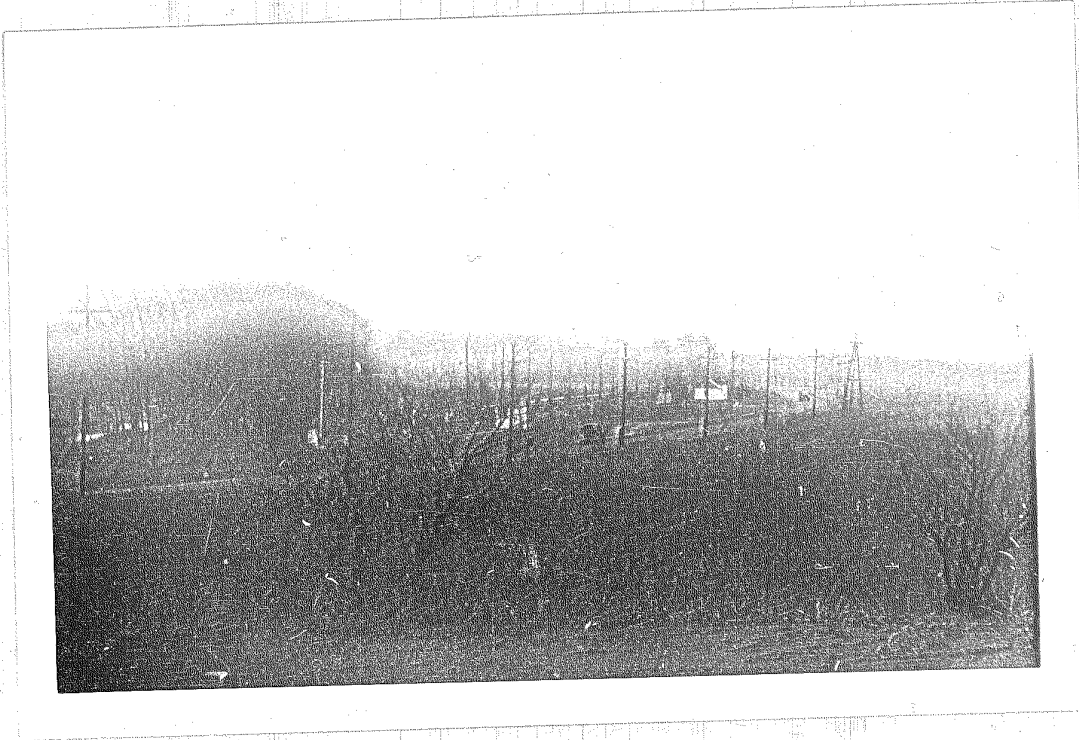
USSR WAC 249C KAVKAZKAYA (NR) 45 26 N 40 40 E

50X1-HUM



USSR WAC 167C

50X1-HUM



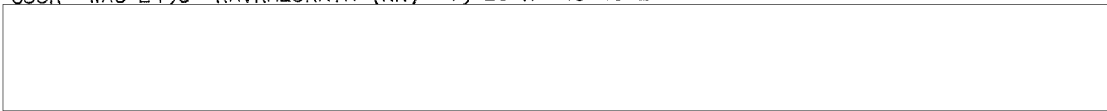
USSR WAC 249C KAVKAZSKAYA (NR) 45 26 N 110 10 E

50X1-HUM

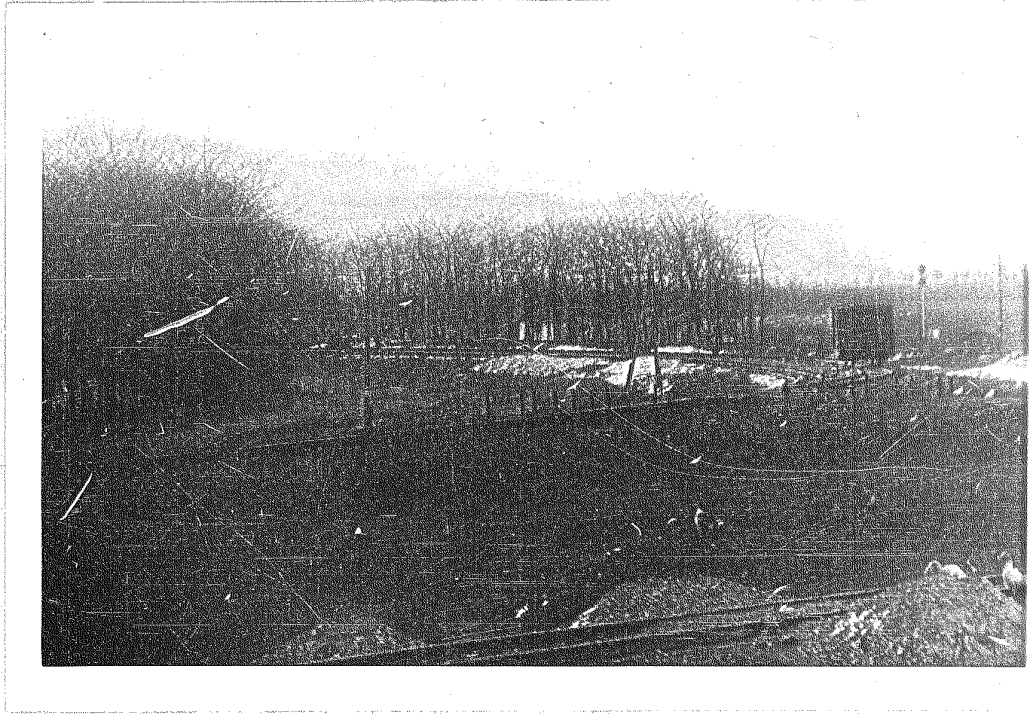




USSR WAC 249C KAVKAZSKAYA (NR) 45 26 N 40 40 E

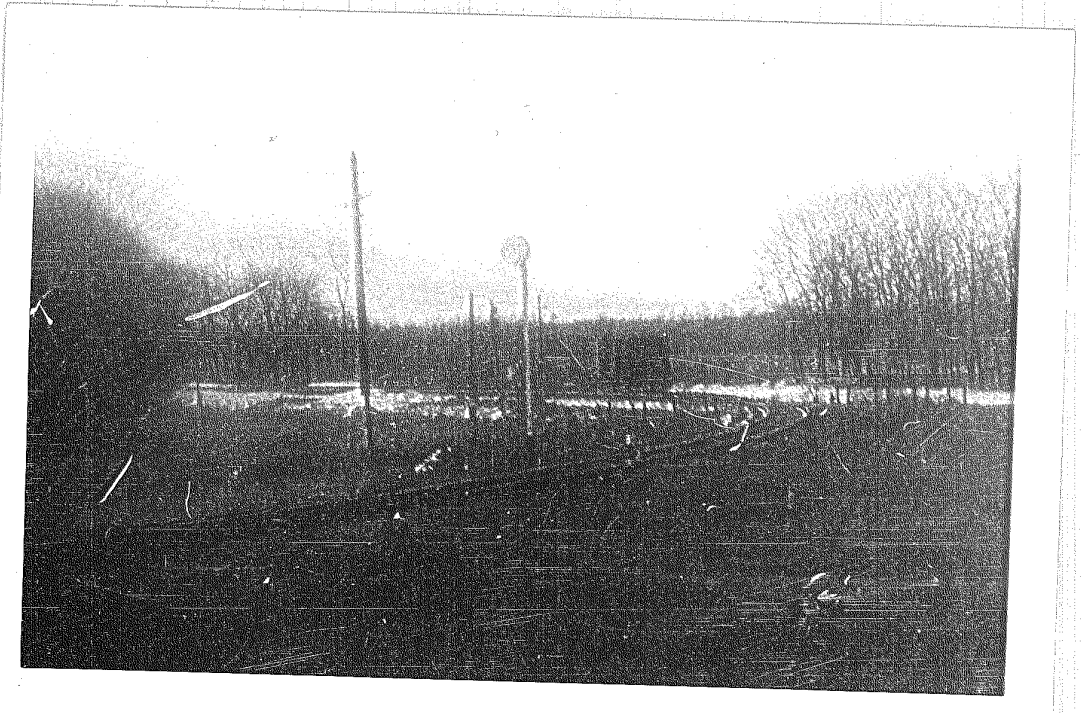


50X1-HUM



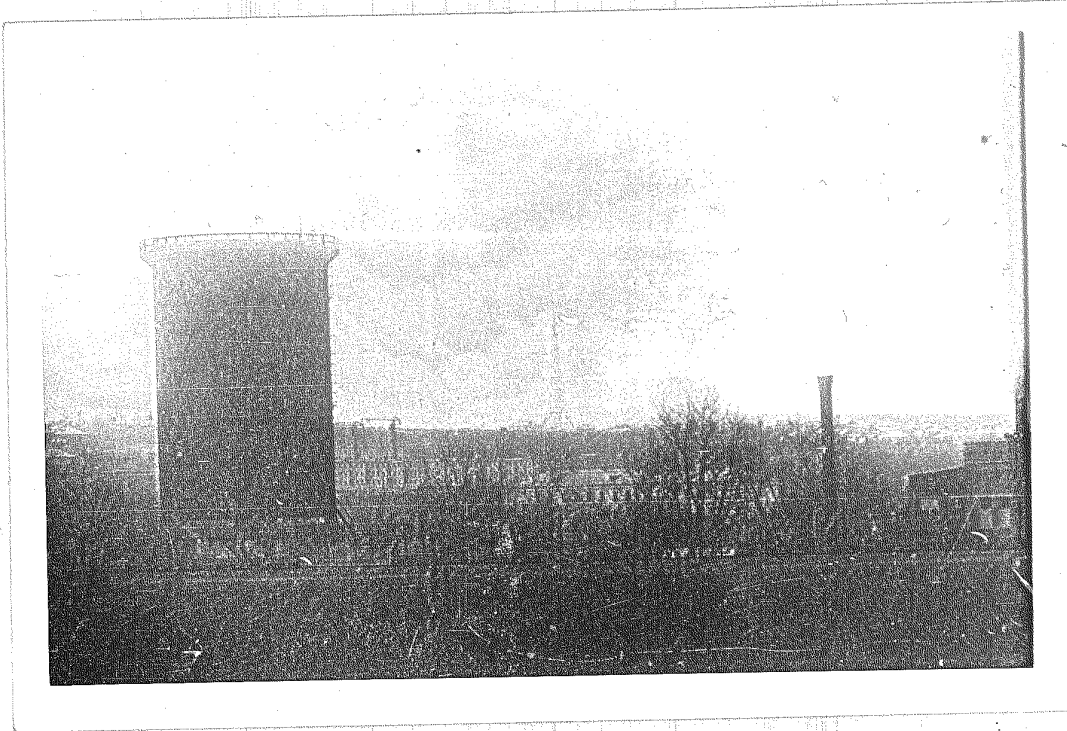
USSR WAC 249C KAVKAZSKAYA (NR) 45 26 N 40 40 E

50X1-HUM



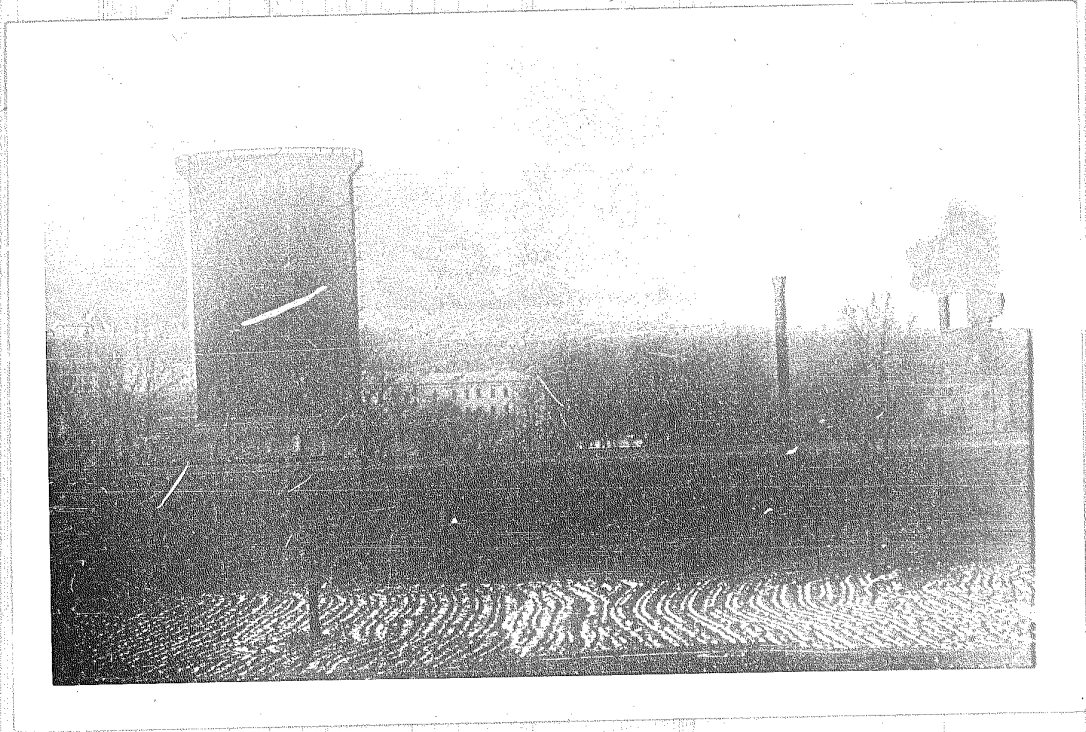
USSR WAC 249C KAVKAZSKAYA (NR) 45 26 N 40 40 E

50X1-HUM



USSR WAC 249C KAVKAZSKAYA 45 26 N 40 40 E

50X1-HUM



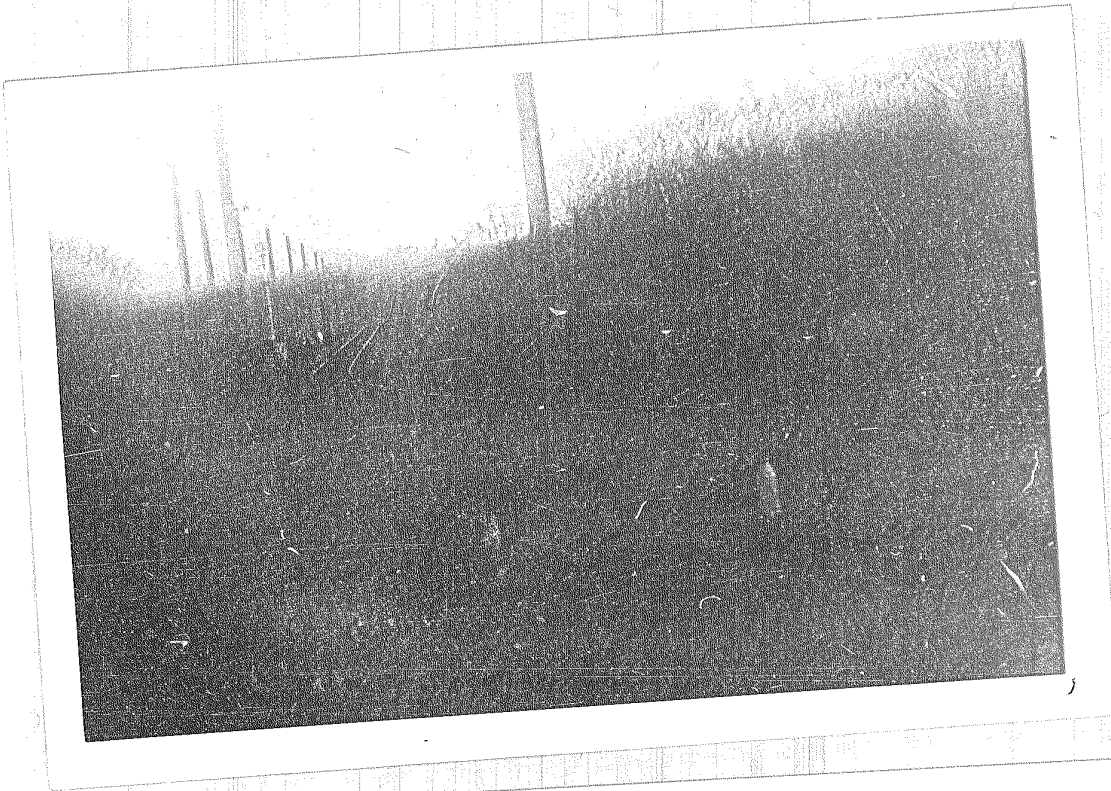
USSR WAC 249C KAVKAZSKAYA 45 26 N 40 40 E

50X1-HUM



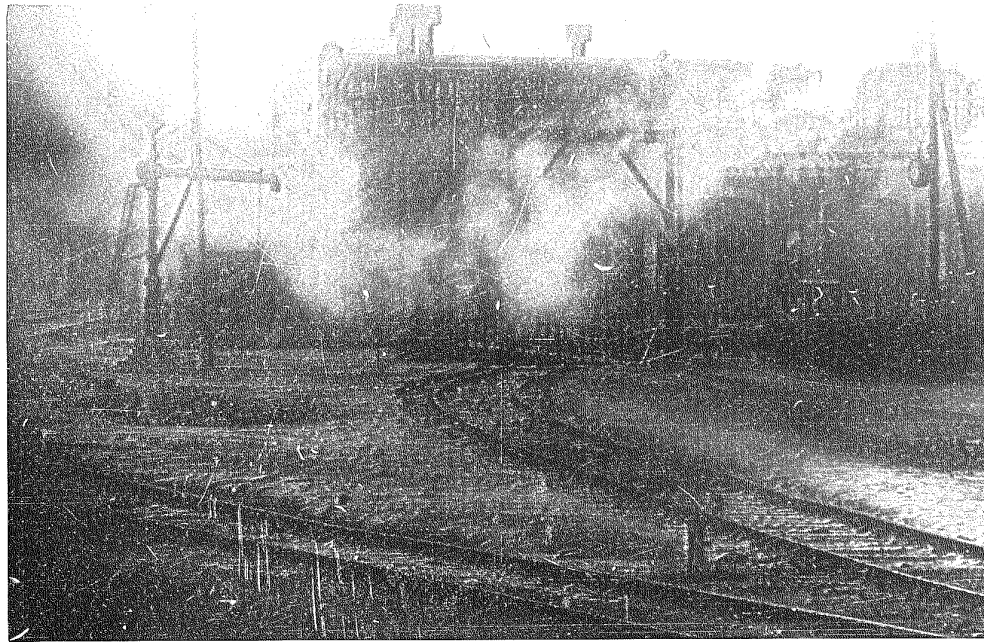
USSR WAC 249C KAVKAZSKAYA 45 26 N 40 40 E

50X1-HUM



USSR WAC 249C TIKHORETSK 45 51 N 40 07 E

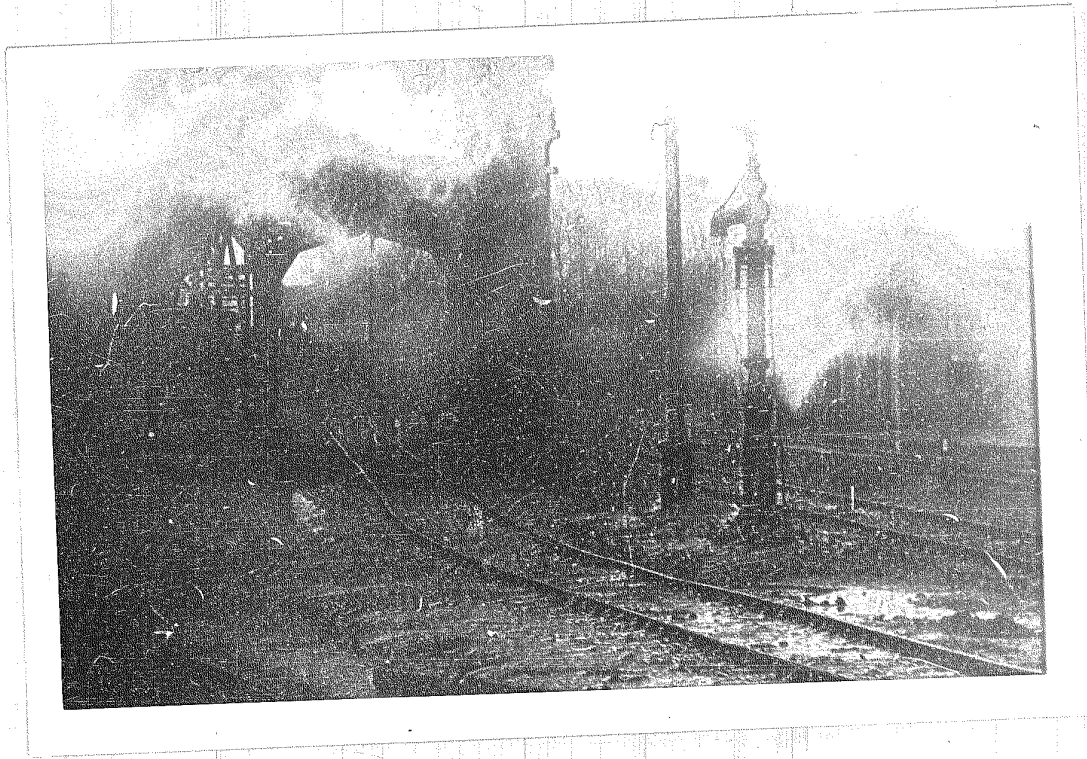
50X1-HUM



USSR WAC 249C TIKHORETSK 45 51 N 40 07 E

50X1-HUM





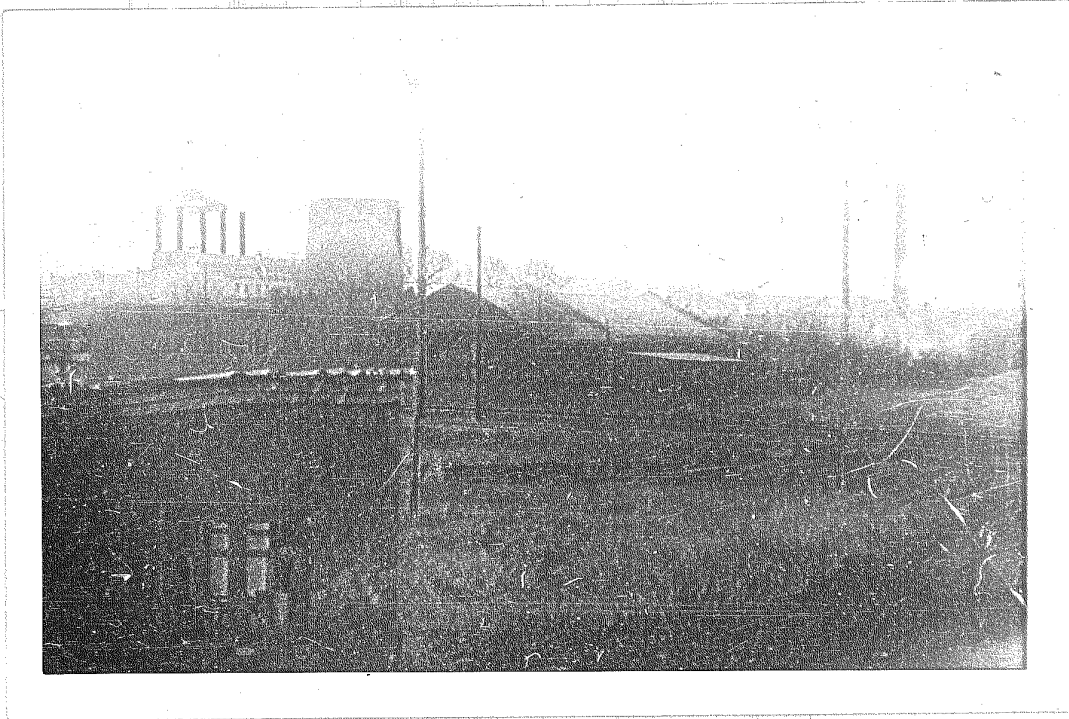
USSR WAC 249C TIKHORETSK 45 51 N 40 07 E

50X1-HUM



USSR WAC 249C TIKHORETSK 45 51 N 40 07 E

50X1-HUM



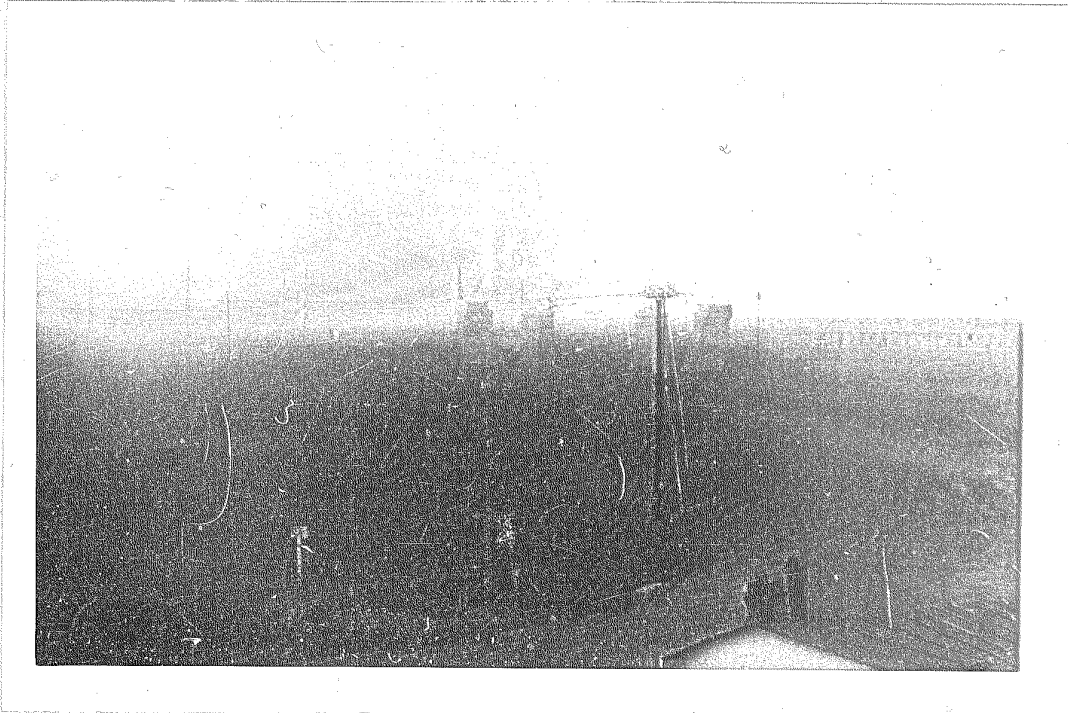
USSR WAC 249C TIKHORETSK 45 51 N 40 07 E

50X1-HUM



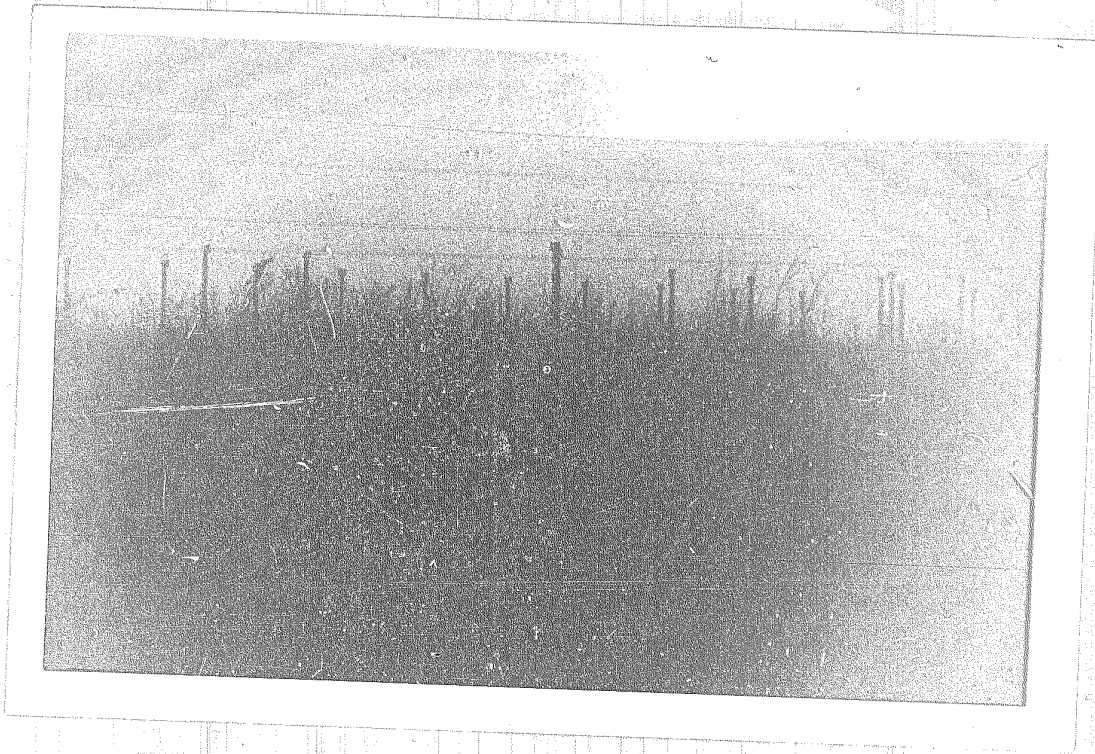
USSR WAC 240B SAMARSKOYE (NR) 46 56 N 39 41 E

50X1-HUM



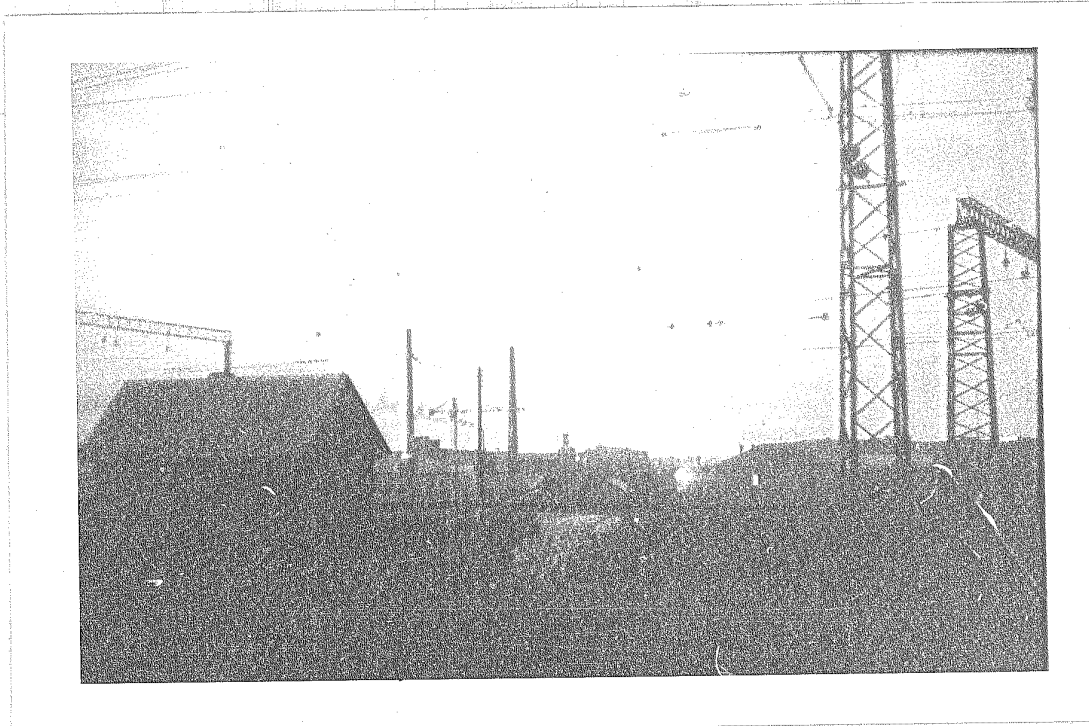
USSR WAC 249B ROSTOV NA DONU 47 14 N 39 42 E

50X1-HUM



USSR WAC 249A TAGANROG (NR) 47 12 N 28 56 E

50X1-HUM



USSR WAC 234A KURSK (NR) 51 42 N 36 12 E

50X1-HUM



USSR WAC 234A KURSK (NR) 51 42 N 36 12 E

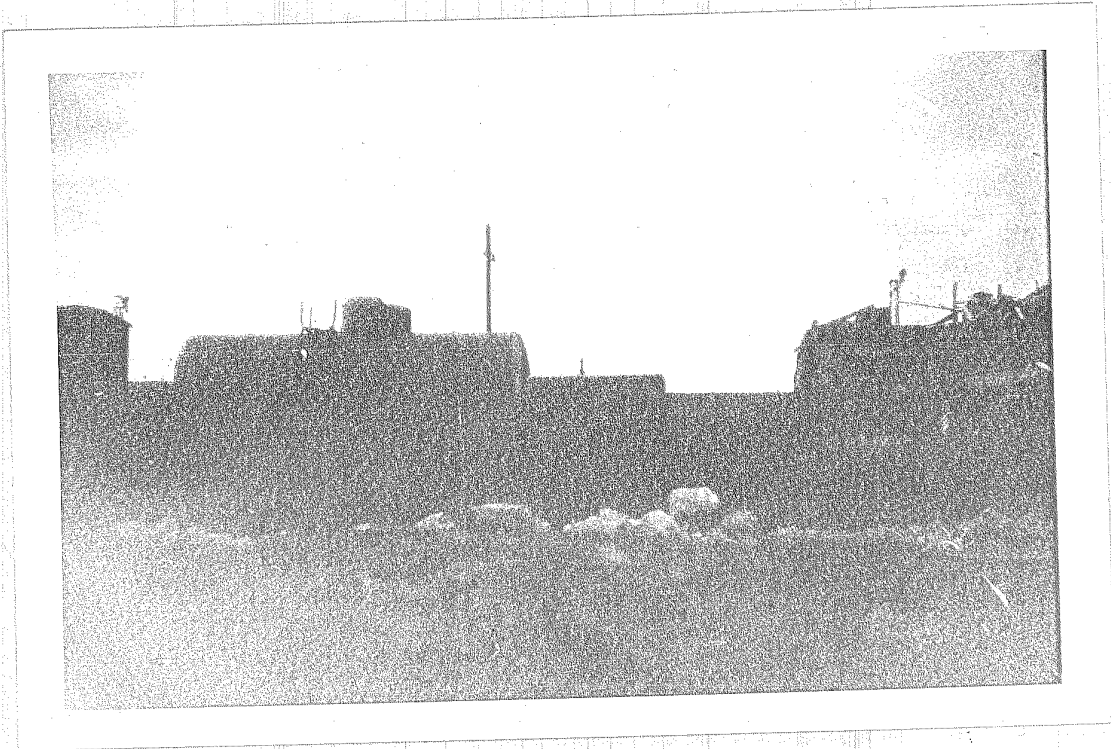
50X1-HUM





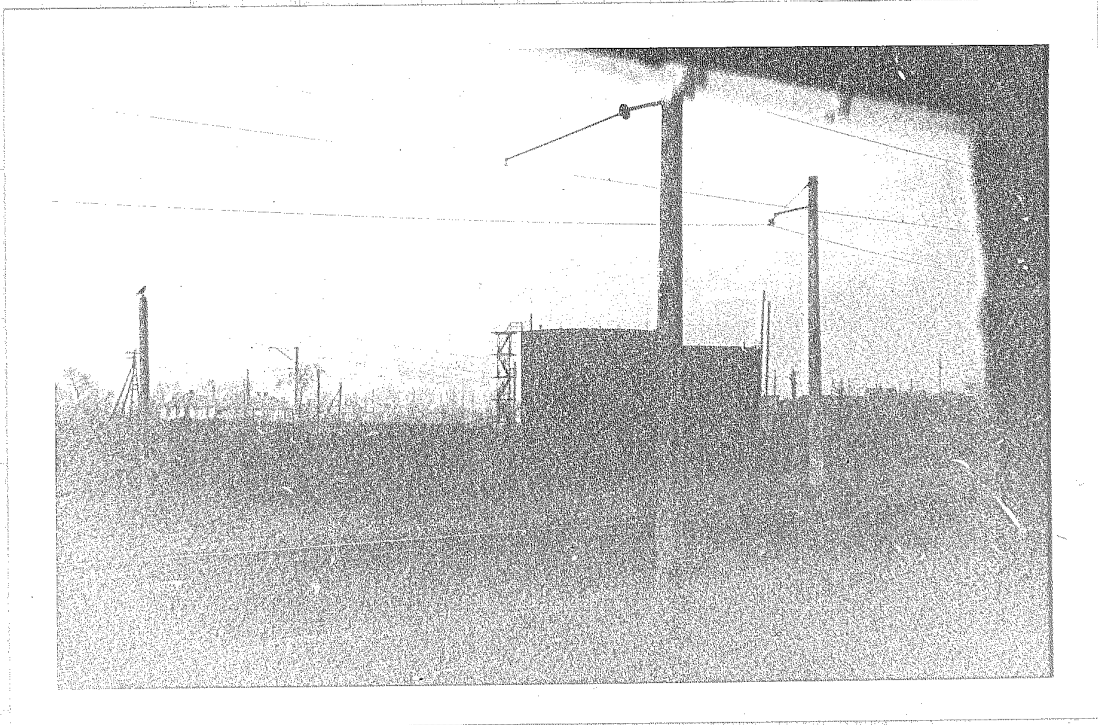
USSR WAC 234A KURSK (NR) 51 42 N 36 12 E

50X1-HUM



USSR WAC 234A KURSK 51 42 N 36 12 E

50X1-HUM



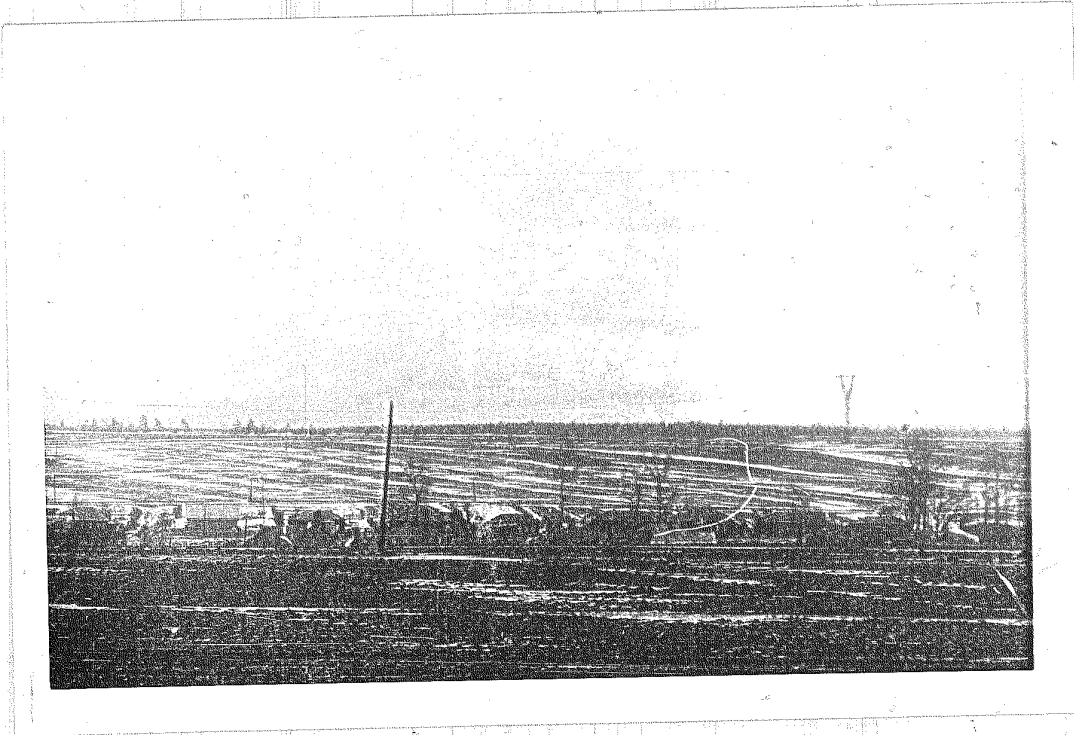
USSR WAC 234A KURSK 51 42 N 36 12 E

50X1-HUM



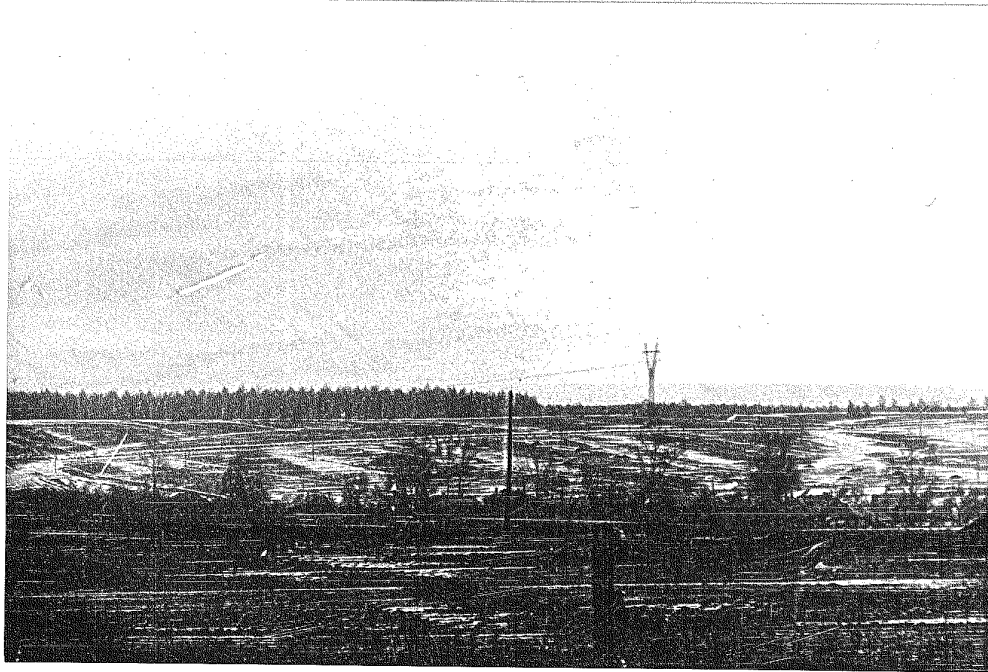
USSR WAC 167B SERPUKHOV 54 55 N 37 25 E

50X1-HUM



USSR WAC 167B SERPUKHOV 54 55 N 37 25 E

50X1-HUM



USSR WAC 167B SERPIKHOV

50X1-HUM



USSR WAC 167B SERPIUKHOV

50X1-HUM



USSR WAC 167B SERPUKHOV (NR) 54 55 N 37 25 E

50X1-HUM





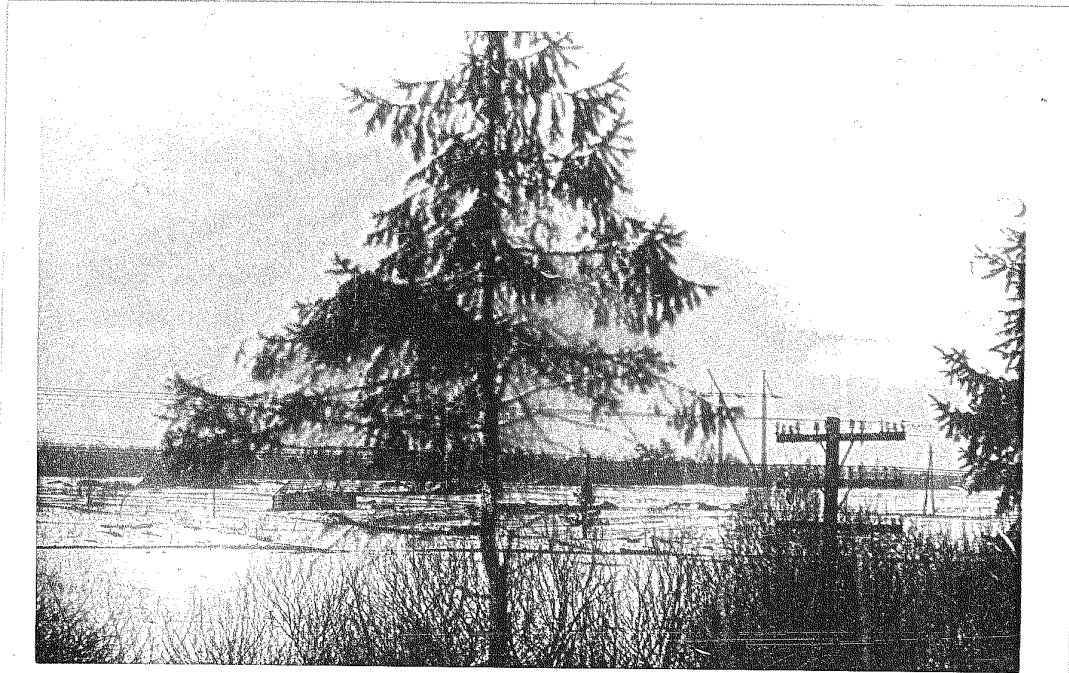
USSR WAC 167B SERPUKHOV 54 55 N 37 25 E

50X1-HUM



USSR WAC 167B SERPUKHOV (NR) 54 55 N 37 25 E

50X1-HUM



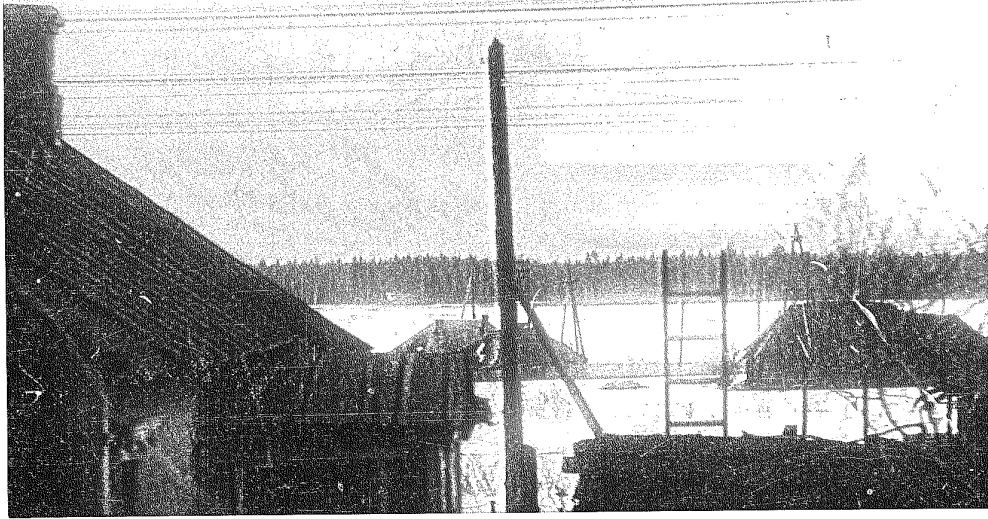
USSR WAC 167B SERPUKHOV (NR) 54 55 N 37 25 E

50X1-HUM



USSR WAC 167B SERPUKHOV (NR) 54 55 N 37 25 E

50X1-HUM



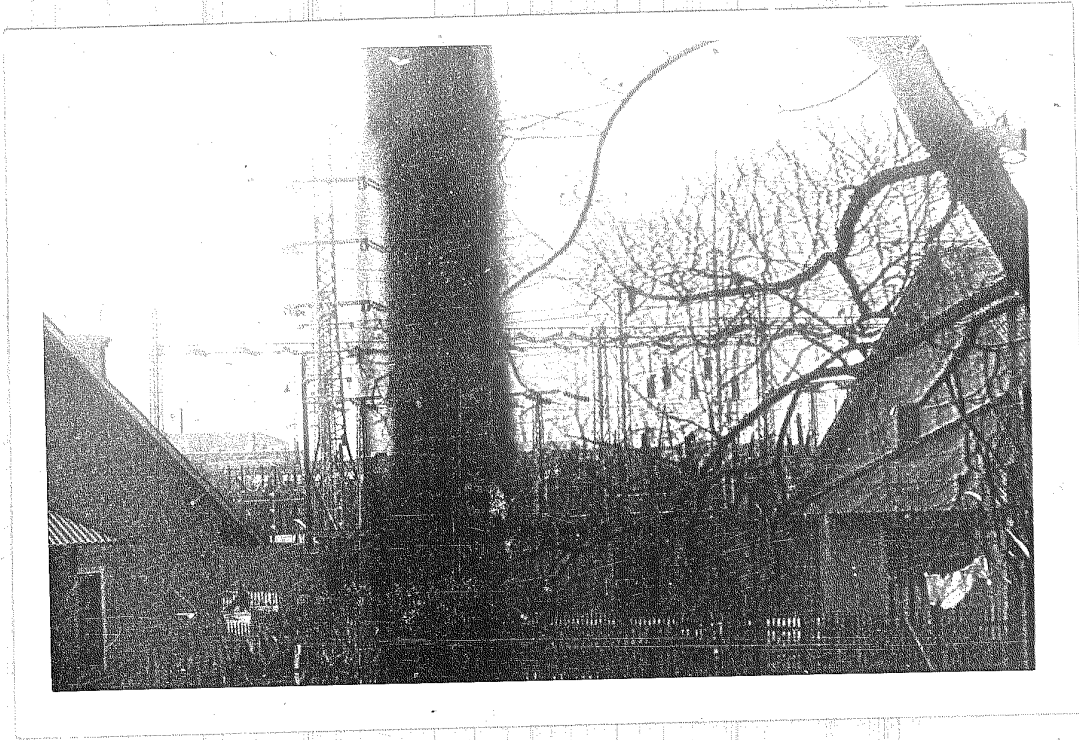
USSR WAC 167B SERPUKHOV (NR) 54 55 N 37 25 E

50X1-HUM



USSR WAC 167B SERPUKHOV (NR) 54 55 N 37 25 E

50X1-HUM



USSR WAC 167B KLIMOVSK (NR) 55 22 N 37 32 E

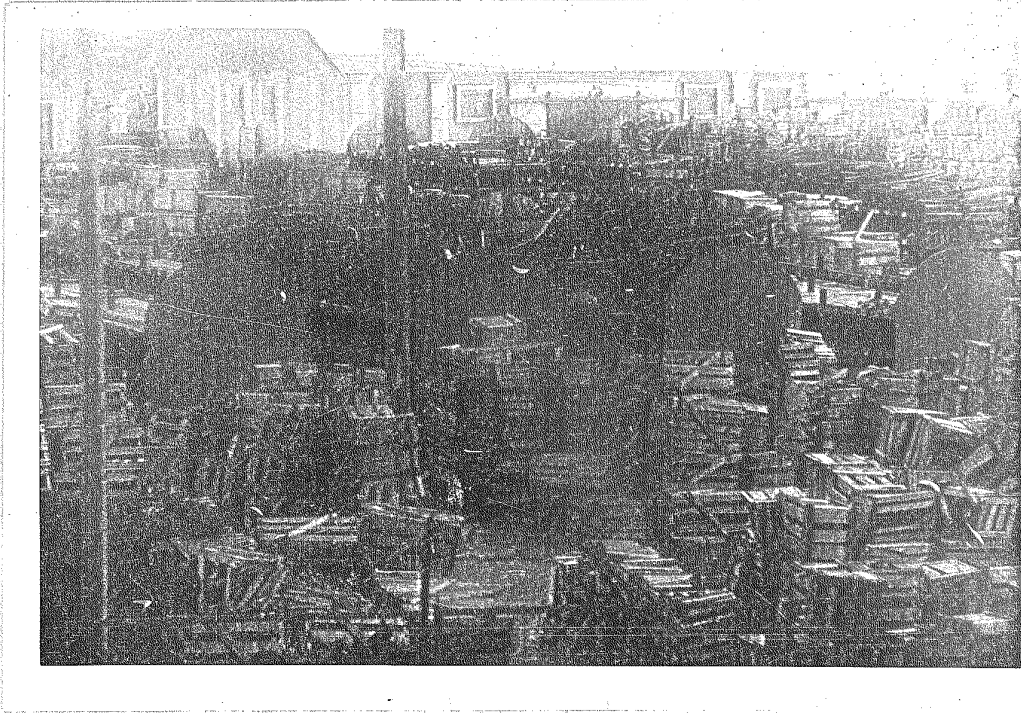
50X1-HUM



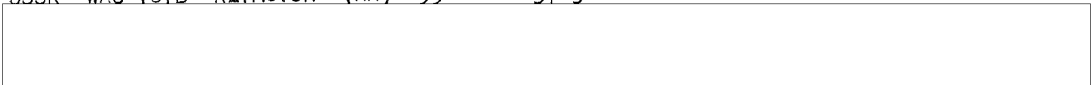
USSR WAC 167B KLIMOVSK (NR) 55 22 N 37 32 E

50X1-HUM

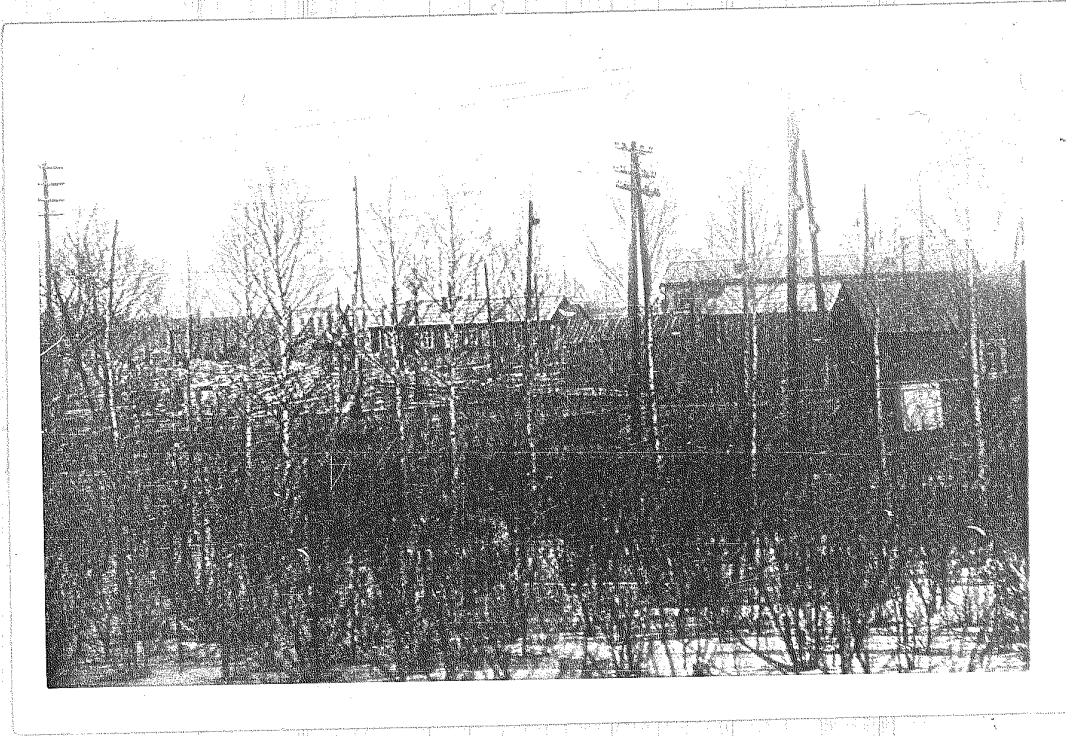




USSR WAC 167B KLIMOVSK (NR) 55 22 N 37 32 E



50X1-HUM



USSR WAC 167B KLIMOVSK (NR) 55 22 N 37 32 E

50X1-HUM



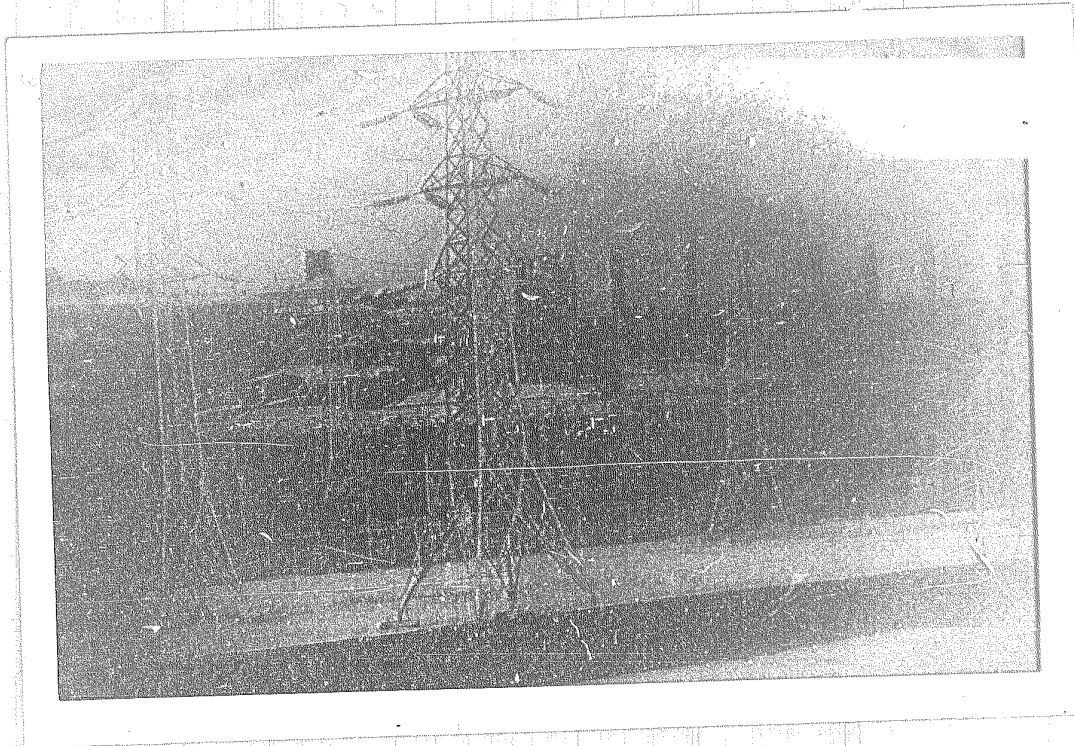
USSR WAC 325D TBILISI 41 42 N 44 45 E

50X1-HUM



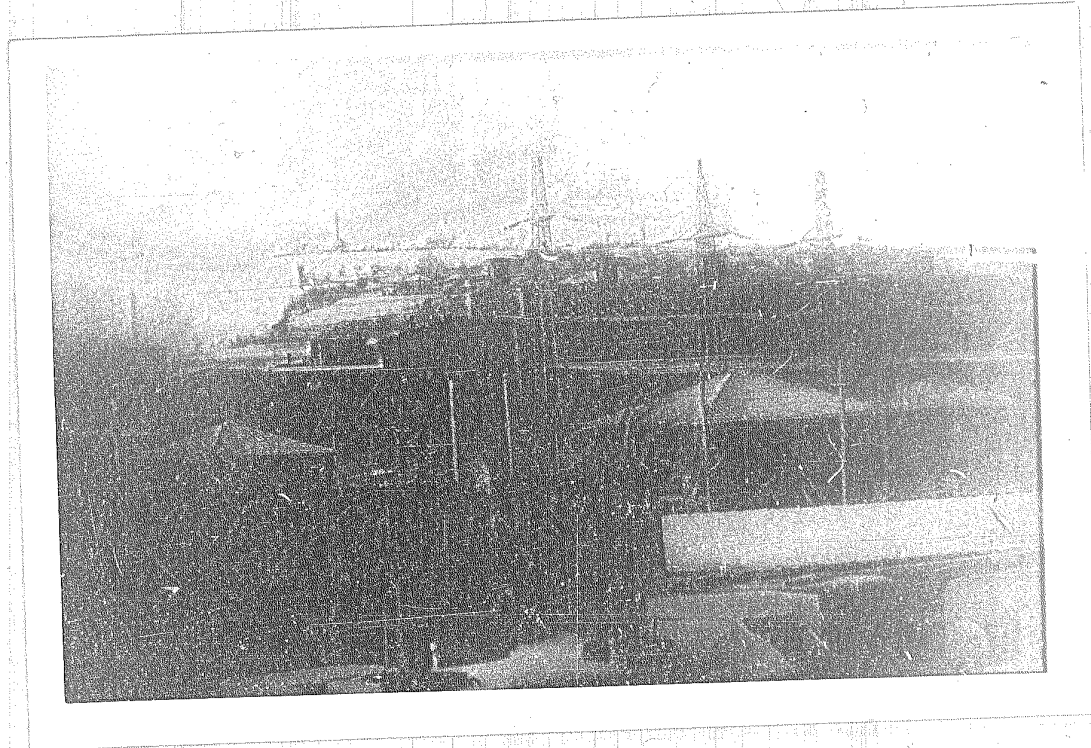
USSR WAC 325D TBILISI 41 42 N 44 45 E

50X1-HUM



USSR WAC 325A ZESTAFONI 42 07 N 43 03 E

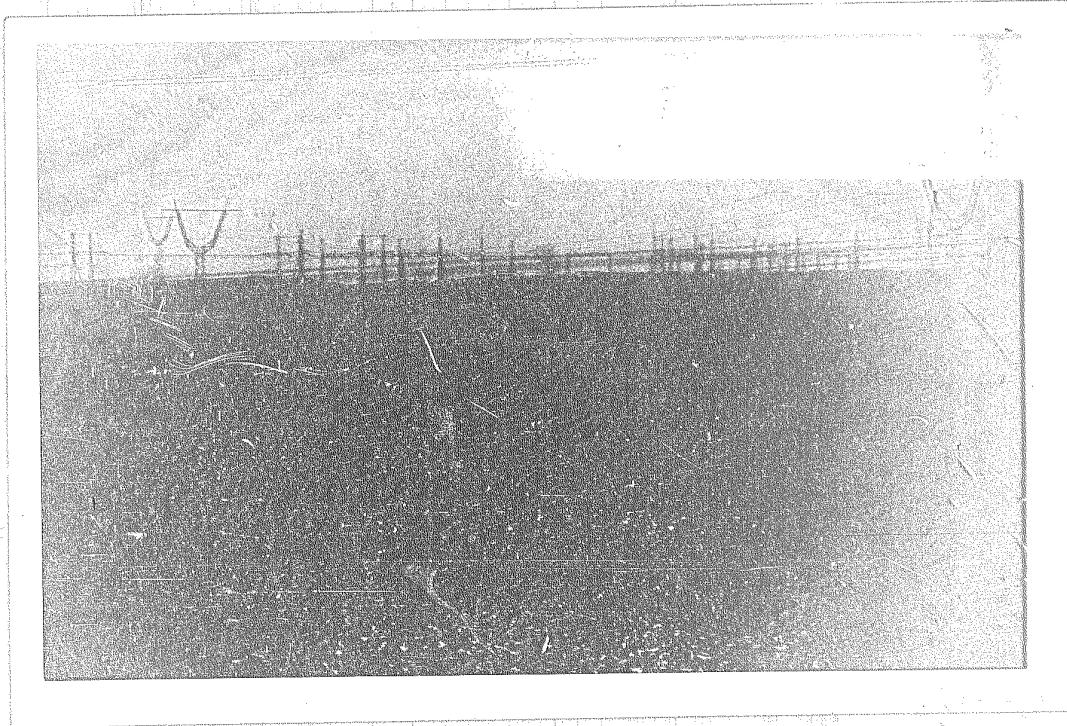
50X1-HUM



USSR WAC 325A ZESTAFONI 42 07 N 43 03 E

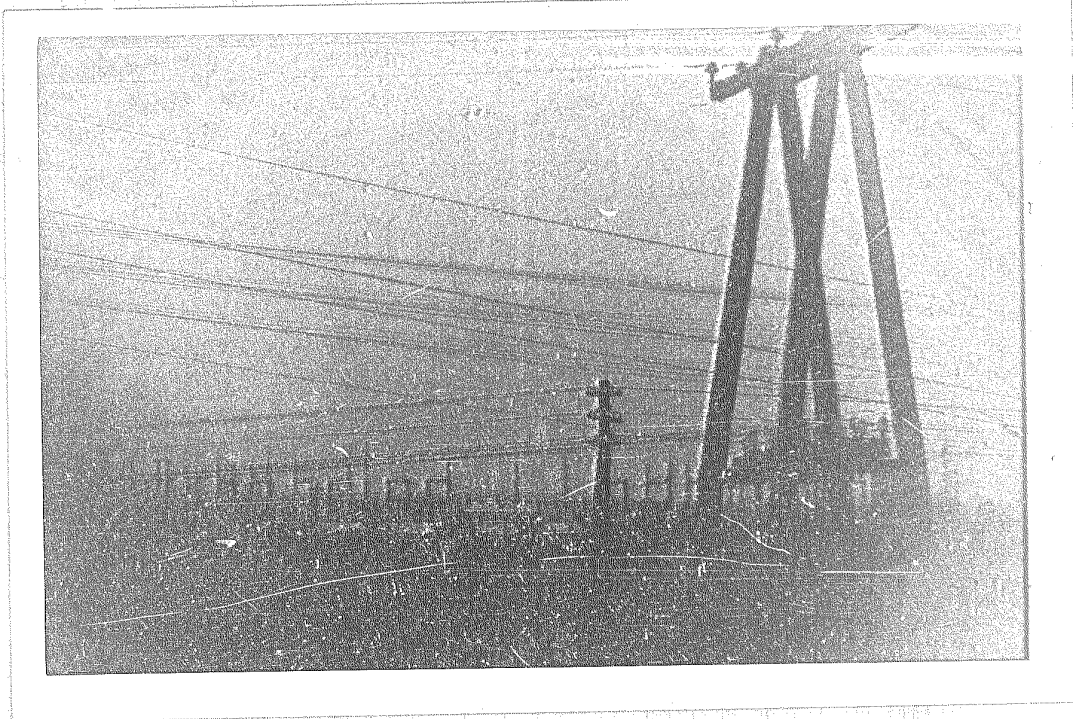


50X1-HUM



USSR WAC 324B KUTAI SI (NR) 42 15 N 42 40 E

50X1-HUM



USSR WAC 224B KITAISI (NR) 42 15 N 42 40 E

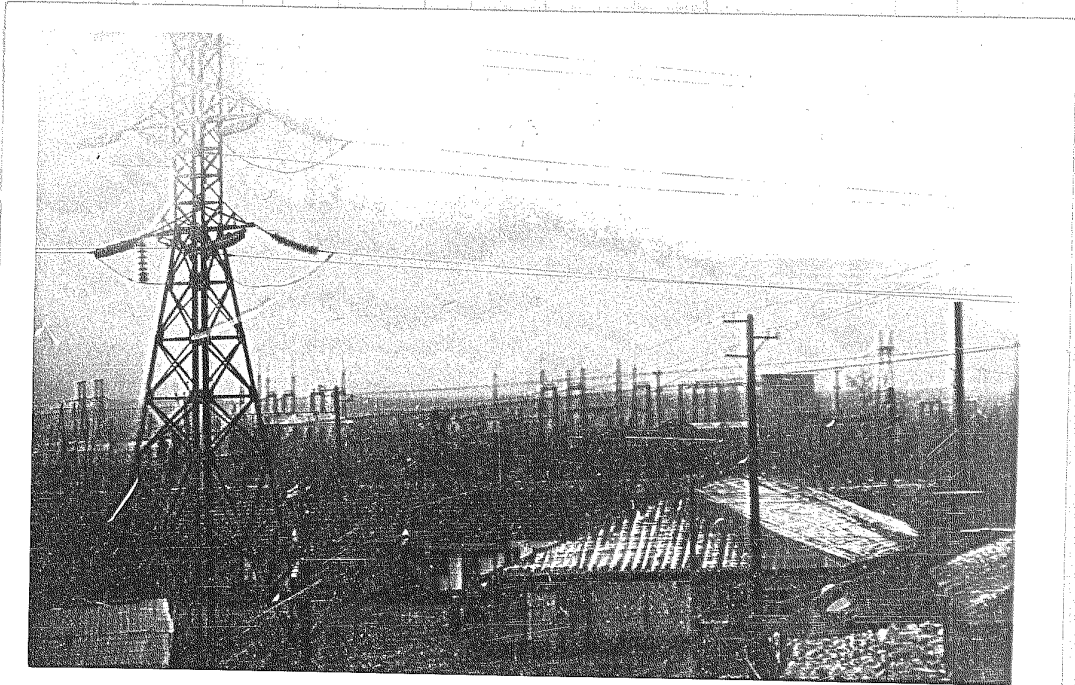
50X1-HUM





USSR WAC 325D TBILISI 41 12 1947

50X1-HUM



USSR WAC 324B KUTALSI (NR) 42 15 N 102 10 E

50X1-HUM

50X1-HUM

**Page Denied**

Next 21 Page(s) In Document Denied