

# INFORMATION REPORT INFORMATION REPORT

## CENTRAL INTELLIGENCE AGENCY

This material contains information affecting the National Defense of the United States within the meaning of the Espionage Laws, Title 18, U.S.C. Secs. 793 and 794, the transmission or revelation of which in any manner to an unauthorized person is prohibited by law.

S-E-C-R-E-T

50X1-HUM

COUNTRY	Rumania	REPORT	
SUBJECT	Miscellaneous Information on the Baia Mare, Rumania	DATE DISTR.	27 September 1960
		NO. PAGES	7
		REFERENCES	RD
DATE OF INFO.			50X1-HUM
PLACE & DATE ACQ.			50X1-HUM

SOURCE EVALUATIONS ARE DEFINITIVE. APPRAISAL OF CONTENT IS TENTATIVE.

- Baia Mare is the capital of the province of the same name. Baia Mare province consists of the following districts: Somcuta Mare, Satu Mare, Sighet, Viseul De Sus, Iasi, Carei Mare, Cehul Silvanietii, Tasnad and Tirgul Lapus. With the exception of Iasi, whose capital is Negresti, the names of all these districts are identical with those of their respective capital cities.
- The city of Baia Mare is about 75 kilometers from the Hungarian frontier and about 65 kilometers from the Soviet frontier. Its population numbers 40,000, equally divided between inhabitants of Rumanian and Hungarian origin; in 1946, the population was only 20,000. The growth of Baia Mare is due in part to the increased exploitation of the 16 non-ferrous metals mines in and around the city, the expansion of the Gheorghe Gheroghiu-Dej (formerly Phoenix) Chemical Combine and the establishment of the city as the provincial capital.
- The following are streets whose names have been changed:

<u>Old name</u>	<u>New Name</u>
Piata Finului	Piata I.C. Frimu
Strada F.D. Roosevelt	Strada 21 Decembrie
Unknown	Strada 1 Mai
Unknown	Strada Malinovski
Unknown	Strada 17 Noembrie
Unknown	Strada 6 Martie

ACIC

50

S-E-C-R-E-T

50X1-HUM

STATE	X	ARMY	X	NAVY	X	AIR	X	NSA	X	FBI					
(Note: Washington distribution indicated by "X"; Field distribution by "#")															

# INFORMATION REPORT INFORMATION REPORT

S-E-C-R-E-T

50X1-HUM

- 2 -

50X1-HUM

<u>Old Name</u>	<u>New Name</u>
New street	Strada Progresului
Strada Morii	Strada Iustin Georgescu

4. Public institutions in Baia Mare are located as follows:

- a. The Provincial Council is located on the right side of Strada 6 Martie when coming from downtown. The buildings it occupies are former barracks.
- b. The Municipal Council is on Strada Malinovski. It occupies the former city hall, a two-story building.
- c. The Provincial Securitate is located on the right side of Strada 21 Decembrie and before the Provincial Party Committee when coming from Piata I.C. Frimu. It occupies one large, three-story building and about five small buildings that were constructed around 1954. The compound is separated from the street by a concrete wall 50 to 60 cm. high and topped with a railing about 70 cm. high.
- d. The Provincial Militia is in a ~~larger two-story building, on Strada~~ Tinereului, behind Strada Iustin Georgescu, which was formerly occupied by the city garrison commandant.
- e. The City Militia is in a former private residence, one story high, on Calea 23 August at the corner of Strada Petofi.
- f. The city, provincial and military courts and the notary public's office are located in the old law court on the left side of Strada Crisan when coming from downtown.
- g. The city and provincial prosecutors' office is located in a new three-story building on the right side of Strada 1 Mai when coming from downtown. The building was completed at the beginning of 1960.
- h. The Collective Office for Legal Advice is opposite the law court.
- i. There is no prison in Baia Mare; the closest prisons are in Satu Mare and Sighet. Persons held for questioning by the authorities are confined in the Securitate and the prosecutors' buildings.
- j. At the beginning of 1960, the post and telegraph offices and the telephone exchange were still in the old building on the right side of Calea 23 August when coming from downtown. During the first half of 1960, they are to be moved to the new building which is on the right side of Strada 17 Octombrie when coming from downtown and is parallel to Strada Tinereului. This building, which is very large, has four stories and stands about 10 meters from the street. After the exchange is moved, the semi-automatic telephone equipment will be replaced by fully automatic equipment.
- k. The amplifier station is on Calea 23 August opposite the old post office.
- l. The jamming station is believed to be situated in one of the Securitate buildings.

S-E-C-R-E-T

50X1-HUM

S-E-C-R-E-T

50X1-HUM

- 3 -

50X1-HUM

5. The organizations of the Rumanian Workers Party are located as follows:
  - a. The Provincial Party Committee and the Provincial UTM offices are located in a large, three-story building on Strada 17 Octombrie at the corner of Strada 21 Decembrie, which formerly housed the Mining School. The offices of Pentru Socialism and Faklya, the Rumanian and Hungarian language organs respectively of the Provincial Party Committee and the Provincial Council, also occupy this building.
  - b. The City Party Committee and the City UTM offices are in a three-story building on Strada 17 Octombrie at the corner of Strada Nicolae Titulescu.
  - c. The Provincial Trade Union Council is in an old two-story building on Strada Mihai Viteazul, above the I.C. Frimu Cinema.
6. Military installations in Baia Mare are located as follows:
  - a. The provincial military commissariat is in a large, two-story building on the left side of the passage from Piata Libertatii to Piata Maxim Gorky and Strada I. Mai.
  - b. The city military commissariat is in a two-story former private residence opposite the provincial commissariat.
  - c. The fire brigade is quartered in barracks on the left side of Strada Malinovski when coming from downtown. The barracks previously housed a Frontier Guard regiments which was transferred to Sighet.
  - d. An underground air raid shelter for senior army officers and local Party and government officials is situated about 60 meters from the corner of Piata Nicolae Iorga and Strada Avram Iancu. A two-story building with an observation post on it stands above the shelter and the area is surrounded by a high concrete wall. According to rumor, the shelter is connected by an underground passage to the Securitate and the Provincial Party Committee offices.
7. Industrial establishments in Baia Mare are located as follows:
  - a. The Petru Gheorghe plant for the processing of non-ferrous ores is on the right side and at the end of Strada Victoriei when coming from the city. It employs about 4,000 workers. A technical secondary school for mining is located within the plant's compound and the workers' quarters are approximately one kilometer away.
  - b. The central garages of the Mining Trust are located at 73 Strada Grivitei, the site of the former gold and non-ferrous ores processing plant.
  - c. The former Firiza smelting works is now known as the 1 Mai smelting works and is located in the village of Ferneziu which is administratively part of Baia Mare. [redacted] the 1 Mai and the Gheorghe Gheorghiu-Dej plants export close to 200 tons of ores daily to the USSR. The 1 Mai works employs between 2,000 and 2,500 workers.

50X1-HUM

S-E-C-R-E-T

50X1-HUM

S-E-C-R-E-T

50X1-HUM

- 4 -

50X1-HUM

- d. The Mining Trust offices are on the left side of Strada Jozsa Bela when coming from downtown. The trust employs approximately 40,000 workers in 16 mining enterprises that include several gold, silver, copper, lead, zinc, etc., mines, which are no longer worked. Reportedly, some of the mines such as the non-ferrous metals mines at Valea Rosie and the mines at Baia Sprie, Cavnice, Strimbu Baiut, Nistru, Baita, Valea Borcut, Jerapan, Borsa, Ilba and Herja will reopen shortly.
  - e. The central workshops for the repair of the trust's mining equipment are located on the right side of Strada Malinovski when coming from downtown, several tens of meters before the beginning of the highway to the village of Ferneziu.
  - f. The Gheorghe Gheorghiu-Dej chemical plant is situated north of the railroad tracks and immediately past the Fabrica railroad station. It occupies a very large area, stretching almost to Strada Horea, and employs 4,000 workers in three shifts. It includes a smelting plant and produces more than 40 chemical products including tanning substances, such as Vicromat.
  - g. In 1951-1952, a group of [ ] engineers erected a large power station on the left side of the highway leading to Ferneziu. 50X1-HUM
  - h. The old power station is located on the left side of Strada Mihail Eminescu when coming from Piata I.C. Frimu.
  - i. The Petru Nicolae and Gheorghe Gheorghiu-Dej plants maintain their own power stations.
  - j. Baia Mare was linked to the national electric grid in mid-1959 and apparently receives its current from the hydro-electric station at Bicaz, which is not yet in full operation. Baia Mare still suffers from power failures because the transformers on the poles in the streets are very old and therefore, particularly during the rainy season, break down frequently.
  - k. The bakery, which supplies all the city's baked goods, is located on both sides of Strada Mihail Eminescu.
  - l. The Ferometal plant for the production and repair of work implements is situated on the left side of Strada Mihail Eminescu when coming from downtown. It employs about 400 workers.
8. Educational and medical institutions are located as follows:
- a. A co-educational secondary school is located on the left side of Strada 17 Octombrie and after Strada Andrei Muresanu when coming from Piata Libertatii. In 1959, a new building was added to the school to house a department in which language of instruction is Hungarian. Simultaneously, the separate Hungarian-language school was closed.
  - b. A technical secondary school for mining is located within the compound of the Petru Gheorghe plants.
  - c. The state hospital occupies the building of the former Social Insurance hospital on the right side of Strada Malinovski when coming from

S-E-C-R-E-T

50X1-HUM

S-E-C-R-E-T

50X1-HUM

- 5 -

50X1-HUM

downtown. It is a four-story building and contains the usual wards with the exception of contagious diseases, TB and maternity wards.

- b. The contagious diseases hospital, the blood bank and the Sanepid offices are located on the right bank of the Sasaru River and after the bridge which spans it when coming from downtown.
  - c. The TB hospital and clinic occupy a number of single-story houses between Petofi and Valea Rosie Streets.
  - d. The children's hospital is behind the state hospital.
  - e. A large four-story clinic for adults was built on Strada Progresul opposite Strada Avram Iancu in 1954-1955. The maternity hospital is on the top floor.
9. Hotels, restaurants, theater and cinemas in Baia Mare are located as follows:
- a. A very large building bounded by Strada 17 Octombrie, Strada Teathului, Piata Libertatii and Piata Pacii contains:
    - 1) The Ardealul hotel
    - 2) The Ardealul restaurant
    - 3) The Minierul cinema, containing 710 seats
    - 4) The central government shops.
  - b. The Rumanian and Hungarian State Theater is located on a small street between Strada Crisan and Piata Pacii. Since the Hungarian theater moved to Satu Mare early in 1960, the Rumanian-language productions predominate. The theater can seat 400.
  - c. The Flacara cinema, with about 300 seats, is behind the Provincial Militia.
  - d. The I.C. Frimu cinema, with a capacity of 300, was erected on Strada Mihai Viteazul in 1959.
  - e. There is a cinema in the village of Ferneziu.
  - f. Another cinema is situated within the compound of the Petru Gheorghe plant.
10. Transportation facilities
- a. A civilian airfield was built near the village of Recea around 1950. Two or three flights leave daily for Cluj, Tirgu-Mures and Bucharest.
  - b. The IRTA bus terminal is on a little street opposite the Provincial Council. There are four bus lines in Baia Mare:
    - 1) Piata Libertatii - Strada 17 Octombrie - Strada 6 Martie and return;

S-E-C-R-E-T

50X1-HUM

S-E-C-R-E-T

50X1-HUM

- 6 -

50X1-HUM

- 2) Piata Libertatii - Strada Malinowski - the village of Ferneziu and return;
  - 3) Piata Libertatii - Calea 23 August - Strada Victoriei - Uzinele Petru Gheorghe - the village of Valea Borcut and return;
  - 4) Piata Libertatii - Strada Crisan - Strada Closca - Piata I.C. Frimu - Strada Mihail Eminescu and return.
- c. Baia Mare has three railway stations:
- 1) The large station on Strada 6 Martie, located almost opposite the Provincial Council;
  - 2) The small station, for passengers only, located north of the railway tracks just before Piata I.C. Frimu;
  - 3) The Fabrica station, just before the Gheorghe Gheorghiu-Dej chemical plant.
- d. Details of the train schedule are as follows:
- 1) There are four trains daily in both directions on the Satu Mare - Baia Mare - Oradea line.
  - 2) The daily express to Dej, Cluj and Bucharest leaves Baia Mare at 1600 hours and the return train arrives at Baia Mare in the morning.
  - 3) There are two trains daily in both directions between Baia Mare and Cehul Silvaniei.
  - 4) There is one train daily in both directions between Baia Mare and Jibou.
11. The following are members of the security and Party organs in Baia Mare:
- 50X1-HUM
- a. Daszkal, fnu, [redacted] a blacksmith by trade. Daszkal [redacted] He was demoted to the post of personnel director of the Provincial Council in 1959. The First Secretary of the Provincial Party explained this move by claiming that Daszkal was vitally needed to put the Council's personnel matters in order. [redacted]
- 50X1-HUM
- b. Retezaru, Lt. Col., [redacted] Retezaru is second in command of the Provincial Securitate. [redacted]
- 50X1-HUM
- c. Hretianu, Major, [redacted] political deputy of the Provincial Securitate since 1952, [redacted]

S-E-C-R-E-T

50X1-HUM

50X1-HUM

S-E-C-R-E-T

50X1-HUM

- 7 -

50X1-HUM

- d. Stern, Captain Ludovic, [redacted] He is in charge of the Provincial Securitate's lock-up. [redacted]

50X1-HUM

- e. Szasz, Colonel fnu, [redacted] Commanding officer of the Provincial Militia since 1954. [redacted]

50X1-HUM

- f. Coca, Major fnu, [redacted] He has been director of the economic department of the Provincial Militia since 1954 or 1955. [redacted]

50X1-HUM

- g. Orban, Captain fnu, [redacted] Director of the gold and foreign currency section in the Provincial Militia. [redacted]

50X1-HUM

- h. Petrut, fnu, [redacted] Chief provincial prosecutor since 1951-1952. [redacted]

50X1-HUM

- i. Iosif, fnu, [redacted] president of the Provincial Court since 1951-1952. [redacted]

50X1-HUM

- j. Ulgar, Iosif, [redacted] He has been First Secretary of the Provincial Party Committee since c. 1954. [redacted]

50X1-HUM

- k. Medvesan, [redacted] Second Secretary of the Provincial Party Committee since around 1953-1954. [redacted]

50X1-HUM

- l. Low, Paul, [redacted] Third Secretary of the Provincial Party Committee. [redacted]

- m. Pope, Gheorghe, [redacted] Chairman of the Provincial Council since about 1954. [redacted]

12. [redacted] a town plan with legend showing the location of the various installations mentioned in the above report. [redacted]

50X1-HUM

S-E-C-R-E-T

50X1-HUM

SECRET

1. SASARU River.
2. Large railway station.
3. Small railway station (HALTA).
4. "FABRICA" Railway station.
5. PIATA I.C. PRIMU.
6. STRADA VASILE ALECSANDRI.
7. STRADA MIRAIL EMINESCU.
8. STRADA TRENULUI.
9. STRADA 21 DECEMBRIU.
10. GHEORGHE GHEORGHIU-DEJ Chemical Plant.
11. STRADA 1 MAI.
12. STRADA CLOSCA.
13. STRADA HOREA.
14. STRADA MALINOVSKI.
15. STRADA 17 OCTOMBRIE.
16. STRADA 6 MARTIE.
17. PIATA LIBERTATII.
18. PIATA PACII.
19. STRADA SIMION BARNUTIU.

./.



**SECRET**

50X1-HUM

20. STRADA CLARILOR.
21. PIATA MAXIM COREY.
22. CALRA 23 AUGUST.
23. STRADA VICTORIEI.
24. STRADA CRISIN.
25. STRADA ANDREI MURESAN.
26. STRADA JOKAY MOR.
27. STRADA PROGRESUL.
28. STRADA AVRAM IACOB.
29. PIATA NICHOLAS IORGA.
30. STRADA TEATRULLII.
31. STRADA STALINGRAD.
32. STRADA JOZSA BELA.
33. PIATA VICTORIEI.
34. STRADA IUSTIN GEORGESCU.
35. STRADA LACATUSULUI.
36. STRADA CRISULUI.
37. STRADA LENDVAI.
38. 23 AUGUST Quarter (CARTIERUL) formerly DEADEL CRULII.
39. STRADA PETOFI.
40. PARCUL DIMITROV.
41. STRADA VALEA ROSIE.
42. 23 AUGUST sports stadium.

**SECRET**

50X1-HUM

**SECRET**

OFFICE OF THE PROVINCIAL PARTY COMMITTEE  
PROVINCIAL NEWSPAPER, "DUMTRU SOCIALISM" (Romanian-language  
organ) and "PAKLYA" (Hungarian-language organ).

44. Provincial SECURITATE.
45. STRADA TINERETULUI.
46. Provincial Militia.
47. Provincial Council.
48. Municipal Council.
49. City Militia.
50. STRADA NICOLAE TITULESCU.
51. City Party Committee and City URM Offices.
52. Military, provincial and city courts and security public's office.
53. Provincial and city prosecutors' offices.
54. Collective Office for Legal Advice.
55. Old post and telegraph office and telephone exchange.
56. New post and telegraph office and telephone exchange.
57. State bank.
58. Amplifier station.
59. Provincial military commissariat.
60. City military commissariat.
61. Fire brigade.
62. Air-raid shelter.
63. PETRU STESCU Plant.
64. Co-educational secondary school.
65. Adults' clinic and maternity hospital.

**SECRET**

50X1-HUM

**SECRET**

66. State Hospital.
67. Children's clinic.
68. Contagious diseases hospital, blood bank and SANEPID offices.
69. TB hospital.
70. MINIERUL cinema, ARDEALUL hotel; ARDEALUL restaurant and central government shops.
71. Russian and Hungarian State Theatre.
72. FRACARA cinema.
73. Omitted on map.
74. I.O. PRINU cinema.
75. Provincial T.U. Council.
76. STRADA GRIVITEI.
77. Central garages of the Mining Trust.
78. Mining Trust offices.
79. 1 MAI smelting plant (formerly FIBRIZ).
80. Central workshops for the repair of mining equipment.
81. Gold, silver, copper, zinc, etc. mines which are not exploited now. (Approximate locations).
82. STRADA OVNEI.
83. VALEA ROSIE mines.
84. IRTA bus depot.
85. Bakery.
86. FEROMETAL plant.
87. Civilian airfield.

**SECRET**

50X1-HUM

./.

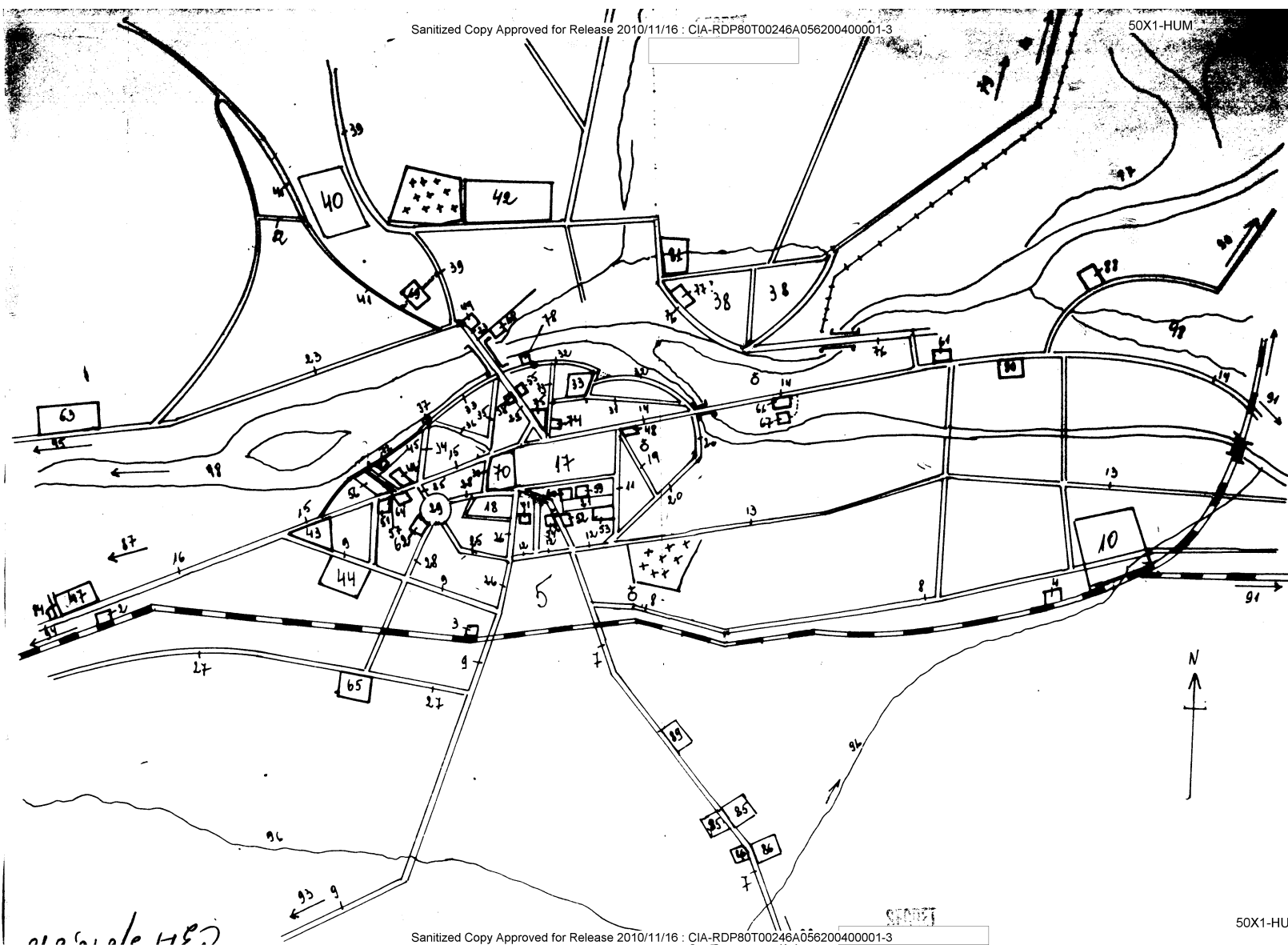
SECRET

- 88. New power station.
- 89. Old power station.
- 90. To the villages of FERNEZIU and HERJA.
- 91. To HERJA SPRING.
- 92. To the village of GHOSI.
- 93. To the village of SATUL NOU.
- 94. To the town of LADUSEL.
- 95. To ILDA-SICARLAU.
- 96. BODAI River.
- 97. FIRICKEL River.
- 98. SASANU River.

SECRET

50X1-HUM

50X1-HUM



Sanitized Copy Approved for Release 2010/11/16 : CIA-RDP80T00246A056200400001-3

50X1-HUM