

**INFORMATION REPORT INFORMATION REPORT**

**CENTRAL INTELLIGENCE AGENCY**

This material contains information affecting the National Defense of the United States within the meaning of the Espionage Laws, Title 18, U.S.C. Secs. 793 and 794, the transmission or revelation of which in any manner to an unauthorized person is prohibited by law.

S-E-C-R-E-T

50X1-HUM

COUNTRY USSR

REPORT

SUBJECT 1. Naval Vessels Sightings and Port Observations in Nakhodka  
2. Soviet Arctic Shipping Practices

DATE DISTR. 31 March 1960

NO. PAGES 1

REFERENCES

50X1-HUM

DATE OF INFO.

PLACE & DATE ACQ

50X1-HUM

SOURCE EVALUATIONS ARE DEFINITIVE. APPRAISAL OF CONTENT IS TENTATIVE

three reports on naval vessel sightings and other observations in Nakhodka, and Soviet Arctic shipping practices

50X1-HUM

Att.No. Subject

1.

naval vessel sightings in Nakhodka during the period including: two possible OTLICHNYY-class destroyers

50X1-HUM

16 submarines

one MTB

Also included are observations on: submarine exercises; a submarine base; jet aircraft activity; a dry dock with 6,000 to 7,000 GRT capacity; and other miscellaneous port information. Attached is a sketch of the port area.

50X1-HUM

2.

observatons made in Nakhodka during Included are general comments on living conditions and public attitudes, and ship loading facilities and procedures. Attached is a sketch of the port area and descriptive comments on piers, anchorages, industrial and residential areas, and miscellaneous city landmarks.

3.

usual Soviet shipping practices on the Nakhodka-Murmansk run Also included is a sketch of the Nakhodka port area with comments on the general cargo pier, a coal pier, a new coal pier under construction, and harbor buoys.

50X1-HUM

S-E-C-R-E-T

50X1-HUM

STATE	X	ARMY	X	NAVY	X	AIR	X	NSA	X	FBI		NIC	X		
CINCPAC # ARPAC # PACAF # PACFLT #															
(Note: Washington distribution indicated by "X"; Field distribution by "#")															

**INFORMATION REPORT INFORMATION REPORT**

Sanitized Copy Approved for Release 2010/08/23 : CIA-RDP80T00246A053300240001-3

50X1-HUM

**Page Denied**

Next 3 Page(s) In Document Denied

Sanitized Copy Approved for Release 2010/08/23 : CIA-RDP80T00246A053300240001-3

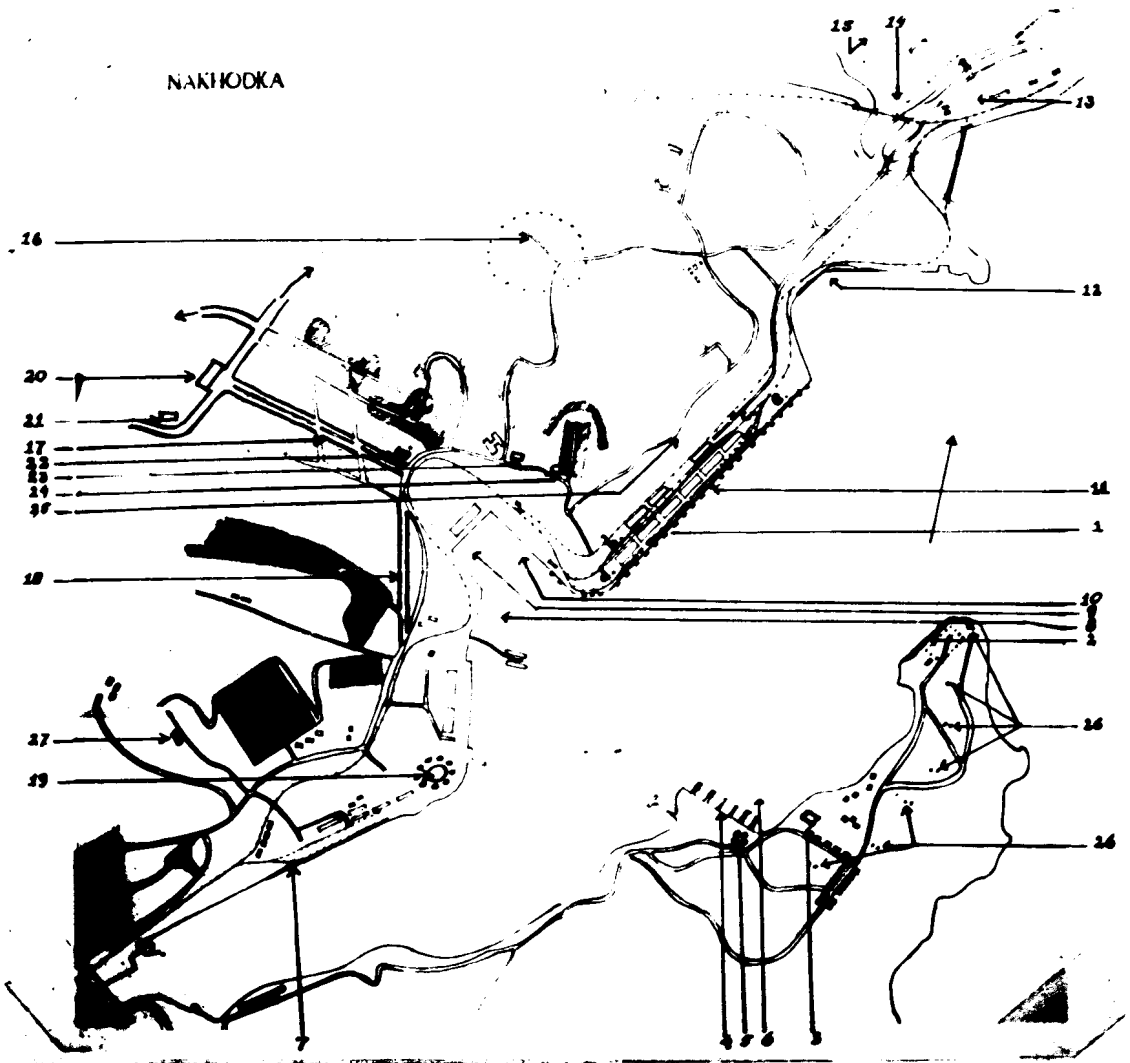
NAKHODKA

I

50X1-HUM

SECRET

SECRET





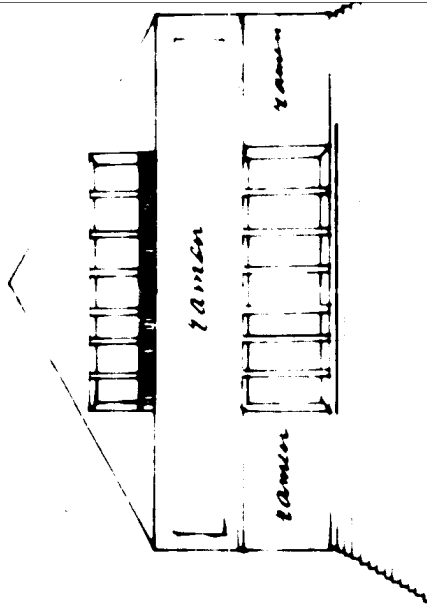
**II**

**SECRET**

50X1-HUM



50X1-HUM

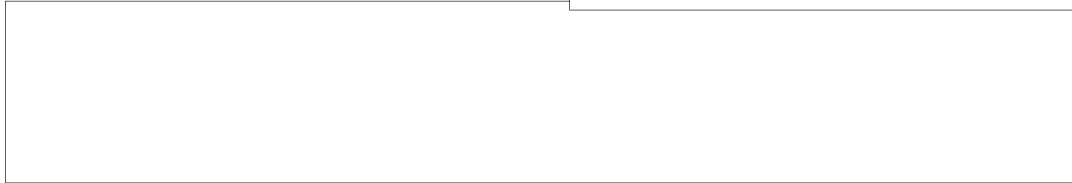


**SECRET**



50X1-HUM

**SECRET**



50X1-HUM

Russia

Maritime/Military and political

Harbor installations etc. of Nakhoda harbor



50X1-HUM

1 harbor ~~sketch~~ sketch of Nakhoda and object index pertaining to it.

A. Harbor installations etc.

For this <sup>see</sup> sketch attached and object index pertaining to it.

B. City area

1. It is the intention of Nakhoda to make a city of about 120,000 inhabitants. One is already ~~\$\$\$~~ ~~\$\$\$\$~~ ~~on~~ ~~the~~ ~~way~~. Much activity is being unfolded in connection with the construction of new piers, industrial area, building of residences, construction of thoroughfares, etc. For this see among others points 14,16,17,18 sketch/object index attached. The shaded parts on the attached sketch are already completely built-up with residences of 1 and 2 stories. There is building where in the mountainous area any possibility at all for building ~~housing~~ housing exists.

**SECRET**



50X1-HUM

-2-

2. Forbidden area is the land to the north of the pier, point 11 on attached sketch. Reasons unknown.
3. Drinking water is of excellent quality and unlimited and obtainable without cost. 3 cranes were present on the pier, point 11 of sketch for supplying ships, also on the other piers water pipes are clearly present.

C. Contact with civil population.

1. The population is very friendly and obliging toward foreigners without falling into submissiveness.
2. In conversations on the field of politics it appeared that people in general dare more to utter their dissatisfaction than in 1958. Moreover it appeared that the attitude of the people with regard to those who wield authority was not as fearful anymore as in 1958. Example: Fishing in the vicinity of foreign ships is forbidden. In 1958 this was also done, but as soon as one of the guards approached the fishers ran away fast. Now they go away grumblingly after being threatened by the guard with a revolver.
3. The dock workers are of very poor quality, loutish and brutal. There is insufficient supervision and ~~no~~ one bothers little or not at all with the foremen. There is insufficient supervision and the foremen are not equal to their task. During the unloading the dock workers looked technically incompetent and played the most dangerous stunts with the dismantling of the grain shoots. The injudicious way of handling caused destruction of much wood. An iron support of a grain shoot was smashed. A few times the unloading was interrupted a few hours by rail cars not being on hand.  
The unloading of 10,000 grain [sic] lasted 11 days.

D. Loading and unloading

1. Was unloaded at point 1 of sketch
2. The unloading took place day and night in three shifts with 5 teams. Each team consisted of 7 men (namely 1 crane driver, 1 rope man, 3 men in the hold for unloading the grain and on shore 2 men by the rail cars in which the cargo was unloaded.
3. The grain was taken out of the hold with a grab, dumped into a hopper attached to the lifting crane and loaded via this hopper into open rail cars.
4. In total there were 8 such cranes present, of which 5 in use for unloading observer's ~~the~~ ship.
5. Many obstacles were encountered in unloading because the dockers and foremen spoke only Russian. Only the harbor master, pilots and the Inflat-agent and his assistants spoke or understood English or

50X1-HUM

-3-

50X1-HUM

## OBJECTS INDEX/ HARBOR INSTALLATIONS etc. of Nakhoda Harbor

50X1-HUM

2. Pier in construction. The plan is that the pier will be ready in 1960.  
 Purpose: Discharging-berth for coal and ore.  
 Dimensions: 300 x 70 meters. Before construction  
 rocks were blown up. were filled with  
 rubbish.

## NAVAL BASE

50X1-HUM

3. Factory buildings (a power station) Concrete, 3 to 4  
 large halls (each hall about 100 meters long and about 20 meters high.  
 One or two chimneys (no smoke) Presumably not yet in use.  
 Factory not yet present in 1958.
4. Six piers each 150 x 25 meters. In total mooring capacity for 16 submarines,  
 namely at each pier 2 submarines behind each other on both sides.  
 The port plan deviates from reality because the 2 eastern piers have been  
 extended and on the west side 2 piers were built on . All piers of even  
 length and even width.
5. Four oil tanks (about 10 m. high with a diameter of 15 to 20 meters)  
 SE of the 6 piers.
6. Anchorage for destroyers. Obviously no mooring possibility in the naval  
 base.
7. Pier and ~~sp~~ as it appears exclusively destined for fishing ships. No cranes,  
 a few small stone and wood sheds on the new part presumably for storage of  
 fishing-tackle and supplies for fishing ~~ships~~ ships. sticks out  
 Concrete pier and continuous to point A. At high tide/about 2 to 2½ m.  
 above the water level
8. Ship repair yard, at which floating dry dock, which has a receiving  
 capacity of 6000 to 7000 GRT.  
 for the scrap heap
9. Collection of old ~~ships~~ ships/among others, fishing ~~vessels~~ vessels, 2 old floating  
 cranes, an old suction-dredger.
10. New pier, has become ready along NW and NE sides of the harbor.  
 Concrete pier about ~~3 meters~~ sticking out about 3 meters above the  
 water level at high tide and about 40 meters wide. In the ~~part~~ part of the  
 For most

50X1-HUM

-4-

pier a shed (farther no sheds)

Eight riding cranes, lifting capacity of 6 cranes =  $1\frac{1}{2}$  tons and of 2 cranes = 5 tons each.

along the pier 2 or 3 rail lines.

11. Pier

No modifications observed in sheds.

About 20 lifting cranes with a lifting capacity of 5 tons and 1 crane with a lifting capacity of about 30 tons.

In an open ~~area~~ space at points b and c lay large quantities of old metal from dismantled propeller planes.

In an open space at point d ~~boxes~~ <sup>with</sup> machinery. Presumably already were there in 1958. Wood of the boxes ~~was~~ faded.

In an open space at point e. storage place for coal. This storage is being given up as the pier at point l of sketch becomes ready.

The ~~open~~ remaining open spaces ~~between~~ in front of, behind, and between the sheds are used for storage of wood (trees, beams, and planks). No shipments of wood observed.

12. Finished pier. (General cargo pier)

Concrete, length about 400 meters. No sheds. Four landing cranes with lifting capacity of 5 tons. Estimated depth along side the pier about 30 ft.

A ship of about 6000 GRT was unloaded along side the pier.

13. Presumably cement factory. A few tall square buildings, with a chimney on four of them. Day and night are worked. (at night illumination and smoke from the chimneys).

14. New industrial area. In this area last year many factory buildings arose (many new factory chimneys). Presumably also a stone and steel factory. No additional data.

15. New residential and industrial area.

In this area NNW of America Bay many explosions. The ground ~~was~~ made suitable for building dwellings and factories and construction of new roads.

The intention is that the Nakhoda/Amerikanka area spread to 120,000 inhabitants in 1960.

16. New large thouroufare in construction Suchan - Nakhoda - Amerikanka. In this area likewise explosions.



-5-

17. Newly constructed road and new residential quarter.  
Road about 20 meters wide, two lands with green median, asphalted.  
Shaded area on the sketch completely built up with new dwellings.
18. Newly constructed road  
About 12 meters wide, asphalted.  
In Nakhoda working very hard on road improvement. Many muddy roads in 1958; now almost all asphalted.
19. Amusement park. On top of a mountain about 200 meters high a dance floor with bowers all around. This point also suited as an observation point, in a NE and S direction.
20. Culture palace (see also sketch II) New concrete building, 3 stories. Large staircases to colonnades. On 2nd floor [European] likewise columns with built in balconies. Width 100 meters, depth 50 meters.
21. Civilian hospital. Concrete, 2 stories, 60 x 40 meters.
22. Building in which more harbor offices, also agency of INFLOT. Concrete, 2 stories.
23. Military casern. Concrete, 3 stories. At the buildings soldiers were observed dressed in uniforms completely like the frontier guard. No further information.
24. Movie theatre.
25. Excellent observation point over the harbor area.
26. Radio sending station, consisting of a series of ~~33333~~ masts standing 2 by 2.
27. Prison.

Sanitized Copy Approved for Release 2010/08/23 : CIA-RDP80T00246A053300240001-3

50X1-HUM

**Page Denied**

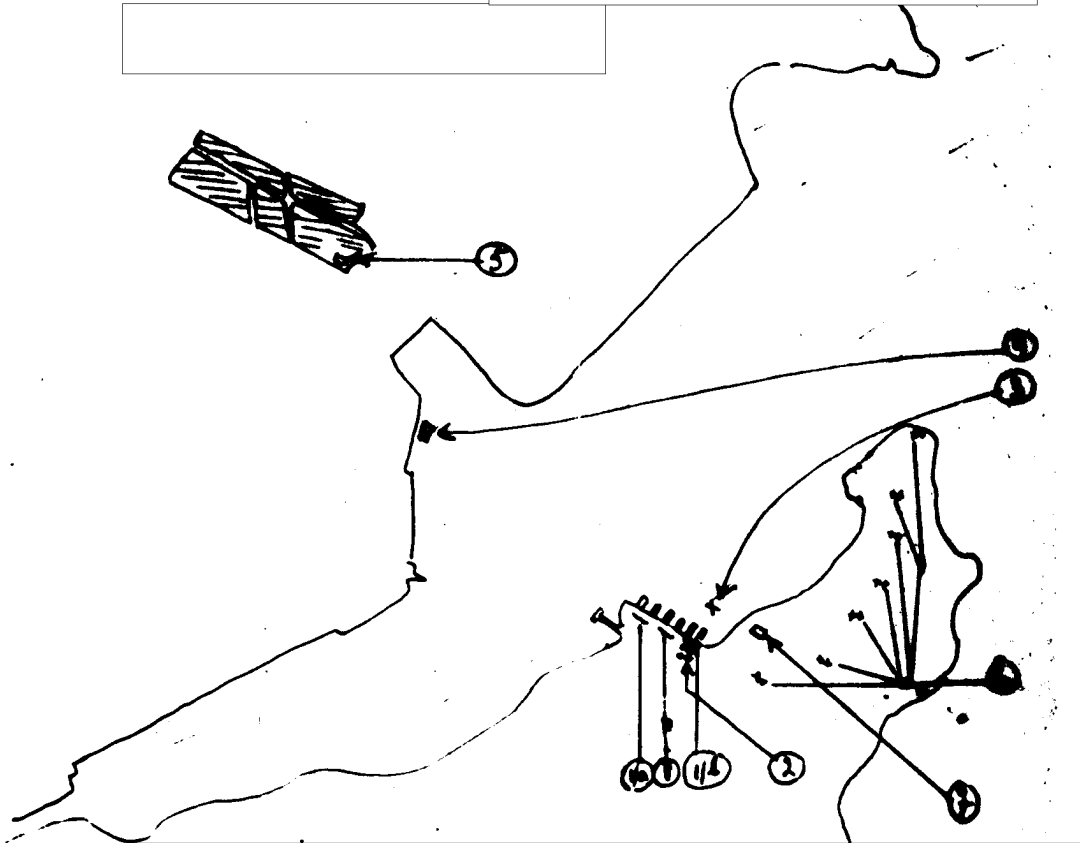
Next 2 Page(s) In Document Denied

Sanitized Copy Approved for Release 2010/08/23 : CIA-RDP80T00246A053300240001-3

~~SECRET~~ (Security restriction)

SECRET

50X1-HUM

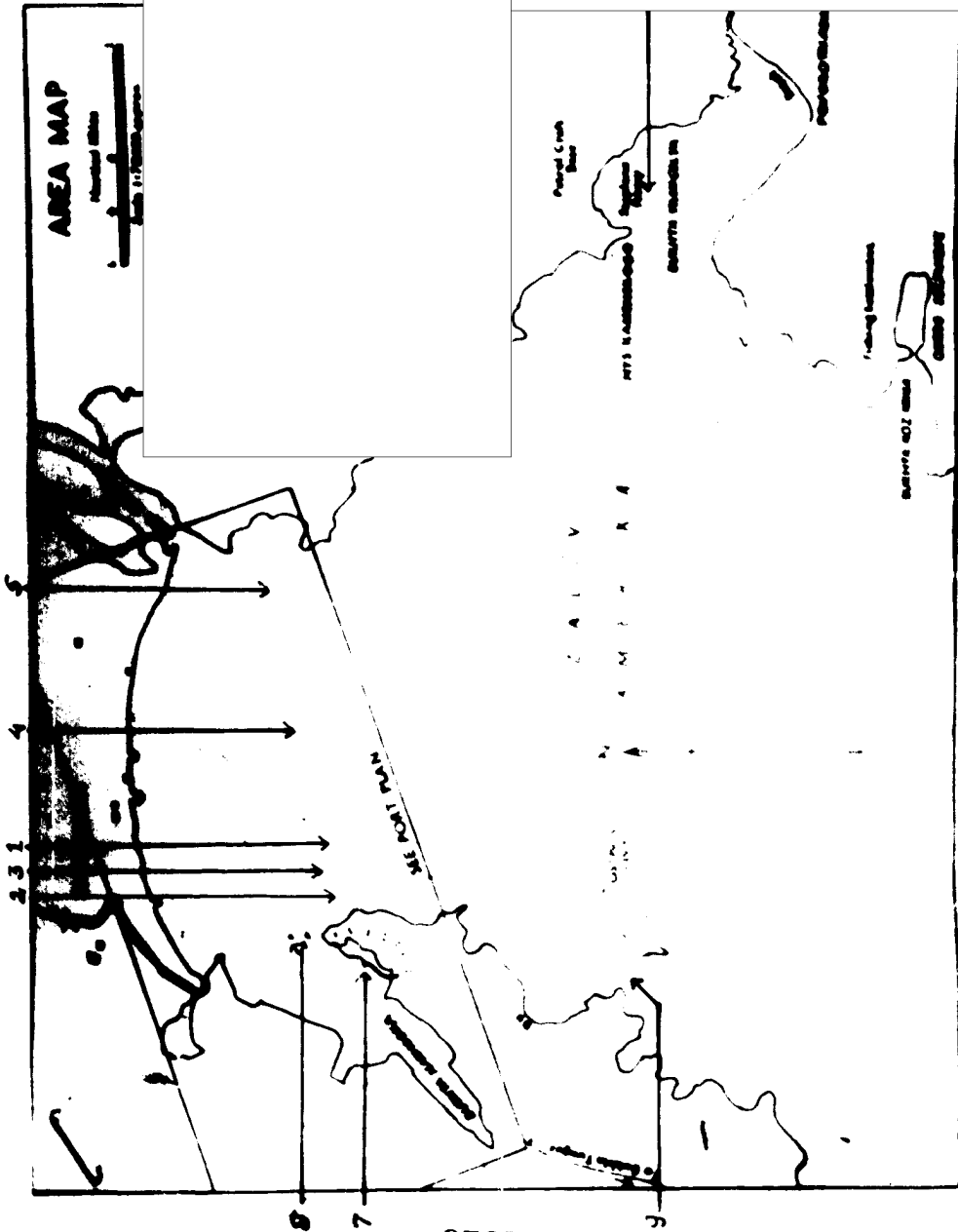


50X1-HUM

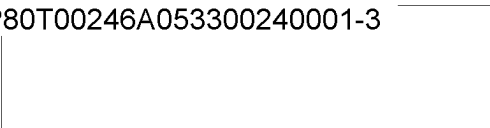
SECRET

50X1-HUM

SECRET



SECRET



**SECRET**

50X1-HUM



50X1-HUM

Russia

Maritime/Military

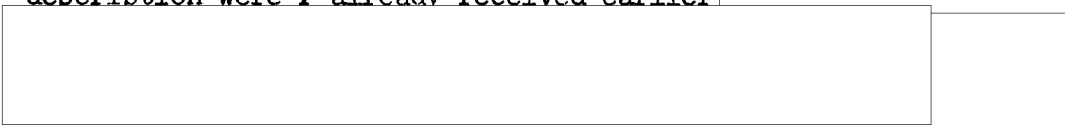
Naval vessels, military installations etc. of harbor of Nakhoda.



50X1-HUM

- 1. Sketch of Amerika bay
- 2. Sketch of Nakhoda bay

L. Photos of the harbor of Nakhoda, of naval vessels and a short description were ~~r~~ already received earlier



50X1-HUM

Maritime/military objects

1) Naval vessels observed:

2 destroyers  at points 2 and 5 sketch I

50X1-HUM

Amerika bay.  
Description:



Supplement: Presumably armament on board (however, was surrounded by crating ) Propulsion by steam-engines (oil-fired boilers for supplying steam.)

16 submarines, of which 4 regularly in Amerika Bay and 12 in the naval base (point 7 sketch I)

Description: Submarines observed at points 3 & 4 sketch I were Photographed.



50X1-HUM

**SECRET**



50X1-HUM

-2-

50X1-HUM

Supplement: All ships of the same type except 1 submarine of a larger type. No ~~deck armament~~ deck armament observed.

On the conning towers of the submarines

50X1-HUM

In misty weather and at dark 3 or 4 submarines always sailed out the harbor and picked an ~~anchorage~~ anchorage between Ostroy Lisiy and Mys Krylova, presumably to guard the entrance to Amerika Bay.

Exercises: Exercises were held daily by the submarines in Amerika Bay. Diving exercises, attack exercises, in which sometimes another submarine, sometimes a destroyer and also once observer's ship served as target. No torpedoes were seen launched. Exercises limited to ~~choosing~~ choosing positions of the submarines (visible by the foam streak of the periscope)

1 MTB, at point 5 of sketch I

50X1-HUM

MTB disappeared behind Kamsngogo cape.

MTB base presumably in Vrangelya bay (point 6 sketch I)

A few patrol vessels of which no further description, moored in the naval base (point 7 sketch I)

2) ~~Maritime/military objects~~  
Maritime/military objects

- a) Submarine naval base (point 7 sketch I and points 1,2 and 3 sketch 2)  
- point 1 sketch 2: Two westerly ~~piers~~ small piers extended to the length of two easterly piers, whereby the mooring capacity is increased.

At present mooring possibility for 16 submarines (on each side of each pier 2, behind each other)

Length of piers about 150 meters, width about 25 meters.

At the same time still 2 new piers ~~in construction~~ under construction to the east of the existing piers (at present thus 6 piers in ~~total~~ all)

- point 2 sketch 2: ~~Southeast~~ Southeast of the submarine base four small oil tanks (about 10 meters high with a diameter of 15/20 meters).  
- point 3 sketch 2: ~~no mooring place~~ <sup>Anchorage</sup> place for destroyers. ~~no mooring place~~ no mooring place present, in the base itself. Apparently

each

In the base still a few small patrol vessels lay. On ~~the~~ mountain tops ~~two~~ 2 radio masts ~~of~~ about 35 meters high ~~(see point 7 sketch I)~~ (see point 7 sketch I)

b) Military Objects

- 1) Air activity ~~is observed~~ in the day as well as at night. Exercises were with jet fighters and jet bombers. Airplanes flew very high, whereby

-3-

50X1-HUM

a description was not possible. Norm~~ally~~ <sup>it possible to deduce</sup> was the presence of an airfield ~~observed from the direction of the flying.~~

- 2) Guided missiles. No information
- 3) Communication material. Except for information point 7 sketch I (see above) no information.
- 4) Coastal defenses. No coast, ~~air defense~~ <sup>air defense</sup> batteries or radar apparatus observed. If present in the surroundings of Nakhoda bay or as the case may be ~~at~~ Amerika Bay then very well camouflaged.
- 5) Search lights: ~~7~~ A searchlight set up at both sides of the entrance to Amerika Bay. Exact position not known. From the ~~searchlights~~ <sup>searchlights</sup> at night observed that beams of light <sup>in or almost</sup> ~~in~~ joining in each other lit up the surface of the sea, whereby no vessel can sail in or leave the bay unseen. At the same time on each side of the entrance to Amerika Bay a submarine stationed during the time from sunup to sundown.
- 6) Military embankment installations and troops
  - a) For as far as visible no troops encamped in the ~~area~~ <sup>surrounding area</sup> of Nakhoda. Also in the city no military traffic observed.
  - b) Only 1 caserne observed, no. 1 a concrete building, 3 stories at point 5 of sketch 2. Uniform of the 2 ~~soldiers~~ <sup>soldiers</sup> observed ~~at~~ the caserne completely like the uniform of the frontier guard.

### C. Miscellaneous

#### 1) Weapon transports

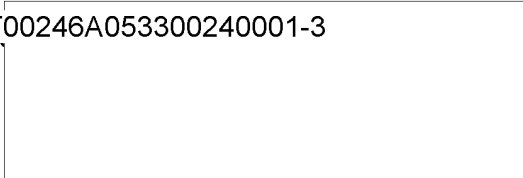
During the period that observer's ship lay at anchor (23 days) in the roads transports from Nakhoda (trucks, tanks, bulldozers, etc.) by ship.

Ships left during the night hours from the harbor. Cargoes were only vaguely ~~not~~ <sup>not</sup> observable. Transports are possible for only a short time to the northerly lying harbors (~~very little~~ <sup>very little</sup> free from ice very little). Observer's ship had to wait because these transports had priority). After coming into the harbor no army materiel seen loaded or seen standing on the pier.

#### 2) Ship repair yard (point 4 sketch 2)

In the yard 1 floating drydock with a capacity of ~~1000~~ <sup>receiving</sup> ships up to 6/7000 Gross Registered Tons.

#### 3) Radio masts (point 7 sketch I and point 6 sketch 2)



On the mountain tops on the east side of Nakhoda Bay from Mys Astaf'Yeva just up to the south east of the submarine piers (point 1 and 2 sketch 2) on each 2 transmitter masts about 35 meters high.

4) Harbor obstructions

50X1-HUM

Can not be observed.



destroyers, submarines and small Russian freighters sailed around between the buoys, ~~to~~ to the east as well as to the west of the buoys.

5) Nautical information

50X1-HUM



In the area of point 9 sketch I where in 1958 broken stone was piled ships ~~with a draft of 8 to 9 feet still~~ pass ~~through~~ through between the island and the shore.

I

Object Index

- 2. Destroyer (photo made)
- 3. Submarine (photographed)
- 4. " "
- 5. MTB (photographed)
- 6. Presumably MTB base
- 7. Submarine ~~base~~ base/ radio station
- 8. Two buoys. Width of channel between the buoys 150 meters.
- 9. Area where in 1958 broken stone was piled.

2.

Nakhoda (tracing of port plan)

OBJECT Index

- 1. Six piers (mooring place of submarines)
  - Piers ~~1/a~~ 1/a extend to the same length of piers ~~1/b~~ in D.
  - Piers ~~1/b~~ 1/b are new
- 2. Four small oil tanks
- 3. ~~anchorage for destroyers~~ Anchorage for destroyers
- 4. Ship repair yard and floating dry dock
- 5. Caserne



-5-

50X1-HUM

6. Radio masts
7. Factory buildings (concrete), 3 or 4 large halls without stories with much glass. Each hall about 100 meters long and 20 meters high with 1 to 2 funnels (no smoke) Presumably not yet in use. Buildings were not there in 1958.   
 it could be a power station.

50X1-HUM

50X1-HUM

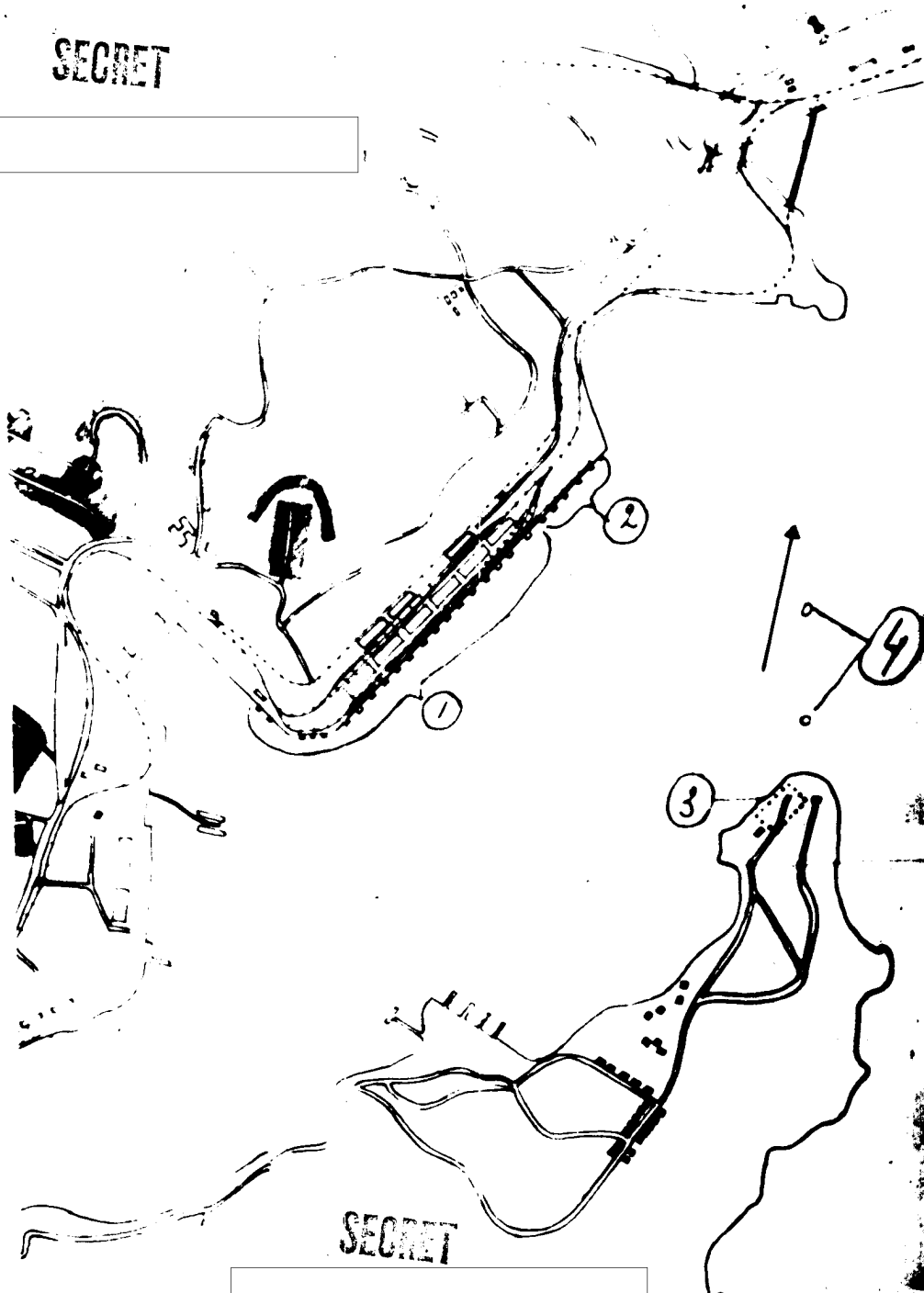
Sanitized Copy Approved for Release 2010/08/23 : CIA-RDP80T00246A053300240001-3

**Page Denied**

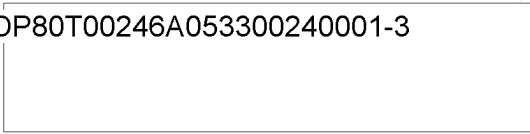
Next 1 Page(s) In Document Denied

ICLASS 1 (LEVEL 1A)

**SECRET**



**SECRET**



50X1-HUM

**SECRET**



50X1-HUM

Russia

Maritime/military

- 1) Russian Sea-Polar route around the north
- 2) Nautical among other information on the Nakhoda harbor



50X1-HUM

1 sketch of harbor installations

None

A. Russian polar sea route around the North

- 1. 

50X1-HUM

Russian ships which come here to load/unload with destination of Moermansk were given priority.

These are small ships of about 3000 Gross Registered Tons and larger ones of about 9/10000 GRT.

- 2. 

50X1-HUM

"Navigation around the North is possible from June to the beginning of October.

June and July are the most favorable months.

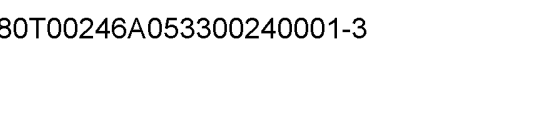
The trip from Nakhoda to Moermansk lasts 15 days.

The ships are provisioned for 6 months in case they get stuck in the ice. If the ships must winter, then an airplane takes the ~~At~~ greatest part of the crew off and various provisions are

**SECRET**



50X1-HUM



50X1-HUM

~~XX~~

supplied now and then by air.  
In the last 2 years only one ship has stayed.

Navigation is done ~~by~~ radio beacons, of which <sup>there</sup> is a sufficient number, and further ~~by~~ a single light. The ships further receive ~~XXXXXXXXXXXX~~ ice maps. ~~always~~.

The ships travel in convoy with ice breakers".

50X1-HUM

- 3.  the ships had been deeply laden down/ and  they transported deck cargo.

50X1-HUM



B. Nautical data

50X1-HUM



- 2.  8 pilots were on the spot.   
The pilots ~~XXXXXX~~ were equal to their task and spoke fairly good English. ~~They~~ Sailing into the harbor <sup>had to</sup> be done between 2 buoys, which lie to the north of Point Astaf'yeva (See attached sketch).



50X1-HUM

B. Harbor installations etc.

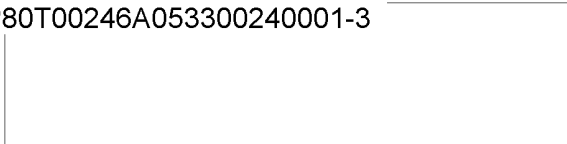
- 1. See for this, attached sketch and object index below belonging to this sketch.

point 1: general cargo pier, where among others, the Russian freighters take on cargo, destined for Moermansk. Grain was unloaded  here into hoppers ~~or~~ standing on the pier, which hoppers were ~~XXXX~~ in rail cars ~~or~~ riding emptied underneath.

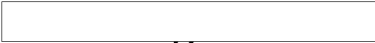
50X1-HUM

point 2: coal pier, from which much coal ~~XXXXXXXXXXXX~~ is shipped to Japan. In a north wind the coal causes much dust on the general cargo pier. ~~Along~~ With this is the plan to transfer the coal transport to a new pier lying on the west side of Mys Astaf'jeva.

point 3: new coal pier in construction



\*#\*  
-3-

 about 3 years ago people were already busy on the spot ~~7/1~~ blowing up the mountain side for construction of this pier. Also at present, now and again still parts of this mountain side were blown up. It is not known how long the pier is and when it will be ready.

Point 4: two buoys, between which the ships must sail into the harbor.

50X1-HUM

50X1-HUM