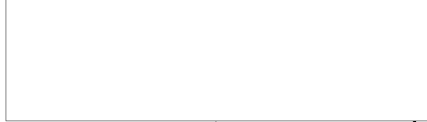
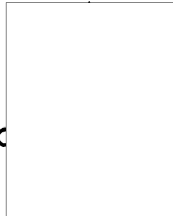


D 6398

under



CENTRAL INTELLIGENCE AGENCY

50X1-HUM

This Document contains information affecting the National Defense of the United States, within the meaning of Title 18, Sections 793 and 794, of the U.S. Code, as amended. Its transmission or revelation of its contents to or receipt by an unauthorized person is prohibited by law. The reproduction of this form is prohibited.

INFORMATION REPORT

SECRET - U.S. OFFICIALS ONLY

~~SECRET - U.S. OFFICIALS ONLY~~

Atkinson
50X1-HUM

COUNTRY Czechoslovakia/East Germany/Poland

REPORT

SUBJECT Views of Roads, Bridges, Cities and Rural Areas

DATE DISTR. 27 August 1954

NO. OF PAGES 1 50X1-HUM

DATE OF INFO.

REQUIREMENT NO. RD 50X1-HUM

PLACE ACQUIRED

REFERENCES

THE SOURCE EVALUATIONS IN THIS REPORT ARE DEFINITIVE.
THE APPRAISAL OF CONTENT IS TENTATIVE.

~~SECRET - U.S. OFFICIALS ONLY~~

The attached series of photographs of roads, bridges, and views of cities and rural areas in Poland, East Germany, and Czechoslovakia

PRIORITY ROUTING

INCL...

IMMEDIATE ACTION REQUIRED

SECRET - U.S. OFFICIALS ONLY

REFERENCE COPY

50X1-HUM

STATE	ARMY	NAVY	AIR	AEC	OC	x	
-------	------	------	-----	-----	----	---	--

(Note: Washington Distribution Indicated by "X"; Field Distribution Indicated by "A")

1954

Declassified in Part - Sanitized Copy Approved for Release 2013/06/20 : CIA-RDP80S01540R006000030015-2

50X1-HUM

Page Denied

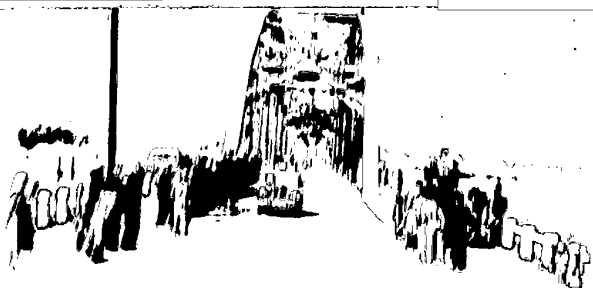
Declassified in Part - Sanitized Copy Approved for Release 2013/06/20 : CIA-RDP80S01540R006000030015-2

POLAND WARSZAWA NOWY DWOR MAZOWIECKI
52 26 N 20 43 E BRIDGE OVER WISLA RIVER.
SECRET/US OFFICIALS ONLY

U. S. OFFICIALS ONLY 1.)

Strakning:

50X1-HUM^a - b - c - d - A 50X1-HUM
Sections A-a-b-c-d-A



50X1-HUM

1. Bro over Weichsel ved Nowy Dwor.

Bridge over Weichsel at Nowy Dwor.

POLAND WARSAW WARSAW 52 15 N 21 00 E
NORTH BRIDGE OVER WISLA RIVER.
SECRET/US00

50X1-HUM

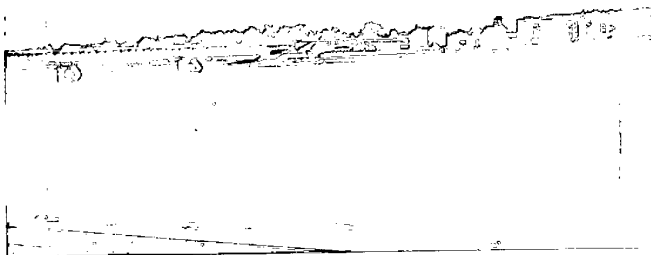


2. Bro over Weichsel i Warszawa. (Nordbroen)

Bridge over Weichsel in Warsaw (the north bridge)

POLAND WARSAW WARSAW 52 15 N 21 00 E
SOUTH BRIDGE OVER WISLA RIVER.
SECRET/US00

50X1-HUM



50X1-HUM

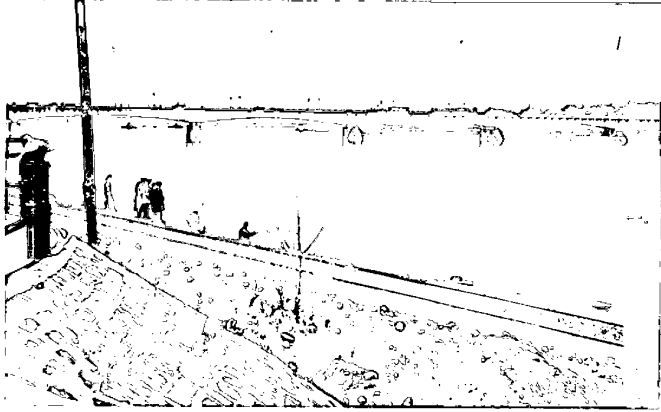
3. Bro over Weichsel i Warszawa. (Sydbroen)

Bridge over the Weichsel in Warsaw (the south bridge)

SECRET U. S. OFFICIALS ONLY

SECRET

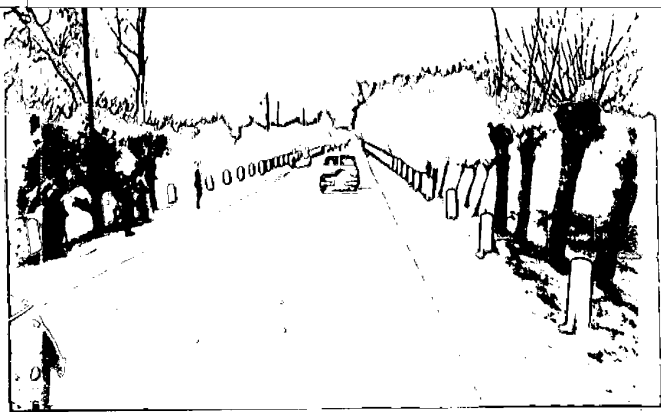
POLAND WARSAW WARSAW 52 15 N 21 00 E
SOUTH BRIDGE OVER WISLA RIVER.
SECRET/US00



Strækning: 50X1-HUM
A -a-b-c-d-A
Section A-a-b-c-d-A 50X1-HUM

4. Bro over Weichsel i Warszawa. (Sydbroen) Bridge over the Weichsel in Warsaw. (south bridge)

POLAND
CONCRETE ROAD BETWEEN WARSAW AND NOWY DWOR MAZO-
SECRET/US OFFICIALS ONLY



50X1-HUM

5. Betonvej mellem Warszawa og Nowy Dwor.

Concrete road between Warsaw and Nowy Dowl.

POLAND WARSAW WARSAW 52 15 N 21 00 E
SOUTHERN SUBURB. SECRET/US00



50X1-HUM

6. Sydlig forstad til Warszawa.

The southerly suburb of Warsaw.

SECRET
U. S. OFFICIALS ONLY

POLAND

ASPHALT ROAD BETWEEN WARSAW AND LODZ.

SECRET/US00



U. S. OFFICIALS ONLY

Strækning: section

- B

50X1-HUM
50X1-HUM
50X1-HUM

Bredt (asfalt) vej-
afsnit mellem Warzsa-
wa og Lodz.
Asphalt road section between
Warsaw and Lodz



Vejrabat på
samme strækning.

Road shoulder on the above secti

POLAND

BRICK ROAD (MOST COMMON TYPE) BETWEEN WARSAW
AND LODZ.

SECRET/US00



50X1-HUM

Klinkevej, hyppigste
vejtype mellem Warzsa-
wa og Lodz.

brick
~~cobble stone (sic)~~ most common
type road between Warsaw
and Lodz

SECRET

U. S. OFFICIALS ONLY

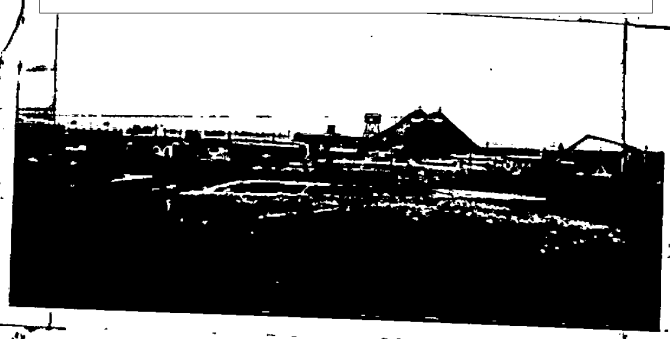
SECRET
U. S. OFFICIALS ONLY

4.)

Strækning: stretch. 50X1-HUM
B - C

POLAND KATOWICE CZESTOCHOWA 50 48 N 19 07 E
ORE MINE. SECRET/US00

50X1-HUM



0. (Malm) mine ved
Czestochowa.
Ore mine at Czestochowa

POLAND KATOWICE
ROAD BETWEEN CZESTOCHOWA AND KATOWICE, BRIDGE IN
BACKGROUND. SECRET/US00

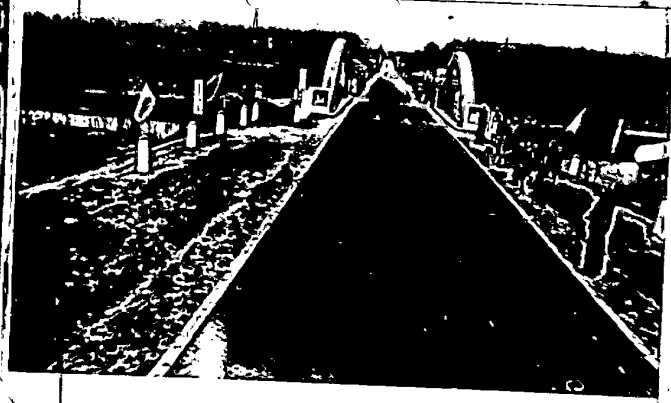
50X1-HUM



Bro mellem B og C,
løvragt klinkevej.
Bridge between ~~band~~ B and C
the rest brick.

POLAND KATOWICE
ROAD BETWEEN CZESTOCHOWA AND KATOWICE.
SECRET/US00

50X1-HUM



50X1-HUM

Bro mellem B og C,
brolagt vej.
Bridge between Band C,
bridge paved road.

SECRET
U. S. OFFICIALS ONLY

50X1-HUM

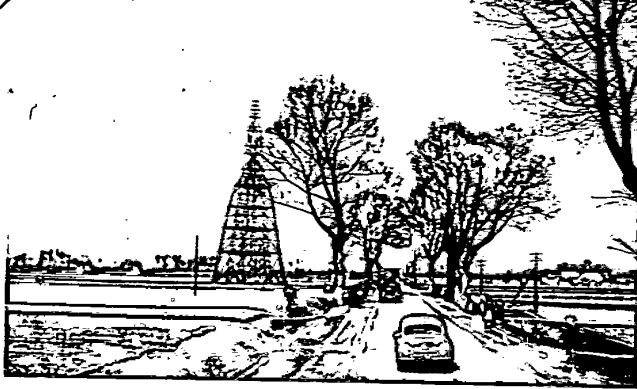
5.)

SECRET
U. S. OFFICIALS ONLY

Strækning: stretch.
B - C

POLAND KATOWICE
PROBABLE TRIGONOMETRIC STATION BETWEEN CZESTOC-
HOWA AND KATOWICE. SECRET/US00

50X1-HUM



13. Formodentlig
trigonometrisk sta-
tion mellem B - C.

Apparently a trigonometric
station between B-C.

*✓
Zadank
not*

SECRET

U. S. OFFICIALS ONLY

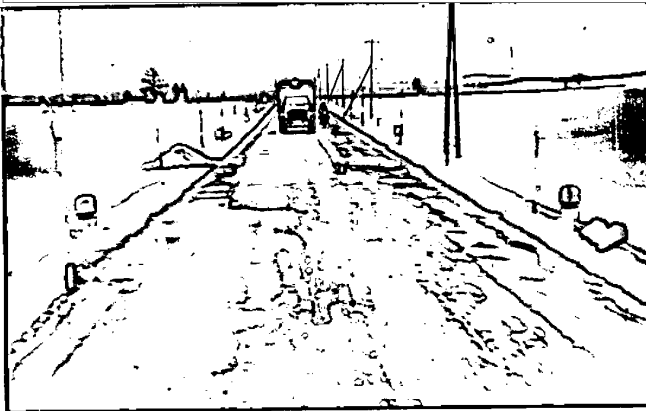
U. S. OFFICIALS ONLY

6.)
Strækning: stretch
F - G

50X1-HUM

50X1-HUM

GERMANY BRANDENBURG GUBEN (NR) 51 57 N 14 43 E
SOUTH OF TOWN. SECRET/US00



14. Vejen umiddelbart syd for Guben.
The road just south of Guben

GERMANY BRANDENBURG GUBEN (NR) 51 57 N 14 43 E
SOUTH OF TOWN. SECRET/US00

50X1-HUM



15. Omtrent samme position - brolagt vej.
About the same place paved road.

SECRET

U. S. OFFICIALS ONLY

SECRET

7.)

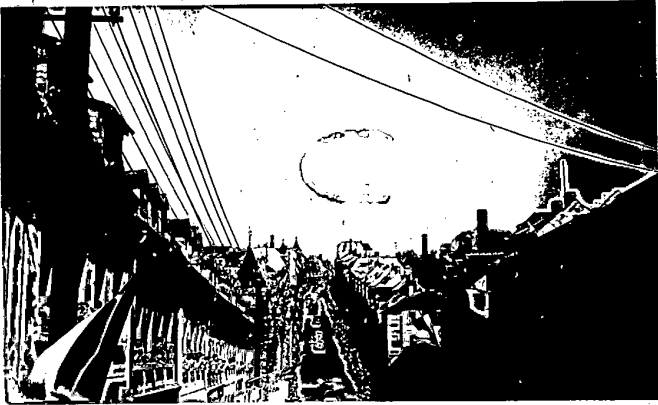
50X1-HUM

GERMANY SACHSEN MEERANE '50 51 N 12 28 E
SECRET/US OFFICIALS ONLY

Strækning: stretch
H - I
50X1-HUM



16. Umiddelbart syd for Leipzig.
Just south of Leipzig



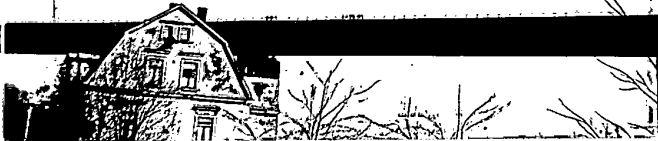
17. Stejl bakke i Meerane.
Stigning: 29 m på 100 m.
steep grade in Meerane
grade-29 meters in 100 meters

50X1-HUM

50X1-HUM

GERMANY SACHSEN ZWICKAU (NR) 50 54 N 12 30 E,
AUTOBAHN OVERPASS 3 KM SOUTH OF TOWN.
SECRET/USOO

18. Autobahn - overførsel 3 km syd for Zwickau.
Autobahn over pass 3 kilometers south of Zwickau.



SECRET
U. S. OFFICIALS ONLY

SECRET
U. S. OFFICIALS ONLY

Strækning: Stretch
H - 7

50X1-HUM



19. Ved Schneeberg.

At Schneeberg.

GERMANY SACHSEN AUE 50 35 N 12 42 E

POSSIBLY OPEN URANIUM BEDS.

SECRET/US00

50X1-HUM

50X1-HUM



20. Ved Aue- muligvis åbent uranleje.

At Aue, possibly open uranium beds.

SECRET

U. S. OFFICIALS ONLY

SECRET

U. S. OFFICIALS ONLY

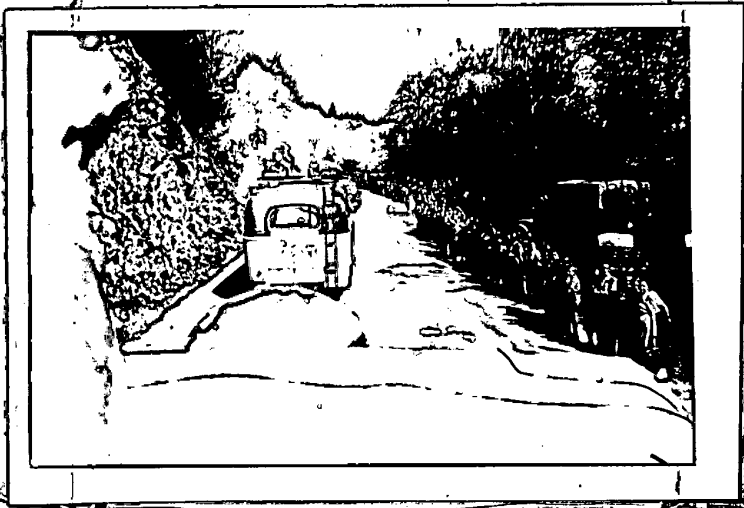
9.)

Strækning:

I - J

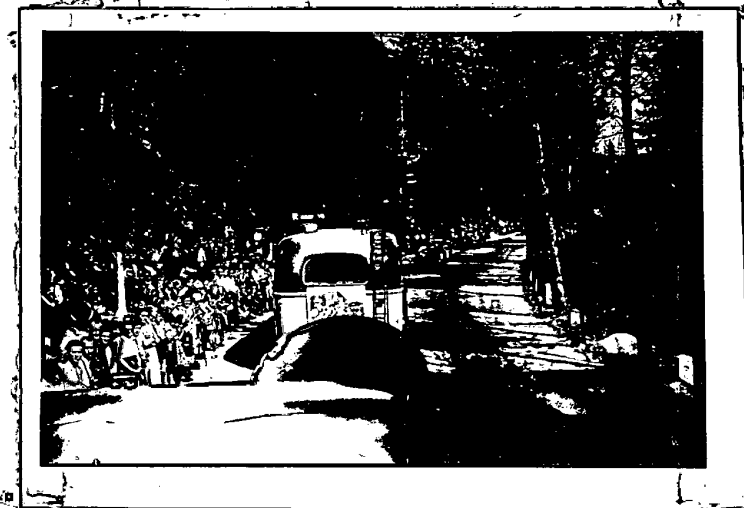
section

50X1-HUM



21. Asfaltvej.

Asphalt road



22. Asfaltvej.

Asphalt road

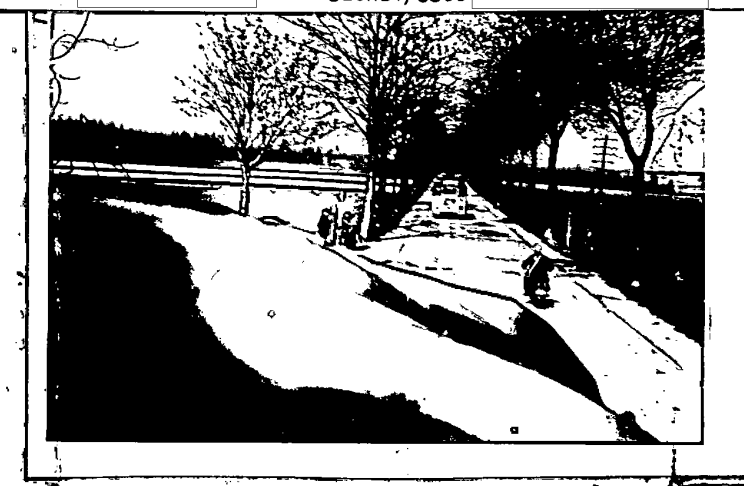
50X1-HUM

GERMANY SACHSEN

ROAD BETWEEN AUE AND DRESDEN.

SECRET/USOO

50X1-HUM



23. Brolagt vej.

Paved road

SECRET

U. S. OFFICIALS ONLY

50X1-HUM

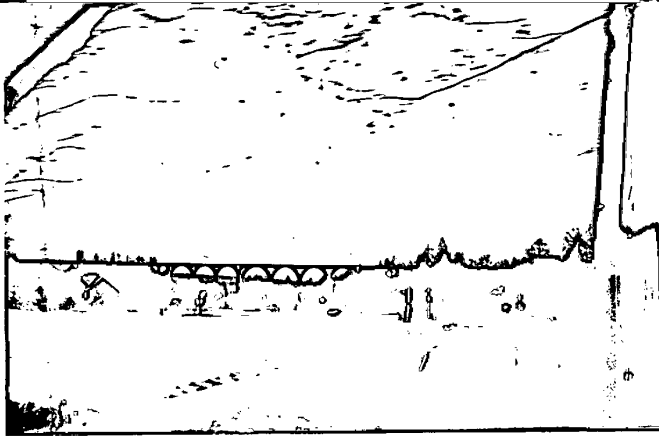
GERMANY SACHSEN

RAILROAD BRIDGE ALONG KARL MARX-STADT - DRESDEN-
PIRNA ROAD. SECRET/US00

1

Strækning: section
I - J

50X1-HUM



24. Bro (jernbane)
på strækningen

Bridge (Rail Road)
on this section

50X1-HUM

GERMANY SACHSEN PIRNA 50 58 N 13 56 E 50X1-HUM
SECRET/US00



25. Skarp kurve
ved Pirna. (ca
10 km syd for Dresden)

sharp turn at Pirna (about
10 kilometers south of
Dresden)

GERMANY SACHSEN

50X1-HUM

50X1-HUM

ROAD BETWEEN PIRNA AND BAD SCHANDAU.
SECRET/US00

6. Vejstrækning
mellem Pirna (se
ovenfor) og Bad
Schandau.

The road section between Pirna
(see above) and Bad Schandau.



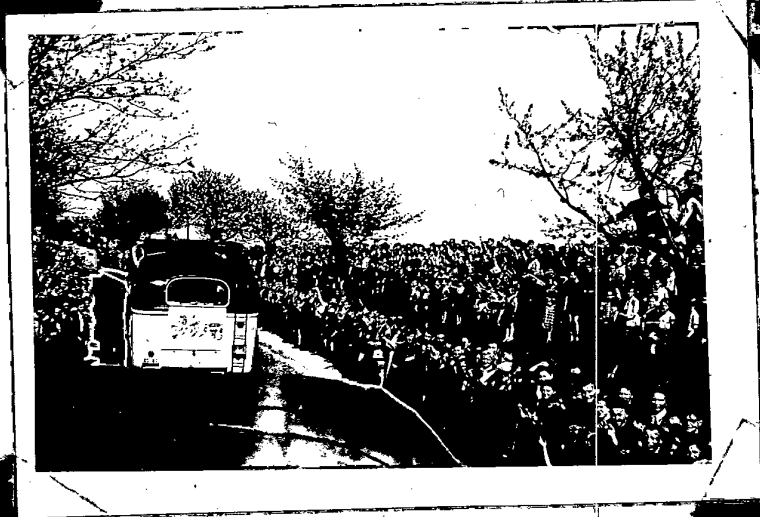
SECRET

U. S. OFFICIALS ONLY

11.)

SECRET
U. S. OFFICIALS ONLY

Strækning:
I - J



27. Kort før
Bad Schandau.

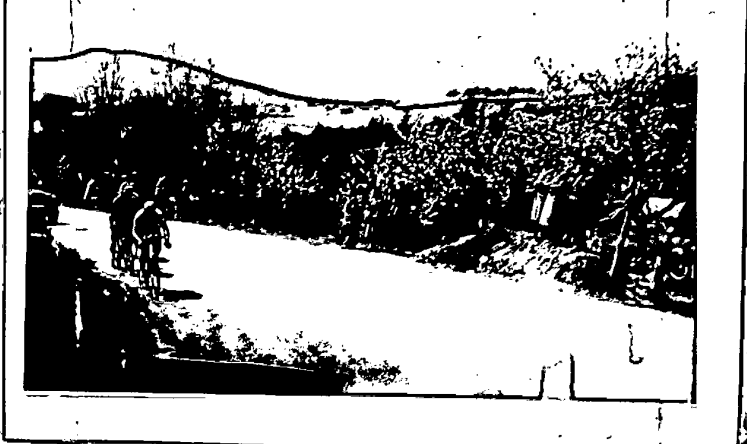
Short distance before
Bad Schandau.

SECRET
U. S. OFFICIALS ONLY

CZECHOSLOVAKIA BOHEMIA DECIN (NR)
49 57 N 14 06 E ROAD TO CESKA LIPA SOUTH
OF TOWN. SECRET/US OFFICIALS ONLY

Strækning: 12.)
J - K

50X1-HUM



28. Kort efter Decin.
Short distance after Decin



29. Fra strækningen
skarp kurve.
from the stretch of sharp curves

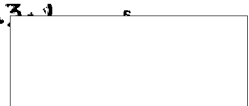


30. -----

SECRET
U. S. OFFICIALS ONLY

SECRET
U. S. OFFICIALS ONLY

Strækning:
J - K



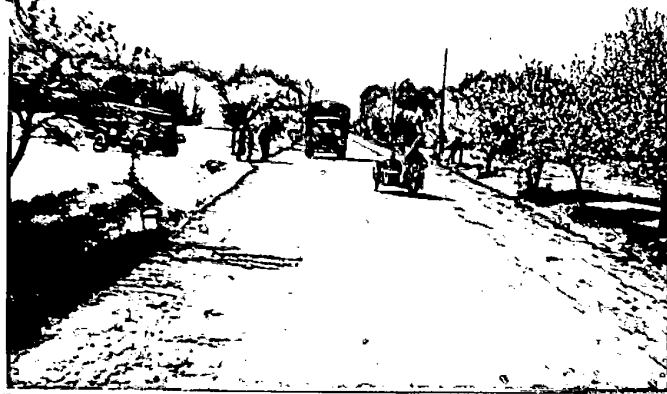
50X1-HUM

CZECHOSLOVAKIA BOHEMIA
ROAD BETWEEN DECIN AND PARDUBICE.
SECRET/US00

50X1-HUM
50X1-HUM

31. Typisk afsnit fra
strækningen.
(asfaltvej)

typical section of this stretch
asphalt road.



SECRET
U. S. OFFICIALS ONLY

14.)

SECRET

U. S. OFFICIALS ONLY

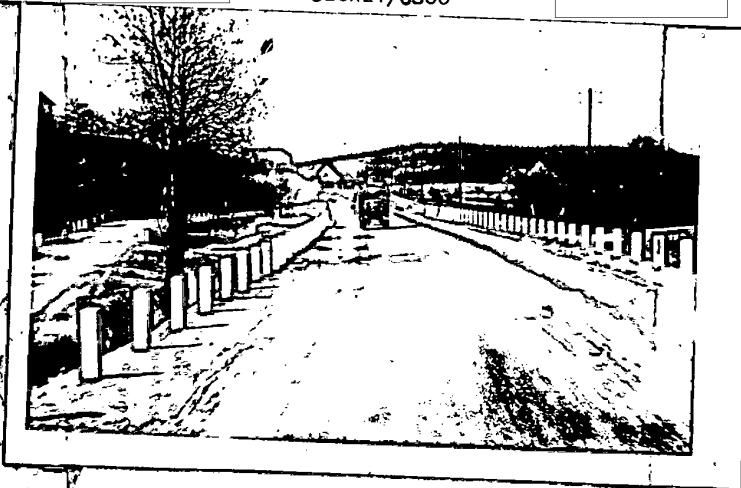
Strækning:
K - L

50X1-HUM

CZECHOSLOVAKIA BOHEMIA 50X1-HUM 50X1-HUM

ROAD BETWEEN VYSOKE MYTO AND SVITAVY.

SECRET/US00



32. Udbygget vej-
strækning fra
Vysoke Myto.

new stretch of road from
Vysoke Myto.



33. Vejudretning
syd for Svitavy.

road straightening south of
Svitavy.

SECRET

U. S. OFFICIALS ONLY

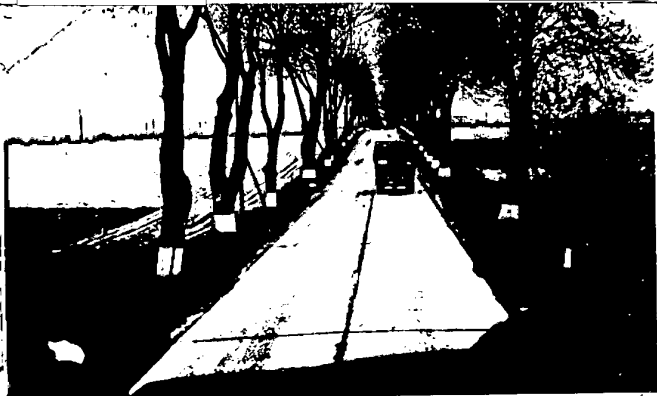
~~SECRET~~
U. S. OFFICIALS ONLY

Strækning:
L - M

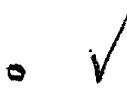


50X1-HUM 50X1-HUM
CZECHOSLOVAKIA MORAVIA-SILESIA BRNO (NR)
49 12 N 16 38 E WEST OF TOWN.
SECRET/US00

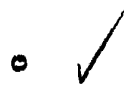
50X1-HUM



34. Umiddelbart vest for Brno Betonvej.
Just west of Brno Concrete road.



35. Som 34.
like 34



CZECHOSLOVAKIA MORAVIA-SILESIA BRNO (NR)
49 12 N 16 38 E WEST OF TOWN.
SECRET/US00

50X1-HUM

50X1-HUM



36. Som 34.
like 34



~~SECRET~~
U. S. OFFICIALS ONLY

SECRET

Strækning:

- M



50X1-HUM

50X1-HUM

CZECHOSLOVAKIA

BRNO-TABOR ROAD (ASPHALT).

SECRET/USOO



37. Kuplet asfalt-vej på strækningen.

~~stretch of old road~~
stretch of old asphalt road

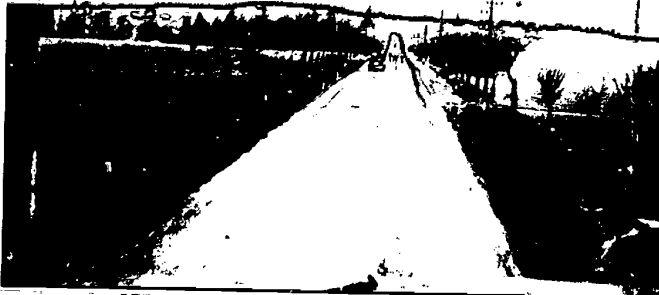
CZECHOSLOVAKIA

50X1-HUM

50X1-HUM

BRNO-TABOR ROAD (ASPHALT).

SECRET/USOO



38. Nyere vej-strækning.

newer stretch of road

CZECHOSLOVAKIA

50X1-HUM

50X1-HUM

BRNO-TABOR ROAD (ASPHALT).

SECRET/USOO



39. Kurve, typisk for strækningen.

curve typical of this stretch

SECRET

U. S. OFFICIALS ONLY

~~SECRET~~

Strækning
M - N



CZECHOSLOVAKIA BOHEMIA PISEK (NR) 50X1-HUM
49 18 N 14 09 E SECRET/US00

50X1-HUM



40. Langstrakt
bakke ved Pisek.
long hill at Pisek

CZECHOSLOVAKIA BOHEMIA PISEK (NR) 50X1-HUM
49 18 N 14 09 E SECRET/US00



41. Ved Pisek
At Pisek

42. Skarp kurve 3 km
for Pisek (øst for)
sharp curve 3 km before
Pisek (east of)



~~SECRET~~

U. S. OFFICIALS ONLY

SECRET

Strækning:
M - N



U. S. OFFICIALS ONLY

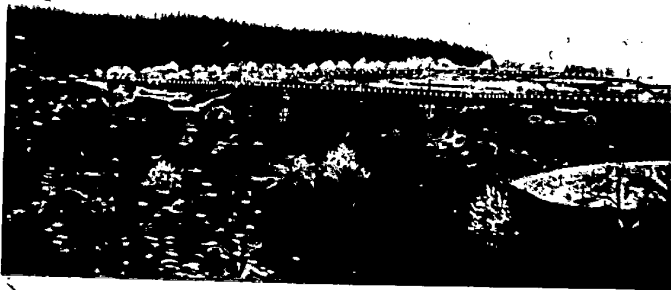
50X1-HUM

50X1-HUM

CZECHOSLOVAKIA BOHEMIA PISEK 49 18 N 14 09 E,
3 KM EAST OF TOWN. SECRET/US00

43. Skarp kurve
3 km øst for
Pisek.

sharp curve 3 km east of
Pisek



SECRET

U. S. OFFICIALS ONLY