

CENTRAL INTELLIGENCE AGENCY

INFORMATION REPORT

This Document contains information affecting the National Defense of the United States, within the meaning of Title 18, Sections 793 and 794, of the U.S. Code, as amended. Its transmission or revelation of its contents to or receipt by an unauthorized person is prohibited by law. The reproduction of this form is prohibited.

SECRET/CONTROL - U.S. OFFICIALS ONLY

~~SECURITY INFORMATION~~

50X1-HUM

COUNTRY Czechoslovakia

REPORT

SUBJECT 1. Czech Pilots' Handbook

DATE DISTR. 30 April 1951

NO. OF PAGES

DATE OF INFO.

REQUIREMENT NO. RD

PLACE ACQUIRED

REFERENCES

50X1-HUM

THE SOURCE EVALUATIONS IN THIS REPORT ARE DEFINITIVE.
THE APPRAISAL OF CONTENT IS TENTATIVE.

50X1-HUM

1. Attached is a Czech pilots' handbook

2. The handbook was standard issue to Czechoslovak commercial pilots, and most of the information in it dates from 1949 and 1950.

50X1-HUM

STATE	ARMY	NAVY	AIR	FBI	AEC			
-------	------	------	-----	-----	-----	--	--	--

(Note: Washington Distribution Indicated By "X"; Field Distribution By "#.") Form No. 51-61, January 1953

50X1-HUM

Declassified in Part - Sanitized Copy Approved for Release 2012/05/02 :
CIA-RDP80S01540R003700010002-4

are Denied

Next 258 Page(s) In Document Denied

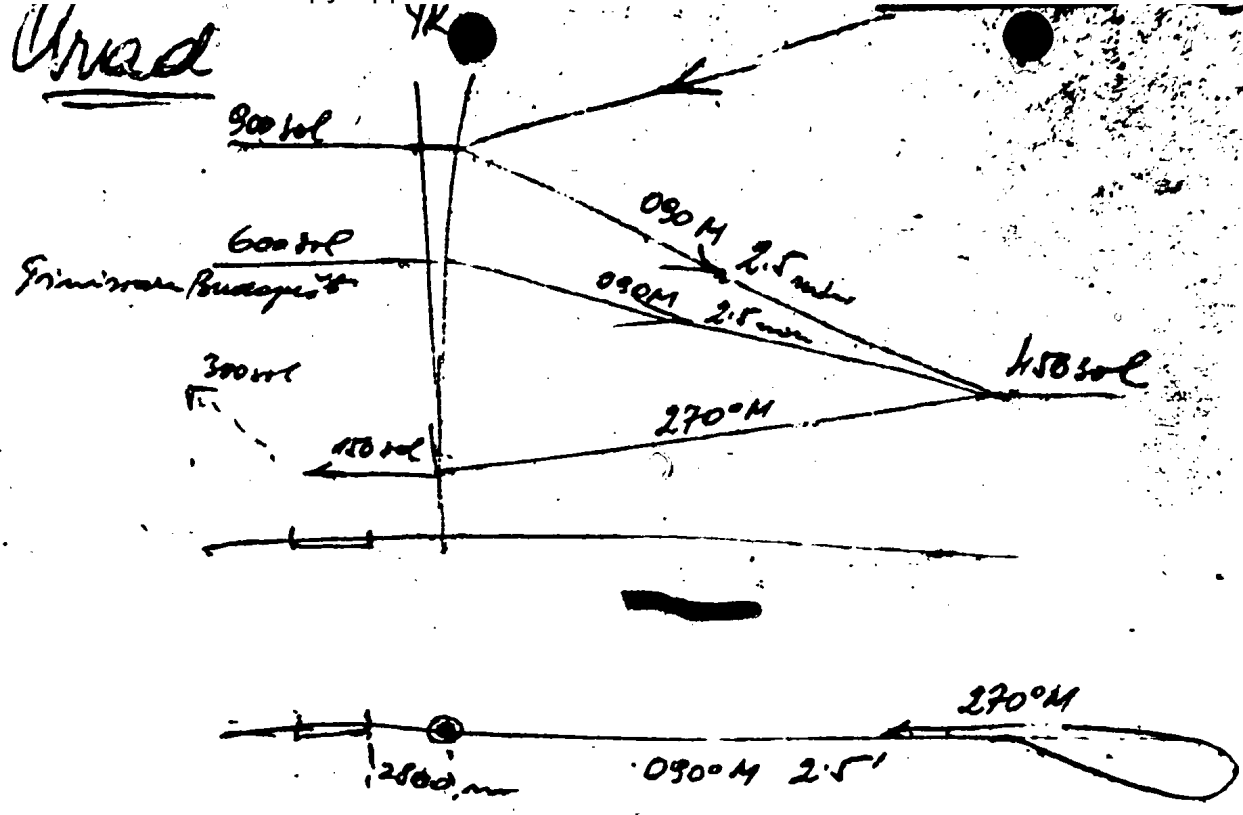
Declassified in Part - Sanitized Copy Approved for Release 2012/05/02 :
CIA-RDP80S01540R003700010002-4

Declassified in Part - Sanitized Copy Approved for Release
2012/05/02 : CIA-RDP80S01540R003700010002-4

Arad Airfield
(Punaria)

Declassified in Part - Sanitized Copy Approved for Release
2012/05/02 : CIA-RDP80S01540R003700010002-4

Urad

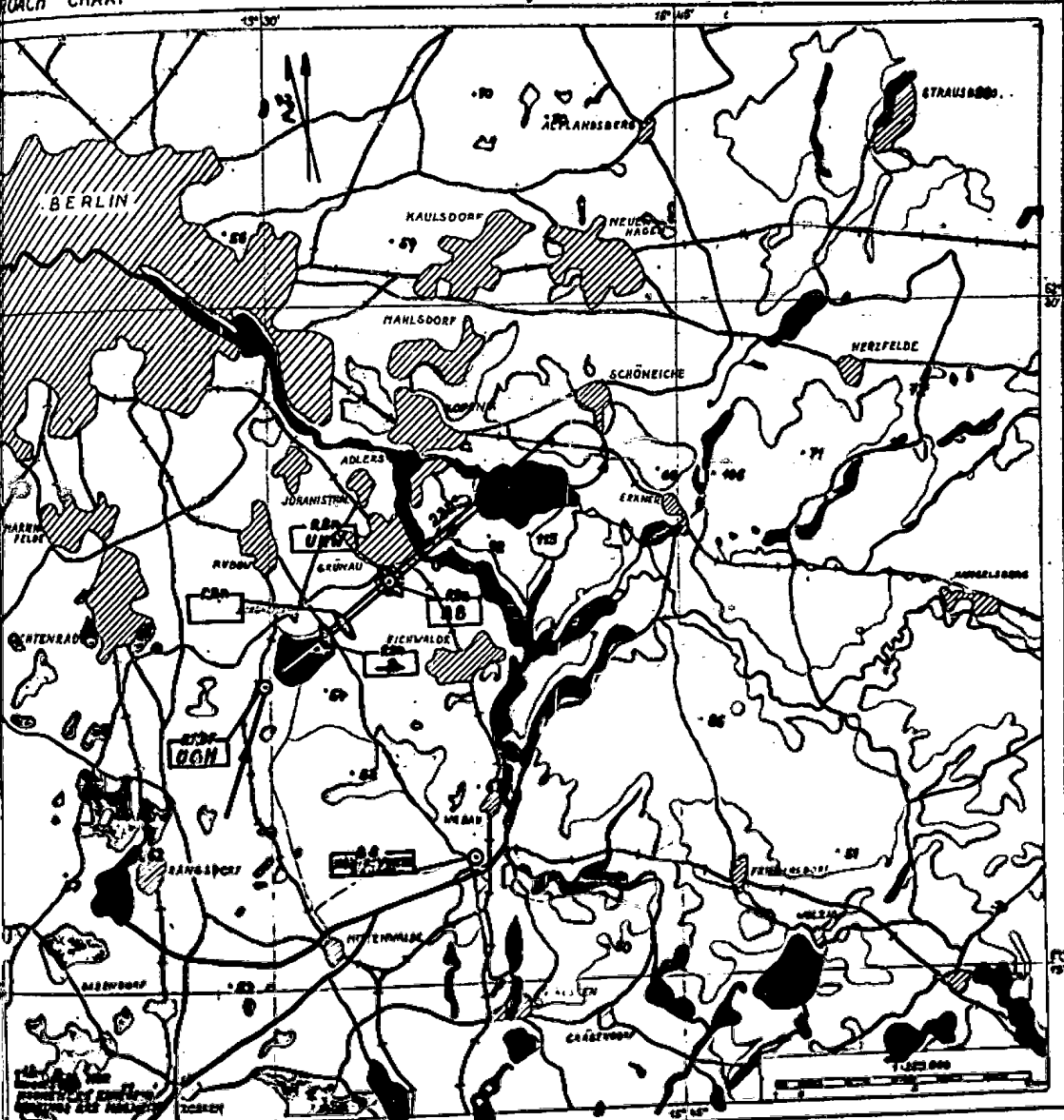


~~090 & 270M - SIP 270M 090M 2.5~~

LIŠOVACI MAPA
DACH CHART

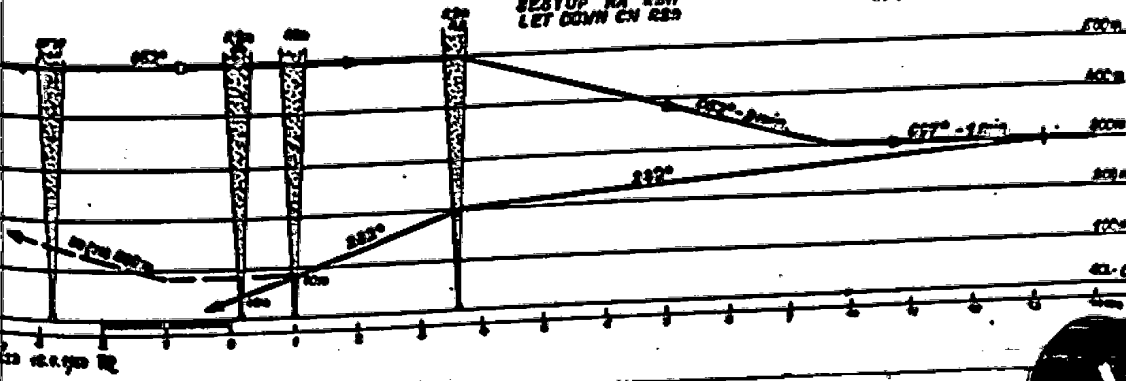
52°22'N 46m MER
13° 52' E 151R

DEUTCHLAND BERLIN
SCHÖNEFELD



RESTUP NA RBN
LET DOWN ON RBN

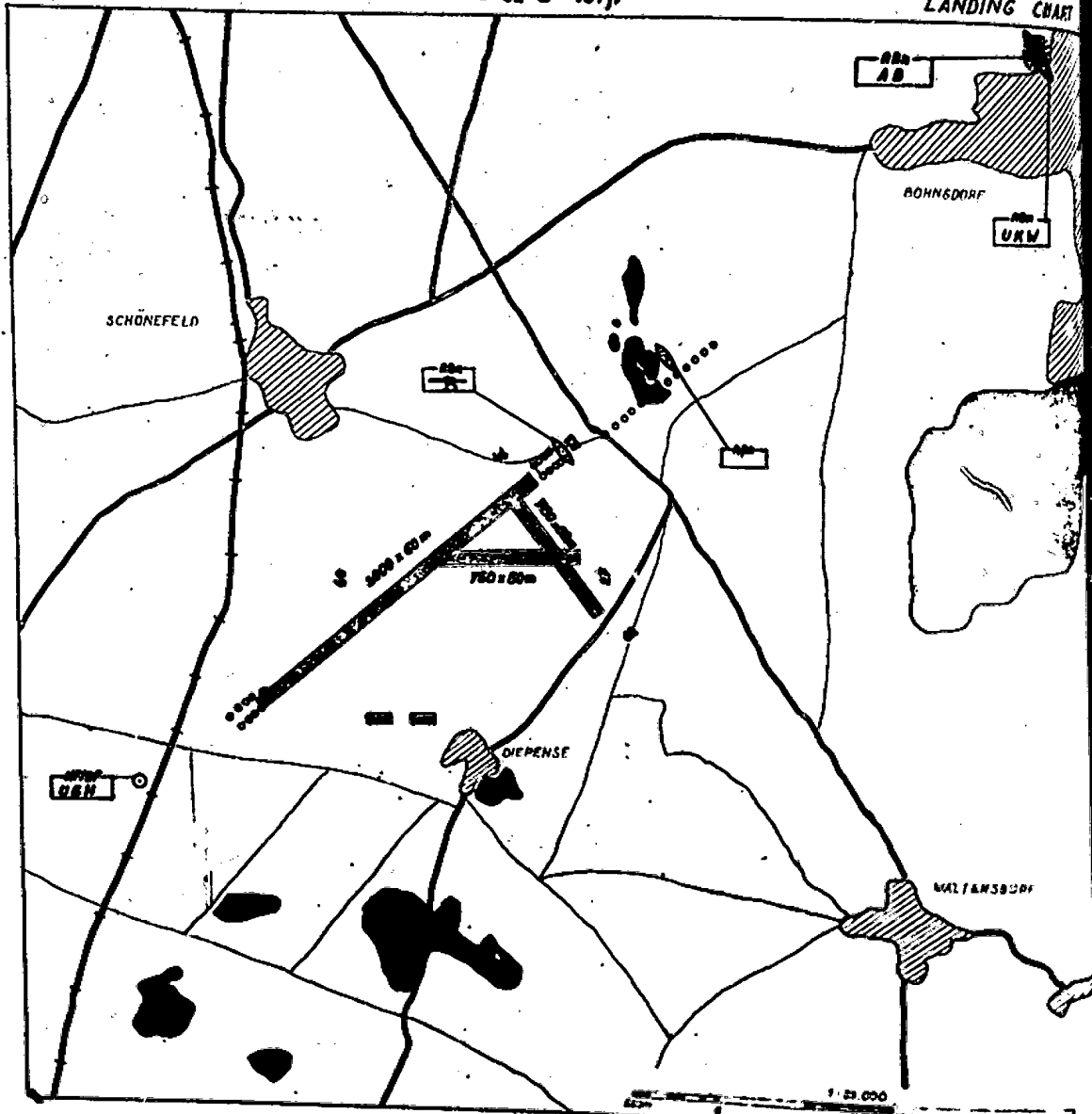
VERY F IN CL
RIGHTS IN R



BERLIN
SCHÖNEFELD DEUTCHLAND

52° 22' N 46m MZR
13° 32' E 131ft

PRÍSTÁVACÍ MÍSTO
LANDING CHART



CELNÍ A PASOVÁ SLUŽBA, TRATOVÁ PŘÍPRAVA, POROK-
NE KNOTY, OZVLNA LETADEL

CUSTOMS AND IMMIGRATION, CLEARING, FUEL AND OIL, MAIN-
TENANCE

OSVĚTLENÍ: PŘIBLIŽOVACÍ SVĚTLA, POKROV SVĚTLA, PŘEKÁŽ-
K SVĚTLA, DRÁŽKOVÁ SVĚTLA

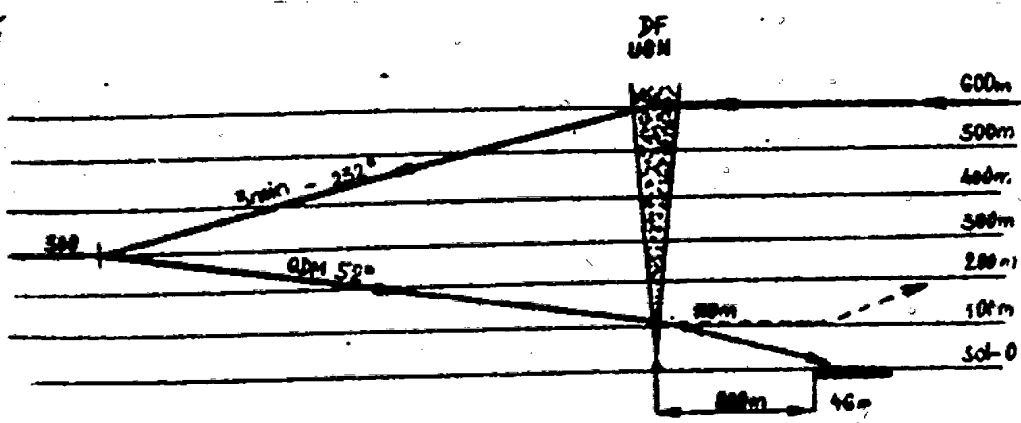
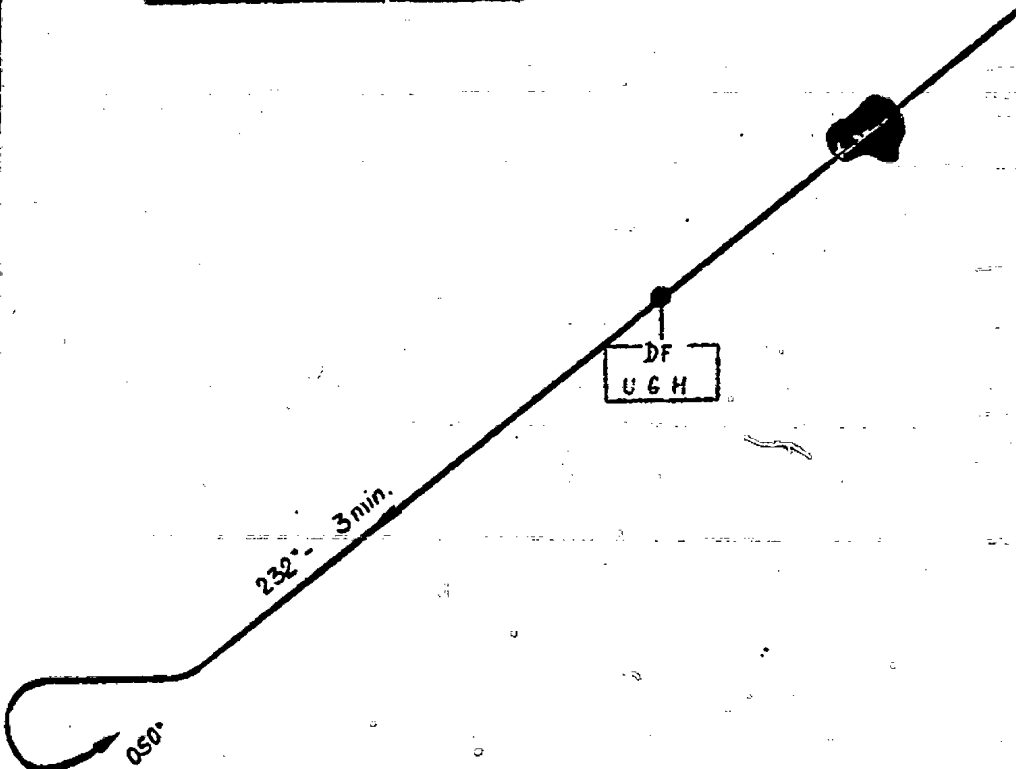
LIGHTING: APPROACH LIGHTS, THRESHOLD LIGHTS, OBSTRU-
ON LIGHTS, RWY LIGHTS

RADIO: HF DF, HF MT, HF RT, RBn, ROZKLAS

RADIO: HF DF, HF MT, HF RT, RBn, BROADCASTER

ČSA. n. s. 1950 02

Berlin - Sestup QGH



29.2.1952

Pris. 4.15

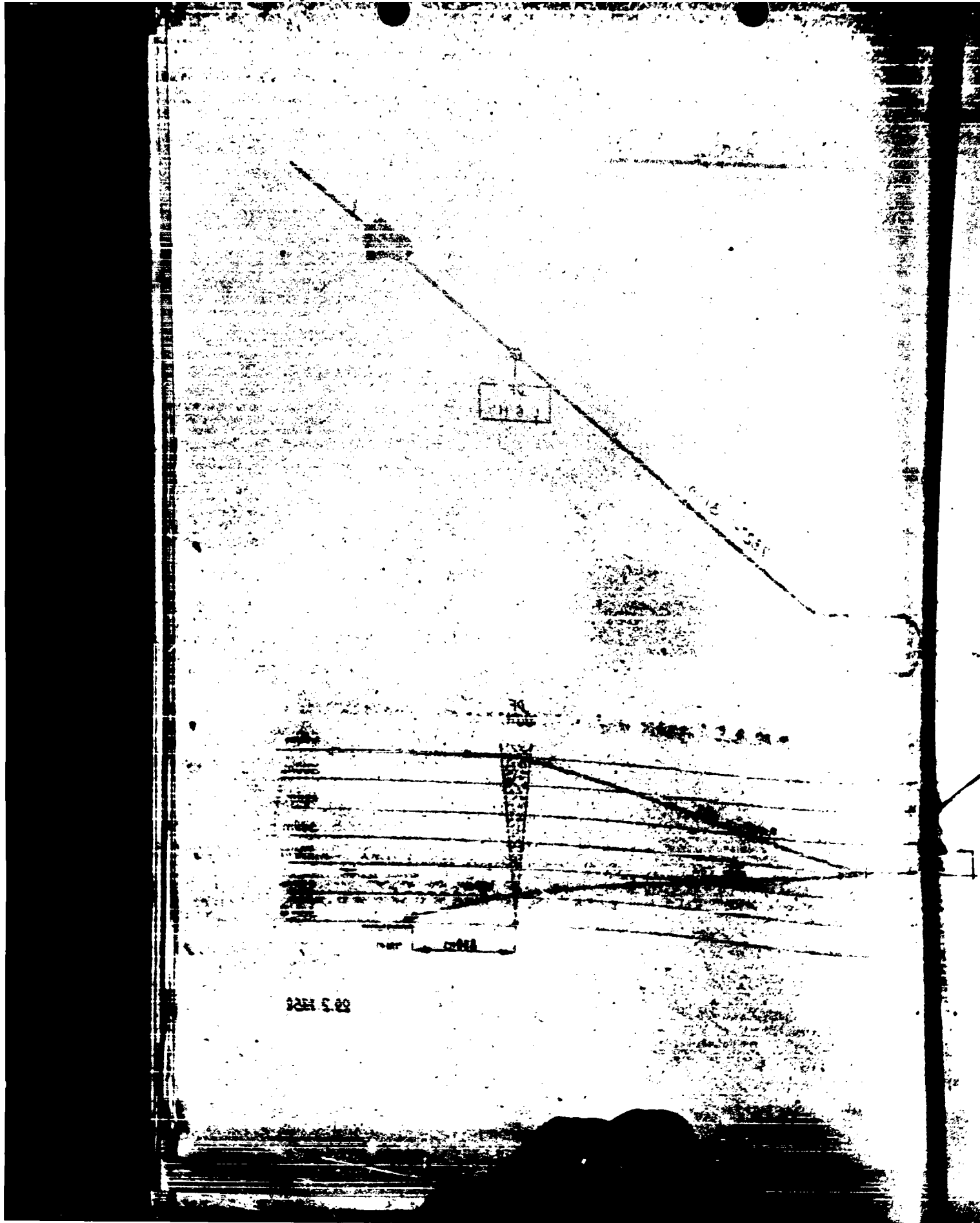
BS
R

28A
SRQ

28B
SRL

UJICICH.
IVA' SVETLA.

ČSA 11.11.51 M.

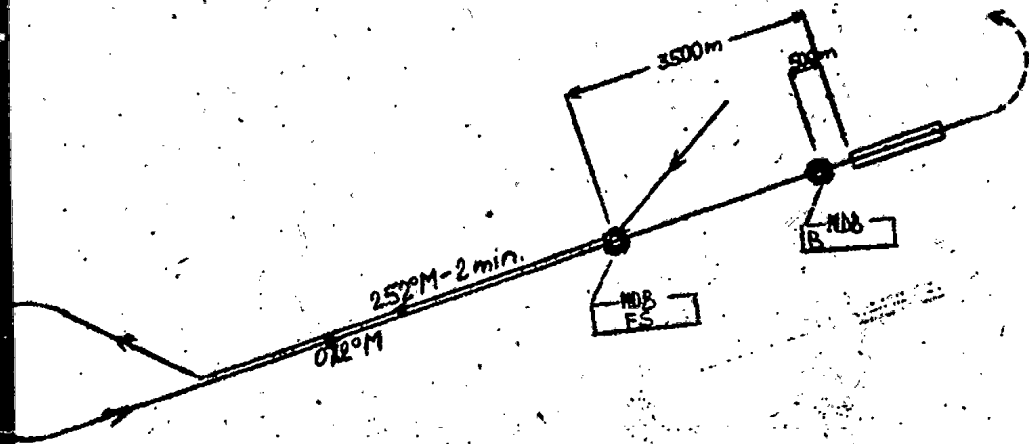


BUCURESTI-BANEASA

SESTUP NA NDB 072°M

PŘISTÁVACÍ M
LANDING CH

1000 800 500
HILLY

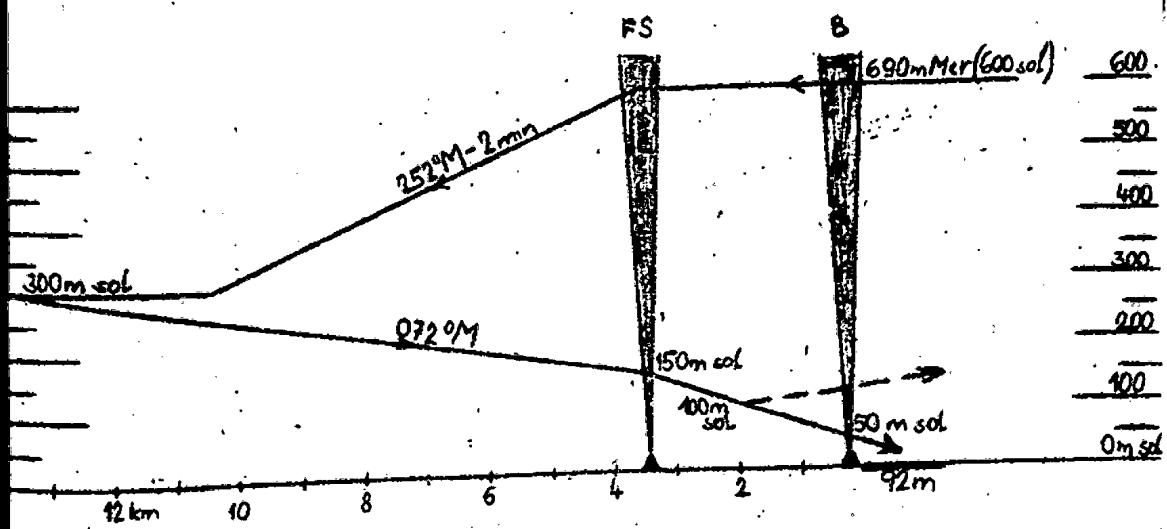


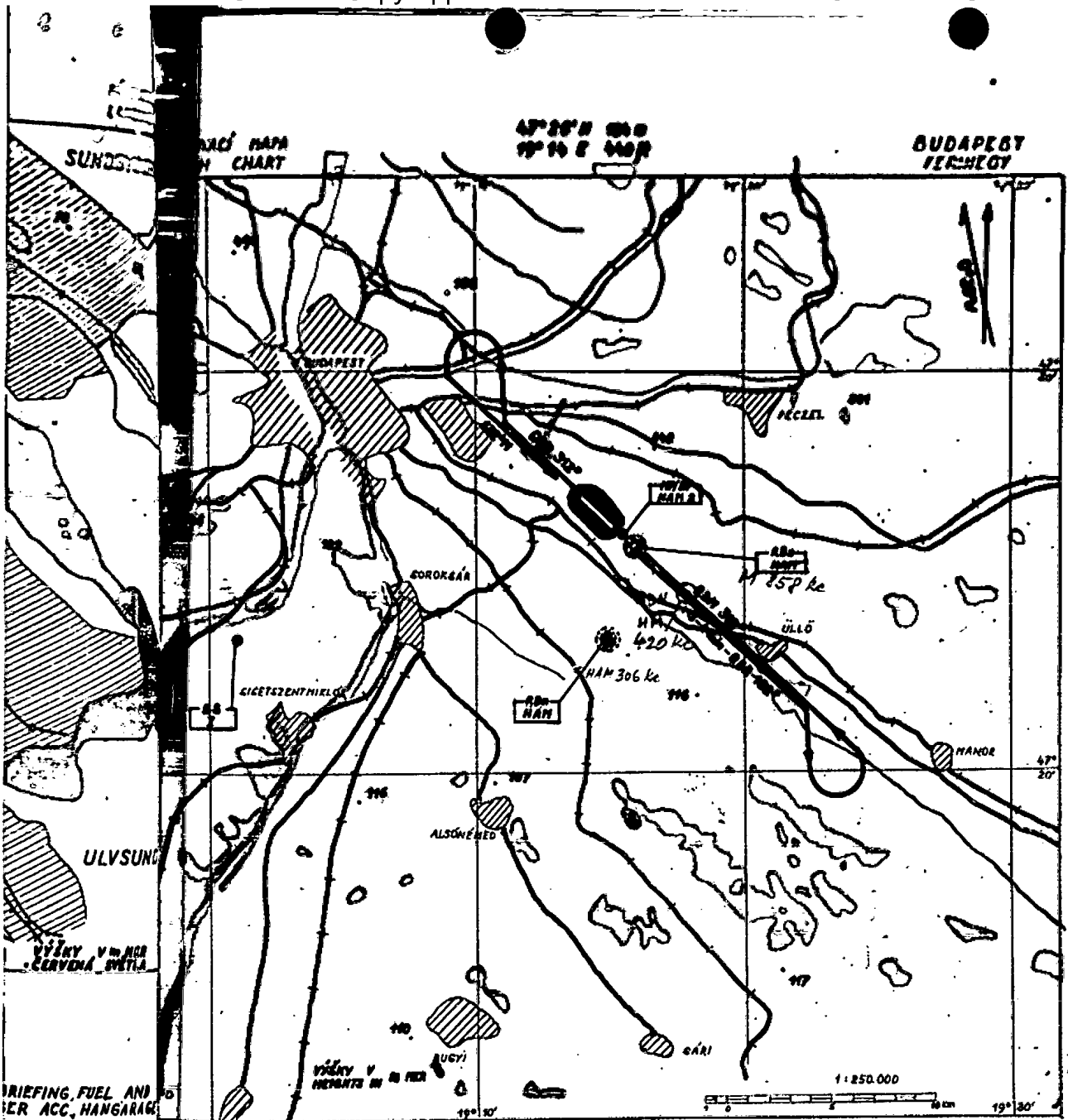
2A
9R

ON, FUEL AND DE
ACC.

LIGHTS

V, RB_n, BROADCAST

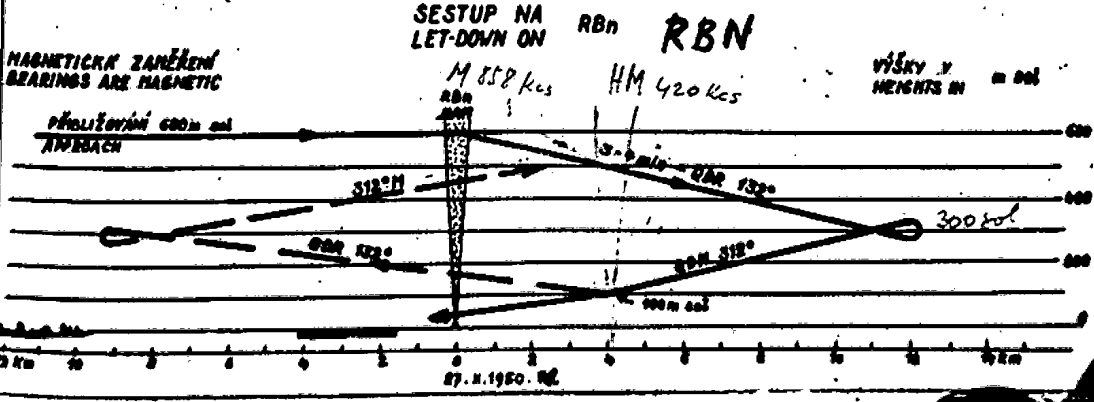




BRIEFING FUEL AND
ER ACC, HANGARAG

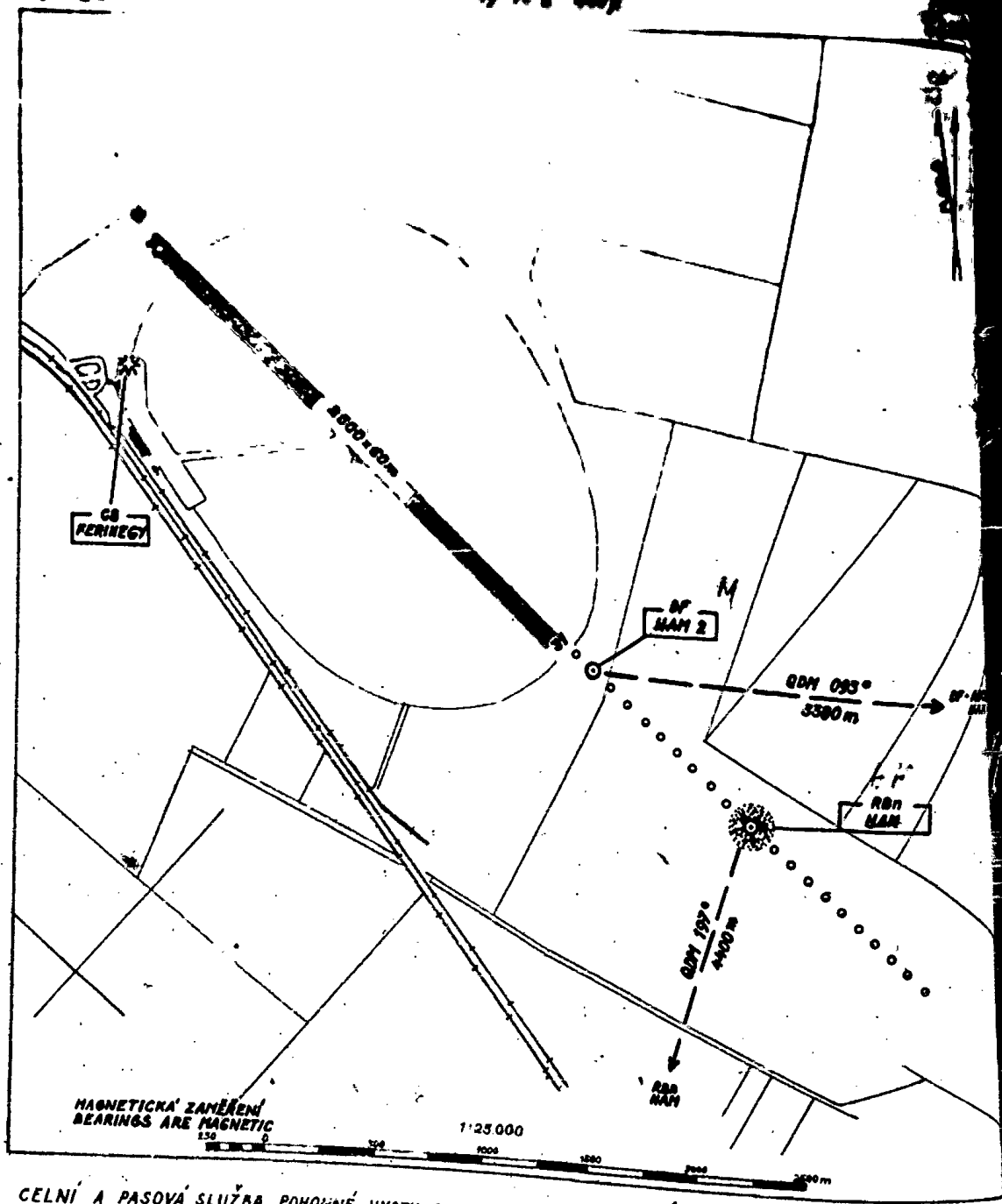
BEACON, OBSTRUCTION
05, 13, 16, 23, 31, 34
13, 23, 31
5, 13, 23, 31, 34

RF, HF MT, HF DF,
CASTER.



BUJAPIC
PERINE 6

47°26'N 104°10'E
10°14'E 4400



MAGNETICKA' ZAMĚŘENÍ
BEARINGS ARE MAGNETIC

1:25 000

MAGNETICKA' ZAMĚŘENÍ
BEARINGS ARE

PŘIBLIŽOVÁ
APPROACH

CELNÍ A PASOVÁ SLUŽBA, POHONNÉ HMOTY, OBSLUHA
LETADEL, UBYTOVÁNÍ CESTUJÍCÍCH

CUSTOMS AND IMMIGRATION, FUEL AND OIL, MAINTENANCE
PASSENGER ACC

OSVĚTLENÍ: PŘIBLIŽOVACÍ SVĚTLA, DRÁHOVÁ SVĚTLA,
PŘEKAZKOVÁ SVĚTLA

LIGHTING: APPROACH LIGHTS, R/W LIGHTS, OBSTRUCTION
LIGHTS

RADIO: HF RT, HF WT, HF DF, RBN, ROZHLAS

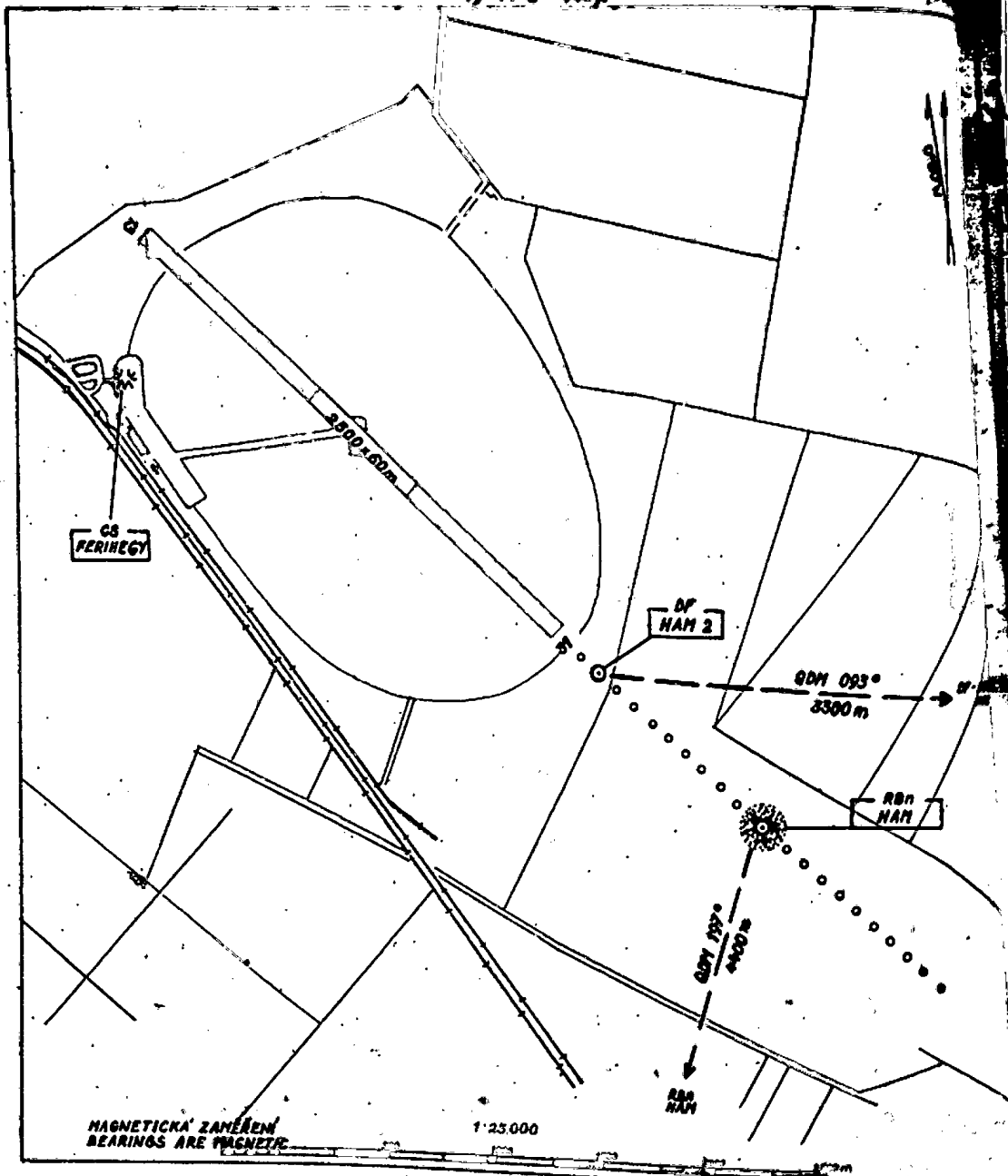
RADIO: HF RT, HF WT, HF DF, RBN, BROADCASTER

1. XL. SO. 198

ODDAROSY
FERINEGY

47°26'N 186m
19°16'E 4488

PŘÍZVUK
ROACH CI



CELNÍ A PASOVÁ SLUŽBA, POHONNÉ HROTY, ODSLUHA
LETADEL, UDYTOVÁNÍ CESTUJÍCÍCH

CUSTOMS AND IMMIGRATION, FUEL AND OIL, MAINTENANCE
PASSENGER ACC

OSVĚTLENÍ: PŘÍBLIŽOVACÍ SVĚTLA, DRÁHOVÁ SVĚTLA,
PŘEKÁŽKOVÁ SVĚTLA

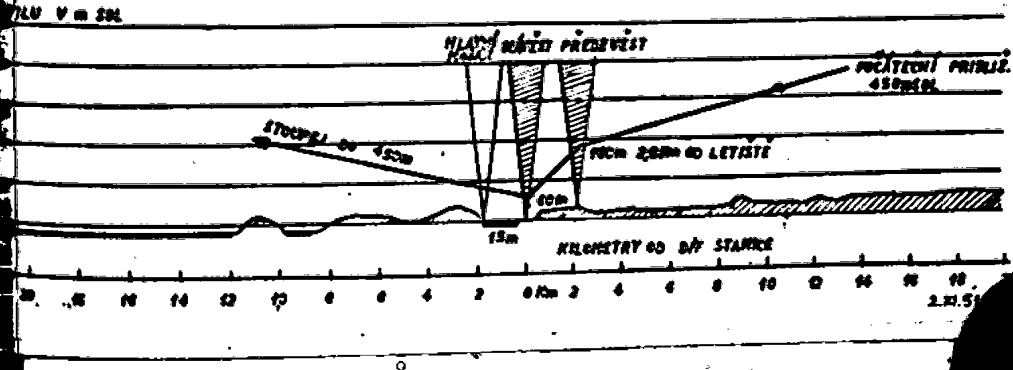
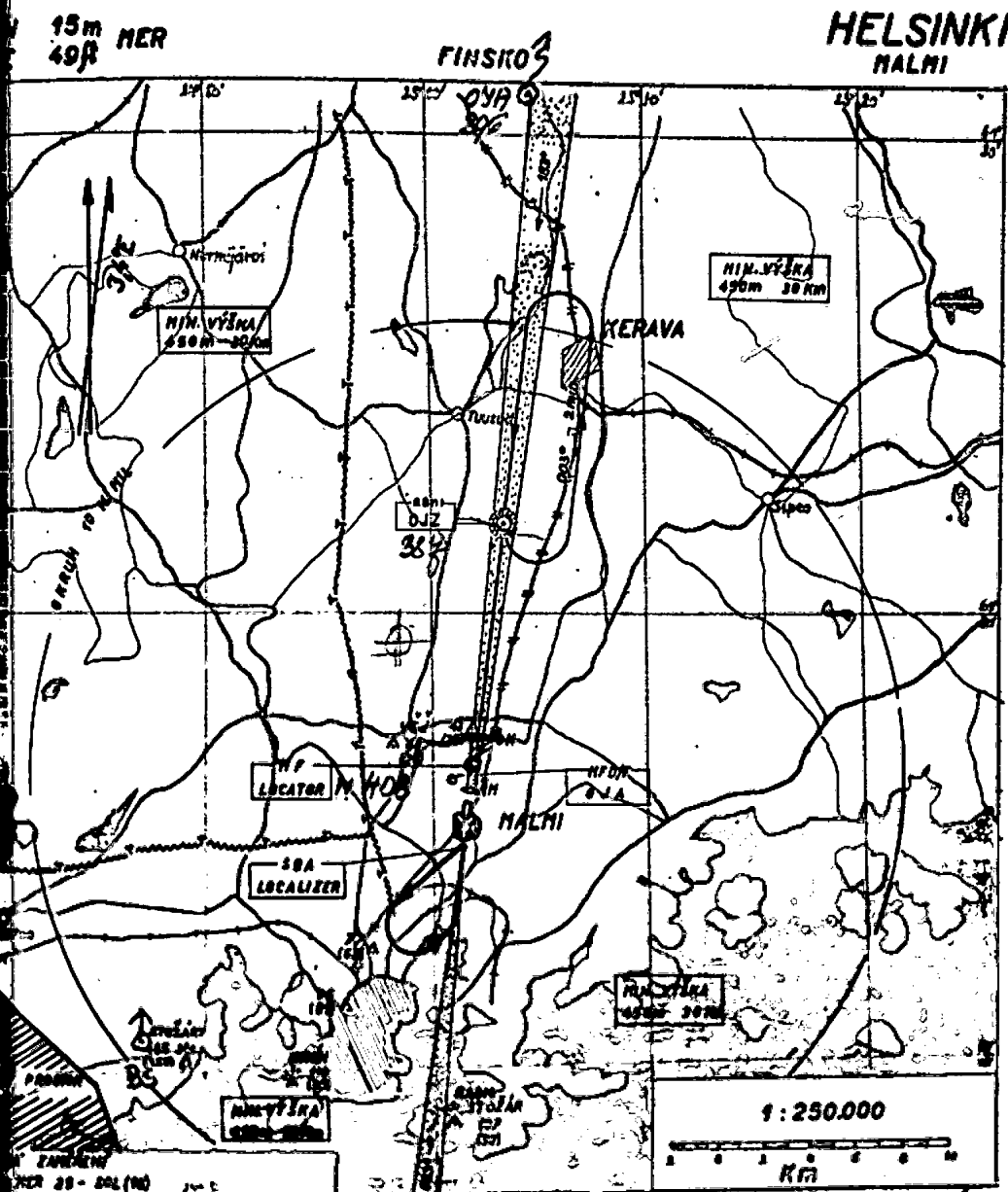
LIGHTING: APPROACH LIGHTS, RWY LIGHTS, OBSTRUCTION
LIGHTS

RADIO: HF RT, HF WT, HF DF, RBn, ROZHLAS

RADIO: HF RT, HF WT, HF DF, RBn, BROADCASTER

1. XI. 80. 198

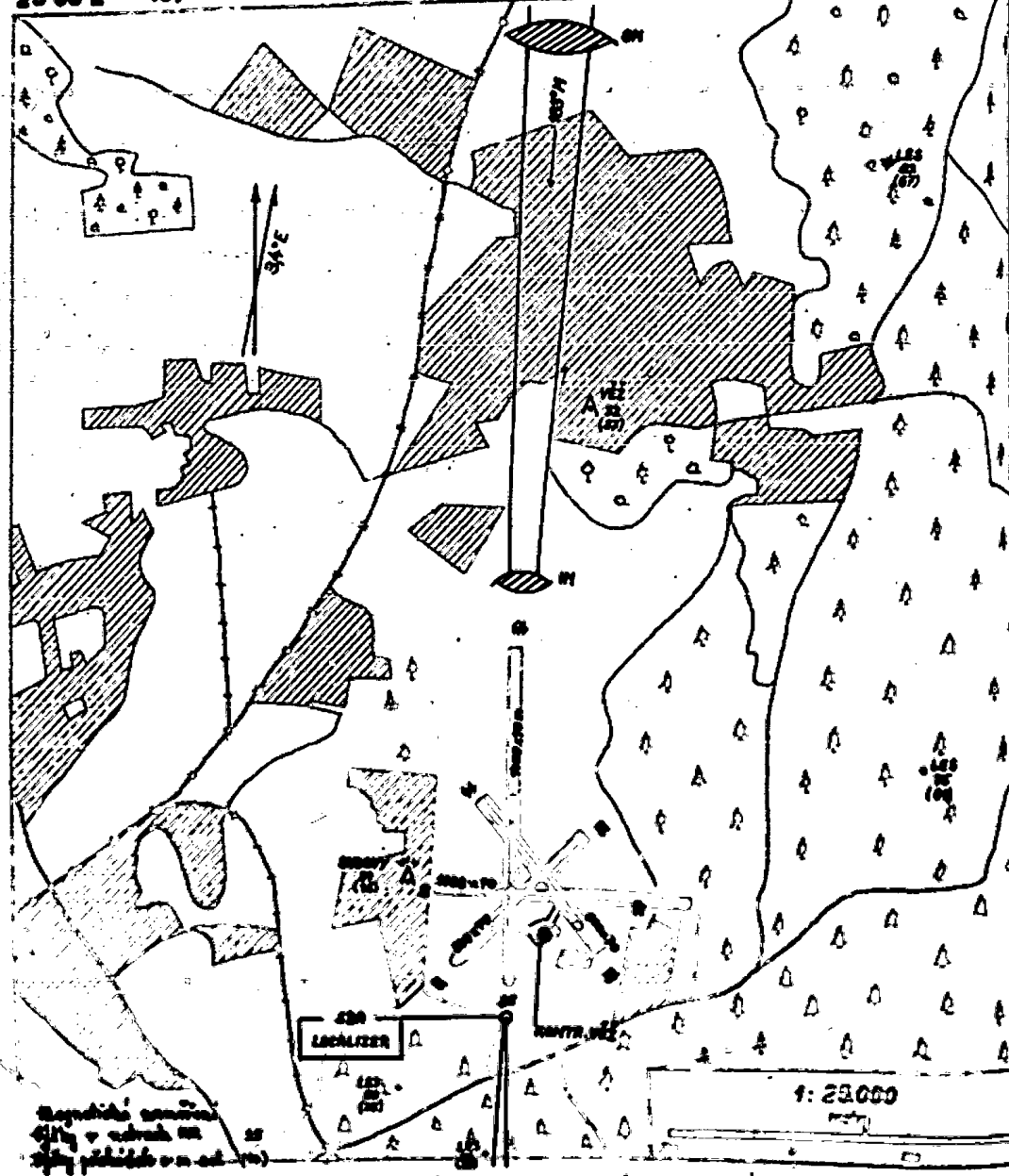
25. 2. 98



60°45'N 15° MER
25°03'E 498

FINSKO

HELSINKI
FIKRI



Mapa letiště
s výškovými údaji
a s údaji o stavu letiště

1:25000

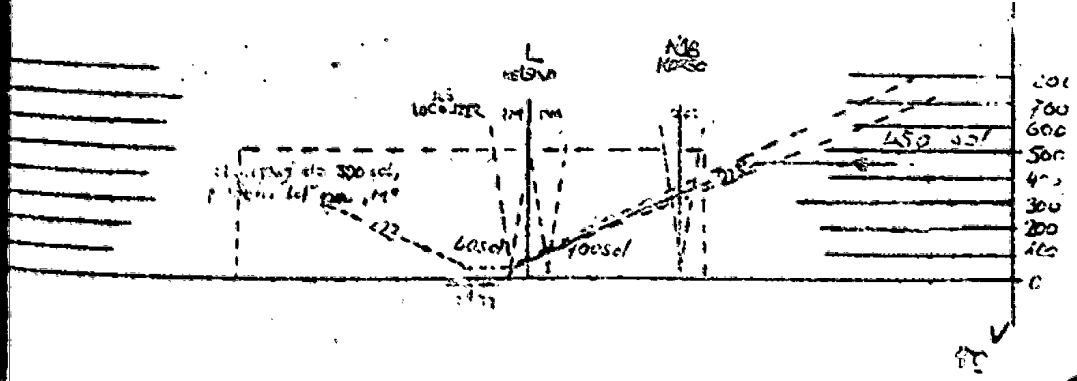
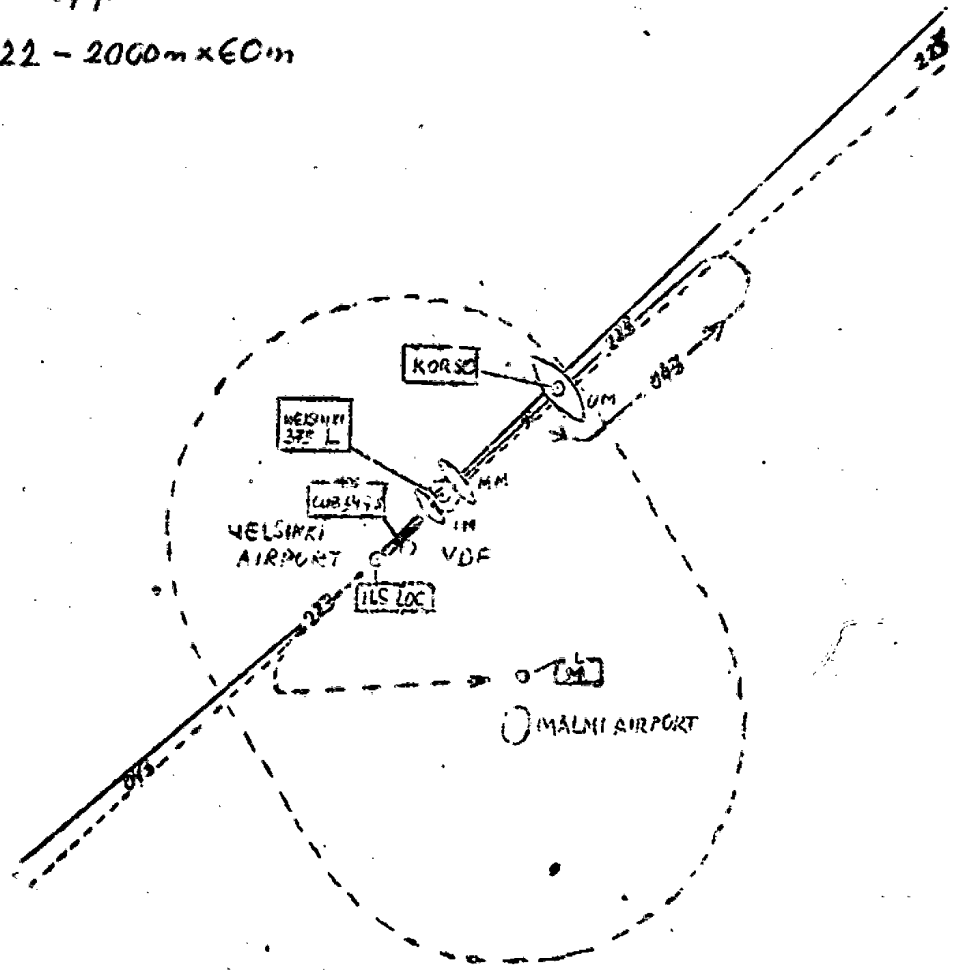
- Druh : civilní a celní letiště
- Povrch : startovací dráhy betonové, ostatní povrch travnatý
- Osvětlení : dráhová světla nízké intenzity na R/W 18 - 36, světelný maják, světelné "T", hranicní a překřížková světla, příbl. světla
- Radio : VHF RT, HF RT, HF WT, HF DP, HF WT, Ebn, SBA, rozhlas
- Obsluha : pohonné hmoty a olej, hangáry, opravy.

ČSA 11.11.42

HELSINKI - OF HK

PAN 51m Mer
SBE 167ft

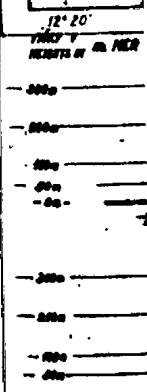
N. 04-22 - 2060m x 60m





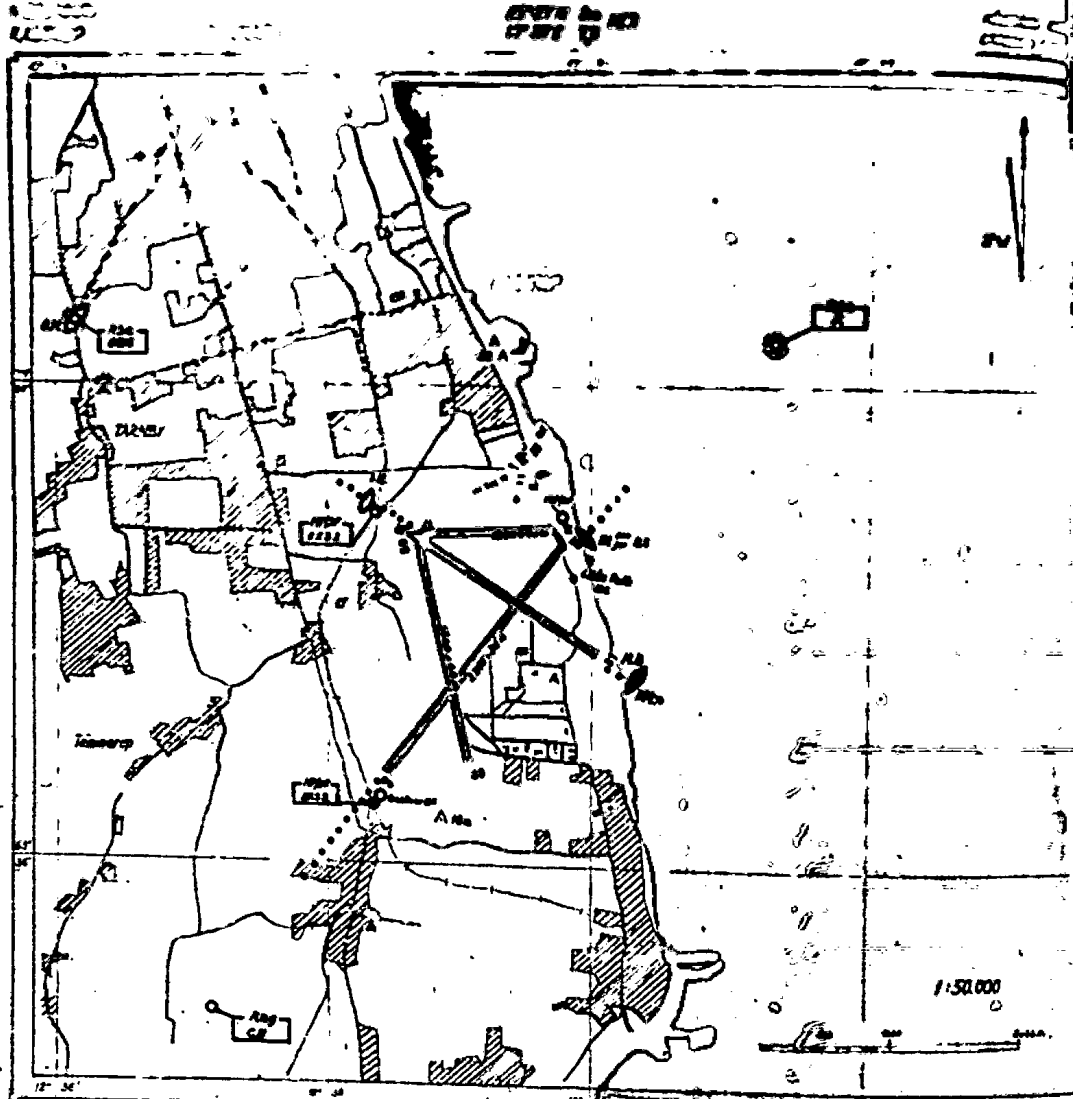
CELNÍ A PÁSOK SLUŽBA, TRÁTOVÍ PŘEPRAVA, POUKONNÉ HROTY, OBSLUHA LETADEL
 UBYTOVÁNÍ CESTUJÍCÍCH.
 OSVĚTLENÍ: PŘÍBLÍŽNĚ K RAM NA R/VN 04, 22, 30, PRÁMOVÝ SVĚTLA, DRÁHOVÝ
 SVĚTLA, ČERNÁ PŘEKÁŽKOVÁ SVĚTLA NA POZÍČKÁCH DRÁHOVÝCH,
 SVĚTLA MALÁK.
 RADIO: VHF RT, VHF DF, HF RT, HF DF, HF MT, HF MF, R/A, R/B, R/C, R/D, R/E, R/F, R/G, R/H, R/I, R/J, R/K, R/L, R/M, R/N, R/O, R/P, R/Q, R/R, R/S, R/T, R/U, R/V, R/W, R/X, R/Y, R/Z.
 POJINÁKA: NA DRÁHOVÝCH PŘEPRAVÁCH A NA RÁDIOVÝCH

CUSTOMS AND IMMIGRATION, BAGGAGE, FREIGHT AND PASSENGER, PASSENGER
 HANDLING.
 LIGHTING: APPROACH LIGHTS ON R/VN 04, 22, 30, THRESHOLD LIGHTS,
 RED OBSTRUCTION LIGHTS, TAXIWAY LIGHTS, LIGHT BEACON.
 RADIO: VHF RT, VHF DF, HF RT, HF DF, HF MT, HF MF, R/A, R/B, R/C, R/D, R/E, R/F, R/G, R/H, R/I, R/J, R/K, R/L, R/M, R/N, R/O, R/P, R/Q, R/R, R/S, R/T, R/U, R/V, R/W, R/X, R/Y, R/Z.



DEF	CSA	500m	CSO	800m	NOG	800m	CCO	800m	ABA	800m
DAY	CSB	800m	800m	NIGHT	800m	800m	800m	800m	800m	800m

CSA 22.8.1950 A1



CELNÍ A PÁSŮVÍ SLUŽBA, TRATOVÁ PŘÍPRAVA, POHONNÉ HMOTY, OBSLUHA LETADEL
 EXISTUJÍCÍ ČESTIČKÁŘI.
 OSVĚTLENÍ: PŘÍBLÍŽ. ŘÁDKY NA R01, R2, R3, R4. PRÁVNÍ SVĚTLA, BRÁNOVÁ
 SVĚTLA, ČERNÁ PŘEKAZKOVÁ SVĚTLA NA POJÍZD. DRÁHÁCH,
 SVĚTL. PÁJÍK.
 RADIO: R01 RT, R02 RT, R03 RT, R04 RT, R05 RT, R06, R07, R08, R09, R10, R11, R12, R13, R14, R15, R16, R17, R18, R19, R20, R21, R22, R23, R24, R25, R26, R27, R28, R29, R30, R31, R32, R33, R34, R35, R36, R37, R38, R39, R40, R41, R42, R43, R44, R45, R46, R47, R48, R49, R50, R51, R52, R53, R54, R55, R56, R57, R58, R59, R60, R61, R62, R63, R64, R65, R66, R67, R68, R69, R70, R71, R72, R73, R74, R75, R76, R77, R78, R79, R80, R81, R82, R83, R84, R85, R86, R87, R88, R89, R90, R91, R92, R93, R94, R95, R96, R97, R98, R99, R100.
 POZNÁMKA: NA BRÁNĚ 04 PŘÍPRAVA A LA BILANČOVÁNÍ

CUSTOMS AND IMMIGRATION, BAGGAGE, FUEL AND OIL, MAINTENANCE, PASSENGER
 HANDLING.
 LIGHTING - APPROACH LIGHTS BY R01, R2, R3, R4. THRESHOLD LIGHTS,
 AND OBSTRUCTION LIGHTS, TAXIWAY LIGHTS, LIGHT BEACON.
 RADIO: R01 RT, R02 RT, R03 RT, R04 RT, R05 RT, R06, R07, R08, R09, R10, R11, R12, R13, R14, R15, R16, R17, R18, R19, R20, R21, R22, R23, R24, R25, R26, R27, R28, R29, R30, R31, R32, R33, R34, R35, R36, R37, R38, R39, R40, R41, R42, R43, R44, R45, R46, R47, R48, R49, R50, R51, R52, R53, R54, R55, R56, R57, R58, R59, R60, R61, R62, R63, R64, R65, R66, R67, R68, R69, R70, R71, R72, R73, R74, R75, R76, R77, R78, R79, R80, R81, R82, R83, R84, R85, R86, R87, R88, R89, R90, R91, R92, R93, R94, R95, R96, R97, R98, R99, R100.
 NOTE: R01 ON TRAILER DOWN BLINDING WHITE LINE

NOVÝRA	CSA	CSB	CSA	CSB	CSA	CSB	CSA	CSB
DEV	CSA	3000 m	3000 m	NOC	3000 m	3000 m	CSA	3000 m
DAY	CSB	300 m	300 m	NIGHT	300 m	300 m	CSA	3000 m

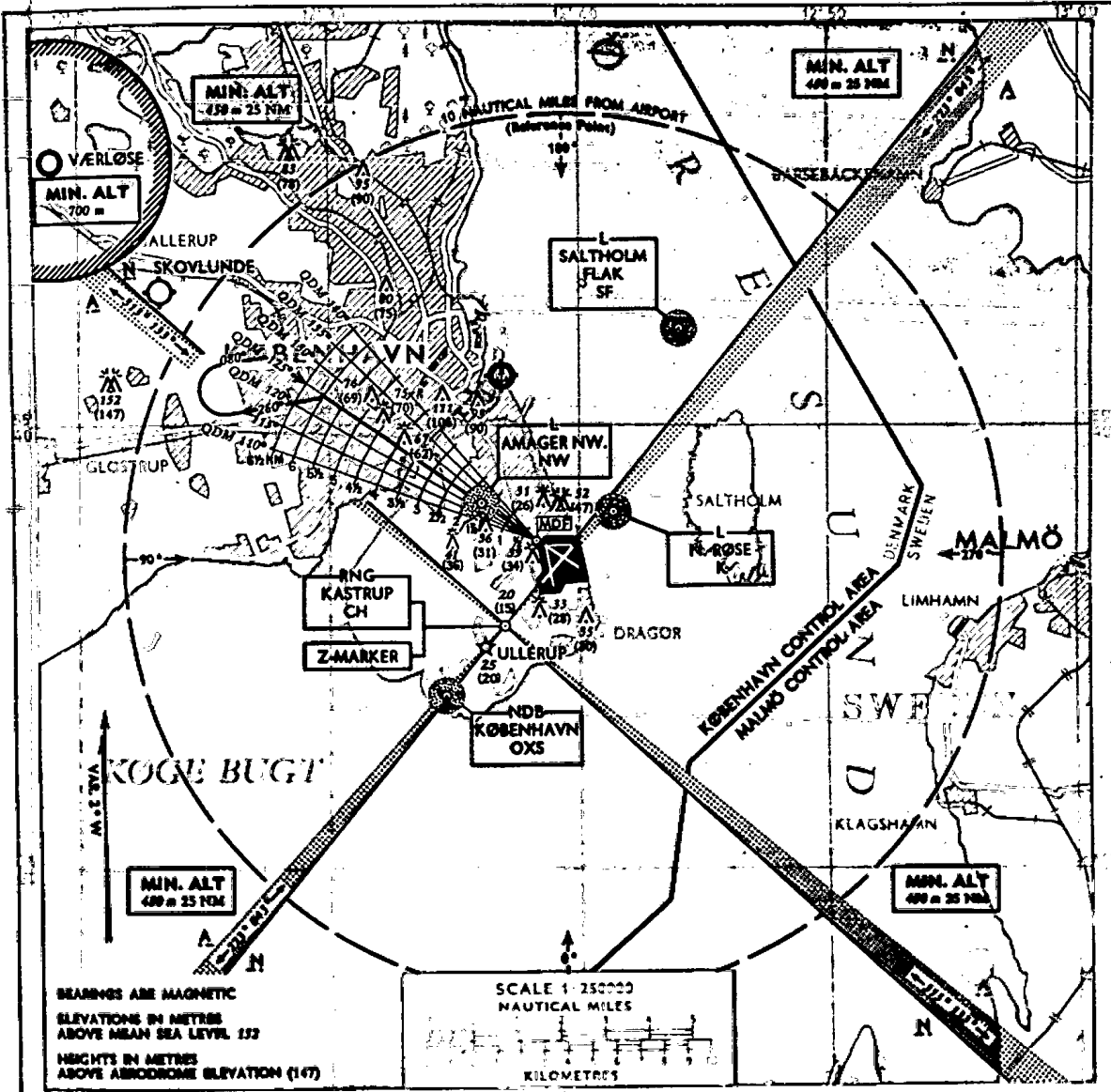


VÝŠKY
 PROFILI
 CSB 8.V.61.

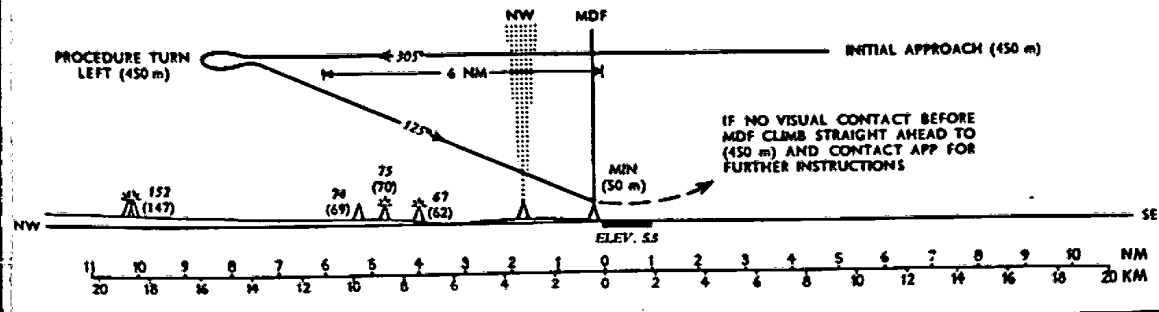
INSTRUMENT APPROACH CHART

**QDM(QUX)/QGE (125°)
KØBENHAVN AIRPORT
KASTRUP, DENMARK**

ELEV 5.5 m



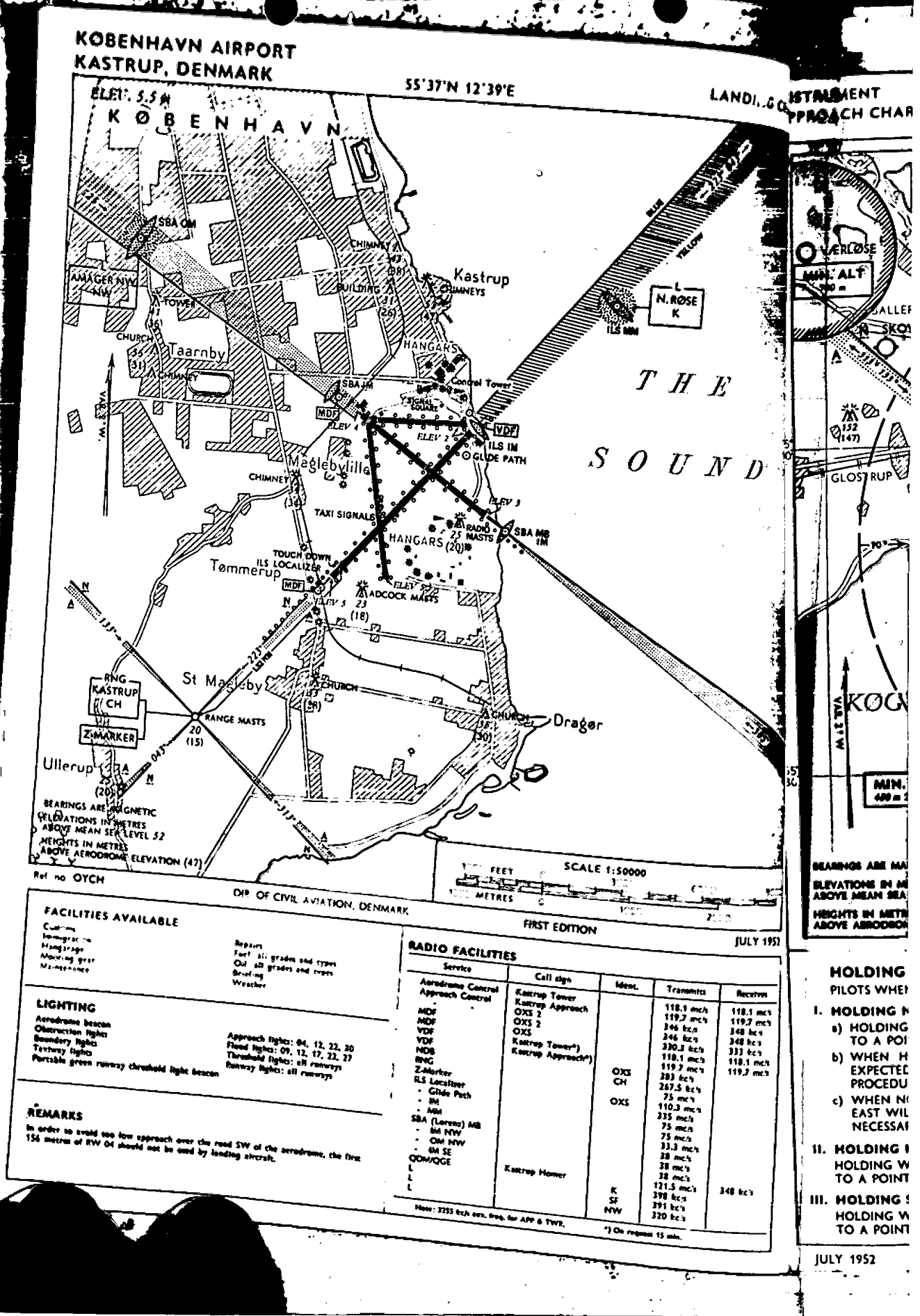
QDM(QUX)/QGE (125°) APPROACH PROCEDURE



OFFICIAL	Q/100m	Q/100m			
	50/800m	50/1000m			

JULY 1952 20 000 000 DENMARK FIRST EDITION OYCH QDM(QUX)/QGE-125

27. 2.1950. 22.



BEARINGS ARE MAGNETIC
 ELEVATIONS IN METRES
 ABOVE MEAN SEA LEVEL 52
 HEIGHTS IN METRES
 ABOVE AERODROME ELEVATION (47)

Ref no OYCH

DIP. OF CIVIL AVIATION, DENMARK

SCALE 1:50000
 METRES

FIRST EDITION

JULY 1952

FACILITIES AVAILABLE

- Catering
- Immigration
- Hangars
- Moving gear
- Maintenance
- Repairs
- Fuel all grades and types
- Out all grades and types
- Drafting
- Weather

LIGHTING

- Aerodrome beacon
- Obstruction lights
- Boundary lights
- Taxiway lights
- Portable green runway threshold light beacon
- Approach lights: 04, 12, 22, 20
- Flare lights: 09, 12, 17, 22, 27
- Threshold lights: all runways
- Runway lights: all runways

REMARKS

In order to avoid too low approach over the road SW of the aerodrome, the first 150 metres of RW 04 should not be used by landing aircraft.

RADIO FACILITIES

Service	Call sign	Ident.	Transmits	Receives
Aerodrome Control	Kastrup Tower		118.1 mc/s	118.1 mc/s
Approach Control	Kastrup Approach		119.7 mc/s	119.7 mc/s
MDF	OXS 2		246 kc/s	246 kc/s
MDF	OXS 2		246 kc/s	246 kc/s
VDF	OXS		330.3 kc/s	333 kc/s
MDF	Kastrup Tower*)		118.1 mc/s	118.1 mc/s
RNG	Kastrup Approach*)		119.7 mc/s	119.7 mc/s
Z-Marker		OXS	393 kc/s	
ILS Localizer		OXS	267.5 kc/s	
- Glide Path			75 mc/s	
- IM			75 mc/s	
- MM			335 mc/s	
SBA (Lorenz) MB			75 mc/s	
- 04 NW			75 mc/s	
- 04 NW			33.3 mc/s	
- 04 SE			38 mc/s	
QOM/QOE			38 mc/s	
L			38 mc/s	
L			121.5 mc/s	
L			398 kc/s	
L			391 kc/s	
L			320 kc/s	
	Kastrup Home	K		348 kc/s
		SF		
		NW		

Note: 7255 kc/s. freq. for APP & TWR.

* On request 15 min.

BEARINGS ARE MAGNETIC
 ELEVATIONS IN METRES
 ABOVE MEAN SEA LEVEL
 HEIGHTS IN METRES
 ABOVE AERODROME ELEVATION

HOLDING
 PILOTS WHEN

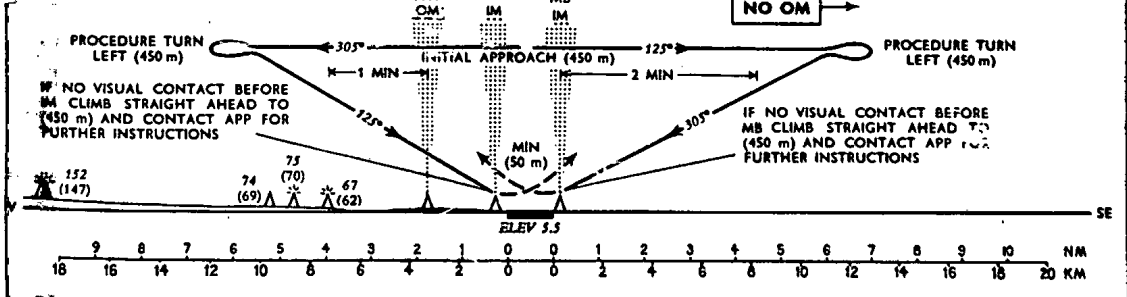
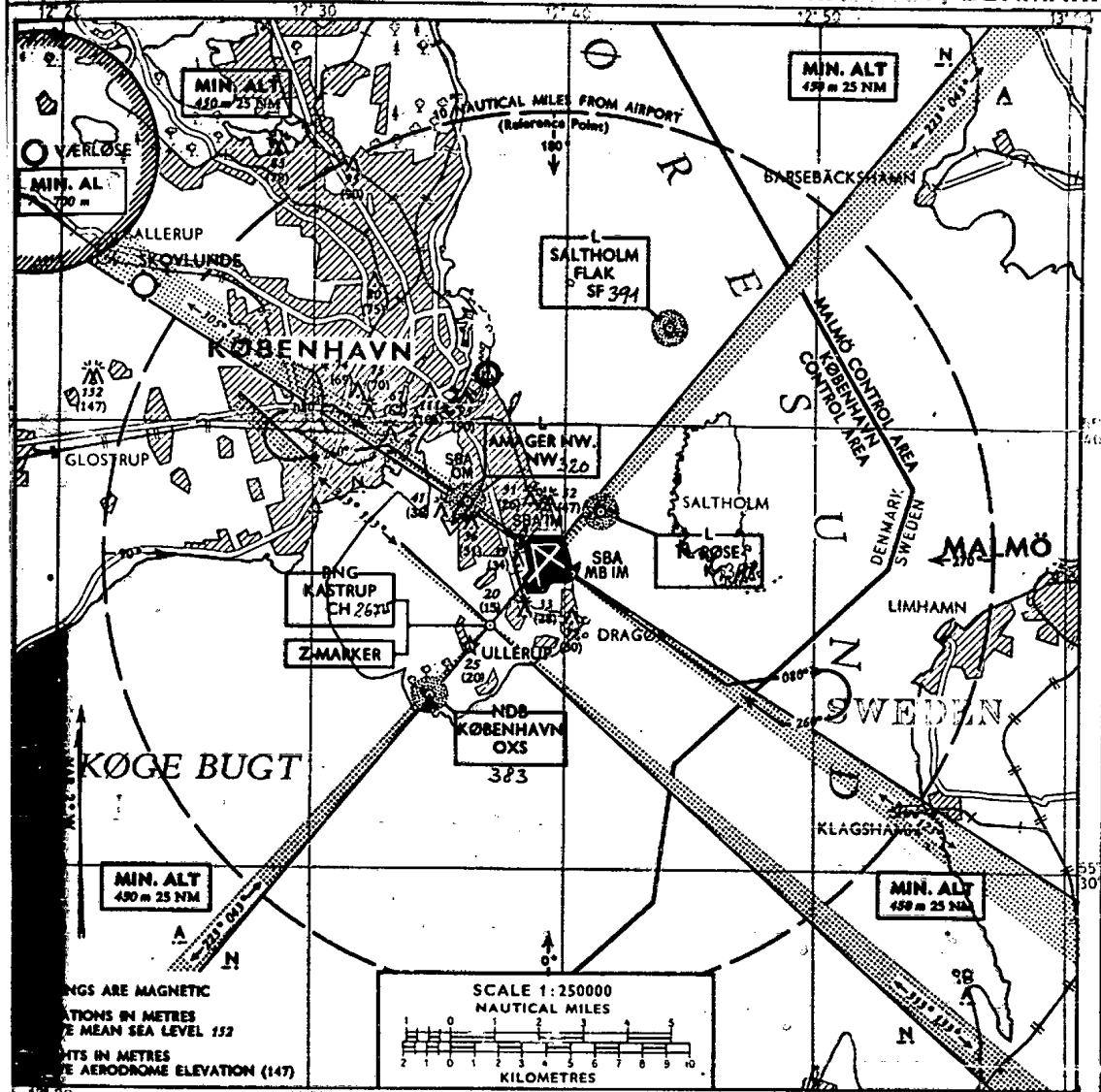
- I. HOLDING IN
 a) HOLDING TO A POINT
 b) WHEN H EXPECTED PROCEDURE
 c) WHEN NOT EAST WIND NECESSARY
- II. HOLDING IN
 HOLDING W TO A POINT
- III. HOLDING IN
 HOLDING W TO A POINT

JULY 1952

INSTRUMENT APPROACH CHART

**SBA (125° and 305°)
KØBENHAVN AIRPORT
KASTRUP, DENMARK**

ELEV 5.5 m

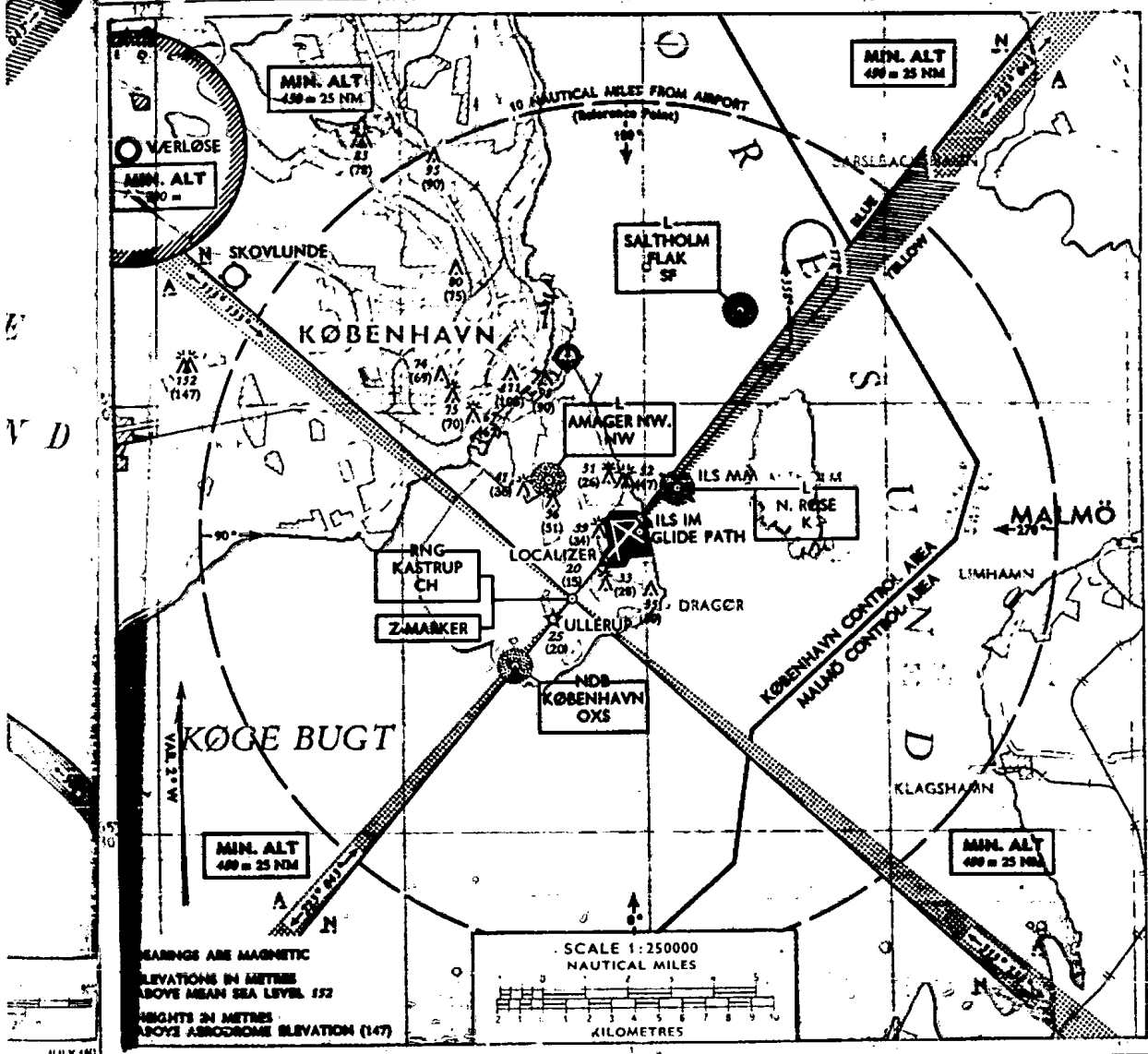


DIR. OF CIVIL AVIATION, DENMARK FIRST EDITION Ref. no. OYCH SBA

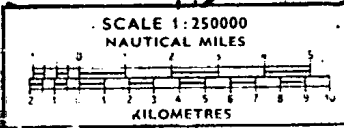
INSTRUMENT APPROACH CHART

KØBENHAVN ILS (223°)
KASTRUP, DENMARK

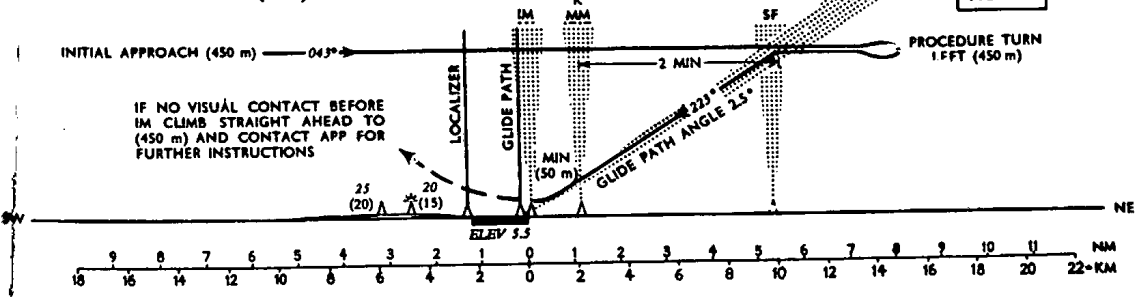
ELEV 5.5 m



READINGS ARE MAGNETIC
ELEVATIONS IN METRES
ABOVE MEAN SEA LEVEL 152
HEIGHTS IN METRES
ABOVE AERODROME ELEVATION (147)



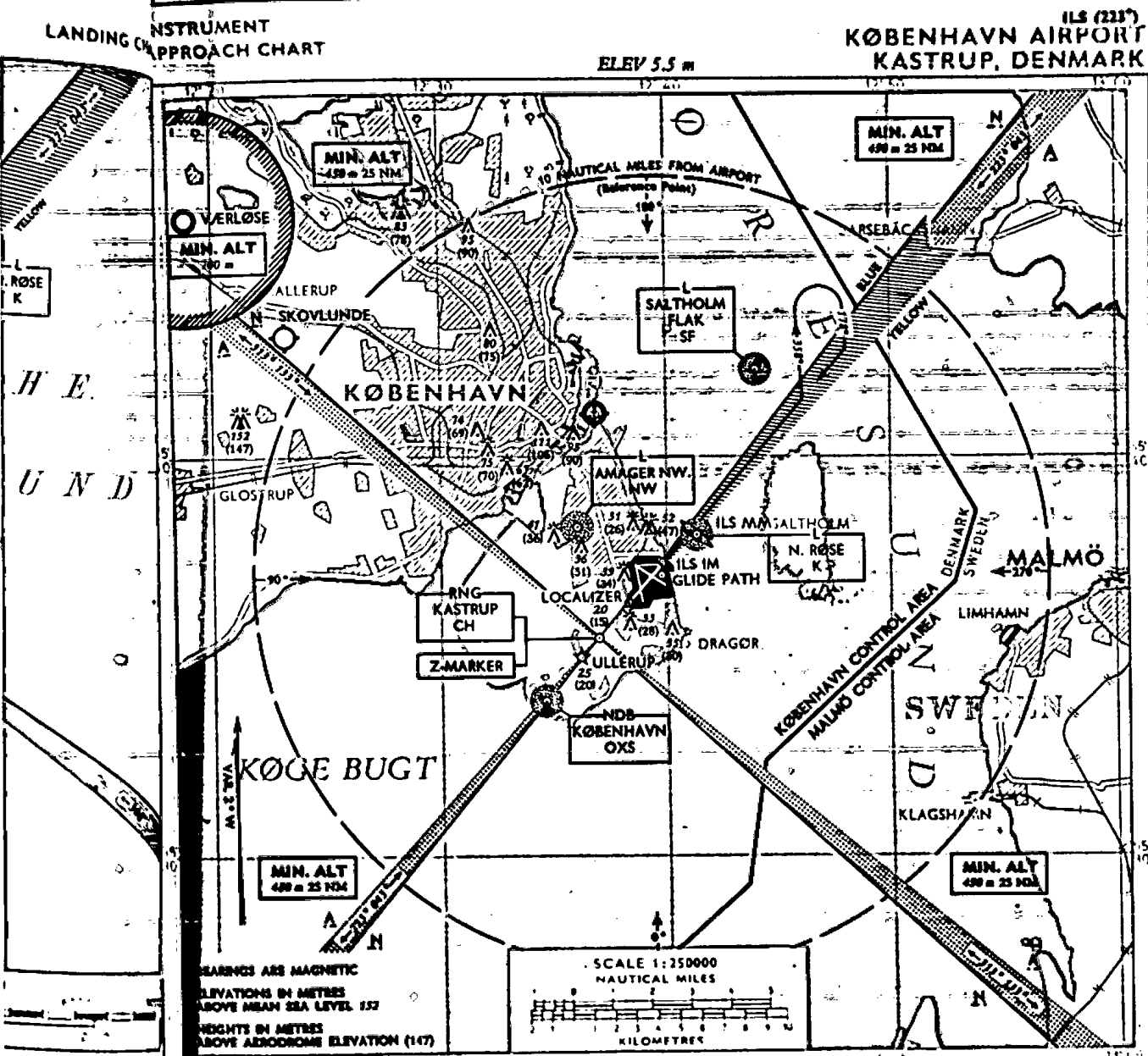
PROFILE OF ILS (223°) APPROACH PROCEDURE



OFFICIAL CEILING AND VISIBILITY MINIMA		TIME - FUEL - DISTANCE						
TIME	DAY	NIGHT	90 KNOTS	100 KNOTS	120 KNOTS	150 KNOTS	NAUTICAL MILES	
CEILING	DAY	NIGHT	MIN	SEC	MIN	SEC	MIN	SEC
	DAY	NIGHT	MIN	SEC	MIN	SEC	MIN	SEC

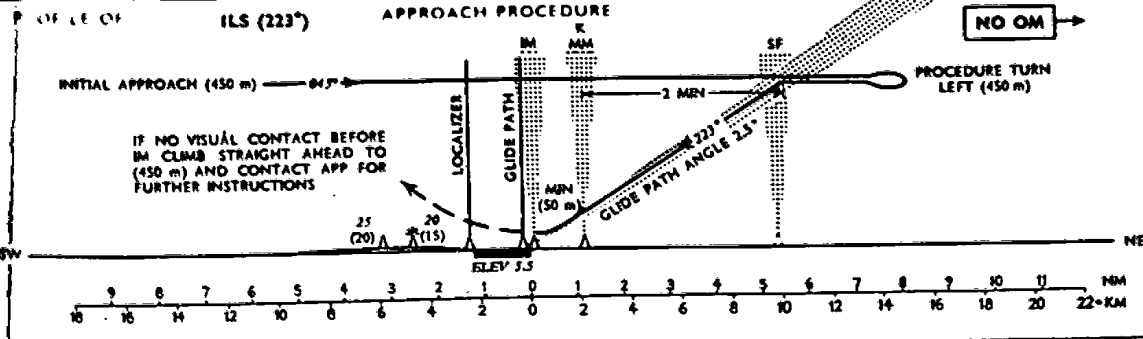
JULY 1952 DIR. OF CIVIL AVIATION, DENMARK FIRST EDITION Ref. no OYCH ILS-223

87. X. 1950. W.G.



JULY 1952

Transmit	Receive
118.1 mcs	118.1 mcs
119.7 mcs	119.7 mcs
346 hcs	346 hcs
348 hcs	348 hcs
330.3 hcs	333 hcs
118.1 mcs	118.1 mcs
119.7 mcs	119.7 mcs
302 hcs	
267.5 hcs	
75 mcs	
118.1 mcs	
335 mcs	
75 mcs	
75 mcs	
33.3 mcs	
38 mcs	
38 mcs	
38 mcs	
121.5 mcs	248 hcs
390 hcs	
391 hcs	
320 hcs	



TYPE	OFFICIAL		TIME TO FALL DISTANCE NAUTICAL MILES			
	0/100m	0/100m	100 KNOTS	120 KNOTS	150 KNOTS	200'S
U	50/800m	50/1000m	MN	SE	MN	SEC

JULY 1952

DIR. OF CIVIL AVIATION, DENMARK

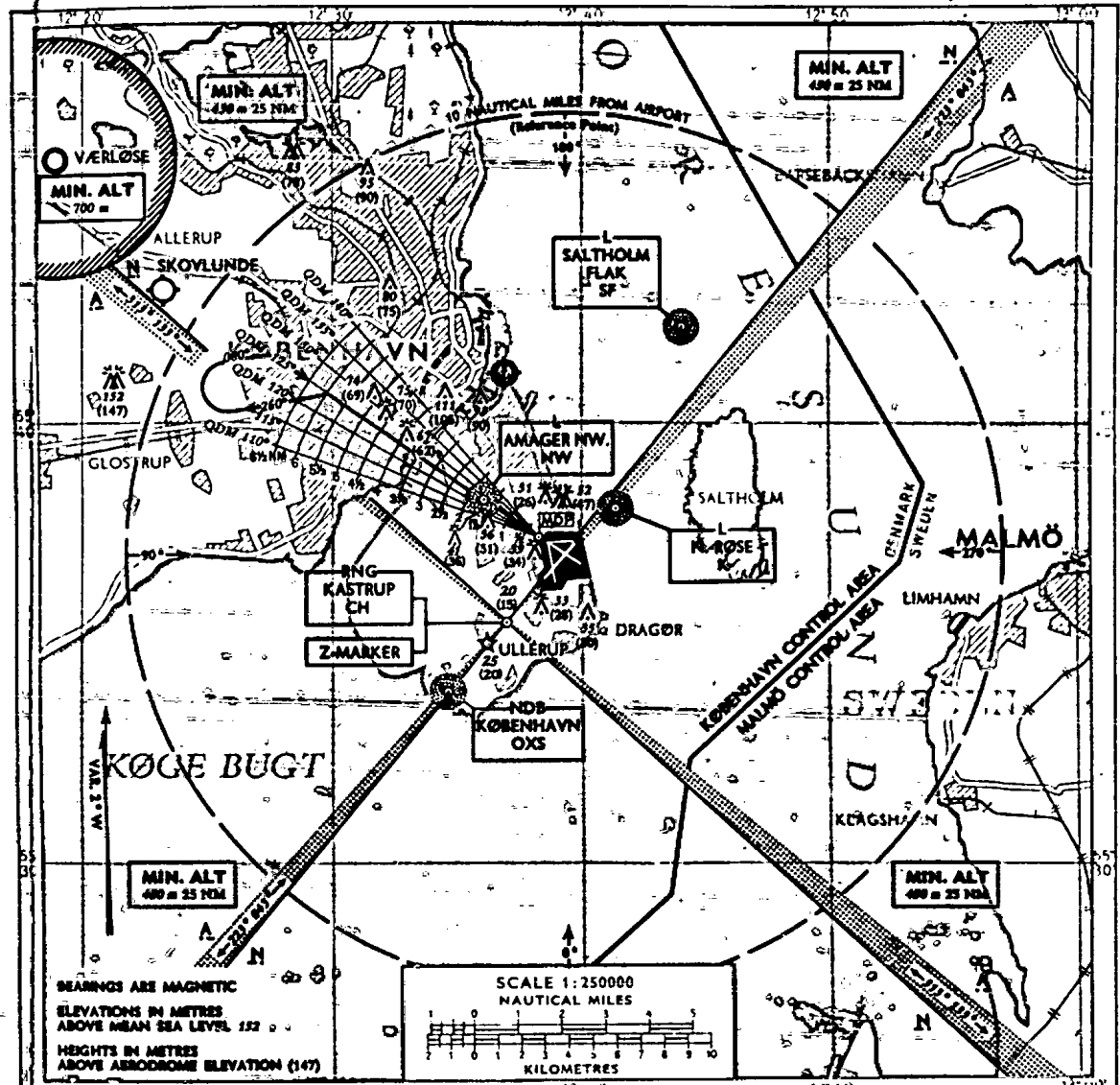
FIRST EDITION Ref no OYCH ILS-223

47.3.1950. 88

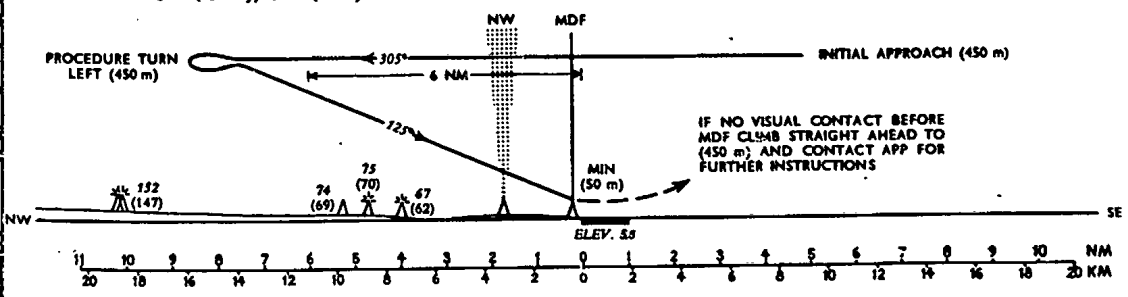
INSTRUMENT APPROACH CHART

**QDM(QUX)/QGE (125°)
KØBENHAVN AIRPORT
KASTRUP, DENMARK**

ELEV 5.5 m



PROFILE OF QDM(QUX)/QGE (125°) APPROACH PROCEDURE



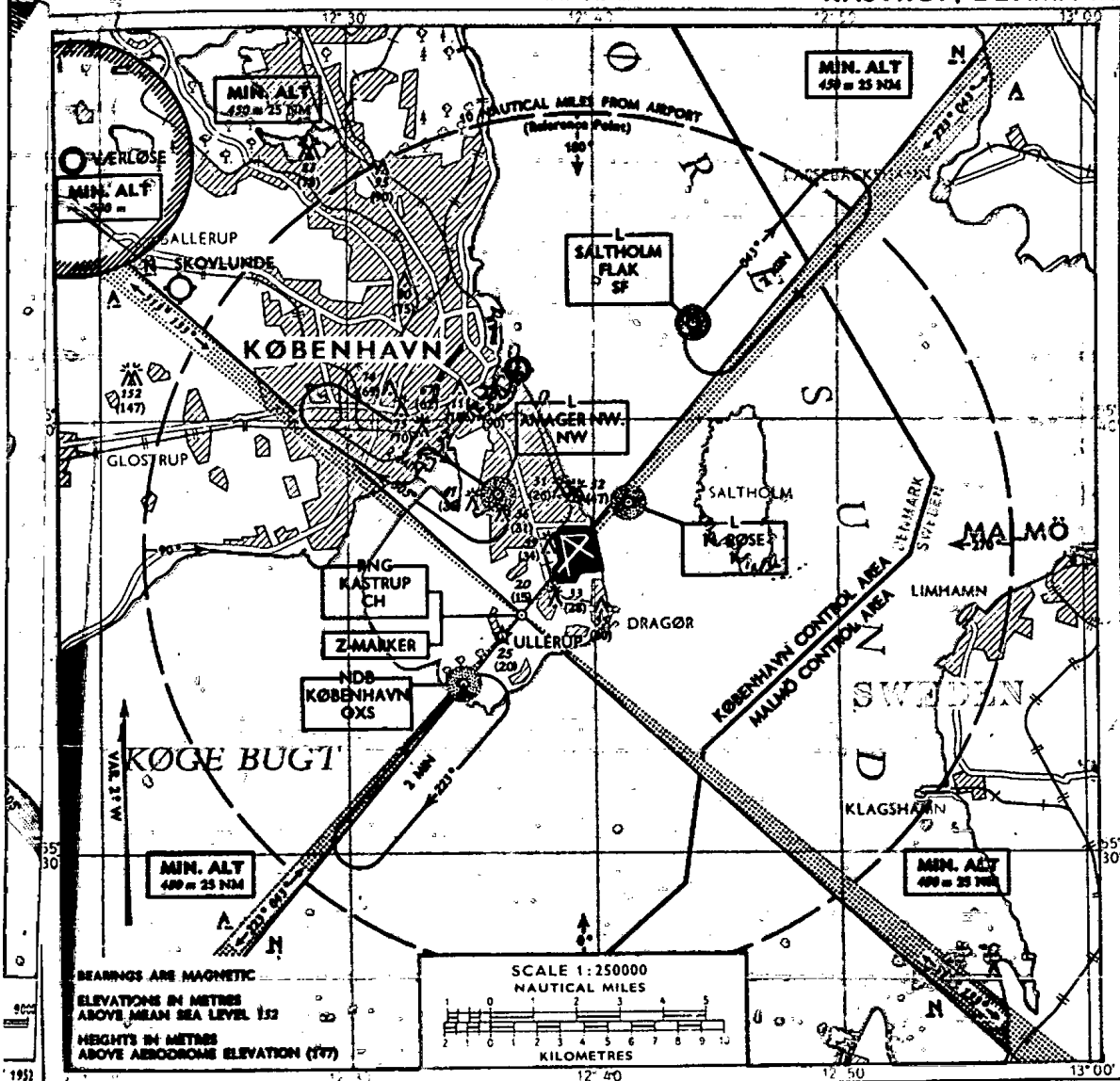
OFFICIAL CEILING AND VISIBILITY MINIMA		WINDSPEEDS		TIME TO FIELD - DISTANCE				NAUTICAL MILES	
TAKE OFF - DAY	NIGHT	90 KNOTS	100 KNOTS	120 KNOTS	150 KNOTS	KNOTS			
LANDING - DAY	NIGHT	MIN	SEC	MIN	SEC	MIN	SEC	MIN	SEC
Q/100m	Q/100m								
50/800m	50/1000m								

JULY 1952 DIR. OF CIVIL AVIATION DENM. FIRST EDITION Ref. no OYCH QDM(QUX)/QGE-125

INSTRUMENT APPROACH CHART

HOLDING PROCEDURES
KØBENHAVN AIRPORT
KASTRUP, DENMARK

ELEV 5.5 m



HOLDING PROCEDURES, OYCH

PILOTS WHEN REQUESTED TO HOLD, WILL NORMALLY BE INSTRUCTED TO USE ONE OF THE FOLLOWING HOLDING PATTERNS.

I. HOLDING NE.

- a) HOLDING WILL BE EXECUTED AT ALTITUDES (450 m), 750 m, 1050 m etc. IN A "RACE COURSE" PATTERN FROM BEACON SF TO A POINT 2 MINUTES TO THE NORTHEAST.
- b) WHEN HOLDING AND UPON BECOMING NUMBER TWO TO LAND, PILOTS WILL, WHENEVER POSSIBLE, BE GIVEN AN EXPECTED APPROACH TIME ABEAM OF THE BEACON SF, AND THEY SHOULD ENDEAVOUR TO ARRANGE THEIR HOLDING PROCEDURE TO REACH THE BEACON AS NEAR TO THE EXPECTED APPROACH TIME AS POSSIBLE.
- c) WHEN NO DELAY IS EXPECTED, PILOTS APPROACHING KASTRUP AIRPORT IN IFR CONDITIONS FROM THE NORTH AND EAST WILL BE GIVEN PERMISSION, WHENEVER POSSIBLE, TO CARRY OUT STRAIGHT-IN APPROACHES. WHEN HOLDING IS NECESSARY, PILOTS WILL BE GIVEN AN ALTITUDE AT WHICH THEY ARE TO APPROACH THE PATTERN AND HOLD.

II. HOLDING NW.

HOLDING WILL BE EXECUTED AT ALTITUDES (450 m), 750 m, 1050 m etc. IN A "RACE COURSE" PATTERN FROM BEACON NW TO A POINT 2 MINUTES TO THE NORTHWEST.

III. HOLDING SW.

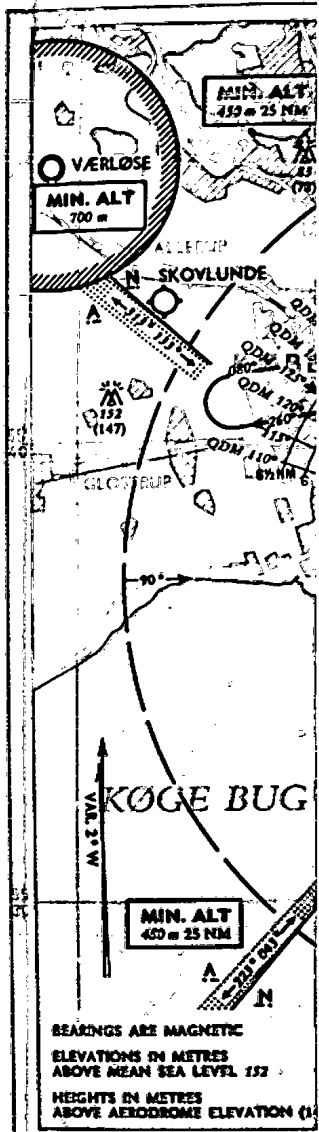
HOLDING WILL BE EXECUTED AT ALTITUDES (450 m), 750 m, 1050 m etc. IN A "RACE COURSE" PATTERN FROM BEACON OXS TO A POINT 2 MINUTES TO THE SOUTHWEST.

JULY 1952

DIR. OF CIVIL AVIATION, DENMARK

FIRST EDITION Ref. no. OYCH HOLDING

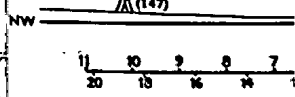
**INSTRUMENT
APPROACH CHART**



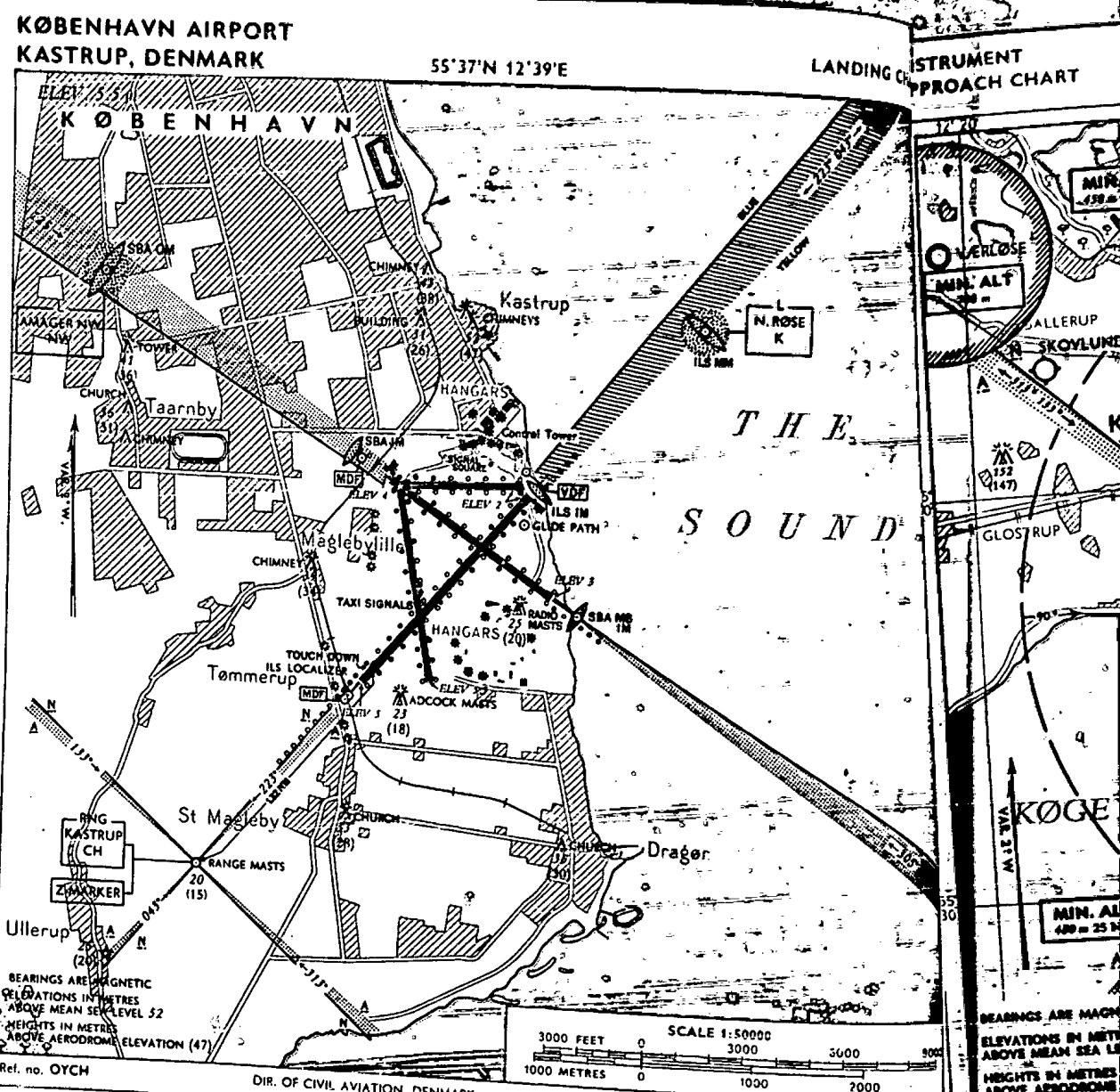
PROFILE OF QDM(QUX)/QNH

**PROCEDURE TURN
LEFT (450 m)**

**132
(147)**



OFFICIAL CEILING AND	
TAKE OFF DAY	0/100m
LANDING DAY	50/500m
JULY 1952	



Ref. no. OYCH DIR. OF CIVIL AVIATION, DENMARK FIRST EDITION JULY 1952

FACILITIES AVAILABLE

Customs
Immigration
Hangarage
Mooring gear
Maintenance

Repairs
Fuel: all grades and types
Oil: all grades and types
Briefing
Weather

LIGHTING

Aerodrome beacon
Obstruction lights
Boundary lights
Taxiway lights
Portable green runway threshold light beacon

Approach lights: 04, 12, 22, 30
Flood lights: 09, 12, 17, 22, 27
Threshold lights: all runways
Runway lights: all runways

REMARKS

In order to avoid too low approach over the road SW of the aerodrome, the first 156 metres of RW 04 should not be used by landing aircraft.

RADIO FACILITIES

Service	Call sign	Ment.	Transmits	Receives
Aerodrome Control	Kastrup Tower		118.1 mch	118.1 mch
Approach Control	Kastrup Approach		119.7 mch	119.7 mch
MDF	OXS 2		346 kcp	348 kcp
MDF	OXS 2		346 kcp	348 kcp
VDF	Kastrup Tower*)		118.1 mch	118.1 mch
VDF	Kastrup Approach*)		119.7 mch	119.7 mch
NDB			283 kch	
Ring		OXS	267.5 kch	
Z-Marker		OXS	75 mch	
ILS Localizer			110.3 mch	
- Glide Path			72 mch	
- IM			33.3 mch	
- MM			38 mch	
SBA (Lorenz) MB			38 mch	
- IM NW			38 mch	
- OM NW			38 mch	
- IM SE			38 mch	
QDM/QDE	Kastrup Homer		121.5 mch	348 kch
		K	320 kch	
		SF	391 kch	
		NW	320 kch	

Notes: *) On request 15 min.

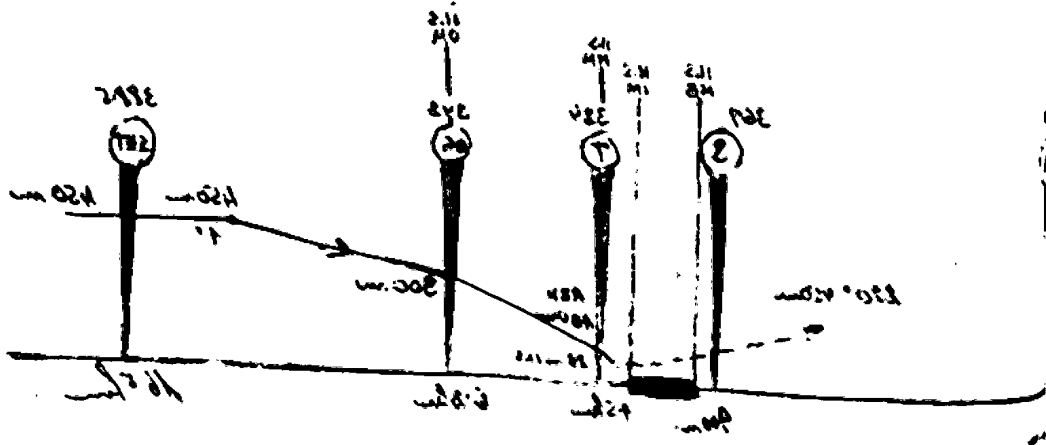
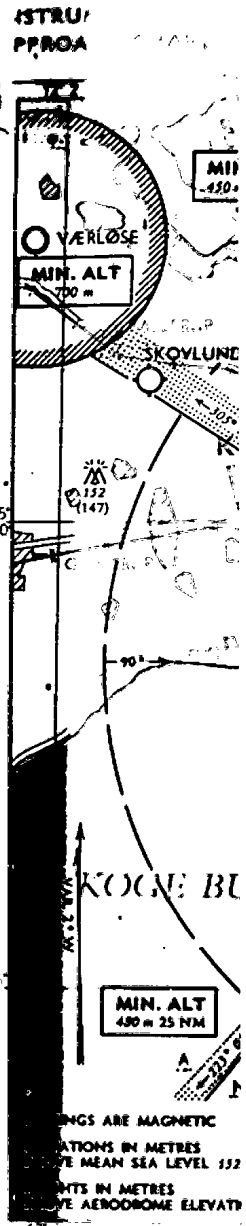
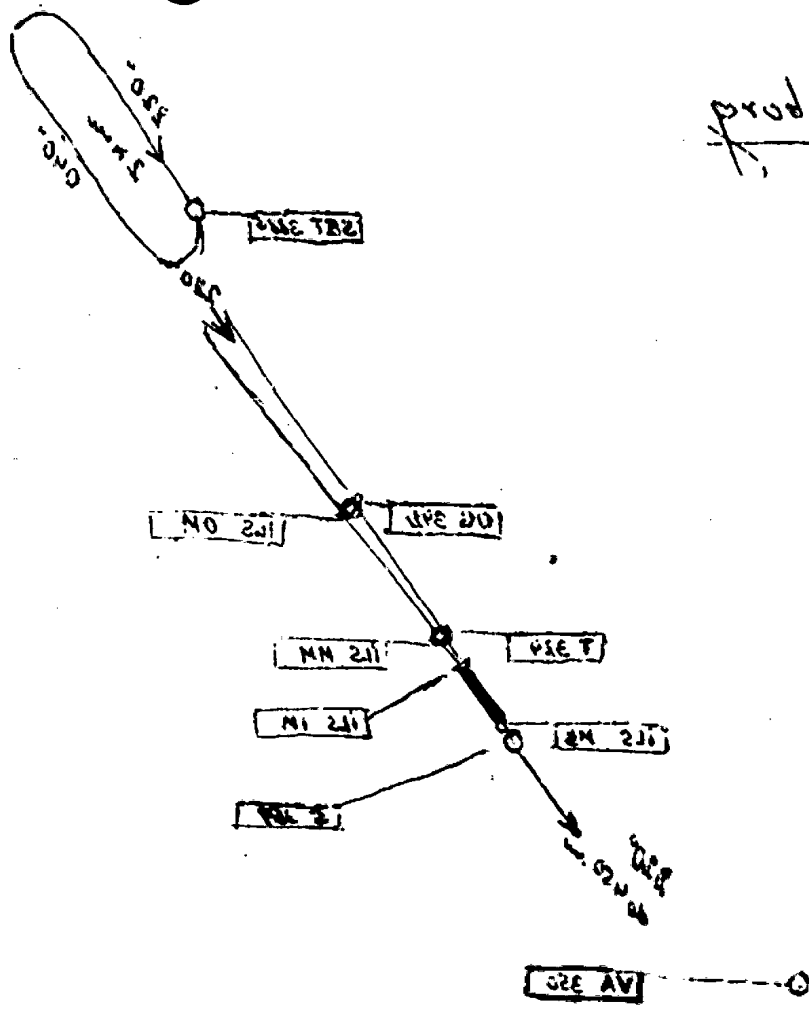
HOLDING P
PILOTS WHEN I

I. HOLDING NE
a) HOLDING V
TO A POINT
b) WHEN HO
EXPECTED
PROCEDURE
c) WHEN NO
EAST WILL
NECESSARY

II. HOLDING N
HOLDING WI
TO A POINT

III. HOLDING S
HOLDING WI
TO A POINT

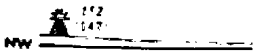
JULY 1952



PROF SBA (125')

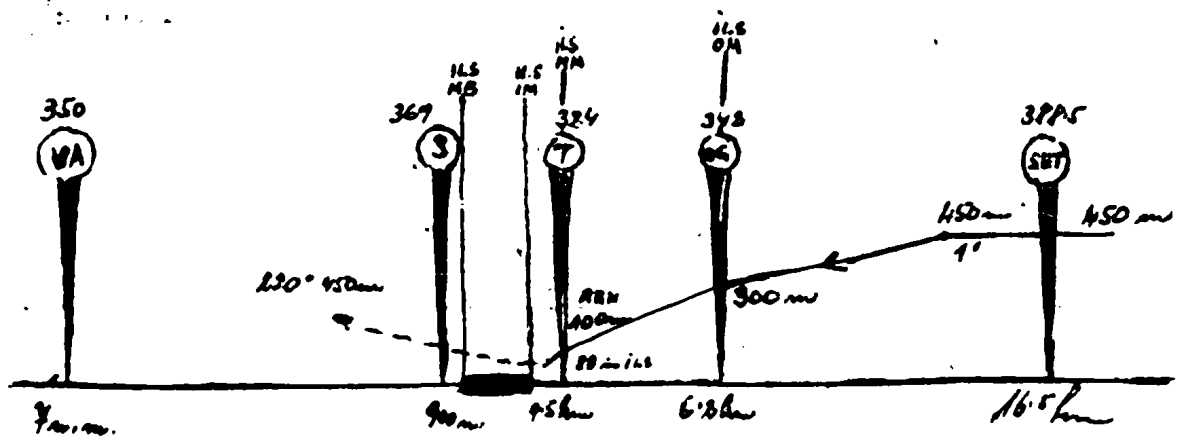
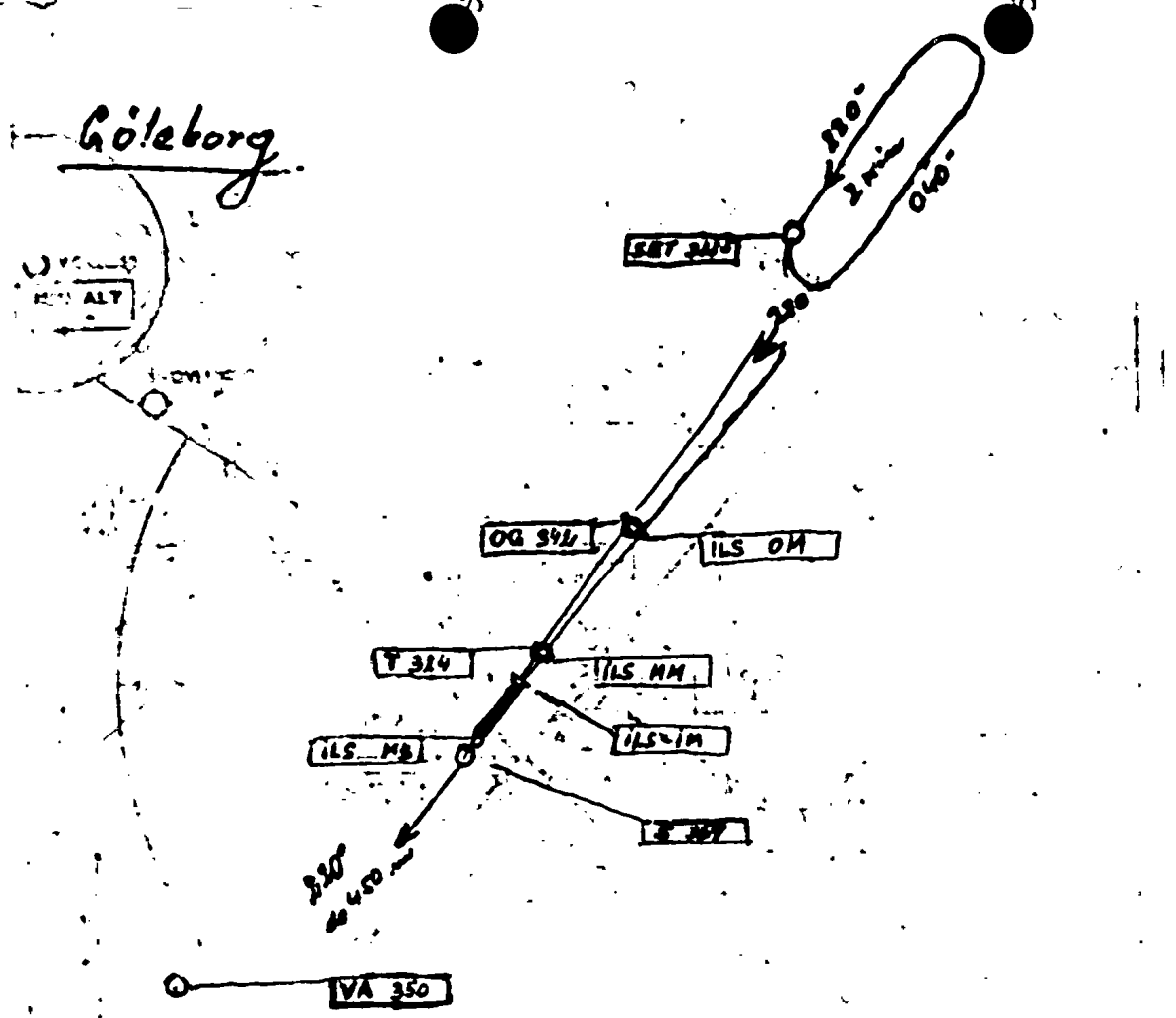
PROCEDURE TURN LEFT (450 m)

IF NO VISUAL CONTACT IN CLIMB STRAIGHT AHEAD (450 m) AND CONTACT AT FURTHER INSTRUCTIONS



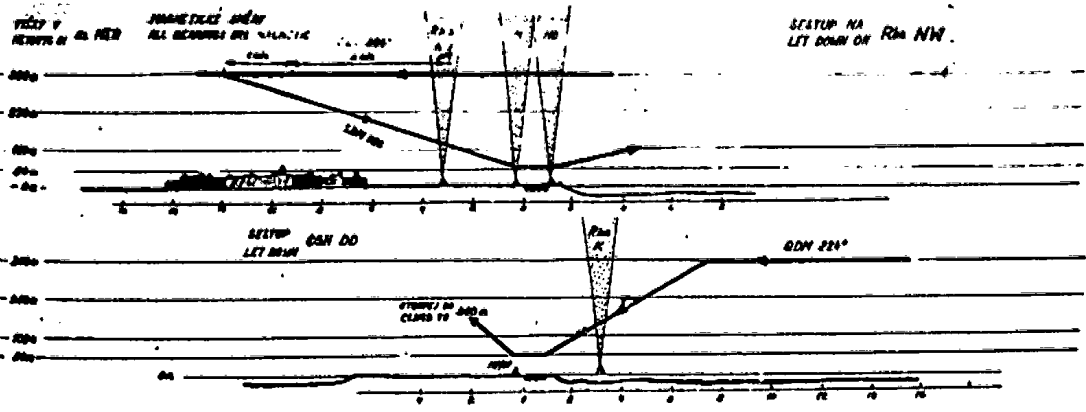
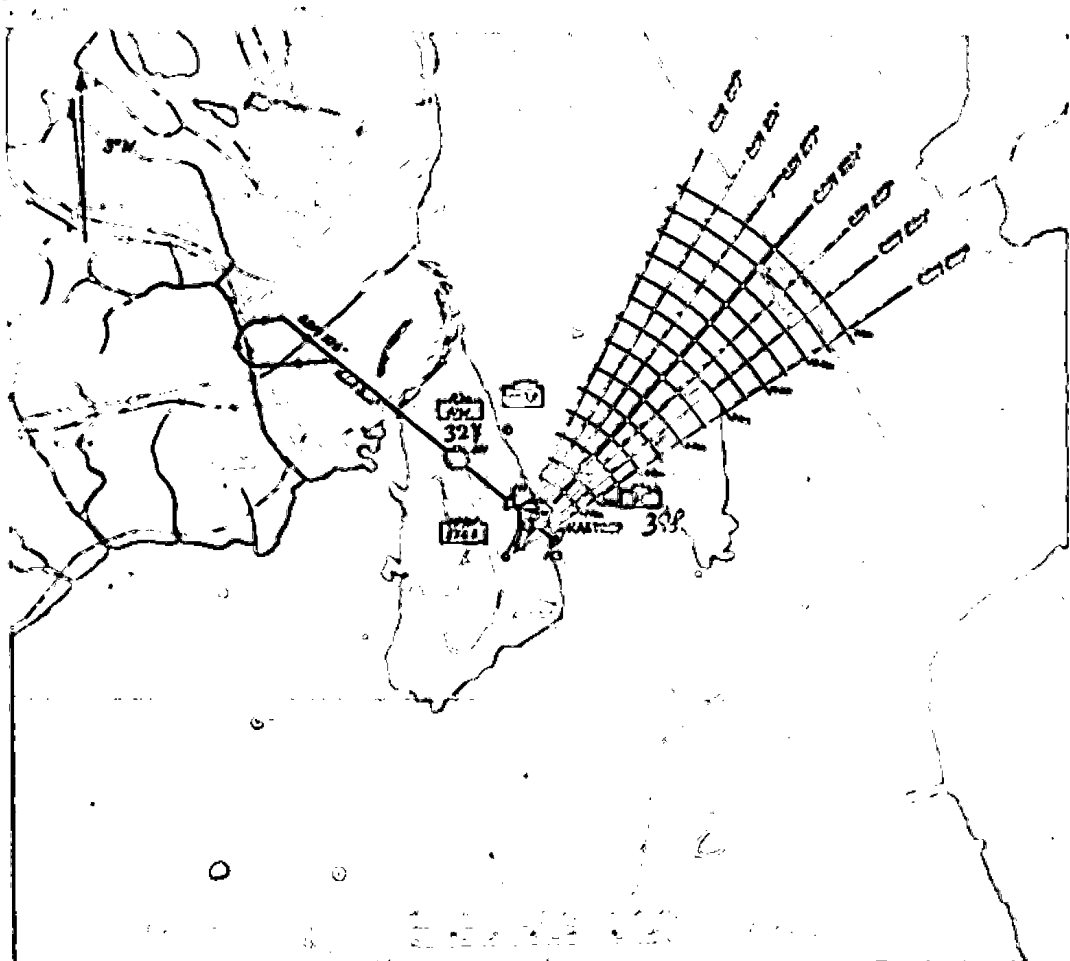
OFFICIAL 0/100m 50/800m

JULY 1952



153 2000m 1000m
12700m 1000m

55° 37' N 2m
12° 39' E 7m NEAR

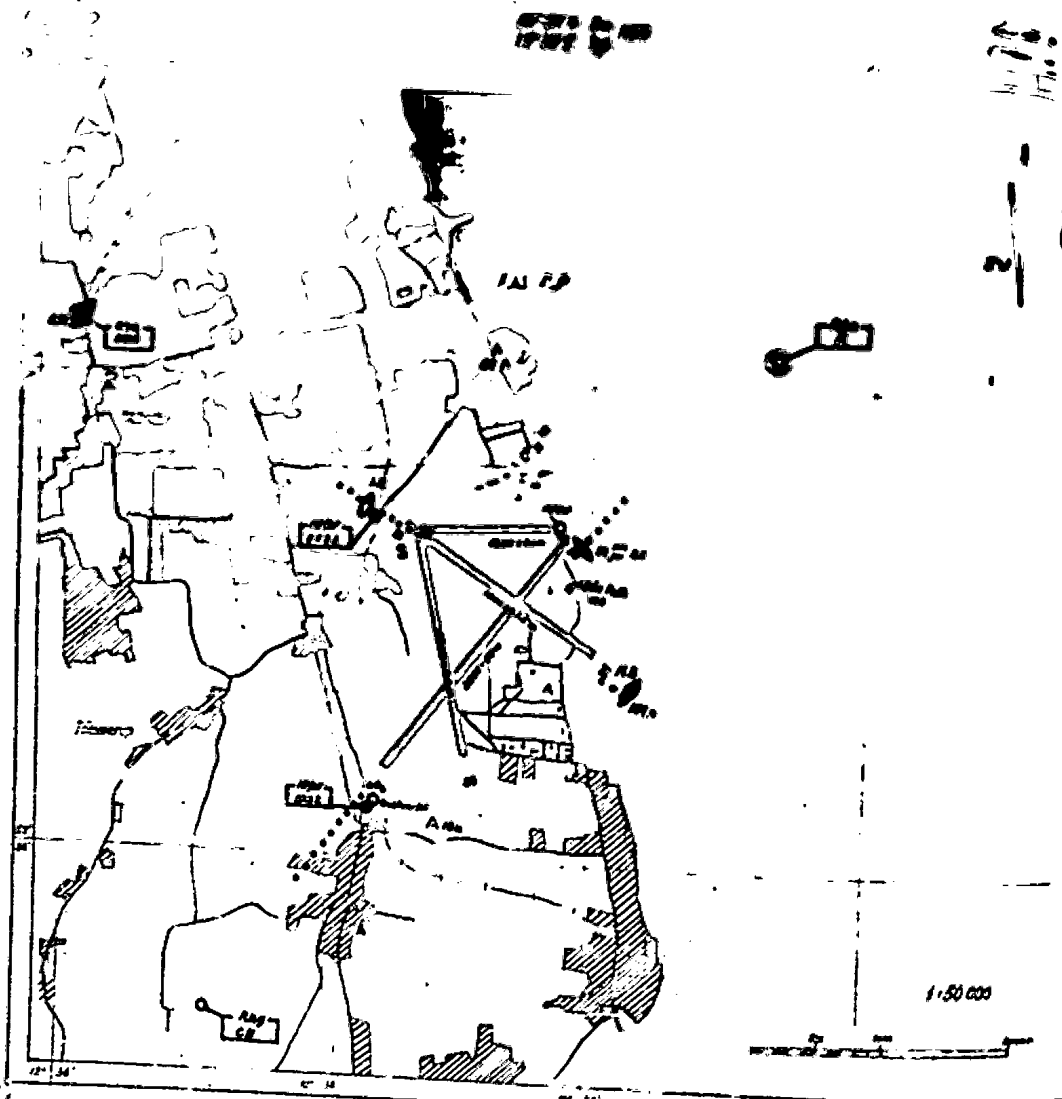


1. MATTHEW, ADICED
P. 80 THRESHOLD LIGHTS,
LIGHTS, LIGHT BENCH
Rho, Rho, BACSCCI

1950 R₂

610. 12. 60. R₂

27. x. 1950. R₂

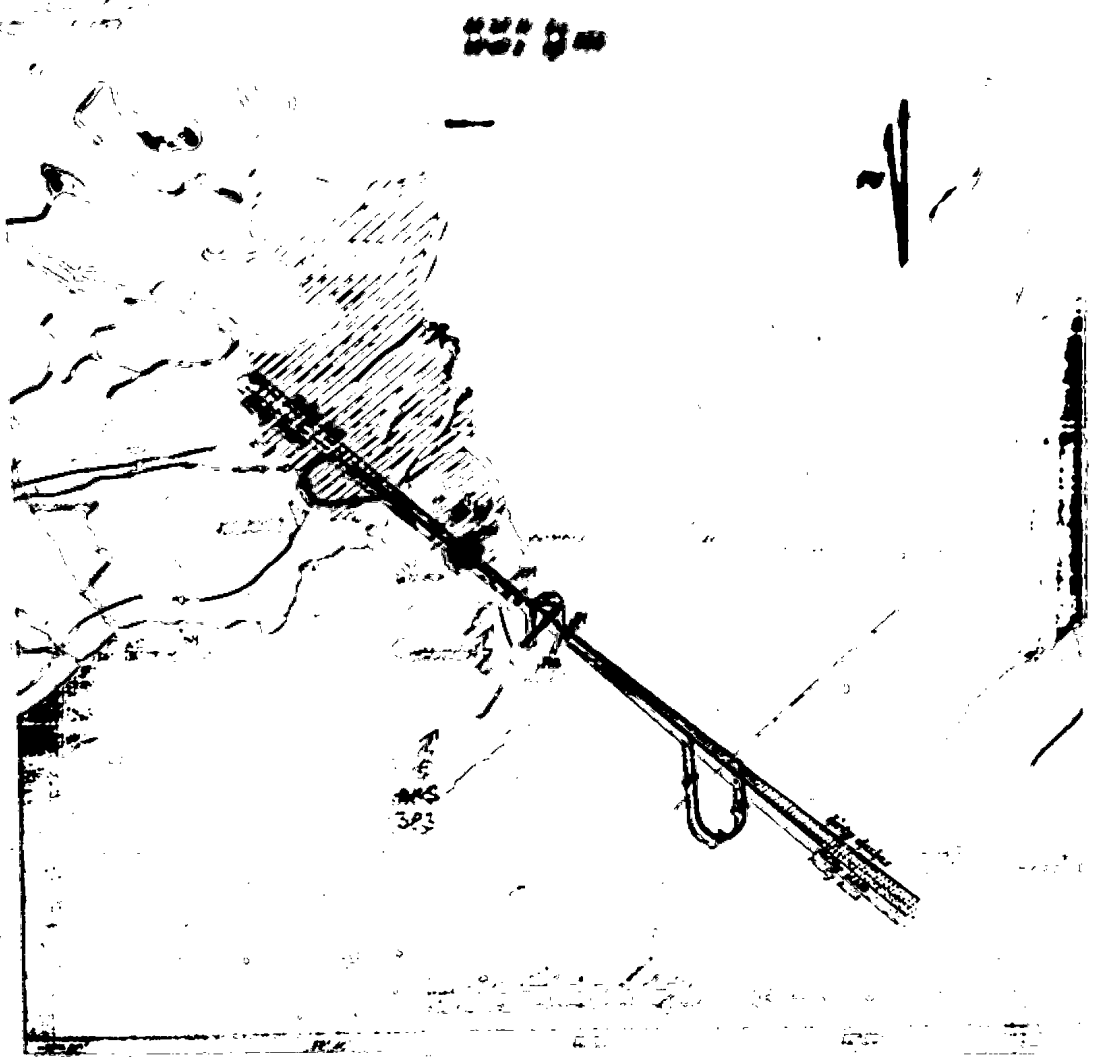


CELNÍ A PÁSŇOVÝ SLUŽEBNÍ, TRATOVÝ PŘÍMĚRN, POKROVĚ HNOTY, OBSLUHA LETADEL
 UBYTOVÁNÍ CESTOVNÍKŮ
 OSVĚTLENÍ: PŘÍBLÍŽNÁ NA R/V 01, 22, 23, 20, PŘÍMĚRNÁ SVĚTLA, DRÁHOVÉ
 SVĚTLA, ŽELEZNÁ PŘÍMĚRNÁ SVĚTLA NA POHĚB DRÁŽEK,
 SVĚTL. NAJIK
 RADIO: VNP RT, VNP RF, NP RT, NP RF, NP RT, NP RF, R/A, R/A, R/A, R/A, R/A, R/A, R/A, R/A
 POZNÁMKA: NA DRÁHOVÝ PŘÍMĚRNÍ AÍ ZA PÁSMŮ P/AS

CUSTOMS AND IMMIGRATION, WAITING, FUEL AND OIL, PASSENGER, PASSENGER,
 HANDLING,
 LIGHTING: APPROACH LIGHTS ON R/V 01, 22, 23, 20, THRESHOLD LIGHTS ON
 AND OBSTRUCTION LIGHTS, TAXIWAY LIGHTS, LIGHT BEACON
 RADIO: VNP RT, VNP RF, NP RT, NP RF, NP RT, NP RF, R/A, R/A, R/A, R/A, R/A, R/A, R/A, R/A
 NOTE: P/AS ON TRAIL 10000 MILES 1000

XYVA	221	250	270	290	310	330	350	370	390	410	430	450	470	490	510	530	550	570	590	610	630	650	670	690	710	730	750	770	790	810	830	850	870	890	910	930	950	970	990
DFW	221	250	270	290	310	330	350	370	390	410	430	450	470	490	510	530	550	570	590	610	630	650	670	690	710	730	750	770	790	810	830	850	870	890	910	930	950	970	990
DAY	221	250	270	290	310	330	350	370	390	410	430	450	470	490	510	530	550	570	590	610	630	650	670	690	710	730	750	770	790	810	830	850	870	890	910	930	950	970	990

1:50 000

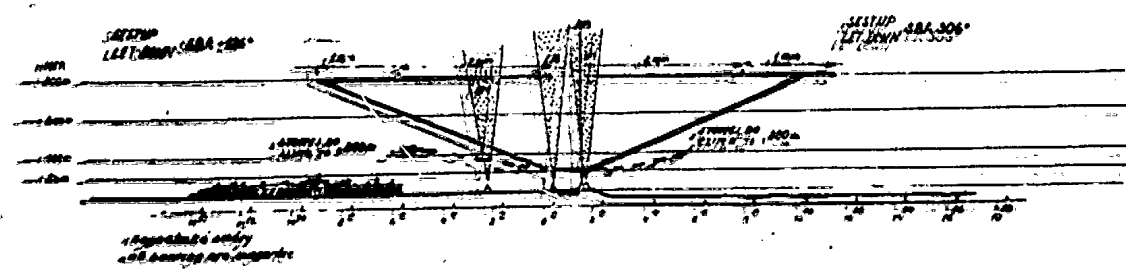


201 300

303

1:50 GDD

VIB. IN. PLATTINUM, PASCHE...
 PR. AD. AO TYPICAL LIGHTS...
 WAY LIGHTS, LIGHT BROWN...
 V. OF. Abn, Bag, BRADDOCK...
 MI



1964 1000 04

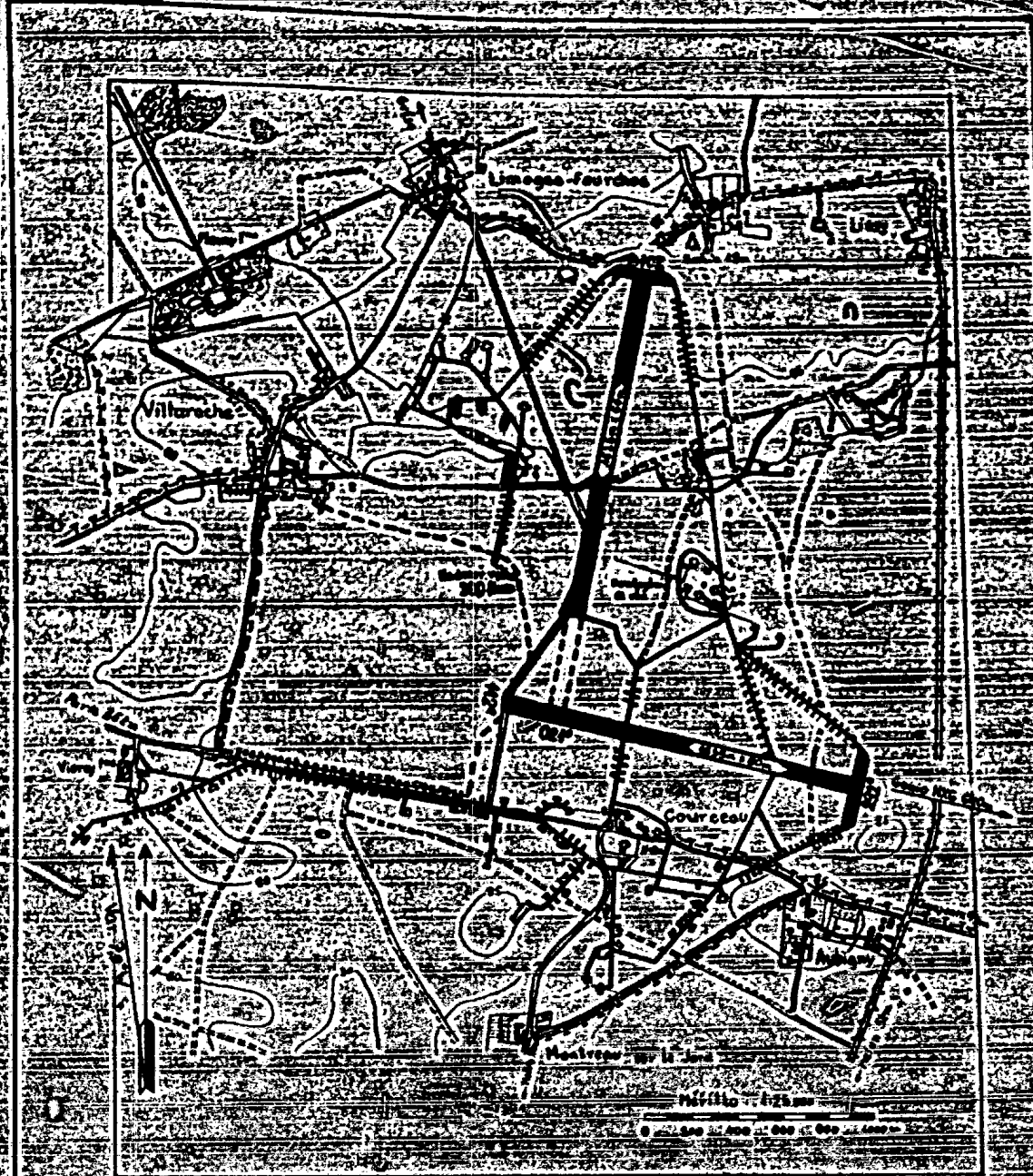
Handwritten signature or initials.

NY 40380-52

46° 37' N 3001142R
02° 40' E 01

FRANCIE

MELUN



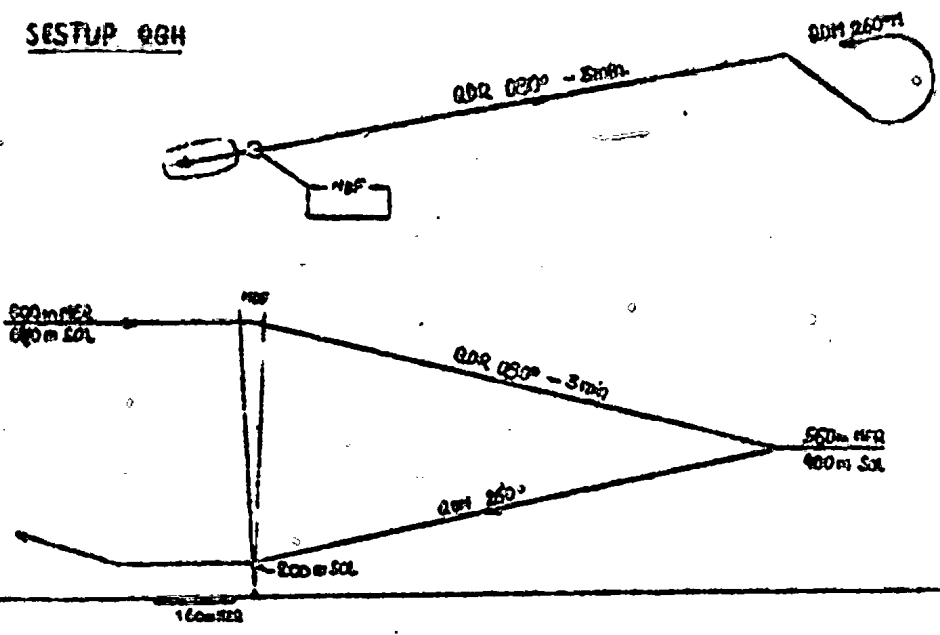
Letiště MELUN.	Přibližovací zóna:
Poloha: 8km na N od Melun	Rozumi se prostor mezi 0-2000m ohraničený na severu s jihu dráma vzt rovinnými, tangentními ke kontr. zóně
Start dráha: 1622x50m QFU 021/201	o poloměru 9km; sledující rovnooběžk
1635x50m QFU 109/289	osy QDM 289°. Na západ přibliž. zóna
Rollovací dráha: je betonová	je ohraničena okružem o poloměru 9km se středem na letišti. Na východě
Radiozařízení: vč, gonio navigační a přistávací	ohraničena je okružem 50km se středem na letišti. Bezpečnostní výška osy je 700m; na levé straně sestup osy QDM 289° je označena námlhy a toto označení prodlužuje se se 1 doz. dráhy E-W. Světelný maják V. Světelný přistávací T.

ČS AEROLINIE	ZABEZPEČOVACÍ	22. VIII. 1947	9						363
	ODD.								

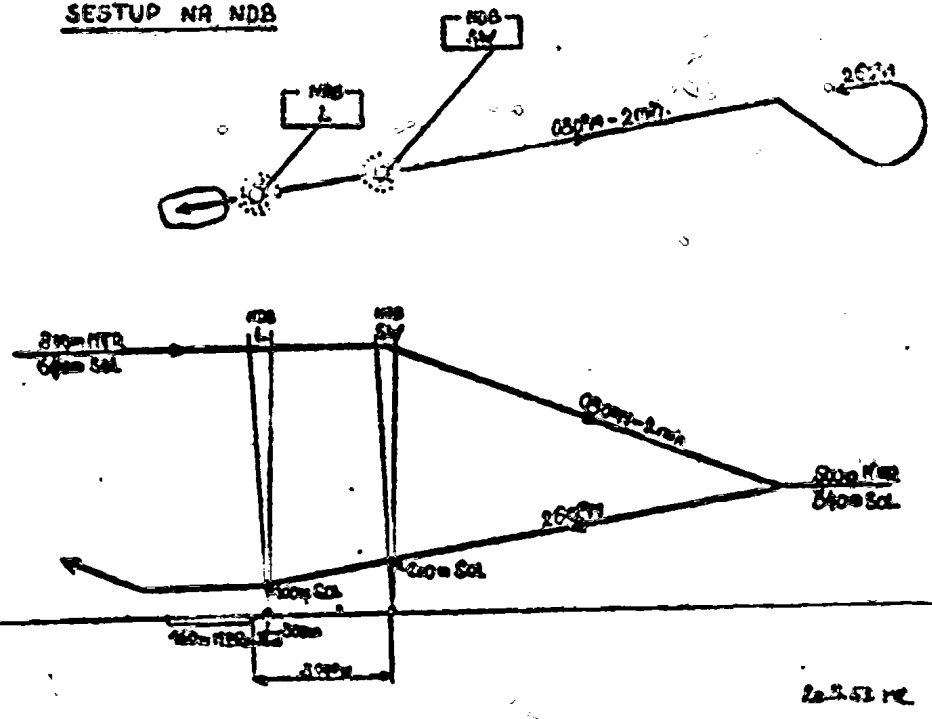
CSA
CAB
RBD
ROJ
31E
FOJ
L-8

PLOVDIV

SESTUP 0GH



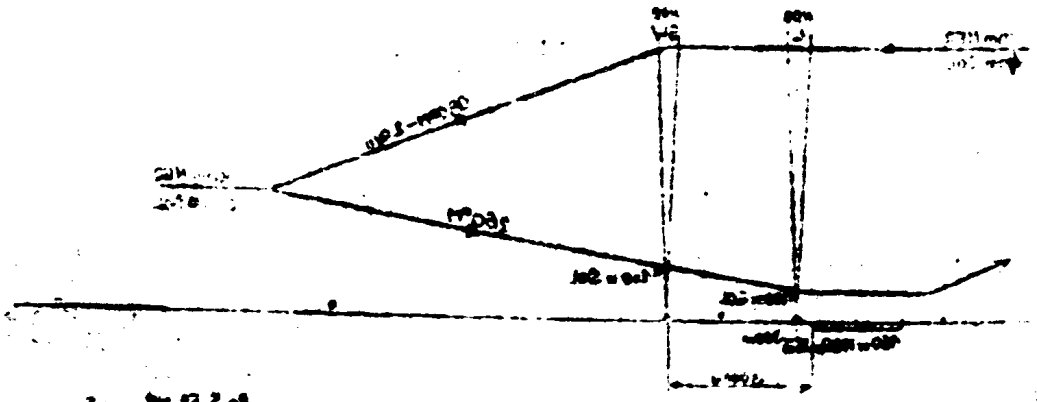
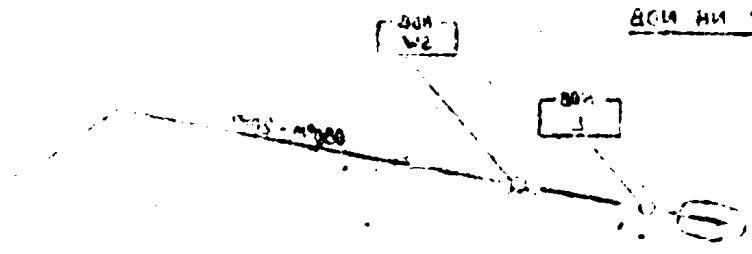
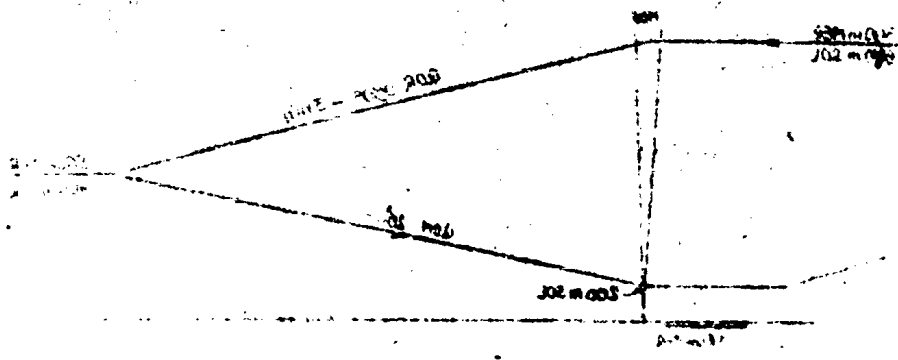
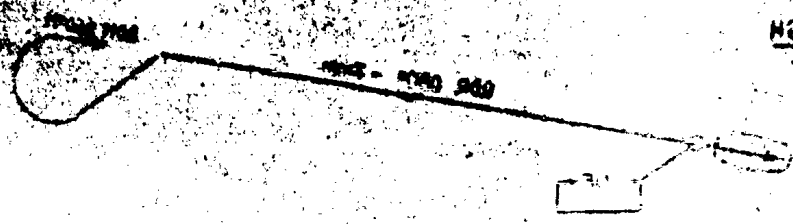
SESTUP NR NDB



20
87

BLVDY

WGD 9UT232

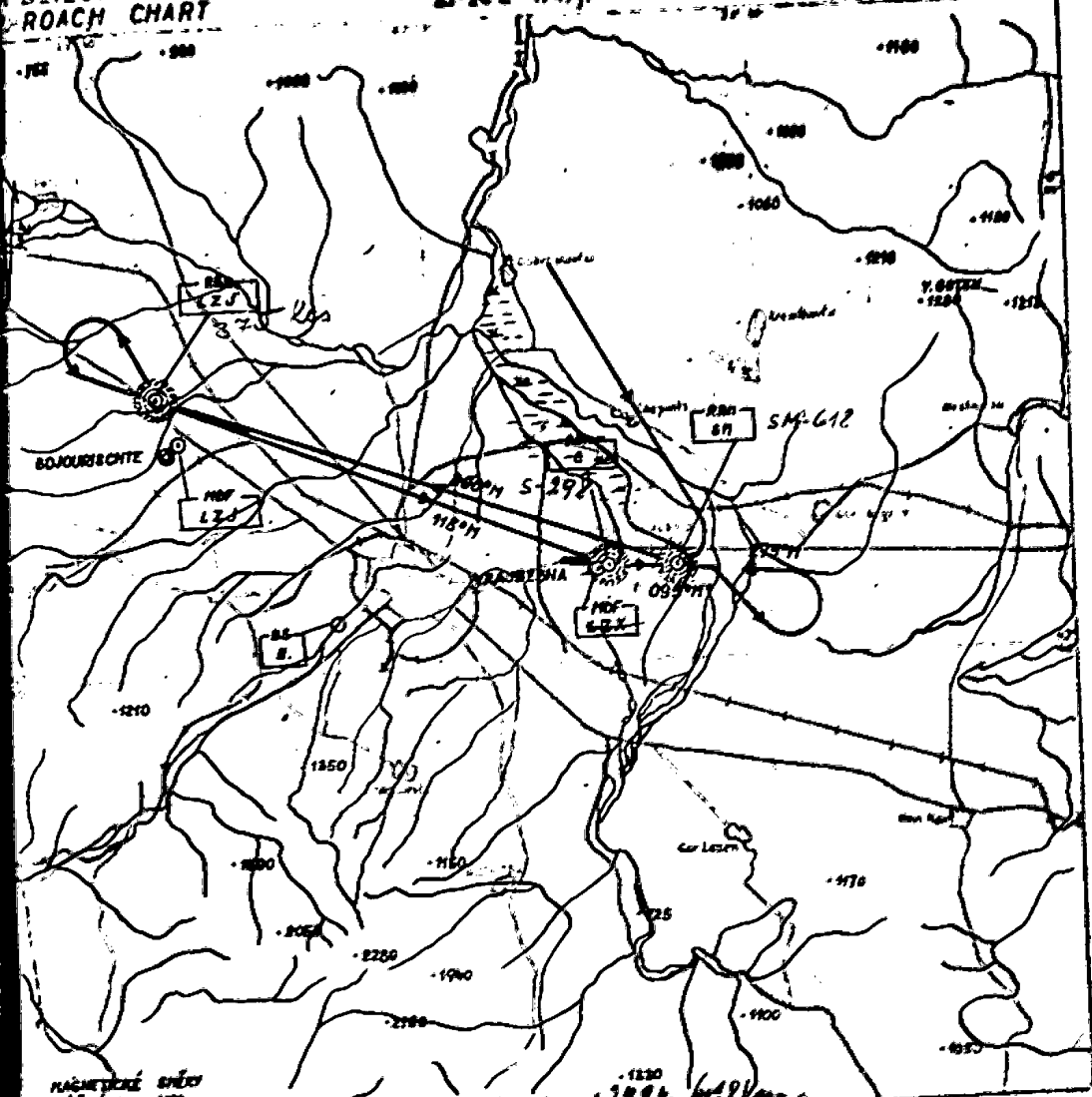


BLIŽOVACÍ MAPA
ROACH CHART

43° 48' N 23° 26' E
831 m MEB
1747 P

BULGARIA

SOFIA
VRAJDEBNA



NAČETNÉ SVĚTY
VÍŠK V m
325

1220
649 METER

2700 m MEB (2170 m SW)

200 FT

115 M

005 M

210 M

AND OIL, MAITENAK

V/W LIGHTS, OBSTRU

BROADCASTER

26. X. 1951 PČ

POMĚRY PRO TĚŽKÁH	
GBA	2000 m
GBE	180 m

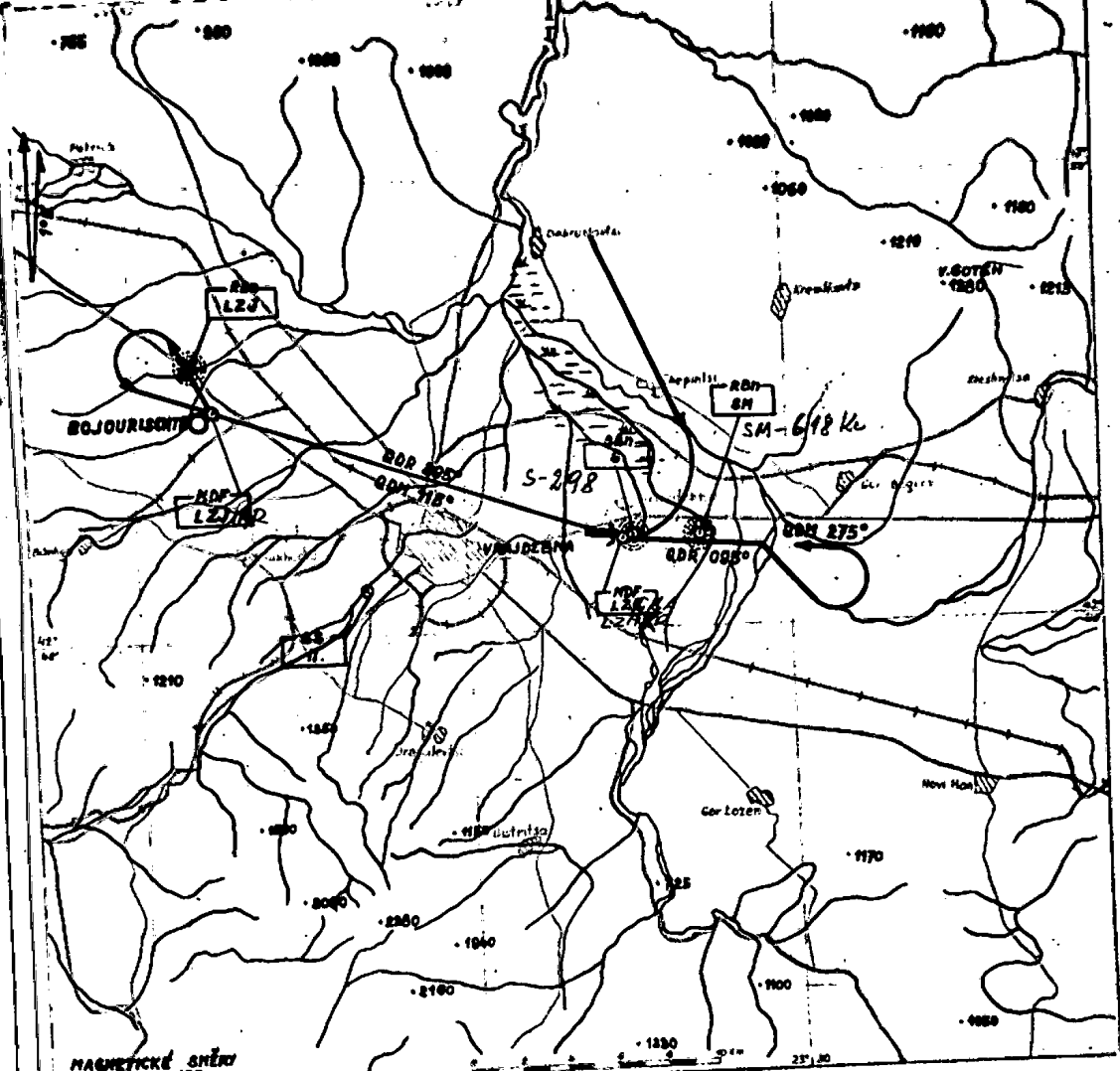
STÁVACÍ
LANDING CHART

PŘÍDLIŽOVACÍ MAPA
APPROACH CHART

42°42'N 53m MER
23°26'E (7677)

GULGARCA

SOFIA
VRAJDEBNA



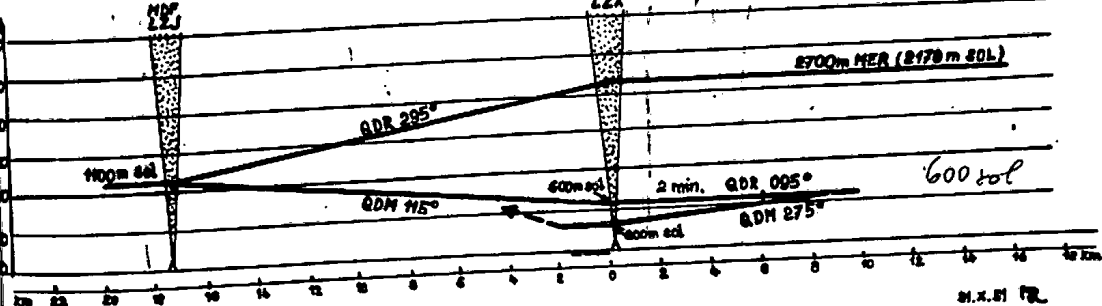
MAGNETICKÉ SMĚRY
VŠUDE V m MER 375K

MPE S-298, SM-618 Kc

ION, FUEL AND OIL
ACC.

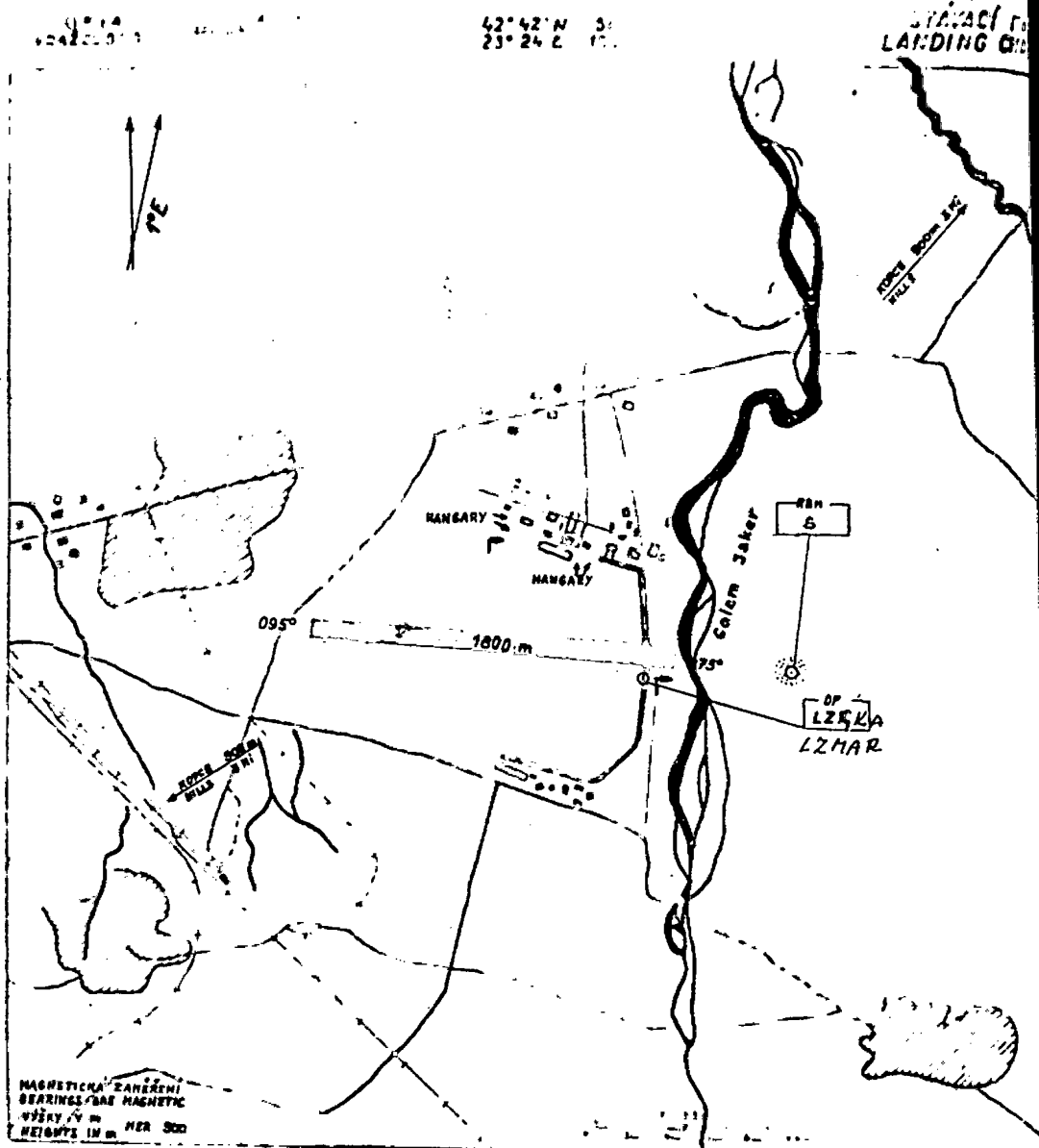
V LIGHTS

DF, RB, BROADCAST



POVĚTRNÁ PRŮMĚRNÁ	1000 m
QSA	2000 m
QBB	300 m

BUCU
SEST

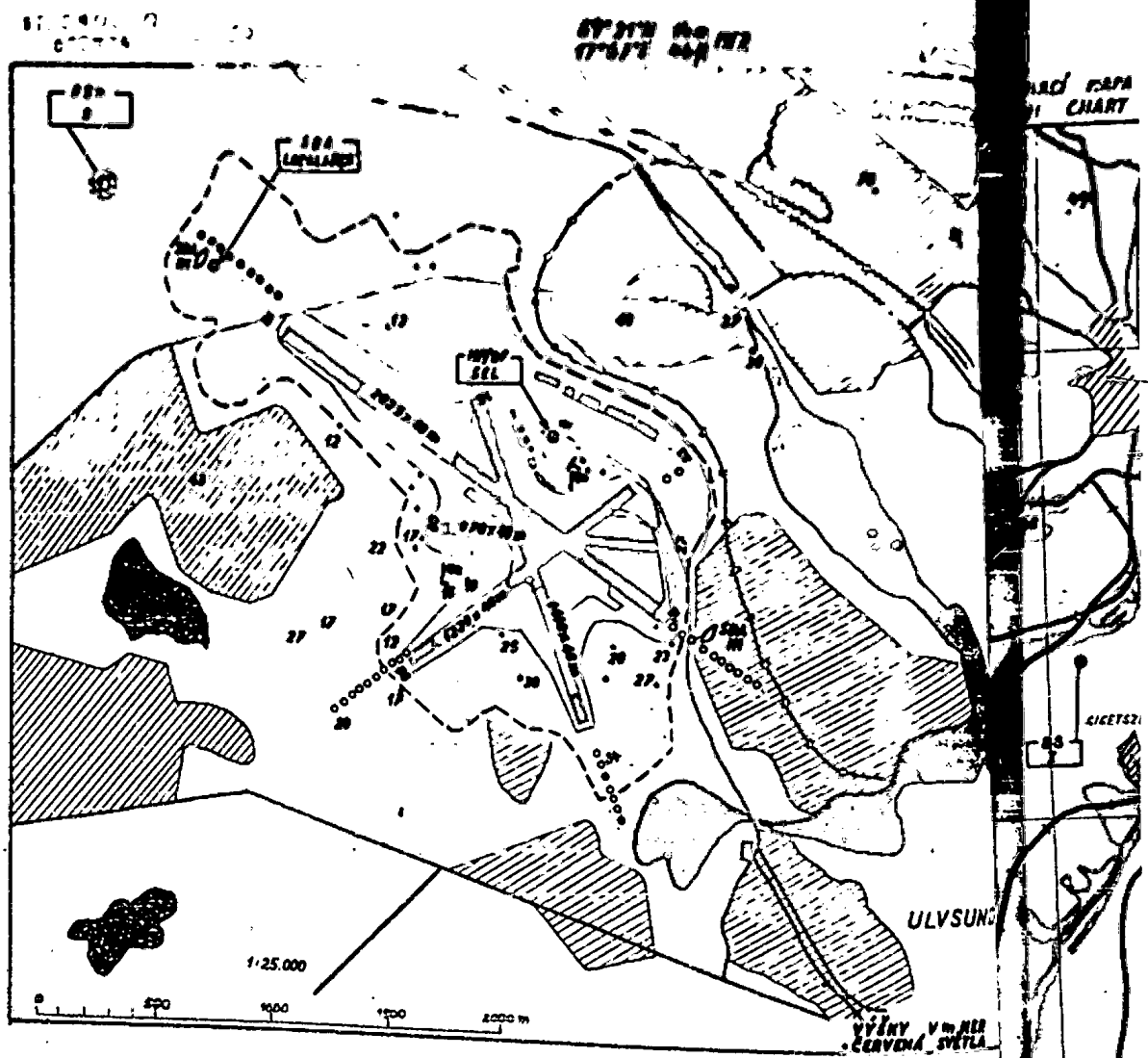


MAGNETICKÁ ZÁHRĚNÍ
BEARINGS FOR MAGNETIC
VÝŠKY 14 m
HEIGHTS IN m

CELNÍ A PASOJÁ SLUŽBA, POHONNÉ KMOJY, OBSLUHA LETADEL, UBYTOVÁNÍ CESTUJÍCÍCH	CUSTOMS AND IMMIGRATION, FUEL AND OIL MAINTENANCE, PASSENGER ACC
OSVĚTLENÍ, PŘEKÁŽKOVÁ SVĚTLA	LIGHTING, OBSTRUCTION LIGHTS
RADIO: HF RT, HF WT, MF DF, RBN, ROZHLAS. Číslo 0072	RADIO: HF RT, HF WT, MF DF, RBN, BROADCAST

300m

126



CELNÍ A PASOVÁ SLUŽBA, TRÁFOVÁ PŘÍPRAVA
 PONDONNÉ HMOTY, OBSLUHA LETADEL, UBYTO-
 VÁNÍ CESTUJÍCÍCH, HANGAROVÁNÍ

CUSTOM AND IMMIGRATION, BRIEFING, FUEL AND
 OIL, MAINTENANCE, PASSENGER ACC, HANGARAGE

OSVĚTLENÍ: SVĚTELNÝ MAJÁK, PŘEKÁŽKOVÁ SVĚTLA,
 PRAHOVÁ SVĚTLA NA R/V 05, 13, 16, 23, 31, 34
 DRÁHOVÁ SVĚTLA NA R/V 05, 13, 23, 31
 PŘIBLIŽOVACÍ SVĚTLA NA R/V 05, 13, 23, 31, 34
 SVĚTLA DLE POJIŽDĚCÍCH DRÁH

LIGHTING: IDENTIFICATION BEACON, OBSTRUCTION
 THRESHOLD LIGHTS ON R/V 05, 13, 16, 23, 31, 34
 RUNWAY LIGHTS ON R/V 05, 13, 23, 31
 APPROACH LIGHTS ON R/V 05, 13, 23, 31, 34
 TAXIWAY LIGHTS

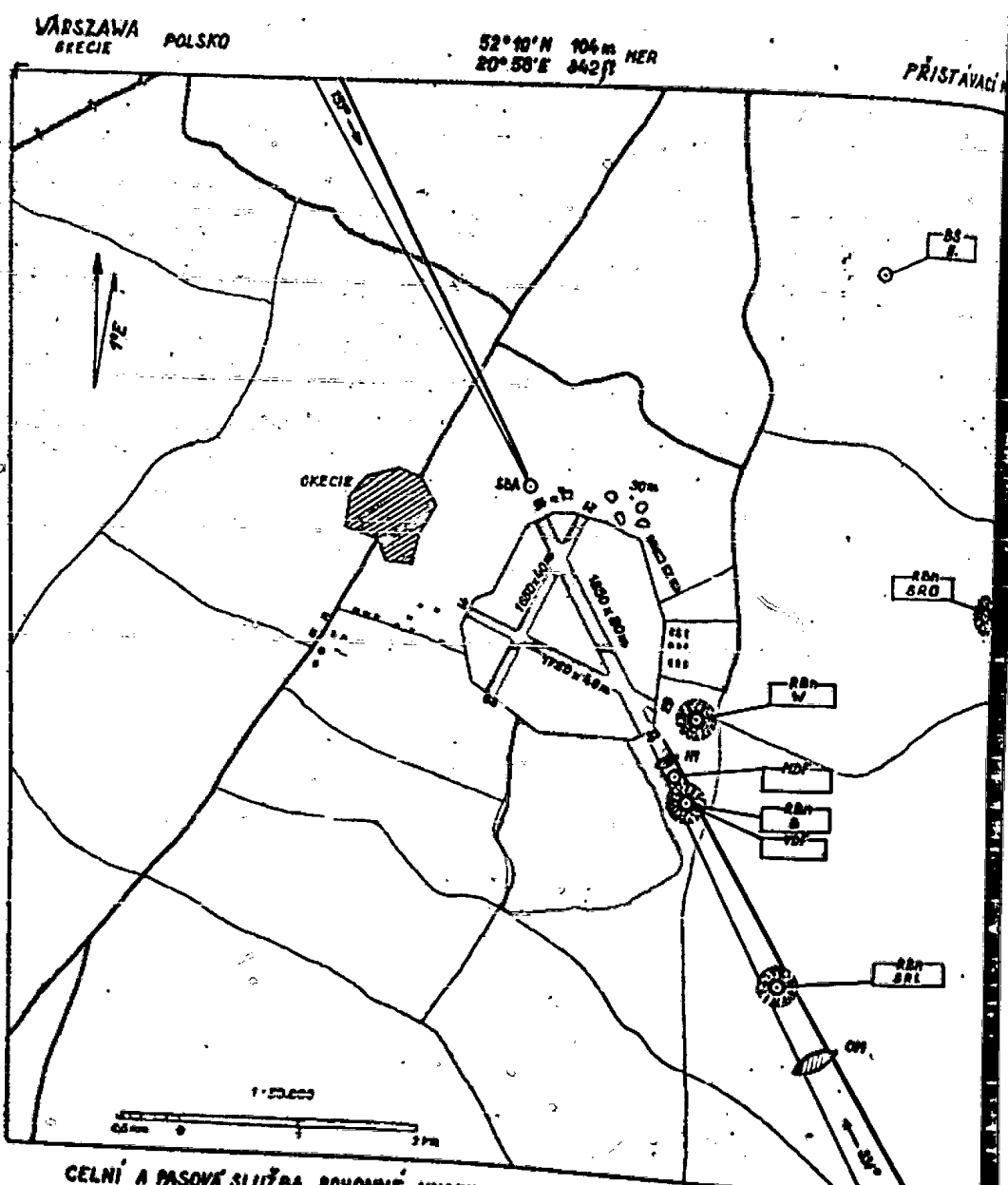
RADIO: VHF RT, HF RT, HF WT, HF DF, HF NT, HF DF
 RBN, RNG, SBA, ILS, ROZHLAS.

RADIO: VHF RT, HF RT, HF WT, HF DF, HF NT, HF DF.
 RBN, RNG, SBA, ILS, BROADCASTER.

ČSA. 10. IV. 51. PČ.

MAGNETICKÁ
 BEARINGS A1

PŘÍLIŽ
 TVRDIČ



CELNÍ A PASOVÁ SLUŽBA, PŮHONNÉ NMOTY, OBSLUHA LETADEL, UBYTOVÁNÍ CESTUJÍCÍCH.
 OSVĚTLENÍ: PŘEKÁŽKOVÁ SVĚTLA, PŘÍBLIŽOVACÍ SVĚTLA NA RW 33, DRÁHOVÁ A PRAHOVÁ SVĚTLA.
 RADIO: HF RT, HF WT, HF DF, VHF DF, RBN, SBA, RDZHLAS.

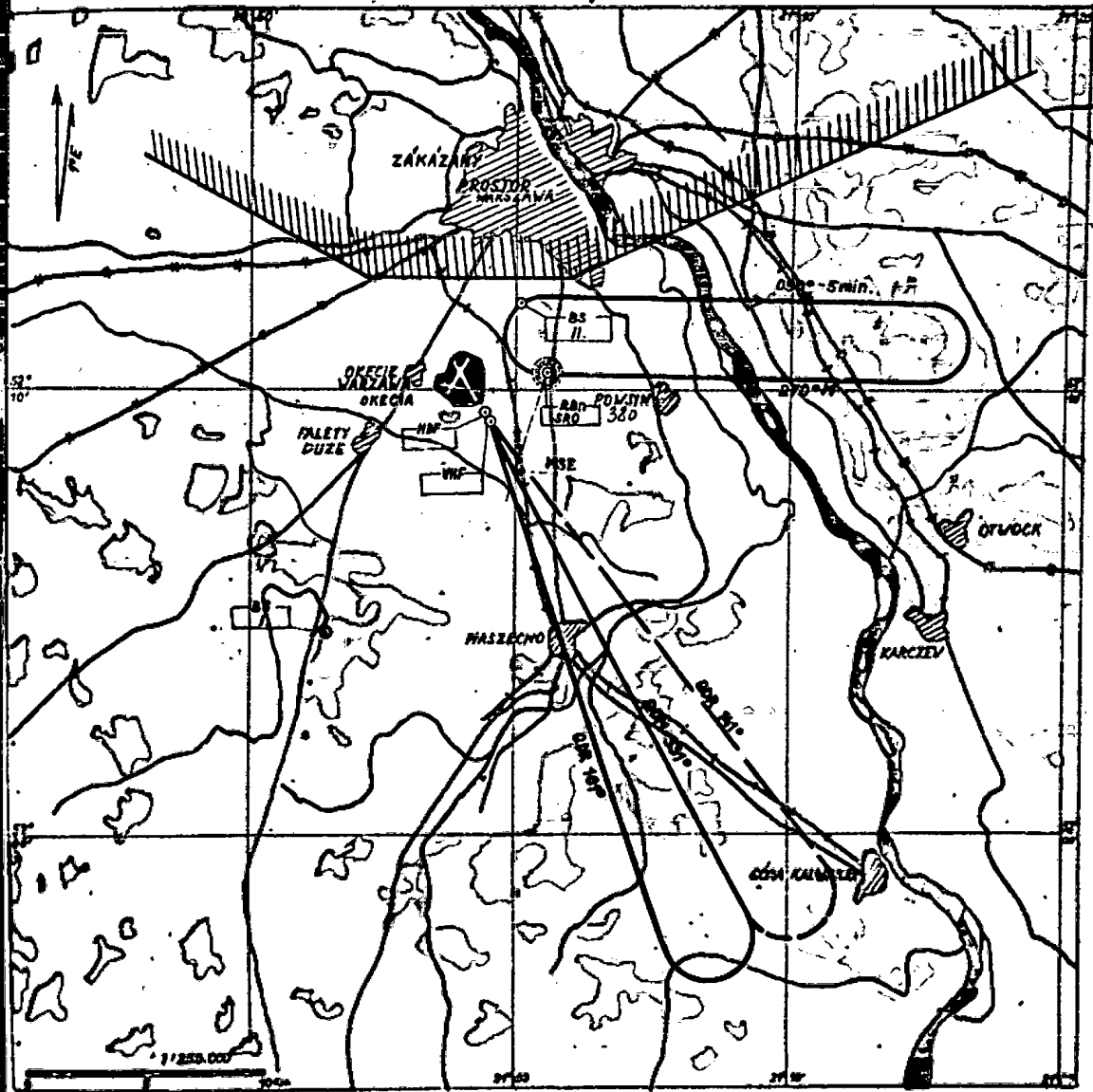
ČSA 41.X.57

PRÍSTAVKI

PŘIBLÍŽOVACÍ MAPA

52°10'N 104m MER
20°58'N 342R

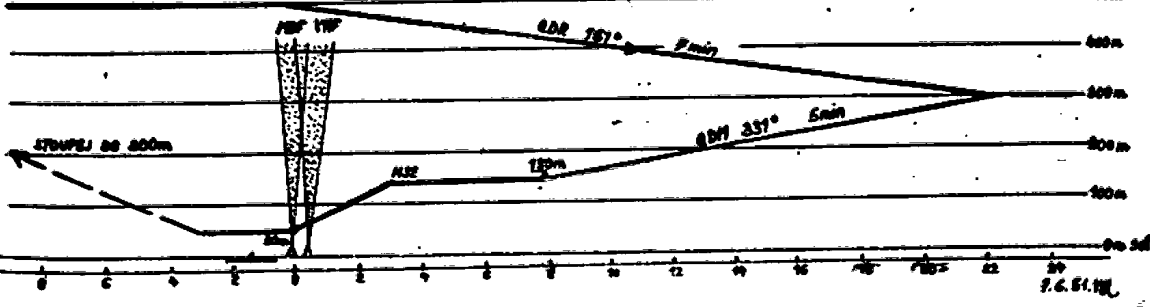
POLSKO WARSZAWA
GRECIE



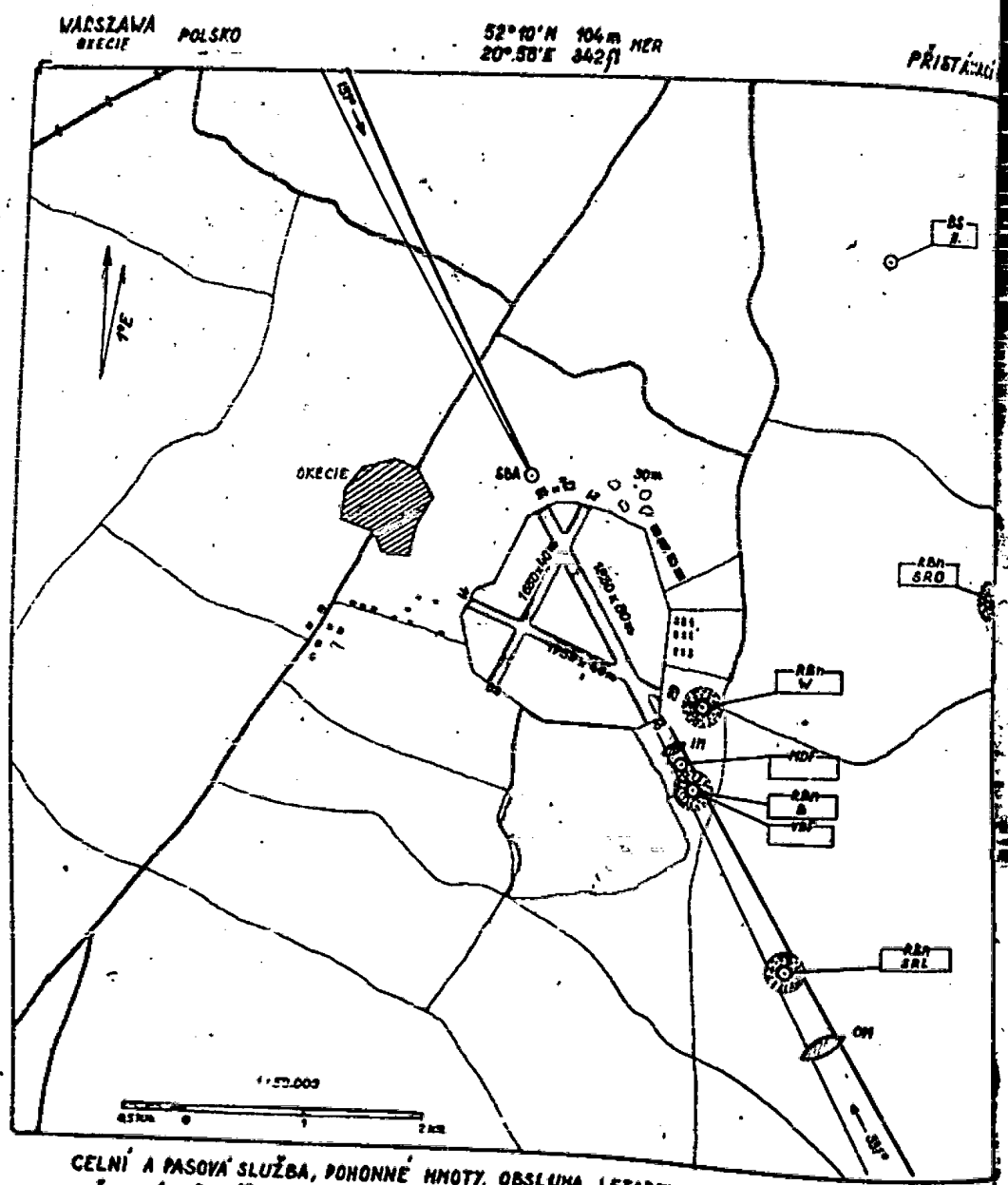
ČICH.
SVĚTLA.

SESTUP NA MDP

ASP 1 600m QFF



7.6.51.118



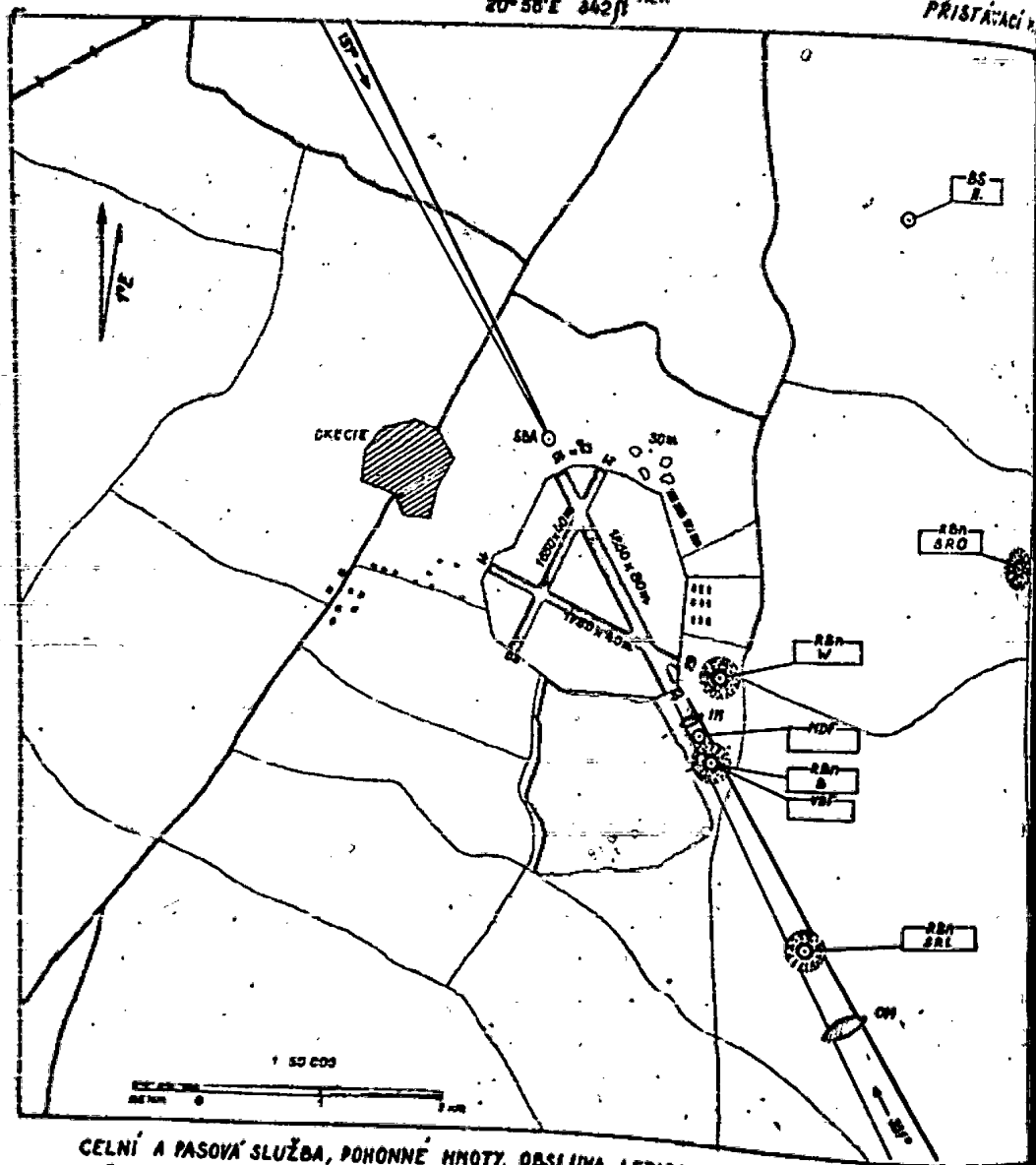
CELNÍ A PASOVÁ SLUŽBA, POHONNÉ HMOTY, OBSLUHA LETADEL, UBYTOVÁNÍ CESTUJÍCÍCH.
 OSVĚTLENÍ: PŘEKÁŽKOVÁ SVĚTLA, PŘIBLIŽOVACÍ SVĚTLA NA RW 53, DRÁHOVÁ A PRAHOVÁ SVĚTLA.
 RADIO: HF RT, HF WT, HF DF, VHF DF, RAN, SBA, ROZHLAS.

ČSA 11.X.51

WARSZAWA
GRECIE POLSKO

52° 10' N 104 m NER
20° 58' E 342 ft

PRÍSTÁVIŠŤ



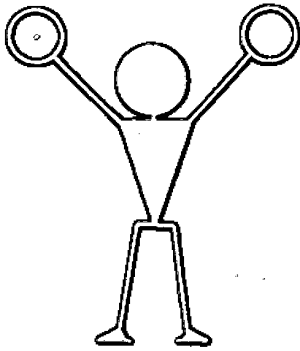
CELNÍ A PASOVÁ SLUŽBA, POHONNÉ HMOTY, OBSLUHA LETADEL, UBYTOVANÍ CESTUJÍCÍCH.
 OSVĚTLENÍ: PŘEKÁŽKOVÁ SVĚTLA, PŘIBLIŽOVACÍ SVĚTLA NA RWY 33, DRÁHOVÁ A PŘÁHOVÁ SVĚTLA.
 RADIO: HF RT, HF WT, HF DF, VHF DF, RBN, SBA, ROZHLAS.

CSA 11.11.18

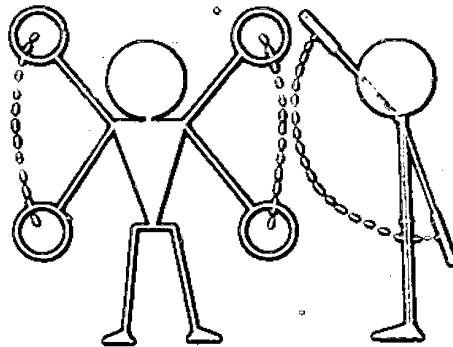
Day & night
airial parking
instructions

STANDARTNÍ SIGNALY PRO VEDLOU LETADEL

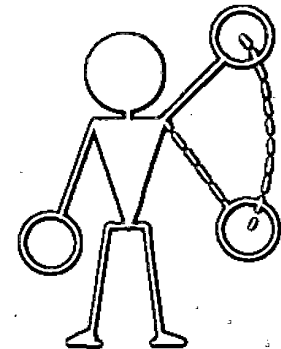
VE ONE



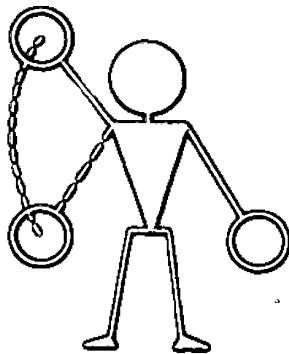
ZDE VYHRAŽENO MÍSTO



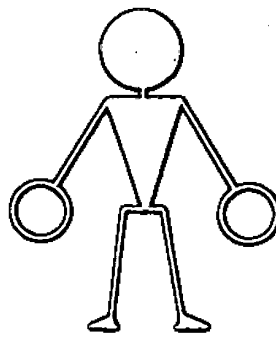
POJÍŽDĚT



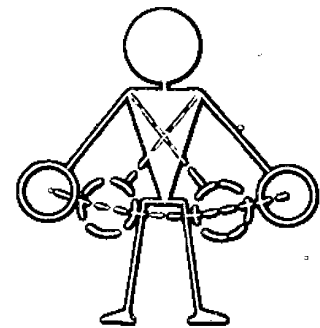
ZATÁČKA DOLEVA



ZATÁČKA DOPRAVA

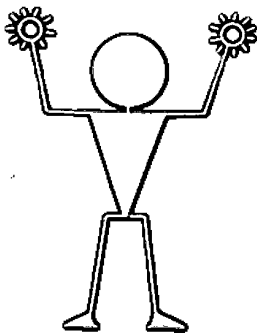


STÁT

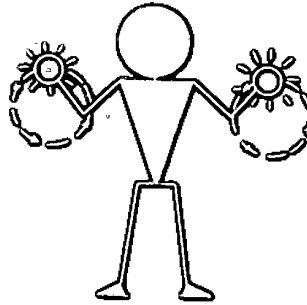


VYPNOUT MOTORY

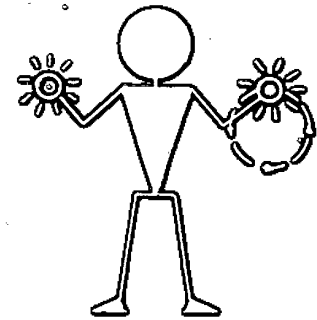
V NOCI



ZDE VYHRAŽENO MÍSTO



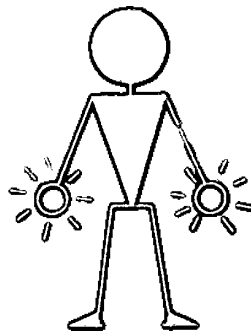
POJÍŽDĚT



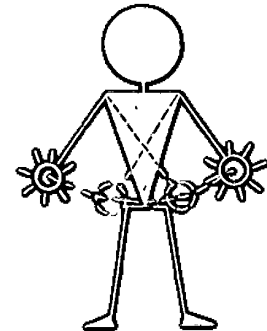
ZATÁČKA DOLEVA



ZATÁČKA DOPRAVA



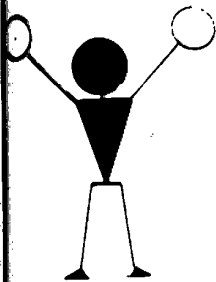
STÁT



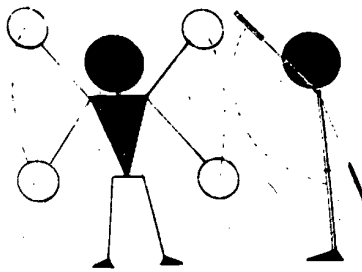
VYPNOUT MOTORY

STANDARTNÍ SIGNÁLY PRO VEDENÍ LETADEL

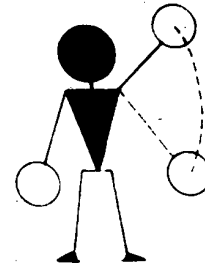
VE DNE



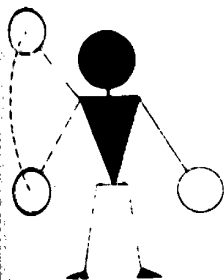
VYHRAŽENO MÍSTO



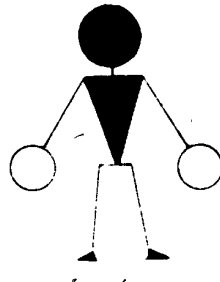
POJÍŽDĚT



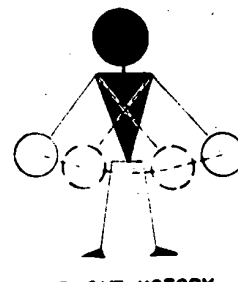
ZATÁČKA DOLEVA



ZATÁČKA DOPRAVA

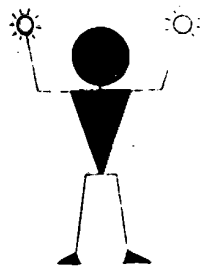


STAT

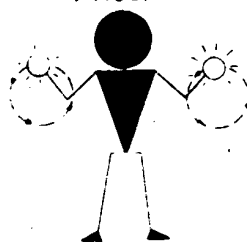


VYPNOUT MOTORY

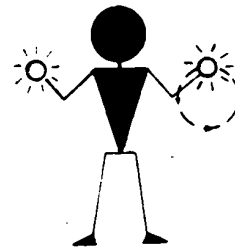
V NOCI



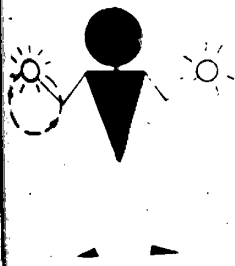
VYHRAŽENO MÍSTO



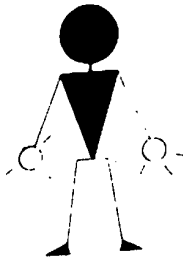
POJÍŽDĚT



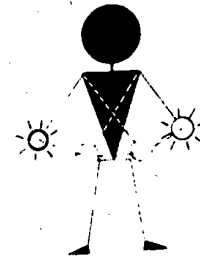
ZATÁČKA DOLEVA



ZATÁČKA DOPRAVA



STAT



VYPNOUT MOTORY

EROLINIE

ZABEZPEČOVACÍ SKUP. 18. II. 1948

595.

Tab. 595

FOIA b7D

Declassified in Part - Sanitized Copy Approved for Release 2012/05/02 :

CIA-RDP80S01540R003700010002-4

Page Denied

Next 260 Page(s) In Document Denied

Declassified in Part - Sanitized Copy Approved for Release 2012/05/02 :

CIA-RDP80S01540R003700010002-4