

CONFIDENTIAL

CENTRAL INTELLIGENCE AGENCY  
**INFORMATION REPORT**

50X1-HUM

COUNTRY **Poland**

REPORT

SUBJECT **United Polish Workers Party/Organization and Administration/Membership**



DATE DISTR. **14 Jun 1954**

NO. OF PAGES **10** 50X1-HUM

NO. OF ENCLS.

SUPP. TO REPORT NO. **50X1-HUM**

THIS DOCUMENT CONTAINS INFORMATION AFFECTING THE NATIONAL DEFENSE OF THE UNITED STATES, WITHIN THE MEANING OF TITLE 18, SECTIONS 793 AND 794, OF THE U.S. CODE, AS AMENDED. ITS TRANSMISSION OR REVELATION OF ITS CONTENTS TO OR RECEIPT BY AN UNAUTHORIZED PERSON IS PROHIBITED BY LAW. THE REPRODUCTION OF THIS REPORT IS PROHIBITED.

THIS IS **UNEVALUATED** INFORMATION



Structure of the PZPR

1. "The following chart shows the organization of the PZPR-Polska Zjednoczona Partia Robotnicza (United Polish Workers Party):

[see following page for chart]



50X1-HUM

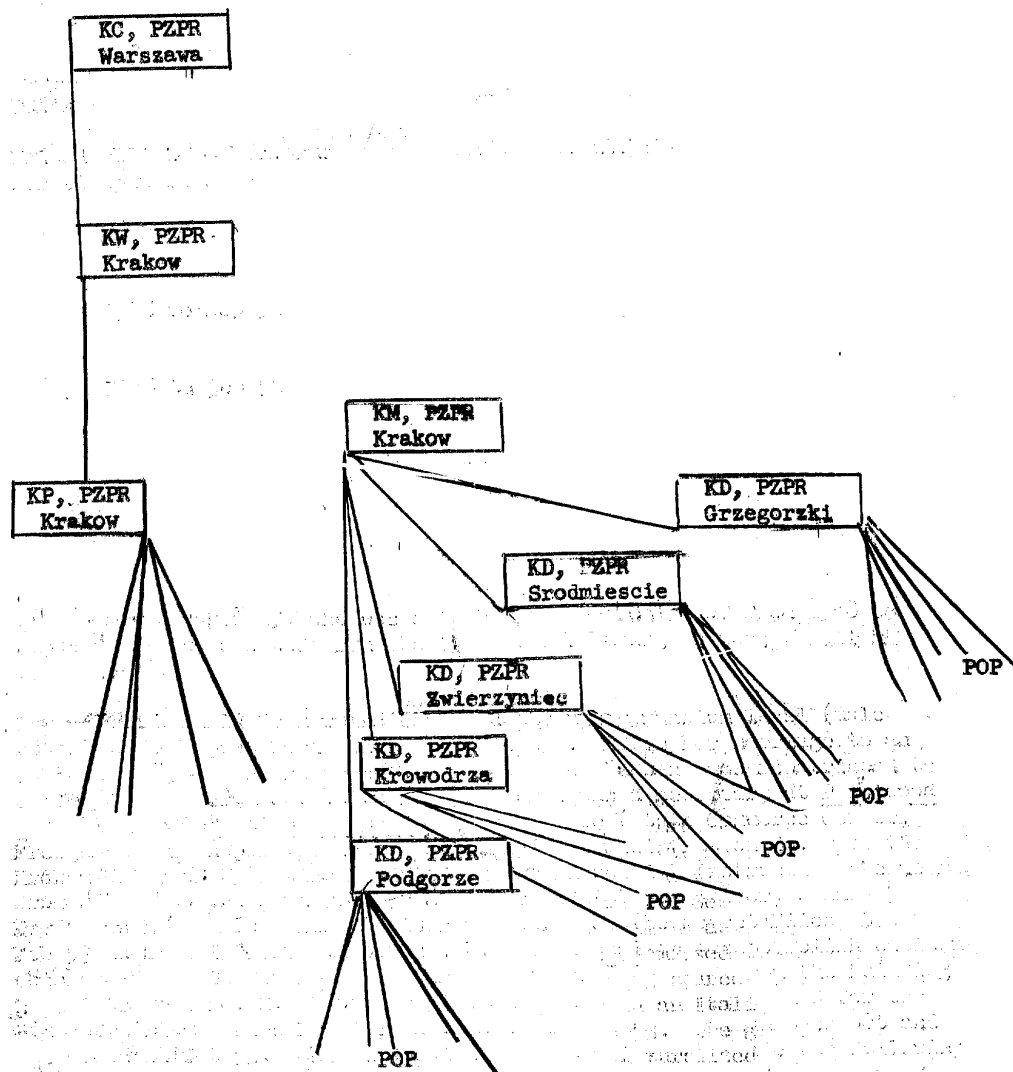
U. S. Officials Only  
CONFIDENTIAL

140

DISTRIBUTION	STATE EV	ARMY	NAVY	AIR	FBI						
--------------	----------	------	------	-----	-----	--	--	--	--	--	--

This report is for the use within the USA of the Intelligence components of the Departments or Agencies indicated above. It is not to be transmitted overseas without the concurrence of the originating office through the Assistant Director of the Office of Collection and Dissemination, CIA.

- 2 -  
 CONFIDENTIAL  
 US OFFICIALS ONLY



Legend

- PZPR** Polska Zjednoczona Partia Robotnicza (United Polish Workers Party)
- KC** Komitet Centralny (Central Committee)
- KW** Komitet Wojewodzki (Voivod Committee)
- KP** Komitet Powiatowy (District Committee)
- KM** Komitet Miejski (Municipal Committee)
- KD** Komitet Dzielnicowy (Division Committee) (Sic)
- POP** Podstawowa Organizacja Partyjna (Basic party organization)
- I-Sekr** I-szy Sekretarz (First Secretary)

CONFIDENTIAL  
 US OFFICIALS ONLY

CONFIDENTIAL  
US OFFICIALS ONLY

Administration

2. "The Chairman of the State Council is at the same time president of the Central Committee (Komitet Centralny) of the PZPR. The headquarters of the Central Committee is located in Warsaw. The Voivod Committee (Komitet Wojewodzki) is directly subordinate to the Central Committee. There is a Voivod Committee office in every town of the Voivody. In Krakow the Voivod Committee office is located on the corner of St. Thomas Street (Ul SW Tomasza) and 'Planty' which is parallel to Stalin Street before coming to Potocki Street (Ul. Potockiego). I know two people in the Voivod Committee in Krakow. They are (fnu) Ha.jewski and (Fnu) Szlachta.
3. "All of the District Committees (Komitet Powiatowy) and Municipal Committees (Komitet Miejski) of a voivody are subordinate to the Voivod Committee. The Krakow District Committee is located on 'Aleje Krasinskiego'. All of the committees within a certain district (such as Krakow) are subordinate to the District Committee. The Division Committees (Komitet Dzielnicowy) are subordinate to the Municipal Committee. The Municipal Committee office in Krakow is located on the central square at the corner of Wislna Street.
4. "The following Division Committees are located in Krakow:
  - (a) Srodmiescie Division Committee
  - (b) Grzegorzaki Division Committee
  - (c) Zwierzyniec Division Committee
  - (d) Podgorze Division Committee
  - (e) Krowdrza Division Committee

The office of the Srodmiescie Division Committee is located on the central square of Krakow in the same building where the Municipal Committee is located. The Zwierzyniec Division Committee office is located on the Krasinskiego Allee. The Podgorze Division Committee office is located on the square of the Podgorze division (town section).

5. "All POPs (basic party organizations) in a given section are subordinate to the Division Committee of that section. The POP is the lowest cell of the PZPR. POPs may be found in all factories, enterprises, plants, etc. There are also POPs outside of factories, and I believe that they belong to the Committee of the Division (town section). I have prepared the following charts to show organizational setup of the POP and the KD (Komitet Dzielnicowy):

POP - PDOSTAWOWA ORGANIZACJA PARTYJNA (Basic organization of the party - the lowest cell of the party)

	Egzekutywa POP
I-wszy Sekretarz POP	Executive staff of POP
1st secretary of the POP	(? members)

II-Sekretarz POP  
(2nd secretary of the POP)

III Sekretarz POP  
(3rd Secretary of the POP)

Czlonkowie POP

The members of the POP

CONFIDENTIAL  
US OFFICIALS ONLY

CONFIDENTIAL  
US OFFICIALS ONLY

50X1-HUM

KD - KOMITET DZIELNICOWY PZPR (Committee of the town section PZPR)

Egzekutywa KD  
Executive board of the KD  
I-wszy Sekretarz KD (1st secretary of the KD) (? members of executive board)

II-Sekretarz KD  
(2nd secretary of the KD)

III-Sekretarz KD  
(3rd secretary of the KD)

Office of the KDPZPR  
? number of employees

POP

POP

WYDZIAŁ PROPAGANDY  
(propaganda section)

WYDZIAŁ KULTURALNO-OSWIATOWY  
(Section of cultural affairs and instruction)

WYDZIAŁ SZKOLENIOWY  
(Training section)

WYDZIAŁ KOBIECY  
(women's section)

and so forth

Administration of the POP

6. In all the Party committees the head of the committee is called the First Secretary. There are also one or several Second Secretaries and an executive staff (the size of the latter depending on the size of the committee). The POP likewise had its First Secretary, Second Secretary and Third Secretary and a POP executive staff.

Application for Party Membership

7. Anyone wishing to join the Party must obtain an application blank from the First Secretary of the POP and after filling it out, it must be returned to him. The application is then examined by the other members of the POP, and if one of them finds any reason for refusing admittance, it will be refused and the applicant is notified accordingly. It is much easier to obtain Party membership if one has had prior membership in the ZMP (Związek Młodzieży Polskiej-Union of the Polish Youth). It is better still if the applicant is from a proletarian background. The application must be signed by two members of the party who will introduce the new candidate. The application form is typed on a sheet of white paper (size 28 x 21 cm?). The remarks on the form are to be filled out by the First Secretary and the offices of the Division Committee. The following is an example of an application blank as I remember it:

[see following page]

CONFIDENTIAL  
US OFFICIALS ONLY

**CONFIDENTIAL  
US OFFICIALS ONLY**



50X1-HUM

**D E K L A R A C J A**

Nazwisko i imię . . . . . imię ojca . . . . .  
 Data urodzenia . . . . . miejsce urodz . . . . .  
 Miejsce zamieszkania . . . . .  
 Zawód wykonywany . . . . . zawód wyuczony . . . . .  
 Zajmowane stanowisko . . . . .

**Przynależność partyjna:**

Do 1939r.	Wokresie okupacji	Po wyzwolenia
-----------	-------------------	---------------

Uwaga: podać stanowiska zajmowane w partii. . . . . (podpis kandydata)

Członkowie wprowadzający: (nazwisko imię i adres 2-ch członków partii).

UWAGI: (wypełniają czynniki polityczne)

Translation

**A P P L I C A T I O N**

Name and first name . . . . . first name of father. . . . .  
 Date of birth . . . . . Place of birth . . . . .  
 Residence . . . . .  
 Profession engaged in . . . . . Profession learned . . . . .  
 Post held (position) . . . . .

Party membership:

Until 1939	during the occupation	after the liberation
------------	-----------------------	----------------------

Note: give the positions occupied in the party

(signature)

The party members, the sponsors of the candidate (name, first name and address of two party members) . . . . .

Remarks: (to be filled out by political authorities) . . . . .

**CONFIDENTIAL  
US OFFICIALS ONLY**

CONFIDENTIAL  
US OFFICIALS ONLY

Provisional Membership Card

8. "If the application is approved the candidate for Party membership receives a provisional membership card which is entitled 'Provisional Membership Card' (Legitimation Provisoire). The provisional membership card looks exactly like the regular (stabile) membership card in size and shape except that the numbering is different. The numbering on the provisional membership card begins with the number '0' while that on the regular membership card begins with the letter '1'. Some time later the POP calls another meeting and the candidate becomes a regular member.

Regular Membership Card

9. "Regular party membership cards are obtained at the office of the Division Committee. It looks just like the Syndicate membership card only the cover is a different color. The cover of the party membership card is dark red and the letters PZPR are printed on it. The party membership card is not an identity card and must not be shown even in case of arrest to the authorities of the Milicja Obywatelska. The membership card may only be shown to Party members. The text on the cards is made up by Party authorities exclusively. The signatures are those of the First or Second Secretary of the Division Committee. There is a place for a photograph and below this the owner of the card signs his own name. On the following pages, there is space for stamps to be pasted upon payment of membership dues. The changes of address of the member are noted on the page headed 'change of POP'. One page is reserved for special remarks concerning jobs in the Party held by the cardholder and any penalties imposed by the Party. The following data is required on a membership card:

Legitymacja Czlonkowska (membership card)

- a. Podpis--signature
- b. Nazwisko i imie--family name and first name
- c. Data i miejsce urodzenia--date and place of birth
- d. Miejsce zamieszkania--residence
- e. Data wstapienia do partii--date holder entered the Party
- f. Podpis i pieczec--signature and seal
- g. Skladki czlonkowskie--membership dues
- h. Przeniesienia partyjne--party transfers (internal)
- i. Kary i upomnienia partyjne--penalties and party instructions

Membership Dues

10. "The membership fee amounts to 1% of the member's monthly salary. The member whose monthly earnings are over 1,000 zlotys has to pay more than 1%.

Obligations of a Party Member

11. "I have never heard that any pressure was used in order to get somebody to become a member of the party; on the contrary, it is difficult to get accepted and many members, who have capitalist backgrounds or members refusing to wholeheartedly carry out the orders of the party, are thrown out. A party member is obliged to take part in all meetings of the POP, to carry out orders, to pay his membership fees, and to participate actively in social and political affairs of his country. Frequently, political training and social instruction courses were organized, and it was compulsory to attend them. Members of the Party are compelled to attend the 'Przeszkolenie Polityczne', a political school, and the graduates were then assigned to the job of speakers, agitators, leaflet peddlers etc. according to their ability.

CONFIDENTIAL  
US OFFICIALS ONLY

- 7 -  
CONFIDENTIAL  
US OFFICIALS ONLY

12. "The speakers are used by the Party in meetings, that is to say, after finishing his daily job, a speaker has to go to a plant or factory indicated to him by the section committee of the Party and lead a POP meeting there.
13. "The agitators are sent by the Party to the surrounding villages to make propaganda for the production cooperative, 'Spdzielnia Produkcyjna'. They must go there every time the Division Committee tells them to. It must be realized that dealing with the production cooperatives is a very delicate matter. Some of these agitators lost their lives when they were assaulted by peasants who became enraged over this propaganda.
14. "The leaflet peddlers are responsible for the subscription to magazines and newspapers within the area of a factory or plant.
15. "Complete knowledge of the theories of Marx, Lenin and Stalin was absolutely required of a Party member, but nevertheless, at least 50% of the Party membership knew nothing about these subjects.

Grounds for Dismissal from Party

16. "Party members who fail to pay their membership dues for a period of three months are according to Party regulations automatically thrown out of the Party. This is not applied in practice. Also a Party member who fails to attend Party meetings three times in a row without a valid excuse may be dismissed from the Party without further ado. It is true, however, that the Party authorities (POP) are obliged to notify the member before concrete action has been taken and the member concerned has the right to defend himself against possible injustice.

Privileges of a Party Member

17. "Party members do not receive privileges merely because they are Party members. Those working at the PZPR headquarters do have some privileges. Party employees who are in need of any type of goods not obtainable elsewhere are in a position to buy anything they want at their canteen. Also from time to time they get a ticket for the movies or theater for nothing.

Privileges of Shock Workers

18. "A shock worker or best worker (przodownik pracy), it makes no difference whether he is a Party member or not, always gets privileges. He has no difficulty in obtaining goods that are hard to find, in securing a place to live, for instance at the Workers' Home (Wczasow Pracowniczych). His picture appears in the newspapers together with an article about his work and the methods he used to obtain such outstanding achievements. He receives better care than others in the state-controlled offices. These shock workers march in the first ranks in the May Day parade and carry a sign on their chests. This inscription reveals that the individual surpassed the production quota and the percentage by which it was surpassed. Large pictures of the shock workers are displayed in the main square in Krakow and also on Groza street right next to the ancient royal castle, Wawel. In plants, factories, and Labor organizations, special stands are erected to expose these shock workers to the public eye.

Description of a Party Meeting

19.

50X1-HUM

The meeting was to begin at four o'clock, and there were no more than 11 persons waiting for the arrival of the Division Committee representative by the name of (fmu) Zwierzyniec. He arrived at 4:30 and the meeting could have been opened, but the First Secretary was absent. He had

CONFIDENTIAL  
US OFFICIALS ONLY

CONFIDENTIAL  
US OFFICIALS ONLY

gone out for a few drinks while waiting for the Division Committee representative. The meeting took place in one of the office rooms. Before the opening of the meeting the First and Second Secretary noted how many members were present. There are always more absent than present, and if proper action concerning absences were taken, there would be no longer anyone left in the Party.

20. "At the President's table, the following were seated: **Bwierzyniec**, the Division Committee representative, the First Secretary of the POP, the Second Secretary of the POP, and the man who recorded the minutes. The minutes are always faked and what is really discussed at the meetings is never recorded. The minutes are written up to make them sound as good as possible so as not to cause annoyances. Things which might be compromising are not mentioned. The minutes must be short and concise. Attention is centered on the struggle between the POP and the management of the plant, factory, etc. This struggle was considered by the Party as the best means to fight for the social forces, and naturally the Party instigates the struggle.
21. "The First Secretary opened the meeting by welcoming the Division Committee representative and then turned the meeting over to the representative. The Committee representative reads a report about Marxism, Leninism, proletarian vigilance, war instigators, etc. After this report, the First Secretary opened the meeting for discussion on the matter at hand. Nobody attended the meeting because he wanted to do so mainly because no one knew what to talk about. The First Secretary called on certain people for discussion and they answered with a couple of short sentences bearing no relation to the matter at hand. Those present were requested to submit proposals on the matter discussed. It was then that they talked about the actual deficiency in consumer goods, production errors etc. The members also talked about their personal enemies and accused them of acts which could compromise them (for example, friendship with former property holders, doubtful background, words uttered which may be considered to be anti-Communist, collaboration with agents of the opposition.) There was always a certain amount of inhibition on the part of the members at these meetings because of the presence of the Division Committee representative.
22. "The meeting was closed with the singing of the 'International'. [redacted] at a meeting of the POP, PZPR, which convened at the PCH (Panstwowa Centrala Handlowa--Biuro Spedycyjno Transportowe w Krakowie, State central Bureau of Commerce-Transport and shipping office in Krakow) that among the 30 people at the meeting not one person was able to sing the 'International', and there was a lot of talk about this incident. [redacted] the Division Committee representative would never have dared to 'denounce' this case because he would have been the first to have been reprimanded.
23. "Meetings of the POP were held once or twice a month; meetings of the executive staff were held twice a month; meetings of the POP in the Division Committee were held once a month.

50X1-HUM

50X1-HUM

#### Elections

24. "Elections of the POP are held once a year. It is difficult to accomplish an election meeting because there is never any more than 50% of the member-

CONFIDENTIAL  
US OFFICIALS ONLY



CONFIDENTIAL  
US OFFICIALS ONLY

ship present and more than half must be present before elections can be held. The elections are insignificant because in reality it is the Division Committee which sets up its own people as candidates. Candidates for Party offices are selected by the executive council and ratified by the Division Committee. The Party members have the right to put up additional candidates, but this means nothing because they will not be approved by the Division Committee. Not many people care to accept Party offices and those who accept them are strictly out for themselves. The element of worthiness is rare in the Party. There are also those persons, worthy people, idealists, who really believe what they read in the papers about Communism, and these people are therefore willing to accept Party offices, but the result is always very sad. Either these people become terribly disillusioned about Communism (and they can be considered cured of Communism) or they start to object to Party discipline and consequently often end up in prison. This happened to one of my friends in Poland. He was First Secretary of the POP of the Państwowa Centrala Handlowa, Biuro Spedycyjno-Transportowe of Krakow from Aug-Dec 48.

25. "A voting meeting was more closely watched by the Division Committee than other meetings. Party candidates with provisional membership cards are not permitted to vote. The candidates to be voted on do not have the right to vote, but they voted anyway. The names of the candidates are listed on small type-written cards and these cards are distributed to all members present. One struck out the names of those he did not want to elect and then returned the card to the person collecting the cards. A balloting commission composed of three persons counted the votes and announced the results immediately.

26. "The following two persons worked at the PCH (Państwowa Centrala Handlowa)

50X1-HUM

(a) Zbigniew Zieliński, Chief of the Technical Office of the PCH (Państwowa Centrala Handlowa-Biuro Spedycyjno-Transportowe, State Commerce Center-Freight and Shipping Office) which was dissolved in 1949. [redacted] the PCH was completely liquidated in 1951/. He is presently /1953/ chief of the Technical-Mechanical Office of the Zjednoczenie Budownictwa Miejskiego (Association of local construction in Krakow). At the PCH, BST he was First Secretary of the POP. [redacted]

50X1-HUM

50X1-HUM

(b) Czesław Opalko, formerly was Clerk in the personnel office of the PCH. [redacted]

50X1-HUM

[redacted] during 1949-1950 he was employed in the Municipal Committee of the Party in the propaganda section. At present /1953/ he is working in the 'Polskie Radio' Chor Gerta (Polish Radio-Gerta Choir). [redacted]

50X1-HUM

CONFIDENTIAL  
US OFFICIALS ONLY

CONFIDENTIAL  
US OFFICIALS ONLY

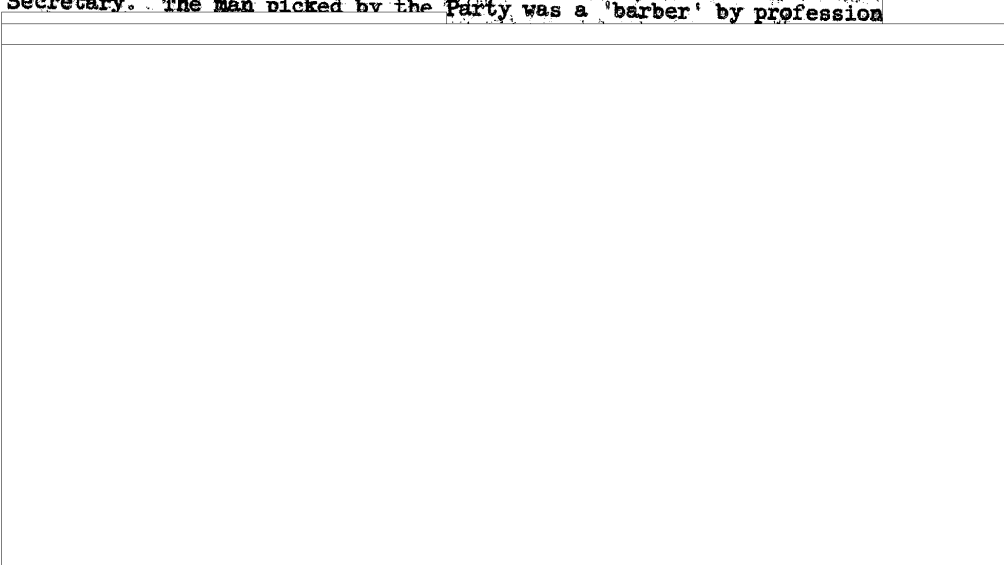


50X1-HUM

27. "At the Nov 1948 meeting, by order of the Party, Zielinski, who was First Secretary, was to be replaced by somebody else appointed by the Division Committee. The meeting was led by Czeslaw Opalko, who was a friend of Zbigniew Zielinski. Czeslaw Opalko found himself in a very bad situation, but before the meeting he had a talk with the First Secretary, and they came to an agreement.

28. "The members of the POP (consisting altogether of about five persons) were opposed to voting for Zielinski and he was elected unanimously, that is to say, against the order of the Division Committee, but since he had been informed by the Division Committee by way of Czeslaw Opalko, he refused to accept the position. The members went home, all having voted for the individual picked by the Party because there were no other candidates. Certainly Zbigniew Zielinski was happy to get rid of the job of First Secretary. The man picked by the Party was a 'barber' by profession

50X1-HUM



CONFIDENTIAL  
US OFFICIALS ONLY

CONFIDENTIAL  
US OFFICIALS ONLY

CONFIDENTIAL  
US OFFICIALS ONLY