

25X1

CLASSIFICATION ~~SECRET~~

COUNTRY East Germany REPORT

TOPIC Altenburg Airfield

EVALUATION [redacted] PLACE OBTAINED [redacted] 25X1

DATE OF CONTENT [redacted] 25X1

DATE OBTAINED 28 December 1954 25X1

REFERENCES [redacted]

PAGES 2 ENCLOSURES (NO. & TYPE) 1 - sketch on ditto with legend

REMARKS

This is UNEVALUATED Information

25X1

1. During the period from 14 November 1954, air activity was observed very seldom in the vicinity of Altenburg airfield. Only intermediate landings by bi planes were regularly made. On 14 November no air activity was observed. Twenty MiG-15s or U-MiG-15s were parked on the dispersal area in the southeastern corner of the landing field and 10 aircraft were parked side-by-side on the dispersal area of the alert aircraft at the northeastern end of the runway. The aircraft [redacted] were observed. 1 25X1

2. An umbrella-type antenna mounted on a wooden mast 8 to 10 meters high was observed in the wooded area north of the billeting area inside the field boundary. The antenna extended beyond the highest trees in the surroundings. A cable extended from the antenna to a radio mast which was parked near the mast. 2 25X1

3. No changes were observed on the AA gun emplacement on the southern edge of the landing field.

4. The only sentry observed around the field was posted near the entrance of the field.

5. Precise observations could be made through the damaged fence which is located along the road the northeastern end of the runway not far from Teichgraben. The place of observation is located at the point where the road from Milchwitz extends to the end of the runway. [redacted] sketch of the field observed from this point. 25X1

6. The following motor vehicles were observed at the field:

Trucks:

[redacted] 25X1

Radio Truck: Jeep:

[redacted] 25X1

7. Between 28 November and 3 December, no air activity was observed at Altenburg airfield. It could not be determined whether or not the occupation at the field had changed. Many Soviet dependents were quartered at the field who used the municipal busses for shopping trips to the town. 1

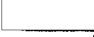
CLASSIFICATION ~~SECRET~~



SECRET




25X1

-2-

1.  Comment. It is believed that Altenburg airfield is still occupied by two fighter regiments. A total of 30 MiG-15s or U-MiG-15s were counted at the landing field. 25X1

2.  Comment. The statements on the radio and radar installations were received previously except for the information on the umbrella-type antenna which is reported for the first time.  25X1

3.  Comment. This is the first detailed information on the northeastern end of the runway and the dispersal area of the alert aircraft. For sketch of airfield, see Annex. 25X1



25X1

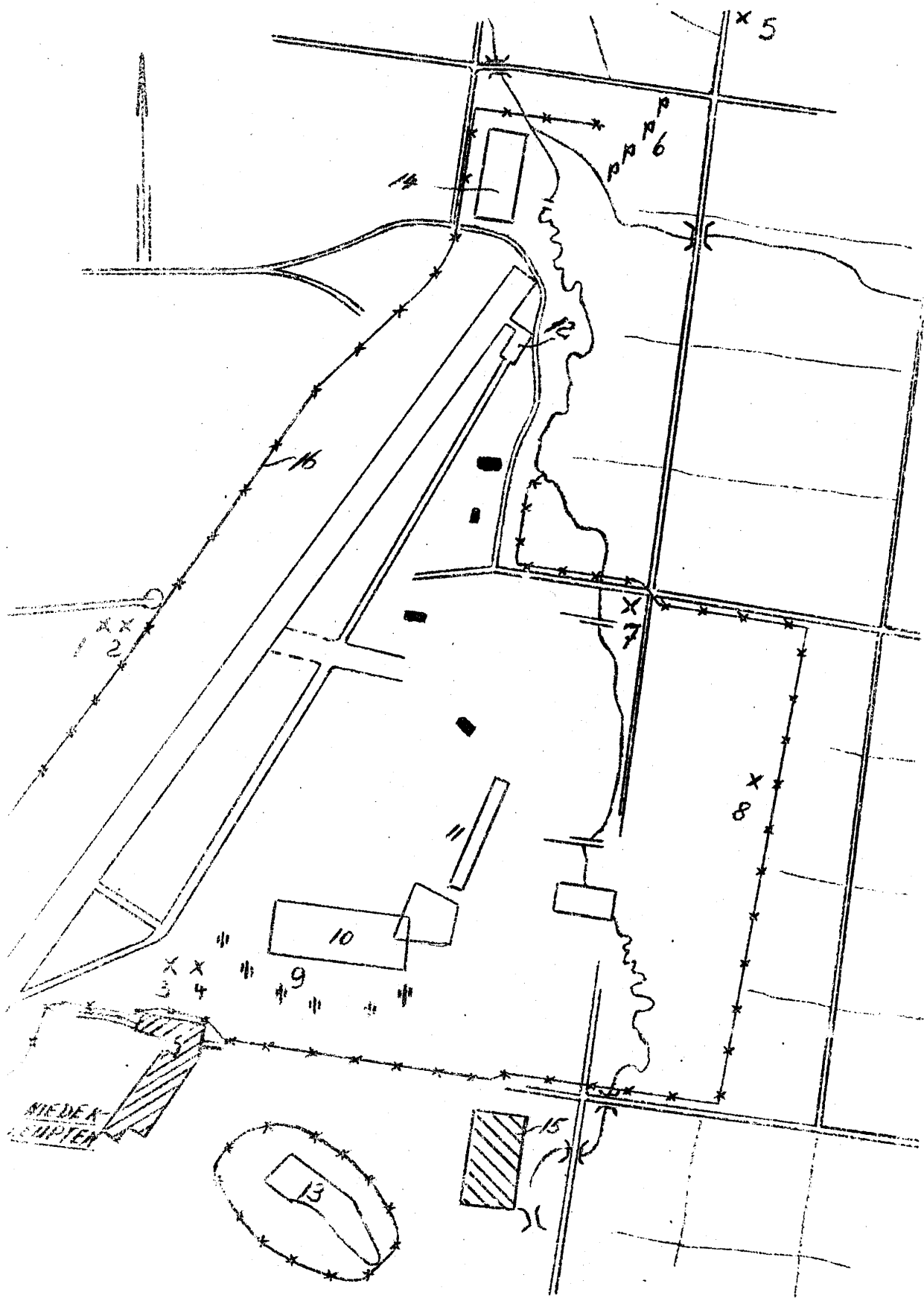
SECRET

Annex

25X1

Altenburg Airfield

25X1



SECRET

For legend, see next page

SECRET

Legend

25X1

-2-

25X1

Altenburg Airfield

- 1 Token-type radar set
- 2 Fishnet-type radar set
- 3 Kniferest-type radar set
- 4 Fishnet-type radar set
- 5 Radio installation with single mast
- 6 Flare path; number of lamps could not be determined
- 7 Umbrella-type antenna
- 8 Tower with 3 rod antennas
- 9 AA gun emplacement
- 10 Dispersal area
- 11 Dispersal area
- 12 Dispersal area for alert aircraft
- 13 Ammunition dump
- 14 Target range
- 15 Factory
- 16 Fence

SECRET