

635305

CENTRAL INTELLIGENCE AGENCY

INFORMATION REPORT

This Document contains information affecting the National Defense of the United States, within the meaning of Title 18, Sections 793 and 794, of the U.S. Code, as amended. Its transmission or revelation of its contents to or receipt by an unauthorized person is prohibited by law. The reproduction of this form is prohibited.

SECRET/CONTROL - U.S. OFFICIALS ONLY

25X1

COUNTRY	Poland	REPORT	
SUBJECT	Organizational Chart of the Gdansk Shipyards	DATE DISTR.	21 July 1954
DATE OF INFO.		NO. OF PAGES	4
PLACE ACQUIRED		REQUIREMENT NO.	RD 25X1
		REFERENCES	

This is UNEVALUATED Information

THE SOURCE EVALUATIONS IN THIS REPORT ARE DEFINITIVE.
THE APPRAISAL OF CONTENT IS TENTATIVE.
(FOR KEY SEE REVERSE)

25X1

The following is the legend to the attached organizational chart of the Gdansk Shipyards in Gdansk (Danzig).

1. Soviet Maritime Registry (M.R.R.S). This enterprise is controlled directly from Moscow and has about 28 employees.
2. Polish Ministry for Machine Industry at Warsaw. This ministry is subordinate to the C.Z.P.O. (Central Administration for the Shipbuilding Industry).¹
3. C.Z.P.O.
4. Polish Ship Registry. The registry is subordinate to the M.R.R.S. and C.Z.P.O.
5. Central Ship Construction Bureau. The bureau consists of a total of 500 workers and employees. These are divided into a number of sections. Construction plans are worked out and Soviet plans are adapted and translated into Polish. The bureau is located within the shipyard area. Thirty Polish engineers, who graduated before the war, work there; only three of them are Party members. The bureau is controlled by the Soviet Classifying Association and receives building permits and direction from the latter. A similar bureau, C.B.K.O. 2, located on ulica Metejki at Wrzeszcz, belongs to the navy. At this bureau are employed, almost exclusively, Soviet officers and engineers. This bureau provides directives regarding construction of trawlers, cutters and various motor boats.
6. Security Department, i.e., U.B. (Security Police) and K.M.W. (Internal Security Corps) for guarding of installations and supervision of personnel.
7. Chief Director for the shipyard.
8. Shipyard Workers' Trade Union.

25 YEAR RE-REVIEW

SECRET/CONTROL - U.S. OFFICIALS

STATE	X	ARMY	X	NAVY	X	AIR	X	FBI		AEC				
-------	---	------	---	------	---	-----	---	-----	--	-----	--	--	--	--

(Note: Washington Distribution Indicated By "X"; Field Distribution By "#")

SECRET/CONTROL - U.S. OFFICIALS ONLY

-2-

9. Shipyard section of the PZPR (Polish United Workers' Party).
10. Ship-building control.
11. Personnel Chief for the entire shipyard. This man is always an active Communist who attempts to employ reliable Communists. The majority of the workers and other employees are, however, not in the Party. The Personnel Chief collaborates with the Security Department, and both of them are in charge of informers in the shipyard.
12. Chief Designer.
13. Chief Technologist.
14. Technical Control Department.
15. Department for ship hulls.
16. Department for assembly of ship hulls.
17. Equipment Department.
18. Experiment and test station.
19. Sheet metal and iron stores.
20. Machine hall.
21. Mold-work shop.
22. Sheet metal shop.
23. Frame-building department.
24. Section assembly department.
25. Assembly of vessels on the ways.
26. Light forge (tool shop?)
27. Plumbing department.
28. Machine assembly department for auxiliary engines.
29. Electrical installation department.
30. Machine assembly department.
31. Forge department.
32. Foundry department.
33. Paint department.
34. Boiler shop.
35. Department for installation of boilers.
36. Installation department for fittings.

25X1

1. Comment: the Ministry for the Machine Industry is subordinate to one of the members of the Council of Ministers and the CZPO is subordinate to the Ministry of the Machine Industry. This latter chain of command appears more logical.

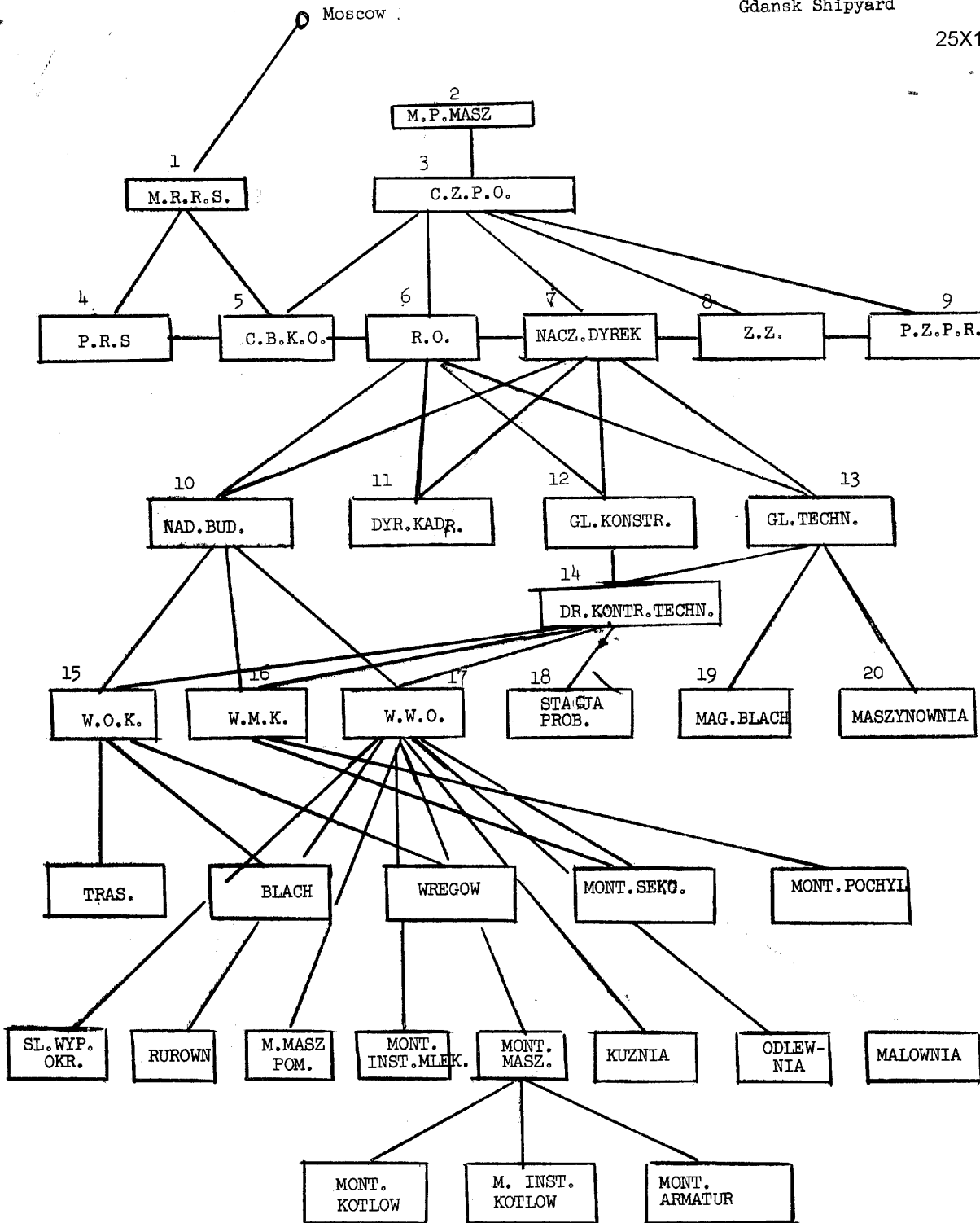
25X1

SECRET/CONTROL - U.S. OFFICIALS ONLY

SECRET/CONTROL - U.S. OFFICIALS ONLY

Organization of the
Gdansk Shipyard

25X1



SECRET/CONTROL - U.S. OFFICIALS ONLY

Page Denied