

FLD  
218

CENTRAL INTELLIGENCE AGENCY

INFORMATION REPORT

This Document contains information affecting the National Defense of the United States, within the meaning of Title 18, Sections 793 and 794, of the U.S. Code, as amended. Its transmission or revelation of its contents to or receipt by an unauthorized person is prohibited by law. The reproduction of this form is prohibited.

SECRET/CONTROL - U.S. OFFICIALS ONLY  
SECURITY INFORMATION

25X1

COUNTRY	Bulgaria	REPORT	
SUBJECT	The Rhodope Mining Basin	DATE DISTR.	22 October 1953
DATE OF INFO.		NO. OF PAGES	9
PLACE ACQUIRED		REQUIREMENT NO.	RD
		REFERENCES	25X1

This is UNEVALUATED Information

THE SOURCE EVALUATIONS IN THIS REPORT ARE DEFINITIVE.  
THE APPRAISAL OF CONTENT IS TENTATIVE.  
(FOR KEY SEE REVERSE)

25X1

1. Enclosed in this report are five sketches concerning locations of mines, factories, and installations in the Rhodope mining region:
  - a. Rudozem (N 41-29, E 24-51);
  - b. Ribnitsa (N 41-28, E 24-52);
  - c. Srednogortsi (N 41-32, E 24-55). One can see on the sketch the extraction place for sand and rocks used for construction of installations at Strashimir, and of ballast which is sent toward Kurdzhali;
  - d. Madan (N 41-30, E 24-57). Sketch of the "Flotzavod" (flotation plant) installations. There are mine pits all around this aggregation; and
  - e. Strashimir. There is no locality by this name, and for the moment there are no persons there except employees of the mines and the factory. Concrete road blocks have been placed on the old road to Zlatograd and on the roads which have been constructed for the mine.
2. The sketch of the Strashimir area shows the following installations:
  1. Mine administration (2-story building).
  2. Mine drifts.
  3. Scale and control post.
  4. Billets of Trudovaks and secretarial offices.
  5. Dining hall.
  6. "Narmag" (Naroden Magazine; People's Store).
  7. Kulturen Dom (Cultural Club).
  8. Houses of the miners and laborers.
  9. Plant under construction.
  10. Cable line (two kilometers long).
  11. Road under construction.

25 YEAR RE-REVIEW

SECRET/CONTROL - U.S. OFFICIALS ONLY

STATE	X	ARMY	X	NAVY	X	AIR	X	FBI		AEC		OER	Ev	X
-------	---	------	---	------	---	-----	---	-----	--	-----	--	-----	----	---

(Note: Washington Distribution Indicated By "X"; Field Distribution By "#".)

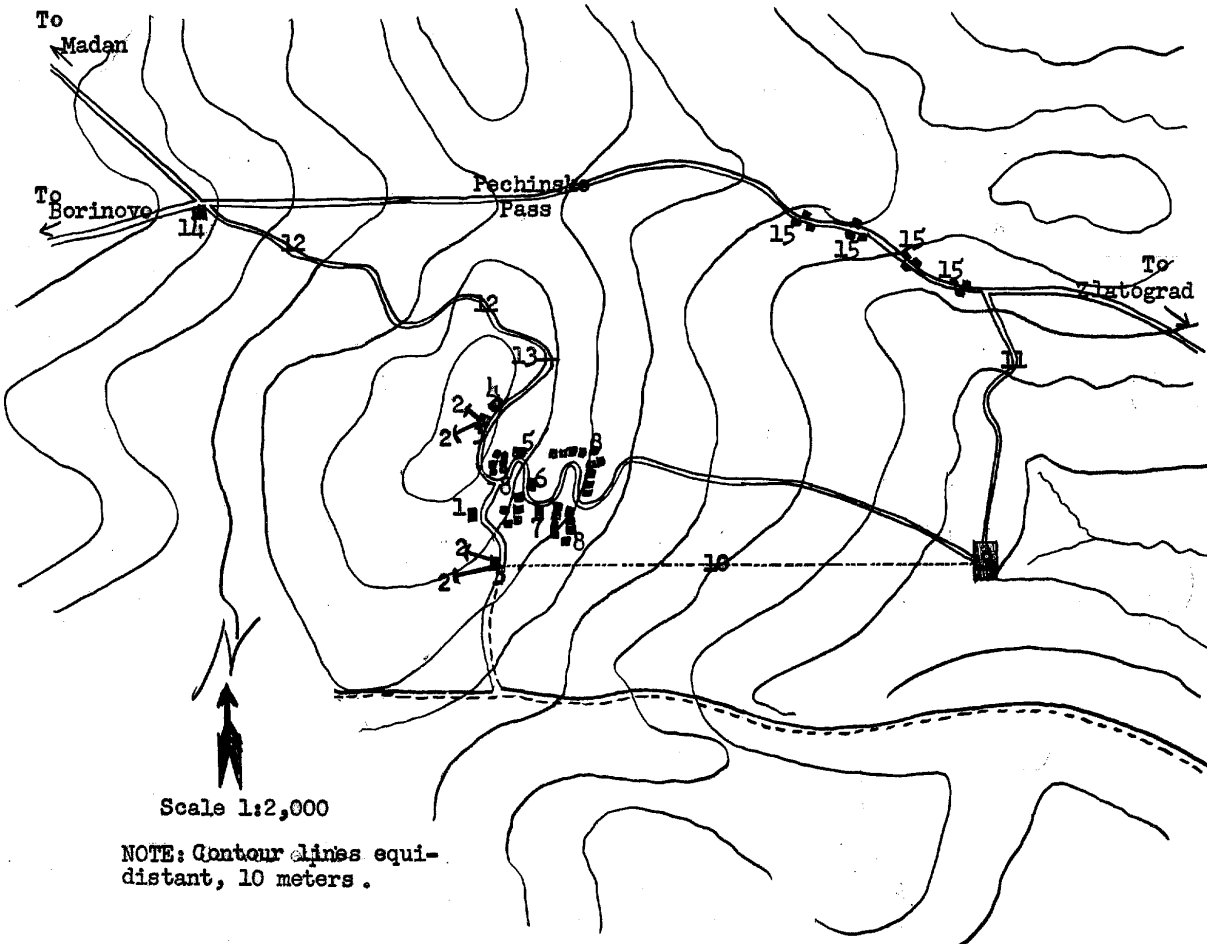
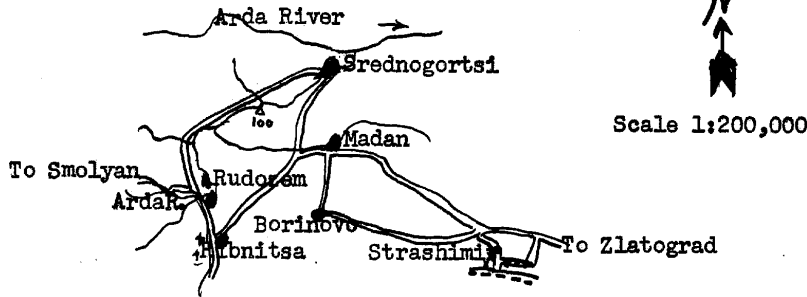
SECRET/CONTROL - U.S. OFFICIALS ONLY

-2-



25X1

- 12. New road (completed). Two kilometers long.
- 13. Gateway. Façade bears inscription: "Rudnik Strashimir" (Strashimir Mine).
- 14. Militia post.
- 15. Concrete blocks to be used to bar the road.



SECRET/CONTROL - U.S. OFFICIALS ONLY

SECRET/CONTROL - U.S. OFFICIALS ONLY

-3-

25X1

3. The sketch of the Rudozem area on page 4 shows the following installations:

1. Trenches.
2. Machine gun nests.
3. Concrete blocks for barring the road.
4. School (in the old village of Rudozem).
5. Border Guard barracks.
6. Militia post.
7. Municipal buildings.
8. Bakery and bake-shop.
9. Houses for Soviet families.
- 9a. Day nursery.
10. Living quarters of Soviet specialists.
11. Soviet Club.
12. Dining hall.
13. Large shop.
14. Canteen.
15. Sports field.
16. Cafe-restaurant.
17. Park.
18. Gasoline depot.
19. Technical offices of the "Treti Stroichastuk" (Third Construction Section).
20. Auto pool.
21. Directorate of the auto pool.
22. Quarters of the drivers.
24. Militia post and barracks.
25. Living quarters of the Militiamen.
26. Temporary barracks (quarter under construction).
27. Compressors.
28. Drills.
29. Factory directorate (under construction).
30. Militia post.
32. Materiel depot.
33. Depot for unprocessed ore.
34. Cable line to Ribnitsa (under construction).
35. Plant (3-story building).
36. Overfall.
37. Machine section.
38. Garage-workshop.
39. Carpentry and wood-work shops.
40. Depot for tires, work clothing, and small materiel.
41. Blocks of modern 3-story houses.
42. New bridge (the one located near the municipal buildings was too weak to support trucks).
43. Materials depot.
44. Kulturen Dom (Cultural Club).
45. Offices of the materials depot.
46. New road under construction.

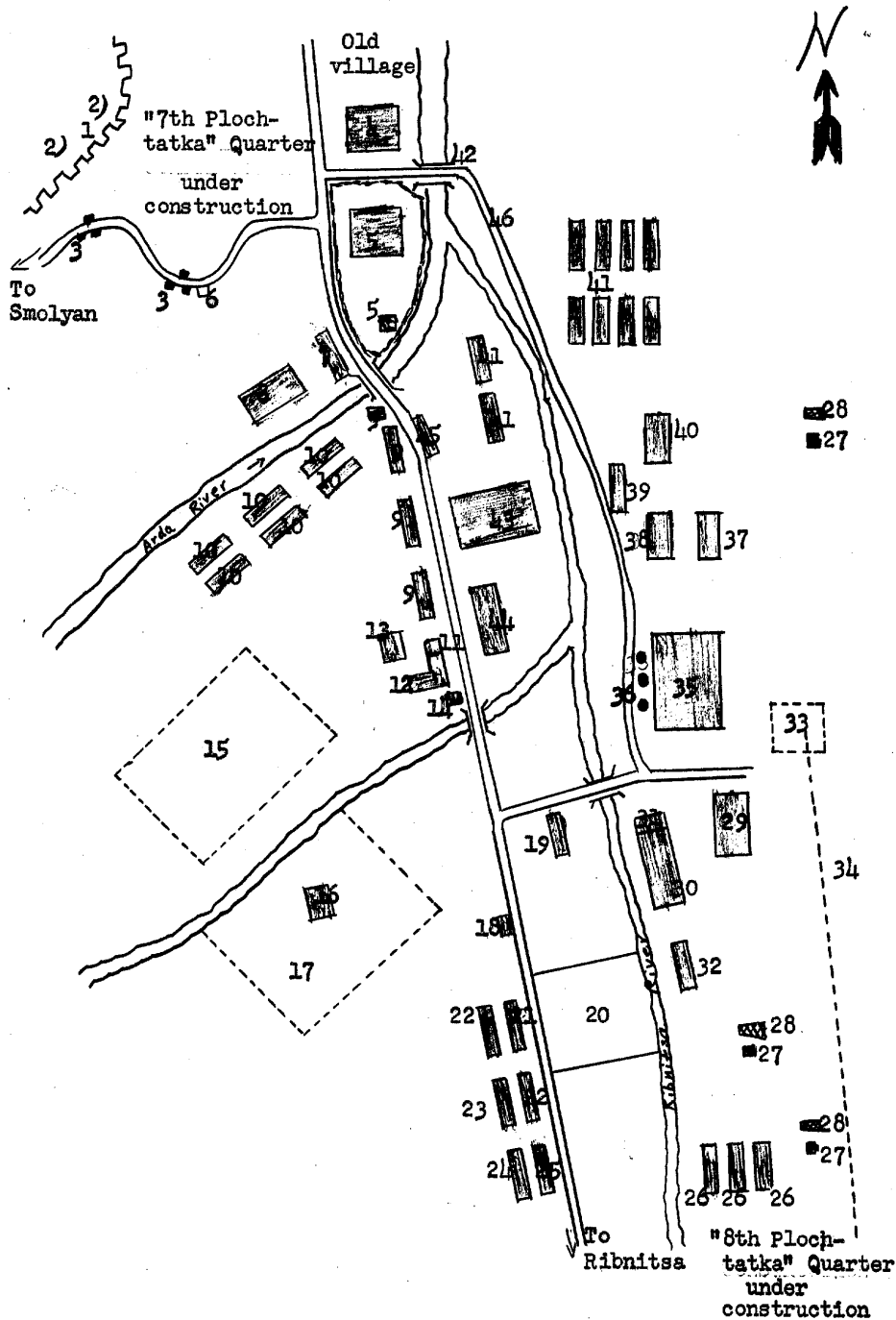
SECRET/CONTROL - U.S. OFFICIALS ONLY

SECRET/CONTROL - U.S. OFFICIALS ONLY

-4-



25X1



SECRET/CONTROL - U.S. OFFICIALS ONLY

SECRET/CONTROL - U.S. OFFICIALS ONLY

-5-

25X1

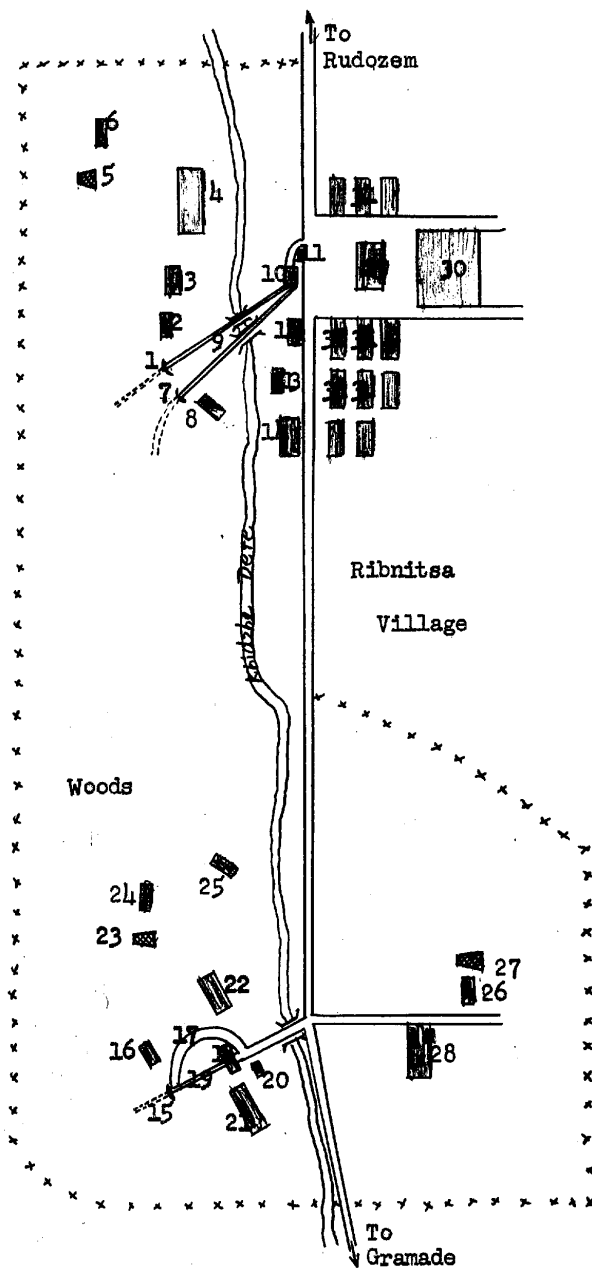
4. The sketch of the Ribnitsa area on page 6 shows the following installations:
1. Mine drift 700 meters long.
  2. Forge.
  3. Offices.
  4. Miners' house.
  5. Drill.
  6. Compressor.
  7. Mine drift exploited to 35 meters.
  8. Compressed air for the drills - compressor.
  9. Narrow gauge rail line for transporting ore from the mines to the loading chutes (approximately 60 meters long).
  10. Loading chutes (for loading trucks).
  11. Militia post.
  12. Quarters of the loading chute workers.
  13. Militiamens' barracks.
  14. Dining hall and canteen.
  15. Mine drift (hardly started).
  16. Compressor.
  17. Road leading to the mine drift.
  18. Loading chute.
  19. Sloping overfall from the drift to the loading chutes.
  20. Living quarters of the miners.
  22. Living quarters of the laborers.
  23. Drill.
  24. Compressor.
  25. Building-depot.
  26. Compressor.
  27. Drill.
  28. Lodgings and offices of the Gorubso prospectors.
  29. Kulturen Dom (Cultural Club), surrounded by a garden.
  30. Auto pool.
  31. Workers' lodgings.
  32. Directorate of the "Chetv'orto Rudo Upravlenie" (Fourth Mining Administration).

SECRET/CONTROL - U.S. OFFICIALS ONLY

SECRET/CONTROL - U.S. OFFICIALS ONLY

-6-

25X1



5. The sketch of the Madan area on page 7 shows the following installations:

1. Ore treatment plant. Occupies area 150 by 100 meters.
2. Administrative offices of the plant.
3. Auto pool of Sovbolstroï (Soviet-Bulgarian construction company).
4. Hutments of Trudovaks employed at the plant.

SECRET/CONTROL - U.S. OFFICIALS ONLY

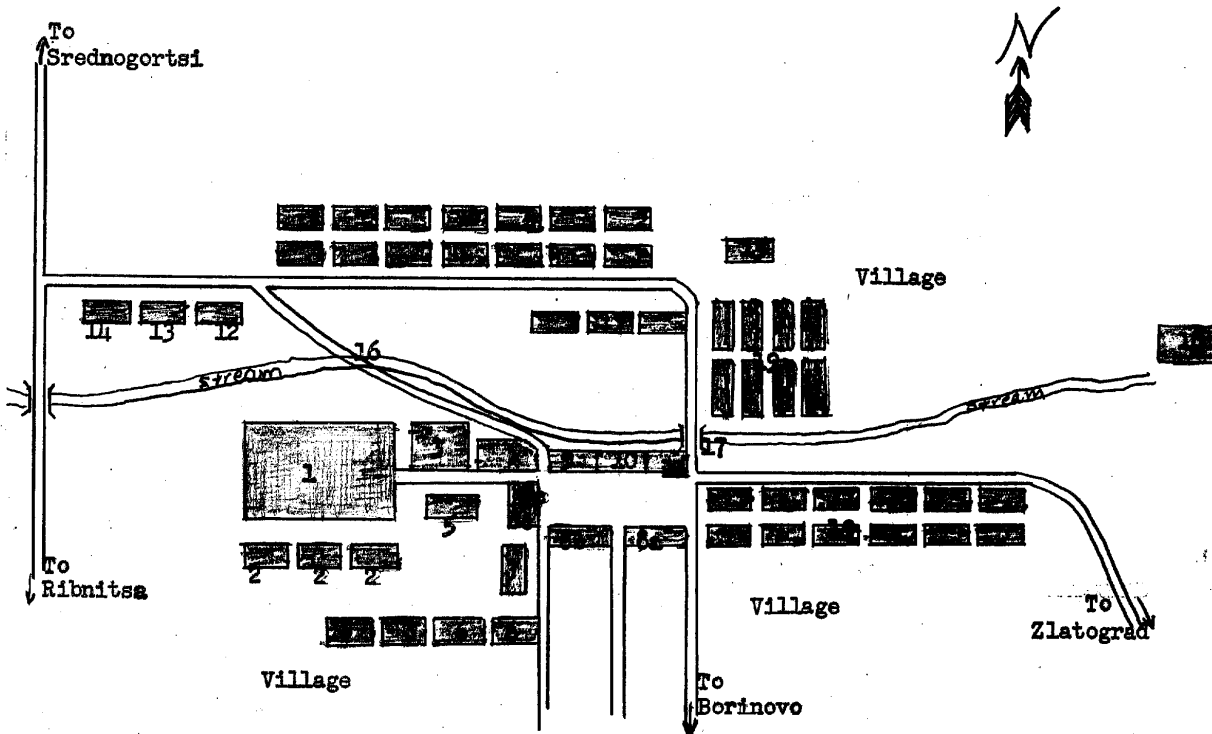
SECRET/CONTROL - U.S. OFFICIALS ONLY

-7-

25X1

5. Militia barracks.
6. Living quarters of the miners.
7. Municipal buildings.
- 8a. "Narkoop" (Narodna Kooperative; People's Cooperative).
- 8b. "Narkoop" annex - vegetable market.
- 8c. "Narkoop" annex - cafe-restaurant.
9. Store (clothing and shoes).
10. Bakery and bake-shop.
11. Hairdresser.
12. Dining hall for Gorubso workers.
13. Canteen.
14. Billets of Trudovaks employed on road work.
15. Kulturen Dom (Cultural Club).
16. Ford used by the trucks because the bridge (17) is too weak.
17. Bridge.
18. ~~Four~~ ~~panutention~~ (sic) under construction.
19. Blocks of workers' dwellings (2-story buildings).

Distance from the west end of building 14 to the bend of the road: 600 meters.  
 Distance from the bend of the road to bridge 17: 80 meters.  
 Distance from the bridge 17 to the plant (18) under construction: 500 meters.  
 Distance from the bridge 17 to the ore plant: 300 meters.



SECRET/CONTROL - U.S. OFFICIALS ONLY

SECRET/CONTROL - U.S. OFFICIALS ONLY

-8-

25X1

6. The sketch of the Srednogortsi area on page 9 shows the following installations:
- A. Ore washing plant.
    - 1. Directorate and offices.
    - 2. Timekeeping office (for entering and leaving the plant).
    - 3. Scale.
    - 4. Laboratory.
    - 5. Overfalls in the form of inverted funnels (for the ores prior to treatment).
    - 6. Endless belt transporting the ore into the loading chutes.
    - 7. Treatment plant.
    - 8. Loading chute into the trucks (for washed ore).
    - 9. Diesel electric plant furnishing current to Srednogortsi, Rudozem, and Ribnitsa.
  - B. Gorubso auto pool. Depot and workshops.
  - C. Gasoline depot.
  - D. Large depot of "Narmag" (Naroden Magazin; People's Store).
  - E. Trudovak lodgings.
  - F. Shop.
  - G. Workers' dining hall.
  - H. Kulturen Dom (Cultural Club).
  - I. Miners' lodgings.
  - J. Lodgings for workers of the sand pit.
  - K. Wooden bridge.
  - L. Place of extraction of sand, ballast, and stones. After construction was completed at Srednogortsi, stone was transported to Strashimir where work is still under way.
  - M. Militia post.

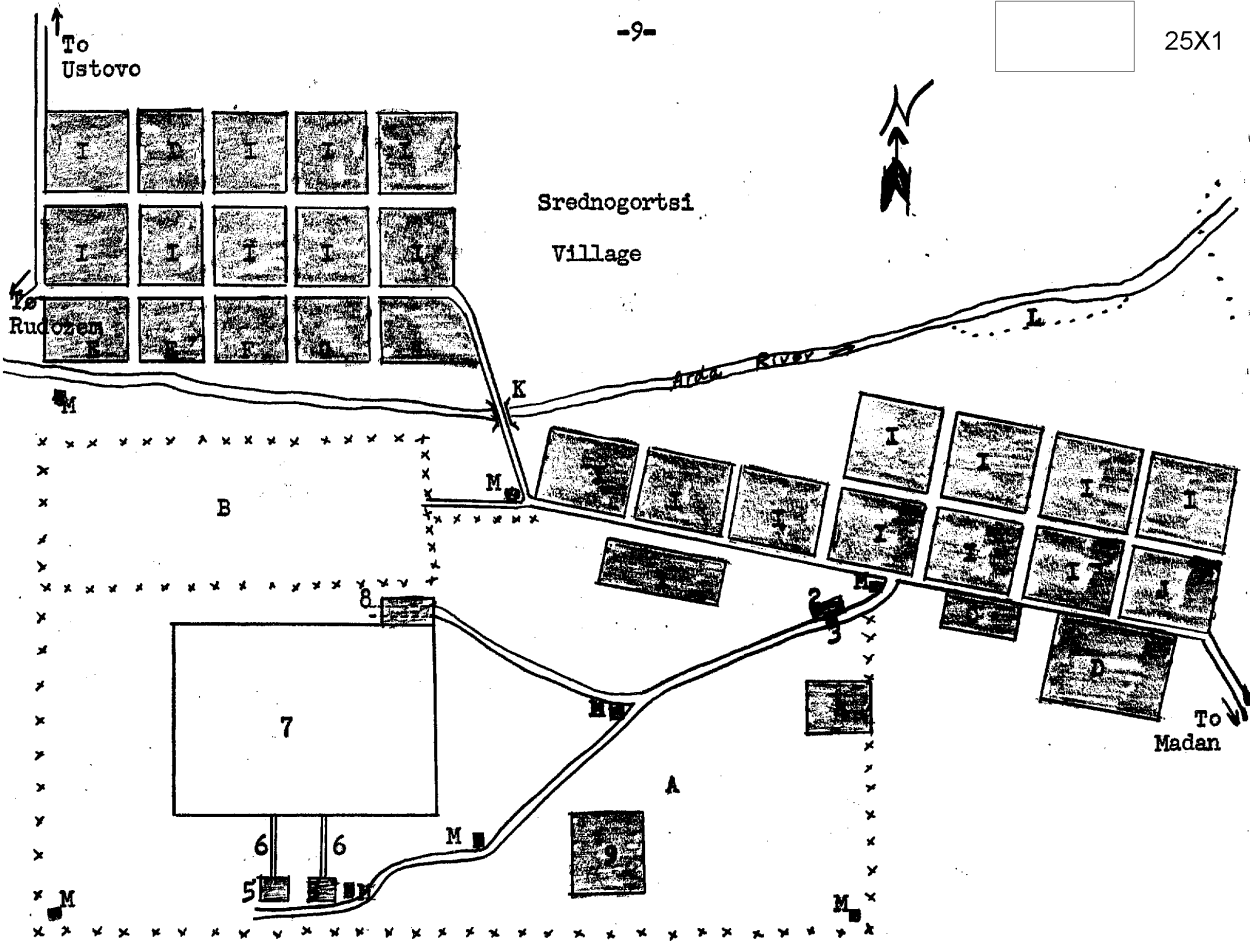
SECRET/CONTROL - U.S. OFFICIALS ONLY



SECRET/CONTROL - U.S. OFFICIALS ONLY

-9-

25X1



SECRET/CONTROL - U.S. OFFICIALS ONLY