

**CENTRAL INTELLIGENCE AGENCY**

**INFORMATION REPORT**

This Document contains information affecting the National Defense of the United States, within the meaning of Title 18, Sections 793 and 794, of the U.S. Code, as amended. Its transmission or revelation of its contents to or receipt by an unauthorized person is prohibited by law. The reproduction of this form is prohibited.

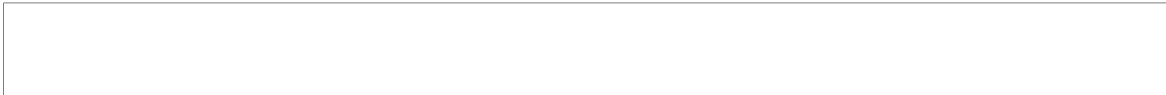
**SECRET**  
SECURITY INFORMATION

<b>COUNTRY</b>	Rumania	<b>REPORT</b>	<input type="text"/>	25X1
<b>SUBJECT</b>	The Galati Post Office	<b>DATE DISTR.</b>	17 July 1953	
		<b>NO. OF PAGES</b>	5	
<b>DATE OF INFO.</b>	<input type="text"/>	<b>REQUIREMENT NO.</b>	RD	
<b>PLACE ACQUIRED</b>	<input type="text"/>	<b>REFERENCES</b>		25X1

This is UNEVALUATED Information

THE SOURCE EVALUATIONS IN THIS REPORT ARE DEFINITIVE.  
THE APPRAISAL OF CONTENT IS TENTATIVE.  
(FOR KEY SEE REVERSE)

25X1



1. The Post Office in Galati is located in the central section of the city at 8 Strada Alexandru Sahia (formerly Lahovari). The Galati Post Office employed 117 clerks some of whom also worked for the telephone service.
2. In 1951, the Post Office and the telephone service merged. The director was Alexander Lascu, who was assisted by Dutescu (fnu).
3. The Galati Post Office was organized into a secretariate and branches. The Secretariate was headed by Ion Ilie who had two typists. The Finance branch was staffed by one employee and the accounting branch was headed by Ion Oprisan assisted by 14 employees. The mail sorting and delivery branch had 30 mailmen; the telegraph section had seven operators assisted by eight employees; the money order section had three employees and 25 employees worked at the counters in the main lobby. Four employees worked at the registered letters section and five employees worked in the warehouse. There were two drivers, four charwomen, and four watchmen employed by the Post Office. The Cadre branch was staffed by four Communist Party members.
4. Four self-explanatory sketches are attached.

25 YEAR  
RE-REVIEW

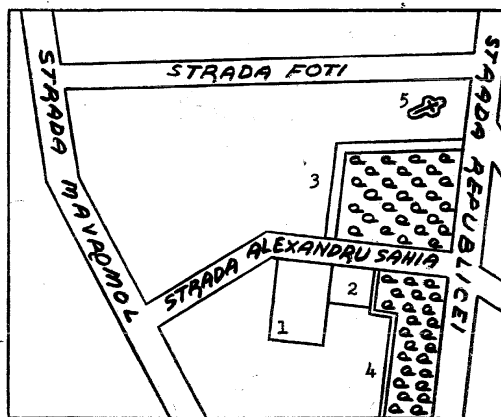
**SECRET**

STATE	X	ARMY #	X	NAVY #	X	AIR #	X	FBI		AEC				
-------	---	--------	---	--------	---	-------	---	-----	--	-----	--	--	--	--

(Note: Washington Distribution Indicated By "X"; Field Distribution By "#".)



SECRET



SKETCH 1

Location of the Post Office in Galati

Legend:

1. The Post Office
2. Telephone Building
3. Public garden
4. Public garden recently developed
5. Greek Church

- 2 -

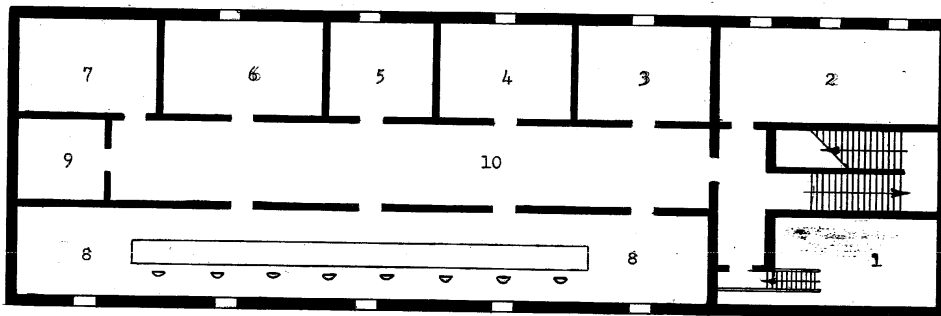
SECRET



25X1

SKETCH 2

GALATI POST OFFICE  
Plan of the basement



Legend:

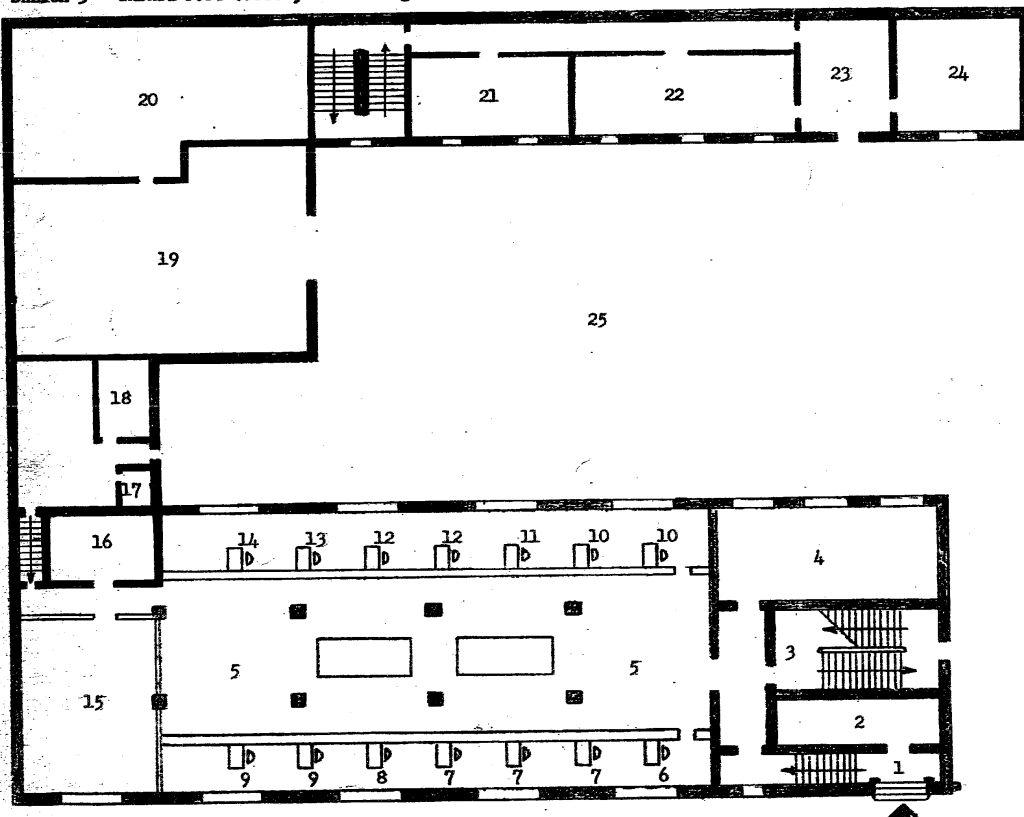
- 1. Room occupied by the parcel distribution service
- 2. Storeroom for printed material sorted
- 3. Room where the registered letters are sorted
- 4. Offices
- 5. Room of the Security officers in charge with the censorship of correspondence
- 6. Room for the storage of used equipment
- 7. Storeroom
- 8. Room
- 9. Corridor

SECRET

SECRET

- 3 -

SKETCH 3 - GALATI POST OFFICE, Plan of groundfloor



SKETCH 3

GALATI POST OFFICE  
Plan of groundfloor

SECRET

25X1

Legend:

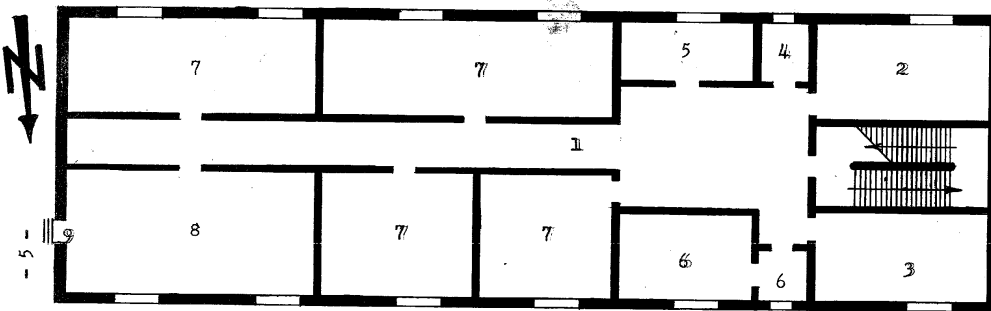
- 1. Vestibule
- 2. Storeroom
- 3. Staircase
- 4. Office of the chief of the Post Office
- 5. Public hall
- 6. Counter for general deliveries
- 7. Counters for registered letters
- 8. Counter where stamps are sold
- 9. Counters for the presentation of telegrams
- 10. Counter for enquiries and complains
- 11. Counters for the expedition of postal money orders
- 12. Counters for the expedition of parcels
- 13. Counter for the radio subscription
- 14. Desk of the chief of the personnel
- 15. Offices of the secretariate
- 16. Cashier's office
- 17. Restrooms
- 18. Bathroom
- 19. Garage
- 20. Room for storage of printed matter
- 21. Room unidentified
- 22. Offices
- 23. Hall
- 24. Office of the maintainance service
- 25. Courtyard

NOTE: Rooms 21, 22, 23 and 24 were recently added. The basement of these rooms is converted into a storeroom. A large hall for Party gatherings is built on top of these rooms.

SKETCH 4  
GALATI POST OFFICE  
Plan of the first floor.

Legend:

- 1. Corridor
- 2. Telegraph office
- 3. Telegraph office
- 4. Barber shop
- 5. Dentist
- 6. Offices for Cadre
- 7. Offices
- 8. Room for teletypists
- 9. Door leading to the central of the Telephone Building



SECRET

SECRET