

CENTRAL INTELLIGENCE AGENCY

INFORMATION REPORT

This Document contains information affecting the National Defense of the United States, within the meaning of Title 18, Sections 793 and 794, of the U.S. Code, as amended. Its transmission or revelation of its contents to or receipt by an unauthorized person is prohibited by law. The reproduction of this form is prohibited.

SECRET/CONTROL - U.S. OFFICIALS ONLY  
SECURITY INFORMATION

COUNTRY	Bulgaria	REPORT	
SUBJECT	Map of the Ruse Area Showing Villages, Highways, Railroads, the Ruse-Giurgiu Bridge, Factories and Military Installations	DATE DISTR.	20 March 1953
DATE OF INFO.		NO. OF PAGES	3
PLACE ACQUIRED	<input type="text"/> 25X1	REQUIREMENT NO.	RD
		REFERENCES	

THE SOURCE EVALUATIONS IN THIS REPORT ARE DEFINITIVE.  
THE APPRAISAL OF CONTENT IS TENTATIVE.  
(FOR KEY SEE REVERSE)

25X1 The enclosed map is derived from a published map of the area  which  has identified the following:

- 25X1 1. The city of Ruse.
- 25X1 1a. Recently built-up section of Ruse.
- 25X1 2. Electric cables installed during 1950.
- 25X1 3. Marine repair workshop.
- 25X1 4. Ferryboat dock.
- 5. Factory for wire and bolts (Zh. T. I. - Zhelezna Telena Industriya).
- 6. Ruse Garrison Summer Camp, Garden and Vineyard.
- 7. Electric Transformer finished in 1950.
- 8. Petroleum refinery.
- 9. Sugar refinery.
- 10. Projected bridge over the Danube River.
- 11. Ruse Garrison Summer Camp.
- 12. Model Farm.
- 13. Village Slobozia (N 43-51, E 25-54).
- 14. City of Giurgiu.
- 15. Village of Sreden Chiflik (N 43-48, E 25-57).<sup>1</sup>
- 16. Village of Dolapite (N 43-48, E 25-56).<sup>1</sup>
- 17. Balta Maharul (swamp).
- 18. Gara Cama River.
- 19. Kara Lom (formerly Cherni Lom) River.
- 20. Danube River.
- 21. Ruse - Plevan Railroad.
- 22. Ruse - Varna Railroad.
- 23. Ruse - Plevan Highway.
- 24. Ruse - Silistra Highway.
- 25. Ruse - Varna Highway.

25X1  Comment: Résultats Préliminaires de Recensement de la Population au 31 Décembre 1946 (Sofia 1947) gives the population of Sredna Kula (formerly Sreden Chiflik) as 2,347, and of Dolapite as 1,590.

SECRET/CONTROL - U.S. OFFICIALS ONLY

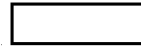
STATE	X	ARMY	X	NAVY	X	AIR	X	FBI	AEC					
-------	---	------	---	------	---	-----	---	-----	-----	--	--	--	--	--

(Note: Washington Distribution Indicated By "X"; Field Distribution By "#")

193

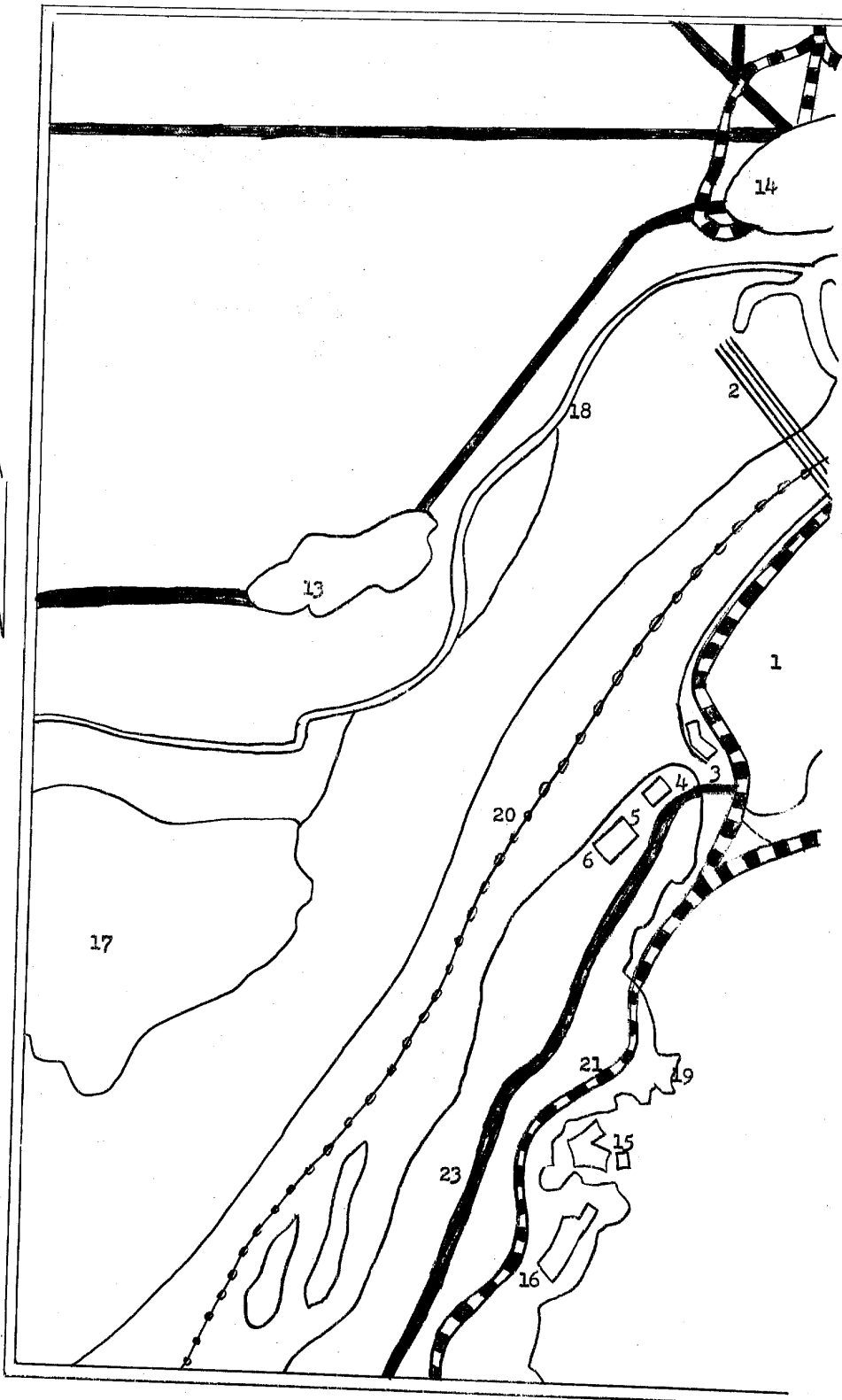
25X1

SECRET/CONTROL - U.S. OFFICIALS ONLY



-2-

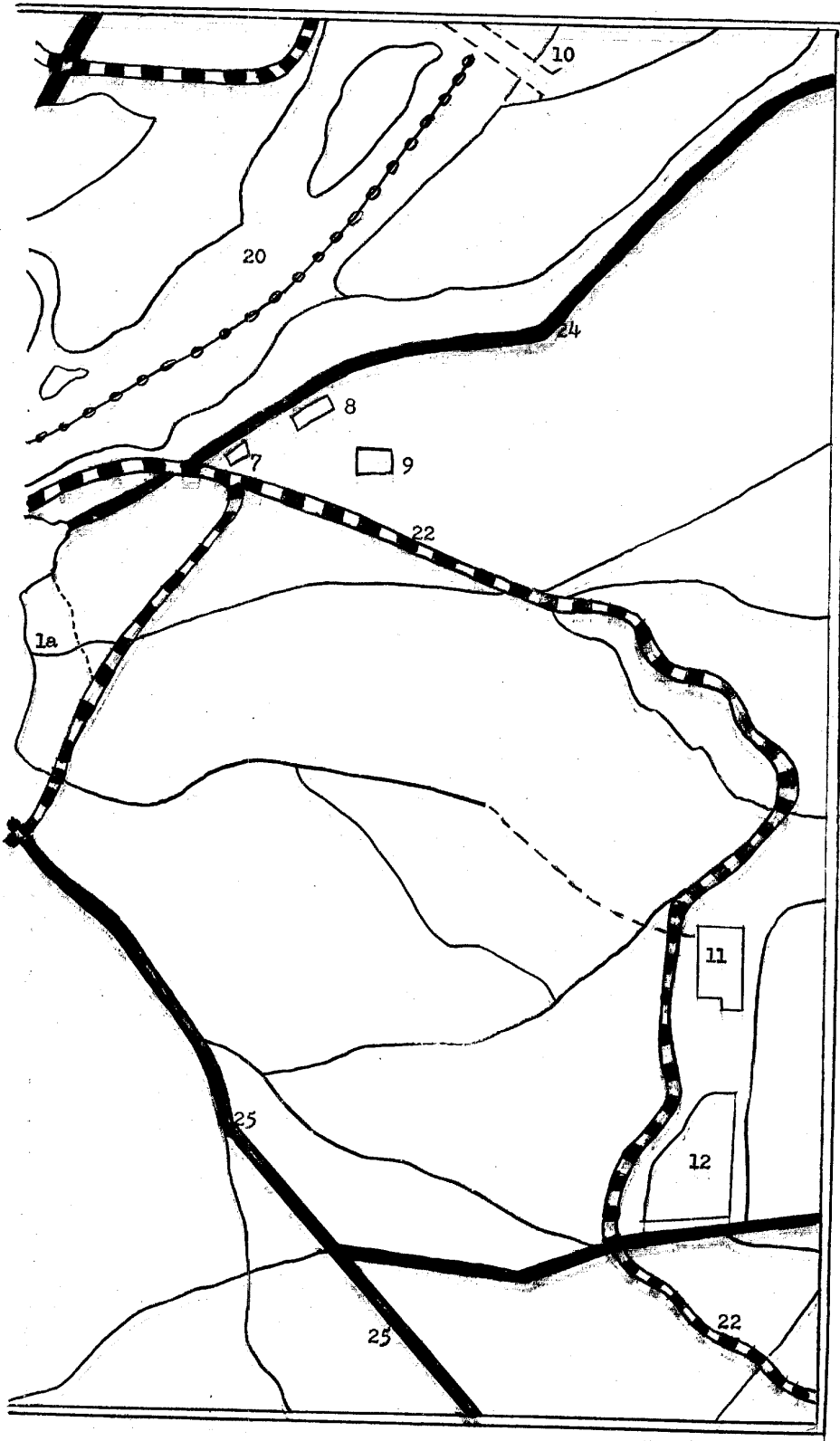
RUSE and its Environs (Scale: 1:25,000)



SECRET/CONTROL - U.S. OFFICIALS ONLY

SECRET/CONTROL - U.S. OFFICIALS ONLY

-3-



SECRET/CONTROL - U.S. OFFICIALS ONLY