

25X1

CLASSIFICATION CONFIDENTIAL
CENTRAL INTELLIGENCE AGENCY
INFORMATION REPORT

COUNTRY USSR
SUBJECT Ordshonikidze and Gorlovka

DATE DISTR. / 8 Mar 1954

NO. OF PAGES 1

PLACE ACQUIRED

NO. OF ENCLS. 2
(LISTED BELOW)

DATE ACQUIRED

SUPPLEMENT TO REPORT NO.

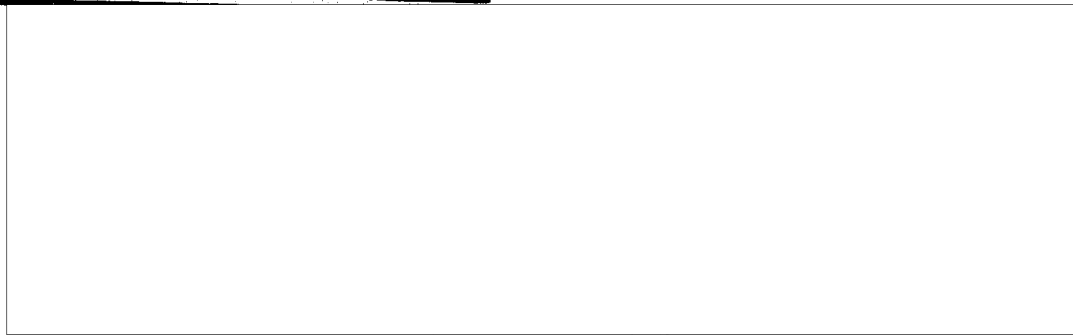
DATE OF INFORMATION

25X1

25X1

THIS DOCUMENT CONTAINS INFORMATION AFFECTING THE NATIONAL DEFENSE OF THE UNITED STATES: WITHIN THE MEANING OF TITLE 18, SECTIONS 793 AND 794, OF THE U.S. CODE; AS AUTHORIZED: ITS TRANSMISSION OR REVELATION OF ITS CONTENTS TO AN UNAUTHORIZED PERSON IS PROHIBITED BY LAW. THE REPRODUCTION OF THIS PAGE IS PROHIBITED.

THIS IS UNEVALUATED INFORMATION



1. [redacted] sketch of Ordshonikidze [See Enclosure (A)] to which the following legend applies: (The location of the buildings on the sketch are correct. The distances between them are approximate.)

Legend

- | | |
|---|--|
| 1. Staff Dept of Trade | 19. Militia stations |
| 2. Shooting range | 20. Jail |
| 3. Courts | 21. Veterinary assistance |
| 4. Printing house | 22. Factory work shop school |
| 5. Executive Committee | 23. Worker's University |
| 6. Cinema & Welfare Office | 24. Milk Trust |
| 7. Drug store | 25. High School |
| 8. Land Board | 26. Hdqrs - former cooperatives |
| 9. Public bathhouse | 27. Worker and Peasant Inspection |
| 10. Food office | 28. Post office |
| 11. City registration office (vital statistics) | 29. Polyclinic |
| 12. Public Nutrition Dept | 30. Radio station |
| 13. Tax Collector's office | 31. Military Registration Office |
| 14. Orthodox Church | 32. Monument |
| 15. City Hall | 33. Handcraftsmen Association |
| 16. MVD | 34. Dramatic theater |
| 17. District Party Committee | 35. Hotel; A. Market place; B. Hay market place; C. Football field (soccer). |
| 18. Circus Arena | 36. Airclub (form. Synagogue). |

25X1

2. [redacted] sketch of Gorlovka [See Enclosure (B)] showing the locations of points of interest:

25X1

- end -

ENCLOSURE (A): Sketch of Ordshonikidze Showing Locations of Points of Interest
(B): Sketch of Gorlovka with Legend

CLASSIFICATION CONFIDENTIAL

521.43

127N

621.43

324N

DISTRIBUTION																			

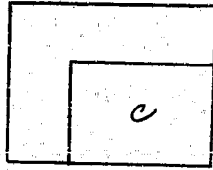
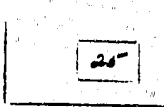
25X1

25X1

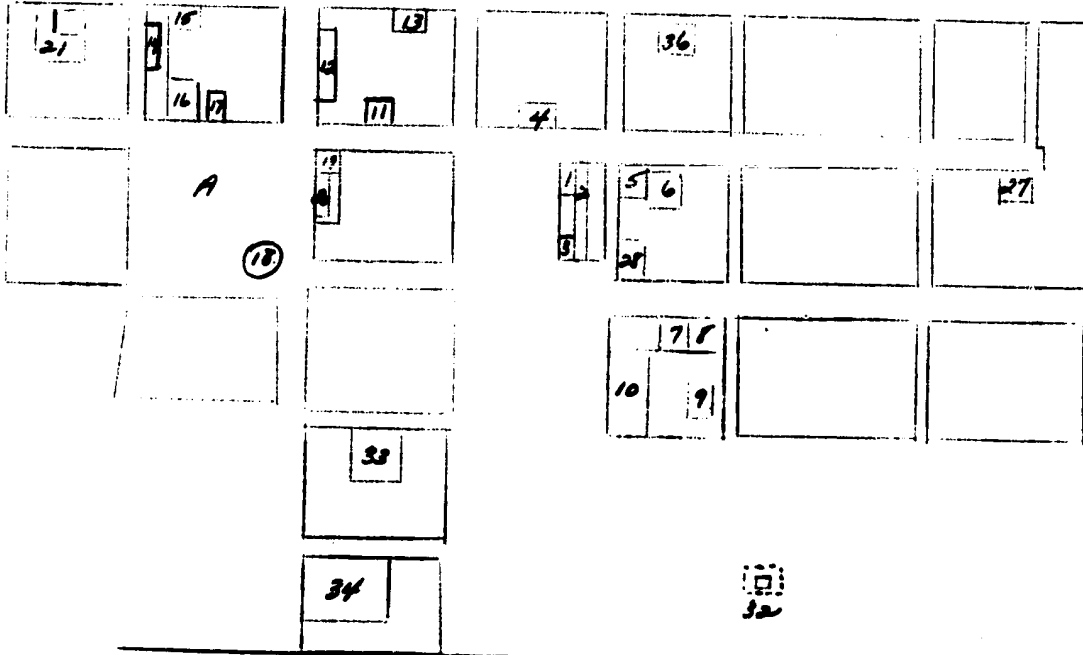
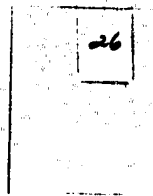
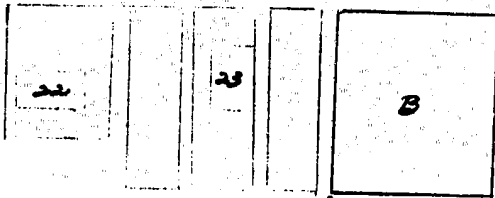
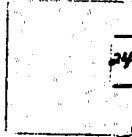
CONFIDENTIAL



ENCLOSURE A



Approximate Scale
1" = 100 meters



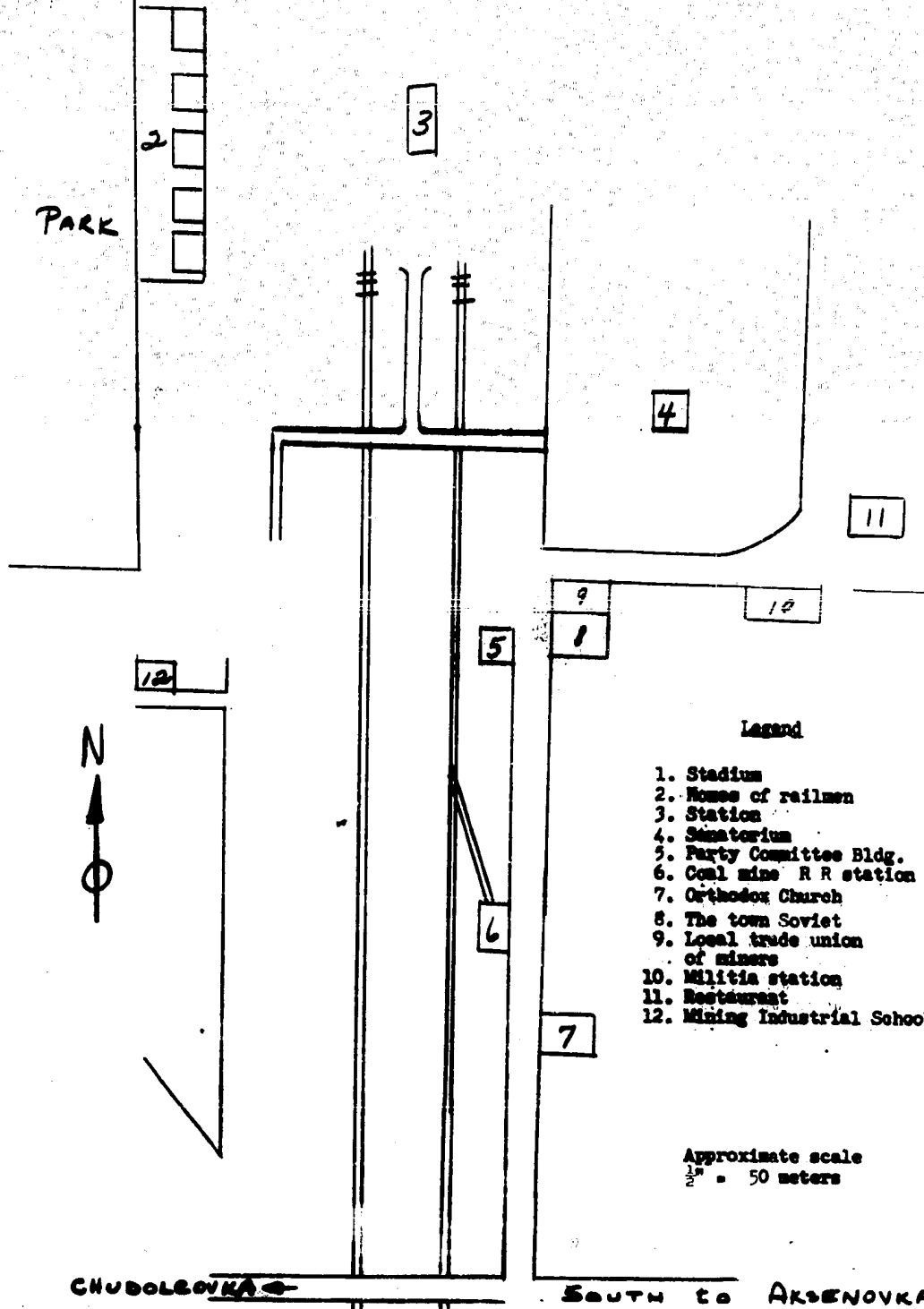
Sketch of ENCLOSURES

CONFIDENTIAL

ENCLOSURE (B)

CONFIDENTIAL

SKETCH OF GORLOVKA



Legend

- 1. Stadium
- 2. Homes of railmen
- 3. Station
- 4. Sanatorium
- 5. Party Committee Bldg.
- 6. Coal mine R R station
- 7. Orthodox Church
- 8. The town Soviet
- 9. Local trade union of miners
- 10. Militia station
- 11. Restaurant
- 12. Mining Industrial School

Approximate scale
1/2" = 50 meters

CHUDOLEVKA ←

→ SOUTH TO AKSENOVKA

CONFIDENTIAL