

~~CONFIDENTIAL~~

25X1

<b>PRESENTATION FORM FOR GRAPHIC MATERIAL</b>		DATE
(Submit <input type="checkbox"/> in triplicate with process sheet attached)		14 February 1956
DIST: <input type="checkbox"/> ORIG-GRAPHICS; <input type="checkbox"/> DUPL-CASE FILE; <input type="checkbox"/> TRIPL-SOURCE FILE; <input type="checkbox"/> QUAD-FO RECORD		<input type="checkbox"/> GIFT <input checked="" type="checkbox"/> LOAN
AREA Thailand		
SUBJECT Kodachrome Transparencies of Bangkok and Vicinity		
NUMBER OF ITEMS AND CATEGORY (Still photographs, negatives, or slides) <input type="checkbox"/>		
CHECK CLASSIFICATION OF PHOTOGRAPHS WHEN SEPARATED FROM THIS FORM. (The classification need not be the same.)		
<input type="checkbox"/> CONFIDENTIAL		<input type="checkbox"/> RESTRICTED <input checked="" type="checkbox"/> UNCLASSIFIED
		<input type="checkbox"/> SECRET
		Yes <input type="checkbox"/> No <input type="checkbox"/> <input checked="" type="checkbox"/> Yes <input type="checkbox"/> No
<b>DESCRIPTION OF MATERIAL</b>		
See attached lists. On loan. To be returned on or about 16 Mar 56.		
<b>FOR HEADQUARTERS USE ONLY</b>		
	DATE FORWARDED TO GR BY GMP	17 February 56
GR CONTROL NO.	RETURN DEADLINE (IF LOAN)	17 March 56
NITRATE FILM EXPLOSIVE-SHIP BY EXPRESS UNDER SPECIAL CARRIER REGULATIONS		

25X1

25X1

25X1

25X1

25X1

~~CONFIDENTIAL~~

CONFIDENTIAL

KODACHROMES

25X1

File No. 1, Bangkok

Photo #5 Moving picture house.

" #7 View of Rajadamern Avenue taken in the afternoon looking south. This road runs between king's palace and parliament and is a copy of Champs d'Eysses (Paris). Business buildings can be seen and to the left of center is the old city wall. The direction of the photo is: from the river toward the business section of the city.

" #8 State cooperative store. Local merchants sell their products at what they consider to be a fair price. Anyone can sell higher or lower but the people know they can get a fair price at the government cooperative store. Photo taken in the afternoon.

" #9 Typical stretch of middle-class Bangkok native houses bordering canal. Each one has its own bridge and farms. Photo taken in the afternoon looking north about two miles from the center of the city.

25X1

" #10 Typical street scene showing Buddhist priests in orange with begging bags, student in the center looking at the priests, and two policemen to the left of center. Cart is an ambulating restaurant. Monument to Democracy can be seen in background. Taken same time of day looking south.

" #11 Newer side of Rajadamern Avenue. Thais had hoped this street would become the business center, but the people are not used to this idea so it is not getting the business. It is afternoon and street is practically desolate. People still prefer to buy in a hand-to-mouth manner using shopping bags.

25X1

#12 Chinese merchants' street on their only one-day holiday (New Year's Day) looking south toward the Giant Swing (Hindu religion).

#15 View of portion of Thai navy and navy yard. Chao Menon Phya River looking north. It's about 15 miles above the river bar.

" #18 Building showing government information center on right. In foreground typical vegetable washing by natives in canal prior to selling them in the market. About 1 P.M.

" #19 View of a floating fruit market taken in the A.M. from the land side.

" #21 Same as Photo #12, a market street.

" #24 Typical Thai (flee) market.

CONFIDENTIAL

CONFIDENTIAL

- 2 -

File No. 1 (Continued)

- Photo #35 Typical Thai wealthy house showing open area below, living quarters on first floor, and top floor only for ventilation and coolness. House is surrounded by sapling bamboo poles and is situated about five miles from the center of town.
- #36 Typical upper or middle-class house about five miles from the center of town. Lawn in right-hand corner shows water-catching trough piped from home. Note two-car garage. No glass or screen used in most Thai houses.

25X1 File No. 2, Bangkok

- Photo #2 Junction of new road (to the right) and main Chinese section street. Taken about midday.
- #4 One of 300 or 400 hydrants in downtown section of Bangkok from which house water is taken. Picture shows woman employed as water bearer for three or four cents per can. This supplements the frequent use of canal water for household purposes. Streets are paved with curbing. Curbs and undersurface drains are becoming more common. Pressure of hydrants is fairly substantial. Alluvial plain is sour because salt water can back into it. Artesian wells are found here. A better grade of water can be found 300 or 400 feet below the surface of the earth.
- #10 Chinese gold shop in rear. At front can be seen Thai vegetable and fruit stands. Note filth on streets.
- #13 Shop beggar on street. In all only about 12 or 13 of these shop beggars were seen in Thai during my eight months' stay there.
- #14 Poor section market area. This is a very typical scene and miles of the same can be seen throughout the city. It serves the poor people. Notice filth around the stands and street.
- #15 Typical scene of filth seen for miles along the Bangkok canal. This photo was taken in the downtown section of the city and the native homes can be seen.
- #17 Additional filth in canal showing typical native construction about one mile north of the Golden Mount. Picture was taken in the afternoon.
- #23 Dry goods (flee) market in Thai.

CIA 202 704

CONFIDENTIAL

CONFIDENTIAL

File No. 2 (Continued)

Photo #30 Warm afternoon view of market place with sidewalk restaurant.

25X1

File No. 3, Bangkok

Photo #9

25X1

Group of Chinese squatter homes in the middle of the campus of the University of Chula Longkorn. The government has been unable to force them to move. This is just a source of pollution and an eyesore right in the middle of this really remarkable campus.

#10

King presenting a degree to a student from Thammasat. Priests in rear with orange robes and two cabinet ministers in front. Student is bowing as he takes degree. King is in the doctor's robe.

#11

25X1

Same city wall seen before outside moving picture house looking toward Golden Mount. This is mid-Rajadamern Avenue.

25X1

File No. 5, Bangkok

Photo #1

Canal section on river opposite from Bangkok going into jungle. This is an early morning picture looking west. Note the intersection of two canals, telephone lines, and typical crossroads store.

#3

Typical wharf scene on canal with typical vessels. Start of jungle in upper right-hand corner. Boat with canopy is either a taxi or ferry.

#4

Typical floating market scene at edge of jungle on canal.

#5

School river bus.

#6

Another canal waterfront scene showing freight and passenger boat from interior and also showing thatched roof broken. This is typical of roof construction. Modern roof construction in Thai follows sectional lines.

#8

25X1





Early morning going north on west side of river showing jungle cut by canal.

CONFIDENTIAL

CONFIDENTIAL

- 4 -

File No. 5 (Continued)

- Photo #11 Typical native house on bank of canal. Teak piling, thatched roof, flower garden and wharf can be seen.
- #12 Another typical house showing increased use of corrugated tin siding. Source of tin probably Japan. Natives on boat are bartering for goods which is customary marketing procedure. Little if any money is ever used. This is typical of interior Thai.
- 25X1  #14 Typical native rice boat showing family quarters at rear. Note helmsman on shelf. Note also corrugated top to rice boat. Corrugated tin also used for roofing.
- #16 Typical jungle clearing along side of canal or river to be used for truck garden products, e.g. carrots, sweet potatoes, cabbages, as well as bananas and coconuts.
- #18 Additional view of canal within Bangkok city limits. Note grade of bank; roads on both sides of canal. City canal maximum depth eight feet gradually decreasing as time extends after dredging.
- #21 Floating fruit market within Bangkok.
- #28 One hundred miles north and slightly east above Bangkok. Boats bring wood and rice down to Bangkok. It is an overnight or a full-day's trip. This waterway is a river.
- #29 River scene north of Sara Buri showing the typical river craft with wooded high banks.
- 25X1  #30 Typical farmhouse in rice paddy about 50 to 60 miles southeast of Bangkok showing fishing nets lowered and raised. Photo taken in December 1954. Taken about midday.
- 25X1  #31 Scene of farmer taking rice to government rice monopoly mill. Rice farmer's home in rear.
- 25X1  #32 Scene about 100 miles north of Bangkok showing river loading of charcoal wood for transportation to city. Twenty-five foot bank near Sara Buri. Photo taken from a bridge.
- #34 Picture of a bullock cart used everywhere in Thai. Width of wheel and height of axle are to provide passage during monsoon period. Near Sara Buri.
- #35 View of mountains to the northeast of Bangkok near Sara Buri (possibly below it because of river). Shows the end of the alluvial plain of which Bangkok is center. Not much vegetation.

CONFIDENTIAL

CONFIDENTIAL

File No. 5 (Continued)

Photo #35 (Continued) Very dry. Menon Chao Phya River is on near side of mountain; Mekhong River on other side as seen in photo.

25X1 File No. 6, Bangkok [redacted]

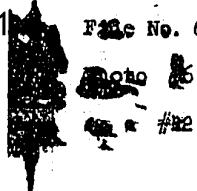


Photo #5 Typical retail shop on bank of canal or river.

Photo #12 Scene showing typical canal scene with wooden sidewalk and typical construction illustrating additional use of corrugated tin. This characterizes way of life for perhaps one out of every four persons in Bangkok.

25X1 [redacted] #14 Government rice monopoly mill a few miles northeast of Bangkok.

#15 Rice godown in conjunction with government ricemill.

25X1 [redacted] #16 Typical river bank settlement in vicinity of Bangkok.

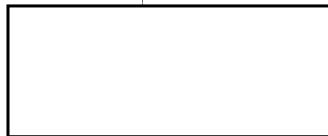
#22 Photo showing multi-purpose use of canal. Note bathing, washing, and large jugs to catch rainwater.

#23 Typical canal scene within four to five miles of Bangkok. Note dense undergrowth on canal to edge.

#25 Another shop. Photo shows broken roof of corrugated tin construction.

#31 Bangkok--foot bridge about 200 yards from river over canal within middle-class native area.

25X1



CONFIDENTIAL

FUNERAL AT TONG MEE HUI VILLAGE.  
CONFIDENTIAL



25X1



CHINA KWANGTUNG KIAI-P'ING DISTRICT 22 28 N 112 33 E  
FUNERAL AT TONG MEE HUI VILLAGE.  
CONFIDENTIAL



25X1



CHINA KWANGTUNG KIAI-P'ING DISTRICT 22 28 N 112 33 E  
FUNERAL AT TONG MEE HUI VILLAGE.  
CONFIDENTIAL



25X1



25X1



25X1

CHINA KWANGTUNG HAI-PING DISTRICT 22 28 N 112 33 E  
 CORPSE READY FOR BURIAL AT TONG MEE HUI VILLAGE.  
 CONFIDENTIAL

25X1  
25X1



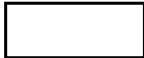
CHINA KWANGTUNG HAI-PING DISTRICT 22 28 N 112 33 E  
 FUNERAL AT TONG MEE HUI VILLAGE.  
 CONFIDENTIAL

25X1





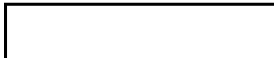
CHINA KWANGTUNG KAI-PING DISTRICT 22 28 N 112 33 E  
FUNERAL IN HILLS NEAR TONG MEE HUI VILLAGE.  
CONFIDENTIAL



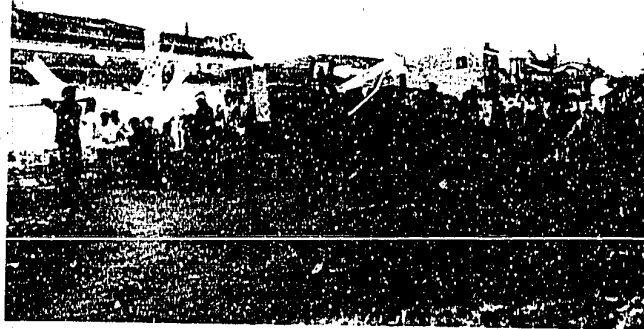
25X1



CHINA KWANGTUNG KAI-PING DISTRICT 22 28 N 112 33 E  
FUNERAL AT TONG MEE HUI VILLAGE.  
CONFIDENTIAL



25X1



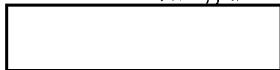
CHINA KWANGTUNG KAI-PING DISTRICT 22 28 N 112 33 E  
FUNERAL AT TONG MEE HUI VILLAGE.  
CONFIDENTIAL



25X1



CHINA KWANGTUNG KAI-PING DISTRICT 22 26 N 112 34 E  
FUNERAL AT TONG MEE HUI VILLAGE.  
CONFIDENTIAL



25X1

