

U.S. Officials Only  
CONFIDENTIAL

CENTRAL INTELLIGENCE AGENCY  
**INFORMATION REPORT**

25X1A

COUNTRY Czechoslovakia

SUBJECT Chronotechna Plant, Jablonec nad Nisou: Location/  
Production/Raw Materials/Personnel/Layout Plans

PLACE ACQUIRED  
(BY SOURCE)



25X1A

DATE ACQUIRED  
(BY SOURCE)

DATE (OF INF

RESPONSIVE TO	
1	2
CD NO.	
OO/C NO.	
ORR NO.	
OAS NO.	
OCI NO.	

DATE DISTR. 26 Feb 1954

NO. OF PAGES 3

NO. OF ENCLS. 4

SUPP. TO  
REPORT NO.

THIS DOCUMENT CONTAINS INFORMATION AFFECTING THE NATIONAL DEFENSE OF THE UNITED STATES, WITHIN THE MEANING OF TITLE 18, SECTIONS 793 AND 794, OF THE U.S. CODE, AS AMENDED. ITS TRANSMISSION OR REVELATION OF ITS CONTENTS TO OR RECEIPT BY AN UNAUTHORIZED PERSON IS PROHIBITED BY LAW. THE REPRODUCTION OF THIS REPORT IS PROHIBITED.

25X1X

THIS IS UNEVALUATED INFORMATION



Name

- 2. "The Chronotechna national enterprise in Jablonec nad Nisou used to be called Doba. It is expected that the name will be changed again to Elektrocas.

Location

- 3. "The plant is situated at the corner of Gottwald and Novoveska Streets, about 30 meters west of the Starokatolicky hostel (the old Catholic Church). To the north and west of the plant are streets of the town. To the west are barracks. To the south are gardens.

- 4. "The plant was not damaged during World War II. It was scheduled for enlargement during 1953. A new section was to be built in the yard of the plant.

Management

- 5. "The director of Chronotechna is (fnu) Pesek. The deputy director is (fnu) Janda. The production chief is (fnu) Hruby. The chief of the technical offices is (fnu) Papiorek.

Labor

- 6. "The plant has 140 employees, of whom 80% are women.

SEE LAST PAGE FOR SUBJECT & AREA CODES

U.S. Officials Only  
CONFIDENTIAL

DISTRIBUTION	STATE	ARMY	NAVY	AIR	FBI	ORR EV			
--------------	-------	------	------	-----	-----	--------	--	--	--

This report is for the use within the USA of the Intelligence components of the Departments or Agencies indicated above. It is not to be transmitted overseas without the concurrence of the originating office through the Assistant Director of the Office of Collection and Dissemination, CIA.

CONFIDENTIAL/US OFFICIALS ONLY

-2-

7. "The monthly salaries in the old currency prior to 30 May 53 were 3500 - 4000 Kcs. The salaries of the persons in 'accord' [sic] work were 6000 - 8000 Kcs. per month. There was one Stakhanovite worker (fnu) Rehak.
8. "Most of the factory officers and workers live in the town or neighborhood of Jablonec nad Nisou. They eat their meals in the canteen of the power plants of Jablonec nad Nisou. The food there is good.

Production

9. "Following is Chronotechna's average monthly production:

<u>Item</u>	<u>Type</u>	<u>Number</u>
Electric chronometers ( 'casomeric' <u>[sic]</u> )	SH 1	800 - 1000
Kitchen clocks	H 4	500
Hall clocks	H 4	300
Alarm clocks	N 60	2000
Spring alarm clocks	H 1	1000
Spring gramophones	MGS 1	500

10. "I know that Chronotechna also produces time mechanisms for army ammunition, but I do not know the rate.
11. "The plant fulfilled 75% of the quota set for 1952 under the Five-Year Economic Plan. SECRET

Raw Materials

12. "The plant has no trouble in getting supplies of raw materials from Czechoslovak metal factories.
13. "A great deal of the raw material delivered by the Czechoslovak nationalized iron works was badly stored and rusted. The spare parts manufactured from this rusted material could not be used.

Equipment

14. "All the machines in the plant are clean and in good condition. The technical personnel are not, however, qualified to handle the more complicated machines.

Distribution

15. "The clocks of all types are sold and shipped to the Chronor firm in Prague, the Chronor firm in Brno and the Chronor firm in Bratislava.
16. "The gramophones are sold through some Slovak firm to Communist China.

Power

17. "The plant is supplied with electric power by the power plants in Jablonec nad Nisou. It receives three types of electric power: 360 V, 220 V and 150 V.

Security

18. "The plant has a militia consisting of six persons. The gatekeeper is armed with a pistol.
19. "The working morale is very bad. This is mostly due to the low salaries.

CONFIDENTIAL/US OFFICIALS ONLY

CONFIDENTIAL/US OFFICIALS ONLY

25X1A

-3-

20. "Most of the sabotage occurs in the section where the finished electric clocks are inspected. The electrical wire to this section has been cut many times. That delays the whole production of the section for three or four days because the clocks must be examined again right from the start.

Communism

22. "The plant in 1952 had only one dangerous CP member, (fnu) Burianek, the chief of the plant militia. He was an STB informer.

Brigade Work

23. "In autumn 1952 all the plant workers were ordered into the fields in voluntary brigades to cut the sugar beet crop.

- end -

- ENCLOSURE (A): Diagram of the Layout of the Chronotechna Plant in Jablonec nad Nisou
- (B): Two-part Diagram of the Layout of the Ground Floor of the Chronotechna Plant, Jablonec nad Nisou with Legend
- (C): Diagram of the Layout of the First Floor of the Chronotechna Plant with Legend
- (D): Diagram of the Layout of the Second Floor of the Chronotechna Plant with Legend

CONFIDENTIAL/US OFFICIALS ONLY

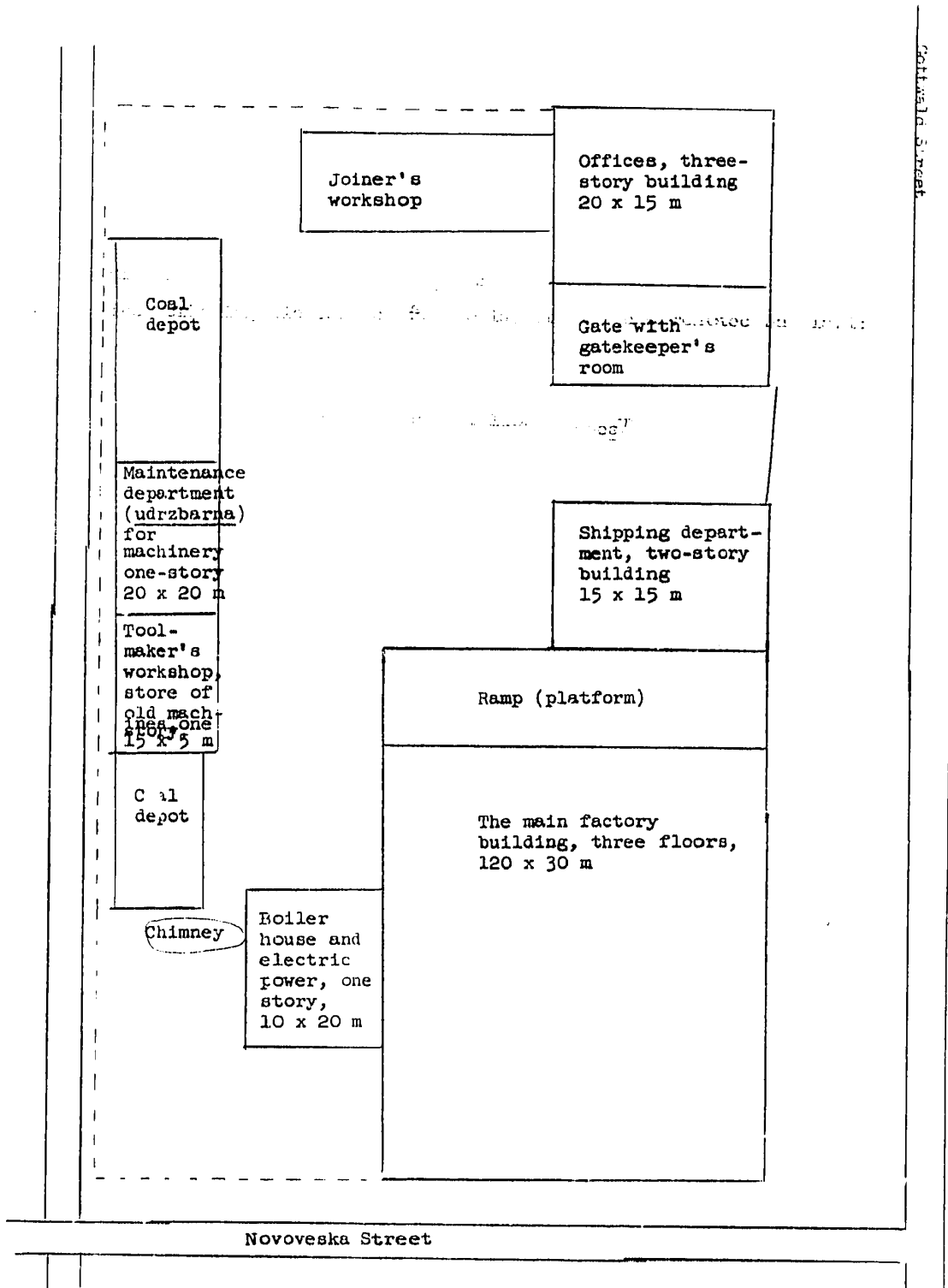
ENCLOSURE (A)

CONFIDENTIAL/US OFFICIALS ONLY



I - Chronotechna, Jablonec nad Nisou

Layout of Plant



CONFIDENTIAL/US OFFICIALS ONLY

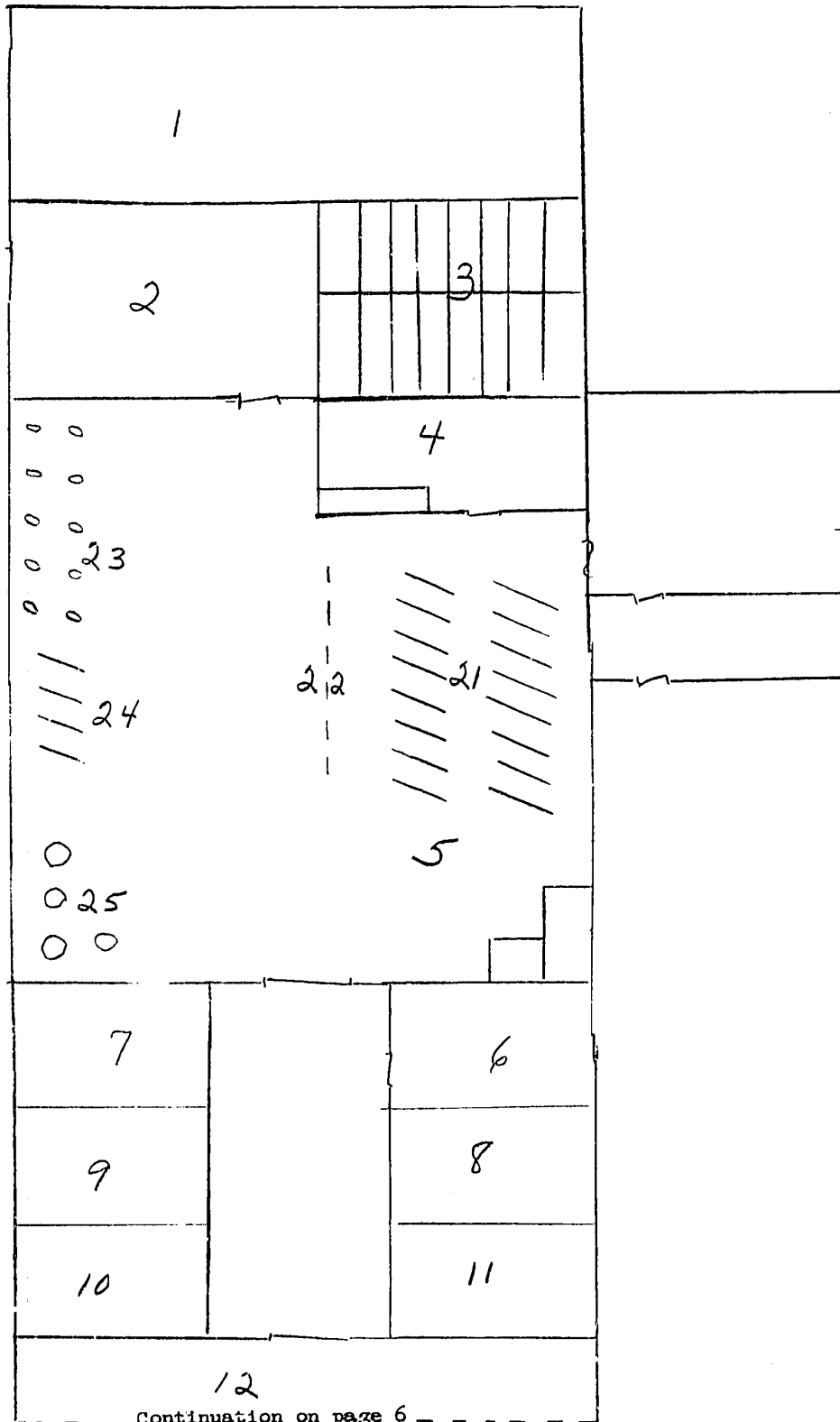
CONFIDENTIAL/US OFFICIALS ONLY

ENCLOSURE (B)  
Page -1-

II - Chronotechna, Jablonec nad Nisou

Layout of Ground Floor of Plant

Part 1



Continuation on page 6

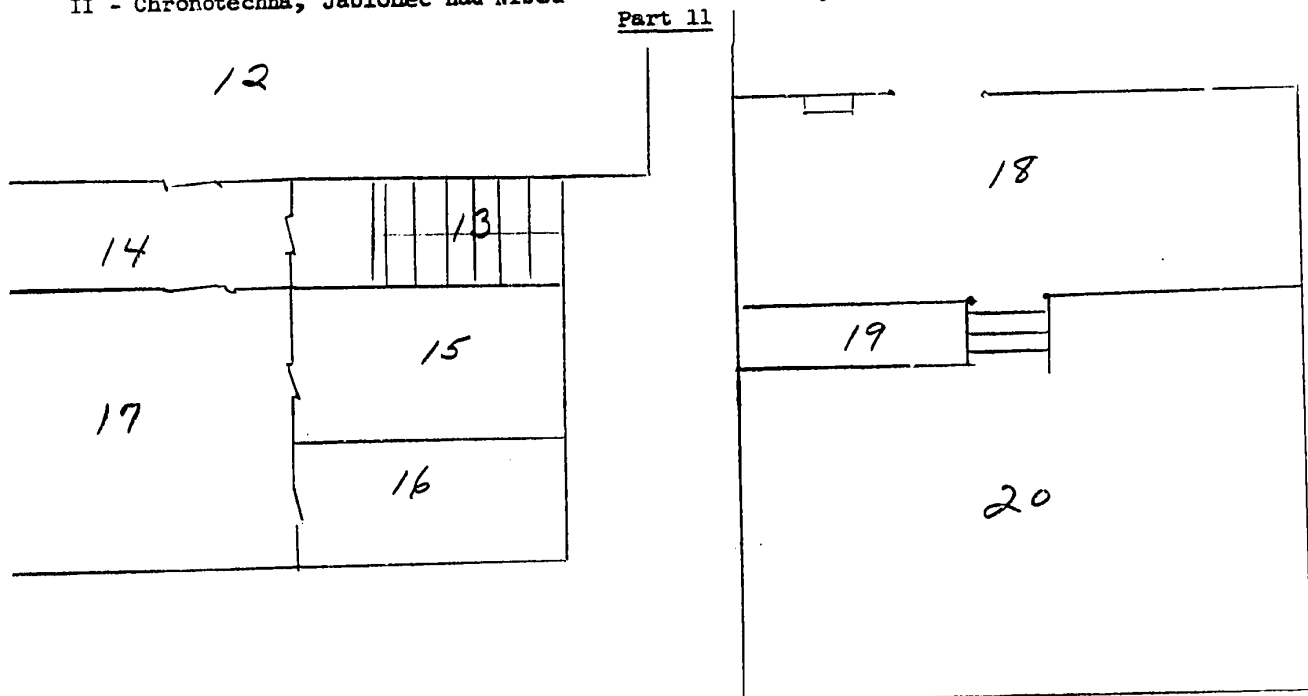
CONFIDENTIAL/US OFFICIALS ONLY

CONFIDENTIAL/US OFFICIALS ONLY

ENCLOSURE (B)  
Page -2-

II - Chronotechna, Jablonec nad Nisou

Layout of Ground Floor of Plant



Legend For Diagram II - Layout of The Ground Floor of Plant

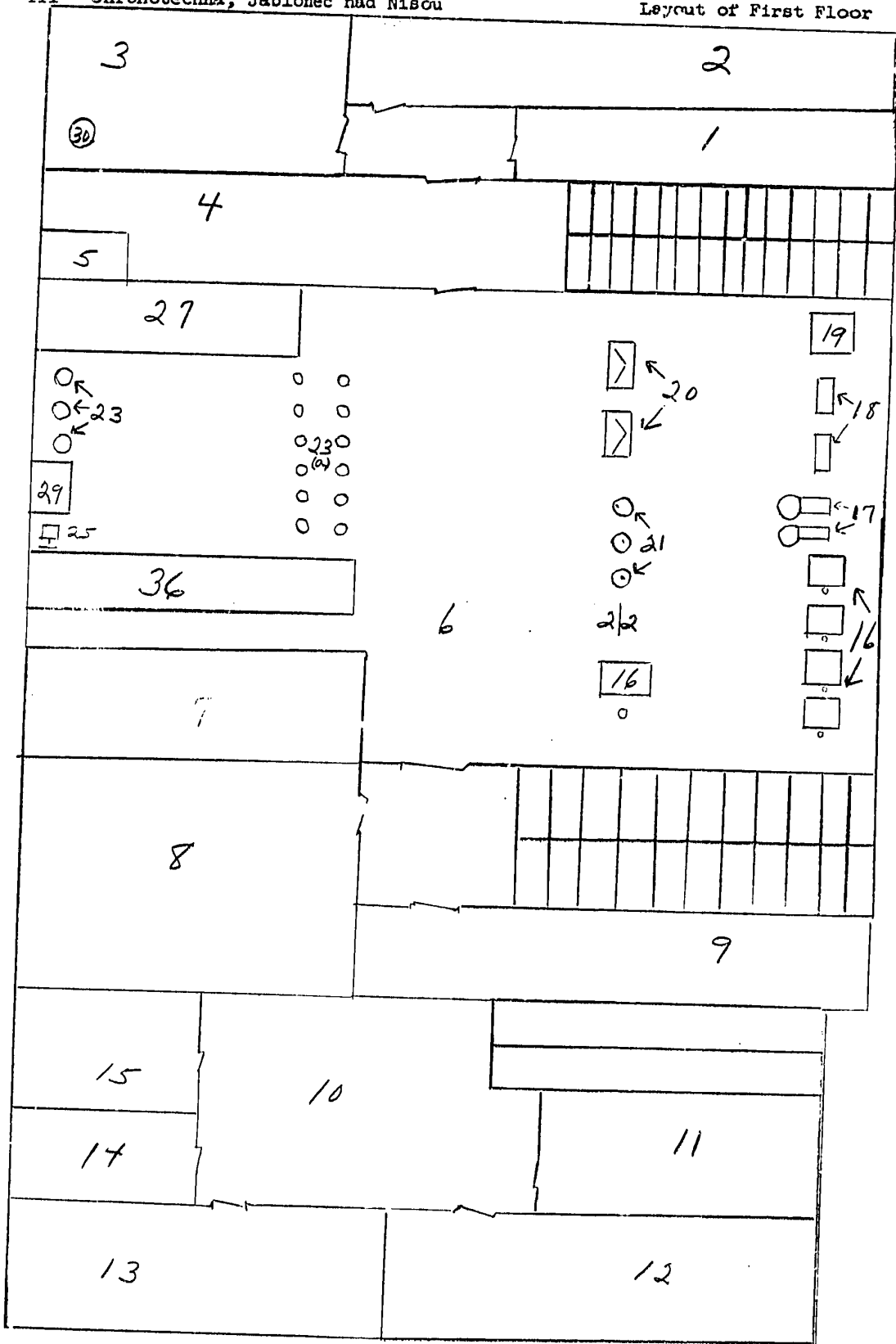
- 1) Material Warehouse
  - 2) Corridor
  - 3) Staircase
  - 4) Dressing room for car mechanical engineers
  - 5) Car engineers' workshop
  - 6) Depot of products from turners and frazers' workshop
  - 7) Depot of products from turners and frazers' workshop
  - 8) Staircase
  - 9) Office of the masters from the turners' and frazers' workshop
  - 10) Bookkeeping office
  - 11) WC
  - 12) Ramp
  - 13) Staircase
  - 14) Packing department
  - 15) Shipping department
  - 16) Warehouse of finished products
  - 17) Warehouse of finished products
  - 18) Passage
  - 19) Gatekeeper's room
  - 20) Offices
  - 21) Mechanical workshop equipped with 16 automatic turners (of this number three are of German production 11 years old, 12 are new Swiss turners, and one a completely new Skoda turner)
  - 22) Small frazers and turners
  - 23) Fully automatic Swiss frazers
  - 24) Four new German turners
  - 25) Presses (four)
- [some numbers of legend missing]

CONFIDENTIAL/US OFFICIALS ONLY



III - Chronotechna, Jablonec nad Nisou

Layout of First Floor



CONFIDENTIAL/US OFFICIALS ONLY

ENCLOSURE (C)  
Page -2-

Legend For Diagram III - Layout of First Floor [US Second Floor] of Plant

- 1) Warehouse of half-finished material
- 2) Warehouse for tools
- 3) Main production control
- 3a) A big Swiss microscope [not on diagram]
- 4) Corridor
- 5) Small blacksmith's workshop
- 6) Working hall
- 7) Bookkeeping office and the office of the department master
- 8) Issuing of tools and forms
- 9) WC
- 10) Corridor
- 11-15) Depot of products ready for shipment
- 16) Working tables
- 17) Planing benches
- 18) Turners
- 19) A big automatic grinding machine, grinding with precision of 1/10 mm
- 20) Varicus machines
- 21) Borers
- 22) Watchmaker's turner
- 23) Borers
- 23a) Handpresses
- 24) Working table [not on diagram]
- 25) Grinding machine
- 26) [not on diagram]
- 27) Working tables  
[no legend given for the 29, 30, 36 indicated on diagram]

CONFIDENTIAL/US OFFICIALS ONLY

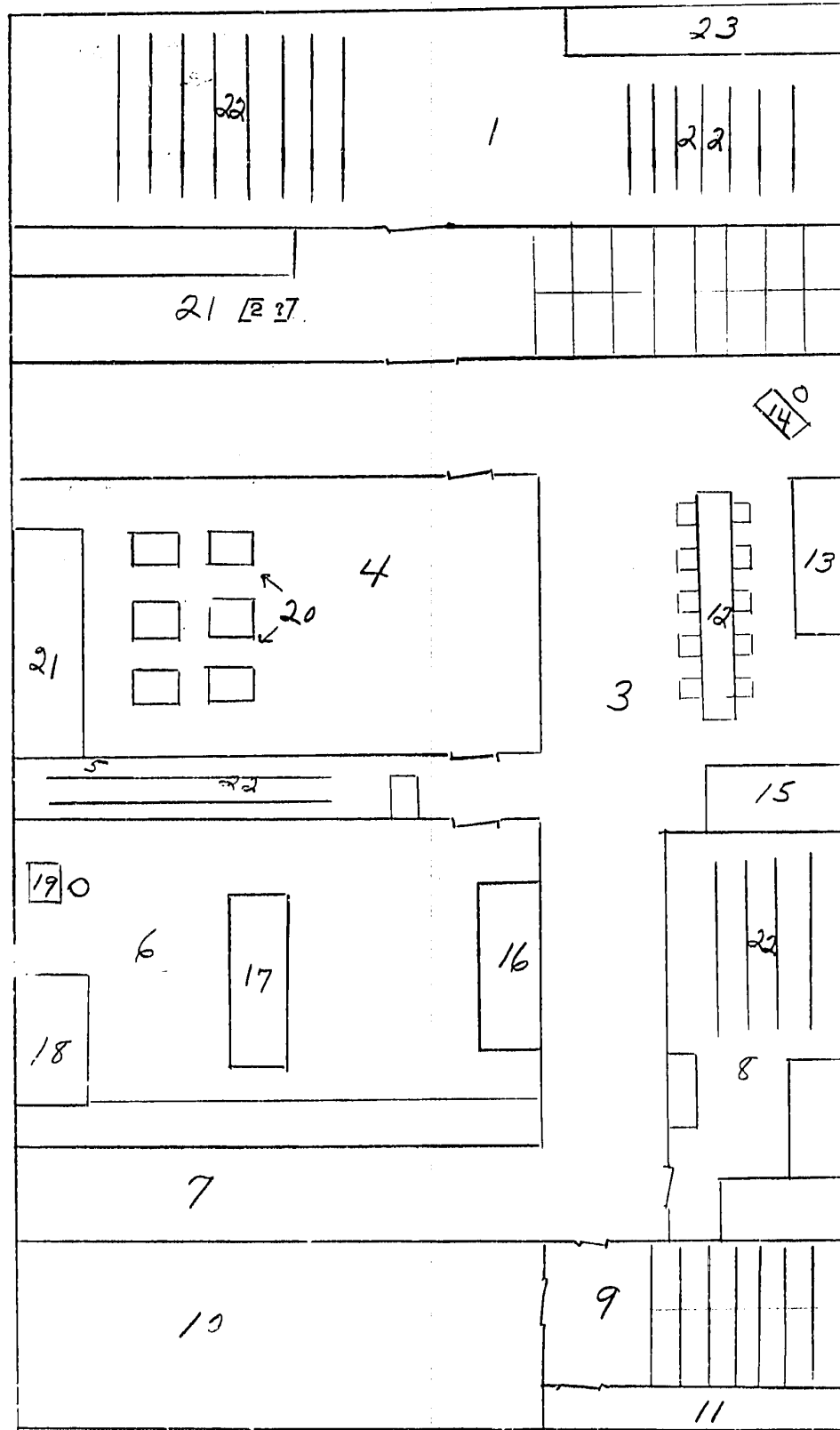


CONFIDENTIAL/US OFFICIALS ONLY

ENCLOSURE (D)  
Page -1-

IV - Chronotechna, Jablonec nad Nisou

Layout of Second Floor of Plant



CONFIDENTIAL/US OFFICIALS ONLY

CONFIDENTIAL/US OFFICIALS ONLY

25X1A

ENCLOSURE (D)  
Page -2-Legend For Diagram IV - Layout of Second Floor [US Third Floor]

- 1) Main 'regulation' [sic] room
- 2) Corridor [See bracketed note on diagram on page 2]
- 3) Working hall, final assembling
- 4) Working hall where the clocks are packed into boxes
- 5) Inspection and Regulation here are regulated the military spare parts for the use of Czechoslovak Army (casovaci strojky)
- 6) Depot of electric engines and spare parts for the engines
- 7) Dressing room
- 8) Regulation room
- 9) Corridor
- 10) Regulation and checking of gramophones
- 11) WC
- 12-15) Working tables
- 16-18) Bookshelves
- 19) Storekeepers room
- 20-21) Working tables
- 22) Regulation and checking of electric clocks - all clocks are checked 48 hours before they leave this room
- 23) Tables."

-end-

## LIBRARY SUBJECT &amp; AREA CODES

4/744.5	27M.
744.5	27M

CONFIDENTIAL/US OFFICIALS ONLY