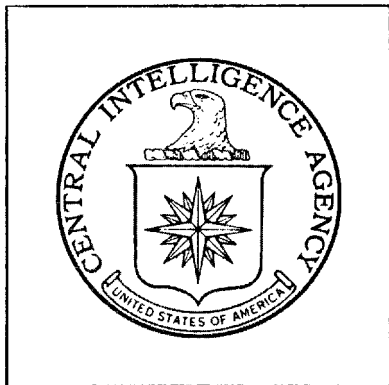


Top Secret

#5



**DIRECTORATE OF
INTELLIGENCE**

**Declass Review by
NIMA / DoD**

Imagery Analysis Report

Vladivostok Shipyard 202

Vladivostok, USSR



25X1

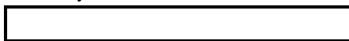


Top Secret

25X1

25X1

DDI/IAR 83088

 25X1

DATE June 1968

COPY 40

PAGES 12

Approved For Release 2004/01/16 : CIA-RDP79T00919A000200500001-5

25X1

Approved For Release 2004/01/16 : CIA-RDP79T00919A000200500001-5

25X1



Approved For Release 2004/04/16 : CIA-RDP79T00919A000200500001-5

~~TOP SECRET~~



June 1968

IMAGERY ANALYSIS SERVICE

25X1

25X1

VLADIVOSTOK SHIPYARD 202

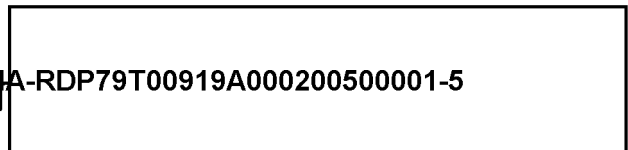
VLADIVOSTOK, USSR



25X1

Approved For Release 2004/04/16 : CIA-RDP79T00919A000200500001-5

~~TOP SECRET~~



25X1

25X1

Approved For Release 2004/01/16 : CIA-RDP79T00919A000200500001-5

25X1

IMAGERY ANALYSIS SERVICE



25X1

FIGURE 1. VLADIVOSTOK SHIPYARD 202,

25X1

Approved For Release 2004/01/16 : CIA-RDP79T00919A000200500001-5

TOP SECRET

25X1

25X1

[Redacted]

TOP SECRET

[Redacted]

25X1

25X1

IMAGERY ANALYSIS SERVICE

SHIPYARD : VLADIVOSTOK SHIPYARD 202
LOCATION : VLADIVOSTOK, USSR
GEO COORDS: 43-07N 131-55E

[Redacted]

25X1

KEY TO NUMBERED ANNOTATIONS ON FIGURE 2

1. Probable MIKHAIL KALININ or MIKHAIL URITSKIY Class Passenger Ship (LOA approximately 400 feet)

2. OMSK Class Merchant Ship (LOA approximately 510 feet)
This position was also occupied by an OMSK Class merchant ship

[Redacted]

25X1

25X1

3. Possible KRILON Class Passenger Ship (LOA approximately 390 feet)

[Redacted]

25X1

4. Probable MIKHAIL KALININ or MIKHAIL URITSKIY Class Passenger Ship (LOA approximately 400 feet)

5. Probable SKORYY Class DD (LOA approximately 395 feet)
It cannot be determined from this photography whether or not this vessel is [Redacted] SKORYY" Class DD. [Redacted]

25X1

25X1

25X1

6. Fourteen Probable "MP-4" Class LSV (LOA of each approximately 170 feet)

[Redacted]

25X1

7. Probable "MP-SMB 1" Class LCU (LOA approximately 160 feet)
This vessel was probably included in the fifteen probable landing craft observed at this position on coverage [Redacted]

25X1

25X1

8. Possible NENETS Class AO (LOA approximately 250 feet)

9. Six Unidentified Small Vessels (measurements undetermined)

25X1

10. INGUL Class ARC (LOA approximately 430 feet)

[Redacted]

25X1

11. Possible DOBRINYA NIKITICH Class AGBL (LOA approximately 220 feet)

TOP SECRET

[Redacted]

25X1

25X1

[Redacted]

Approved For Release 2004/01/16 : CIA-RDP79T00919A000200500001-5

~~TOP SECRET~~

[Redacted]

[Redacted]

25X1
25X1

IMAGERY ANALYSIS SERVICE

- 12. Two Possible "MP-4" Class LSV (LOA of each approximately 170 feet)
- 13. Probable BALKHASH and BAYKAL Hydrographic Survey Ships (LOA of each approximately 370 feet)

25X1

[Redacted]

- 14. Probable POLYARNIK AO (LOA approximately 420 feet)
- 15. Probable SKORYY Class DD (LOA approximately 395 feet)
It cannot be determined from this photograph whether or not this vessel is a "Modified SKORYY" Class DD.

25X1

[Redacted]

[Redacted]

25X1

- 16. Unidentified Merchant Ship (LOA approximately 330 feet)
- 17. Unidentified Possible Tug (LOA approximately 150 feet)
- 18. Approximately Ten Unidentified Small Vessels (measurements undetermined)
- 19. Numerous Unidentified Small Vessels (measurements undetermined)
- 20. Two Unidentified Vessels (LOA of each approximately 290 feet)
- 21. Numerous Unidentified Small Vessels (measurements undetermined)

KEY TO FACILITY ANNOTATION ON FIGURE 2

- A. Possible Collapsible POL Storage Tanks
These appear to be the same tanks which were observed

25X1

[Redacted]

[Redacted]

25X1

Approved For Release 2004/01/16 : CIA-RDP79T00919A000200500001-5

~~TOP SECRET~~

[Redacted]

25X1

IMAGERY ANALYSIS SERVICE

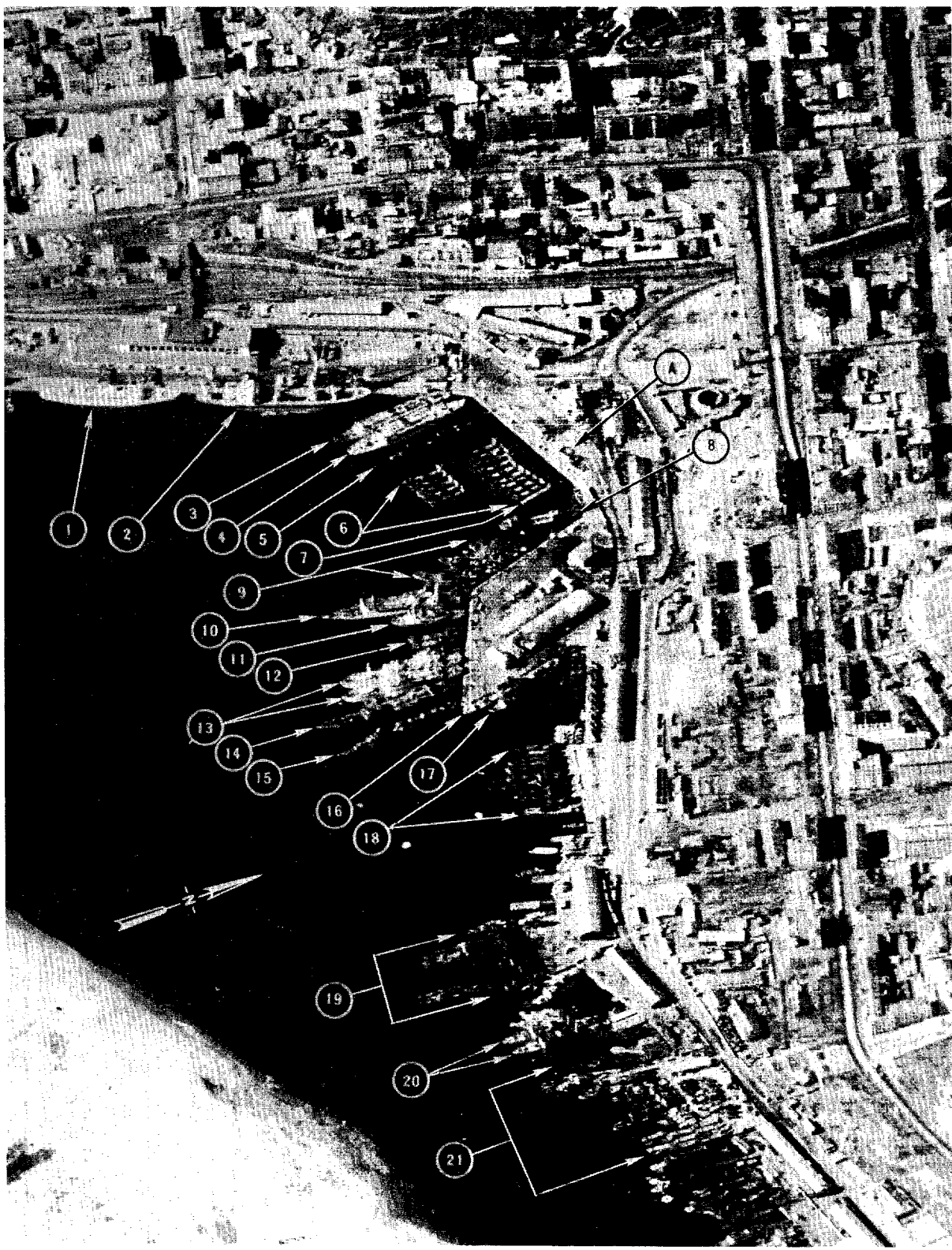


FIGURE 2. VLADIVOSTOK SHIPYARD 202.

25X1

[Redacted]

[Redacted]

25X1
25X1

IMAGERY ANALYSIS SERVICE

KEY TO NUMBERED ANNOTATIONS ON FIGURE 3

25X1

- 1. Probable YAGT (LOA approximately 230 feet)

[Redacted]

- 2. Numerous Unidentified Small Vessels (measurements undetermined)

- 3. Probable PAMIR Class ATR (LOA approximately 260 feet)

- 4. Six Probable Trawlers/AGIs (LOA of each approximately 160 feet)

- 5. Occupied Floating Dock (LOA approximately 430 feet)

This dock is occupied by three unidentified vessels, [Redacted]

[Redacted]

25X1
25X1

25X1
25X1

- 6. Six Probable Trawlers/AGIs (LOA of each approximately 130 feet)

- 7. Unidentified Small Vessel (measurements undetermined)

This vessel appears to be of the AKL/AGI type [Redacted]

[Redacted]

25X1

25X1

- 8. Approximately Six Unidentified Vessels (measurements undetermined)

- 9. Two Possible "W/R" Class SS (visible waterline length of each approximately 250 feet)

[Redacted]

25X1

- 10. "W-Conversion" Class (LONG BIN Type) SSG (visible waterline length approximately 270 feet)

[Redacted]

25X1

- 11. Possible "W/R" Class SS (visible waterline length approximately 250 feet)

- 12. Probable KRUPNYY Class DDGS (measurements undetermined)

Identification of this vessel is based on visible topside detail on

[Redacted]

25X1
25X1

25X1

- 13. Probable SKORYY Class DD (LOA approximately 400 feet)

[Redacted]

25X1

- 14. Probable PAMIR Class ATR (LOA approximately 260 feet)

25X1

[Redacted]

25X1

25X1

Approved For Release 2004/01/16 : CIA-RDP79T00919A000200500001-5

25X1
25X1

TOP SECRET

IMAGERY ANALYSIS SERVICE

- 15. Unidentified Vessel (LOA approximately 210 feet)
- 16. Graving Dock No. 1
This dock is occupied by a probable icebreaker and a possible "G"
Class SSE. The measurements of both are undetermined.
- 17. Probable KOTLIN Class DD(G) (LOA approximately 415 feet)
This vessel has been undergoing conversion from DD to DDG. Poor
imagery on this mission precludes any interpretation of the progress
made on the conversion.
- 18. Unidentified Probable DD (measurements undetermined)
- 19. Possible KOTLIN Class DD (LOA approximately 415 feet)

25X1
25X1

25X1
25X1

25X1

KEY TO FACILITY ANNOTATION ON FIGURE 3

ILLEGIB A.

25X1

25X1

25X1



FIGURE 3. VLADIVOSTOK SHIPYARD 202

25X1
25X1

25X1

25X1

25X1

Approved For Release 2004/01/16 : CIA-RDP79T00919A000200500001-5

IMAGERY ANALYSIS SERVICE

KEY TO NUMBERED ANNOTATIONS ON FIGURE 4

- 1. Probable SVERDLOV Class CL (LOA approximately 690 feet)
[Redacted]
- 2. Probable KYNDA Class CLGM (LOA approximately 470 feet)
This vessel was previously misidentified as a KASHIN Class DLG.
[Redacted]
- 3. Possible PETYA Class PCE (measurements undetermined)
- 4. Two Probable ANDREY ZAKHAROV Class Crab Factory Ships (LOA of each approximately 530 feet)
[Redacted]
- 5. Probable SOVETSKIY SOYUZ Passenger Ship (LOA approximately 670 feet)
On the last coverage this ship was observed at the commercial quay at the west end of the bay. [Redacted]
- 6. Unidentified Probable Passenger Vessel (LOA approximately 400 feet)
- 7. Three ANDREY ZAKHAROV Class Crab Factory Ships (LOA of each approximately 530 feet)
[Redacted]
- 8. Three SIBIR Class AGMs (LOA of each approximately 360 feet)
[Redacted]
- 9. Eighteen MIRNYY Class Whale Catchers (LOA of each approximately 210 feet)
[Redacted]
- 10. Unidentified Vessel (LOA approximately 390 feet)
[Redacted]
- 11. Unidentified Vessel (LOA approximately 310 feet)
[Redacted]
- 12. Unidentified Cargo Vessel (LOA approximately 300 feet)
- 13. Two Probable MIRNYY Class Whale Catchers (LOA of each approximately 210 feet)
- 14. Unidentified Vessel (LOA approximately 300 feet)

25X1

25X1

25X1

25X1

25X1

25X1

25X1

25X1

25X1

25X1

IMAGERY ANALYSIS SERVICE

15. Unidentified Cargo Vessel (LOA approximately 440 feet)
16. Two Unidentified Probable Submarines (measurements undetermined)
These probable submarines are berthed at a small pier which is normally used for the berthing of "W/R" Class SS. [redacted]
17. Two Probable "Modified Z" Class SSs (LOA of inboard SS - approximately 295 feet; LOA of outboard SS - approximately 305 feet)
The bulbous bows are plainly visible on both of these submarines. [redacted]
18. Two Probable "W/R" Class SSs (LOA of each approximately 250 feet)
[redacted]

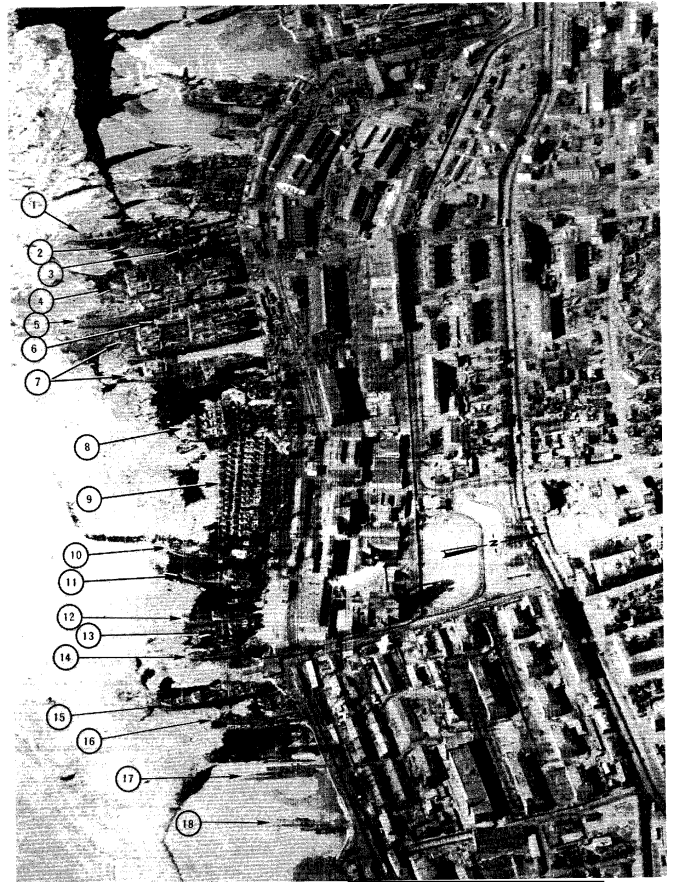


FIGURE 4. VLADIVOSTOK SHIPYARD 202. [redacted]

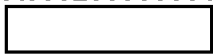
25X1

25X1



TOP SECRET

Approved For Release 2004/01/16 : CIA-RDP79T00919A000200500001-5



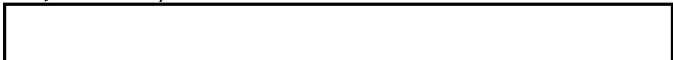
25X1

IMAGERY ANALYSIS SERVICE

KEY TO NUMBERED ANNOTATIONS ON FIGURE 5

- 1. Possible "L-III" Class OSS (LOA approximately 280 feet)
- 2. Possible UMBA Class Refrigerated Transport (LOA approximately 240 feet)
- 3. Probable PRUT Class ASR (LOA approximately 280 feet)
- 4. Unidentified Possible Cargo Ship (LOA approximately 360 feet)
- 5. Unidentified Possible Cargo Ship (LOA approximately 380 feet)
- 6. Probable New Class Auxiliary/Merchant Ship (LOA approximately 250 feet)
- 7. Probable AKTYUBINSK Class Refrigerated Transport (LOA approximately 420 feet)
- 8. Probable KAZBEK Class Tanker (LOA approximately 480 feet)
- 9. Two Probable MIRNYI Class Whale Catchers (LOA of each approximately 210 feet)
- 10. Hull Under Construction (visible length approximately 250 feet)
This hull which is on the outboard position of the side-launching way appears similar in size and configuration to the VALA Class ARR which was observed at the fitting-out quay
- 11. Unidentified Hull Under Construction (measurements undetermined)
This hull is on the inboard position of the side-launching way.
- 12. Unidentified Possible Cargo Vessel (LOA approximately 330 feet)
- 13. Probable MOSKVA Class AGB (LOA approximately 400 feet)
- 14. Possible RIGA Class DE in Graving Dock No. 2 (LOA approximately 300 feet)
This dock was occupied by two possible small vessels and a possible submarine on the previous coverage.

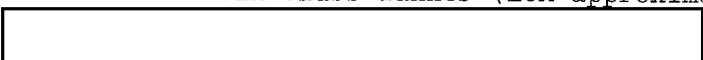
25X1



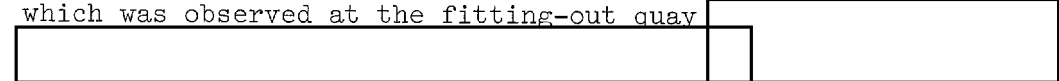
25X1



25X1

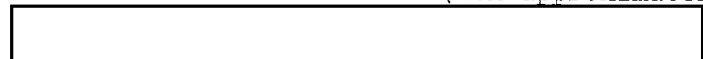


25X1



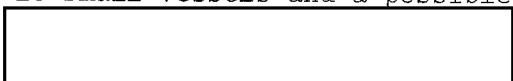
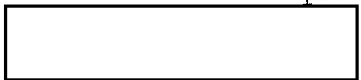
25X1

25X1



25X1

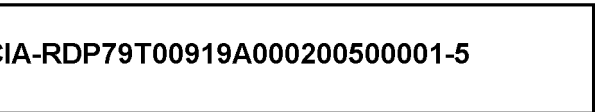
25X1



25X1

25X1

TOP SECRET



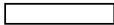
25X1

25X1

25X1



TOP SECRET



25X1

IMAGERY ANALYSIS SERVICE

15. Probable ANDREY ZAKHAROV Class Crab Factory Ship in Graving Dock No. 3 (LOA approximately 530 feet)

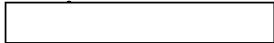
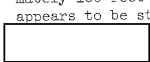


25X1

16. Two Probable MIRNY Class Whale Catchers in Graving Dock No. 3 (LOA of each approximately 210 feet)

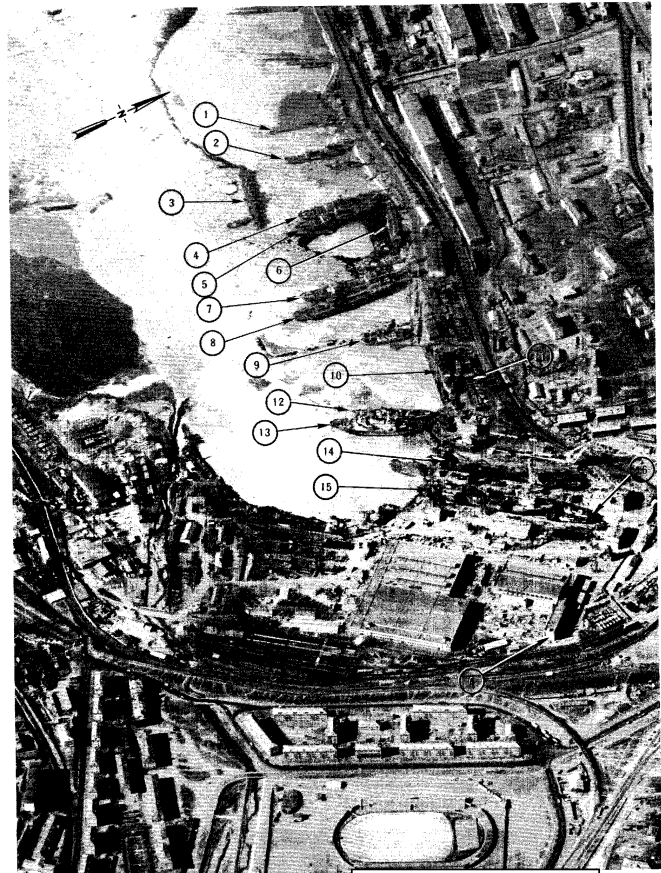
KEY TO FACILITY ANNOTATION ON FIGURE 5

A. Addition to the Probable Machine Shop Building
The administrative portion of this building has been extended approximately 180 feet to the southeast. This new portion of the building appears to be structurally complete.



25X1

25X1



25X1

25X1

25X1

FIGURE 5. VLADIVOSTOK SHIPYARD 202,



25X1

25X1

TOP SECRET



Approved For Release 2004/01/16 : CIA-RDP79T00919A000200500001-5

Next 1 Page(s) In Document Exempt

25X1

Approved For Release 2004/01/16 : CIA-RDP79T00919A000200500001-5