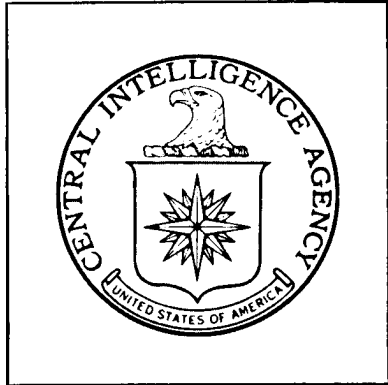


**Top Secret**



**DIRECTORATE OF  
INTELLIGENCE**

**Industrial Facilities  
(Non-Military)**

*Basic Imagery Interpretation Report*

**Pei-ching Chemical Plant No.2**

**Pei-ching, China**



25X1



**Top Secret**

25X1

RCS 13/0002/71

25X1

DATE MARCH 1971

COPY 117

PAGES 9

**Page Denied**

Next 1 Page(s) In Document Denied

TOP SECRET RUFF

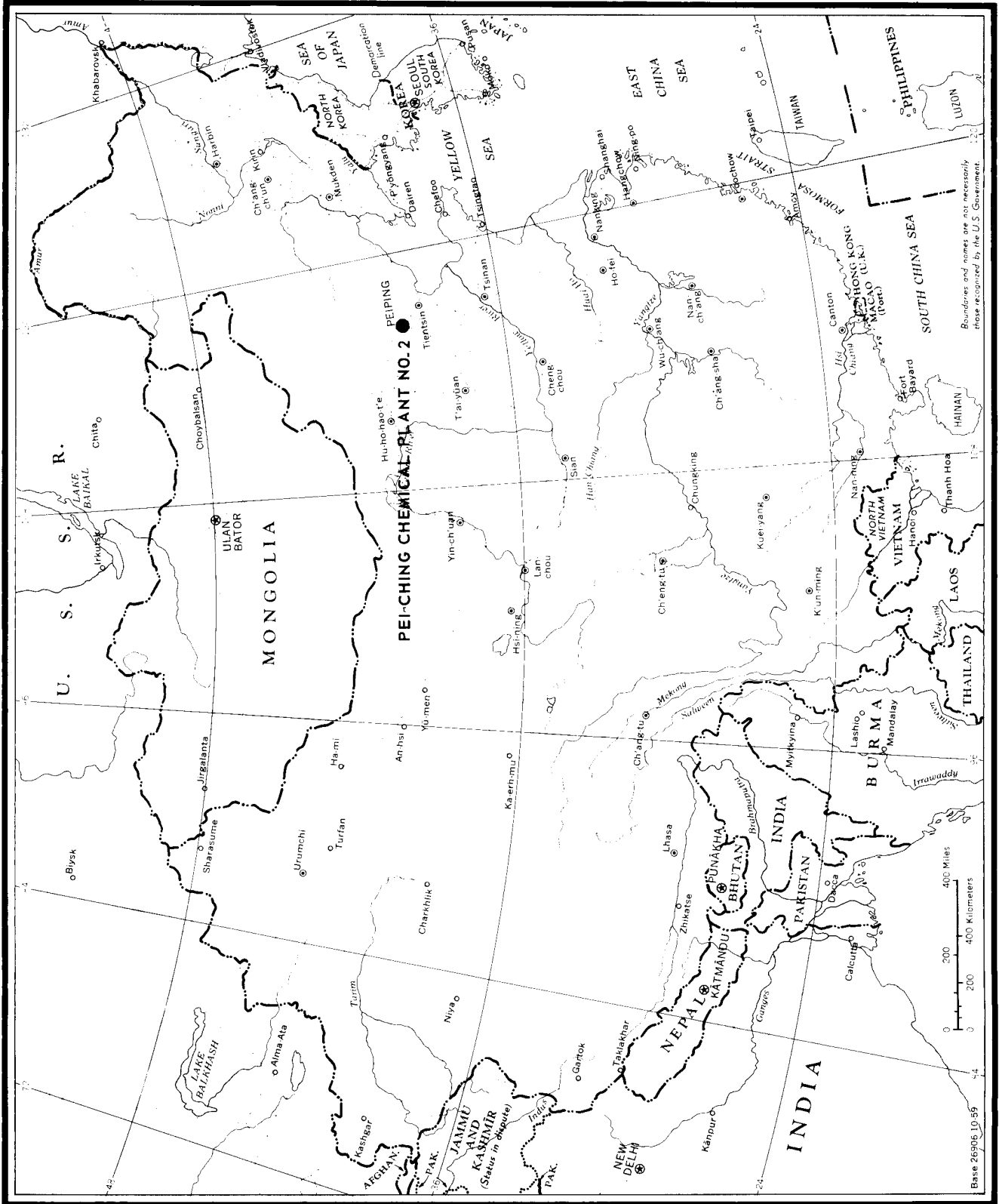


FIGURE 1. LOCATION MAP.

TOP SECRET RUFF

**TOP SECRET RUFF**

25X1

## INTRODUCTION

Pei-ching Chemical Plant No. 2 is located in an industrial area, approximately 4.5 nautical miles east-southeast of the center of Pei-ching (see Figure 1). The chemical plant is part of a large industrial complex which also contains the Pei-ching Experimental Chemical Industry Plant [redacted], the Pei-ching Coke and Chemical Plant [redacted], and the Pei-ching Oxygen Plant [redacted]. The oxygen plant supplies nitrogen to the calcium carbide production area in Chemical Plant No. 2. Electrical power is received from the regional grid.

25X1  
ZS  
ZS

## BASIC DESCRIPTION

Physical Features

The plant occupies an area approximately 3,300 by 3,700 feet and contains about 280 acres (see Figures 2 and 3). It is served by rail spurs from the Chang-hsin-tien to Nan-kou rail line. Hard-surface roads enter the plant on the north, west, and south sides.

Operational Functions

Photography indicates that this is a large integrated chemical plant which produces a wide range of chemicals. Its products include calcium carbide, acetylene, chlorine, caustic soda, vinyl chloride, polyvinyl chloride (PVC), polyvinyl alcohol (Poval), and possibly hydrochloric acid. The flow process for the plant is shown in Figure 4.

An unidentified area (E) located in the northwest corner of the plant could be for the production of chloroprene. The necessary raw materials, acetylene and hydrogen chloride, are available to this area. Also the area is similar to the possible chloroprene production area located at Fu-chou Chemical Plant No. 2 [redacted]

25X1

Construction Chronology

Due to the poor resolution and small scale of the photography of this plant from August 1961 through August 1962, detailed analysis of its early development is not possible.

Good quality, small-scale coverage in February 1964 showed that the major production facilities were complete except for those in the polyvinyl alcohol production area. A Japanese technician reports that he assisted in the construction of a polyvinyl alcohol production section at the plant during early 1965. 1-3/

**TOP SECRET RUFF**

25X1

**Page Denied**

Next 1 Page(s) In Document Denied

TOP SECRET RUFF

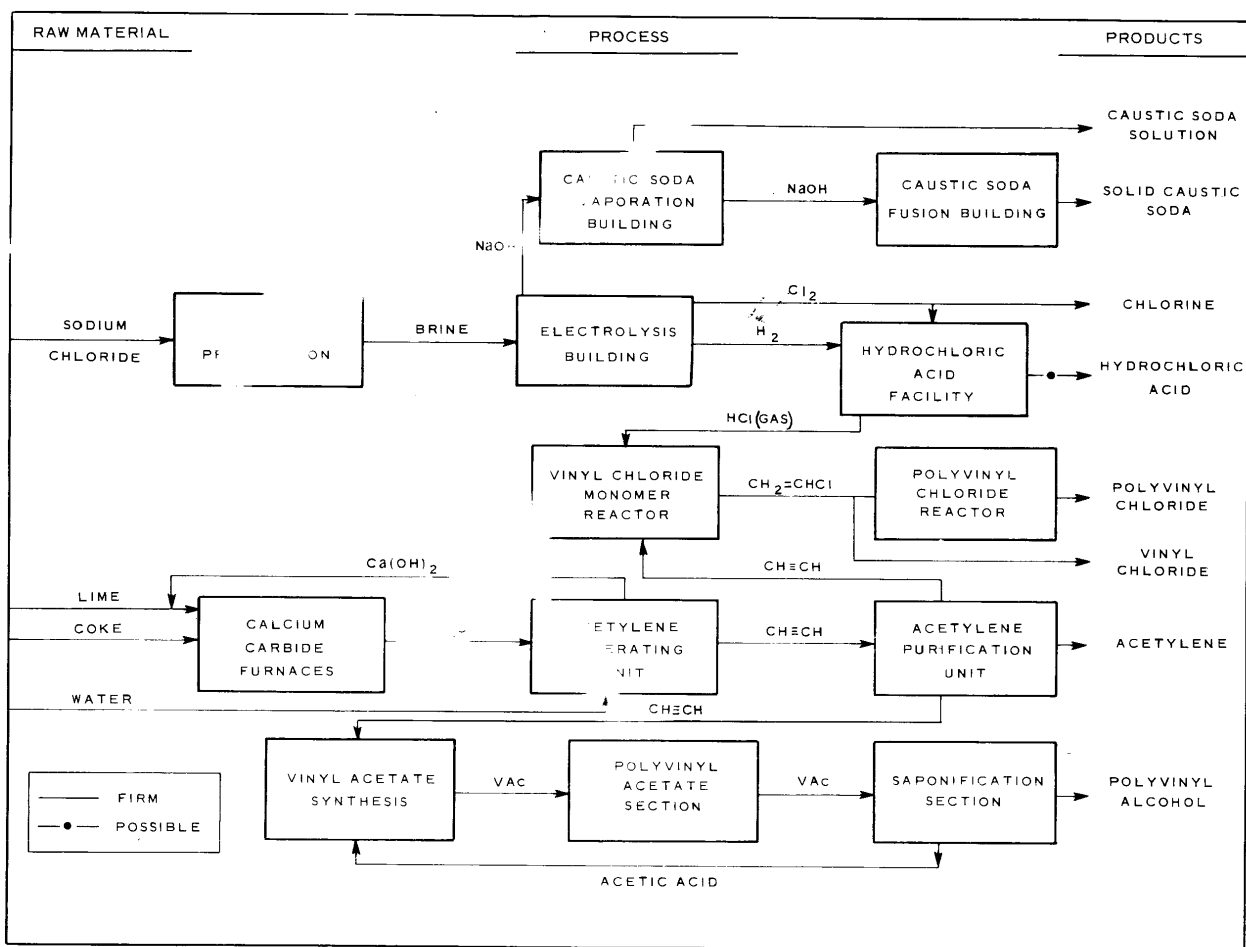


FIGURE 4. PROCESS FLOW AT PEI-CHING CHEMICAL PLANT NO. 2.

25X1

TOP SECRET RUFF

25X1  
25X1



**TOP SECRET RUFF**



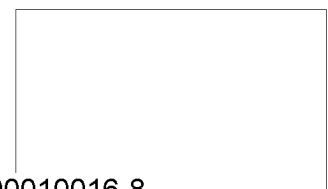
25X1  
2361

Photography of the period from February 1964 to February 1966 confirms this reported construction. Only minor support facilities were added between February 1966 and June 1969. By April 1970, a third calcium carbide furnace building had been constructed.

Operational Status

The plant was possibly in operation when observed on small-scale coverage in 1961 and 1962. On all subsequent photographic coverage through April 1970, the plant appeared to be operating as indicated by smoke emanating from the calcium carbide furnace buildings, variations in the raw material stockpiles, vapors from cooling towers, and by fluctuations in the number of rail cars in the caustic soda and calcium carbide areas. Vapors from its cooling towers indicated the polyvinyl alcohol plant was in operation for the first time in February 1966. The third calcium carbide furnace building had not yet gone into operation when observed on photography of April 1970.

**TOP SECRET RUFF**



25X1

**Page Denied**

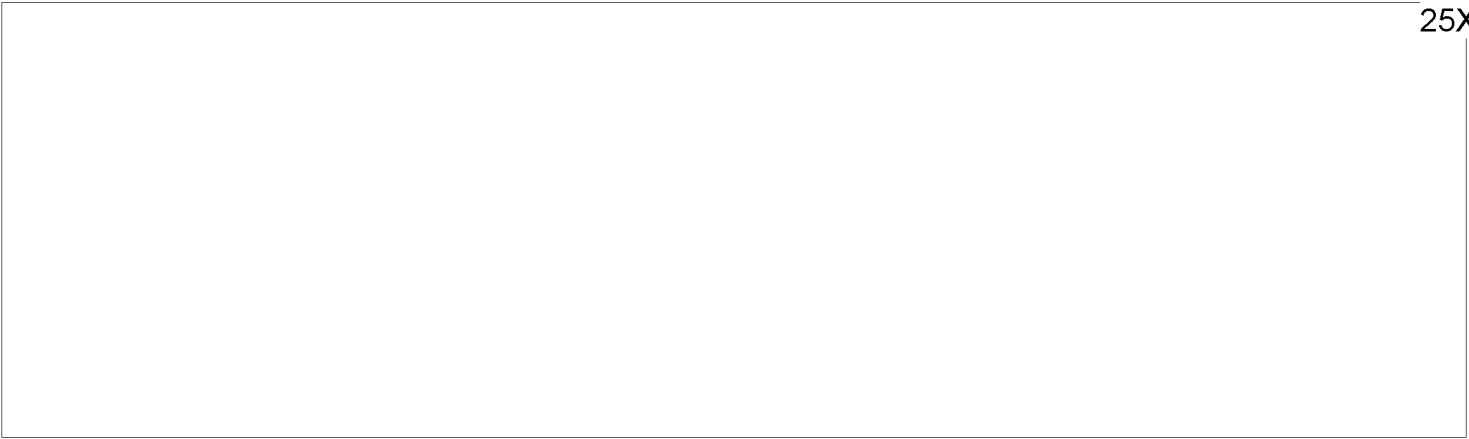




**TOP SECRET RUFF**



25X1  
~~25X1~~



25X1

Map

ACIC. US Air Target Chart, Series 200, Sheet M0381-IHL, 4th edition, November 1965,  
Scale 1:200,000 (SECRET/ [redacted])



25X1  
25X1

Documents

1. DOD. [redacted] Photo and Information on Organic Chemical Plant Located in Southeastern Outskirts of Pei-ping, 8 December 1965 (CONFIDENTIAL) 25X1
2. DOD. [redacted] Factors Contended with in Installation of Vinylon Plant Near Pei-ching, 27 September 1966 (CONFIDENTIAL) 25X1
3. DOD. [redacted] Fragmentary Data on Construction of Vinylon Plant Near Pei-ching, 22 September 1966 (CONFIDENTIAL) 25X1
4. CIA. PIR 5020/65, Chinese Vinylon Fiber Plants, [redacted] June 1965 (TOP SECRET RUFF) 25X1

Requirement

COMIREX N02

Support Number 421927



25X1

**TOP SECRET RUFF**

**Top Secret**



**Top Secret**