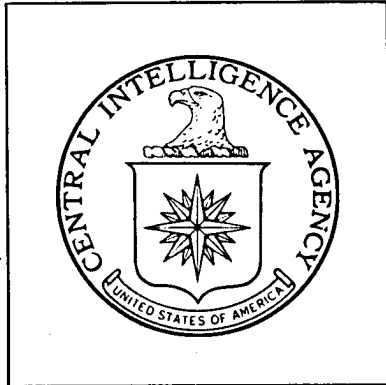


Top Secret



**Industrial Facilities
(Non-Military)**

**DIRECTORATE OF
INTELLIGENCE**

Basic Imagery Interpretation Report

**Major Electric Power Plants
Szechwan Province, China**



Top Secret

25X1

RCS 13/0034/71
25X1

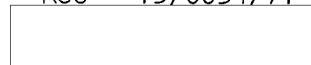
DATE MAY 1971
COPY 117
PAGES 9

Page Denied



TOP SECRET RUFF

RCS - 13/0034/71



25X1
25X1

CENTRAL INTELLIGENCE AGENCY
Directorate of Intelligence
Imagery Analysis Service

ABSTRACT

This report updates the previous basic reporting on three of the major electric power plants in Szechwan Province, central China, using 1969 and 1970 photography. It also includes the initial basic report on a fourth plant. The cut-off date for information is February 1971.

No changes were observed at the Cheng-tu Heat and Thermal Power Plant and the Chung-ching Thermal Power Plant 507. Both plants were operating on the latest coverage.

Nei-chiang Thermal Power Plant Pai-ma-miao has not been seen on interpretable photography since the previous report.

Chiang-yu Thermal Power Plant was partially complete when it was first observed in August 1965. By November 1968, the most recent good-quality coverage, major additions had been constructed. At that time the plant contained two boilerhouses, two generator hall sections, two stacks, a switching yard, a control house, a coal storage and processing facility, and a nearby water intake and treatment facility. The plant was operating when it was last seen in August 1969.

TOP SECRET RUFF



25X1

TOP SECRET RUFF

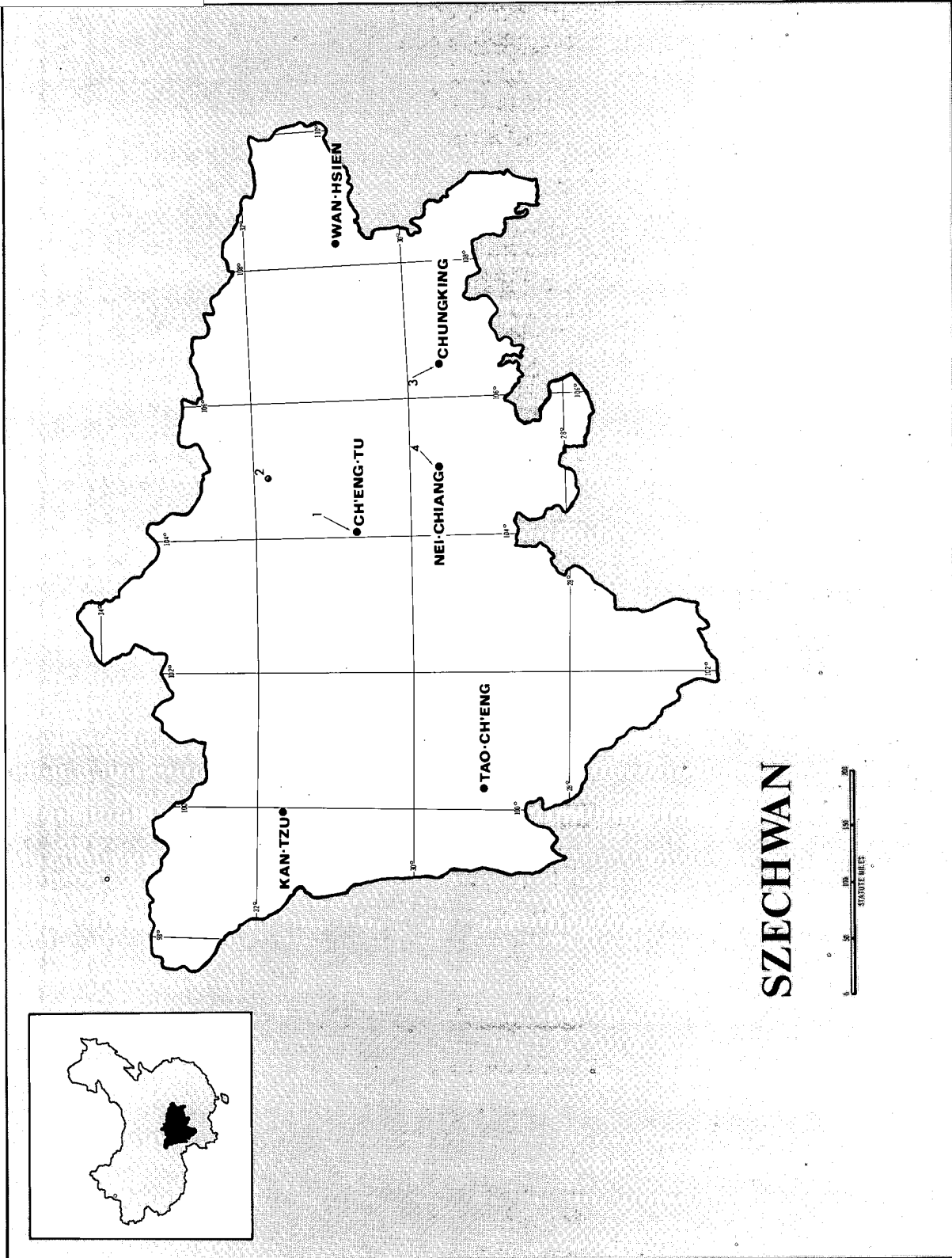


FIGURE 1. LOCATION MAP.

TOP SECRET RUFF

TOP SECRET RUFF

INTRODUCTION

This report covers the following four major power plants in Szechwan Province (see Figure 1).

1. Cheng-tu Heat and Thermal Power Plant.
2. Chiang-yu Thermal Power Plant.
3. Chung-ching (Chungking) Thermal Power Plant 507.
4. Nei-chiang Thermal Power Plant Pai-ma-miao.

Requirement

COMIREX NOI
Support Number 429205

Document

CIA. RCS - 13/0042/70, Major Electric Power Plants, Szechwan Province, China, May 1970, [redacted] (TOP SECRET RUFF)

25X1

TOP SECRET RUFF

25X1

Page Denied

TOP SECRET RUFF

25X1

INSTALLATION OR ACTIVITY NAME		COUNTRY	
Chiang-yu Thermal Power Plant		CH	
UTM COORDINATES	GEOGRAPHIC COORDINATES	COMIREX NO.	NIETB NO.
48RVL788189	31-48-10N 104-45-49E	None	None
MAP REFERENCE			
548th RTS. USATC, Series 200, Sheet M0495-3HL, 1st ed. Nov 66. Scale 1:200,000			
(SECRET)			
LATEST IMAGERY USED		NEGATION DATE (If required)	
		NA	

25X1

25X1

25X1

BASIC DESCRIPTION

Chiang-yu Thermal Power Plant is located about 5 nm south of Chiang-yu, China. It is served by road and rail.

On the most recent good-quality photography of this plant in November 1968, it consisted of two boilerhouses, two generator hall sections, one small and one large stack, a switching yard, a control house, and a coal storage and processing facility. A water intake and treatment facility, located 1 nm to the southwest, is connected to the plant by a buried pipeline. The small boilerhouse contains two boilers and the large boilerhouse contains at least three boilers. The position of the large masonry stack in relation to the large boilerhouse indicates that it could be expanded.

The western section of the plant appeared complete when the plant was first observed on photography of August 1965. It consisted of one boilerhouse with two boiler units and a generator hall section, a small stack, a switching yard, a control house, and a coal storage and processing facility. Large additions were being constructed at the eastern ends of the boilerhouse, generator hall section, and switching yard. A second (large) masonry stack was also under construction.

Poor-quality coverage of November 1966 and January 1967 precluded an analysis of construction progress on the additions to the plant. In November 1968, the large boilerhouse with at least three boiler units and the generator hall sections were observed completed. Only the two stacks and the coal storage and processing facility were discernible on poor-quality photography of August 1969. It was not possible to determine if any changes had occurred at the plant since November 1968.

The plant was operating in November 1966 and August 1969 as indicated by heavy smoke coming from the large masonry stack. This probably indicates that at least one of the boilers in the large boilerhouses was operational as early as November 1966. The plant did not appear to be operating in August 1965, January 1967, and November 1968.

25X1

TOP SECRET RUFF



TOP SECRET RUFF



25X1

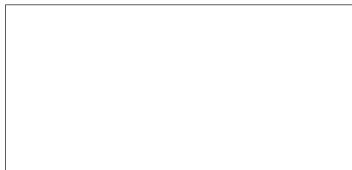


25X1

Key to Annotations
(Figure 2)

<u>Item No.</u>	<u>Description</u>	<u>Dimensions (Ft)</u>
1	Coal processing/storage facility	---
2	Large boilerhouse	225 x 100
3	Large generator hall	260 x 105
4	Switch yard	---
5	Control house	85 x 45
6	Small generator hall	110 x 70
7	Small boilerhouse	110 x 95
8	Small stack	---
9	Large stack	---
10	Water intake and treatment facility	---

TOP SECRET RUFF



25X1

TOP SECRET RUFF

25X1

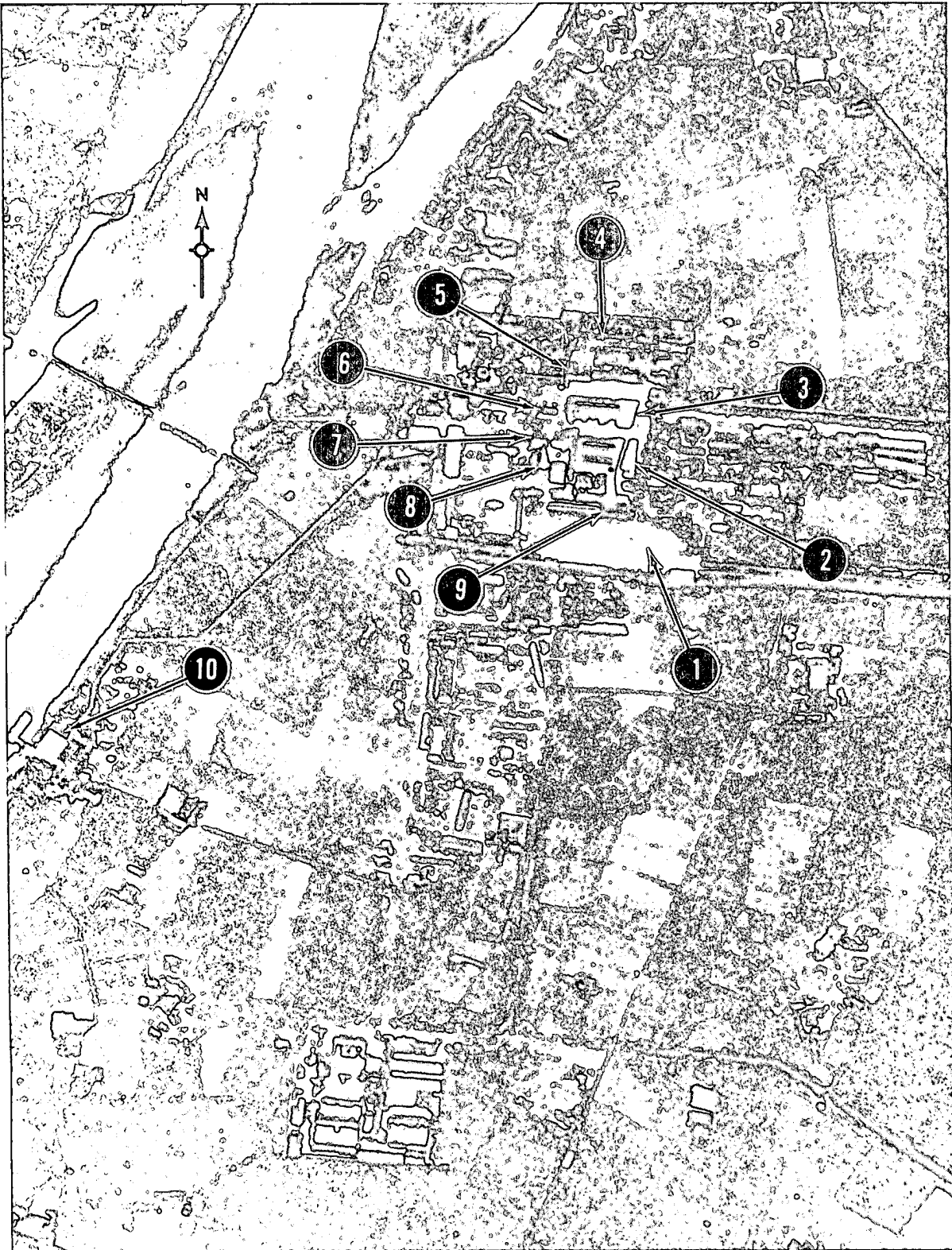


FIGURE 2. CHIANG-YU THERMAL POWER PLANT.

25X1

25X1

TOP SECRET RUFF

Page Denied

TOP SECRET RUFF

25X1

INSTALLATION OR ACTIVITY NAME

COUNTRY

Nei-chiang Thermal Power Plant Pai-ma-miao

CH

UTM COORDINATES

GEOGRAPHIC COORDINATES

48RWH006668

29-31-45N 105-00-22E

25X1

MAP REFERENCE

2nd RTS. USATC, Series 200. Sheet M0495-18HL. 3rd ed. Apr 69. Scale 1:200,000

(SECRET)

25X1

LATEST IMAGERY USED

NEGATION DATE (If required)

NA

25X1

BASIC DESCRIPTION

No interpretable photography of Nei-chiang Thermal Power Plant Pai-mai-miao has been obtained since February 1969, the date of the latest photography used in the previous report.

TOP SECRET RUFF

25X1

Top Secret



Top Secret