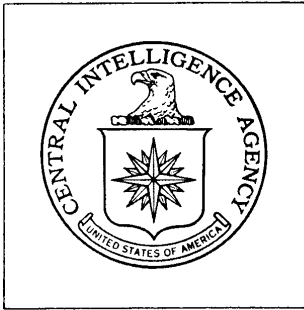


Top Secret



DIRECTORATE OF
INTELLIGENCE

**Ground Force
Facilities**

Basic Imagery Interpretation Report

**Komsomolsk Ammunition Depot
BAM Railroad North DA-1**

Komsomolsk, USSR



25X1



25X1

Top Secret

RCS 07/0109/69
25X1
DATE NOVEMBER 1968
COPY 100
PAGES 3

Page Denied

RECORD COPY | COPY NO. | PIR. DATE | LOCATION | Approved For Release 2008/06/25 : CIA-RDP79T00909A000200010079-8 | LOCATION

DISPOSITION DATE(S)				STOCK LEVEL	MINIMUM 1	MAXIMUM 10
CUT TO COPIES 0	DATE 1-75	CUT TO COPIES	DATE	COPIES DESTROYED		
CUT TO COPIES	DATE	CUT TO COPIES	DATE			
CUT TO COPIES	DATE	MASTER	DATE			

DATE			RECEIVED OR ISSUED	NUMBER OF COPIES			DATE			RECEIVED OR ISSUED	NUMBER OF COPIES		
MO.	DAY	YR.		REC'D	ISS'D	BAL	MO.	DAY	YR.		REC'D	ISS'D	BAL
12	30	68	Dist. Unit #101-110	10		10							
1	2	74	Unit # 101-110	10		0							

TOP SECRET RUFF

25X1

IMAGERY ANALYSIS SERVICE

RCS 07/0109/69

25X1

INSTALLATION OR ACTIVITY NAME	COUNTRY	UTM COORDINATES	GEOGRAPHIC COORDINATES
Komsomolsk Ammunition Depot BAM Railroad North DA-1	UR	N/A	50-35N 136-55E
		WAC/PIC	25X1
		0204/13-T	

MAP REFERENCE

N/A

LATEST IMAGERY USED	NEGATION DATE (IF REQUIRED)
	N/A

25X1

ABSTRACT

This report is a photographic study of this ground force installation. It contains an annotated photograph of the installation and provides the following data:

- a. Delineation of installation boundaries
- b. Identification of functional areas
- c. Measurements of all barracks and vehicle storage structures
- d. Equipment identifications from the best or most recent large-scale KEYHOLE photography

NOTE: This report has been published as an interim Basic Imagery Interpretation Report with the concurrence of the Defense Intelligence Agency.

TOP SECRET RUFF

25X1

TOP SECRET RUFF

25X1

IMAGERY ANALYSIS SERVICE

25X1

The following alphabetical designators are used to identify functional areas within military installations.

- A. Billeting area
- B. Vehicle storage/maintenance area
- C. General storage area
- D. Ammunition storage area
- E. Miscellaneous areas (hospitals, prisons, POL, personnel training facilities)
- F. Small arms range
- G. Driver training area
- H. Support area
- J. Tank/assault-gun range
- K. Automatic weapons range
- L. Subcaliber range
- M. APC range
- N. Combined arms range
- P. Artillery training area
- Q. Infantry training area
- R. Special or unidentified area

- NOTE:
1. The absence of one or more alphabetical designators indicates that those functional areas were not observed at that particular installation.
 2. Lower case letters (e.g., Ba) are used to identify more than one area of a particular functional category.

TOP SECRET RUFF

25X1

TOP SECRET RUFF

IMAGERY ANALYSIS SERVICE

KOMSOMOLSK AMMUNITION DEPOT
BAM RAILROAD NORTH DA-1

LOCATION: Approximately 5 nautical miles west-northwest of
Komsomolsk

FUNCTIONAL ANALYSIS:

B. Vehicle Storage Area

2 Vehicle sheds

Comment

This area is secured and has a wide firebreak.

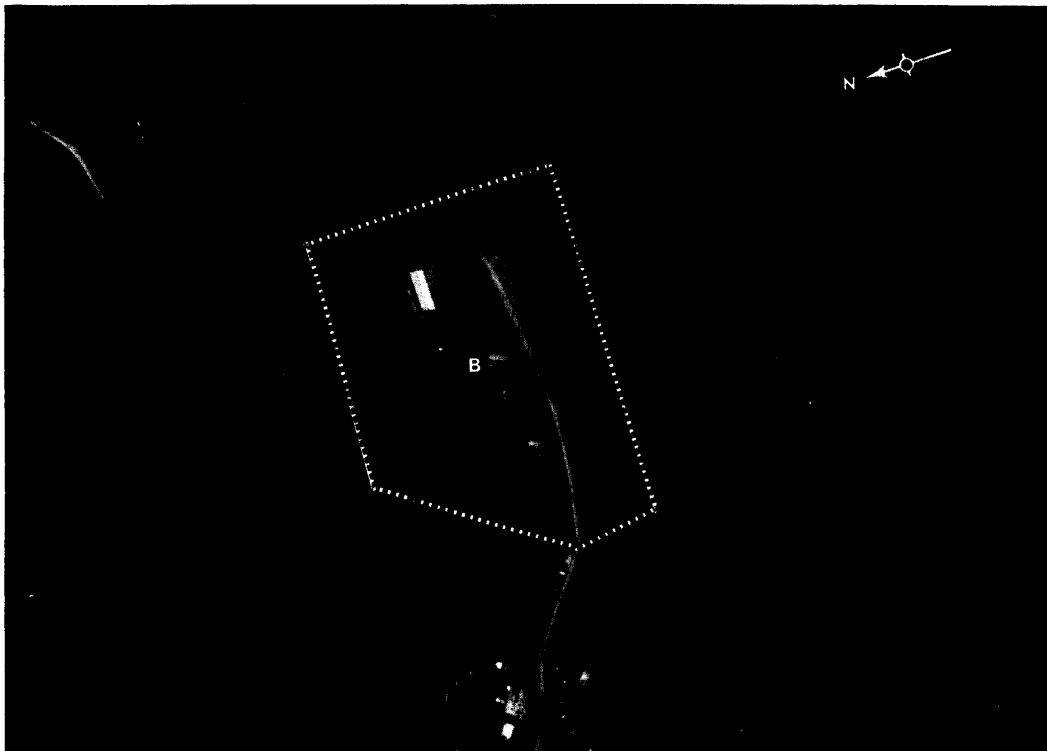
159 Possible antiaircraft artillery
pieces

134 Unidentified vehicles/pieces of
equipment
(Some of these are possible one-
and two-axle trailers.)

Requirement

EXSUBCOM - BR-G/005-69

* All dimensions are given in feet.



KOMSOMOLSK AMMUNITION DEPOT BAM RAILROAD NORTH DA-1, (50-35N 136-55E)

TOP SECRET RUFF

Top Secret



Top Secret