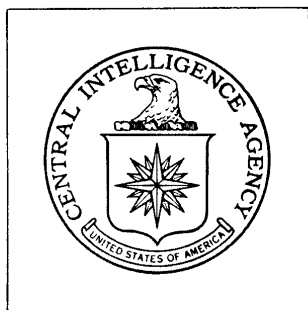


Top Secret



DIRECTORATE OF
INTELLIGENCE

**Ground Force
Facilities**

Basic Imagery Interpretation Report

Bilituy Military Installation

Bilituy, USSR



25X1

Top Secret

RCS [redacted] 25X1
DATE AUGUST 1968
COPY 04
PAGES 4

Page Denied

TOP SECRET RUFF

RCS 07/0048/69

IMAGERY ANALYSIS SERVICE

INSTALLATION OR ACTIVITY NAME	COUNTRY	UTM COORDINATES	GEOGRAPHIC COORDINATES
Bilituy Military Installation	UR	N/A	49-49N 117-05E
CATEGORY	BE NUMBER	COMIREX NO.	NIETB NO.
N/A	N/A	N/A	N/A

MAP REFERENCE

ACIC, USATC 200 Sheet 0202-12HL, 2d ed, Jul 63,
scale 1:200,000 (Secret)

NEGATION DATE (IF REQUIRED)
N/A

25X1

ABSTRACT

This report is a photographic study of this ground force installation. It contains an annotated photograph of the installation and provides the following data:

- a. Delineation of installation boundaries
- b. Identification of functional areas
- c. Measurements of all barracks and vehicle storage structures
- d. Equipment identifications from the best or most recent large-scale KEYHOLE photography

NOTE: This report was prepared in direct support of the Central Intelligence Agency. By agreement with DIAAP-9 it will serve as an interim Basic Imagery Interpretation Report.

TOP SECRET RUFF

25X1

TOP SECRET RUFF

25X1

25X1

IMAGERY ANALYSIS SERVICE

The following alphabetical designators are used to identify functional areas within military installations.

- A. Billeting area
- B. Vehicle storage/maintenance area
- C. General storage area
- D. Ammunition storage area
- E. Miscellaneous areas (hospitals, prisons, POL, personnel training facilities)
- F. Small arms range
- G. Driver training area
- H. Support area
- J. Tank/assault-gun range
- K. Automatic weapons range
- L. Subcaliber range
- M. APC range
- N. Combined arms range
- P. Artillery training area
- Q. Infantry training area
- R. Special or unidentified area

- NOTE:
- 1. The absence of one or more alphabetical designators indicates that those functional areas were not observed at that particular installation.
 - 2. Lower case letters (e.g., Ba) are used to identify more than one area of a particular functional category.

TOP SECRET RUFF

25X1

TOP SECRET RUFF

IMAGERY ANALYSIS SERVICE

BILITUY MILITARY INSTALLATION

LOCATION: 11 nautical miles east-southeast of Dauriya

FUNCTIONAL ANALYSIS:

Aa. Barracks Area

2	Multistory barracks	260 x 50*
1	Possible barracks	185 x 35
1	Possible administration building	
1	Messhall	
2	Support buildings	

Ab. Barracks/Dependents Quarters Area

2	Multistory barracks/dependents quarters	265 x 40
1	Possible messhall	
2	Support buildings	

Ba. Vehicle Storage/Maintenance Area

1	Vehicle shed (probably 15 bays)	230 x 70
1	Vehicle shed under construction (probably 15 bays)	230 x 70
5	Support buildings	

Vehicles

8 Rows of unidentified vehicles

Bb. Vehicle ParkVehicles

6 Short rows of unidentified vehicles

D. Probable Explosives Storage Area

8	Probable storage buildings
4	Support buildings

Comment

This area is doubly secured.

E. Possible POL Storage Area

5 Possible rows of POL tanks

R. Unidentified Area

7	Barracks/storage/support buildings
2	Support buildings

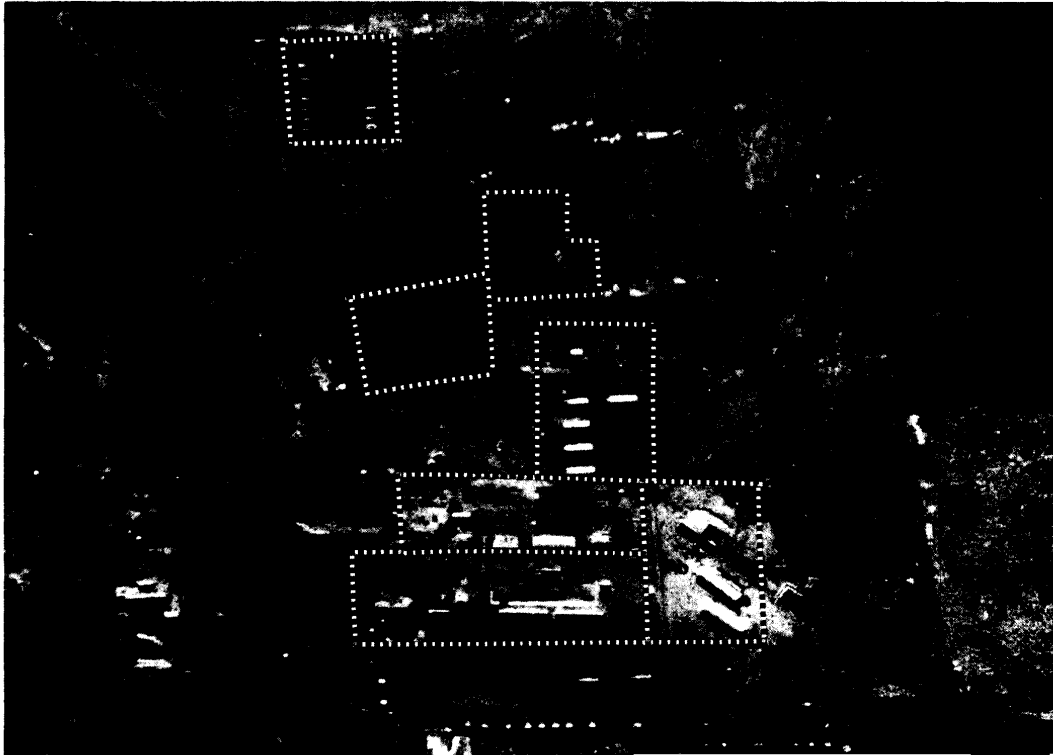
* All dimensions are given in feet.

TOP SECRET RUFF

TOP SECRET RUFF

25X125X1

IMAGERY ANALYSIS SERVICE



BILITUY MILITARY INSTALLATION (49-49N 117-05E)

25X1

TOP SECRET RUFF

25X1

Top Secret



Top Secret