



DIRECTORATE OF  
INTELLIGENCE

## Nan-ching, China

\_\_\_\_\_

**Top Secret**

RCS 13/0007/70  
TCS 19648/69  
DATE NOVEMBER 1969

## WARNING

This document contains information affecting the national security of the United States within the meaning of the espionage laws U. S. Code Title 18, Sections 793, 794. The law prohibits its transmission or the revelation of its contents in any manner to an unauthorized person, as well as its use in any manner prejudicial to the safety or interest of the United States or for the benefit of any foreign government to the detriment of the United States. It is to be seen only by personnel especially indoctrinated and authorized to receive information in the designated control channels. Its security must be maintained in accordance with regulations pertaining to TALENT-KEYHOLE Control System.

GROUP 1 EXCLUDED FROM AUTOMATIC DOWNGRADING AND DECLASSIFICATION
---

Printed by the  
NATIONAL PHOTOGRAPHIC INTERPRETATION CENTER

Handle Via  
Talent: KEYHOLE  
Control System Only

TOP SECRET RUFF

Approved For Release 2001/09/04 : CIA-RDP79T00909A000100010019-2

TCS-19648/69  
RCS - 13/0007/70

CENTRAL INTELLIGENCE AGENCY  
Directorate of Intelligence  
Imagery Analysis Service

INSTALLATION OR ACTIVITY NAME					COUNTRY		
Nan-ching Phosphorous Fertilizer Plant					CH		
UTM COORDINATES		GEOGRAPHIC COORDINATES		CATEGORY	BE NUMBER	COMIREX NO.	NIETB NO.
50SPL670668		32-13-02N 118-46-00E				None	None
MAP REFERENCE							
2nd RTS. USATC, Series 200, Sheet M0386-22HL, 3rd edition, Sep 67, Scale 1:200,000 (SECRET/No Foreign Dissem Except [REDACTED] Controlled Dissem) 25X1C							
LATEST IMAGERY USED				NEGATION DATE (If required)			
[REDACTED]				NA			

ABSTRACT

Analysis of the Nan-ching Phosphorous Fertilizer Plant in China on high-resolution photography shows that the primary products of the plant are superphosphate and probably triple superphosphate fertilizers. Secondary products include sulfuric acid, and probably phosphoric acid and gypsum. A limited quantity of elemental phosphorus is probably produced. Also, phosphorus-based compounds such as insecticides are possibly produced in limited quantities.

This study covers the period from [REDACTED] Ground 25X1D  
photography of [REDACTED] revealed construction activity in the phosphate  
rock storage area. By [REDACTED] the major production facilities were com-  
pleted in the phosphate fertilizer area, the sulfuric acid area, the possible 25X1D  
insecticide area, and the probable elemental phosphorus production area.  
Between [REDACTED] and [REDACTED], support facilities were added in all the  
areas. The plant was observed in operation on photography of [REDACTED] and  
on all subsequent photographic coverage.

This report includes a photograph and a detailed line drawing of the  
plant and a chronological summary of construction and operational status.



~~TOP SECRET RUFF~~

TCS

19648/69

Approved For Release 2001/09/04 : CIA-RDP79-00909A000100010019-2

## INTRODUCTION

The Nan-ching Phosphorous Fertilizer Plant is located along the Yangtze River, approximately 11 nautical miles north of the center of Nan-ching, Kiangsu Province (see Figure 1). It is adjacent to the Nan-ching Chemical Plant Yung-li Chemical Industry [REDACTED]. Electric power is provided by the Nan-ching Heat and Power Plant Ta-chang-chen [REDACTED].

25X1A

25X1A

## BASIC DESCRIPTION

The plant occupies an area approximately 2,300 feet square which contains about 120 acres (see Figures 2 and 3). It is served by a rail spur from the Nan-ching to Chu-hsien rail line. A controlled-access road enters the northwest corner of the plant. A main wharf and two auxiliary wharves on the Yangtze River serve the plant.

The primary function of the plant is the production of superphosphate and probably triple superphosphate fertilizers. Secondary products include sulfuric acid, and probably phosphoric acid and calcium sulfate (gypsum). A limited quantity of elemental phosphorus is probably produced. Also, phosphorus-based compounds such as insecticides are possibly produced in limited quantities. The production flow at the plant is shown in Figure 4.

25X1D

Ground photography shows that the storage facility in the phosphate rock storage area was under construction in [REDACTED]. The first overhead photography of the plant in [REDACTED] shows that the major facilities in the plant were completed and operational. Between [REDACTED] minor support buildings were constructed. The chronology of construction is shown in Figure 3.

25X1D

The plant was observed in operation on photography of [REDACTED] and on all subsequent photography as evidenced by emissions of smoke, acid mist, and vapors, and by the variation in the number of rail cars and barges.

25X1D

~~TOP SECRET RUFF~~

Approved For Release 2001/09/04 : CIA-RDP79-00909A000100010019-2

Handle Via  
Talent-KEYHOLE  
Control System Only

Approved For Release 2001/09/04 : CIA-RDP79T00909A000100010019-2

TOP SECRET RUFF



FIGURE 2. NAN-CHING PHOSPHOROUS FERTILIZER PLANT, [REDACTED]

25X1D

Approved For Release 2001/09/04 : CIA-RDP79T00909A000100010019-2

TOP SECRET RUFF

Handle Via  
Talent-KEYHOLE  
Control System Only

TOP SECRET RUFF

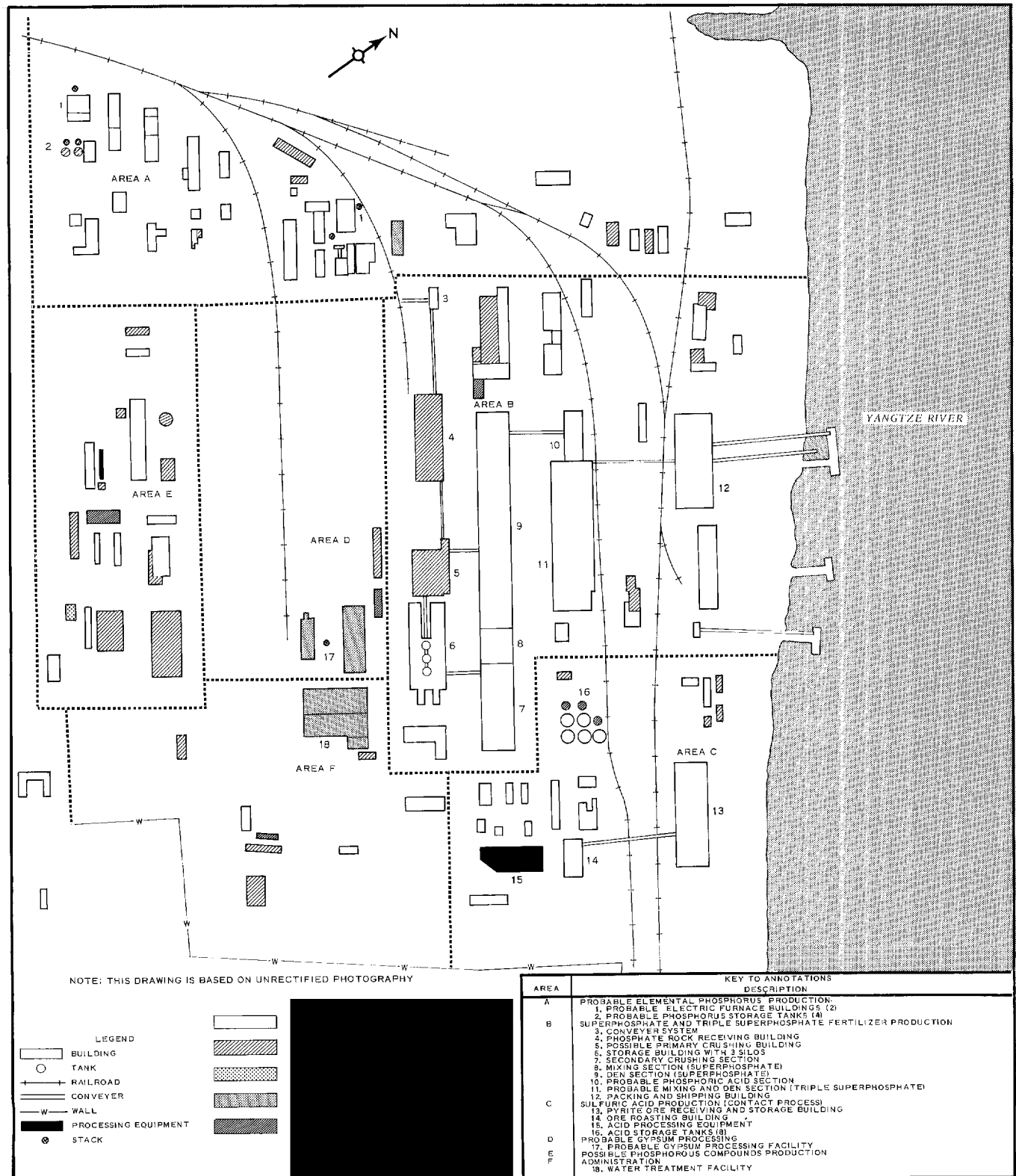


FIGURE 3. PHOSPHOROUS FERTILIZER PLANT, NAN-CHING

TOP SECRET RUFF

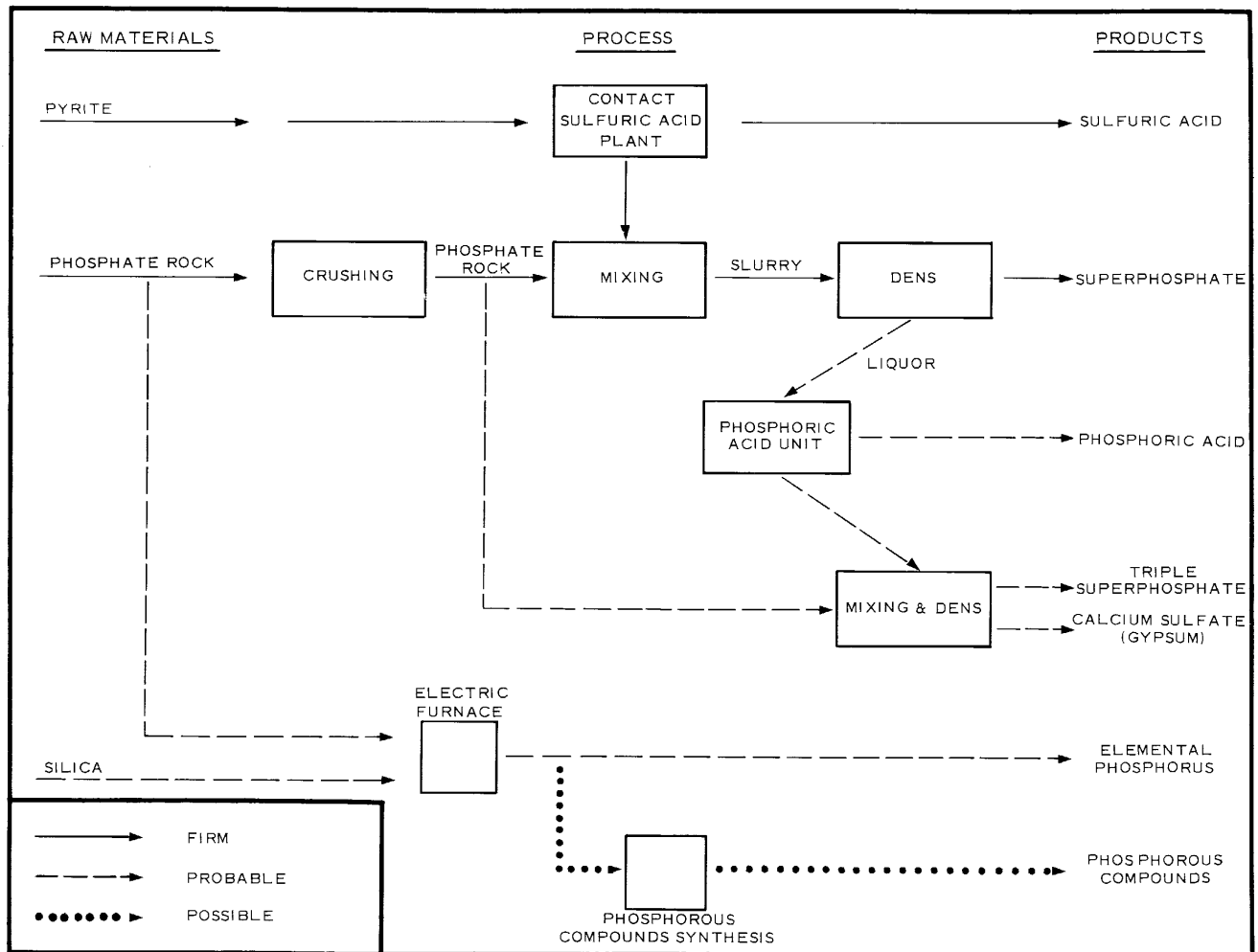


FIGURE 4. PRODUCTION FLOW AT NAN-CHING PHOSPHOROUS FERTILIZER PLANT.



Handle Via  
Talent-KEYHOLE  
Control System Only

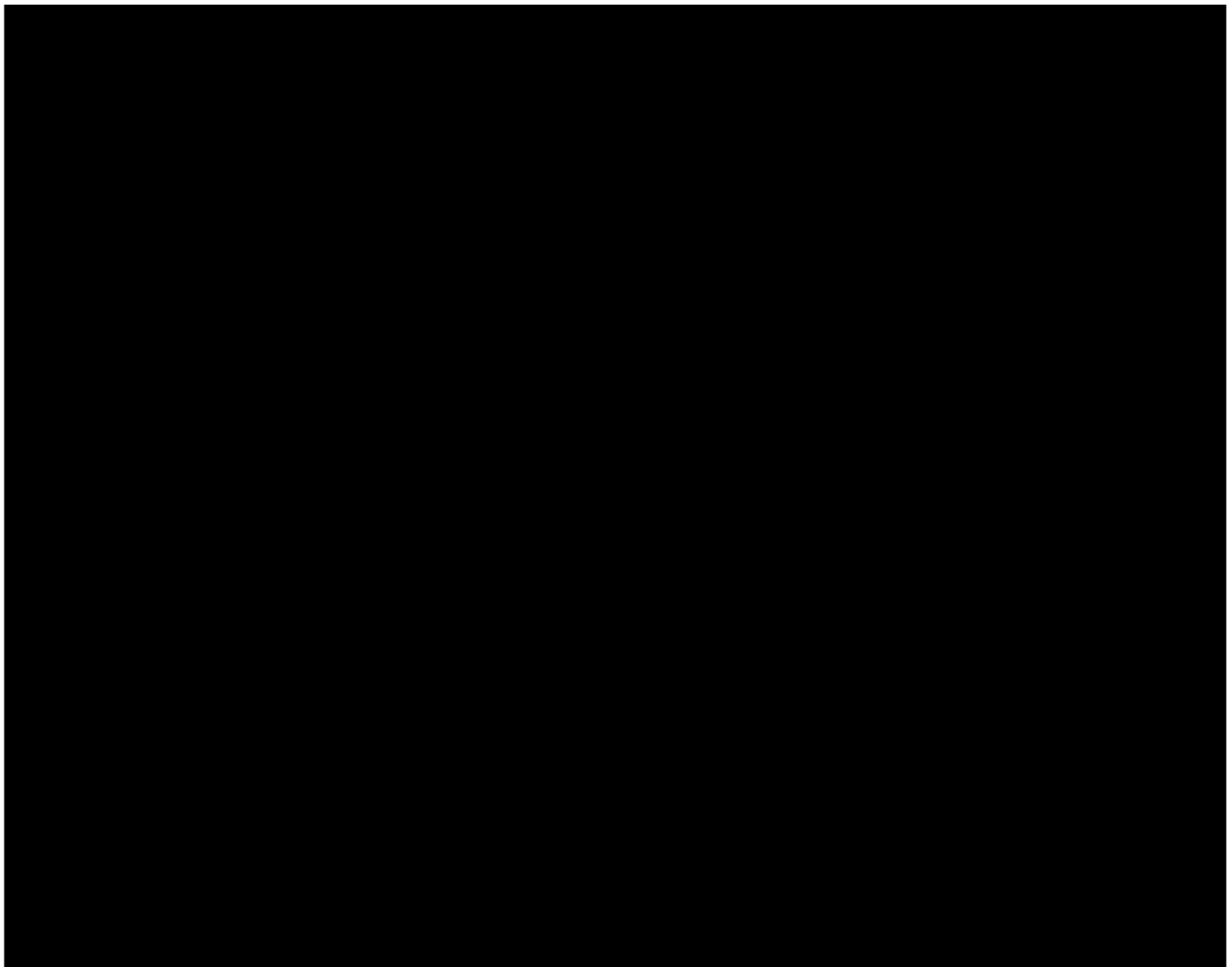
Approved For Release 2001/09/04 : CIA-RDP80-00909A000100010019-2

TOP SECRET RUFF  
ICS - 19648/69

## REFERENCES

Aerial Photography

25X1D



Map

25X1C

25X1C 2nd RTS. US Air Target Chart, Series 200, Sheet M0386-22HL, 3rd edition, September 1967, Scale 1:200,000 (SECRET/No Foreign Dissem Except [redacted])

Requirement

COMIREX N02  
Support Number 420118

**Top Secret**



**Top Secret**