

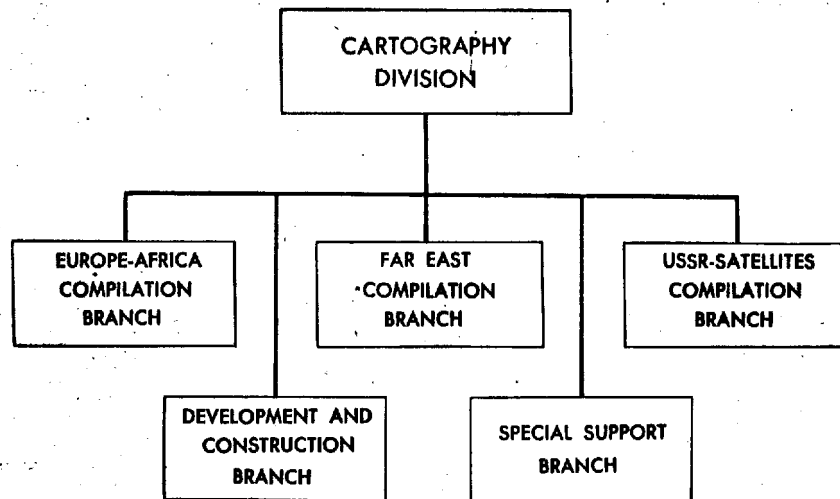
~~SECRET~~

1 December 1960

Office Regulation 1-13

ORGANIZATION

Office of Research and Reports
Geographic Research Area



CARTOGRAPHY DIVISION

MISSION

The Cartography Division is responsible for providing cartographic intelligence support to the CIA, Department of State, and other USIB agencies as directed.

FUNCTIONS

Within its field of responsibility, the Cartography Division shall:

1. Compile and construct maps, charts, and graphs required by the CIA and the Department of State.
2. Provide ad hoc cartographic assistance to other intelligence agencies as appropriate.
3. Develop improved cartographic techniques and procedures.
4. Coordinate specified aspects of map production for the NIS program.

~~SECRET~~

S-E-C-R-E-T

1 December 1960

Office Regulation 1-13

ORGANIZATION

Office of Research and Reports
Geographic Research Area
Cartography Division

DEVELOPMENT AND
CONSTRUCTION
BRANCH

25X1A8a

DEVELOPMENT AND CONSTRUCTION BRANCH

MISSION

The Development and Construction Branch is responsible for the construction of maps, charts, and graphs undertaken by the Division, and the conduct of cartographic training and development.

FUNCTIONS

Within its field of responsibility, the Development and Construction Branch shall:

1. Draft map color separation plates according to specifications.
2. Produce special charts and graphs for illustrative purposes.
3. Compile and construct terrain drawings which portray the type and distribution of the physiographic features of the earth.

S-E-C-R-E-T

S-E-C-R-E-T

1 December 1960

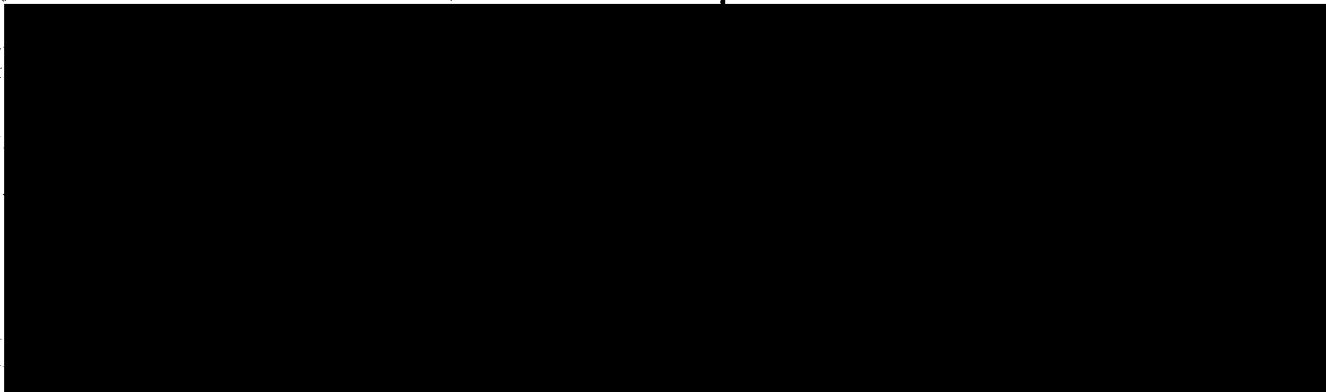
Office Regulation 1-13

ORGANIZATION

Office of Research and Reports
Geographic Research Area
Map Library Division

25X1A8a4

PROCESSING
BRANCH



PROCESSING BRANCH

MISSION

The Processing Branch is responsible for maintaining a collection of maps and related geographic reference materials in support of the CIA, Department of State, and other USIB agencies.

FUNCTIONS

Within its field of responsibility, the Processing Branch shall:

1. Catalog, index, and record all maps and related geographic reference materials acquired by the Map Library Division.
2. Maintain the map collection and replenish stocks of maps as required.
3. Maintain circulation records on materials loaned to or borrowed from other repositories.
4. Coordinate with other map repositories to exchange and circulate information on new map acquisitions within the intelligence community.

121

S-E-C-R-E-T

S-E-C-R-E-T

1 December 1960

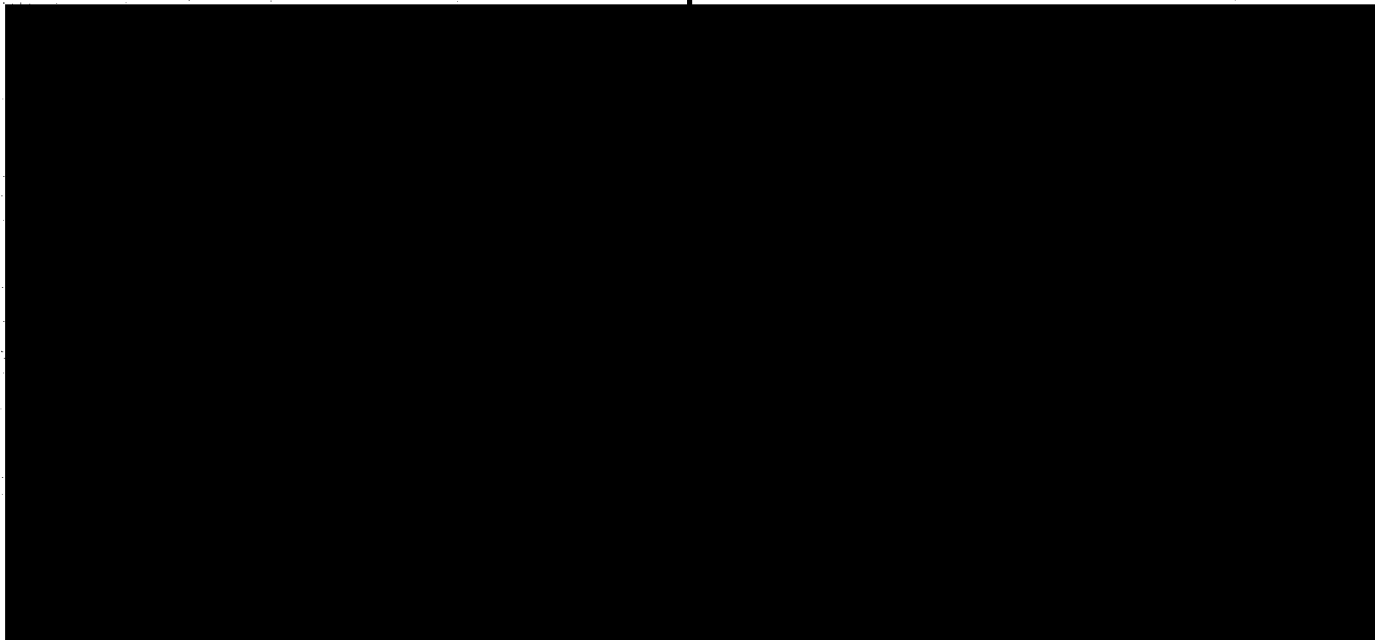
Office Regulation 1-13

ORGANIZATION

Office of Research and Reports
Geographic Research Area
Map Library Division

PROCUREMENT
BRANCH

25X1A8a



PROCUREMENT BRANCH

MISSION

The Procurement Branch is responsible for providing staff support and guidance to the interagency foreign map procurement program.

FUNCTIONS

Within its field of responsibility, the Procurement Branch shall:

S-E-C-R-E-T

S-E-C-R-E-T

1 December 1960

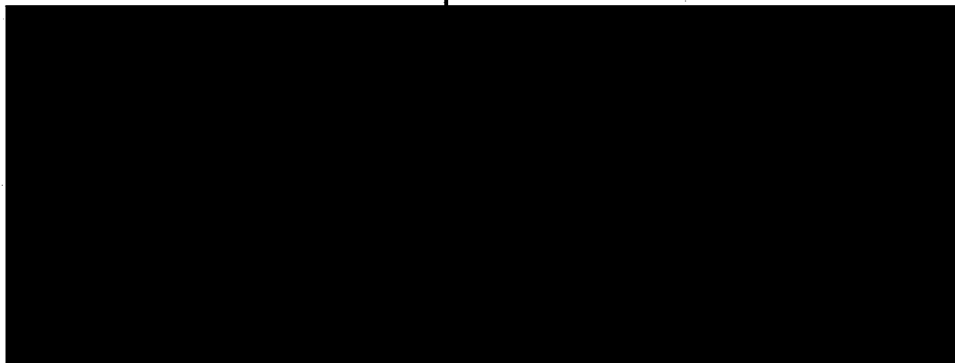
Office Regulation 1-13

ORGANIZATION

Office of Research and Reports
Geographic Research Area
Map Library Division

REFERENCE
BRANCH

25X1A8a



REFERENCE BRANCH

MISSION

The Reference Branch is responsible for providing a map reference service in support of the CIA, Department of State, and other USIB agencies.

FUNCTIONS

Within its field of responsibility, the Reference Branch shall:

1. Assist authorized personnel in the selection, use, and evaluation of maps and related geographic publications.
2. Borrow maps from other organizations as needed.
3. Recommend procurement of new or additional maps for the improvement of the map collection.

S-E-C-R-E-T