

~~CONFIDENTIAL~~

(c) NATIONAL PHOTOGRAPHIC INTERPRETATION CENTER

25X1

REFERENCES:



ATTACHMENT TO L-1383
2 AUGUST 1966
PAGE 1


RAILROAD CABLE BRIDGE AND BY-PASS CONSTRUCTION
XOM KHE, NORTH VIETNAM
1758N 10555E

(SEE NPIC BRIEFING BOARD L-1278 FOR COMPARISON)

1. SIGNIFICANCE:


THIS BRIEFING BOARD REVEALS A RAILROAD CABLE BRIDGE AND A RAILROAD BY-PASS UNDER CONSTRUCTION.

2. LOCATION:

THE RAILROAD CABLE BRIDGE IS LOCATED AT THE SITE OF THE DESTROYED XOM KHE RAILROAD BRIDGE OVER KHE NET  JUST SOUTHWEST OF XOM KHE AND 2.4 NM NORTHWEST OF KIM LU XA ON THE VINH/DONG HOI RAIL LINE.

25

3. REMARKS:

RECONNAISSANCE PHOTOGRAPHY OF  REVEALED THE FIRST KNOWN VEHICULAR CABLE BRIDGES IN NORTH VIETNAM AND LAOS. THE TECHNIQUE EMPLOYED CONSISTED OF THE IMPLEMENTATION OF CABLES AND REMOVABLE SECTIONS OF BRIDGE DECKING IN ORDER TO MAKE AN APPARENTLY UNSERVICEABLE BRIDGE SERVICEABLE.

25

4. MISSION READOUT:

PHOTOGRAPHY OF 

25

These notes have been prepared for briefing purposes only and should not be used for detailed analytical work. Their use should be restricted to the particular briefing board(s) they were prepared for and must be considered valid only for the reporting period as indicated by the date of issue. For information concerning these notes contact Chief, Collateral Support Division, NPIC.

GROUP 1
Excluded from automatic
downgrading and declassification

~~CONFIDENTIAL~~

CONFIDENTIAL

(c) NATIONAL PHOTOGRAPHIC INTERPRETATION CENTER

25X1
25X1

REFERENCES:



ATTACHMENT TO L-1383
2 AUGUST 1966
PAGE 2



REVEALS THE FOLLOWING CONSTRUCTION ACTIVITY:

25X1



REVEALS WOODEN A-FRAME CABLE SUPPORTS LYING ON THE GROUND AND ON THE TRUSS OF THE DESTROYED XOM KHE RAILROAD BRIDGE. CLEARING OPERATIONS FOR THE BRIDGE APPROACHES HAVE STARTED, AND CABLE ANCHORAGES ARE UNDER CONSTRUCTION.

25X1



DEPICTS SEVEN WOODEN A-FRAME CABLE SUPPORTS (FOUR OF WHICH ARE CONSTRUCTED ON THE TRUSS OF THE DESTROYED BRIDGE), TWO CABLES SPANNING THE RIVER, AND A CABLE ANCHORAGE ON EACH BANK. A SMALL RAIL SECTION IS OBSERVED ON THE NORTHWEST BANK OF THE KHE NET.

25X1



REVEALED THAT THE RAIL SECTION THAT WAS

25X1

OBSERVED UNDER CONSTRUCTION ON  WAS CONSIDERABLY LONGER. (NOT SHOWN ON GRAPHIC)

25X1



REVEALS THAT THE RAIL SECTION HAS BEEN PLACED ON TOP OF THE CABLES THAT SPAN THE RIVER. CONSTRUCTION OF THE APPROACHES HAS CONTINUED; HOWEVER, THERE IS NO CONNECTION BETWEEN THE MAIN RAIL LINE AND THE APPROACHES. THE PREVIOUSLY REPORTED RAILROAD BY-PASS HAS BEEN EXTENDED AND CONSTRUCTION IS NOW OBSERVED ON BOTH SIDES OF THE KHE NET. NO BY-PASS BRIDGE IS OBSERVED.

25X1



These notes have been prepared for briefing purposes only and should not be used for detailed analytical work. Their use should be restricted to the particular briefing board(s) they were prepared for and must be considered valid only for the reporting period as indicated by the date of issue. For information concerning these notes contact Chief, Collateral Support Division, NPIC.

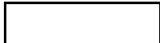
CONFIDENTIAL

CONFIDENTIAL

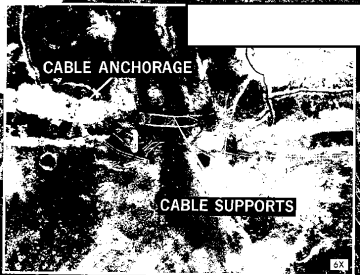


NATIONAL PHOTOGRAPHIC INTERPRETATION CENTER

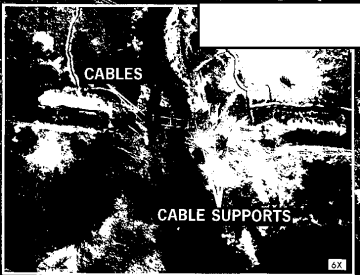
RAILROAD CABLE BRIDGE AND BY-PASS CONSTRUCTION XOM KHE, NORTH VIETNAM 17-58N 105-55E



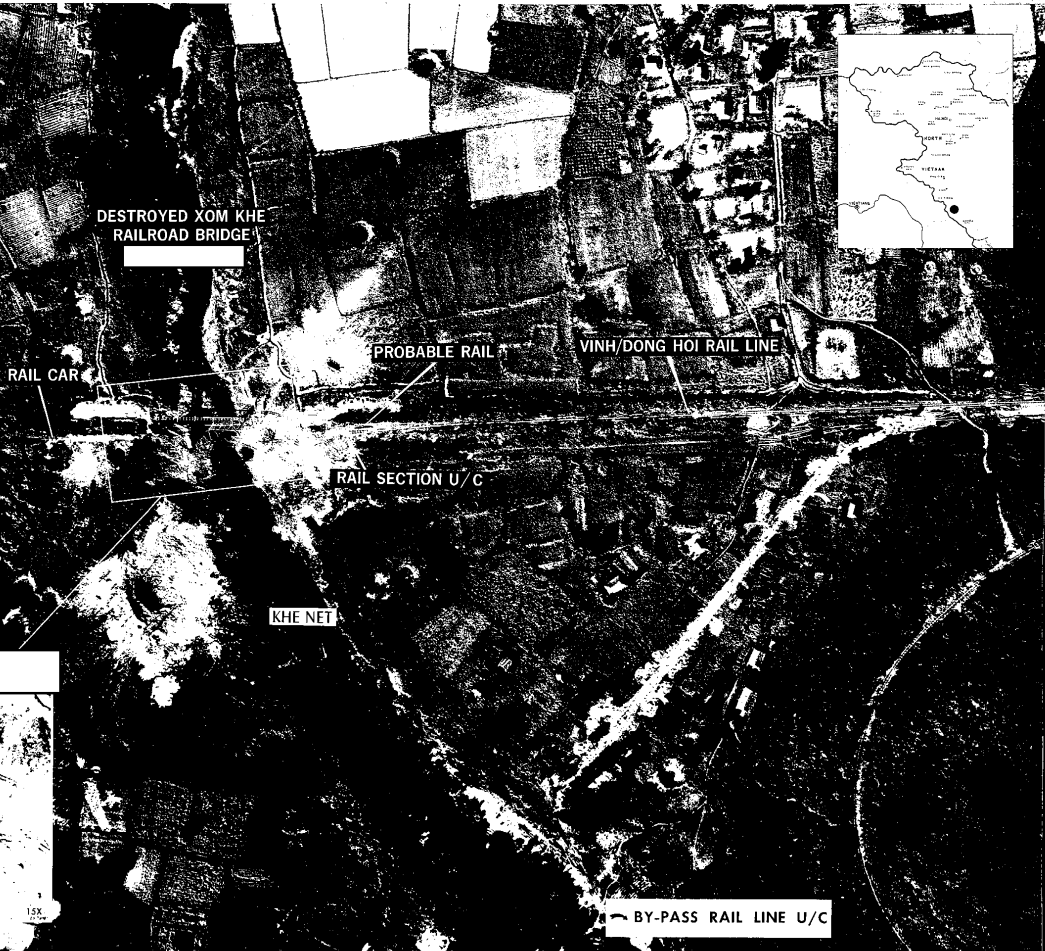
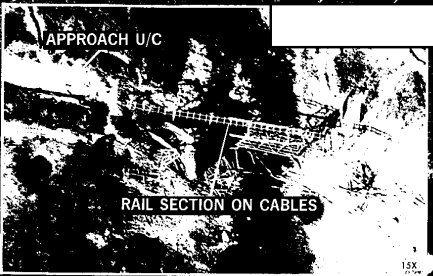
25X1



25X1

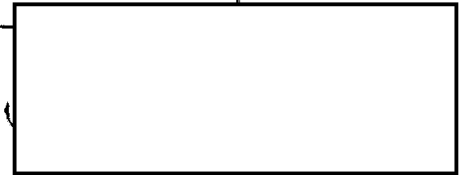


25X1



Ordered 28 July
Being complete

67-A636
67A979m
67A636m



REPRODUCTION OF THIS DOCUMENT IN
WHOLE OR IN PART IS PROHIBITED
EXCEPT WITH THE PERMISSION OF THE
OFFICE OF ORIGIN.