

SECRET

(c) NATIONAL PHOTOGRAPHIC INTERPRETATION CENTER

REFERENCE: GT 8101

ATTACHMENT TO L-1020
25 JUNE 1966
PAGE 1

LA SALUD DUMMY AND ACTIVE SAM SITES
CUBA
2253N 08224W

- 1. SIGNIFICANCE: TO CONFIRM THE EXISTENCE OF THE "DUMMY" SITE REPORTED BY CABLE BY AIC AND SHOW ITS RELATIVE LOCATION TO THE ACTIVE SITE.
- 2. LOCATION: 1.1 NM SSE OF LA SALUD AT 22-52-15N 082-24-10W (UTM 17QLR561297).
- 3. FIRST IDENTIFICATION: 25X1
- 4. NEGATION DATE: 25X1
(NOTE: AREA WAS CLOUD-COVERED ON 25X1
 25X1)
- 5. SUBSEQUENT COVERAGE: AREA HAS BEEN COVERED BY NUMEROUS GOLDEN TREE MISSIONS.
- 6. READOUT: CONTINUING ANALYSIS BY AIC OF GOLDEN TREE 8101, 14 JUNE 1966 REVEALED A DUMMY SAM SITE LOCATED 1.1 NM SSE OF LA SALUD SAM SITE. SITE CONSISTS OF 6 DUMMY MISSILES ON PROPS IN A CIRCULAR PATTERN, A SIMULATED GUIDANCE AREA, AND A MISSILE HOLD AREA WITH 2 DUMMY MISSILES. NO PRIME MOVERS, VEHICLES, RADAR OR OTHER EQUIPMENT ASSOCIATED WITH A SA-2 SITE ARE VISIBLE. THIS REPRESENTS THE FIRST DUMMY SIGHTED IN CUBA. (NOTE: NPIC CONCURS.)

Declassification Review by
NGA/DoD

These notes have been prepared for briefing purposes only and should not be used for detailed analytical work. Their use should be restricted to the particular briefing board(s) they were prepared for and must be considered valid only for the reporting period as indicated by the date of issue. For information concerning these notes contact Chief, Collateral Support Division, NPIC.

GROUP 1
Excluded from automatic
downgrading and declassification

SECRET

SECRET

Approved For Release 2008/02/07 : CIA-RDP79-00849A000100030005-5 SITES

NATIONAL PHOTOGRAPHIC INTERPRETATION CENTER

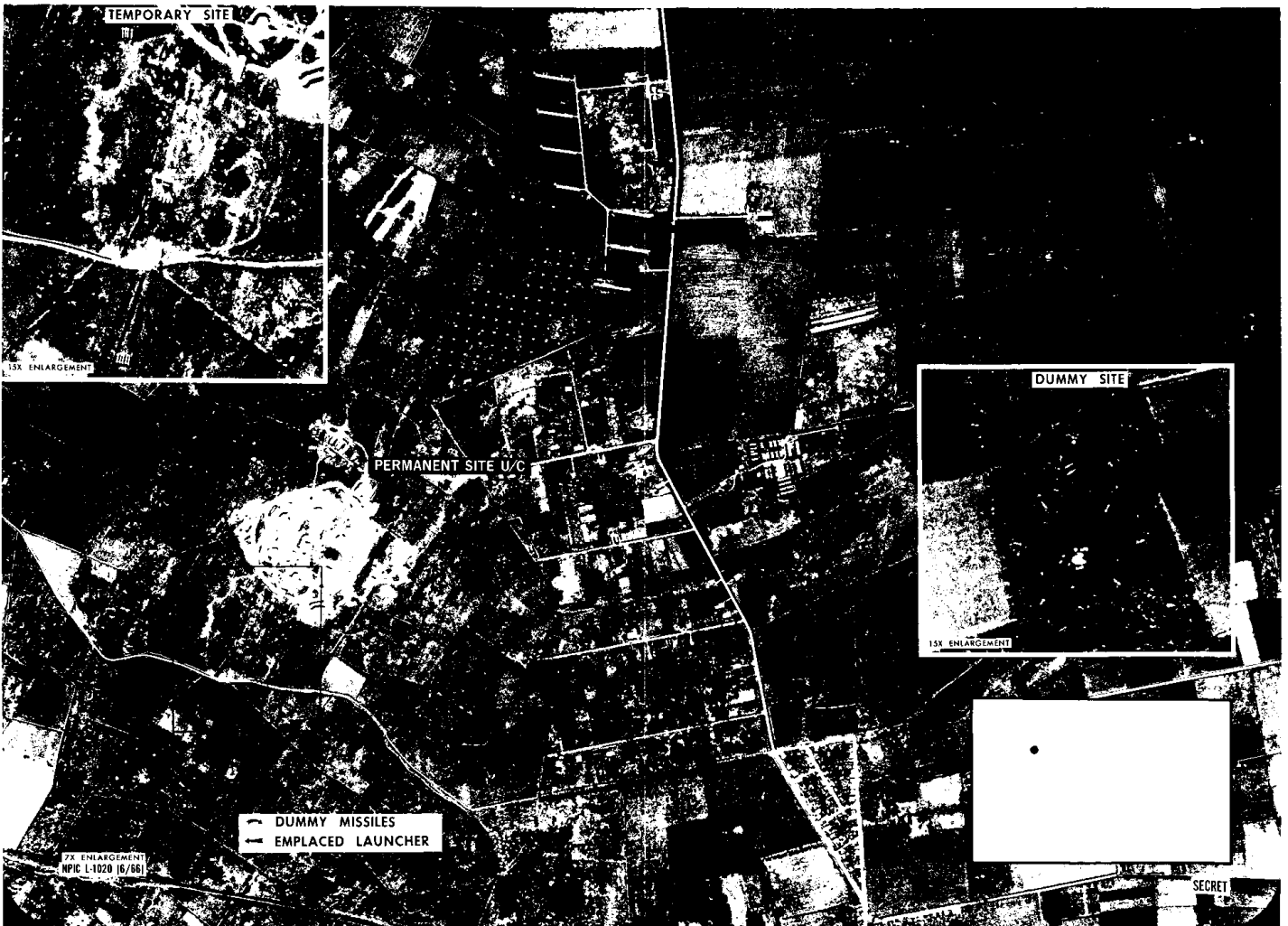
MISSION GT 8101, 14 JUNE 1966

CUBA

22-53N 082-24W



25X1



REPRODUCTION OF THIS DOCUMENT IN
WHOLE OR IN PART IS PROHIBITED
EXCEPT WITH THE PERMISSION OF THE
OFFICE OF ORIGIN.

REPRODUCTION OF THIS DOCUMENT IN
WHOLE OR IN PART IS PROHIBITED
EXCEPT WITH THE PERMISSION OF THE
OFFICE OF ORIGIN.

1021-7-70