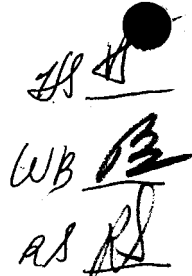




**TOP SECRET**

25X1

8 December 1964

Page 6POLONIA AIRFIELDMEDAN, INDONESIA  
0334N 9841E


  
 WB 
  
 AS 

1. COLLATERAL REPORTS POLONIA AIRFIELD LOCATED IN NORTHEAST SUMATRA, NEAR THE STRATEGIC STRAITS OF MALACCA, AND APPROXIMATELY 185 NM WEST-NORTHWEST OF KUALA LUMPUR (CAPITAL OF MALAYSIA). DUE TO ITS SUPERIOR LOGISTIC FACILITIES, JAVA HAS BEEN THE SITE OF MOST INDONESIAN AIR ACTIVITY; HOWEVER, AIRCRAFT HAVE BEEN DEPLOYED TO THE OUTER ISLANDS FOR OPERATIONAL REQUIREMENTS AND FOR PROTECTION AGAINST ANY POSSIBLE RETALIATORY BRITISH AIR STRIKES. THERE ARE USUALLY SEVERAL MIG-21 (FISHBED), IL-28 (BEAGLE), AND TU-16 (BADGER) AIRCRAFT AT POLONIA. COMINT INDICATED THREE MIG-21 AIRCRAFT LEFT FOR POLONIA FROM ISWAHJUDI AT THE END OF MARCH 1964 TO JOIN THE TWO OR THREE BADGERS AND THREE IL-28'S ALREADY DEPLOYED THERE. THE INDONESIAN AIR ORDER OF BATTLE INCLUDES 18 MIG-21 (FISHBED) (OUT OF ORIGINAL 20 DELIVERED BY THE USSR), 24 TU-16 (BADGER), AND 23 IL-28 (BEAGLE) AIRCRAFT.
2. COLLATERAL ALSO REVEALS THAT IN NOVEMBER 1963 A NEW TAXIWAY WAS REPORTED TO BE UNDER CONSTRUCTION AT THE NORTH-NORTHEAST END OF THE RUNWAY. THE TAXIWAY WAS TO EXTEND SOUTH TO A NEW HARDSTAND CAPABLE OF SUPPORTING TU-16'S.

Declass Review by NGA

25X1

**TOP SECRET**

**TOP SECRET**

25X1

8 December 1964

Page 7

THE FIRST 300 METERS OF THE SOUTH-SOUTHWEST END OF THE RUNWAY WAS CLOSED AND REHABILITATED FROM APRIL TO AUGUST 1964.

3. AIRFIELD HAS PREVIOUSLY BEEN COVERED BY TALENT PHOTOGRAPHY OF 1958 [REDACTED] REVEALED 2 BADGER, 3 BEAGLE, AND 3 POSSIBLE SMALL SWEEP-WING AIRCRAFT.

25X1

4. THIS MISSION [REDACTED] REVEALS A 7,850 X 170 FT, SERVICEABLE BLACKTOP RUNWAY, ORIENTED NNE/SSW, LOCATED ON THE SOUTH EDGE OF MEDAN. AIRCRAFT OBSERVED ARE 4 TU-16 (BADGER), 1 IL-28 (BEAGLE), AND 6 MIG-21 (FISHBED).

25X1

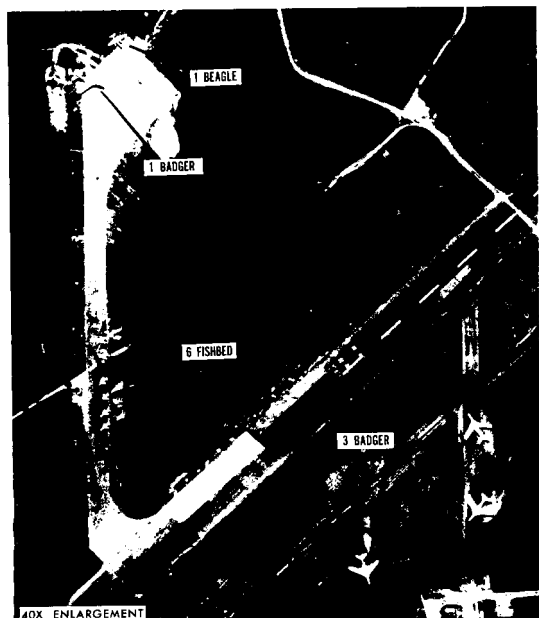
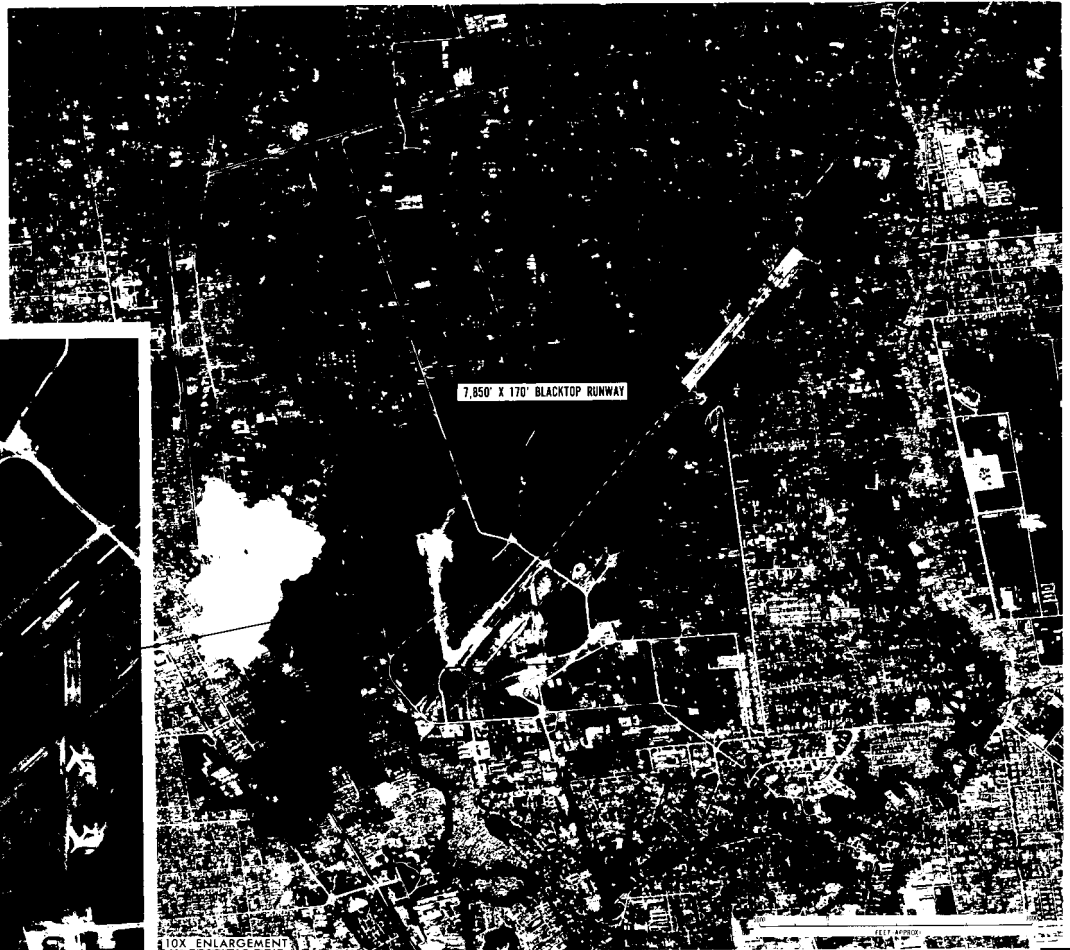
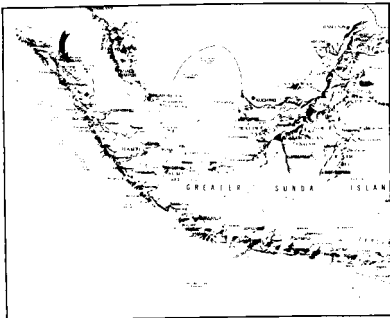
**TOP SECRET**

25X1

TOP SECRET

NATIONAL PHOTOGRAPHIC INTERPRETATION CENTER  
**POLONIA AIRFIELD**  
**MEDAN, INDONESIA**  
03-34N 98-41E

2 X1  
2 X1  
2 X1



10X ENLARGEMENT

TOP SECRET

2 X1

Control 42808  
frame 024

Approved For Release 2006/09/01 : CIA-RDP78T05929A000400010007-9

APPROVED FOR RELEASE  
IN FULL BY THE NATIONAL ARCHIVES  
ON 09-01-2006

Approved For Release 2006/09/01 : CIA-RDP78T05929A000400010007-9

REPRODUCTION OF THIS DOCUMENT IN  
ANY FORM OR BY ANY MEANS IS  
PROHIBITED WITHOUT THE WRITTEN  
PERMISSION OF THE DIRECTOR, CIA

9 DEC 1964

Approved For Release 2006/09/01 : CIA-RDP78T05929A000400010007-9