

ILLEGIB

~~TOP SECRET~~

PIIR S 10721

PHOTOGRAPHIC INTERPRETATION REPORT



SOVIET MILITARY ORDER OF BATTLE

TURKESTAN MD

Declass Review by NIMA/DOD

TCS-81219/65
SEPTEMBER 1965
COPY 4
6 PAGES

handle via **TALENT-KEYHOLE** control only

GROUP 1 EXCLUDED FROM
AUTOMATIC DOWNGRADING
AND DECLASSIFICATION

~~TOP SECRET~~

PREFACE

This report is one in a series on Soviet Ground Force and Logistic installations being prepared for a DIA/CIA Panel. The series is being coordinated, published and disseminated by NPIC. The photographic analysis is being performed by the NPIC Photographic Analysis Group, the CIA Photographic Intelligence Division (NPIC), and the Production Center 1P1a (DIA). The photographic analysis for this particular report was performed by the CIA Photographic Intelligence Division.

In the interest of uniformity, the titles and letter designators for the facilities observed at these installations are identical with those appearing in the project requirement. When a specific facility is not observed both its title and letter designator are omitted in the report.

Titles and letter designators for the various facilities are as follows: (A) railroad service, (B) road service, (C) landing strips, (D) administrative and troop housing areas, (E) storage areas, (F) ammunition storage areas, (G) POL storage areas, (H) other buildings and facilities, (J) equipment storage/maintenance areas, (K) athletic fields, (L) small arms firing ranges, (M) driver training areas, (N) tank/assault gun firing ranges, (P) flat trajectory firing ranges, (Q) artillery emplacements (batteries), (R) infantry or combined arms field training areas or courses, (S) special training facilities, (T) unidentified facilities or tracking activity.

Handle Via
TALENT-KEYHOLE
Control System Only

TOP SECRET CHESS RUFF

TCS-81219/65

MILITARY INSTALLATION
(41-31N 069-07E)
SARYAGACH, YUZHNO-KAZAKHSTANSKAYA OBLAST, USSR
TURKESTAN MD

BE No:

AL No: 25X1C [REDACTED]

COMOR No:

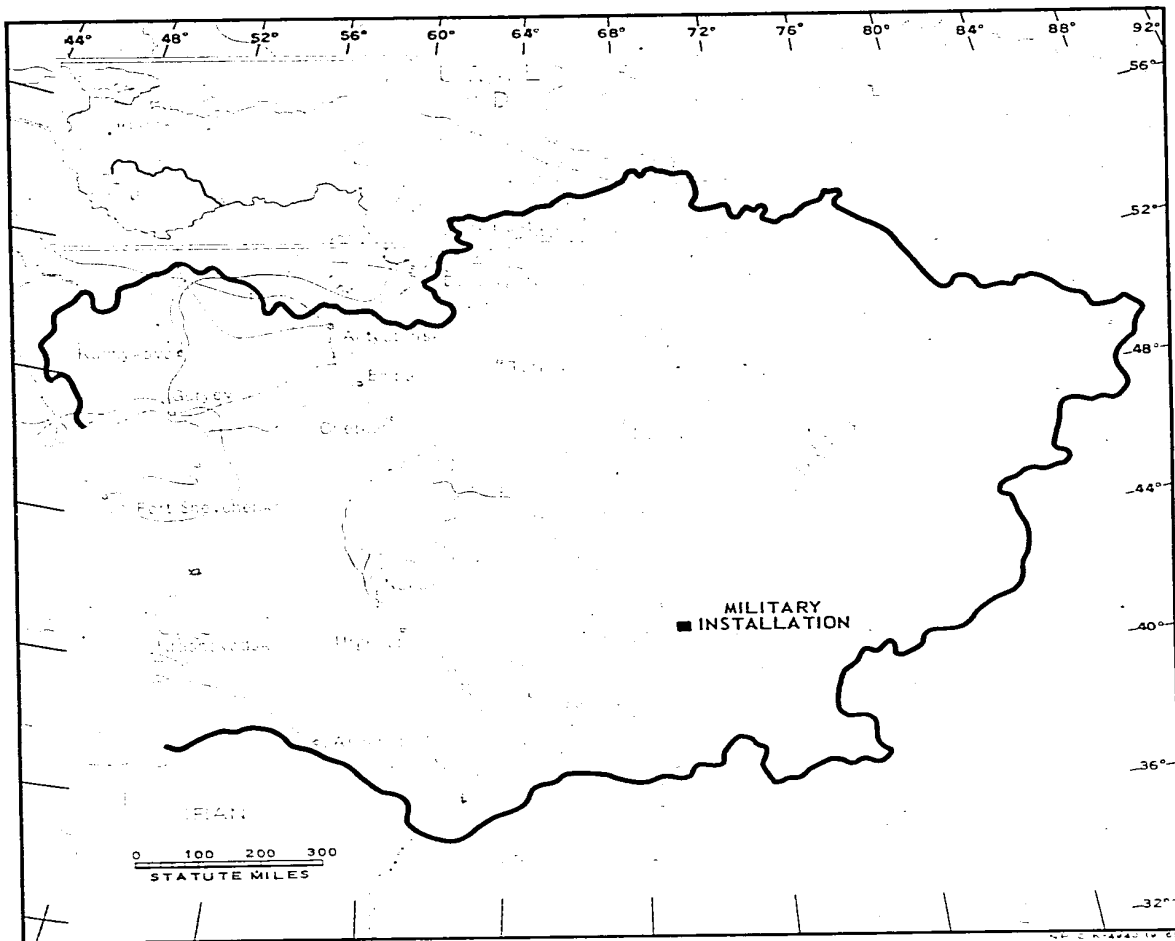


FIGURE 1. LOCATION OF MILITARY INSTALLATION.

TOP SECRET CHESS RUFF

Handle Via
TALENT-KEYHOLE
Control System Only

Handle Via
TALENT-KEYHOLE
Control System Only

TOP SECRET CHESS RUFF

TCS-81219/65

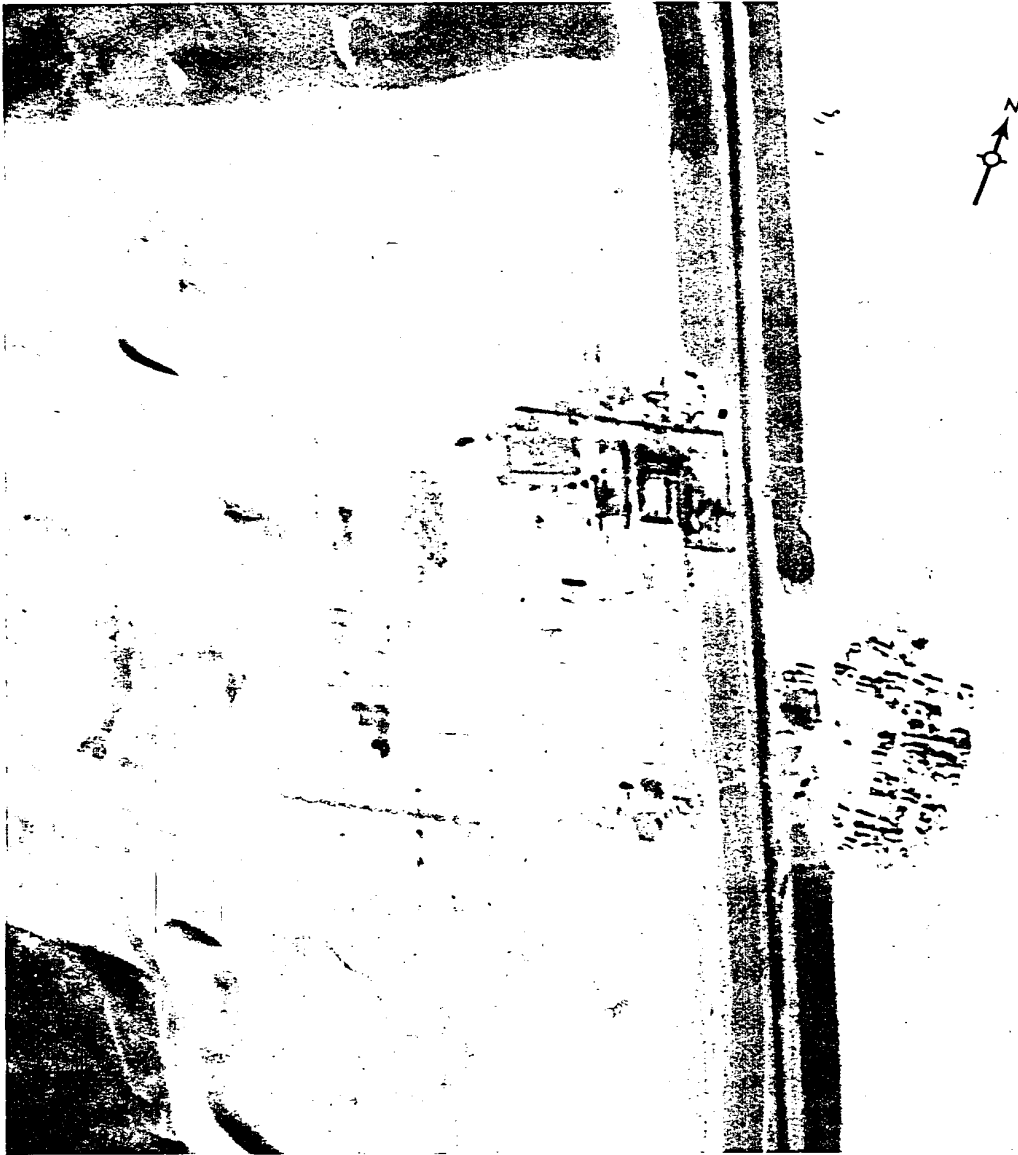


FIGURE 2. MILITARY INSTALLATION, SARYAGACH, USSR, [REDACTED]

25X1D

- 3 -

TOP SECRET CHESS RUFF

Handle Via
TALENT-KEYHOLE
Control System Only

SUMMARY

A military installation is located approximately 8 kilometers (km) north-northwest of Saryagach (Figure 1). The installation covers approximately 150 acres and contains 4 possible barracks, 2 possible vehicle storage maintenance buildings, 9 storage support buildings, a probable tent bivouac area, 2 subcaliber

flat-trajectory firing ranges, and an infantry training area (Figures 2 and 3).

The installation is covered on TALENT and KEYHOLE missions of interpretable quality between [REDACTED]

[REDACTED] Comparative analysis reveals no significant increase in activity.

25X1D
25X1D
25X1D
25X1D

DESCRIPTION OF INSTALLATION

Railroad Service

The installation is adjacent to the Tashkent-Kandagach railway.

Road Service

All-weather roads from Tashkent serve the area.

Administration and Troop Housing Area

Area D contains 4 possible barracks, 2 possible vehicle storage/maintenance buildings (200 by 30 feet and 120-by 30 feet), 8 storage support buildings, and a probable tent bivouac area.

Other Buildings

One storage/support building is located

.5 km south of Area D. Numerous small sheds are scattered throughout the area.

Flat-Trajectory Firing Ranges

Area P1 contains a 1,500-foot flat-trajectory firing range with 2 targets and 1 support shed.

Area P2 is a 1,500-foot flat-trajectory firing range with 2 targets.

Infantry or Combined-Arms Field-Training Area or Courses

Area R, located immediately across the rail line and east of Area D, is an infantry area containing numerous trenches.

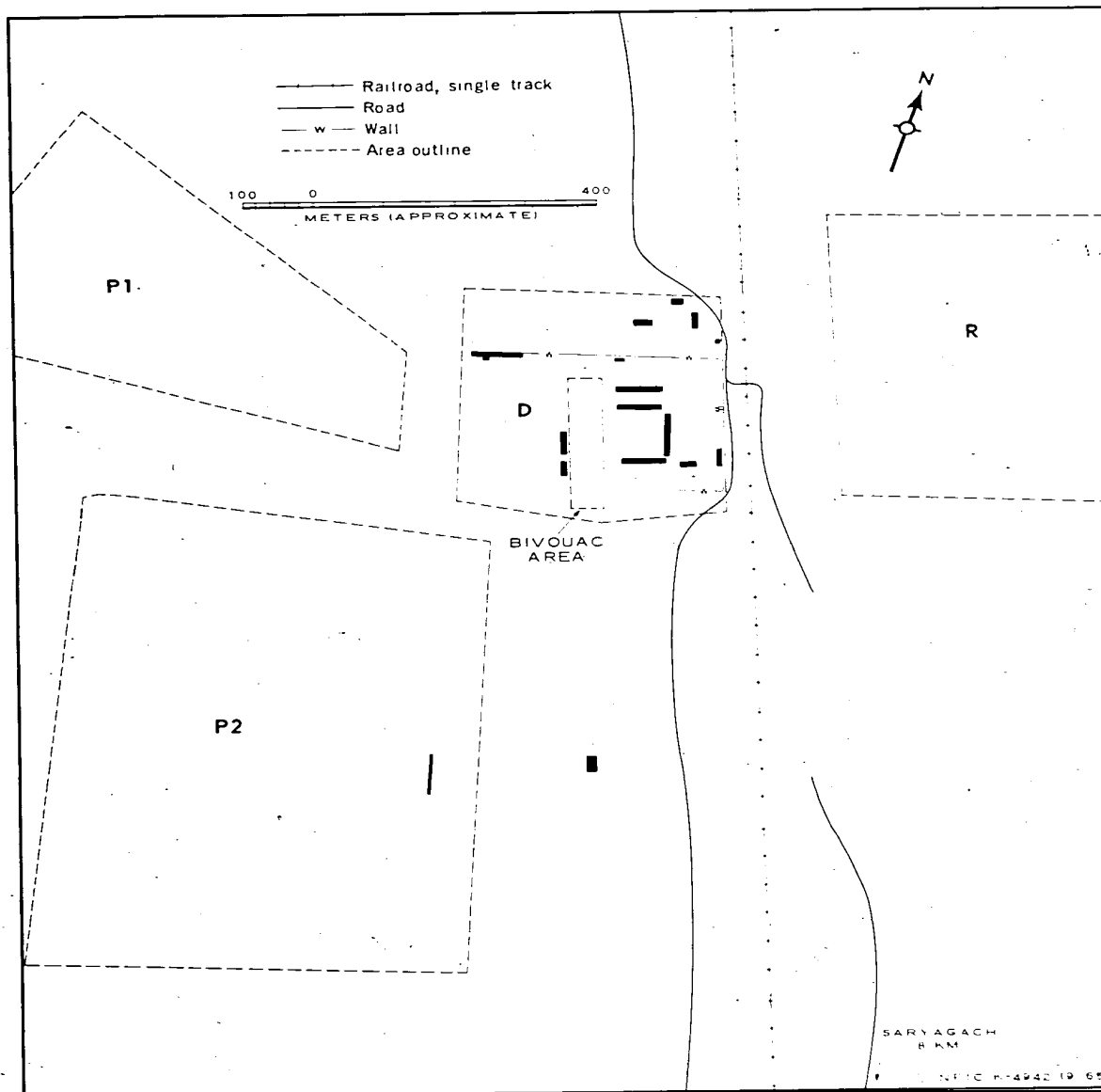


FIGURE 3. MILITARY INSTALLATION. Sketch compiled from

25X1D

25X1D

Handle Via
TALENT-KEYHOLE
Control System Only

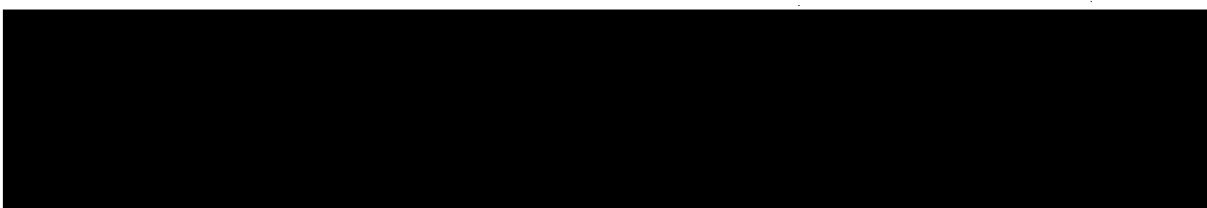
TOP SECRET CHESS RUFF

TCS-81219/65

REFERENCES

PHOTOGRAPHY

25X1D



MAPS OR CHARTS

US Air Target Chart, Series 200, Sheet 0328-17AL, 2d ed, May 61 (SECRET)

DOCUMENTS

25X1C

Army, PIR-1-59, *Military Training Area Sarygach*, Jun 59 (TOP SECRET CHESS)



REQUIREMENT

C-RR4-81.615 (partial answer)

NPIC PROJECT

11908 64

TOP SECRET

S-	10791
int/	date
IND	YRP
	2 Nov
	22 Dec 65
RELEASED	

TOP SECRET