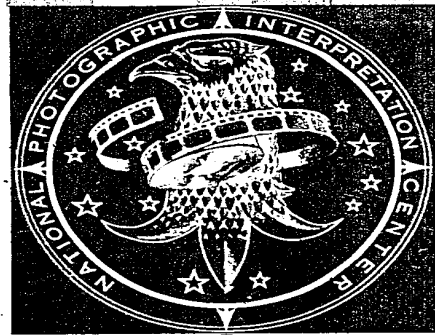


TOP SECRET



PHOTOGRAPHIC INTERPRETATION REPORT



**MISSION 4022
I - 4 OCTOBER 1965**

PART II

[Redacted]

25X1

OCTOBER 1965

COPY 12

61 PAGES

[Redacted]

25X1

GROUP 1 EXCLUDED FROM AUTOMATIC DOWNGRADING AND DECLASSIFICATION

TOP SECRET



TOP SECRET CHESS RUFF
MISSION 4022 1-4 OCT 65



25X1
25X1

TABLE OF CONTENTS

PREFACE	2
TRACK OF MISSION	3
HIGHLIGHTS	7
MISSILES	9
AIR FACILITIES	19
NUCLEAR ENERGY	21
NAVAL ACTIVITY/PORTS	26
BIOLOGICAL/CHEMICAL WARFARE	29
ELECTRONICS/COMMUNICATIONS	32
MILITARY ACTIVITY	34
COMPLEXES	39
OTHER ACTIVITY	42
ATTACHMENTS	

APPENDIX



25X1

TOP SECRET CHESS RUFF
MISSION 4022 1-4 OCT 65

25X1

OAK PART II
MISSION 4022

PREFACE

THIS IS THE SECOND OF THREE OAK REPORTS ON MISSION 4022 AND PROVIDES INFORMATION ON THOSE COMMITTEE ON OVERHEAD RECONNAISSANCE (COMOR) TARGETS OBSERVED ON THE PHOTOGRAPHY.

TARGETS ARE ARRANGED IN THE OAK BY SUBJECT AND WITHIN EACH SUBJECT BY COMOR TARGET NUMBER. TARGETS OF OPPORTUNITY OBSERVED DURING THE OAK REPORTING PERIOD ARE LISTED NUMERICALLY UNDER THE APPROPRIATE SUBJECT AFTER THE LISTING OF COMOR TARGETS. LOCATIONS OF TARGETS IN THIS REPORT ARE INDICATED BY THE COUNTRY CODE PRECEDING THE COORDINATES.

SELECTED PHOTOGRAPHIC REFERENCES FOR EACH TARGET OBSERVED AND REPORTED FOLLOW THE DESCRIPTION OF THE TARGET. PASS NUMBERS ARE SUFFIXED WITH THE LETTER D FOR DESCENDING (NORTH-TO-SOUTH). FRAMES ARE INDICATED BY THE FRAME NUMBER WITH AN INDEX NUMBER RUNNING CONSECUTIVELY FROM THE BEGINNING OF EACH PASS -- 4/8 FOR EXAMPLE, MEANS FRAME 4, INDEX 8. UNIVERSAL REFERENCE GRID (X-Y) COORDINATES ARE GIVEN IN PARENTHESIS AFTER THE INDEX NUMBER TO WHICH THEY APPLY. THIS GRID IS IDENTIFIED AS UNIVERSAL GRID NO 1, FEB 64. SYMBOLS INDICATING CONDITIONS WHICH AFFECT THE APPEARANCE OF THE TARGET ON THE PHOTOGRAPHY ARE -- C (CLEAR), SC (SCATTERED CLOUDS), HC (HEAVY CLOUDS), H (HAZE), CS (CLOUD SHADOW), S (SNOW), O (OBLIQUITY), SD (SEMIDARKNESS), GC (GROUND COVER), CF (CAMOUFLAGE), AND GR (GROUND RESOLUTION).

INTERPRETABILITY OF THE PHOTOGRAPHY IS CATEGORIZED AS G (GOOD), F (FAIR), OR P (POOR). THE EXTENT OF PHOTOGRAPHIC COVERAGE IS DENOTED BY THE SYMBOLS T (TOTAL) OR PT (PARTIAL). THE MODE OF COVERAGE IS INDICATED BY ST (STEREO), NS (NON-STEREO), OR PS (PARTIAL STEREO).

OAK RECIPIENTS ARE CAUTIONED THAT THE INITIAL SCAN OF THE PHOTOGRAPHY IS BEING ACCOMPLISHED IN A SHORT TIME AND PRIOR TO FINAL REFINEMENT OF EPHEMERIS DATA. CONSEQUENTLY, FUTURE DETAILED ANALYSIS MAY RESULT IN MINOR ALTERATIONS.

TOP SECRET CHESS RUFF

25X1

Page Denied

Next 2 Page(s) In Document Denied

Highlights

Page Denied




TOP SECRET CHESS RUFF
MISSION 4022 1-4 OCT 65



25X1

HIGHLIGHTS

1. UGOLNYY MRBM LAUNCH SITE 

25X1

TEN PROBABLE SCAMP ARE OBSERVED ON THE SITE ROAD NETWORK.


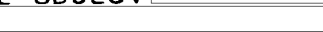
2. SOFIYE-ALEKSEYEVSKOYE FIXED FLD MRBM SITE 

25X1

TWO OF THE POSITIONS APPEAR TO HAVE FIRING RINGS IN THE CENTER OF EACH POSITION. WHEEL CHOCK MARKS OBSERVED.

3. PEIPING MISSILE DEV CTR CHANG-HSIN-TIEN 

25X1

A TAPERED CYLINDRICAL OBJECT  AT THE LARGE END AND  AT THE SMALL END IS LOCATED IN THE INDUSTRIAL/R&D AREA. THE AREA OF CONSTRUCTION AT THE NORTH END OF THE TEST FACILITY IS IDENTIFIED AS A POSSIBLE PROPELLANT PRODUCTION AREA.

25X1

25X1

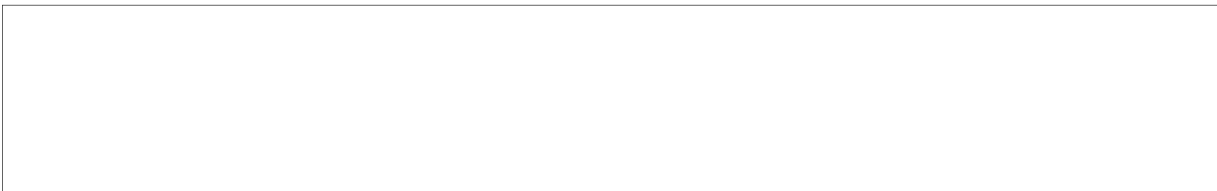
4. YU-LIN COASTAL DEFENSE AND RADAR SITE 

25X1

INSTALLATION INCLUDES TWO 4-POSITION COASTAL DEFENSE FACILITIES. THE WESTERN SITE IS NEARING COMPLETION AND THE EASTERN SITE IS IN A MID-STAGE OF CONSTRUCTION.

5. AYAGUZ SAM SUPPORT FACILITY (MISSILE BONUS)

LOCATED 2.4 NM WEST OF AYAGUZ AT 47-57-45N 080-22-30E, THIS TYPE II SAM SUPPORT FACILITY IS UNDER CONSTRUCTION.



25X1

7. GURYEV TALL KING - AW RADAR FACILITY (ELECTRONICS BONUS)

LOCATED 3 NM NORTHWEST OF GURYEV, THIS SINGLE SECURED FACILITY CONTAINS 1 TALL KING ANTENNA. AN AW RADAR FACILITY IS LOCATED 1,000 FT SE OF THE TALL KING AND CONTAINS 1 BIG MESH RADAR AND 1 HEIGHT FINDER RADAR.



25X1



TOP SECRET CHESS RUFF
MISSION 4022 1-4 OCT 65



25X1
25X1


8. BANK TALL KING - AW RADAR FACILITY (ELECTRONICS BONUS)

THIS SINGLE-SECURED FACILITY CONTAINING 1 TALL KING ANTENNA IS LOCATED 2.5 NM NE OF BANK. A SEPARATELY SECURED AW RADAR FACILITY IS LOCATED 1.000 FT NE OF THE TALL KING.

9. KA-ERH-MU ARMY GENERAL SUPPLY DEPOT 

TWENTY FIELD ARTILLERY GUNS, 19 AAA GUNS, 8 POSSIBLE ARMORED PERSONNEL CARRIERS, AND APPROXIMATELY 1,150 CARGO TRUCKS OBSERVED.

25X1

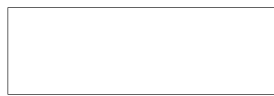
10. MAYKOP ARMY BARRACKS SOUTH 

THIRTY CANVAS-COVERED TANKS, 59 TANKS/SP GUNS, 20 APC, 10 TRACKED VEHICLES, 6 TRACTOR-TRAILER TRUCKS, 82 CARGO TRUCKS, 7 VAN TRUCKS, 7 UTILITY TRUCKS, 13 TRUCKS, 17 UNIDENTIFIED VEHICLES, 4 PROBABLE CARGO TRAILERS, 53 VEHICLES/PIECES OF EQUIPMENT, 72 FA PIECES AND 50 AAA PIECES ARE OBSERVED.

25X1

STATUS OF COMOR TARGET READOUT

ONE-HUNDRED-ONE COMOR TARGETS WERE OBSERVED DURING THE OAK REPORTING PERIOD AND ARE REPORTED IN THIS OAK.



25X1

Missiles



TOP SECRET CHESH RUFF
MISSION 4022 1-4 OCT 65



25X1

MISSILES

SOFIYE-ALEKSEYEVSKOYE MRBM LAUNCH SITE UR 4415N 13123E

25X1

NO MISSILES, MISSILE-RELATED EQUIPMENT, OR CHANGES NOTED IN LAUNCH AREA. AN ERECTOR IS OBSERVED ON EACH PAD. VEHICLES ARE NOTED THROUGHOUT THE SITE SUPPORT FACILITY.



25X1

DECEPTION IN THE FORM OF A WHITE LINE ALONG RIDGE OF ROOF OF BOTH READY BUILDINGS NOTED.



25X1

BARANO-ORENBURGSKOYE MRBM LAUNCH SITE UR 4419N 13130E

NO MISSILES, MISSILE-RELATED EQUIPMENT OR NEW CONSTRUCTION OBSERVED AT SITE OR IN THE SUPPORT AREA.

VEHICLES ARE PARKED IN SITE SUPPORT FACILITY.



25X1
25X1

DECEPTION IN THE FORM OF A WHITE LINE ALONG RIDGE OF ROOF OF BOTH READY BUILDINGS OBSERVED.



25X1

KAMENETS-PODOLSKIY MRBM LAUNCH SITE 1 UR 4851N 02642E

NO MISSILES OBSERVED. THERE IS AN ERECTOR ON EACH LAUNCH PAD, 2 POSSIBLE VEHICLES

7 LARGE AND 1 SMALL VEHICLE IN THE TECHNICAL SECTION, 5 LARGE AND APPROXIMATELY 30 SMALL VEHICLES IN VEHICLE MAINTENANCE AND STORAGE SECTION AND APPROXIMATELY 6 SMALL VEHICLES AT THE SITE SUPPORT FACILITY.

A 6-TANK CASCADE AND A 3-TANK CASCADE OBSERVED IN THE TECHNICAL SECTION.



25X1
25X1

25X1

TOP SECRET CHESH RUFF



25X1



TOP SECRET CHESS RUFF
MISSION 4022 1-4 OCT 65



25X1

OSTROG MRBM LAUNCH SITE 1

UR 5014N 02644E

25X1

ONLY A PORTION OF THE SITE SUPPORT FACILITY OBSERVED. NO MISSILES, MISSILE-RELATED EQUIPMENT, NEW CONSTRUCTION, NEW FEATURES, OR CHANGES IN FACILITIES OBSERVED.



25X1

BORKHOV MRBM LAUNCH SITE 1

UR 5218N 03043E

NO MISSILES OBSERVED. ERECTOR PRESENT ON 1 LAUNCH PAD, 12 SMALL VEHICLES NEAR VEHICLE MAINTENANCE AND STORAGE BUILDING, AND 4 SMALL VEHICLES AT SITE SUPPORT FACILITY.

TWO LARGE AND 5 SMALL PROBABLE BURIED TANKS IN SITE SUPPORT FACILITY, 1 CASCADE OF 6 LARGE TANKS AND 1 CASCADE OF 3 SMALL TANKS PRESENT IN TECHNICAL SECTION.



25X1

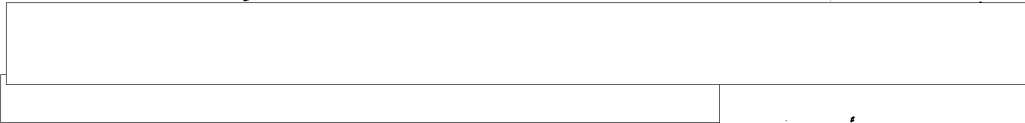
25X1

TORVA MRBM LAUNCH SITE 1

UR 5756N 02604E

NO MISSILES OBSERVED. NO ERECTORS ON LAUNCH PADS. FIVE VEHICLES IN VEHICLE MAINTENANCE AND STORAGE SECTION.

NO NEW CONSTRUCTION, CHANGES IN FACILITIES, OR NEW FEATURES OBSERVED.



25X1

25X1

UGOLNYY MRBM LAUNCH SITE

UR 6446N 17758E

NO APPARENT CHANGE IN PERMANENT FACILITIES. THREE BUILDINGS ARE BEING CONSTRUCTED EAST OF THE SITE SUPPORT FACILITY. AN ERECTOR IS ON EACH OF THE 4 LAUNCH PADS. TEN PROBABLE SCAMP ARE OBSERVED ON THE SITE ROAD NETWORK. APPROXIMATELY 50 VEHICLES/ PIECES

25X1





TOP SECRET CHESS RUFF
MISSION 4022 1-4 OCT 65



25X1

OF EQUIPMENT ARE DISCERNIBLE IN THE SITE SUPPORT FACILITY AND APPROXIMATELY 15 VANS ARE



25X1
25X1

(SEE ATTACHMENT)



25X1
25X1

KURDZHIPS KAYA MRBM LAUNCH SITE

UR 4431N 04000E

NO MISSILES OBSERVED. ONE ERECTOR, 1 FUEL TRAILER WITH PRIME MOVER, 2 OXIDIZER TRAILERS WITH PRIME MOVERS AND 6 UNIDENTIFIED VEHICLES ON WEST LAUNCH PAD. ONE ERECTOR ON EACH OF 2 EASTERMOST LAUNCH PADS. AND 13 UNIDENTIFIED VEHICLES IN TECHNICAL SECTION.

NO NEW CONSTRUCTION OR CHANGES IN FACILITIES.



25X1
25X1

25X1

KAMENNY MOST IRBM LAUNCH SITE

UR 4758N 03053E

NO MISSILES OBSERVED. 1 LARGE AND 11 SMALL VEHICLES. SCATTERED ABOUT THE SITE.

BUILDING-LIKE STRUCTURES REMAIN OVER ALL THREE SILOS.



25X1
25X1

SEMENOVKA IRBM LAUNCH SITE 1

UR 4758N 03059E

NO MISSILES OBSERVED. APPROXIMATELY 20 VEHICLES OF VARYING SIZES IN SITE SUPPORT FACILITY, ONE LARGE, 3 SMALL AND 7 LARGE POSSIBLE VEHICLES/ROWS OF EQUIPMENT IN LAUNCH SITE. A BUILDING-LIKE STRUCTURE REMAINS OVER EACH SILO.



25X1

25X1

11

TOP SECRET CHESS RUFF



25X1

TOP SECRET CHESS RUFF
MISSION 4022 1-4 OCT 65

SHIRVANSKAYA MRBM LAUNCH SITE

UR 4425N 03954E

NO MISSILES OR MISSILE-RELATED EQUIPMENT OBSERVED. NO
NEW CONSTRUCTION OR CHANGES IN FACILITIES OBSERVED.

[REDACTED]

TSIRGULIINA MRBM LAUNCH SITE

UR 5749N 02612E

NO MISSILES OR MISSILE-RELATED EQUIPMENT OBSERVED.
FIVE UNIDENTIFIED VEHICLES OBSERVED IN TECHNICAL
SECTION. ONE UNIDENTIFIED VEHICLE IN SITE SUPPORT
FACILITY. NO NEW CONSTRUCTION. A UNIDENTIFIED
RECTANGULAR OBJECT IS OBSERVED IMMEDIATELY WEST OF THE
SITE SUPPORT FACILITY.

[REDACTED]

[REDACTED]

SEMENOVKA IRBM LAUNCH SITE 2

UR 4753N 03057E

NO MISSILES OBSERVED. EIGHT SMALL VEHICLES VISIBLE IN
SITE SUPPORT FACILITY, 5 UNIDENTIFIED PIECES OF
EQUIPMENT IN LAUNCH SITE, A DARK, UNIDENTIFIED OBJECT
IS VISIBLE ON THE LOOP ROAD IN FRONT OF ONE OF THE
SILOS. A BUILDING-LIKE STRUCTURE REMAINS OVER EACH
SILO COVER.

[REDACTED]

RAMOYE IRBM LAUNCH SITE

UR 6426N 03418E

ONLY A SMALL PORTION OF THE LAUNCH AREA OBSERVED.

NO NEW CONSTRUCTION, MISSILES, OR MISSILE-RELATED
EQUIPMENT OBSERVED IN CLOUD-FREE AREAS.

[REDACTED]

[REDACTED]

25X1

25X1

25X1

25X1

25X1

25X1

25X1

25X1

25X1

TOP SECRET CHESS RUFF
MISSION 4022 1-4 OCT 65

SLAVUTA FIXED FIELD MRBM SITE

UR 5016N 02657E

NO MISSILES OBSERVED. THERE IS A SMALL UNIDENTIFIED OBJECT ON 1 OF THE LAUNCH POSITIONS. ANOTHER LAUNCH POSITION HAS A SMALL CIRCULAR EXCAVATION AND SHORT LONGITUDINAL SCARS POSSIBLY INDICATING EMPLACEMENT OF A LAUNCH RING AND WHEEL CHOCKS. AN ASSOCIATED CLEARING ALSO HAS A SMALL UNIDENTIFIED OBJECT PRESENT.

SHEPETOVKA FIXED FIELD MRBM SITE

UR 5012N 02659E

NO MISSILES, MISSILE-RELATED EQUIPMENT, NEW CONSTRUCTION, NEW FEATURES, OR CHANGES IN FACILITIES OBSERVED. SITE SHOWS NO ACTIVITY.

VALGA FIXED FIELD MRBM SITE 1

UR 5750N 02554E

NO MISSILES OR MISSILE-RELATED EQUIPMENT OBSERVED. NO NEW CONSTRUCTION OR CHANGES IN EXISTING FACILITIES.

SOFIYE-ALEKSEYEVSKOYE FIXED FLD MRBM SITE UR 4411N 13124E

NO NEW CONSTRUCTION OR SIGNIFICANT CHANGES OBSERVED.

TWO OF THE POSITIONS APPEAR TO HAVE FIRING RINGS IN THE CENTER OF EACH POSITION. WHEEL CHOCK MARKS OBSERVED.

VALGA FIXED FIELD MRBM SITE 2

UR 5755N 02546E

NO MISSILES OR MISSILE-RELATED EQUIPMENT OBSERVED. A SMALL HORSESHOE-SHAPED REVETMENT FOR PERSONNEL/SMALL VEHICLES OBSERVED IN THE CENTER OF A CLEARED AREA ADJACENT TO 1 OF THE LAUNCH POSITIONS.

25X1

25X1

25X1

25X1

25X1

25X1

25X1

25X1

TOP SECRET CHESS RUFF
MISSION 4022 1-4 OCT 65

GOMEL FIXED FIELD MRBM SITE 2

UR 5224N 03050E

NO MISSILES OR MISSILE-RELATED EQUIPMENT, CONSTRUCTION ACTIVITY, OR CHANGES IN FACILITIES OBSERVED. SITE APPEARS INACTIVE.

SHUANG-CHENG-TZU MISSILE TEST CENTER

CH 4107N 10020E

A NEW RAILBED IS UNDER CONSTRUCTION FROM THE RAIL-LINE LEADING TO THE REVETTED STORAGE AREA TOWARD THE SSM LAUNCH FACILITIES. THIS RAILBED ROUGHLY PARALLELS THE EXISTING ROAD.

CONSTRUCTION IS CONTINUING AT LAUNCH COMPLEX B. IN ADDITION TO THE 3 STRUCTURES (REPORTED AS PROBABLE STRUCTURES) THERE ARE 3 ADDITIONAL STRUCTURES AND 3 FOUNDATIONS AND CONSIDERABLE CONSTRUCTION SCARRING.

APPROXIMATELY 12 VEHICLES ARE IN THE SSM HOUSING AND SUPPORT AREA. THERE ARE AT LEAST 6 ADDITIONAL VEHICLES ON THE MAIN ROAD SERVICING THE SSM LAUNCH FACILITIES.

SAM SEARCH -- WITHIN THE 50-NM-RADIUS SEARCH AREA ONLY 2 PORTIONS ARE COVERED BY PHOTOGRAPHY. ONE PORTION, 3 NM NW OF 41-07N 100-20E, COVERS APPROXIMATELY 30 NM N-S AND 17 NM SE-NW. THE OTHER PORTION, 35 NM SSW OF 41-07N 100-20E, COVERS APPROXIMATELY 15 NM N-S AND APPROXIMATELY 5 NM SE-NW.

NO NEW MISSILE ACTIVITY OBSERVED IN THE CLOUD-FREE AREAS COVERED BY PHOTOGRAPHY.

(SEE ATTACHMENT).

SHUANG-CHENG-TZU LAUNCH COMPLEX A (SITE 1) CH 4114N 10017E

NO MISSILES OR MISSILE-RELATED EQUIPMENT OBSERVED. NO APPARENT CHANGE IN FACILITIES

25X1

25X1

25X1

25X1

25X1

25X1

25X1

25X1

25X1

25X1



TOP SECRET CHESS RUFF
MISSION 4022 1-4 OCT 65



25X1

SHUANG-CHENG-TZU LAUNCH COMPLEX C (SITE 3) CH 4118N 10018E

THREE UNIDENTIFIED VEHICLES ARE IN THE LAUNCH AREA AND 2 UNIDENTIFIED VEHICLES/PIECES OF EQUIPMENT ARE IN THE FINAL ASSEMBLY AND CHECKOUT AREA. THE POSSIBLE BUILDING OR EARTH MOUND REPORTED ON [REDACTED] IS NOW IDENTIFIED AS A BUILDING.

25X1

25X1

25X1

NO MISSILES, NEW CONSTRUCTION OR CHANGES IN FACILITIES OBSERVED.



25X1

EMBA MSL TEST CENTER LAUNCH AREA

UR 4831N 05801E

THE EMBA MISSILE TEST CENTER IS MOSTLY OBSCURED BY HEAVY CLOUDS. ONLY A SMALL PORTION OF THE LAUNCH AREA IS VISIBLE. A SMALL SQUARE HARDSTAND HAS BEEN CONSTRUCTED APPROXIMATELY 200 FT WEST OF THE WEST LAUNCH PAD (PAD A-1). AN UNIDENTIFIED OBJECT IS ON THE HARDSTAND. THE HARDSTAND HAS BEEN CONSTRUCTED SINCE [REDACTED]

25X1

NO MISSILES OR MISSILE-RELATED EQUIPMENT OBSERVED.



25X1

PEIPING MISSILE DEV CTR CHANG-HSIN-TIEN

CH 3950N 11608E

A TAPERED CYLINDRICAL OBJECT [REDACTED] DIAMETER AT THE LARGE END AND [REDACTED] AT THE SMALL END IS LOCATED NEAR A RAIL SPUR IN AN OPEN STORAGE YARD OF THE INDUSTRIAL/R&D AREA SITUATED IMMEDIATELY SOUTH OF THE ROCKET ENGINE TEST FACILITY.

25X1

25X1

THE AREA OF CONTINUING CONSTRUCTION AT THE NORTH END OF THE TEST FACILITY IS IDENTIFIED AS A POSSIBLE PROPELLANT PRODUCTION AREA UNDER CONSTRUCTION CONTAINING 2 PRODUCTION BUILDINGS, 2 STORAGE TANKS, AND A SMALL STRUCTURE INTERCONNECTED BY DITCHING FOR UNDERGROUND PIPELINES. CONTAMINANT STAINS ARE VISIBLE IN THE SUMPS OF THE 3 VERTICAL TEST STANDS, AND 3 RAIL CARS AND A PROBABLE SWITCH ENGINE ARE POSITIONED NEAR THE MIDDLE TEST STAND. THE COMPONENTS TEST AREA, LOCATED EAST OF TEST STANDS, CONTAINS A SINGLE POSITION TEST BUILDING. NO OTHER SIGNIFICANT CHANGES OR FEATURES OBSERVED.

25X1





TOP SECRET CHESS RUFF
MISSION 4022 1-4 OCT 65



25X1

(SEE ATTACHMENT)



25X1

VOLGOGRAD ORD & MUN PLT KRASNYY BARRIKADA UR 4846N 04435E

25X1

A LARGE, HIGH BAY ASSEMBLY-TYPE BUILDING WHICH WAS OBSERVED IN THE EARLY STAGES OF CONSTRUCTION [REDACTED] APPEARS COMPLETE. A SMALL BUILDING, WHICH IS CONNECTED TO THE LARGE BUILDING BY A CONVEYOR OR OVERHEAD PASSAGEWAY HAS BEEN ADDED. NO MISSILE COMPONENTS OR MISSILES ARE IDENTIFIABLE.

25X1

25X1

AN UNDETERMINED NUMBER OF VEHICLES ARE PARKED IN THE SHIPPING YARD.



25X1

KOMSOMOLSK SHIPYARD AMUR 199 UR 5033N 13702E

CONSTRUCTION CONTINUES ON NEW LAUNCHING/TRANSVERSER SYSTEM LOCATED ON NORTHWEST SIDE OF MAIN BASIN. CONSTRUCTION IS UNDERWAY ON A NEW POSSIBLE FABRICATION BUILDING IN SOUTHWESTERNMOST AREA OF SHIPYARD. FOOTINGS FOR AN ADDITIONAL NEW BUILDING ARE ALSO VISIBLE IN THIS AREA.

VESSELS -- 1 E-II-CLASS SSGN, 1 PROBABLE KRUPNYY-CLASS DD HULL, 1 AMGUEMA-CLASS CARGO ICEBREAKER, AND SEVERAL BARGES BERTHED ALONG MAIN FITTING-OUT PIER. SEVERAL UNIDENTIFIED SMALL VESSELS ARE NEAR FITTING-OUT QUAY AND 1 UNIDENTIFIED CRAFT IS IN LAUNCH BASIN.

(SEE ATTACHMENT).



25X1

MOSCOW SUSPECT ABM AREA UR 5545N 03737E

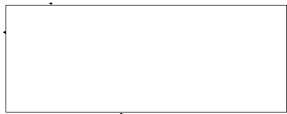
NO NEW SARY-SHAGAN OR LENINGRAD-TYPE INSTALLATIONS, ELECTRONIC FACILITIES, [REDACTED]

25X1

25X1



REMAINDER OF SEARCH AREA NOT COVERED.



25X1



TOP SECRET CHESS RUFF
MISSION 4022 1-4 OCT 65



25X1



25X1

BAKU SAM SITE B10-3

UR 4022N 05007E

25X1

THE 4 REVETTED LAUNCH POSITIONS ARE EACH OCCUPIED BY CANVAS-COVERED LAUNCHERS, CENTRAL GUIDANCE AREA IS OCCUPIED BY A LOW BLOW GUIDANCE RADAR, AN ACQUISITION RADAR MOUND (PROBABLY OCCUPIED) IS AT NW EDGE OF SITE, HOLD REVETMENT IS OCCUPIED BY 5 UNIDENTIFIED VANS/VEHICLES, 4 SETS OF BOGIE WHEELS ARE LOCATED IN THE SW PORTION OF THE SITE, 5 HORIZONTAL TANKS OF UNIDENTIFIED FUNCTION ARE OBSERVED IN A REVETMENT ADJACENT TO THE EAST EDGE OF THE SITE SECURITY WALL, AND AT LEAST 3 OTHER VEHICLES/PIECES OF EQUIPMENT ARE OBSERVED AT THE SITE.



25X1

SEVERODVINSK SAM SITE B02-3

UR 6446N 03959E

IDENTIFICATION ONLY.



25X1

DALNYAYA SAM SITE A36-2

UR 4555N 14204E

OBLIQUITY AND POOR PHOTOGRAPHY PRECLUDE IDENTIFICATION OF THE FAN SONG MODEL AND ANY ADDITIONAL RADARS IN THE AREA.



25X1

GUANABO CRUISE MISSILE SITE

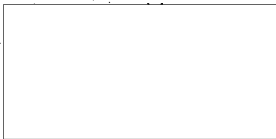
CU 2309N 08203W

SITE CONSISTS OF 2 OCCUPIED UNRETTED LAUNCH POSITIONS, 2 UNOCCUPIED REVETTED LAUNCH POSITIONS (APPARENTLY INACTIVE), AND A GUIDANCE AREA CONTAINING APPROXIMATELY 4 RADARS AND 3 PROBABLE ELECTRONIC VANS.

A SUPPORT AREA CONTAINING APPROXIMATELY 7 BUILDINGS IS LOCATED 0.5 NM NORTH OF THE LAUNCH POSITIONS.



25X1



25X1



TOP SECRET CHESS RUFF
MISSION- 4022 1-4 OCT 65



25X1
ZVAI

YU-LIN COASTAL DEFENSE AND RADAR SITE CH 1811N 10929E

25X1

INSTALLATION INCLUDES TWO 4-POSITION COASTAL DEFENSE FACILITIES. THE WESTERN SITE IS NEARING COMPLETION AND THE EASTERN SITE IS IN A MID-STAGE OF CONSTRUCTION. THE WESTERN SITE HAS AN UNIDENTIFIED OBJECT IN PLACE ON EACH PAD. EACH DEFENSE POSITION OF THE EASTERN SITE IS LOCATED DIRECTLY IN FRONT OF AN UNDERGROUND ENTRANCE. FOUR PROBABLE MAINTENANCE/SUPPORT BUILDINGS ARE IN THE AREA.

DIRECTLY BEHIND THE SITES, ON TOP OF A HILL, IS A PROBABLE RADAR SITE CONTAINING 3 OCCUPIED, SEPARATELY LOCATED, PROBABLE RADARS. A 4-GUN AAA SITE (2 POSITIONS OCCUPIED) IS LOCATED WEST OF THE RADAR SITE. A SUPPORT BUILDING IS ADJACENT TO THE AAA SITE. A SUPPORT AREA WITH APPROXIMATELY 25 BUILDINGS IS LOCATED WEST OF THE RADAR SITE.



25X1
25X1

AYAGUZ SAM SUPPORT FACILITY UR 4757N 08022E BONUS 1

2.4 NM WEST OF AYAGUZ AT 47-57-45N 080-22-30E.

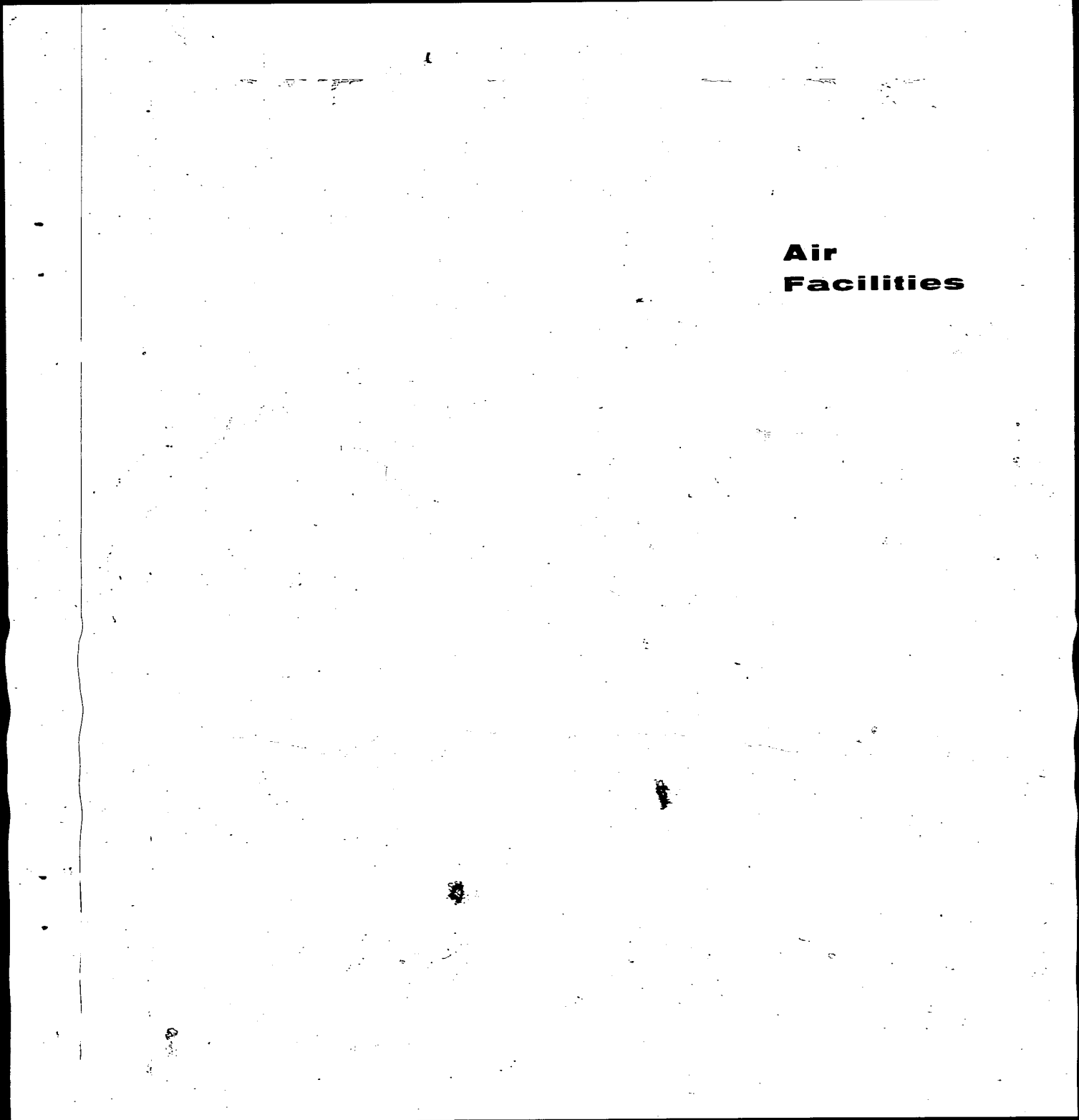
TYPE II SAM SUPPORT FACILITY UNDER CONSTRUCTION. A SECURED AREA APPROXIMATELY 1,000 FT SSE CONTAINS APPROXIMATELY 35 SA-2 TRANSPORTERS WITH PRIME MOVERS, 3 WITHOUT PRIME MOVERS, 15 PROBABLE PRIME MOVERS, AN UNDETERMINED NUMBER OF MISSILE CANNISTERS AND NUMEROUS UNIDENTIFIED PIECES OF EQUIPMENT.



25X1



25X1



**Air
Facilities**



TOP SECRET CHESS RUFF
MISSION 4022 1-4 OCT 65



25X1

AIR FACILITIES

MOZDOK AIRFIELD

UR 4347N 04435E

REFERENCE OAK 4022, PART I, PAGE 25.

DELETE 2 PROBABLE FITTER FROM AIRCRAFT COUNT.



25X1

25X1

ORSHA AIRFIELD SOUTHWEST

UR 5426N 03018E

AIRCRAFT -- 35 BADGER.



25X1

ANADYR/LENINKA AIRFIELD

UR 6442N 17742E

NO NEW CONSTRUCTION OR CHANGE IN FACILITIES OBSERVED.

AIRCRAFT -- 6 BADGER, 20 SWEPT-WING FIGHTER, 1 COOT, 1 CRATE, 2 CAB, AND 6 PROBABLE COLT.



25X1

SARABUZ AIRFIELD

UR 4507N 03359E

NO NEW CONSTRUCTION, CHANGES IN FACILITIES, OR CHANGES IN NUCLEAR OR MISSILE STORAGE.

AIRCRAFT -- 30 BADGER, 1 CAT/CUB, 1 CRATE, AND 2 SMALL STRAIGHT-WING.



25X1

RAMENSKOYE FLIGHT TEST CENTER

UR 5533N 03808E

NO NEW CONSTRUCTION OR CHANGES IN FACILITIES OBSERVED.

AIRCRAFT -- 1 BOUNDER, 6 BISON, 1 BEAR WITH RADOME, 7 BLINDER, 16 BADGER, 7 BEAGLE, 1 FIDDLER, 17 FLASHLIGHT/FIREBAR (3 WITHOUT WINGTIPS), 21 FISHPOT, 12 FISHBED, 6 FITTER, 2 FARMER, 5 FAGOT/FRESCO, 2 IL-62 CLASSICS, 2 CRUSTY, 9 CAMEL, 6 COOKPOT, 8 COOT, 5 CAT/CUB, 1 COKE, 2 CRATE, 1 CAB, 1 CREEK, 2 MAYA, 1 MORAVA L-200, 1



25X1



TOP SECRET CHESS RUFF
MISSION 4022 1-4 OCT 65



25X1

LIGHT STRAIGHT-WING, 2 SMALL STRAIGHT-WING, 6 HOOK (3 WITHOUT ROTORS), 9 HOUND, 1 HARE WITHOUT ROTORS, AND 1 UNIDENTIFIED HELICOPTER FUSELAGE. DERELICT AREA CONTAINS 1 COOT, 1 BEAGLE, 1 FLASHLIGHT/FIREBAR, AND 1 FARMER.

(SEE ATTACHMENT)



25X1

SHUANG-CHENG-TZU AIRFIELD

CH 4021N 09947E



25X1

A NEW HANGAR-TYPE BUILDING IS UNDER CONSTRUCTION IN THE AAM AREA. CONSTRUCTION ACTIVITY IS UNDERWAY ON THE HARDSTAND IN THE ASM AREA. PROBABLE UNGARNISHED NETTING IS OVER THE LINK TAXIWAY WHICH HAD BEEN PREVIOUSLY IDENTIFIED AS A PROBABLE LOADING AREA.

AIRCRAFT -- 1 BEAGLE, 31 FRESCO, 4 PROBABLE FRESCO AND 1 CAB.

(SEE ATTACHMENT)



25X1

TOP SECRET CHESS RUFF



25X1

**Nuclear
Energy**

Page Denied

Next 4 Page(s) In Document Denied

**Naval
Activity/
Ports**



TOP SECRET CHESS RUFF
MISSION 4022 1-4 OCT 65



25X1
ZJAI

NAVAL ACTIVITY/PORTS

SURABAJA NAVAL BASE AND SHIPYARD ID 0712S 11244E

NO APPARENT CHANGE IN FACILITIES.

VESSELS -- 1 W/R-CLASS SS, 3 SKORYY-CLASS DD (1 IN FLOATING DRYDOCK), 2 ALMIRENTE CLEMENTE-CLASS DC (1 IN FLOATING DRYDOCK); 1 PROBABLE PATTIMURA-CLASS PF, 2 RIGA-CLASS DE, 1 PROBABLE RIGA-CLASS DE, 13 PROBABLE KRONSHADT-CLASS PC (1 IN FLOATING DRYDOCK), 1 PROBABLE T-54-CLASS MSF, 12 UNIDENTIFIED SMALL COMBATANT, 4 LST, 2 AO, 5 AUXILIARIES, AND NUMEROUS SMALL CRAFT.



25X1

YU-EIN NAVAL BASE AND PORT CH 1813N 10931E

VESSELS -- 1 PROBABLE KRONSHADT-CLASS PC, 1 POSSIBLE KRONSHADT-CLASS PC, 2 POSSIBLE YP AND 2 UNIDENTIFIED VESSELS AT MAIN QUAYED AREA, 6 POSSIBLE P-4-CLASS PT AT MAIN QUAY, AND 4 PROBABLE P-4-CLASS PT AT PIER. TWO MARINE RAILWAYS APPEAR OCCUPIED BY 1 POSSIBLE P-4-CLASS PT AND 1 UNIDENTIFIED VESSEL. ONE MERCHANT SHIP AT EASTERN QUAY.

NO SIGNIFICANT CHANGE EXCEPT FOR A PREVIOUSLY UNREPORTED QUAYED AREA ON WEST BANK.



25X1

25X1

CHING-TAO SUBMARINE BASE CH 3604N 12019E

NO APPARENT CHANGE IN FACILITIES OBSERVED.

VESSELS -- 5 W/R-CLASS SS AT THE SUBMARINE BASE AND 2 GORDYY-CLASS DD, 3 UNIDENTIFIED SMALL COMBATANTS, 2 LST, AND 5 MERCHANT VESSELS IN THE INNER HARBOR.

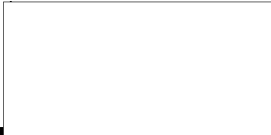


25X1

CHING-TAO NAVAL DOCKYARD CH 3604N 12019E

NO APPARENT CHANGE IN FACILITIES OBSERVED.

VESSELS -- 2 PROBABLE T-43-CLASS MSF, 6 PC, 1 PROBABLE



25X1



TOP SECRET CHESS RUFF
MISSION 4022 1-4 OCT 65



25X1

PC, 1 LST, 1 PROBABLE LST, AND 2 UNIDENTIFIED SMALL VESSELS IN DRYDOCKS, 1 UNIDENTIFIED AUXILIARY, AND NUMEROUS SMALL CRAFT AT THE DOCKYARD. ELEVEN P-6-CLASS PT AND 5 PROBABLE P-4-CLASS PT ARE LOCATED AT THE TORPEDO BOAT BASE.



25X1

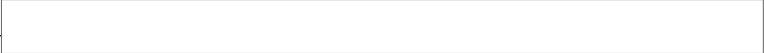
KUANG-HAI SUSPECT SUBMARINE BASE CH 2156N 11246E
NO EVIDENCE OF SUBMARINES OR SUBMARINE FACILITIES.

25X1



25X1

PEI-HAI NAVAL STATION CH 2129N 10906E
NO SUBMARINES OR NAVAL ACTIVITY OBSERVED.



25X1

LU-TA SHIPYARD CH 3855N 12138E
NO NEW CONSTRUCTION OR CHANGES IN FACILITIES OBSERVED.

VESSELS -- 1 G-CLASS SSB, 1 W/R-CLASS SS, 1 PROBABLE W/R-CLASS SS IN DRYDOCK, 1 DD, 4 MERCHANT VESSELS AND 10 UNIDENTIFIED SMALL VESSELS IN THE WATER. VESSELS ON THE BUILDING WAYS INCLUDE 19 POSSIBLE SHANGHAI-CLASS PTF, 5 UNIDENTIFIED SMALL VESSELS AND 1 MERCHANT SHIP.



25X1

KHABAROVSK NVL BASE AND SHPYD AMURFLOT UR 4834N 13502E

5.5 NM NNW OF KHABAROVSK ON THE AMUR RIVER. FACILITIES LOCATED BOTH ON MAINLAND AND ON ZAVACHIY ISLAND. MAINLAND FACILITIES INCLUDE 1 QUAY, 1 OFFSHORE WHARF, AND 2 PIERS. FACILITIES ON ZAVACHIY ISLAND INCLUDE 2 BUILDING WAYS, BOTH BEING USED FOR CONSTRUCTION OF FLOATING DRYDOCKS. NUMEROUS STORAGE AND SUPPORT BUILDINGS IN BOTH AREAS.

VESSELS -- 11 PROBABLE T-43 CLASS MSF AND 3 MEDIUM AND 8 SMALL UNIDENTIFIED CRAFT IN WATER AT ZAVACHIY ISLAND. TEN UNIDENTIFIED SMALL VESSELS BEACHED ON ZAVACHIY



25X1



TOP SECRET CHESS RUFF
MISSION 4022 1-4 OCT 65



25X1

ISLAND. ONE FLOATING DOCK UNDER CONSTRUCTION ON BUILDING WAY AND 3 PARTIALLY COMPLETED AND 1 COMPLETED FLOATING DOCK AND SEVERAL UNIDENTIFIED SMALL CRAFT IN WATER BY ZAVACHIY ISLAND.

ONE MEDIUM COMBATANT AND SEVERAL RIVER CRAFT ALONG MAINLAND SHORE.

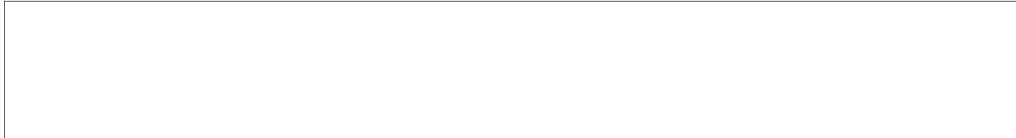


25X1

KHABAROVSK SHIPYARD USSURI SOUTH

UR 4824N 13506E

VESSELS -- 1 PROBABLE PETYA-CLASS PCE, 1 POSSIBLE POTI-CLASS PC AND SEVERAL UNIDENTIFIED SMALL CRAFT IN MAIN FITTING-OUT BASIN.



25X1

25X1

KIMCHAEK PORT FACILITIES

KN 4039N 12912E

VESSELS -- APPROXIMATELY 26 SMALL VESSELS ALONG MAIN HARBOR AREA, 6 SMALL VESSELS AT QUAY, AND APPROXIMATELY 6 SMALL VESSELS IN SOUTHERNMOST HARBOR.



25X1

GURYEV PORT FACILITIES

UR 4706N 05154E

VESSELS -- 5 RIVER CARGO SHIPS, 30 BARGES, AND SEVERAL HUNDRED SMALL BOATS.



25X1



25X1

**Biological/
Chemical
Warfare**

Page Denied

Next 2 Page(s) In Document Denied

**Electronics/
Communications**



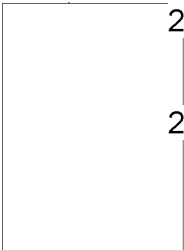
TOP SECRET CHESS RUFF
MISSION 4022 1-4 OCT 65



25X1

ELECTRONICS/COMMUNICATIONS

TA-TUNG VLF RADIO COMMUNICATIONS STATION CH 3957N 11316E
STATION IS COMPLETE. NO CHANGE OBSERVED.



25X1

25X1

OSTROV MITYUSHEV TALL KING RADAR SITE UR -7310N 05335E
NORTHERN HALF OF SEARCH AREA IS COVERED. NO TALL KING
OBSERVED IN CLOUD-FREE AREAS.



25X1

GURYEV TALL KING - AW RADAR FACILITY UR 4709N 05152E BONUS 1
3 NM NORTHWEST OF GURYEV.

SINGLE SECURED FACILITY CONTAINS 1 TALL KING ANTENNA, 1
ANTENNA BUILDING, 1 SUPPORT BUILDING, 1 GENERATOR
BUILDING, AND A POSSIBLE BURIED FUEL STORAGE TANK.

AN AW RADAR FACILITY IS LOCATED 1,000 FT SE OF THE TALL
KING AND CONTAINS 1 BIG MESH RADAR, 1 HEIGHT FINDER
RADAR, 9 ELECTRONIC VAN REVETMENTS (5 OCCUPIED), AND 9
SUPPORT BUILDINGS.

A PROBABLE HF COMMUNICATIONS FACILITY IS LOCATED 1,500
FT SE OF AW RADAR FACILITY AND CONTAINS 1 OCCUPIED
ELECTRONIC VAN REVETMENT, AND 1 SUPPORT BUILDING. NO
ANTENNAS ARE VISIBLE.



25X1

BANK TALL KING-AW RADAR FACILITY UR 3925N 04917E BONUS 2
2.5 NM NE OF BANK.

SINGLE SECURED FACILITY CONTAINS 1 TALL KING ANTENNA, 1
ANTENNA BUILDING, 1 SUPPORT BUILDING, 1 GENERATOR
BUILDING, AND 2 PROBABLE MAINTENANCE BUILDINGS.

A SEPARATELY SECURED AW RADAR FACILITY IS LOCATED 1,000
FT NE OF THE TALL KING AND CONSISTS OF 3 UNIDENTIFIED
RADARS, A POSSIBLE COMMUNICATIONS FACILITY, 2

TOP SECRET CHESS RUFF



25X1



TOP SECRET CHESS RUFF
MISSION 4022 1-4 OCT 65



25X1

**COMMUNICATION VAN REVETMENTS, (1 OCCUPIED), 3
COMMUNICATIONS VANS ON PADS AND 4 SUPPORT BUILDINGS.**



25X1



25X1

**Military
Activity**



TOP SECRET CHESS RUFF
MISSION 4022 1-4 OCT 65



25X1

MILITARY ACTIVITY

KA-ERH-MU ARMY GENERAL SUPPLY DEPOT CH 3627N 09455E

ONLY MINOR CONSTRUCTION, CONSISTING OF 6 STORAGE BUILDINGS, HAS TAKEN PLACE SINCE LAST COVERAGE.

TWENTY FIELD ARTILLERY GUNS, 19 AAA GUNS, 8 POSSIBLE ARMORED PERSONNEL CARRIERS, AND APPROXIMATELY 1,150 CARGO TRUCKS OBSERVED.



25X1

LIU-CHOU UNIDENTIFIED MILITARY AREA 2 CH 2418N 10922E

NO CHANGES IN FACILITIES, NEW CONSTRUCTION, MILITARY VEHICLES OR PIECES OF EQUIPMENT OBSERVED IN CLOUD-FREE AREAS.



25X1

25X1

DOMBOVAR ARTILLERY BARRACKS 1 HU 4620N 01807E

AREA APPEARS TO BE OCCUPIED. NO TANKS/SP GUNS OBSERVED. TWENTY-SIX VEHICLES/PIECES OF EQUIPMENT OBSERVED.



25X1

SHAO CHINESE CAMP TI 2746N 09155E

NO NEW CONSTRUCTION OR CHANGES IN FACILITIES OBSERVED. NO VEHICLES, WEAPONS, OR EQUIPMENT OBSERVED. NO INDICATION OF TROOP OR SUPPLY BUILDUP.



25X1

LARANG POSSIBLE MILITARY INSTALLATION TI 2749N 08859E

SQUARE WALLED AREA DOES NOT CONTAIN ANY BUILDINGS.

NO NEW CONSTRUCTION, VEHICLES OR PIECES OF EQUIPMENT OR ANY INDICATIONS OF TROOP OR SUPPLY BUILDUP.



25X1

25X1



TOP SECRET CHESS RUFF
MISSION 4022 1-4 OCT 65

LHASA ARMY BARRACKS SOUTH THIP

TI 2937N 09107E

NO CHANGES IN FACILITIES OBSERVED. NO INDICATION OF TROOP OR SUPPLY BUILDUP.

TWELVE FIELD ARTILLERY PIECES AND 34 CARGO TRUCKS OBSERVED.

[Redacted]

LHASA ARMY BARRACKS WEST NORTU LINGKA

TI 2939N 09102E

EIGHT AREAS CENTERED 4 NM WEST OF LHASA. NO NEW CONSTRUCTION OBSERVED. LARGE QUANTITIES OF OPEN POL DRUM STORAGE OBSERVED.

TWO HUNDRED CARGO TRUCKS, 35 UNIDENTIFIED VEHICLES AND 4 POSSIBLE FIELD ARTILLERY PIECES.

[Redacted]

LHASA ARMY SUPPLY DEPOT NORTH

TI 2940N 09107E

2.5 NM NNE OF LHASA ALONG ROAD TO HEI-HO.

NO NEW CONSTRUCTION OBSERVED. NO INDICATION OF TROOP OR SUPPLY BUILDUP.

APPROXIMATELY 80 CARGO TRUCKS OBSERVED.

[Redacted]

LHASA ARMY BARRACKS SOUTHWEST

TI 2938N 09106E

NO CHANGES IN FACILITIES. NO INDICATION OF TROOP OR SUPPLY BUILDUP.

FORTY-FIVE CARGO TRUCKS OBSERVED.

[Redacted]

TSO-NA CAMP AND STORAGE AREA

TI 2800N 09201E

THREE SMALL SEPARATE AREAS ARE 5 NM NE OF TSO-NA ALONG EAST AND WEST SIDES OF ROAD.

25X1

25X1

25X1

25X1

25X1

25X1

25X1



TOP SECRET CHESS RUFF
MISSION 4022 1-4 OCT 65



25X1
ZUA

NO NEW CONSTRUCTION OR CHANGES IN FACILITIES NOTED.
NO VEHICLES, WEAPONS, OR EQUIPMENT OBSERVED.
NO INDICATION OF TROOP OR SUPPLY BUILDUP OBSERVED.



25X1

TSO-NA BARRACKS

TI 2802N 09154E

NO CHANGE IN FACILITIES AND NO VEHICLES NOTED.
20 SMALL POSSIBLE PERSONNEL TENTS OBSERVED.



25X1

JIH-KO-TSE ARMY BKS TASHI KYITSA MAGAR

TI 2915N 08853E

AREA 1, 3 NM SOUTH OF ZHIKATSE ON THE WEST SIDE OF THE ZHIKATSE-PELAM HIGHWAY, IS A SECURED AREA CONTAINING 1 ADMINISTRATION BUILDING, 8 STORAGE BUILDINGS, 2 VEHICLE SHEDS, 1 MAINTENANCE BUILDING AND 10 SUPPORT BUILDINGS. APPROXIMATELY 30 CARGO TRUCKS OBSERVED.

AREA 2, 2.5 NM SOUTH OF ZHIKATSE ON THE EAST SIDE OF THE ZHIKATSE-PELAM HIGHWAY, IS A SECURED AREA CONTAINING 1 U-SHAPED BUILDING AND 1 LARGE UNIDENTIFIED BUILDING. TWENTY-THREE CARGO TRUCKS OBSERVED.

AREA 3, 2 NM SOUTH OF ZHIKATSE ON THE WEST SIDE OF THE ZHIKATSE-PELAM HIGHWAY, IS A LARGE SECURED AREA CONTAINING 49 BARRACKS, 5 ADMINISTRATION BUILDINGS/ BARRACKS, 12 STORAGE BUILDINGS, 9 SUPPORT BUILDINGS, AND 3 VEHICLE SHEDS. TEN CARGO TRUCKS OBSERVED.

AREA 4, ON SOUTH EDGE OF ZHIKATSE ON THE WEST SIDE OF THE ZHIKATSE-PELAM HIGHWAY, IS A LARGE SECURED AREA CONTAINING 15 PROBABLE BARRACKS, 1 LARGE E-SHAPED ADMINISTRATION BUILDING, 2 OTHER ADMINISTRATION BUILDINGS, APPROXIMATELY 15 STORAGE BUILDINGS, 39 SUPPORT BUILDINGS, 5 VEHICLE SHEDS, AND 1 LARGE UNIDENTIFIED BUILDING. TWELVE UNIDENTIFIED VEHICLES OBSERVED.

AREA 5, ON SE EDGE OF ZHIKATSE ON THE EAST SIDE OF THE ZHIKATSE-PELAM HIGHWAY, IS A LARGE SECURED AREA CONTAINING 23 BARRACKS, 1 U-SHAPED ADMINISTRATION

25X1



25X1



TOP SECRET CHESS RUFF
MISSION 4022 1-4 OCT 65



25X1
25X1

BUILDING, 4 STORAGE BUILDINGS, 37 SUPPORT BUILDINGS,
AND 6 VEHICLE SHEDS. TWENTY-SIX CARGO TRUCKS AND 11
UNIDENTIFIED VEHICLES OBSERVED.

AREA 6, ON NORTH EDGE OF ZHIKATSE, IS A LARGE SECURED
AREA CONTAINING 16 BARRACKS, 1 PROBABLE ADMINISTRATION
BUILDING, 1 LARGE MULTIWING BUILDING UNDER
CONSTRUCTION, 24 SUPPORT BUILDINGS, 2 VEHICLE SHEDS,
AND 6 SEPARATELY SECURED PROBABLE VEHICLE SHEDS. ONE
CARGO TRUCK AND 12 UNIDENTIFIED VEHICLES OBSERVED.



25X1

MAYKOP ARMY BARRACKS SOUTH

UR 4434N 04007E

NO APPARENT CHANGE IN FACILITIES



25X1

25X1

25X1

THIRTY CANVAS-COVERED TANKS, 59 TANKS/SP GUNS, 20 APC,
10 TRACKED VEHICLES, 6 TRACTOR-TRAILER TRUCKS, 82 CARGO
TRUCKS, 7 VAN TRUCKS, 7 UTILITY TRUCKS, 13 TRUCKS, 17
UNIDENTIFIED VEHICLES, 4 PROBABLE CARGO TRAILERS, 53
VEHICLES/PIECES OF EQUIPMENT, 72 FA PIECES AND 50 AAA
PIECES.



25X1

OMSK MANEUVER AREA SOUTH

UR 5451N 07320E

ONLY THE NORTH AREA IS COVERED ON PHOTOGRAPHY WITH
HEAVY CLOUD COVER. TWO LARGE AND 8 SMALLER STORAGE
BUILDINGS AND A TRACKED-VEHICLE DRIVING RANGE OBSERVED.
NO CHANGE IN FACILITIES AND NO EQUIPMENT OR VEHICLES
OBSERVED IN CLOUD-FREE AREAS.



25X1

VOLGOGRAD ARMY BARRACKS WEST 3

UR 4844N 04429E

2.5 NM NORTH OF VOLGOGRAD.

INSTALLATION CONTAINS 34 BARRACKS, 8 ADMINISTRATION, 61
STORAGE/SUPPORT, 11 VEHICLE/MAINTENANCE BUILDINGS, AND
44 QUARTERS. AT LEAST 25 TRUCKS AND APPROXIMATELY 85
VEHICLES/PIECES OF EQUIPMENT OBSERVED.



25X1



TOP SECRET CHESS RUFF
MISSION 4022 1-4 OCT 65



25X1
25X1

A SOD LANDING STRIP WITH 2 LIAISON AIRCRAFT IS LOCATED
ADJACENT TO THE AREA.



25X1

VOLGOGRAD HQ 266TH MTZ RIFLE DIVISION UR 4844N 04429E



25X1

THIS UNIT IS REPORTED TO BE QUARTERED WITHIN VOLGOGRAD
ARMY BARRACKS WEST 3.



25X1



25X1



TOP SECRET CHESS RUFF
MISSION 4022 1-4 OCT 65



25X1

COMPLEXES

CHING-TAO COMPLEX

CH 3604N 12019E

CONSTRUCTION ACTIVITY AND LEVEL OF INDUSTRIAL ACTIVITY, INDICATED BY SHIPS AND RAIL CARS, APPEAR TO BE NORMAL.



25X1

25X1

BANDUNG COMPLEX

ID 0654S 10736E

PRIMARILY RESIDENTIAL COMPLEX CONTAINS SOME LIGHT INDUSTRY, A LARGE BARRACKS AND PROBABLE SCHOOL AREA, AND A PROBABLE ARSENAL CONTAINING NUMEROUS CAMOUFLAGED PRODUCTION AND STORAGE BUILDINGS.



25X1

MALANG COMPLEX

ID 0759S 11238E

LEVEL OF INDUSTRIAL ACTIVITY AND QUALITY OF NEW CONSTRUCTION IS UNDETERMINED. APPROXIMATELY 9 PERCENT OF TOWN COVERED. PART OF THE EASTERN SECTOR OF THE TOWN IS NOT COVERED.



25X1

PALEMBANG COMPLEX

ID 0300S 10446E

NO INDUSTRIAL ACTIVITY OR CONSTRUCTION NOTED IN CLOUD-FREE AREAS. NO NEARBY MILITARY INSTALLATIONS IDENTIFIED.



25X1

BANDUNG PETROLEUM PROD STORAGE SHELL

ID 0654S 10736E

IN EAST CENTRAL BANDUNG.

RAIL-SERVED, PROBABLY SECURED POL STORAGE AREA CONTAINS 1 LARGE, 2 MEDIUM, AND 4 SMALL TANKS, 1 LARGE AND 3 MEDIUM STORAGE BUILDINGS, AN ADMINISTRATION BUILDING, AND SEVERAL OTHER SMALL BUILDINGS.



25X1



25X1



TOP SECRET CHESS RUFF
MISSION 4022 1-4 OCT 65



25X1
25X1

LIU-CHOU COMPLEX :

CH 2418N 10924E

COMPLEX 60 PERCENT CLOUD COVERED ON GOOD, NON-STEREO PHOTOGRAPHY. NO NEW FACILITIES OR UNUSUAL ACTIVITY OBSERVED.



25X1

VITEBSK COMPLEX

UR 5512N 03011E

NO SIGNIFICANT CHANGE TO ANY OF THE FACILITIES PREVIOUSLY REPORTED. HOWEVER, 2 INDUSTRIES IN VARIOUS STAGES OF CONSTRUCTION ARE OBSERVED IN THE CITY, 1 IS A MECHANICAL PROCESSING INDUSTRY AND THE OTHER A FABRICATION INDUSTRY.



25X1

25X1

ORSHA COMPLEX

UR 5431N 03024E

COMPLEX IS COMPLETELY COVERED.



25X1

UFA COMPLEX

UR 5443N 05558E

COMPLEX IS 40 PERCENT CLOUD-COVERED. CENTER OF CITY IS CLOUD-FREE.



25X1

ZATEC COMPLEX

CZ 5019N 01332E

COMPLEX IS COMPLETELY COVERED ON GOOD, NON-STEREO PHOTOGRAPHY WITH A LIGHT HAZE OVER THE TARGET.



25X1

AL BASRAH COMPLEX

IQ 3031N 04749E

WESTERN 40 PERCENT OF COMPLEX IS COVERED.



25X1



25X1



TOP SECRET CHESS RUFF
MISSION 4022 1-4 OCT 65



25X1
ZJAI

GOMEL COMPLEX

UR 5225N 03100E

COMPLEX IS 70 PERCENT COVERED ON GOOD, STEREO PHOTOGRAPHY. AREA EAST OF THE SOZH RIVER IS NOT COVERED.



25X1

25X1

KAMYSHIN COMPLEX

UR 5005N 04524E

ONLY WEST EDGE OF COMPLEX COVERED ON CLOUDY, NON-STEREO PHOTOGRAPHY.



25X1

KORKINO COMPLEX

UR 5606N 06557E

RESIDENTIAL COMPLEX, LESS THAN 0.5 SQ NM IN AREA, CONTAINS NO APPARENT MILITARY OR INDUSTRIAL ACTIVITY.



25X1

SOVETSKAYA GAVAN COMPLEX

UR 4858N 14018E

COMPLEX IS COMPLETELY COVERED.



25X1

TAIZZ COMPLEX

YE 1334N 04401E

COMPLEX IS COMPLETELY COVERED.



25X1

VOLGOGRAD COMPLEX

UR 4842N 04430E

COMPLEX IS COMPLETELY COVERED.



25X1



25X1



TOP SECRET CHESS RUFF
MISSION 4022 1-4 OCT 65



25X1
25X1

OTHER ACTIVITY

BELEV SENSITIVE OPERATIONS COMPLEX UR 5332N 03630E



25X1

EXTENSIVE CONSTRUCTION ACTIVITY EVIDENT IN OPERATIONS AREA, WITH 3 BUNKERS UNDER CONSTRUCTION. BUNKER 1 IS A GAMMA BUNKER NEARLY COMPLETED. BUNKER 2 IS A DELTA BUNKER APPROXIMATELY 75 PERCENT COMPLETE. BUNKER 3 IS A GAMMA BUNKER APPROXIMATELY 60 PERCENT COMPLETE. PRELIMINARY EXCAVATING FOR BUNKER 4 HAS BEGUN. THE EXCAVATION FOR BUNKER 5 HAS BEEN CUT TO BUNKER CONFIGURATION AND THE FLOOR OF THE EXCAVATION HAS BEEN LEVELED, BUT THERE IS NO CONSTRUCTION AS YET.

VERTICAL FRAMING MEMBERS FOR TRAVELING BRIDGE CRANE HAVE BEEN ERECTED, AND TRACK IS BEING LAID INTO THE OPERATIONS SUPPORT RAIL FACILITY. HIGH-BAY DRIVE-THROUGH BUILDING IS COMPLETE.

MOTOR POOL CONTAINS 4 IDENTICAL LARGE BUILDINGS AND 1 SMALLER BUILDING, ALL APPARENTLY COMPLETE EXCEPT FOR APPLICATION OF ROOFING MATERIAL.

MILITARY HOUSING AREA NOW CONTAINS 8 LARGE MULTISTORY BARRACKS, 7 SMALLER TWO-STORY BARRACKS, AND 13 DUPLEX HOUSES. NUMEROUS DUMP TRUCKS AND OTHER CONSTRUCTION-RELATED VEHICLES, SOME IN TRANSIT, APPEAR THROUGHOUT COMPLEX.

NOTE -- THE BUNKERS UNDER CONSTRUCTION ARE OF THE SECOND GENERATION RATHER THAN THIRD AS PREVIOUSLY REPORTED.

(SEE ATTACHMENT).



25X1



25X1

**Other
Activity**

Attachments



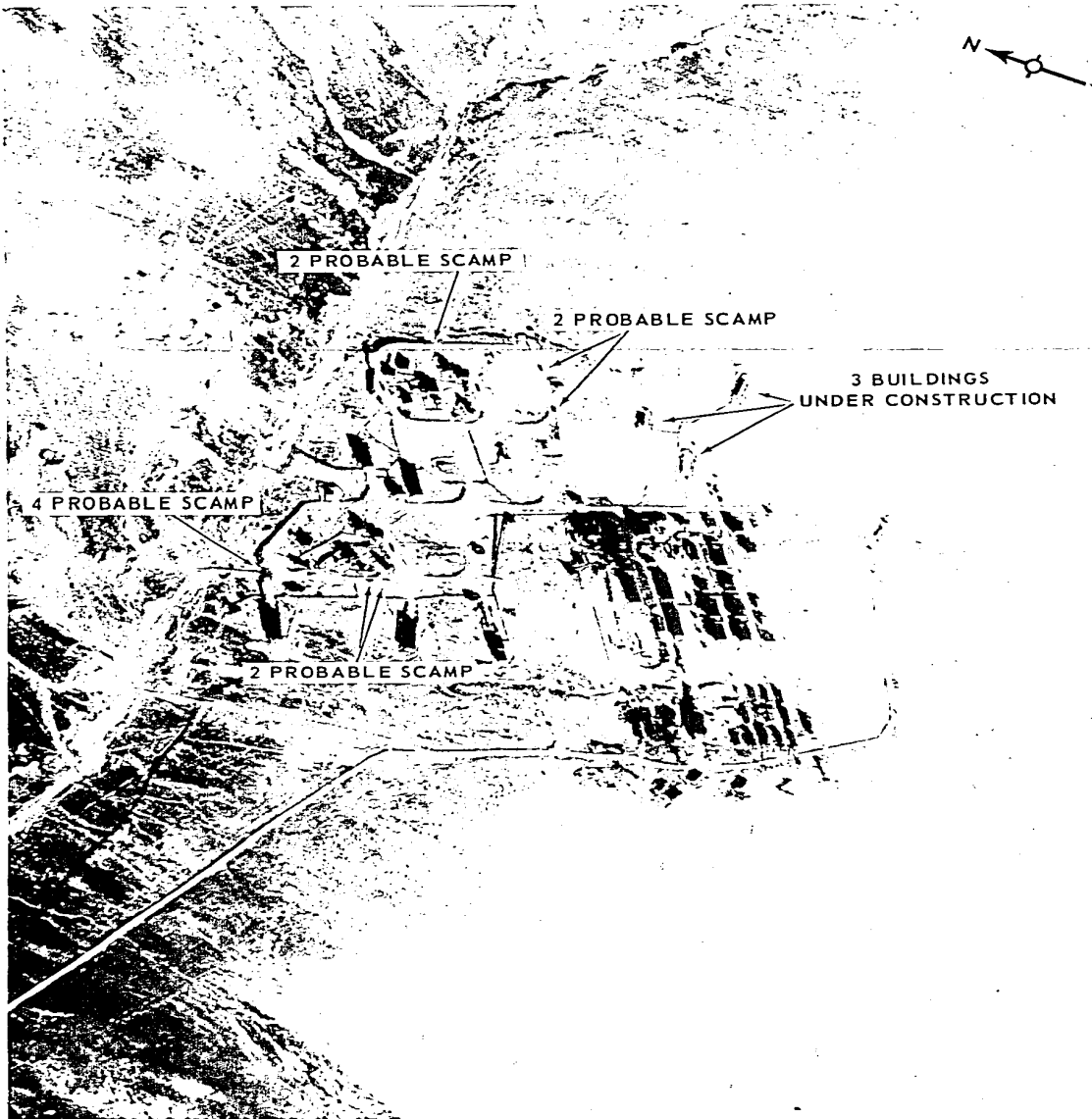
TOP SECRET CHESS RUFF

MISSION 4022, 1-4 OCTOBER 1965



ATTACHMENT 1

25X1



MRBM LAUNCH SITE, UGOLNYY, USSR

REF ID: A66110 051

TOP SECRET CHESS RUFF



25X1



TOP SECRET CHESS RUFF
MISSION 4022, 1-4 OCTOBER 1965



25X1

ATTACHMENT 2



LAUNCH COMPLEX B, SHUANG-CHENG-TZU MISSILE TEST CENTER, CHINA

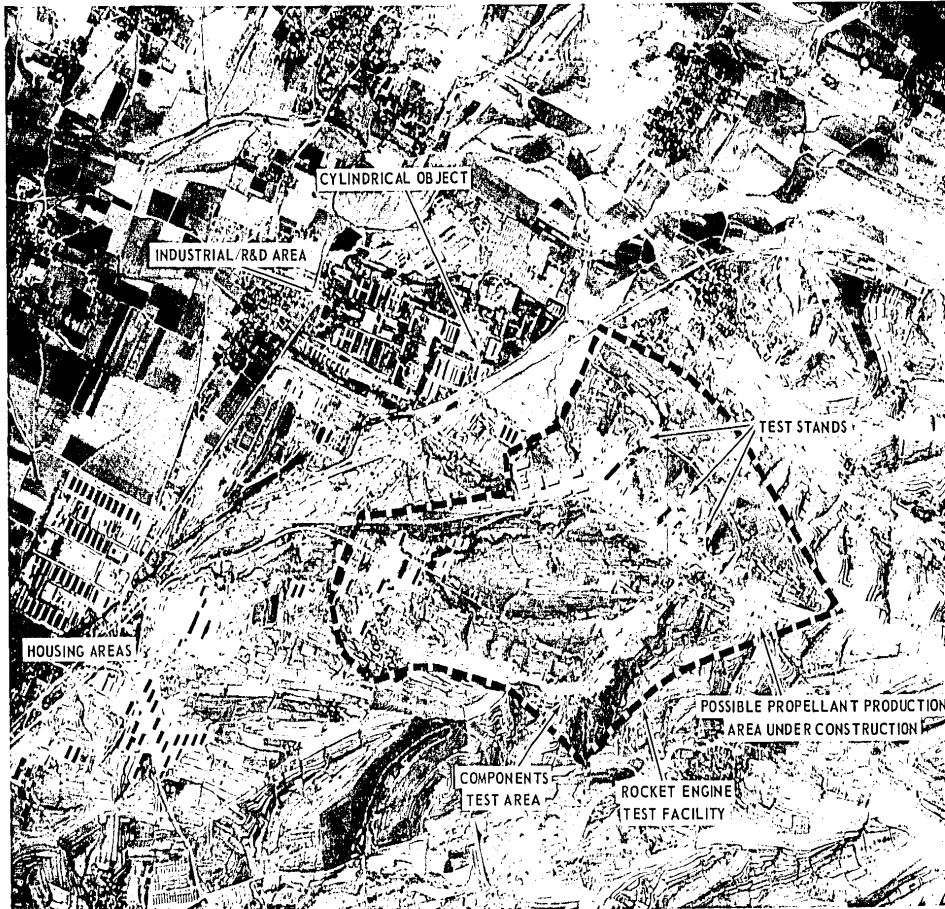
REF ID: A64266 (10 65)

TOP SECRET CHESS RUFF



25X1

TOP SECRET CHESS RUFF



CHANG-HSIN-TIEN MISSILE DEVELOPMENT CENTER, CHINA

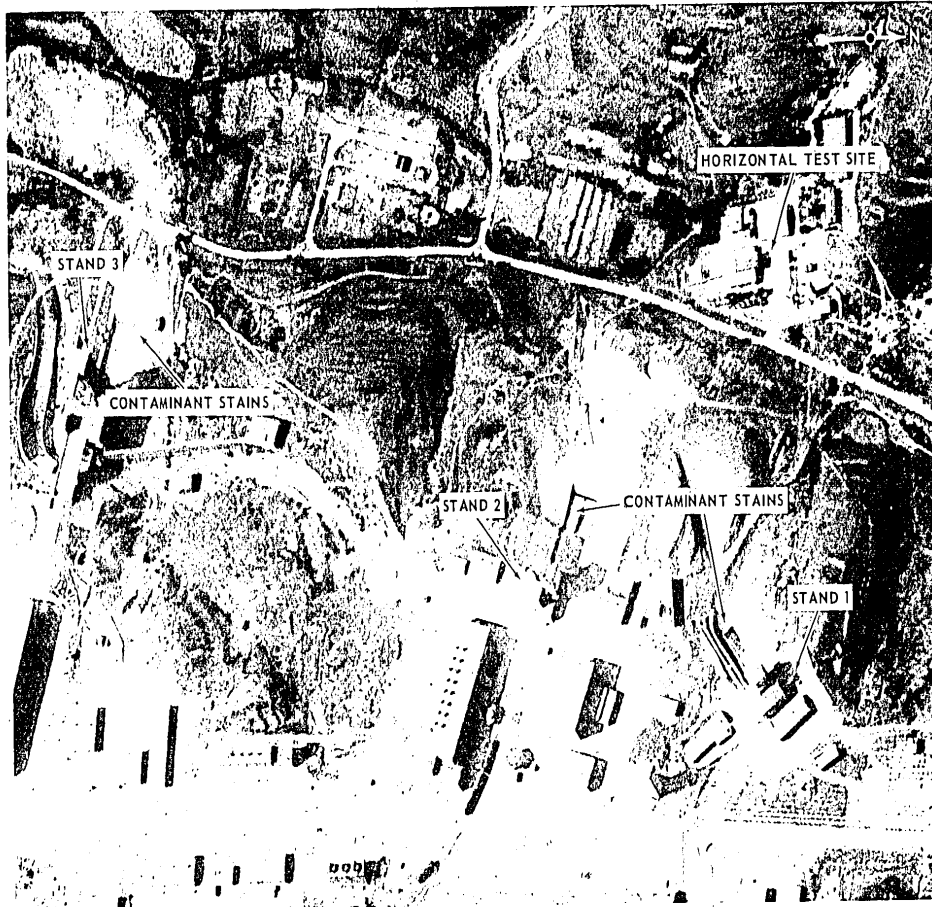
TOP SECRET CHESS RUFF
MISSION 4022, 1-4 OCTOBER 1965

ATTACHMENT 3

25X1

25X1

25X1



TOP SECRET CHESS RUFF

TOP SECRET CHESS RUFF
MISSION 4022, 1-4 OCTOBER 1965

ATTACHMENT 4

ROCKET ENGINE TEST FACILITY, CHANG-HSIN-TIEN MISSILE DEVELOPMENT CENTER, CHINA

25X1

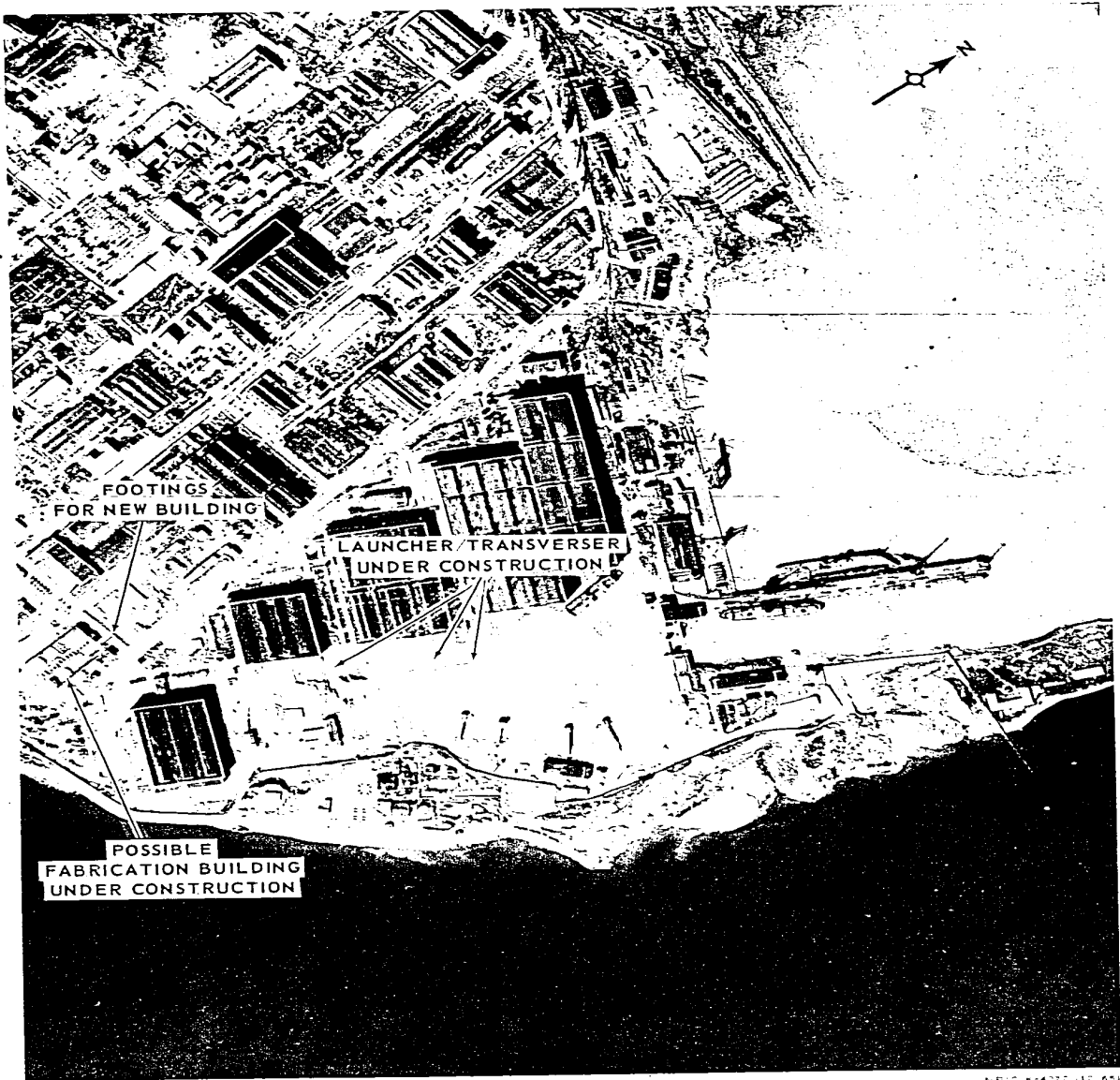
25X1
25X1

TOP SECRET CHESS RUFF

MISSION 4022, 1-4 OCTOBER 1965

ATTACHMENT 5

25X1



AMUR SHIPYARD 199, KOMSOMOLSK, USSR

TOP SECRET CHESS RUFF

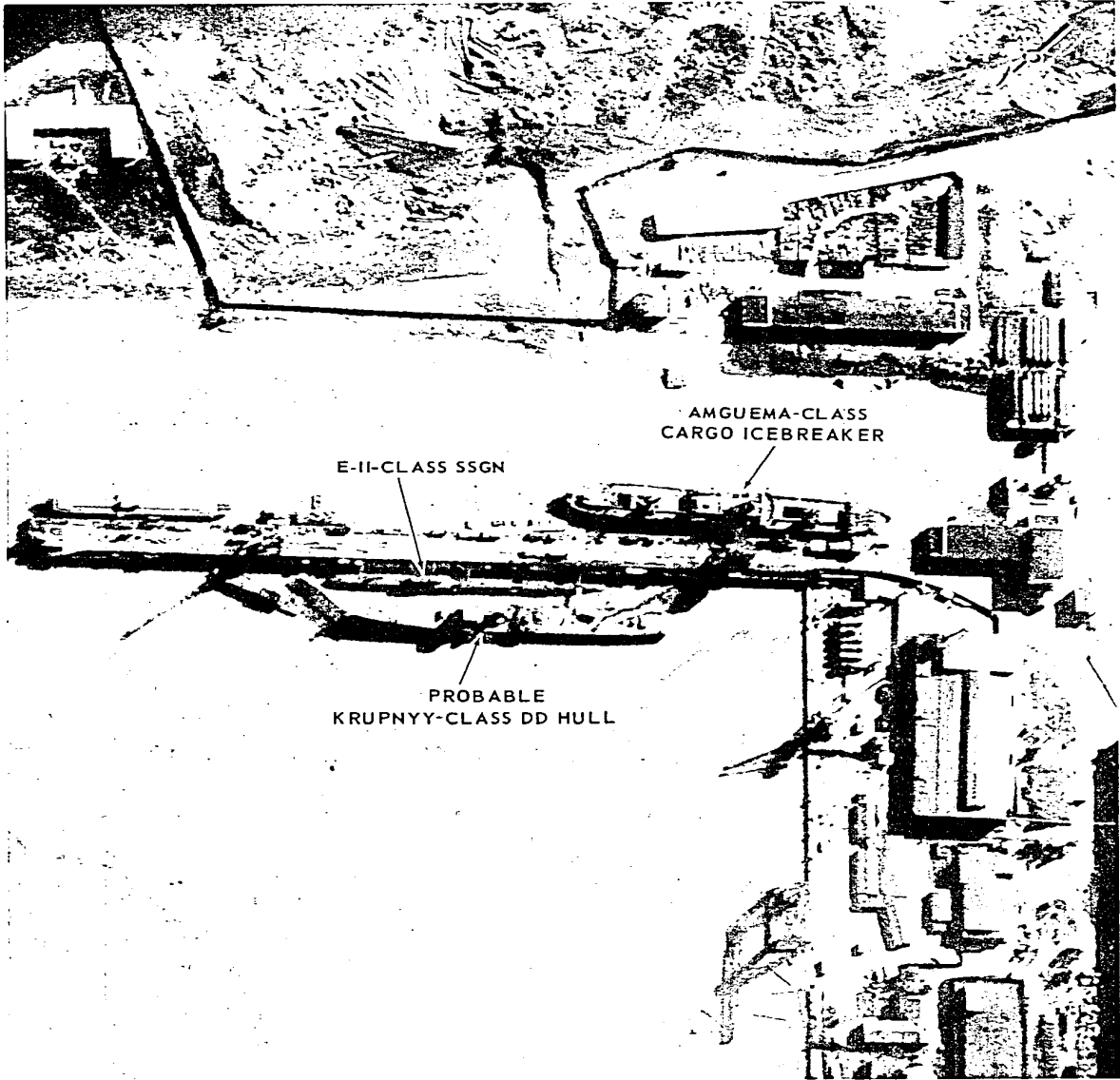
25X1

TOP SECRET CHESS RUFF

MISSION 4022, 1-4 OCTOBER 1965

ATTACHMENT 6

25X1



AMUR SHIPYARD 199, KOMSOMOLSK, USSR

TOP SECRET CHESS RUFF

25X1



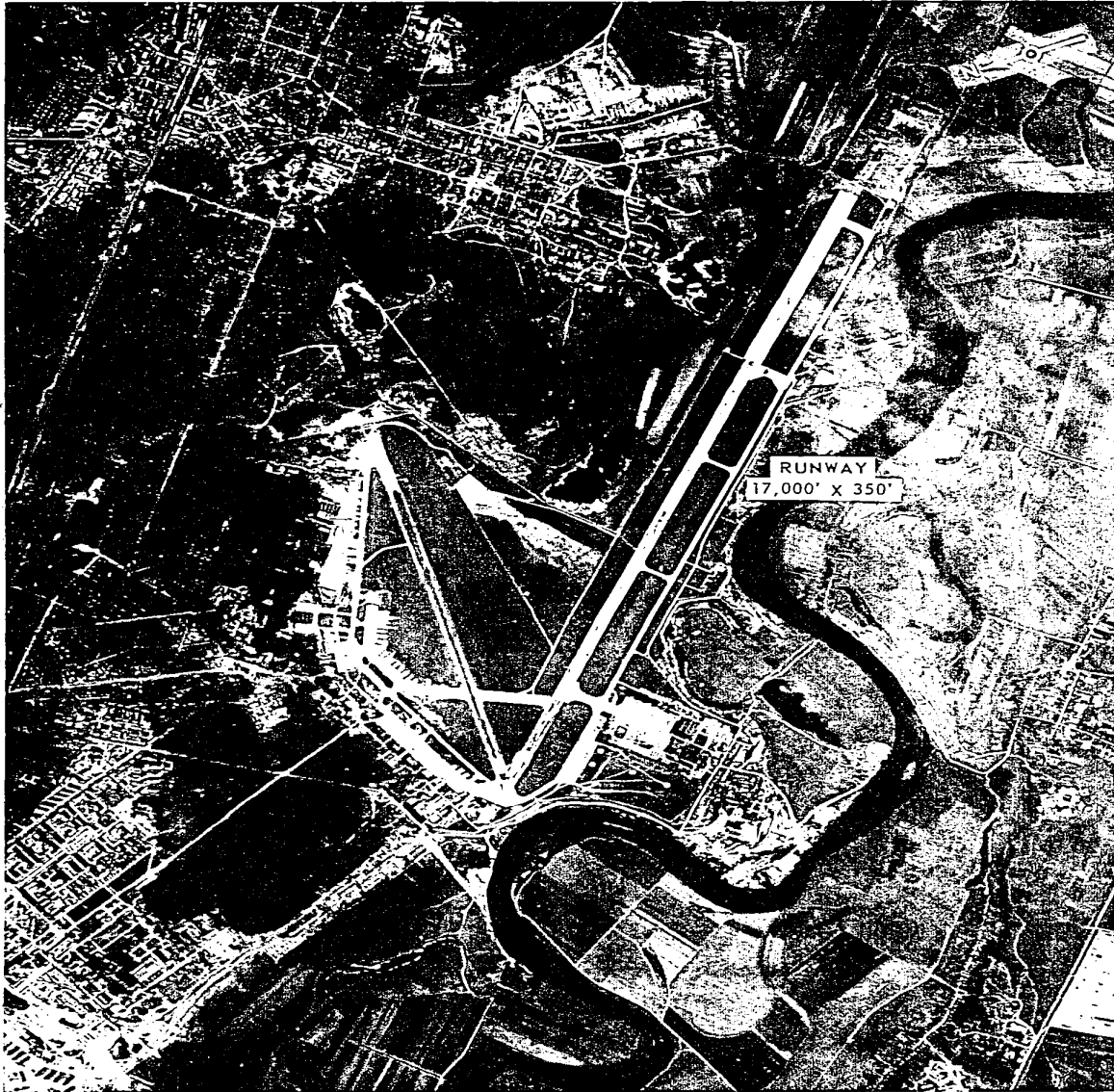
TOP SECRET CHESS RUFF

MISSION 4022, 1-4 OCTOBER 1965



ATTACHMENT 7

25X1
ZVA1



FLIGHT TEST CENTER, RAMENSKOYE, USSR

NPIC K-4274 LC 651

TOP SECRET CHESS RUFF



25X1

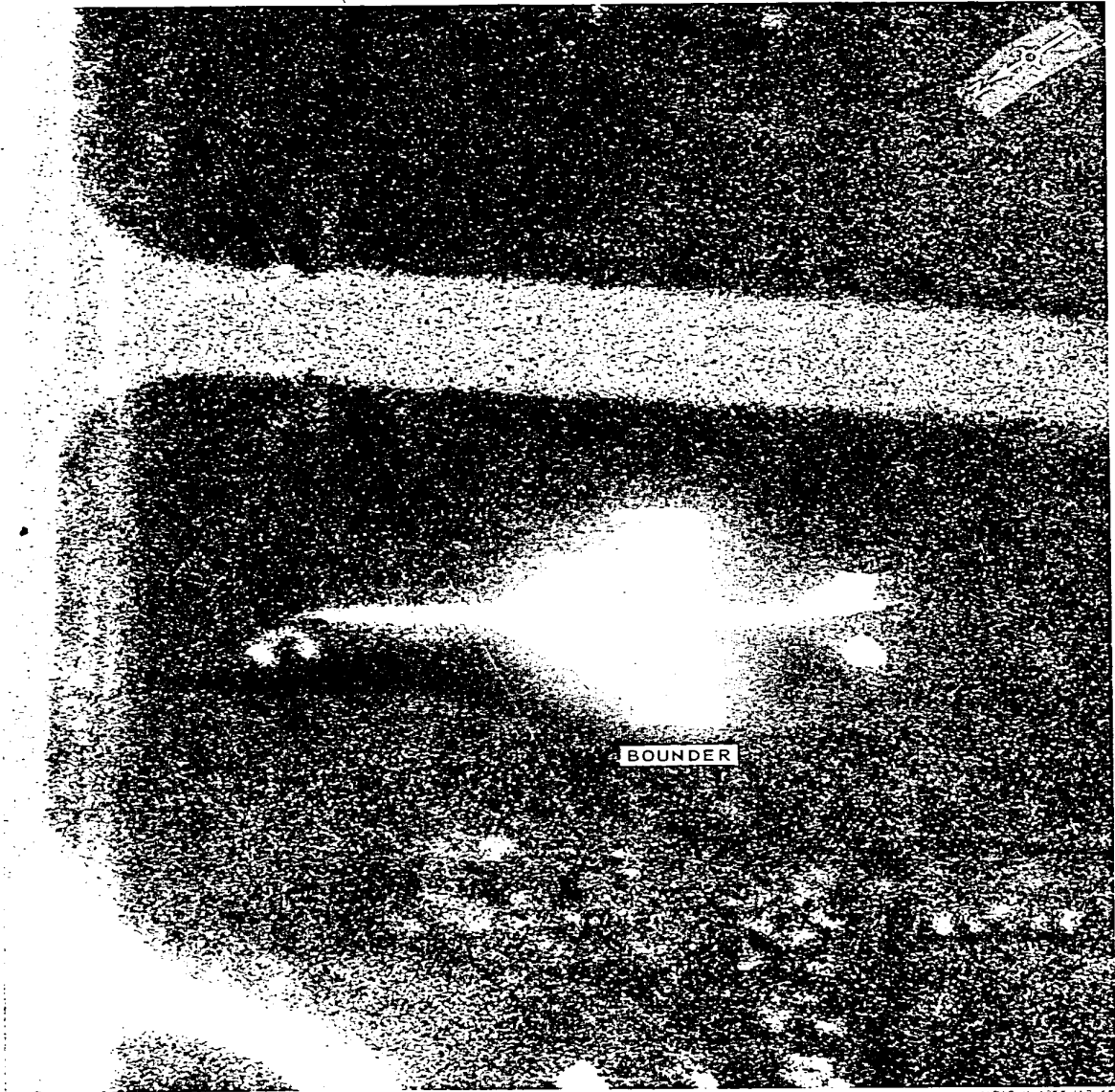


TOP SECRET CHESS RUFF
MISSION 4022, 1-4 OCTOBER 1965



ATTACHMENT 8

25X1



BOUNDER, FLIGHT TEST CENTER, RAMENSKOYE, USSR

REF ID: A665112 65

TOP SECRET CHESS RUFF



25X1



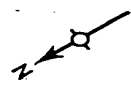
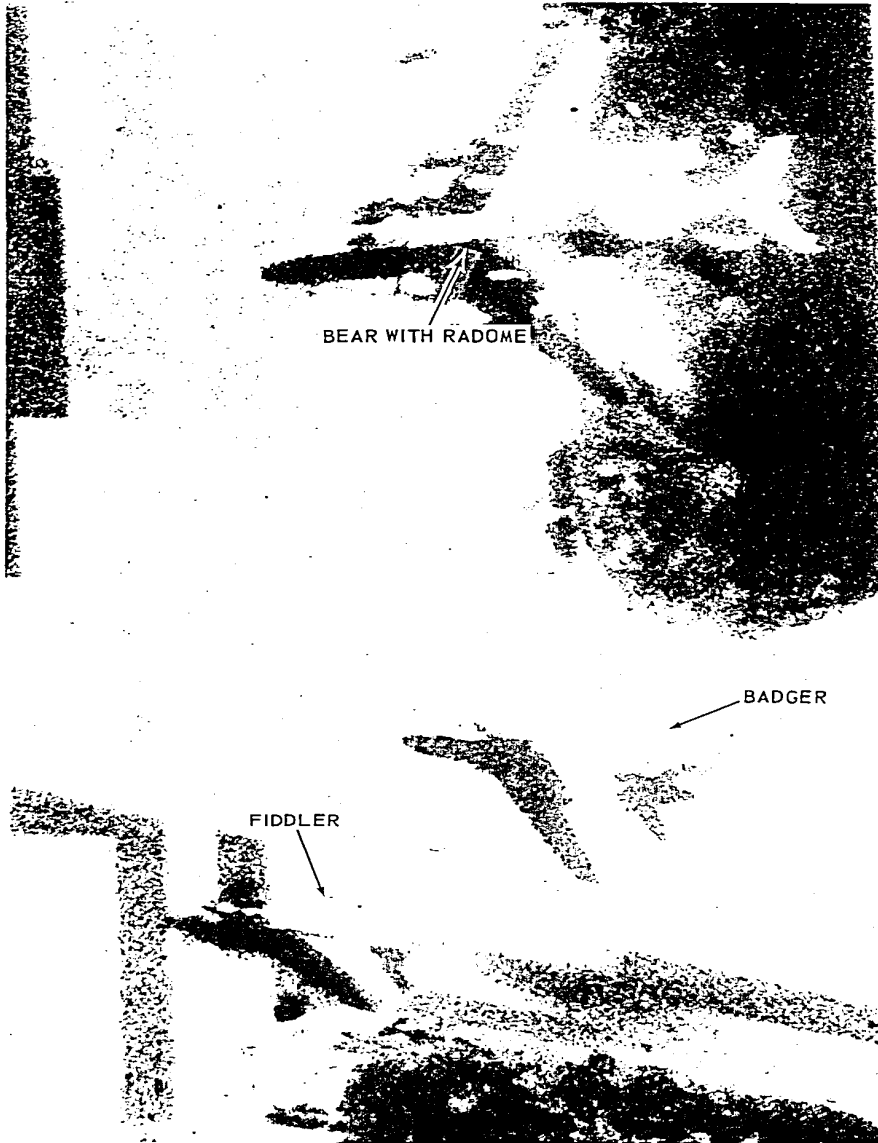
TOP SECRET CHESS RUFF

MISSION 4022, 1-4 OCTOBER 1965



25X1

ATTACHMENT 9



BEAR WITH RADOME, FLIGHT TEST CENTER, RAMENSKOYE, USSR

MPIC R-4026 10 651

TOP SECRET CHESS RUFF



25X1



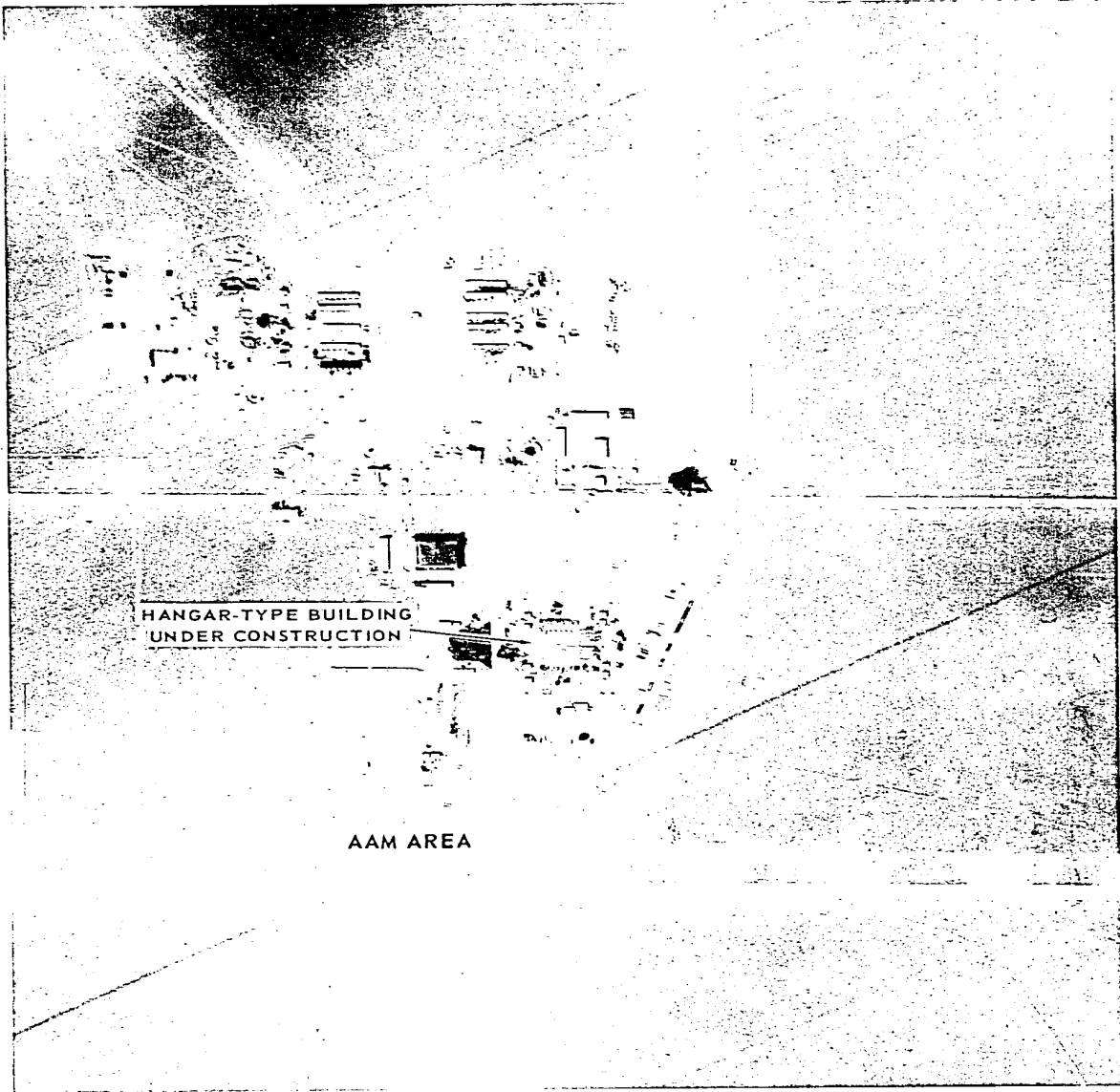
TOP SECRET CHESS RUFF

MISSION 4022, 1-4 OCTOBER 1965



ATTACHMENT 10

25X1



TOP SECRET CHESS RUFF

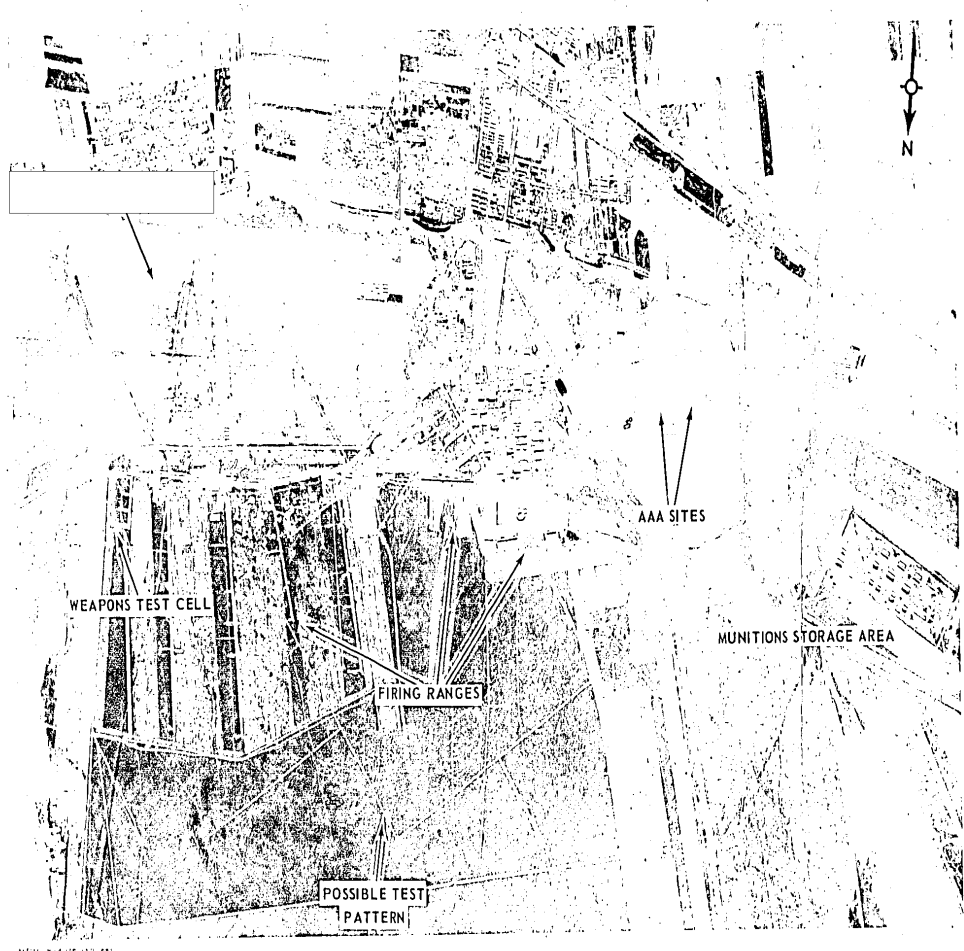


25X1

Page Denied

Next 2 Page(s) In Document Denied

TOP SECRET CHESS RUFF



WEAPONS TEST RANGE, PAI-CHENG, CHINA

TOP SECRET CHESS RUFF
MISSION 4022, 1-4 OCTOBER 1965

ATTACHMENT 14



25X1

25X1

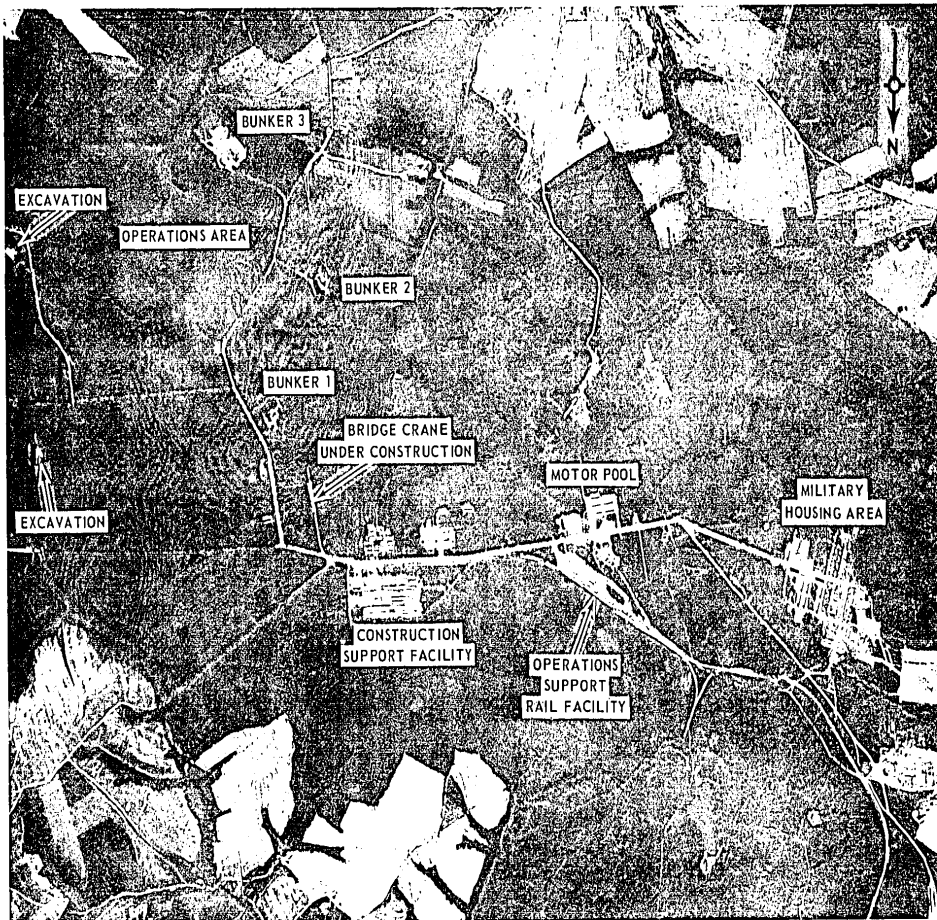
25X1

25X1

Page Denied

25X1

TOP SECRET CHESS RUFF



TOP SECRET CHESS RUFF
MISSION 4022, 1-4 OCTOBER 1965

ATTACHMENT 16

25X1
25X1

SENSITIVE OPERATIONS COMPLEX, BEL'EV, USSR

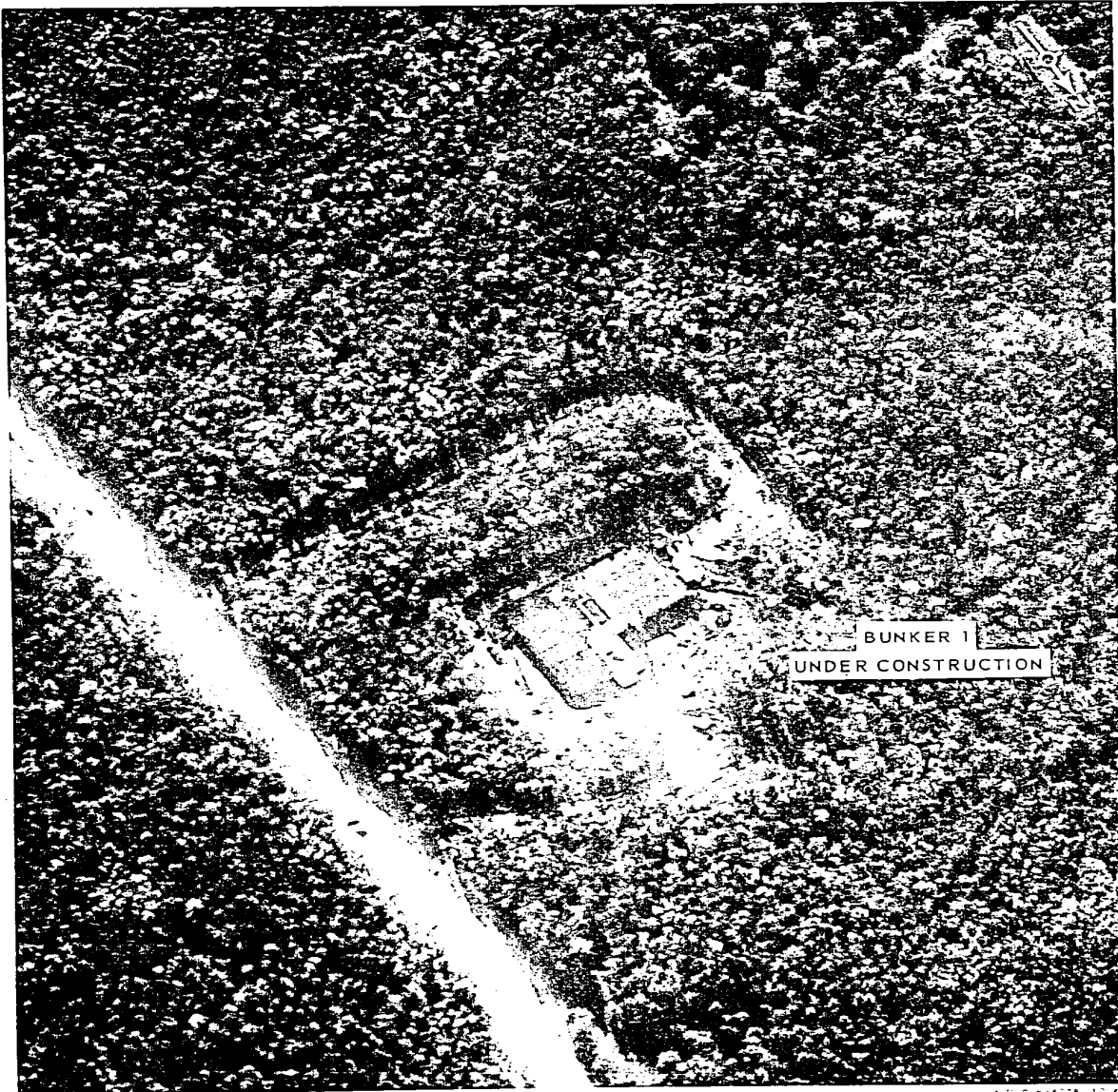


TOP SECRET CHESS RUFF
MISSION 4022, 1-4 OCTOBER 1965



ATTACHMENT 17

25X1
ZS81



SENSITIVE OPERATIONS COMPLEX, BELEV, USSR

TOP SECRET CHESS RUFF



25X1



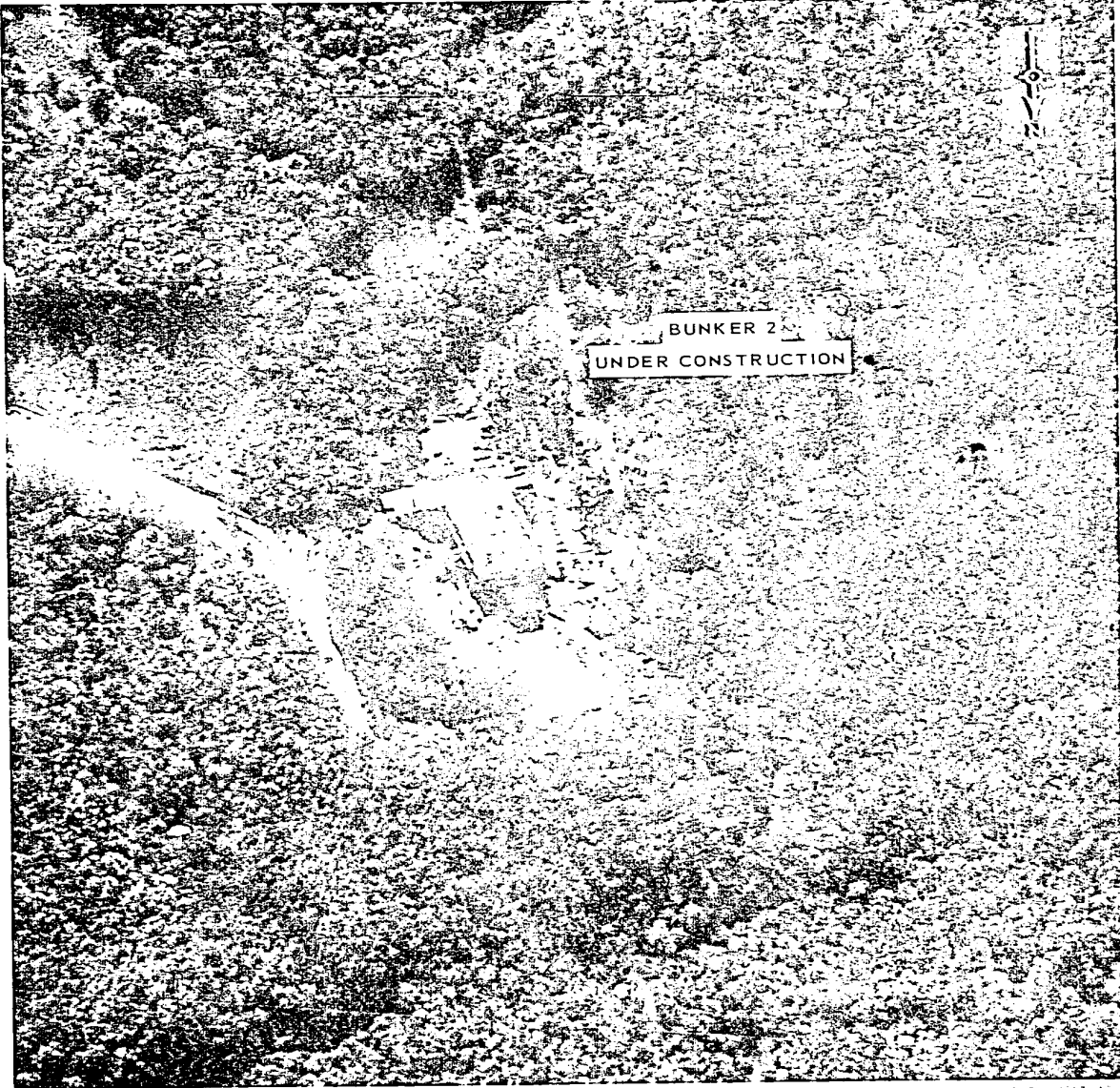
TOP SECRET CHESS RUFF

MISSION 4022, 1-4 OCTOBER 1965



ATTACHMENT 18

25X1



SENSITIVE OPERATIONS COMPLEX, BELEV, USSR



TOP SECRET CHESS RUFF

25X1



TOP SECRET CHESS RUFF

MISSION 4022, 1-4 OCTOBER 1965



ATTACHMENT 19

25X1



SENSITIVE OPERATIONS COMPLEX, BELEV, USSR

TOP SECRET CHESS RUFF



25X1

TOP SECRET

S-	1970
int/	date
INDEXED	13 Oct 65
SPR	11/4
CLASSIFIED	
RELEASED	

SPR 11/4

SPR 11/4

TOP SECRET

TOP SECRET

S-	1970
int/	date
INDEXED	6 Oct 65 SPP 11/4
SPP	11/4
CLASSIFIED	
RELEASED	

TOP SECRET

TOP SECRET

S-	15770
int/	date
SECRET	13 Oct 65 GPP 11/4
GPP	11/4
SECRET	
RELEASED	

TOP SECRET

TOP SECRET

S-	1970
int/	date
<i>6</i>	<i>12 Oct 65</i>
<i>SPP</i>	<i>1114</i>
CLASSIFIED	
RELEASED	

TOP SECRET