

ILLEGIB

Approved For Release 2000/09/08 : CIA-RDP78T05439A000500220034-9

Approved For Release 2000/09/08 : CIA-RDP78T05439A000500220034-9

5 18599

ORS

~~TOP SECRET~~



25X1C

PIIR

PHOTOGRAPHIC INTERPRETATION REPORT



Declass Review by NIMA/DOD

ARCH-ROOFED STORAGE BUILDINGS AT THE OSIPOVICH I AMMUNITION DEPOT YASEN NORTHWEST

OSIPOVICH I, USSR

TCS-80864/65

JULY 1965

COPY 4

5 PAGES

handle via **TALENT-KEYHOLE** control only

GROUP 1 EXCLUDED FROM AUTOMATIC DOWNGRADING AND DECLASSIFICATION

25X1C

~~TOP SECRET~~



Handle Via
TALENT-KEYHOLE
Control System Only

25X1C

TCS-80864/65

**ARCH-ROOFED STORAGE BUILDINGS AT THE
OSIPOVICH AMMUNITION DEPOT YASEN NORTHWEST
OSIPOVICH, USSR**

Four arch-roofed storage buildings similar to those observed in Cuba and at storage sites in the USSR, including those near Ulan-Ude and Arys, 1/ have been added to the Osipovichi Ammunition Depot Yasen Northwest, USSR, since [redacted]. The depot [redacted] is located at 53-19N 28-49E, 6 nautical miles east of Osipovichi, USSR (Figure 1).

were described in detail in a previous report. 2/ The trapezoid-shaped doubly secured storage area measures approximately 3,700 by 1,930 feet and contains 11 large storage buildings measuring 170 by 50 feet and at least 4 smaller buildings. The buildings in this area are not revetted; however, blast protection is provided by heavy vegetation and separations of more than 500 feet between structures.

The irregular-shaped singly secured storage area measures approximately 3,200 by 2,600 feet and adjoins the northeast side of the doubly secured area. The singly secured area contains

GENERAL DESCRIPTION OF DEPOT

The ammunition depot consists of a doubly secured storage area, a singly secured storage area, and an administration and housing area (Figures 2 and 3). The depot and its facilities

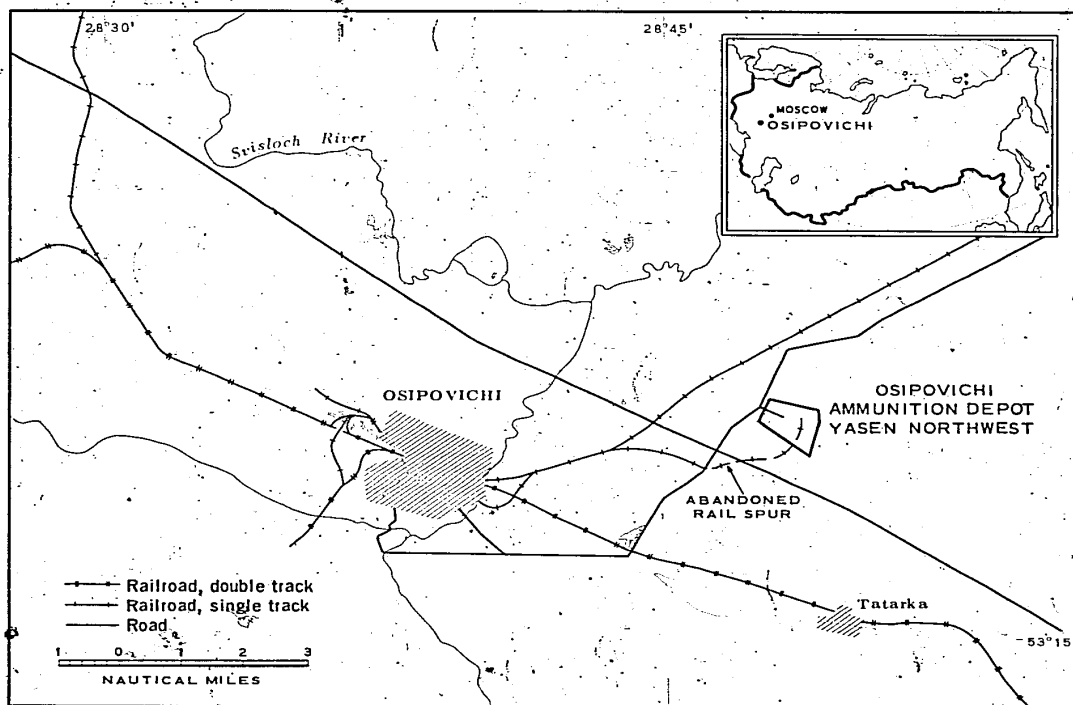


FIGURE 1. LOCATION MAP.

NPIC K-2841 (7/65)

Handle Via
TALENT-KEYHOLE
Control System Only

25X1C

25X1D

25X1A

TOP SECRET CHESS RUFF

Handle Via
TALENT-KEYHOLE
Control System Only

25X1C

TCS-80864/65

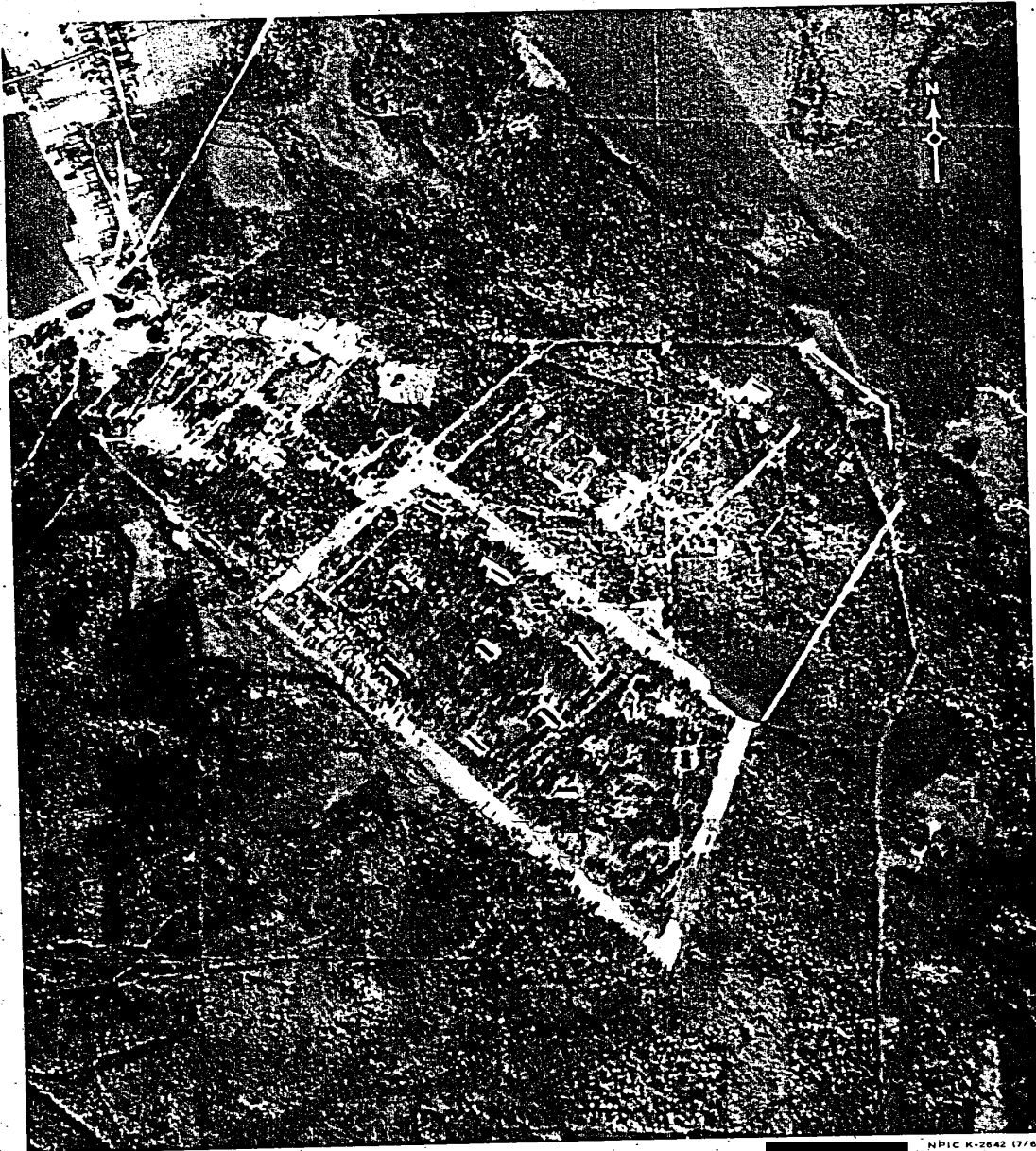


FIGURE 2. OSIPOVICH I AMMUNITION DEPOT YASEN NORTHWEST, USSR.

NPIC K-2642 (7/65)

- 2 -

25X1D

25X1C
TOP SECRET CHESS RUFF

Handle Via
TALENT-KEYHOLE
Control System Only

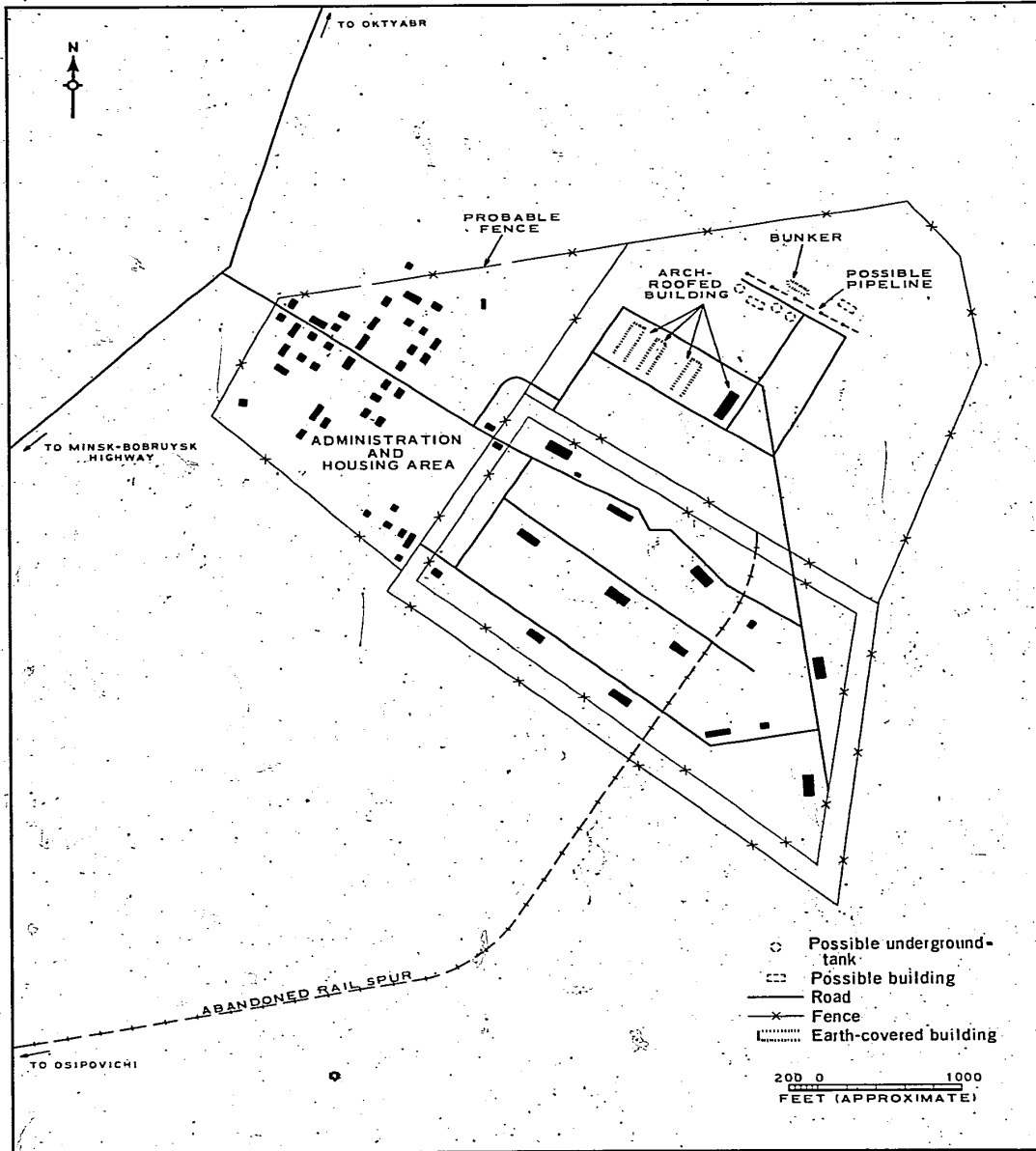


FIGURE 3. LAYOUT OF OSIPOVICH AMMUNITION DEPOT YASEN NORTHWEST.

25X1C

TOP SECRET CHESS RUFF

Handle Via
TALENT-KEYHOLE
Control System Only

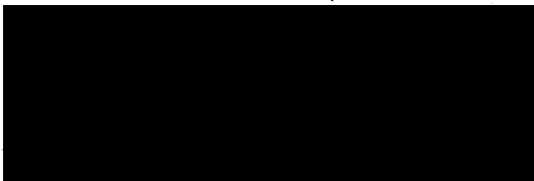
TCS-80864/65

the 4 arch-roofed buildings, 2 small possible buildings, 3 possible underground tanks, a bunker, and a possible overhead pipeline.

The administration and housing area is located northwest of the 2 secured storage areas and within the perimeter fence of the depot. Installations in the vicinity of the depot are listed in Table 1.

DESCRIPTION OF ARCH-ROOFED STORAGE BUILDINGS

Of the 4 arch-roofed storage buildings, 3 are earth covered and measure 245 by 60 feet.



25X1B

apart. The separations between the arch-roofed buildings vary, with the smallest measuring less than 100 feet; however, all of these structures are more than 800 feet from the nearest other

building. A chronology of the construction of the arch-roofed buildings is presented in Table 2.

Table 2. Chronology of Construction of Arch-Roofed Buildings at Osipovich Ammunition Depot Yasen Northwest, USSR

Date	Construction Status
	Conventional ammunition storage area apparently complete; no roads or arch-roofed bldgs visible in adjacent area
	One arch-roofed bldg erected; area cleared for a second bldg
	No change discernible on poor-quality photography
	Second arch-roofed bldg apparently complete
	Area cleared for a third bldg; road system visible
	Quality of photography precludes determination of status of third arch-roofed bldg
	Third arch-roofed bldg erected but not earth covered
	Third bldg earth covered
	Fourth arch-roofed bldg under construction
	Fourth bldg apparently complete but not earth covered

25X1D

Table 1. Installations in the Vicinity of Osipovich Ammunition Depot Yasen Northwest, USSR

Installation	Distance from Depot (approx nm)	Direction from Depot	Installation	Distance from Depot (approx nm)	Direction from Depot
Osipovich Barracks Area North	5.0	W	Bobruysk Airfield Ammunition Depot	21.0	SE
Osipovich Army Barracks South	5.0	SW	Bobruysk Ammunition Storage Area	22.0	SE
Osipovich Army Barracks Southwest	6.0	SW	Bobruysk Army Maneuver Area	24.0	SE
Osipovich Army Barracks and Training Area Northwest	11.0	W	Marina Gorka Army Barracks and Depot	26.0	NW
Osipovich Army Barracks Lapichi	13.0	NNW	Starye Dorogi Army Barracks	27.0	SW
Osipovich Army Barracks Tsel	13.0	NW	Urechye MRBM Launch Site	31.0	SW
Bobruysk Army Barracks West	14.5	SE	Urechye Army Barracks Verkhutina	34.0	SW
Bobruysk Ammunition Depot Northwest	15.0	SE	Shotsk SSM Fixed Field Position	36.0	NW
Bobruysk Air Force Depot North	16.5	SE	Marina Gorka MRBM Complex	36.5	NW
Bobruysk SAM Site A27-2	16.5	SE	Urechye Army Training Area	39.0	SW
Bobruysk Army Supply Depot Northwest	17.0	SE	Talista River	39.5	SW
Bobruysk Barracks and Headquarters 22nd Mechanized Division	19.0	SE	Urechye SAM Site A13-2	39.5	SW
Bobruysk Airfield	19.5	SE	Urechye Army Barracks Southeast	40.0	SW
Bobruysk Air Force Depot	20.0	SE	Gresk MRBM Complex	40.0	W

25X2

- 4 -

Handle Via
TALENT-KEYHOLE
Control System Only

25X1C

TOP SECRET CHESS RUFF

TOP SECRET CHESS RUFF
[REDACTED]

Handle Via
TALENT-KEYHOLE
Control System Only

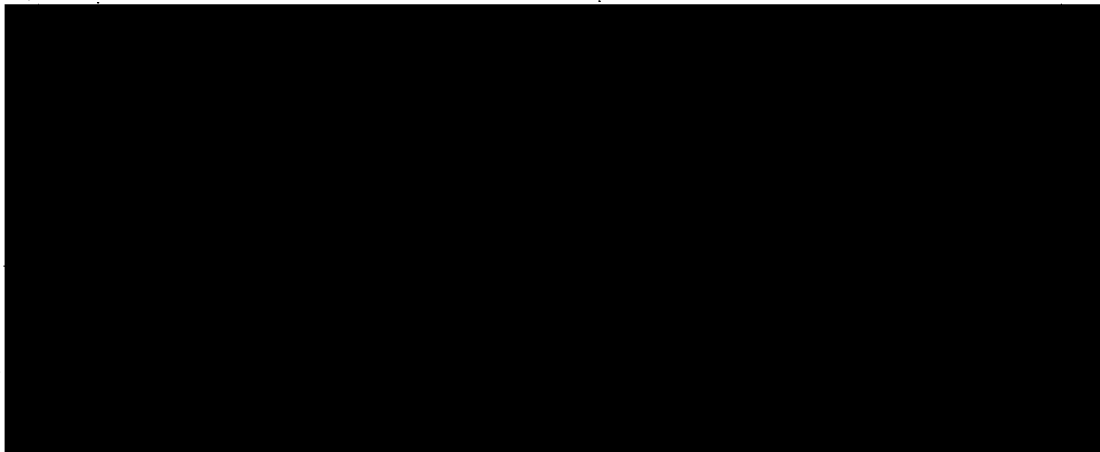
25X1C

TCS-80864/65

REFERENCES

PHOTOGRAPHY

25X1D



MAPS OR CHARTS

SAC. US Air Target Chart, Series 200, Sheet 0168-20HL, 2d ed, Oct 62, scale 1:200,000 (SECRET).

DOCUMENTS

25X9



25X9

NPIC. R-5055/64, *Arched-Roofed Storage Buildings at Ulan-Ude Ammunition Depot Taltsy, USSR*, Dec 64 (TOP SECRET RUFF)



2. NPIC. R-424/64, *Osipovich Ammunition Depot Ydsen Northwest, Osipovich, USSR, Belorussian MD*, Jun 64 (TOP SECRET CHESS RUFF)

REQUIREMENT

25X9



NPIC PROJECT

12033/64 (partial answer)

Handle Via
TALENT-KEYHOLE
Control System Only

25X1C

TOP SECRET CHESS RUFF
[REDACTED]